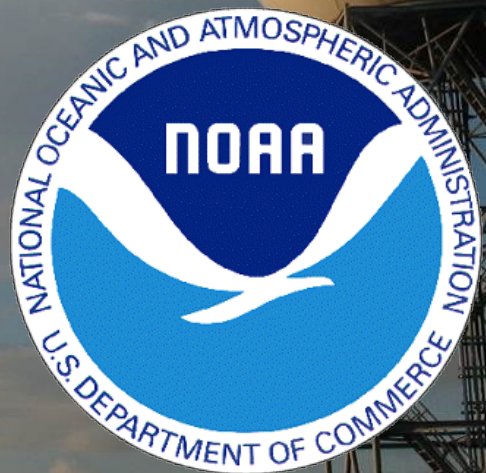


RIO GRANDE VALLEY, TEXAS HAZARDOUS WEATHER AWARENESS GUIDE 2024

A Guide to help you prepare



Brownsville/Rio Grande Valley





Rio Grande Valley, Texas

Hazardous Weather Awareness 2024



HAZARDOUS WEATHER AWARENESS IN THE RIO GRANDE VALLEY

The Texas Division of Emergency Management reminds Texans of the threat to life that thunderstorms and tornadoes pose, and stresses that no part of Texas is immune to them. Local officials are urged to work with schools, libraries, the media and civic groups to disseminate awareness information and help prepare Texans for the coming spring and summer hazardous weather season.

Spring marks the time of year when severe thunderstorms and tornadoes occur most often in Texas. They bring all the devastating elements - tornadoes, lightning, large hail, damaging winds and flash flooding. In addition to these more well understood hazards, rip and longshore currents become an increasing threat at the beach as more people take advantage of longer, hotter days to dip into the cool but sometimes dangerous surf. Finally, prolonged dry and warm/hot weather can lead to drought and help the spread of any wildfires that start, especially when low humidity and wind get involved.

During spring, Texans begin to take advantage of the state’s great outdoor opportunities. It is particularly important that everyone be aware of the weather when outdoors. Each Texan must know what to do when hazardous weather threatens at home, at work, at school, at play or even when traveling. Spring, defined as the months of March through May, is an excellent time to review safety plans for the coming weather threats.

INDEX	
	Page
Tornado Drill	3
Wildfires.....	4
Excessive Heat.....	5
Rip and Longshore Currents.....	6
Floods and Flash Floods.....	7-9
Severe Thunderstorms.....	10-14
Lightning.....	15
Tornadoes.....	16-19
The ABC’s of Windstorm Protection.....	20
Air Quality.....	21
Skywarn®	22
Storm Reporting.....	23-25
NOAA Weather Radio.....	26
Wireless Emergency Alerts.....	27-28
Contacts.....	29

This booklet is designed to serve as a guide to non-tropical, non-winter weather hazards that occur in spring or any time of year and teach everyone about impacts on the Rio Grande Valley.

You are encouraged to reproduce this booklet locally for further distribution.



Rio Grande Valley Mock Tornado Drill



(NWS Houston/Galveston)

As part of the spring hazardous weather preparedness season, your local National Weather Service in Brownsville conducts a Mock Tornado Drill so you can exercise your plans in the event a tornado threatens your location. **The drill will be conducted on Wednesday, March 6.**

The purpose of the drill is to give citizens of the Rio Grande Valley a chance to determine if they can receive a warning, and what to do when a warning is received or a tornado is occurring. Every citizen is urged to participate by considering the protective actions that should be taken during a real tornado warning. Most students in the Rio Grande Valley are in school during weekdays. When the tornado warning for the drill is

issued, schools throughout the Rio Grande Valley are encouraged to participate by conducting a tornado drill and putting their severe weather emergency preparedness plan into effect. This will give school administrators and safety officers an opportunity to see how effective their preparedness plan actually is. If your school does not have a severe weather preparedness plan, contact your county's director of emergency management or the National Weather Service in Brownsville.

Here are the plans for the drill:

1. At approximately **11:00 am on drill day**, a **mock** Tornado Warning will be issued by the Brownsville/Rio Grande Valley NWS, in English and Spanish. The **mock** warning will be in effect for the four-county area, as well as southern Zapata, and will only be issued through broadcast on the NOAA All Hazards Weather Radio. We will use the code for the Routine Weekly Test (RWT) to issue this mock Tornado Warning. **We will not activate the Emergency Alert System (EAS).** The mock warning will be in effect for 15 minutes.
2. At approximately **11:15 am**, the all-clear may be sounded to end the Tornado Drill. This will signify the end of the drill. Schools that participate with a tornado drill should activate their emergency procedures when they receive the mock Tornado Warning. Once all of the preparedness actions have been taken and the students have been moved to your prearranged shelter locations, you can consider that the drill is over for your school.

Did you miss the drill? No problem! You can create your own drill and run at any time, similar to a fire drill. Just adjust your preparedness actions for a **tornado event**, and proceed from there. Need more details on what to do? Here are some [pointers](#) that can be used in schools or businesses to get you started.



Wildfire Danger

A Lone Star State meteorologist in 1927 once said: “Texas is a State of perpetual drought broken by the occasional devastating flood”. A short term drought in 2009 was replaced by a record wet water year (October to September) in 2010, which was replaced by a record dry water year in 2011 and the start of a three year drought that equaled records set in the 1950s. In 2011, the dry and hot weather that followed the record water year helped aid wildfire spread to more than 50 thousand acres across Deep South Texas ranch and brush country. Another drought, similar to 2011, intensified to begin 2021, just months after 8 to 18 inches of rain fell with Hurricane Hanna in July 2020. In March, nearly 20 thousand acres burned on Brooks and Kenedy ranches. In 2022, more than 40,000 acres burned mainly across the Brush Country and rural Valley locations. Another 10,000+ acres burned in late summer 2023, during the heart of a record hot, and dry, summer. Spring 2024 may offer a similar threat across the Rio Grande Plains/Brush Country/Brooks-Kenedy ranches, possibly extending to parts of the Rio Grande Valley.

Regardless if a long term drought redevelops in 2024, the alternating cycle of short-term flooding rains followed by longer-term dry spells is a recipe for the rapid spread of wildfire. When rain falls, grass and brush grows and thickens in the warm, humid tropical environment of the Rio Grande Valley. When the inevitable dry weather or drought follows, the grass and brush dry out rapidly, becoming the “fuels” necessary to quickly spread wildfire across open rangeland and farmland, sometimes threatening buildings and neighborhoods that encroach on the edge of the wildlands. These fuels are most likely to ignite from wayward sparks caused by trucks, tractors, or grinders operating in high grass and brush, or from cigarettes tossed from vehicle windows. In rare cases, very strong winds can topple rural power lines, which provide the spark. Once ignited, the combination of sufficiently dry fuels, very low humidity, and gusty winds can spread a fire rapidly, covering hundreds of acres in only a few hours. Recently, more than 1 million acres burned in the Panhandle during an “explosive” wildfire spread situation. Such fires are difficult to control and contain and require resources that go well beyond county lines and include hundreds of firefighters, dozens of engines and bulldozers, and even water-dropping aircraft.

The best way to stop a wildfire is to never start one! Smokey Bear says it best: “Only YOU can prevent wildfires”. When dry weather appears, be sure to clear yards and ranches of excessive dry, dead, or dying brush, cut or cattle graze the grass to low heights, and remove any items that could spark a fire. When the combination of weather and wind produce ripe conditions for rapid to explosive spread of wildfire, we suggest the following prevention techniques:

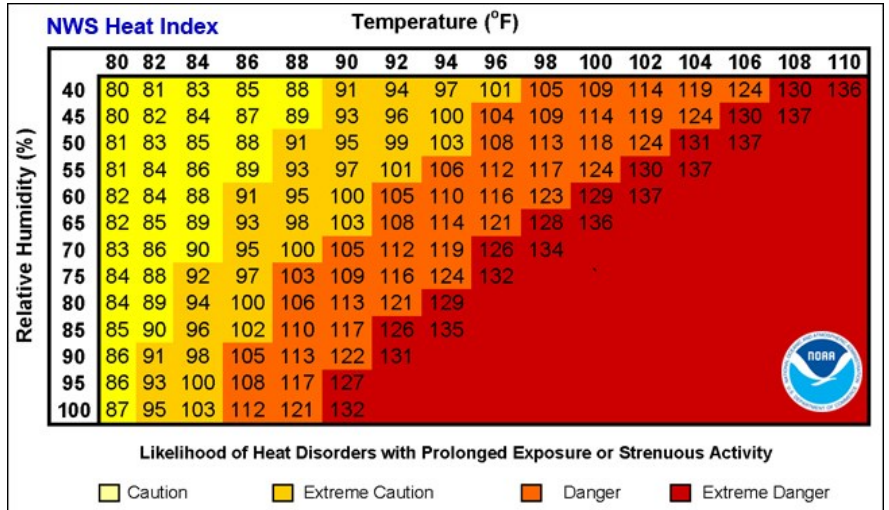
- Park vehicles on dirt or paved surfaces, and do not drive into the grass
- Use welding or grinding equipment on paved or dirt surfaces
- Same goes for outdoor barbeque grills or home fireworks
- Dispose of cigarette butts into vehicle ashtrays





Excessive Heat

Most summers since 2009, showed residents and visitors to the Rio Grande Valley that even in an area known for four months of hot, humid weather, with average daily temperatures above 80, potentially life threatening heat waves can occur. In 2016 and 2017, century-mark readings were common across inland portions of the Rio Grande Valley. For McAllen, there were 90 such days in 2016, and another 87 in 2017, most between May and October. In 2023, new heat records were set, there were nearly 100 days of 100 degrees in McAllen, and “feels like” temperatures exceeded 115 more than a dozen times. The heat did not go unnoticed, especially for outdoor workers and others in un-air conditioned facilities. Fortunately, local officials across the region took many of the correct precautions to ensure their employees’ safety and health.



The Valley doesn’t need to wait until summer to have issues with excessive heat. In fact, heat waves in **May** can be more troubling, since residents and visitors may not have yet acclimated to conditions more common in mid summer than late spring. In 1998, the last time El Niño was similarly strong as it is in early 2024, the heat index, or “feels like” temperatures, exceeded 110°F on May 7th. May 22nd and 23rd 2008 brought local heat index values above 115°F, among the highest for that time of year.

What is a Heat Advisory?

A heat advisory is issued when the “feels like” temperature, also known as the “heat index” reaches 111°F, for at least two hours. Heat advisories are used by decision makers to begin special safety procedures for residents, visitors, workers, and others who may be exposed to the sweltering conditions for any length of time. The term advisory, as used here, means that without precautions, heat stroke is likely, and death is possible.

What is a Heat Warning?

A heat warning is issued when the apparent temperature reaches 116°F for at least two hours. Heat warning conditions are very rare in the Rio Grande Valley. The term warning, as used here, means that **heat stroke and death are likely** for persons exposed to the conditions for even short periods of time. The usual precautions for heat relief may not be sufficient to prevent human and animal health deterioration.

What You Can Do

- **Slow Down.** Schedule strenuous activities early in the morning, if at all.
- **Drink Plenty of Water.** For healthy persons, be sure to drink water at all times, even if you are not thirsty. Persons on fluid restricting diets should consult their physicians before increasing consumption.
- **Dress for Summer.** Lightweight, light colored clothing reflects heat and sunlight and helps maintain a lower body temperature.
- **Do not Drink Alcohol.** Alcoholic beverages increase dehydration rate and could bring on heat stress or heat stroke rapidly.
- **Spend time in Air Conditioning.** Cooler locations offer relief and some protection from heat dangers.
- **Avoid Sunburns.** Sunburn makes heat dissipation from the body more difficult. As the summer solstice approaches, the angle of the sun reaches its peak, increasing the threat for sunburn in a short period of time.
- **Eat Lighter.** Put less fuel on your inner fires. Foods that increase metabolic heat production can also increase the rate of water loss.
- **Never Leave Children Unattended in Vehicles.** Not even for a minute! Temperatures rise rapidly inside a car, nearly 30°F in as little as 20 minutes. Click [here](#) for more information on children and hyperthermia.



Rip and Longshore Currents



Beaches along the Lower Texas Gulf coast are not immune to rip currents. Since June 2008, twenty people have drowned at the beaches of South Padre Island and Boca Chica, mostly during the months of May, June, and July. This includes three unfortunate deaths occurring during the Memorial Day weekend of 2014. Sunny skies, warm air and water temperatures, and light to moderate surface winds can mask rip currents, which can occur under persistent easterly swell produced by broad high pressure ridges centered north of the border region, or by distant tropical, subtropical, or non tropical disturbances in the Gulf or Caribbean. When these conditions combine with seasonally high beach populations, such as United States Holidays including Memorial Day, the Fourth of July, and Labor Day, and other favored periods such as Spring Break, Semana Santa (Holy Week, including Good Friday and Easter Sunday) and the last two weeks in July (Mexico summer break), the potential for rip/longshore current danger increases. This is most critical for poor swimmers who venture a bit too far into the surf.

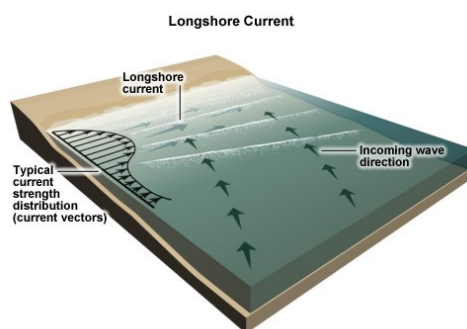
Rip/Longshore current injuries and deaths are avoidable! Learning to swim, and knowing the threat for currents before you hit the surf, and understanding how to calmly escape the "grip of the rip" will ensure a safe and fun beach experience.

Rip Currents

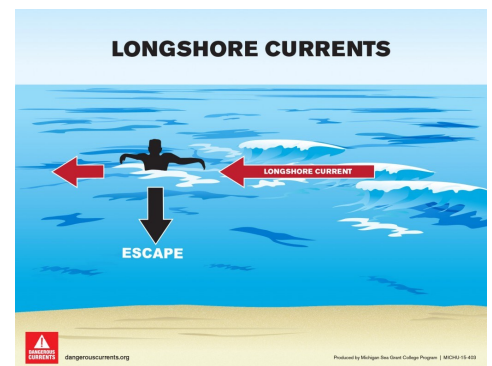
A rip current is a narrow channel or river of water moving away from the shore at a fast speed. Speeds may range from 1 to 2 mph to 6 mph. Rip currents usually extend from near the shoreline, through the surf zone, and beyond the line of breaking waves. Rip currents are comprised of three parts: The feeder source, the neck, and the head (above). The feeder source is the area where wave energy is focused and is the point of origin for the rip current. The neck is the most dangerous part of the rip current, where water is flowing quickly away from the beach. The head is where effects of the rip current begin to disperse or spread out as the seaward pull dissipates. A rip current is not the same thing as an undertow. Rip currents carry you rapidly away from shore but do not pull you under the water.

Longshore Currents

Longshore currents are another form of hazardous water conditions that is common from late autumn through late spring along the Lower Texas coast. When waves break on the shoreline, they create currents parallel to the shoreline. Longshore currents occur most often when waves approach the shoreline at an angle. The angle of the incoming wave causes a progressively breaking wave that moves along the shoreline and a longshore current that moves in the same direction as the breaking wave. The longshore current spans the entire width of the surf zone. It reaches maximum strength in the middle of the surf zone and diminishes in strength as it moves farther offshore.



©The COMET Program





Floods and Flash Floods

What are the different types of floods?

Flash Floods Flash floods are short-fuse weather events, typically lasting on the order of 6 hours or less. Usually, flash floods occur within a few minutes or hours following heavy rainfall. They can also be caused by a man-made event, such as a dam or levee failure. Flash floods cause most of the fatalities associated with flooding events. A flash flood is defined as follows in the Rio Grande Valley:

- ≥ 3 feet of standing water;
- High water entering multiple structures sufficient to cause structural damage;
- ≥ 6 inches of fast flowing water across roads;
- Arroyos/streams overtopping banks sufficient to produce ≥ 6 inches of fast flowing water.

Urban/Arroyo/Ranch Floods Nuisance flooding in highly populated areas of the Rio Grande Valley is common whenever torrential rains fall in a short period of time. Cities generally have 2 to 6 times the runoff potential as pastures, ranchland, and wetlands. Clogged drainage ditches or canals increase the potential for urban flooding, even for rainfall less than an inch. An urban flood is defined as follows in the Rio Grande Valley:

- < 3 feet of standing water, enough to cause minor road flooding; similar water depths on ranches or farms
- < 6 inches of fast flowing water across roads;
- Arroyos/streams nearing bank full, or briefly overtopping banks with < 6 inches of fast flowing water.

River Floods Heavy rainfall falling over a widespread area (such as a large portion of a watershed) over a prolonged period (up to several days) can cause river flooding. Typically, river flooding begins as a high crest on the upper part of a watershed that takes several days to move downstream. Due to the slow nature of river flooding, ample warning is provided to evacuate people or property in the path of the flooding.

How does flooding impact the Valley?



Flooding is a relatively common event for the Rio Grande Valley. Tropical systems, with or without a name, during the summer and early fall, can cause widespread flooding. Hurricane Dolly (2008) remains a benchmark event. Flash flooding can also be produced by strong slow moving thunderstorms especially during the spring and summer months. In August 2008, the city of Roma was inundated after a foot of rain fell in less than six hours. Hurricane Alex dropped more than 50 inches of rain across the Sierra Madre Oriental in northern Mexico; runoff into the Rio Grande basin resulted in water releases from Falcon Dam, flooding the unprotected Rio Grande from Starr to southwest Hidalgo County. Flash flooding was the story in 2015, with notable events in April, May, June, August, and October. Record event rainfall of more than 15 inches to perhaps up to 18 inches in Mercedes/Weslaco inundated neighborhoods with 4 to 5 feet of water during the [Great RGV Flood of June 2018](#). The [Great Flood, Sequel](#) flooded much of Raymondville (left), northwest Harlingen, and eastern Hidalgo County in June 2019.

A lesser but still notable event occurred [between July 6-9, 2021](#). Flooding is most critical in the Lower and Mid Valley, where rapidly growing population combines with naturally poor drainage from the river delta to increase the threat to people and property.



Things you can do ahead of time to prepare for major floods: Know the flood risk at your place of home or business and its elevation above flood stage. Store drinking water in clean bathtubs or containers. This is very important as flood waters will contaminate the drinking water supply in your area. Stock non-perishable food items requiring little cooking and no refrigeration. Keep first aid supplies on hand. Keep NOAA Weather Radio, battery-powered portable radio, emergency cooking equipment, and flashlights in working order. Install check valves in sewer traps to prevent flood waters from backing into your home.

Flood disaster supply kit:

first aid kit	canned food/can opener	bottled water
rubber boots	NOAA Weather Radio	battery-powered radio
flashlight	batteries	gloves

What do you do after the flood has passed?

Boil drinking water before using. Do not use tap water without boiling it!

Seek necessary medical care at the nearest hospital.

Clothing, food, and shelter are available at the nearest Red Cross.

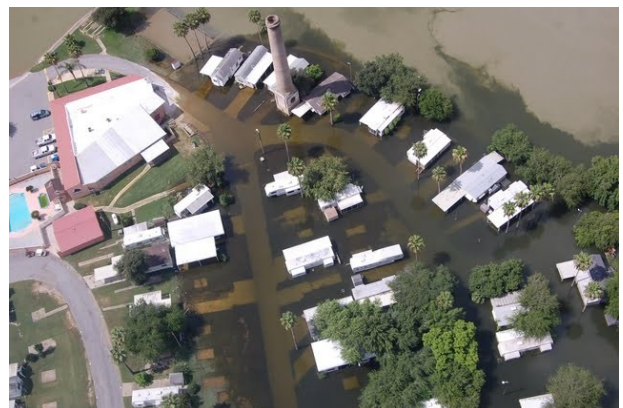
Do not visit disaster areas. You may hamper rescue and emergency operations.

Electrical equipment should be checked or dried before being returned to service. Make sure to wear rubber gloves and rubber boots when working with electrical equipment.

Report broken utility lines to the proper authorities



Along the Rio Grande, SW Hidalgo County 2010
(Credit: Hidalgo Co. Emergency Mgmt.)



Chimney Park community, Mission, Texas,
July 2010. (Credit: Hidalgo Co. Emergency
Mgmt.)



National Weather Service Flood Information:

Flood Watch Means that conditions in the watch area will be favorable for flooding during the specified period. Usually heavy rainfall is expected following a long period of wet weather.

Flash Flood Warning Flash flooding is reported or is imminent in the areas specified in the warning. Take immediate precautions.

Flash Flood Emergency When Flash flooding is resulting in life-saving water rescues, or about to do so. Issued only for the more dire of circumstances.

Flood Warning Flooding is continuing in the areas specified in the warning, well after rainfall has ended and fair weather has returned. Avoid being lulled into a false sense of safety.

Flood (River) Warning River or stream gages have exceeded flood stage. Flooding can range from inconveniences near the river (minor) to significant life and property threats (major).

Flash Flood/Flood Statement Follow-up information on a Flash Flood/Flood Watch or Warning.

Flood Advisory For Nuisance flooding of city streets, low-lying areas, underpasses and storm drains, arroyos (washes), or standing water in farms, ranches, or unpaved roads. Drive with care and avoid danger.



What do you do in flash flood situations?

The worst place to be in a flash flood is traveling by car. **Two Feet** of water will carry away most automobiles, including SUVs and pickup trucks. Do not cross water flowing over a roadway if you do not know its depth.

What do you do when a **Flood or Flash Flood Warning** is issued or flooding is imminent?

If advised to evacuate, do so immediately!!

Move to a safe area...not cut off by flood waters.

Avoid areas you know are subject to flooding.

Do NOT attempt to drive over a flooded roadway.

Do not drive into barricaded areas; **the barricades are there for a reason!**

Children should never play around storm drains, creeks, streams, or rivers, or in flooded streets.





Severe Thunderstorms

What classifies a “severe” thunderstorm? A thunderstorm is classified as “severe” by the National Weather Service when it produces wind gusts in excess of 58 mph or hail of 1 inch in diameter or larger. An occurrence of a tornado will also classify a thunderstorm as severe.



How do severe thunderstorms impact the Rio Grande Valley?

Severe thunderstorms are rare in the Rio Grande Valley. On average, fewer than 30 days a year have thunderstorms; severe thunderstorms occur on less than a third of these days. Severe storms are most common between late February and mid June, with late October and November a secondary period for activity. Severe storms can occur just about any time of day in the Rio Grande Valley, but are most common in the afternoon and evening hours. Since 2012, damaging wind and hail storms have cost more than \$1 billion in insured property damage. The rare nature of severe thunderstorms in the Rio

Grande Valley increases the importance for residents and visitors to be ready due to the potential costs.

Severe weather threats:

Downbursts

A downburst is a small area of rapidly descending air beneath a thunderstorm. Downburst winds are often referred to as “straight-line” winds. Severe downbursts produce wind gusts from 60 mph to more than 100 mph. The damage is often similar to damage from a weak tornado. Downburst damage is far more common in the Rio Grande Valley than tornado damage.

Large Hail

Hail is formed as strong rising currents of air within a storm (updrafts) carry water droplets to a height where freezing occurs. The ice particles travel upward and downward through the storm several times, growing in size. Once they become too heavy to be supported by the storm’s updraft, they fall to the ground as hail. Hail of 1 inch in diameter or larger classifies “large” hail. However, smaller hail lasting for more than ten minutes, or driven by strong wind, can also cause significant damage. Hail sizes are usually given as references to everyday objects to make it easier to estimate hail size.

Tornadoes

Tornadoes are another threat from severe thunderstorms. Please see the Tornado section for more information.

Cloud-to-Ground Lightning

Severe thunderstorms can produce extremely dangerous lightning. Please see the Lightning section for more information.

Flash Flooding

Heavy rains from severe thunderstorms can produce flash flooding. Please see the Floods/Flash Floods section for more information.



2012: “Hail” of a Year in the RGV



Photo Credit: KRGV-TV-5



Hail occurs in some Valley locations each year. However, few in the mid Valley will forget the fury of repeated hailstorms during the spring of 2012. During the [evening of March 29th](#), hail the size of golf balls to baseballs was blown by tropical storm to hurricane force wind gusts into manmade and natural infrastructure. Thousands of buildings and vehicles were heavily damaged, and hundreds of trees were completely stripped of their spring growth. Unfortunately, thousands of grackles (birds) on wires were unable to seek safety and were killed. The storm caused an [estimated \\$600 million](#) in insured property damage, which ranked 11th costliest for all Texas hazardous weather events dating back to 1950 . Three weeks later, another round of [unusually large hailstones](#), up to softball size, pelted the same locations. During the week of May 8th through 12th, hail and damaging wind occurred at varying locations across the Rio Grande Valley.

A hot, dry summer was punctuated by another blast of severe weather, including hail up to the size of golf balls on October 18th, particularly in Hidalgo County, and to close out the year, *more* hail fell in Cameron County with a cold front around midnight on December 5th. The dominance of hail bore out in the yearly storm report summary; 58% of all severe weather and tornado events were hail.

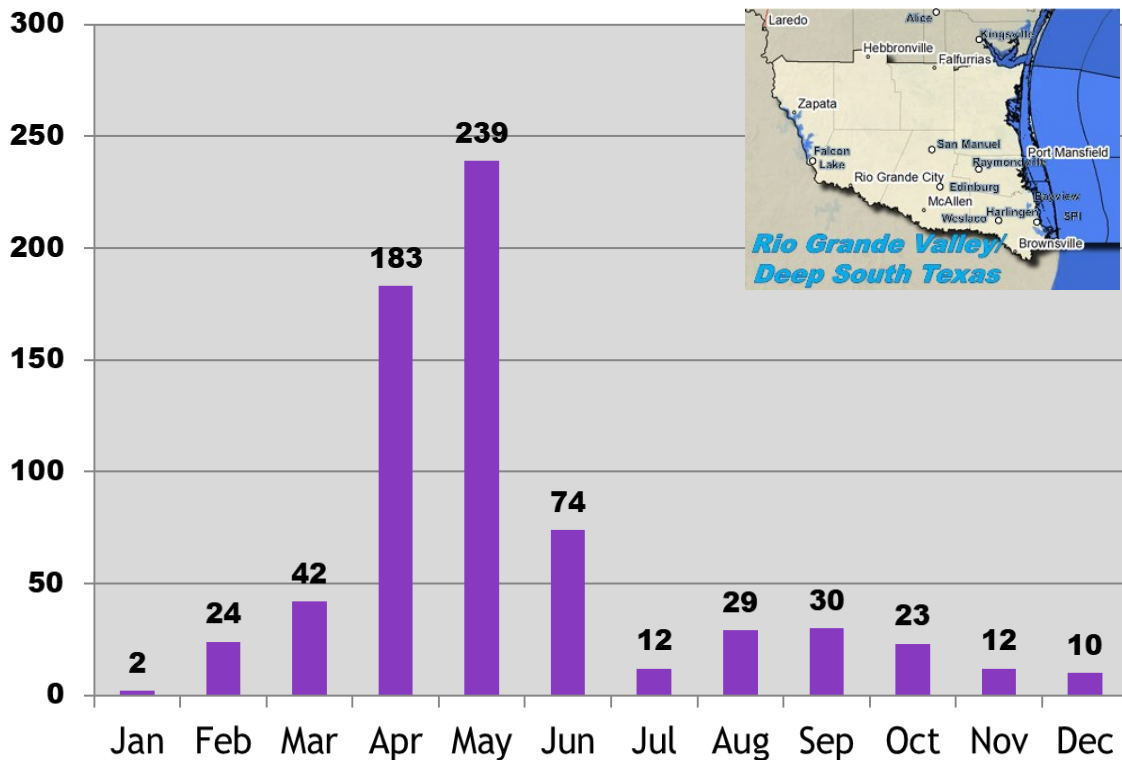
Examples of Hail Size	
penny sized	0.75 inch
nickel sized	0.88 inch
quarter sized (classifies storm as severe)	1.00 inch
golf ball sized	1.75 inch
baseball sized	2.75 inch
softball sized	4.75 inch





When Does Severe Weather Typically Occur in the Rio Grande Valley?

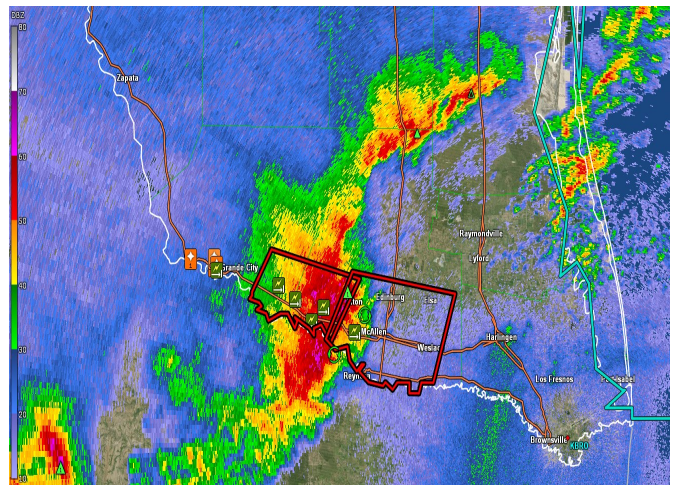
(Data from 1996-2023)
680 Hail and Wind Events / Average 24 Per Year



Severe weather can occur any time of the year in the Rio Grande Valley. Peak activity is in May, with April second and June third highest, respectively. A secondary slight bump appears from August to October, likely a combination of increasing atmospheric instability and tropical cyclone wind impacts. More than 70 individual events on April 21, 23, 28, and 29, 2023, pushed April's total a bit closer to May's.



Demolished makeshift home in a *colonia* near Penitas, TX, April 29, 2023



Radar image of bow-shaped storm cell just after the damage (left) occurred



National Weather Service Severe Thunderstorm Information:

Graphiccasts and “Blogcasts” Issued by the National Weather Service office in Brownsville, and displayed prominently on the front of the website (below, left). On potential severe weather days, these provide a picture of the potential development areas. Worded descriptions are provided in plain language by clicking on “show descriptions” at the bottom left of the image. Updated as needed, and as time allows, prior to and during severe weather event. *Note: new blue banners at the top and bottom of graphics are now standard. Go to <https://weather.gov/rgv> to view.

Severe Thunderstorm Watch Issued by the Storm Prediction Center in Norman, OK. Usually covers a large area (such as all or a portion of south Texas) and lasts for 6 to 8 hours. A **Severe Thunderstorm Watch** means that conditions are favorable for severe thunderstorms that may produce large hail, damaging wind, dangerous lightning, or possibly tornadoes.

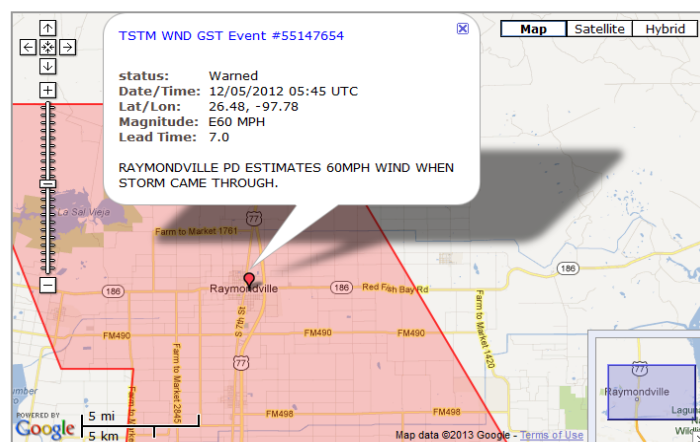
Severe Thunderstorm Warning Issued by the National Weather Service office in Brownsville. Usually covers a small area and has a short duration of 30 to 45 minutes; longer for “squall lines”. A **Severe Thunderstorm Warning** means that a severe thunderstorm has been detected by radar, or reports of severe weather have been received by the National Weather Service in the area covered by the warning. The warnings are broadcast over NOAA Weather Radio and are usually scrolled on local television stations. The warnings are also relayed to local emergency management and public safety officials who can activate emergency procedures to help protect the public. If a warning is issued for your area, take action immediately!

Severe Weather Statement Follow-up information on a **Severe Thunderstorm Warning**. Keeps users informed on where the storm is moving and has moved, and provides any reports of significant wind, hail, or damage.



Storm Prediction Center Convective Outlook, May 12, 2021

Preliminary Warning And Event Mapping (BETA)



Damaging wind report overlaid on warning polygon during late evening of Dec. 4, 2012.



Hail and Windstorm Preparedness

Before the Storm:

Learn the county that you live in and the names of nearby cities. Severe Thunderstorm Warnings are issued using a polygon based on storm location and track. The message includes the county and names of cities along or near the track.

Check our [web page](#) or our social media sites ([Facebook](#), [Twitter/X](#), and [YouTube](#)). Details of the potential for dangerous weather will be provided when conditions warrant, with updates through the day and night as conditions evolve. Hazards, timing, potential impacts, and the potential for occurrence (threat via probability) will be provided.

Make sure you are aware of the best spot in your home or workplace to take shelter from severe weather.

Not safe at home? Find alternatives. Have a designated location to travel to in 15 minutes or less if you deem your home to be unsafe from strong wind or large hail. [Make a plan](#) well ahead of time to be in a safe location before warnings are issued.

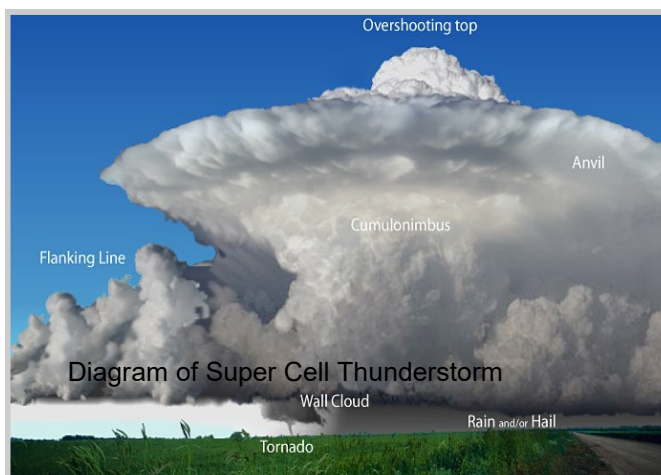
Have a NOAA Weather Radio in your home and workplace. Most receivers are specially built to alarm any time a severe weather Watch or Warning is issued by the National Weather Service. Be sure to install fresh batteries. Using the instructions provided, program the radio to alert for the warnings you may need; by county or by area.

When you hear a warning:

The interior room on the lowest floor of a sturdy building, away from windows, is the safest place to be during dangerous winds, hail, or lightning! A closet or bathroom are best choices; you want to place as many walls between you and the wind or hail as possible.

On the road and can't reach safety in time? Follow these tips: If hail is expected, get to a carport, garage, or canopy covers at a gas station or car wash. Avoid underpasses which can become clogged with vehicles and increase the possibility of accidents; rainfall can flood these areas as well. If you encounter strong winds, pull over and park, and cover yourself and any passengers with blankets or pillows.

Outside on a Farm or Ranch and Unable to Get to Safety? Move away from metal equipment, then crouch down and cover your head with your hands. Avoid ditches or dips in case flooding develops.





Lightning



Near McAllen, June 2009

Lightning occurs with all thunderstorms. An average 93 deaths and 300 injuries occur around the U.S. annually. Lightning results from the buildup and discharge of electrical energy between positive and negative charged areas. Most lightning deaths or injuries occur when people are on a golf course, near water, or standing under trees for shelter. The late afternoon or early evening hours during the summer are the most common times for lightning casualties nationwide, but they can occur just about any time of year near the Gulf coast. The Gulf coast region, from near Houston to the Florida Suncoast, has the highest incidence of lightning strikes annually throughout the U.S. Lightning frequency decreases markedly farther south, with much lower annual incidence across the Rio Grande Valley. Such was not the case in 2015, when intense lightning storms struck the Valley often in April, May, June, and October, with

tens of thousands of power outages and millions in dollar damage. In 2019, a single strike destroyed a wind turbine at a cost of \$5 million. Lightning can strike several miles away from a thunderstorm. If you know a thunderstorm is nearby or approaching, take shelter in a building and stay away from trees, metal objects and water. An automobile can be a relatively safe place when lightning occurs. Avoid using telephones and electrical appliances during a thunderstorm. Plan to be in or near a safe location during the time thunderstorms are forecast. Avoid being caught outside! Remember, When Thunder Roars...Go Indoors!

If you are caught outside during a thunderstorm...

...and you feel your hair stand on end, lightning is about the strike! Squat low to the ground on the balls of your feet. Place your hands on your knees with your head between them. Make yourself the smallest target and minimize contact with the ground. Stay away from trees and other tall objects. If you are in the woods, find the shortest trees to seek shelter underneath. If you can hear thunder, then lightning may strike in or near your location. Rules of thumb, including the "30/30" rule, may not apply to all situation. Bottom line? When Thunder Roars, Go Indoors; if you see a flash, "dash" inside.



(NOAA)



Tornadoes



Tornado in Hebbronville, July 1 2010

What causes tornadoes?

Tornadoes most commonly form from large-scale storm systems that traverse the U.S. from west to east. Typically, severe thunderstorms will develop in the warm, moist airmass ahead of the storm system, and can produce tornadoes. Tornadoes can result from isolated thunderstorms or as part of a large squall line that forms along a cold front. Severe thunderstorms and tornadoes need an unstable (warm, humid) airmass, cold air at mid-levels of the atmosphere, and strong wind shear (turning and strengthening of winds with height in the atmosphere) to develop. In a thunderstorm, the tornado begins as a circulation several thousand feet above the ground, and slowly descends to the ground. Organized tropical systems like tropical storms and hurricanes can also produce tornadoes, but usually smaller and shorter-lived than those spawned by mid-latitude systems. In 2023, a tornado with winds of 85 to 105 mph [ripped through Laguna Heights](#), killing one, injuring eleven, and leaving over \$1 million in damage.

How do tornadoes impact the Rio Grande Valley?

Texas averages 137 tornadoes each year, the highest number of any state in the U.S. Tornadoes are most common during the spring and summer months nationwide, but due to our proximity to the Gulf of Mexico as a moisture source, tornadoes can occur across the Rio Grande Valley any time of year. However, the Valley's location below 27°N latitude reduces the opportunity for significant tornado events. Large scale forcing provided by mid latitude storm systems is very rare. There have only been three tornadoes with ≥ 113 mph winds in the Valley since 1980. The Laguna Heights tornado (above) of May 13, 2023, had winds just below these speeds.

What is a waterspout?

Waterspouts are weak tornadoes that form over water. Typically, they develop when light winds from different directions converge, spinning and lifting very warm and humid air along the surface of the Gulf or Laguna Madre into rotating mini cloud towers. Along the Texas coast they are most common during the morning hours of the summer months, and do not require a thunderstorm to be present to form. Usually, waterspouts are short-lived, do little if any damage, and can have winds near or below gale force. Tornadoes over water are different altogether; these are persistent, rotating supercell storms that can produce winds in excess of 100 mph and cause significant damage to boats and ships. On rare occasions, waterspouts can move inland as tornadoes and cause damage. A weak waterspout moved onshore from Laguna Madre Bay in November, 2009, causing minor damage to a boat sales shop. A weak waterspout blew down beach tents on South Padre in 2019.



Above: Demolished substandard buildings in Laguna Heights, May 13, 2023



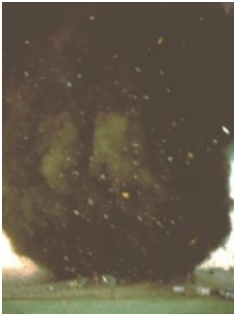
Rating Tornadoes



Weak tornadoes are generally those classified as EF0 or EF1 and comprise 88% of all tornadoes nationally. In the Rio Grande Valley, these tornadoes typically last only a few minutes and produce winds less than 100 mph. Usually, they will cause only spotty minor damage, such as downing trees or power lines. Tornadoes in the EF0 or EF1 category contribute to less than 5% of tornado deaths annually. The Laguna Heights tornado (2023) was one of them, with one death.



Strong tornadoes are those classified as EF2 or EF3, with winds of 110 to 205 mph. They comprise 11% of all tornadoes nationally and account for nearly 30% of all tornado deaths across the entire U.S.. They may last 20 minutes or longer. Tornadoes of this magnitude are uncommon in the Rio Grande Valley.



Violent tornadoes, those classified as EF4 or EF5, account for less than 1% of all tornadoes nationwide. These tornadoes account for at least 70% of all tornado deaths nationally, and their lifetime can exceed 1 hour. Violent tornadoes are extremely rare. Tornado rating has nothing to do with the size of the tornado. Each tornado is rated after it touches down, based on the damage that it has done. [In 2011](#), 550 persons died across the U.S., the 4th-highest number of fatalities on record. In 2013, two violent tornado events in the [Oklahoma City metropolitan area](#) killed more than two dozen persons. On December 26, 2015, a [tornado ravaged north Texas](#), killing eight.

Enhanced Fujita Scale for Tornado Damage

NUMBER	WIND SPEED (3 SEC GUST)	DAMAGE
EF-0	65 to 85 mph	Light
EF-1	86 to 110 mph	Moderate
EF-2	111 to 135 mph	Considerable
EF-3	136 to 165 mph	Severe
EF-4	166 to 200 mph	Devastating
EF-5	Over 200 mph	Incredible



National Weather Service **Tornado** Information

Tornado Watch Issued by the Storm Prediction Center in Norman, Oklahoma. Usually covers a fairly large area (such as all or a portion of south Texas) and runs from 6 to 8 hours. A Tornado Watch is usually issued a few hours in advance of severe weather, and means conditions are favorable for severe thunderstorm development.

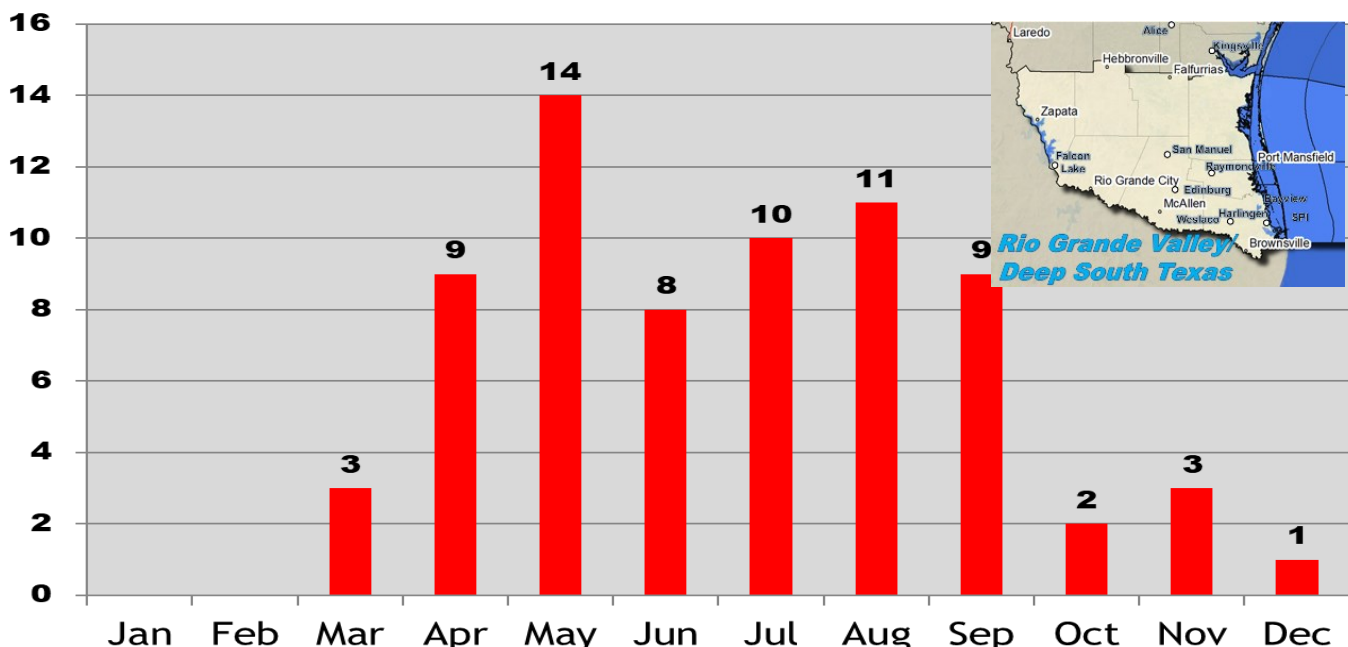
Tornado Warning Issued by your National Weather Service office in the Rio Grande Valley. Typically runs for a short time span, usually 15 to 45 minutes and covers a small area. Means a tornado has been sighted or a strong circulation has been detected by radar. If a **Tornado Warning** is issued for your area, seek shelter immediately!!

Remember, tornadoes can occur even if a **Tornado Watch or a **Tornado Warning** is not in effect!!**

What do you do when a tornado is approaching or a **Tornado Warning is issued?**

- 1) In a home or business, go to the safest place, usually on the lowest floor of the building in a central room away from windows. Get under a sturdy piece of furniture, and protect your head with a bicycle helmet. If you own no helmet, use pillows or a blanket.
- 2) If driving and cannot avoid an oncoming tornado, pull over and park. Put your head down and cover your head with your hands or soft items. If there's time, get into a nearby ditch or depression.
- 3) If caught outside, lie flat in a nearby ditch or depression.
- 4) Abandon mobile homes. Even if tied down, they will offer no protection in a tornado.

1996-2023 70 Tornadoes / Average 2.5 Per Year, Rio Grande Valley





Tornado/Windstorm Preparedness

1. Develop a severe weather action plan and conduct frequent drills. Children should kneel on the floor, putting their head on the ground and covering their neck with their hands. The neck and lower head are the most vulnerable parts of the body to flying debris.
2. Each school should be inspected and shelter areas designated by a registered engineer or architect. Schools without basements should use interior rooms and hallways on the lowest floor and away from windows.
3. Have a compressed air horn or megaphone to activate the alarm in case of power failure.
4. Make special provisions for disabled students or those in trailers.
5. Have someone on hand to turn off the gas or electricity if the school is damaged.
6. Prepare to keep children at school beyond regular hours if threatening weather is expected. Children are safer in school than traveling on the roadways during severe weather. Students should NOT be sent home early if severe weather is approaching.
7. Large, high rooms are dangerous when a tornado is approaching. Gymnasiums, cafeterias, and auditoriums offer no protection in a tornado. Other large facilities can take similar measures for tornado preparedness.



**Interior rooms and hallways
offer the best protection!**

**Gymnasiums, cafeterias,
and auditoriums offer no
protection!**



What can you do ahead of time to prepare your home or business for a tornado threat?

1. **Develop a plan for your family or coworkers at your place of residence or business.**
2. **Do frequent tornado drills.**
3. **Know the county where you live.** All National Weather Service warnings are issued by county.
4. **Purchase a NOAA Weather Radio with a warning alarm and battery back-up.** It will automatically be activated when a warning is issued.

What else can you do to prepare for a tornado?

- Remain alert for signs of an approaching tornado.
- Be aware of rapidly darkening skies.
- Listen for approaching strong winds or the sound of a freight train.
- Look for rotation in clouds or a "wall cloud," a distinct lowering from the back of a thunderstorm. In the Rio Grande Valley, hazy skies, smoke stacks and farm silos can make sighting tornadoes difficult. Also, tornadoes are often obscured by rain or can occur at night.



The A-B-C's of Windstorm Resilience

NWS Calls-to-Action statements for severe thunderstorm winds or tornadoes urge people to seek safety within their homes, often recommending an interior bathroom or closet on the ground floor, and protecting their heads with bicycle or similar helmets, and their bodies with blankets or pillows. But what if the home is unable to withstand even low-end (i.e. 60 mph) thunderstorm or tornado winds? On April 24 2015, wind gusts of over 65 to 72 mph [blew down makeshift, sub-standard construction in colonias north of Weslaco and Donna](#); other heavy structural damage has been surveyed from similar winds in *colonias* across the Rio Grande Valley in nearly every year since, culminating with the devastation (and human casualties) with the [Laguna Heights tornado on May 13, 2023](#).

There are methods to help build resilience to lower-level severe thunderstorm winds in neighborhoods with sub-standard construction. It's as easy to remember as one's ABCs: **A**nchoring, **B**races, and **C**onnections!

Anchoring

Poor anchorage is perhaps the single-most reason for building failure in sub-standard construction. A sub-standard home or other structure sitting on a pier-block "foundation" with either no anchored connection deep into the ground or a weak/poorly designed cable/anchor system, is susceptible to total destruction by strong winds by moving part or all of building off its foundation or worse, blowing it apart or rolling it. Anchoring with strong cables deep into the ground ensures that the structure will not be pushed off the raised foundation—or worse, rolled.

Braces

Braces are most common elements for roofs of conventional homes, particularly those with gable ends (for example, "A" frames). Braces can fasten the gable-end roof to the ceiling beams, adding important resilience to winds blowing perpendicular to the gable end. Braces are also common on garage doors—though most sub-standard buildings in the RGV do not have garages. Bracing techniques can be used even on flat or gently-sloped roofs of sub-standard construction to provide resistance to winds.

Connections

Connectors include everything from bolts and nails to straps and clips, for all foundation and frame elements of any type of home. Many sub-standard buildings in *colonias* and beyond are built with poor construction standards, from poorly and uneven nailed floor to wall, frame to wall, and wall to roof connections to the quality of the connectors (rusted nails, many not even connected properly). Using stronger, better connections along the building's wind load will ensure a better opportunity for the building to remain standing in strong, but sub-hurricane-force gusts.

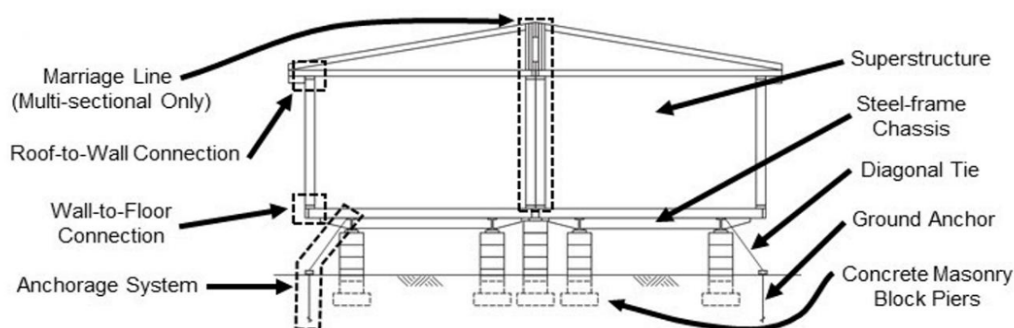


Figure 2-1. Typical structural components of a manufactured home (modified based on Figure 2-6 in FEMA (2009) [22])



Air Quality

One might consider poor air quality the “silent hazard of spring” for the Rio Grande Valley. While it doesn’t garner the attention that flooding, lightning, and tornadoes receive, it frequently becomes a nuisance to persons with respiratory difficulty such as allergies and asthma. On occasions when the amount of burning (right) combines with a persistent southeast wind flow in the lower levels of the atmosphere and broad high pressure across the Gulf, which creates inversions, particularly in the morning, that trap particulates, the threat moves from nuisance to critical. This requires those with respiratory ailments to remain indoors, in air-conditioned facilities with well-filtered air. For others, dust masks able to block smoke, soot, and other particulates at the 2.5 micrometer diameter level and above can reduce the impact.



Springtime is Primetime

Beginning in March and peaking in April or May, agricultural burning (sometimes referred to as slash and burn deforestation) is common from Central America through southern Mexico and the Yucatan Peninsula (above). The burning is a cheap and easy way to improve crop yields in countries without the economic means to use fertilizers, pesticides, or organic methods. During times when the persistent atmospheric flow is from the south or southeast, which is actually common at several points each spring, some of this smoke will reach Texas and extend as far north as Austin/San Antonio and Houston, sometimes reaching to the Dallas/Fort Worth Metroplex. The Rio Grande Valley is often at the “tip of the spear” for Texas impacts, and they will often persist longer than anywhere else in the state since wind-shifting fronts pull up short of the region.

Smoke doesn’t have to arrive via Mexico or Central America. A dry, warm to hot, and breezy spring can increase the possibility of rapid growth of wildfires in Texas; should those fires occur in Texas to the west and north of the Rio Grande Valley, smoke can be of equal or higher intensity than the agricultural fires to our south.

Prepare to Breathe Better

On days when the Air Quality Index (AQI, left) reaches “moderate”, persons acutely sensitive to particulates should be armed with a [NIOSH-Approved N95 Mask](#). On days when the AQI reaches “unhealthy for sensitive groups”, acutely sensitive persons should have an indoor plan and ensure that air conditioning units are operating properly and filters are clean. Others should strongly consider a dust mask. On the rare occasion that the AQI reaches “unhealthy” or higher levels, most people should cease working or exercising outdoors and remain in air conditioned facilities with proper operation and clean filters, which may need to be replaced often in such an event.

Air Quality Index (AQI) Values	Levels of Health Concern	Colors
When the AQI is in this range:	...air quality conditions are:	...as symbolized by this color:
0 to 50	Good	Green
51 to 100	Moderate	Yellow
101 to 150	Unhealthy for Sensitive Groups	Orange
151 to 200	Unhealthy	Red
201 to 300	Very Unhealthy	Purple
301 to 500	Hazardous	Maroon



What is SKYWARN?

SKYWARN is a concept developed in the early 1970s that was intended to promote a cooperative effort between the National Weather Service and communities. The emphasis of the effort is often focused on the storm spotter, an individual who takes a position near their community and reports wind gusts, hail size, rainfall, and cloud formations that could signal a developing tornado. Another part of SKYWARN is the receipt and effective distribution of National Weather Service information. SKYWARN is a program sponsored by your National Weather Service Office in conjunction with your local Emergency Management Organization or Amateur Radio Organization. It is a group of trained volunteers that watch the skies during severe weather and relay reports back to your local Emergency Management Official and/or the National Weather Service (NWS). These volunteers provide valuable information to help the NWS save lives and reduce property damage in your community by improving warnings.

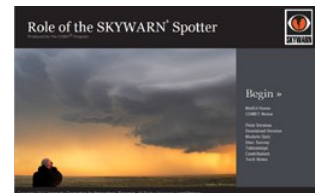
How do I join SKYWARN?

Each NWS office around the country is the primary point of contact for each local SKYWARN program. If you or your community is interested in sponsoring a SKYWARN Program, contact your local NWS office to schedule a training session. The Brownsville/Rio Grande Valley Weather Service conducts most SKYWARN classes between the months of February and April before the spring severe weather season peaks from April to June. These training sessions are planned to be done virtually this spring, at any time to best fit your schedule. For further information on particular programs, please contact Brian Miller at brian.miller@noaa.gov or check the "Top News" of our website, weather.gov/rgv, for a link to the latest calendar of locations, dates, and times for courses in the Rio Grande Valley.

Online Skywarn Training Course!

Becoming a Skywarn Spotter just became easier with the development of the online Skywarn Spotter Training Course. There are two courses, including: "[Role of the Skywarn Spotter](#)" and "[Skywarn Spotter Convective Basics](#)".

These courses cover the basics of being a Skywarn Spotter. They are free and accessible from the METED website. www.meted.ucar.edu

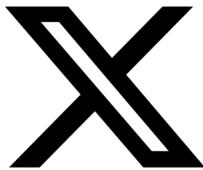


Once you complete these two courses, e-mail your certificate to barry.goldsmith@noaa.gov, and you will be added to our spotter e-mail list.

National SKYWARN organization	skywarn.org
NWS Brownsville/RGV SKYWARN information	weather.gov/rgv/skywarn



Rio Grande Valley Hazardous Weather Awareness Guide 2024 National Weather Service Brownsville/Rio Grande Valley, Texas



Reporting Hazardous Weather: Get Social!

We're on Facebook, Twitter, and YouTube...and other social media platforms in the future! Click on the icons above to go directly to our Facebook page (left), Twitter/X Feed (center), or YouTube channel (right). If you received this as a printed booklet, use your smart device Quick Response scanning app to join us on both social media sites. During severe weather, we want to hear from you! Tell us your stories, share your photos and videos, and help us serve thousands of other followers critical information that may help save property losses or even save a life. A screen shot of our Facebook page from the March 29th, 2012 hail storm (below) shows the effectiveness of social media. If a picture is worth a thousand words, pictures, videos, and stories may be priceless if they help better communicate imminent threat from wind, hail, floods, tornadoes, or lightning.

Safety is priority 1 when reporting hazardous weather. You hold four ACES in your hand:

Awareness: Constantly observe the situation around you

Communication: Ensure others know where you are

Escape Routes: Have a clear path to safety well before danger arrives

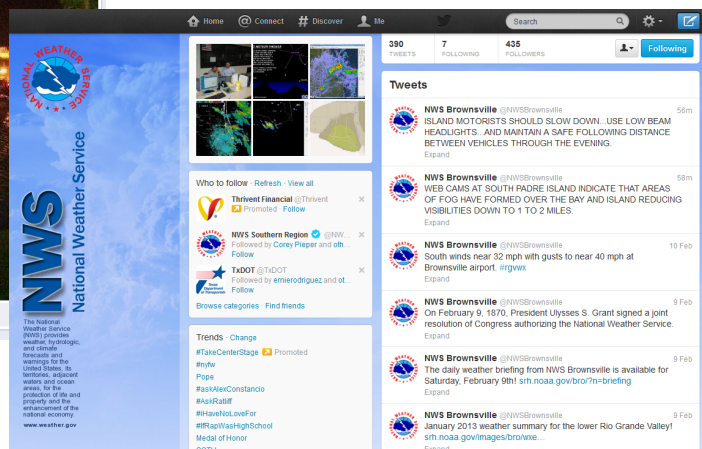
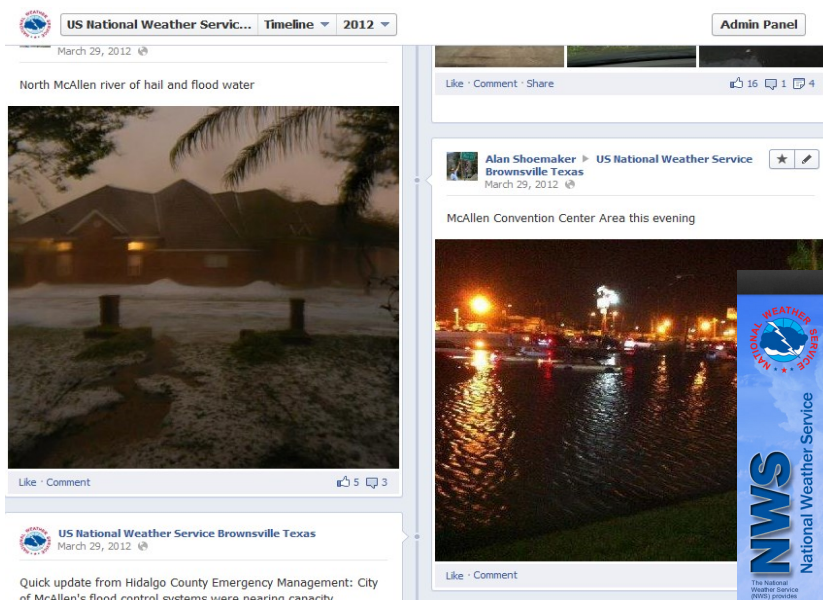
Safe Zones: Know where you're going to seek a safe, sturdy shelter if danger arrives.



Facebook



Twitter



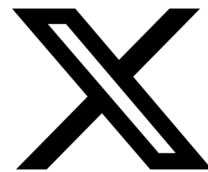


#RGVspotter

Storm spotting via social media

What is #RGVSpotter?

- It is a way of sending reports directly to the NWS
- Helps with verification of severe weather
- Harnesses the power and immediacy of social media
- Proves to be a huge asset to warning forecasters



What do I need to be an #RGVSpotter volunteer?

- A Twitter account
 - A smartphone with camera and GPS (*strongly encouraged*)
- A desire to serve others and aid in the process of protecting people and property

Area covered by #RGVSpotter:



What should you report?

- Tornado/funnel cloud
- Hail of any size (use coin or ball sizes)
- 50 mph wind and higher (measured)
- Structural damage caused by weather
- Trees or power lines down
- Measured heavy rain and/or flooding
- Winter precipitation of any type
- Dense fog

What to include in your reports

- Brief description of weather you see
- Specific location (or geo-tagged tweet)
- Pictures are welcome!
- Time (if not at time of tweet)
- #RGVSpotter hashtag

Maintaining the integrity of #RGVSpotter

- This program only works if the hashtag is used for its original intent and purpose
- Using #RGVSpotter for things other than weather reports results in a cluttered search result, which increases the chance of vital information being overlooked
- If RT'ing reports, REMOVE #RGVSpotter tag (*avoids duplicate reports*)

You should NOT

- Risk the safety of you or anyone with you for the sake of a picture of report!
- Storm chase!
- Abuse the hashtag





Reporting Hazardous Weather: Phone and Web

Phone:

Call 956-504-1432 ext. 7

- Identify yourself.
- Provide a call-back number in case we need more information.
- Use the **T.E.L.** method:
 - **Time.** Provide the time you witnessed the event, and how long it lasted. Not the time of the call.
 - **Event.** Describe the event with as much detail as possible.
 - **Location.** Provide your location. Street intersections, addresses, etc. is sufficient. Latitude/Longitude from GPS or smart phones is better.

Are you a Trained Spotter?

Use the 1-800 number listed on your reporting sheet or your ID card.
Provide your spotter ID (i.e. CAM-xxx).
“T.E.L.” us what you witnessed.

Safety is priority 1 when reporting hazardous weather. You hold four ACES in your hand:

Awareness: Constantly observe the situation around you

Communication: Ensure others know where you are

Escape Routes: Have a clear path to safety well before danger arrives

Safe Zones: Know where you’re going to seek a safe, sturdy shelter if danger arrives

Online:

weather.gov/rgv/stormreport

NATIONAL WEATHER SERVICE
NATIONAL OCEANIC AND ATMOSPHERIC ADMINISTRATION

FORECAST PAST WEATHER SAFETY INFORMATION EDUCATION NEWS SEARCH

Forecast by ZIP code: Go

[Help](#)

Rain And Snow In Northeast
A system moving into the Northeastern U.S. will attempt to interact with a powerful storm off the East Coast today. Expect showers and rain along coastal sections of the northern Mid-Atlantic into the Northeast. Rain mixed with snow is also possible. Some snow accumulations are expected for southeastern New England, interior portions of the Northeast and the Appalachian region.
[Read More >](#)

Submit a Storm Report
[Weather.gov > Brownsville/Rio Grande Valley, TX > Submit a Storm Report](#)

Brownsville/Rio Grande Valley Weather Port

Current Hazards Current Conditions Radar Forecasts Rivers and Lakes Climate and Past Weather Local Programs

Use the form below to submit your storm report to National Weather Service Brownsville/Rio Grande Valley.

Storm Report Form

This interface is intended to be used solely for the relay of storm information to the NWS. Other comments or information should be sent to the National Weather Service Brownsville/Rio Grande Valley, Texas.

* Required

Event Location
Enter date/time/location of event. Please reference to major roadway or intersection for events within towns/cities.

County
Choose County from drop menu



NOAA Weather Radio

General Information

NOAA Weather Radio (NWR) is a nationwide network of radio stations broadcasting continuous weather information direct from a nearby National Weather Service office. NWR broadcasts National Weather Service warnings, watches, forecasts and other hazard information 24 hours a day. Working with the Federal Communications Commission's new Emergency Alert System, NWR is an "all hazards" radio network, making it the single source for the most comprehensive weather and emergency information available to the public. NWR now broadcasts warning and post-event information for all types of hazards - both natural (such as earthquakes and volcano activity) and technological (such as chemical releases or oil spills). Known as the "Voice of the National Weather Service," NWR is provided as a public service by the Department of Commerce's National Oceanic & Atmospheric Administration. The NWR network has more than 480 transmitters, covering the 50 states, adjacent coastal waters, Puerto Rico, the U.S. Virgin Islands, and the U.S. Pacific Territories. NWR requires a special radio receiver or scanner capable of picking up the signal. Broadcasts are found in the public service band between 162.400 and 162.550 megahertz (MHz). Spanish Language station WZ-2542 was restored in 2019, now located southwest of Harlingen in Bluetown, TX.

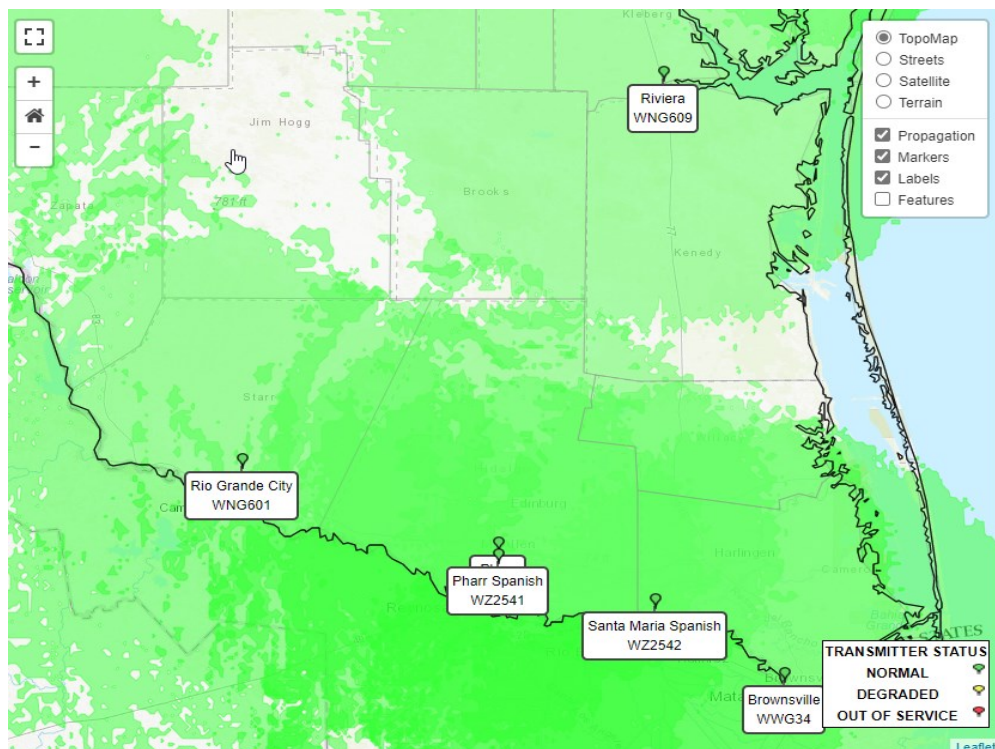


What types of NOAA Weather Radio receivers are available?

NOAA Weather Radio receivers come in many sizes and with a variety of functions. Many radios can receive an alarm tone, triggered when the NWS issues severe weather announcements or emergency information. Most NOAA Weather Radio receives are either battery-operated portables or AC-powered desktop models with battery backup, so they can be used in many different situations. Some CB radios, scanners, short wave and AM/FM radios are also capable of receiving NWR transmissions. For more information on NOAA Weather Radio and setup instructions, please go online and visit www.weather.gov/nwr/.



Right: Coverage maps for NOAA Weather Radio (English and Spanish) serving the RGV and Deep South Texas Ranchlands. Darker shades indicate stronger coverage, which is highest across the populated RGV.





Wireless Emergency Alerts (WEA)

Wireless Emergency Alerts Save Lives

Wireless Emergency Alerts (WEA) are alert messages sent to your mobile phone during an emergency. No sign-up is required.

Patrick Winter, owner of Red Barn Farm near Northfield, MN, was hosting his mother's 77th birthday party on September 28, 2018, one of the most prolific tornado days in the state's history.

Amid the celebration, Winter and his family received continued Wireless Emergency Alerts from the National Weather Service about an incoming tornado. The 13 people (and one dog) in attendance sought shelter immediately; minutes later, the tornado struck, demolishing the Big Red Barn.

Winter said the alerts "saved my entire family, otherwise we'd have been gone; a mile down the road with the rest of the barn."



What Kind of Alerts?

WEA are sent only during an emergency. They are sent by government alerting authorities through your mobile carrier.

Types of alerts include:

- Extreme weather warnings
- Local emergencies requiring evacuation or immediate action
- AMBER Alerts
- Presidential Alerts during a national emergency

The National Weather Service sends WEA messages for:

- Dust Storm Warnings
- Extreme Wind Warnings
- Flash Flood Warnings*
- Hurricane/Typhoon Warnings
- Severe Thunderstorm Warnings*
- Snow Squall Warnings
- Storm Surge Warnings
- Tornado Warnings
- Tsunami Warnings

* High-damage threat Warnings only

WEA messages are relevant to your location – you only receive WEA messages when you and your cell phone are in the area of the emergency. If you visit another city, you will only receive alerts for that location and not your home town.



National Weather Service

weather.gov/wrn/wea

Full Details at weather.gov/wrn/wea



Wireless Emergency Alerts (WEA)

What Do the Alerts Look Like?

WEA will look like a text message. The WEA message will typically show the type and time of the alert, any action you should take, and the government agency issuing the alert.

WEA messages include a special tone and vibration, both repeated twice.

What Should I Do If I Receive an Alert?

Follow any action advised by the emergency message. Seek more details from your favorite TV or radio station, NOAA Weather Radio, news website, desktop application, mobile application, or other trusted source of information.

Do I Need to Sign Up for WEA?

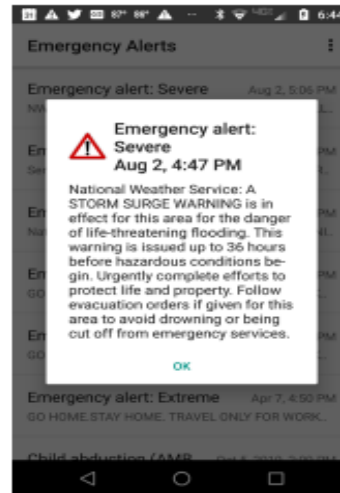
NO! No signup is required! Alerts are sent automatically to WEA-capable phones during an emergency. WEA is free! No need to download an app.

How Do I Know WEA is Enabled on My Phone?

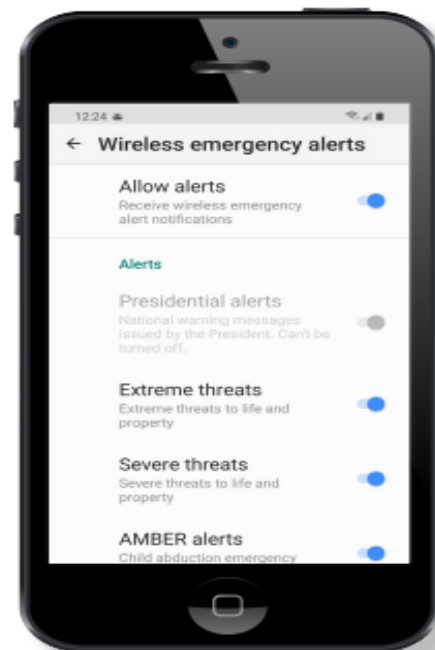
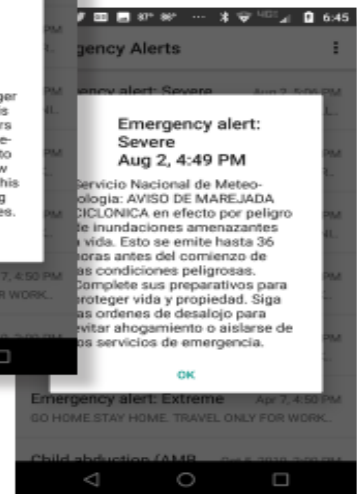
Many new cell phones are WEA-capable. Prepaid mobile devices may also be WEA-capable. For information about which mobile devices are WEA-capable and carrier participation, please contact your wireless carrier. And don't turn them off! Keep them on to ensure that you receive alerts for severe weather and other emergencies.

For More Information

More than 100 mobile carriers, including all of the largest carriers, participate in the WEA program. For information, contact your wireless carrier.



NWS WEA messages are available in Spanish on many phones if the language is set to Spanish.





Rio Grande Valley Hazardous Weather Awareness Guide 2024
National Weather Service Brownsville/Rio Grande Valley, Texas



Important Contact Information

National Weather Service Brownsville/Rio Grande Valley, Texas
20 S. Vermillion Avenue
Brownsville, TX 78521
(956) 504-1432 weather.gov/rgv

Phone Numbers/E-mail Addresses:

Meteorologist-In-Charge, Mike Buchanan	x222	mike.buchanan@noaa.gov
Warning Coordination Meteorologist, Barry Goldsmith	x223	barry.goldsmith@noaa.gov
Science and Operations Officer (Vacant)	X224	
Information Requests/Forecasts	x2	sr.bro-webmaster@noaa.gov

Internet Addresses:

State of Texas Division of Emergency Management	https://tdem.texas.gov
Federal Emergency Management Agency (FEMA)	https://fema.gov
National Preparedness Portal	https://ready.gov
Federal Alliance for Safe Homes (FLASH)	https://flash.org
NWS Flood Safety	https://www.floodsafety.noaa.gov
NWS Lightning Safety	https://www.lightningsafety.noaa.gov
NWS Fire Weather Safety	https://weather.gov/safety/wildfire
Storm Prediction Center	https://www.spc.noaa.gov
Weather Prediction Center	https://www.wpc.ncep.noaa.gov
Texas Interagency Coordination Center	https://ticc.tamu.edu
National Environmental Information Center	https://www.ncei.noaa.gov
National Drought Portal	https://drought.gov
NWS Rip Current Safety	https://www.ripcurrents.noaa.gov

