

# POTENTIAL TROPICAL CYCLONE 4 BRIEFING

10:30 AM CT

Saturday, August 20, 2022

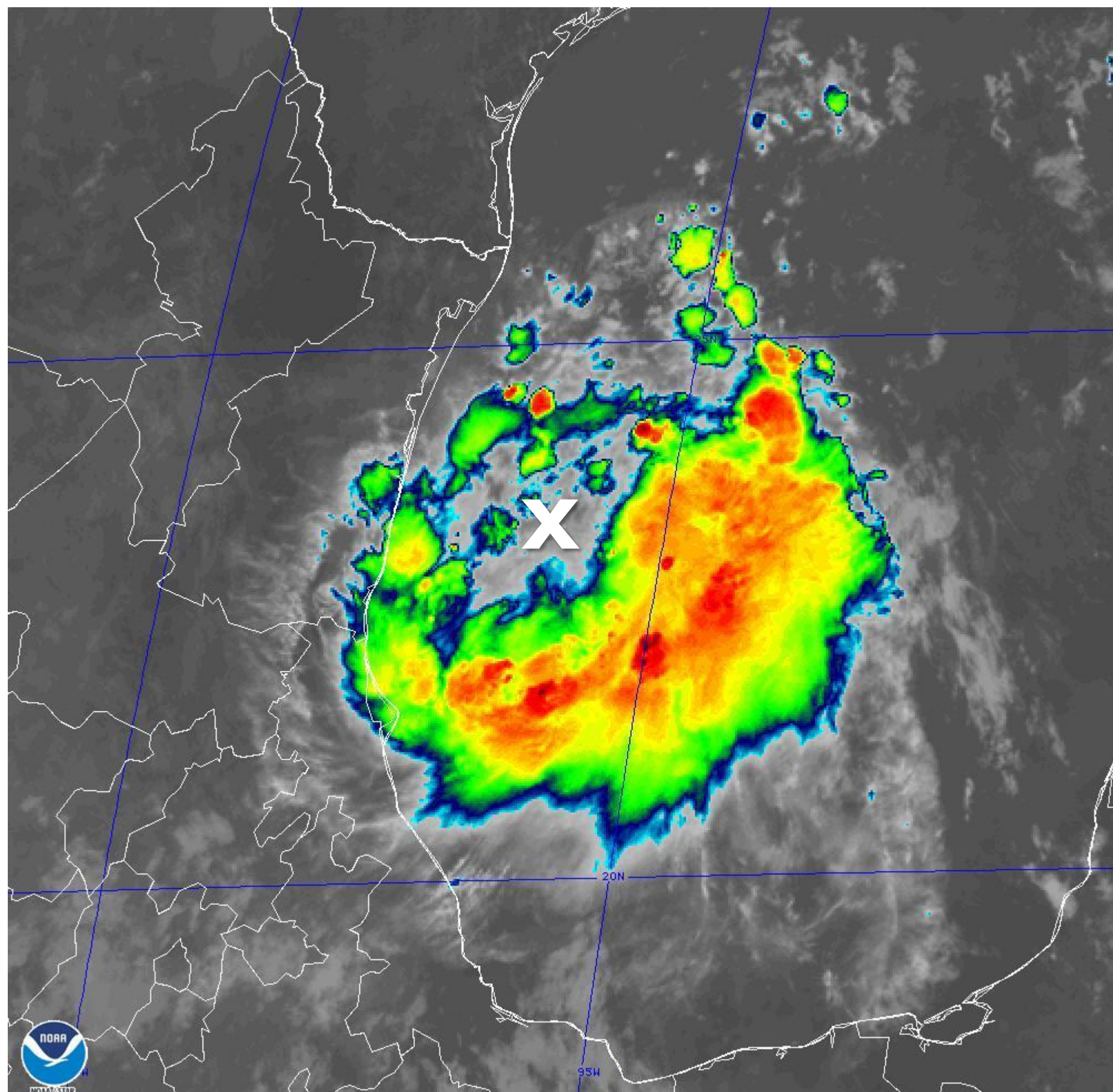
What has changed: System struggling to organize; impacts reduced

Next Briefing: Saturday, 4 and 430 PM



# Situation Overview

## Potential Tropical Cyclone 4



20 Aug 2022 14:29Z - NOAA/NESDIS/STAR GOES-East - Band 13 Band 13

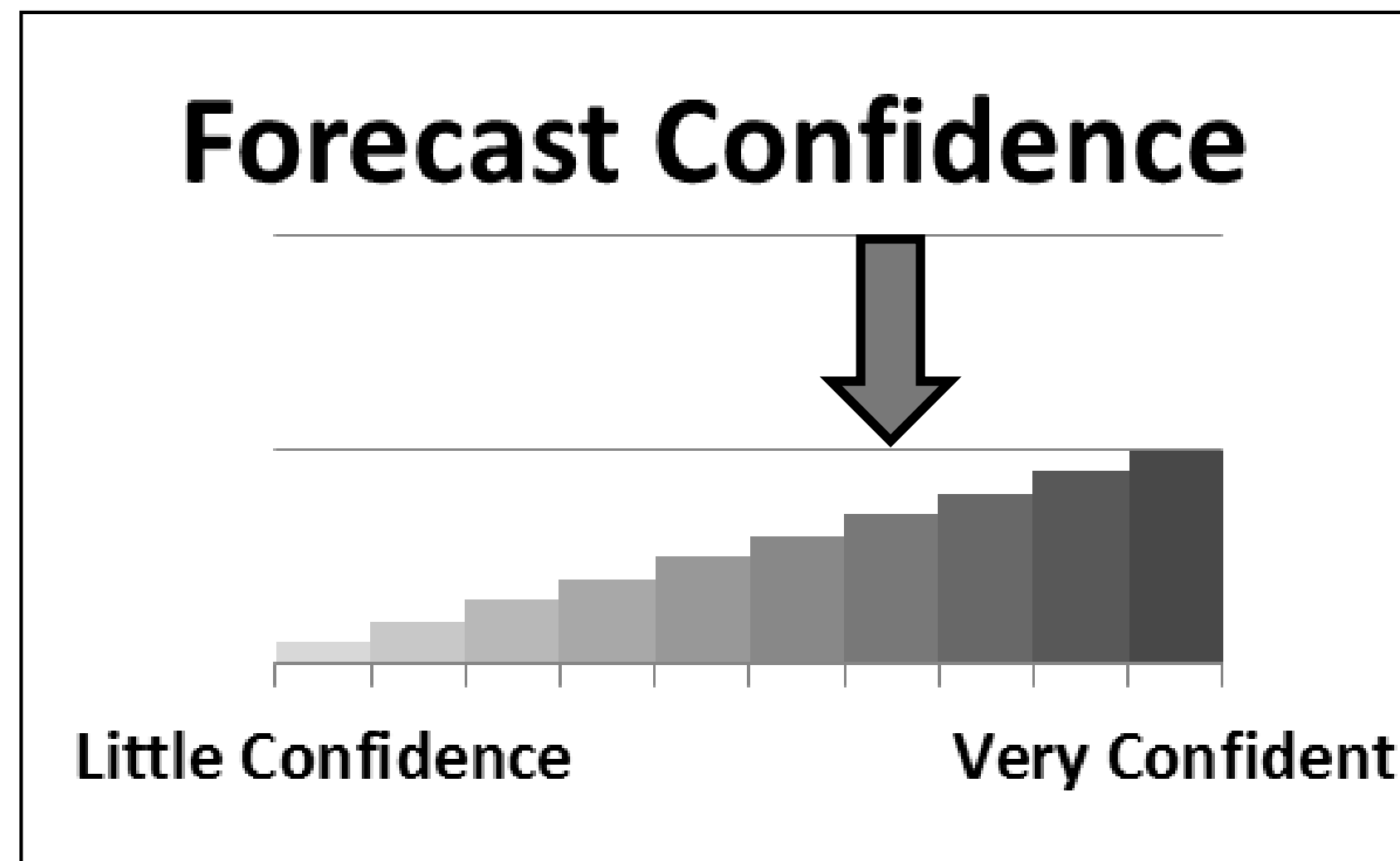
- System remains sheared and disorganized, with northerly shear pushing stronger storms into the southern semicircle over the Gulf
- Confidence has increased on lower intensity and lesser overall impacts to the lower Rio Grande Valley
- **Tropical Storm Warnings** remain in effect for Cameron/Willacy/southern Hidalgo County and the Lower Texas Gulf waters from Port Mansfield to the Mouth of the Rio Grande Out 20 nautical miles – but these may be cancelled later today
- Track of the cyclone brings it across northeastern Tamaulipas late this afternoon or early evening
- Primary impact timing: **This afternoon and evening**
- **Primary impacts should be felt across the Lower Texas Gulf waters and in Cameron and Willacy Counties.** In order, these include:
  - Locally heavy rainfall and potential minor flooding
  - Gusty winds 35 to 40 mph in stronger cells or small bands, especially east of IH69E
  - Stiff south to north longshore current at South Padre Island



# Key Take-Aways – Potential Impacts

## Potential Tropical Cyclone 4

- Potential rainfall: 1-2 inches, locally 3 inches, mainly east of IH-69E (Cameron-Kenedy); less farther west. Sea breeze enhanced storms Saturday and Sunday afternoon could drop 2” rainfall in an hour between IH-69C and IH-69E. Most of the rain will fall **in isolated to scattered showers/storms** rather than steady bands. Minor flooding is likely in **poor drainage locations underneath these cells**
- Gusty winds 40 mph in stronger cells or localized bands mainly along/east of IH-69E in Cameron/Willacy could cause minor damage to unfastened items and cause difficult driving. **Outside of rain, winds will be 10 to 20 mph by day; 5 to 10 mph at night.**
- Tropical storm force gusts possible across the Gulf and Laguna Madre from Port Mansfield in clusters or bands will make boating dangerous through this evening
- South to north longshore currents will continue into Sunday at area beaches. Embedded rips are possible.



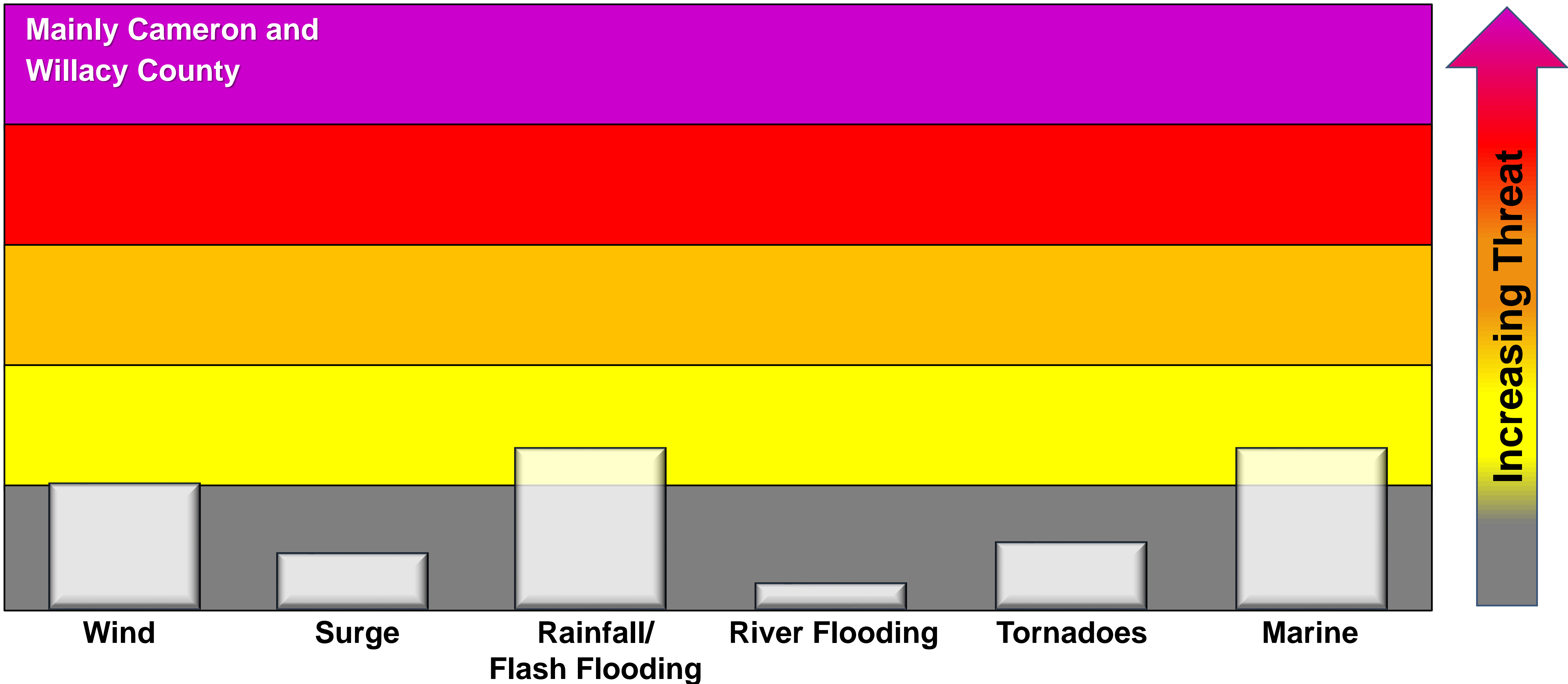
Confidence is **high** on track and timing.  
Confidence **has risen to medium-high** on intensity and location of impacts



# Threat Levels

Potential Tropical Cyclone 4

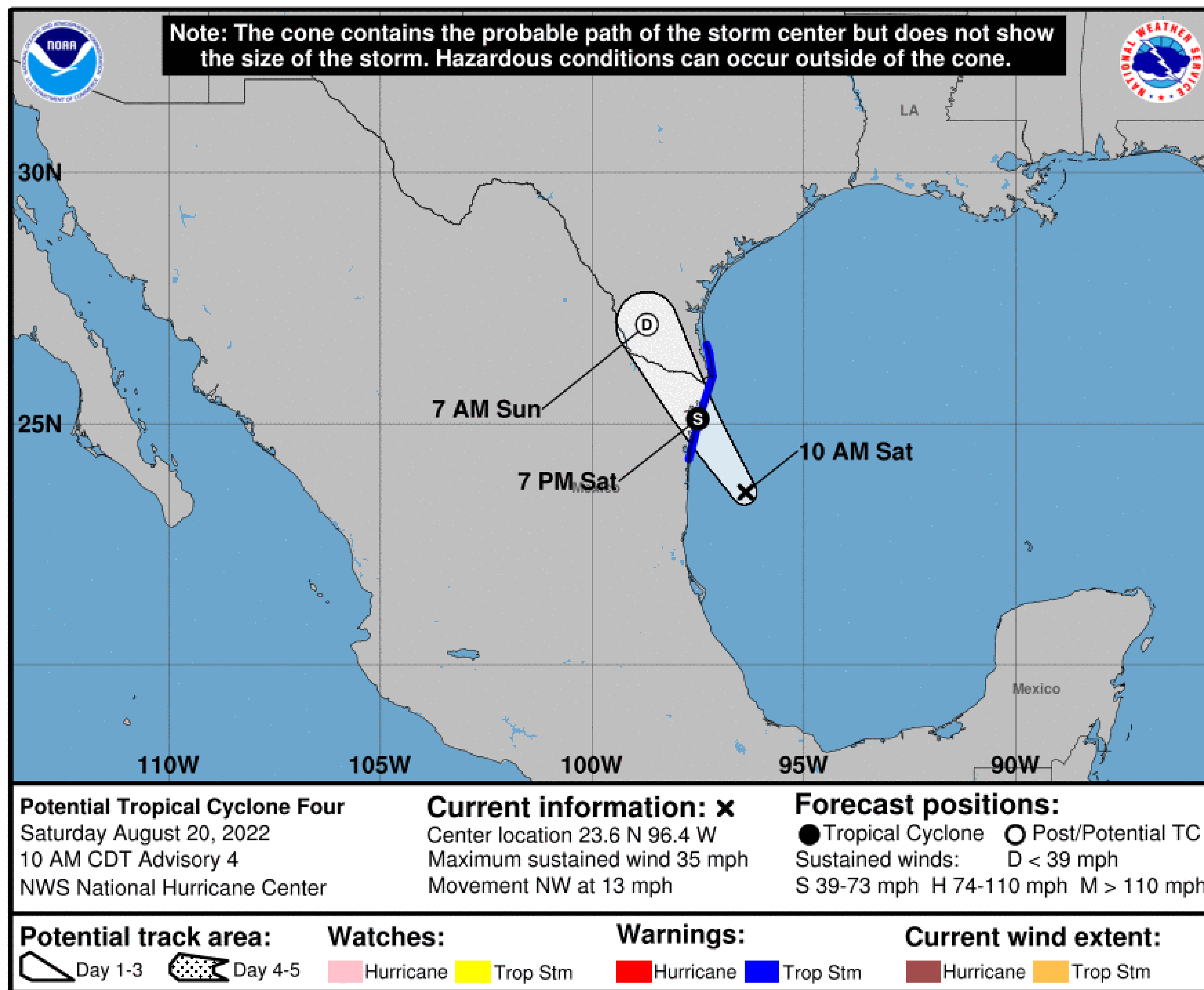
For information on specific hazards in this area, please go to <https://www.weather.gov/srh/tropical?office=bro>





# Cone and Track

## Potential Tropical Cyclone 4



- Fast moving system will be onshore before sunset today
- Best chances for heavier rain and stronger winds are on the east side of the track, but more “typical” late summer isolated to scattered showers/storms can be expected each day, favoring locations east of IH-69C
- Fair weather will be dominant most of the time tonight and Sunday.



# Tropical Storm Warning Area

Potential Tropical Cyclone 4



- Rain is not expected to be “continuous”; when not raining, daytime winds 10-20 mph (from the southeast); nighttime winds 5 to 10 mph except a little higher on the beach
- Wind gusts of 40 mph in stronger bands could reach southern Hidalgo, hence the additional warning there...but confidence is low



# Expected Storm Total Rainfall

Potential Tropical Cyclone 4

## Expected Rainfall Accumulation

Weather Forecast Office  
Brownsville/RGV, TX  
Issued Aug 20, 2022 3:41 AM CDT


**Higher Amounts Where Stronger Cells/Persistent Bands Occur**





- In areas where stronger cells of bands to not occur, rainfall should be less than 0.25"
- Overnight, rainfall is now expected to be less, with possible exception along the immediate coast (Barrier Islands to Laguna Madre)
- Leftover moisture could induce isolated/scattered late Sunday morning-mid afternoon storms mainly between IH-69C and IH-69E





# Next Briefing: Saturday between 430 and 5 PM Aug. 20 Method: Email


 **Web:** <http://weather.gov/rgv>

 **Phone:** (956) 504-1432 ext. 2

 **E-mail:** [sr-bro.ops@noaa.gov](mailto:sr-bro.ops@noaa.gov)

 **Facebook:** NWSBrownsville

 **Twitter:** NWSBrownsville

 **YouTube:** NWSBrownsville

*For the latest graphics and information go to: [www.hurricanes.gov](http://www.hurricanes.gov) or <https://www.weather.gov/srh/tropical?office=bro>*