

**MONTHLY REPORT OF HYDROLOGIC CONDITIONS**

REPORT FOR:  
MONTH            YEAR  
April            2019

TO: Hydrologic Information Center, W/OS31  
NOAA's National Weather Service  
1325 East West Highway  
Silver Spring, MD 20910-3283

SIGNATURE  
/s/ Jessica Neiles, Meteorologist

DATE  
May 26, 2019

*When no flooding occurs, include miscellaneous river conditions below the small box, such as significant rises, record low stages, ice conditions, snow cover, droughts, and hydrologic products issued (NWS Instruction 10-924).*

An X inside this box indicates that no flooding occurred within this hydrologic service area.

Overall, the month of April was cool and wet across Northern New York and Vermont. It was an active month, especially from a hydrology perspective. Monthly rainfall totals ranged from 2 to more than 6 inches. The majority of our hydrologic service area was at least an inch above normal for the month of April. Monthly snowfall ranged from an inch to over a foot in the Northeast Kingdom of Vermont. Much of the area had below normal temperatures, which isn't surprising considering how wet and cloudy it was. We did lose the rest of our snow pack during the month of April, aside from the most sheltered locations. (Snow still remains on Mt Mansfield.)

During the Sunday night into Monday morning timeframe on April 14 and 15 much of central and southern Vermont accumulated between an inch and three inches of rain in the first of two heavy rain events. There was also significant snowmelt, and many area rivers were pushed above flood as a result. A flash flood warning was also issued during the early morning hours, there was significant infrastructure damage reported. In total, nine river gages reached flood with this event.

Just four days later we had a second heavy rain event, with widespread 1 to 2 inch rainfall totals. Rivers were already running high, and with this event eight river gages reached flood stage. Five of those gages had already been above flood at the beginning of that same week.

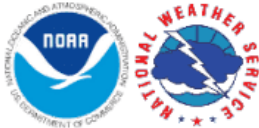
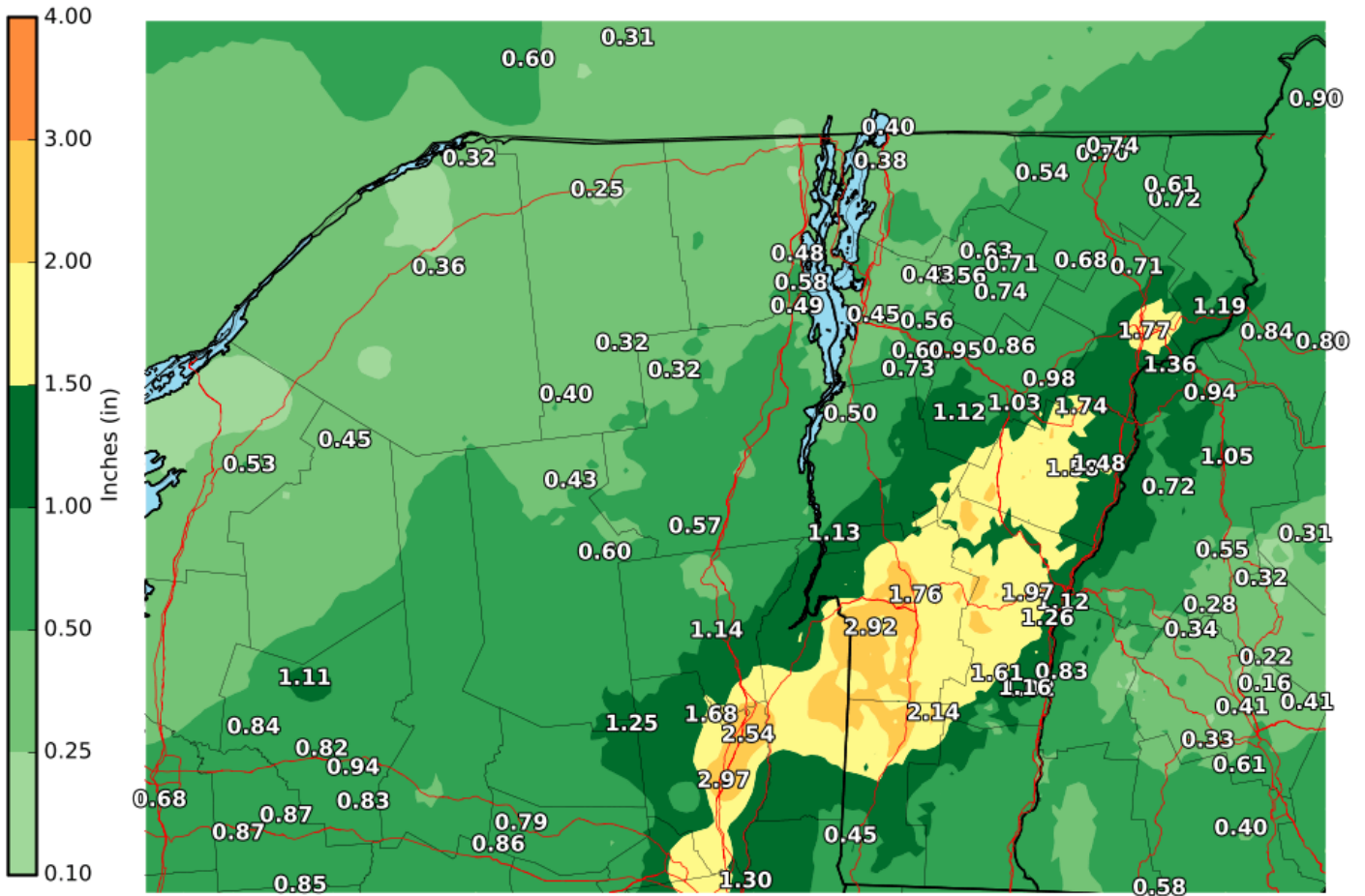
Other flooding of note for the month of April was Lake Champlain surpassing flood stage. On April 21<sup>st</sup> the lake went over 100 feet and remains above flood stage through the end of May. The lake crested around 100.86' on April 29<sup>th</sup>.

Gage ID	River/Stream	Location	FS	Above Flood Date/Time	Flood Crest	Date/Time
<b>CENV1</b>	Otter Creek	Center Rutland, VT	8	4/15 9:30z	12.34	4/16 00:15z
<b>WATV1</b>	Winooski R.	Waterbury, VT	419	4/15 6:30z	419.85	4/15 15:30z
<b>ESSV1</b>	Winooski R.	Essex Junction, VT	12	4/15 21:00z	13.74	4/16 6:00z
<b>ESSV1</b>	Winooski R.	Essex Junction, VT	12	4/20 unknown	due to data	dropout
<b>PASV1</b>	Passumpsic R.	Passumpsic, VT	14	4/15 17:15z	14.52	4/15 21:30z
<b>PASV1</b>	Passumpsic R.	Passumpsic, VT	14	4/20 21:30z	17.25	4/21 4:00z
<b>RANV1</b>	Ayers Brook	Randolph, VT	8	4/15 10:45z	9.55	4/15 12:15z
<b>COVV1</b>	Barton R.	Coventry, VT	8	4/1 4:45z	8.54	4/1 17:00z
<b>COVV1</b>	Barton R.	Coventry, VT	8	4/14 9:15z	8.93	4/16 1:45z
<b>COVV1</b>	Barton R.	Coventry, VT	8	4/20 9:00z	9.09	4/20 22:15z
<b>COVV1</b>	Barton R.	Coventry, VT	8	4/28 6:45z	8.09	4/28 9:45z
<b>ROUN6</b>	Lake Champlain	Rouses Point, NY	100	4/21 19:45z	100.86	4/29 21:15z
<b>ASFN6</b>	East Branch Ausable R.	Ausable Forks, NY	7	4/20 10z	8.27	4/20 15:30z
<b>JONV1</b>	Lamoille R.	Johnson, VT	13	4/20 14z	14.14	4/20 20:30z
<b>NTYV1</b>	Missisquoi R.	North Troy, VT	9	4/20 12:45z	10.21	4/20 23:00z
<b>EHVV1</b>	E. Branch Passumpsic R.	East Haven, VT	6.5	4/15 12:45z	6.70	4/15 14:30z
<b>EHVV1</b>	E. Branch Passumpsic R.	East Haven, VT	6.5	4/20 6:15z	8.20	4/20 12:45z
<b>JVLV1</b>	Lamoille R.	Jeffersonville, VT	450	4/16 1:30z	450.16	4/16 4:15z
<b>JVLV1</b>	Lamoille R.	Jeffersonville, VT	450	4/20 14:30z	451.70	4/21 4:00z
<b>WLRV1</b>	Wells R.	Wells River, VT	6	4/15 13:30z	7.21	4/15 17:30z

**Table 1: Rivers which reached flood in the month of April 2019**

## 24-hr Precipitation Totals

Ending at: 04/15/2019 07:00 AM EDT



**National Weather Service**  
**Burlington, VT**  
 04/15/2019 11:37 AM EDT

**Follow Us:**     
[weather.gov/Burlington](http://weather.gov/Burlington)

Figure 1: 24 hour precipitation totals ending on Monday April 15<sup>th</sup>, 2019

## North Country Total Precipitation ~ January 2019

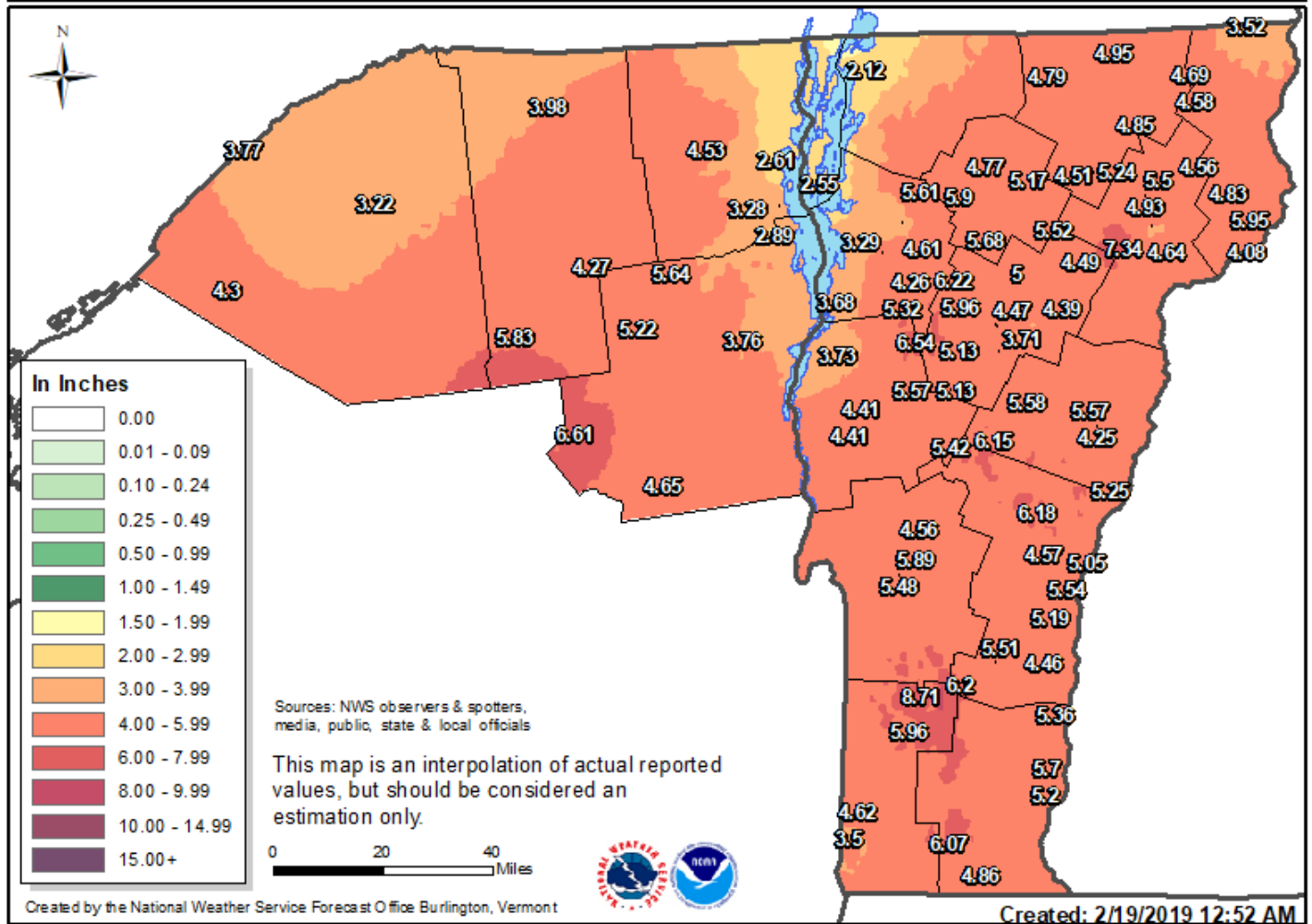


Figure 22: Total liquid Precipitation for the month of April 2019

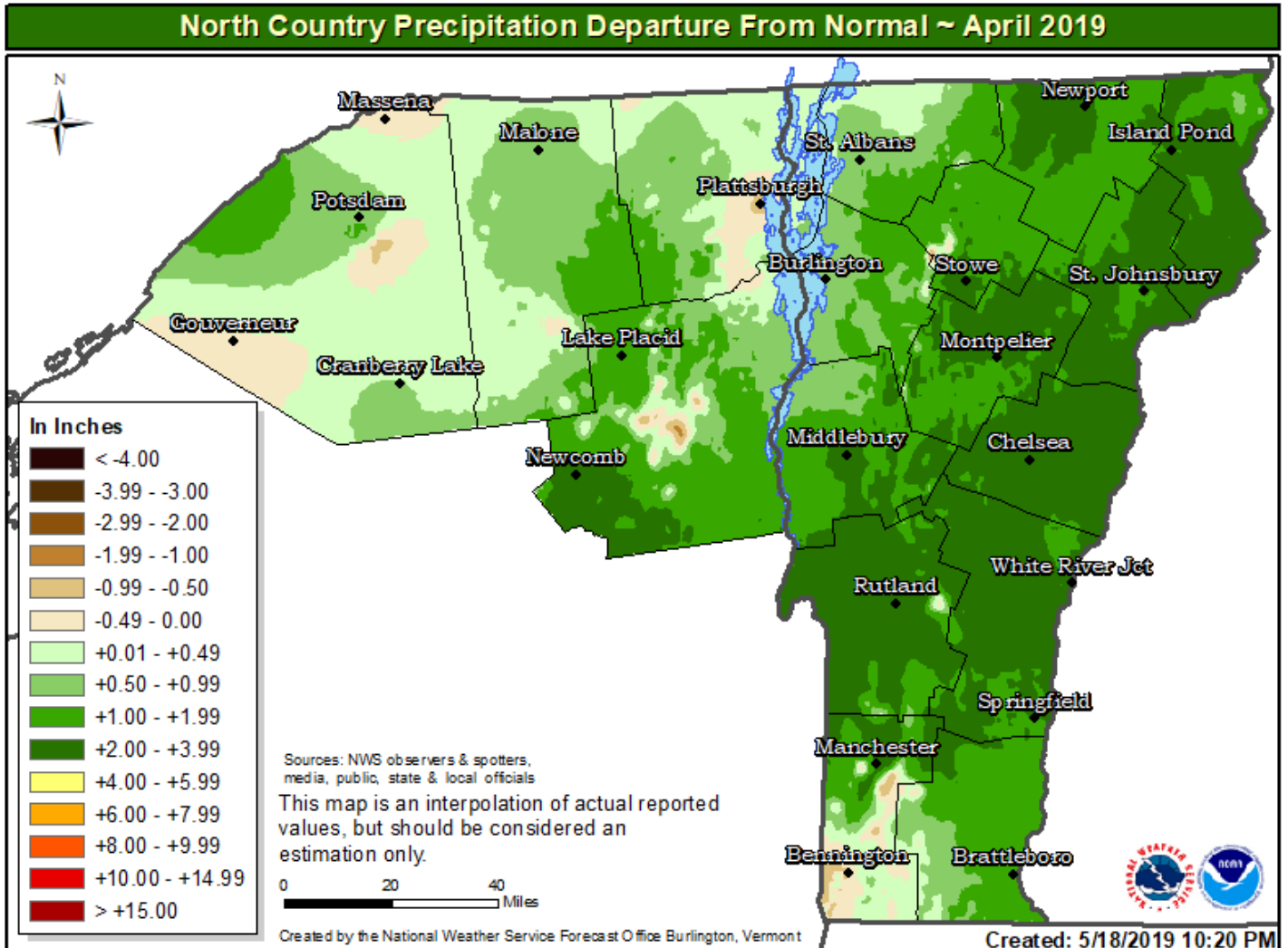


Figure 3: Precipitation departure from normal for the month of April 2019

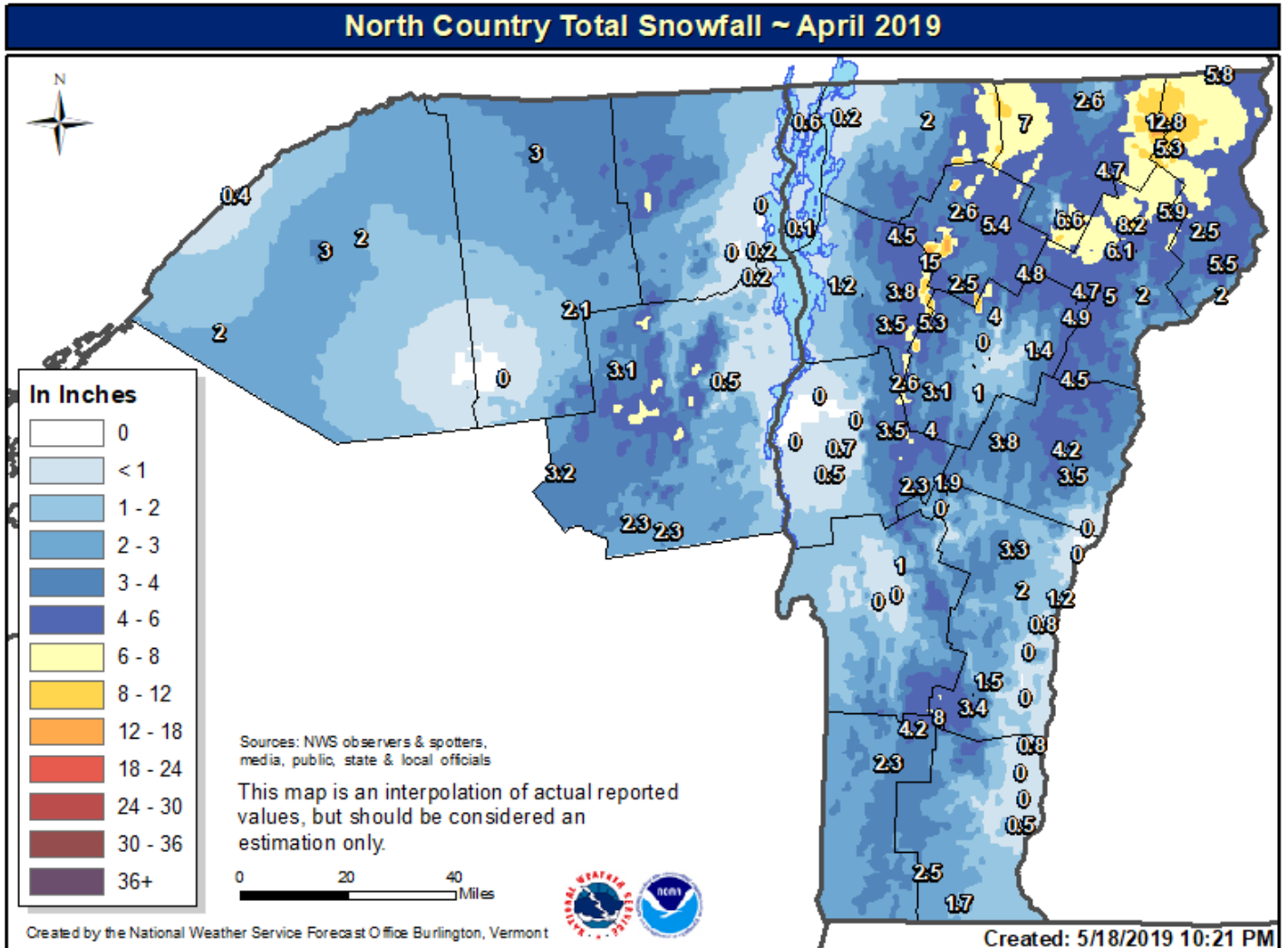


Figure 4: Total snowfall for the month of April 2019

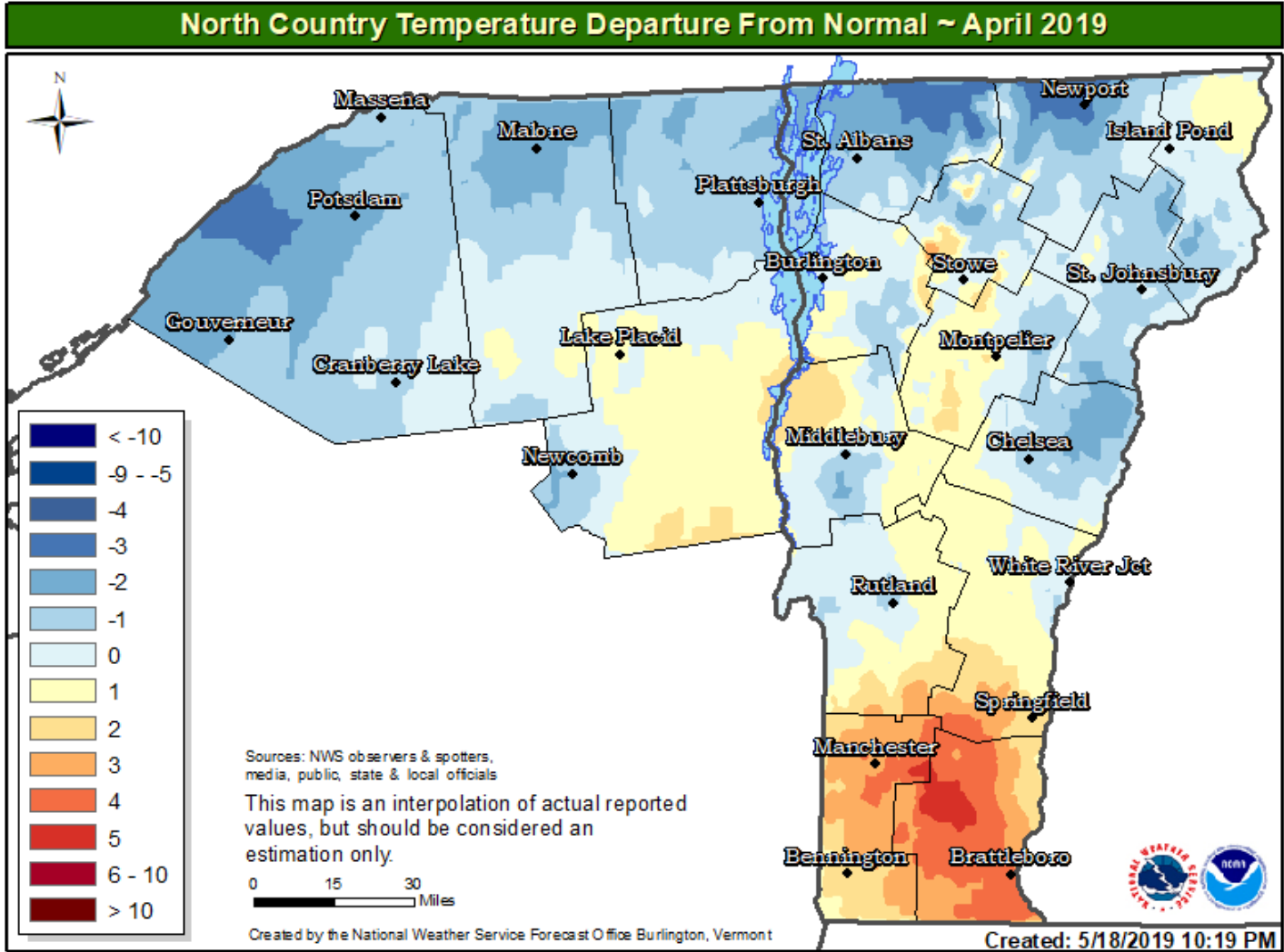


Figure 5: Temperature departure from normal for month of April 2019