

| | | | |
|--|---|---|---|
| NWS Form E-5 (04-2006) (PRES. BY NWS Instruction 10-924) | U.S. DEPARTMENT OF COMMERCE NATIONAL OCEANIC AND ATMOSPHERIC ADMINISTRATION NATIONAL WEATHER SERVICE | HYDROLOGIC SERVICE AREA (HSA) Burlington VT | |
| | | MONTHLY REPORT OF HYDROLOGIC CONDITIONS | REPORT FOR: MONTH YEAR April 2021 |
| TO: Hydrologic Information Center, W/OS31 NOAA's National Weather Service 1325 East West Highway Silver Spring, MD 20910-3283 | | SIGNATURE Jessica Neiles, Lead Meteorologist /s/ | |
| | | DATE 05/29/2021 | |

When no flooding occurs, include miscellaneous river conditions below the small box, such as significant rises, record low stages, ice conditions, snow cover, droughts, and hydrologic products issued (NWS Instruction 10-924).

An X inside this box indicates that no flooding occurred within this hydrologic service area.

The month of April 2021 was overall warmer than normal and had above normal precipitation. There were also a couple late season snowfall events. The monthly precipitation totals (Figure 1) were around two to five inches, highest in the central and southern Green Mountains. Aside from extreme Northern Vermont, this was about half an inch to two inches above normal (Figure 2.) Snowfall totals (Figure 3) ranged from a couple of inches to over a foot of snow in the higher elevations of Northern New York and Vermont. Most of the region was at least two degrees above normal for the month, with some areas exceeding five degrees above normal (Figure 4.) Despite the above normal precipitation, our region still remained in drought at the end of April (Figure 5), with only slight improvements noted. There was no river or areal flooding during the month of April.

There were a couple notable precipitation events. The first was heavy wet snowfall on April 15th and 16th, a widespread long duration light to moderate precipitation event. QPF amounts were influenced by wind direction and terrain with the highest amounts of 1.25-1.75" on the east/southeast upslope areas of the eastern Adirondacks and south central Green Mountains. Other areas generally had 0.50 to 1.25". Rain changed to snow on the summits by 00z on 4/16, with continued cold air advection snow levels dropped to near 1000 ft by 12z on 4/16. Snowfall ranged from nothing in the Champlain and St Lawrence valleys to several inches in the Adirondacks to over a foot across the summits of the central and southern Green Mountains. A sharp and highly elevation dependent snowfall occurred across the region.

The second precipitation event was another late season wet snow event on April 20th into the 21st. Parts of southern Vermont had rain while snow fell across central and northern Vermont, as well as Northern New York. Snowfall totals ranged from around 2-5", with 6-9" across the higher terrain of central and northern Vermont. Snow totals were considerably lower in southern Vermont where the event started with rain.

North Country Total Precipitation ~ April 2021

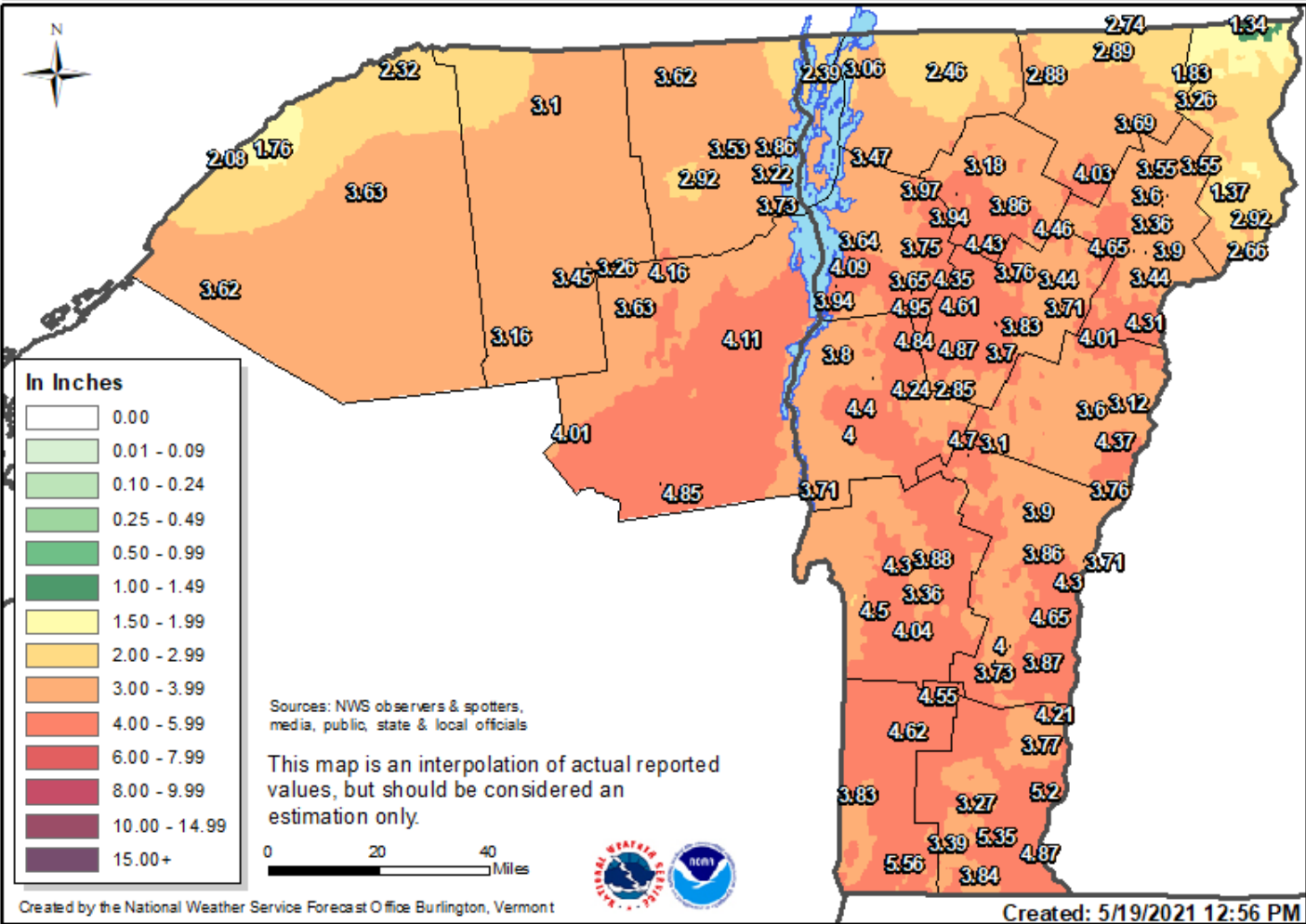


Figure 1: Total Precipitation for April 2021.

North Country Precipitation Departure From Normal ~ April 2021

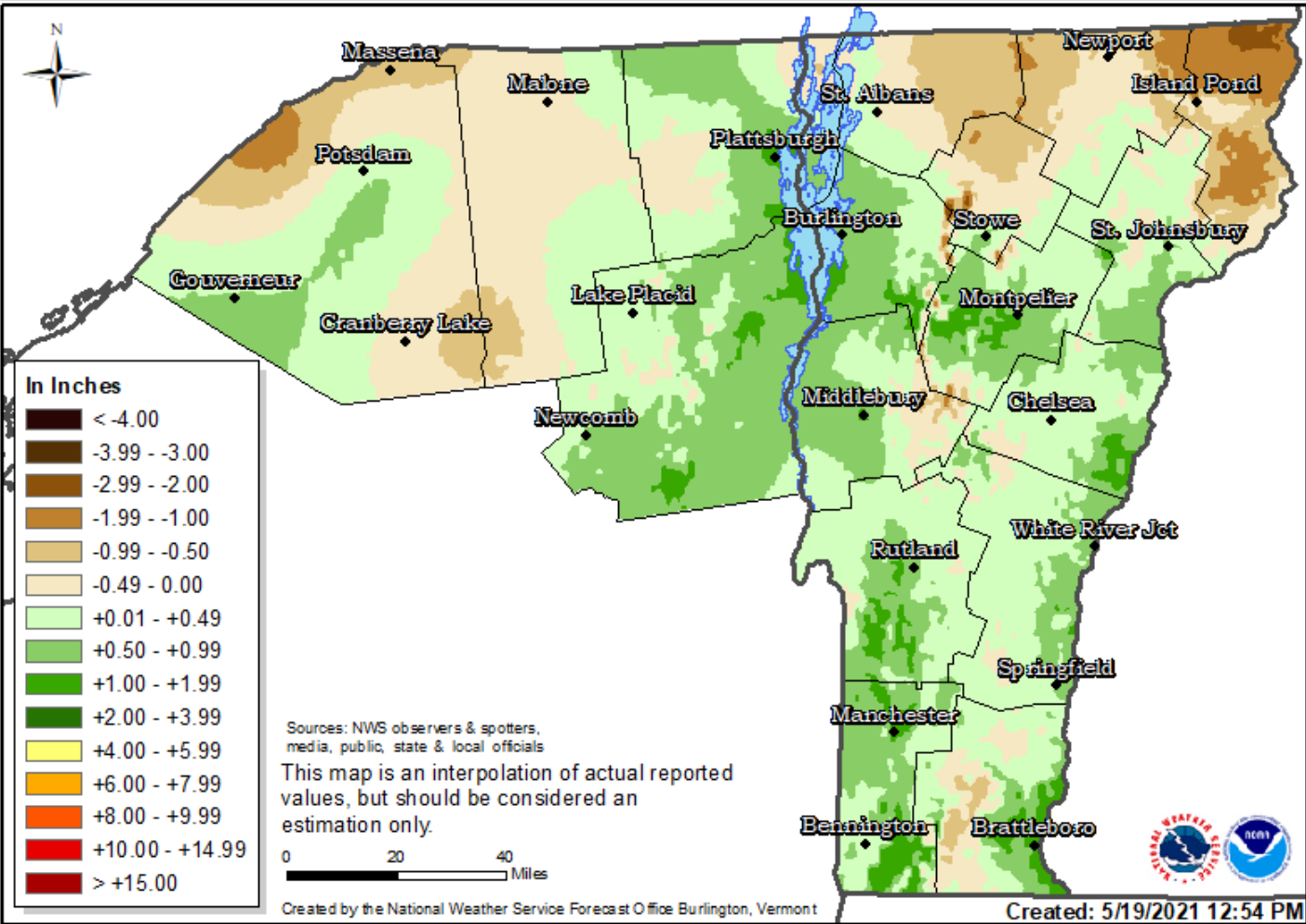


Figure 2: Precipitation Departure from Normal for April 2021.

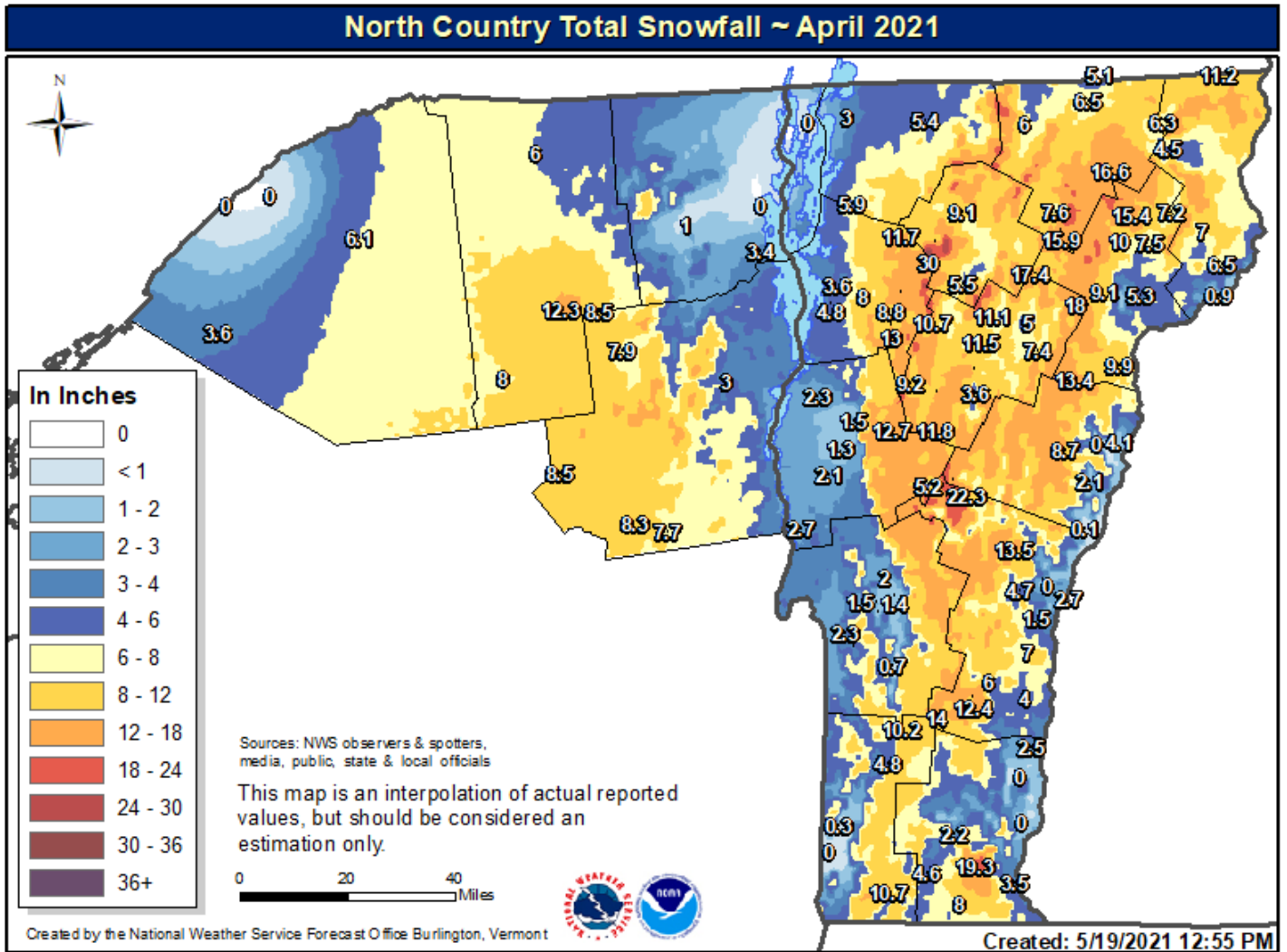


Figure 3: Total Snowfall for April 2021.

North Country Temperature Departure From Normal ~ April 2021

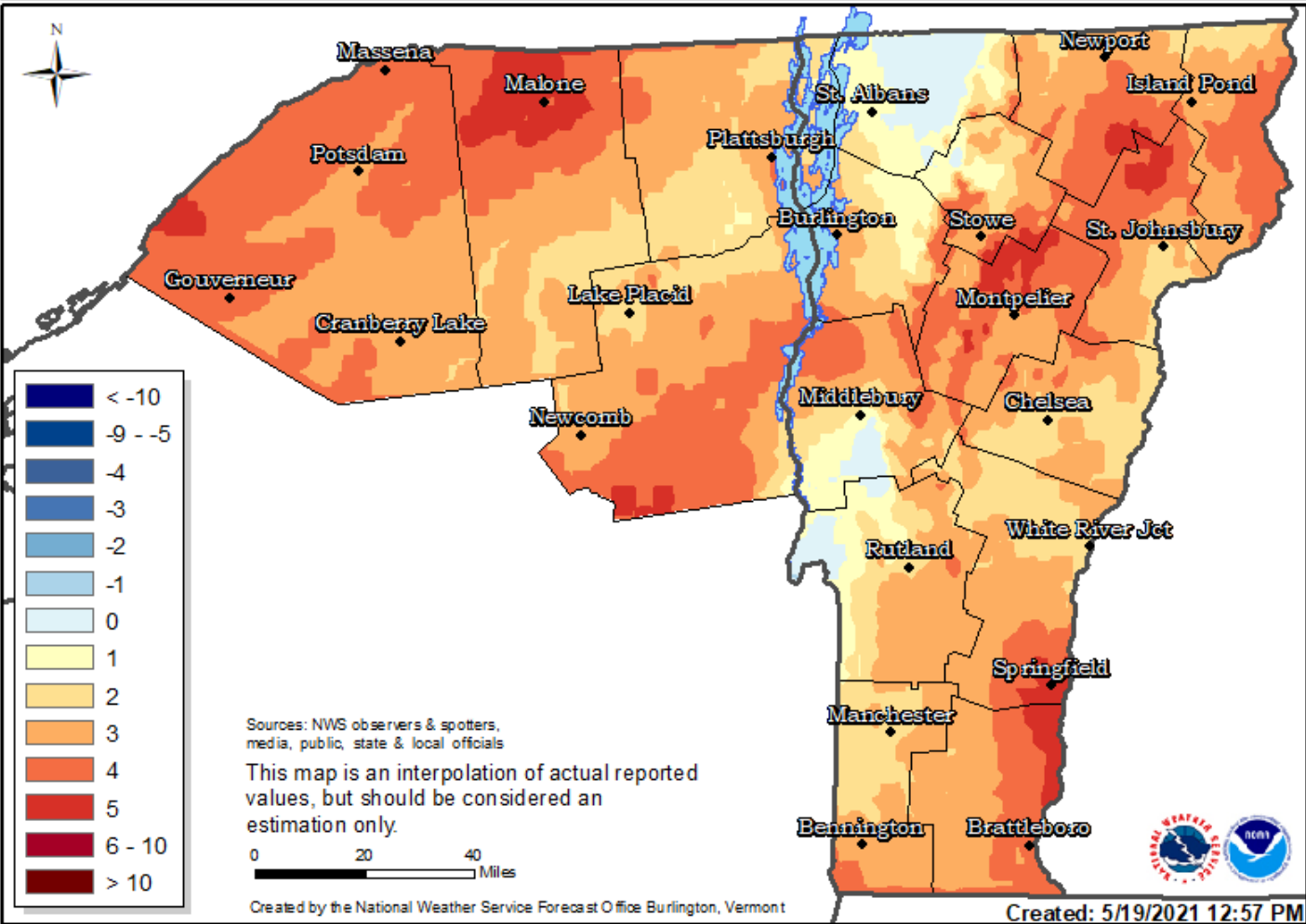
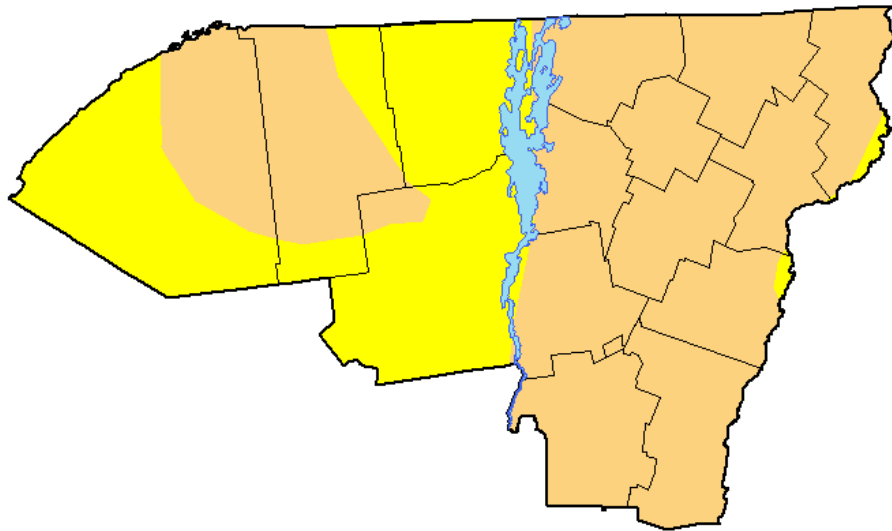








Figure 4: Temperature Departure from Normal for April 2021.

U.S. Drought Monitor Burlington, VT WFO

April 27, 2021
(Released Thursday, Apr. 29, 2021)
Valid 8 a.m. EDT



Intensity:

-  None
-  D0 Abnormally Dry
-  D1 Moderate Drought
-  D2 Severe Drought
-  D3 Extreme Drought
-  D4 Exceptional Drought

The Drought Monitor focuses on broad-scale conditions. Local conditions may vary. For more information on the Drought Monitor, go to <http://droughtmonitor.unl.edu/About.aspx>

Author:

Richard Heim
NCEI/NOAA



droughtmonitor.unl.edu

Figure 5: Drought Monitor on April 27, 2021 showing slight increase in D1.