

NWS Form E-5 (04-2006) (PRES. BY NWS Instruction 10-924)	U.S. DEPARTMENT OF COMMERCE NATIONAL OCEANIC AND ATMOSPHERIC ADMINISTRATION NATIONAL WEATHER SERVICE	HYDROLOGIC SERVICE AREA (HSA) Burlington VT	
		REPORT FOR: MONTH YEAR	March 2022
MONTHLY REPORT OF HYDROLOGIC CONDITIONS		SIGNATURE John Goff, Senior Service Hydrologist	
TO: Hydrologic Information Center, W/OS31 NOAA's National Weather Service 1325 East West Highway Silver Spring, MD 20910-3283		DATE 04/20/2022	

When no flooding occurs, include miscellaneous river conditions below the small box, such as significant rises, record low stages, ice conditions, snow cover, droughts, and hydrologic products issued (NWS Instruction 10-924).

An X inside this box indicates that no flooding occurred within this hydrologic service area.

The month of March 2022 was characterized by a milder than normal weather pattern, with frequent frontal passages bringing period of light to occasionally moderate precipitation to the WFO Burlington HSA. Overall, temperatures averaged 2 to 5 degrees above monthly means, while precipitation was more variable with a drier regime across Vermont and the northern Adirondacks and wetter than normal conditions in the Saint Lawrence Valley (Figures 1 and 2). The more notable events occurred on the March 7-8, 12-13, 19-20 and 24-25. Perhaps the most impactful of these systems affected the region during March 12-13 when a swath of moderate to heavy snowfall of 7 to 16 inches fell across much of Vermont and portions of the Northern Adirondacks (Figure 3). Temperatures gradually trended milder over time through the month, typical of a late winter/early spring regime and with a higher sun angle widespread river ice rotted away by month's end. One flood warning was issued on March 8 for cautionary reasons along portions of the Saranac River upstream of Plattsburgh due to a lingering ice jam in that area. No flooding was observed with this jam, however, and by month's end all river ice had rotted away or had been flushed out. No water supply issues were noted, though some lingering longer term dryness persisted across portions of north central and northeastern Vermont where minimal D0 drought status continued per the USDM (Figure 4).

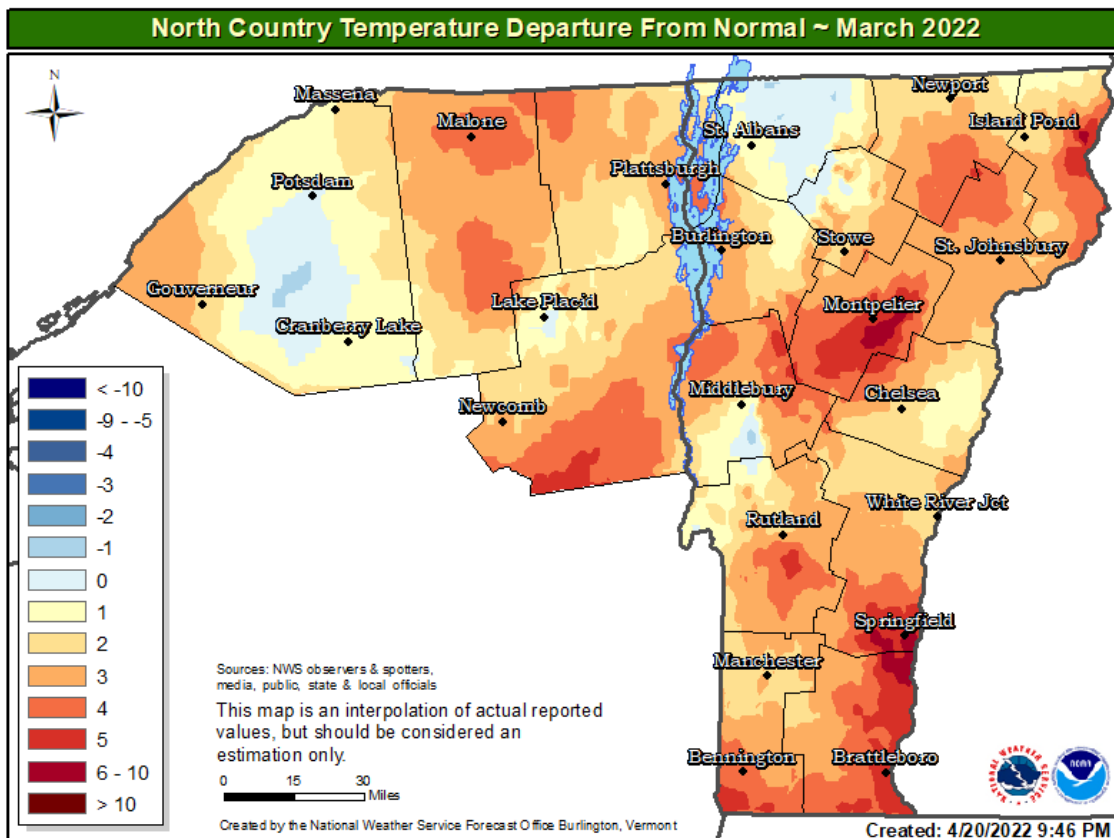


Figure 1: Monthly temperature departures for the month of March 2022 in Vermont and northern New York.

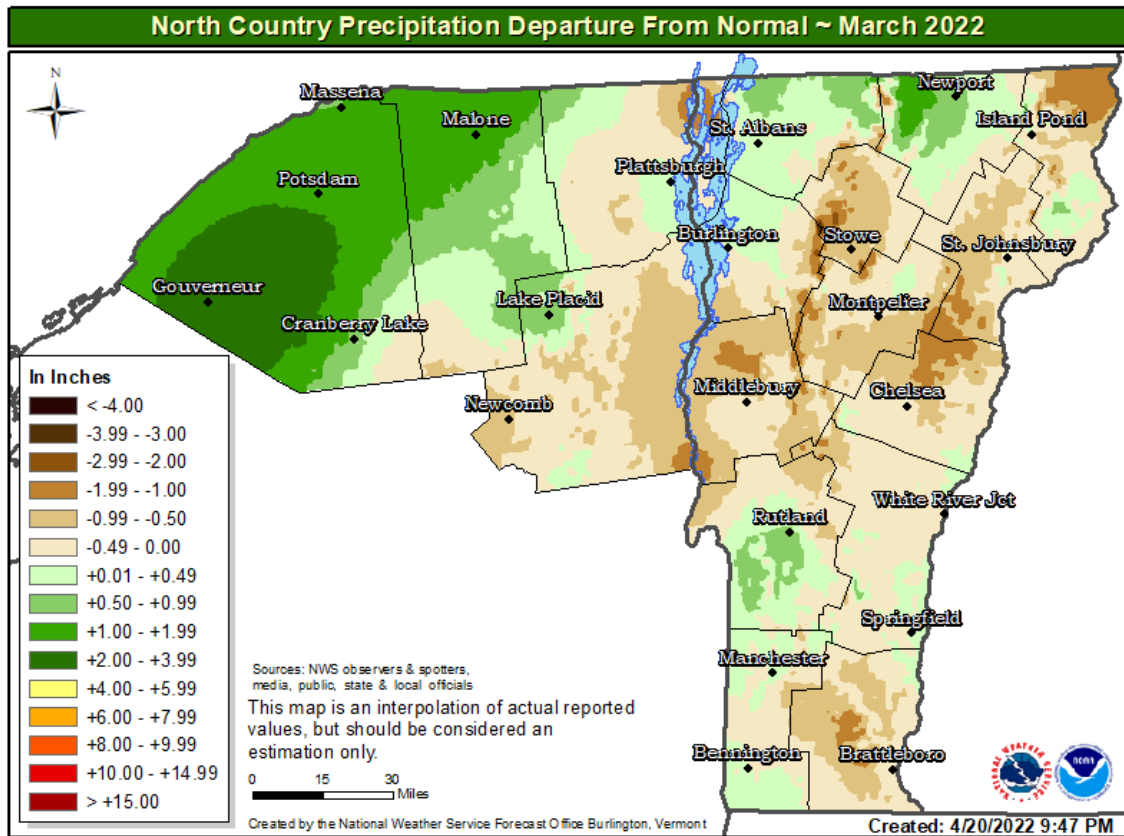


Figure 2: Monthly precipitation departures for the month of March 2022 in Vermont and northern New York

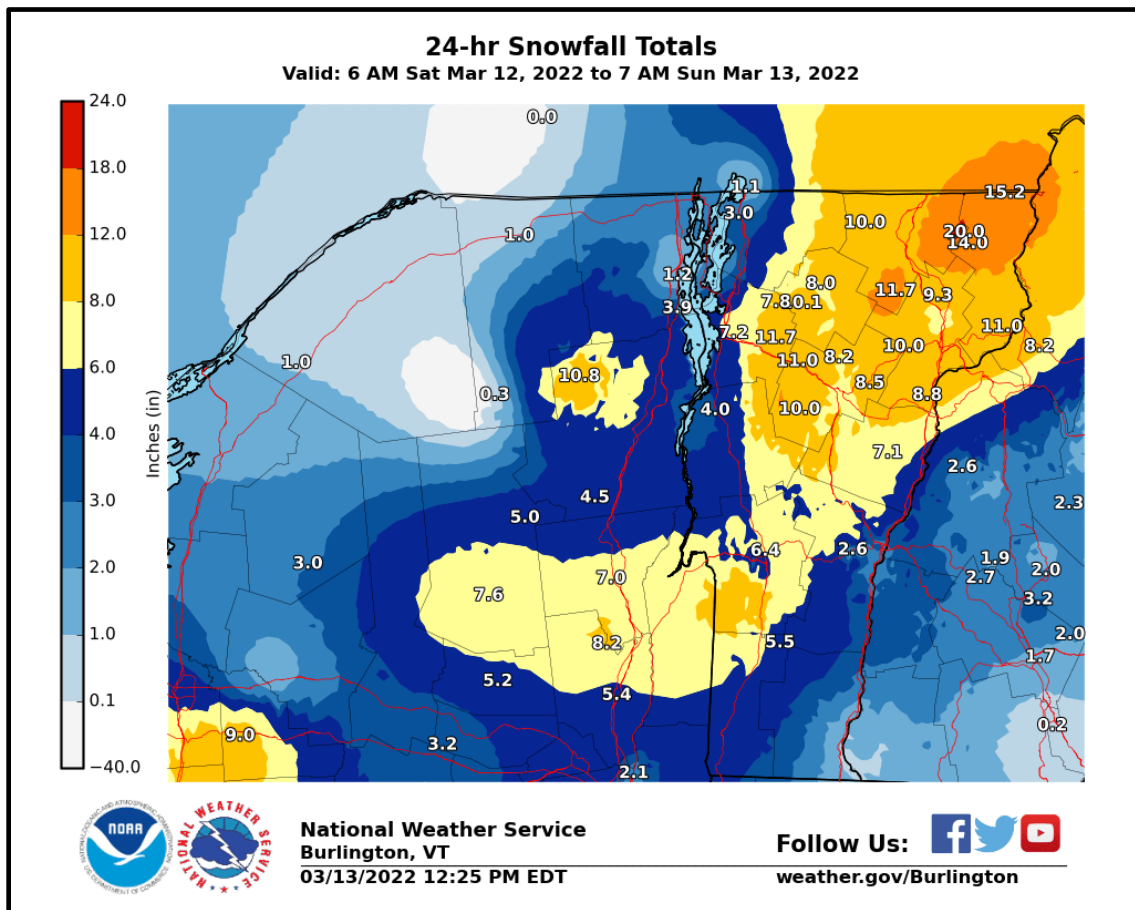


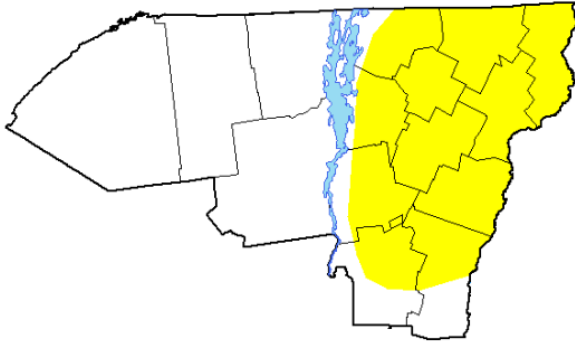
Figure 3: 24-hour snowfall for March 12-13, 2022, ending 700 am March 13, 2022 for Vermont and northern New York.

U.S. Drought Monitor Burlington, VT WFO

March 22, 2022
(Released Thursday, Mar. 24, 2022)
Valid 8 a.m. EDT

Drought Conditions (Percent Area)

	None	D0-D4	D1-D4	D2-D4	D3-D4	D4
Current	58.29	41.71	0.00	0.00	0.00	0.00
Last Week 03-15-2022	58.29	41.71	0.00	0.00	0.00	0.00
3 Months Ago 12-21-2021	84.35	15.65	0.00	0.00	0.00	0.00
Start of Calendar Year 01-04-2022	84.35	15.65	0.00	0.00	0.00	0.00
Start of Water Year 09-28-2021	60.85	39.15	6.69	0.00	0.00	0.00
One Year Ago 03-23-2021	0.00	100.00	46.00	0.00	0.00	0.00



Intensity

- None
- D0 Abnormally Dry
- D1 Moderate Drought
- D2 Severe Drought
- D3 Extreme Drought
- D4 Exceptional Drought

The Drought Monitor focuses on broad-scale conditions. Local conditions may vary. For more information on the Drought Monitor, go to <https://droughtmonitor.unl.edu/About.aspx>

Author

Adam Hartman
NOAA/NWS/NCEP/CPC



droughtmonitor.unl.edu

Figure 4: U.S. Drought Monitor map for the week of March 22, 2022 showing linger D0 drought status (abnormally dry) for much of north central and northeastern Vermont.