

NWS Form E-5 (04-2006) (PRES. BY NWS Instruction 10-924)		U.S. DEPARTMENT OF COMMERCE NATIONAL OCEANIC AND ATMOSPHERIC ADMINISTRATION NATIONAL WEATHER SERVICE		HYDROLOGIC SERVICE AREA (HSA) Burlington VT
MONTHLY REPORT OF HYDROLOGIC CONDITIONS				REPORT FOR: MONTH August
				YEAR 2022
TO: Hydrologic Information Center, W/OS31 NOAA's National Weather Service 1325 East West Highway Silver Spring, MD 20910-3283				SIGNATURE /s/ John Goff, Senior Service Hydrologist
				DATE September 12, 2022

When no flooding occurs, include miscellaneous river conditions below the small box, such as significant rises, record low stages, ice conditions, snow cover, droughts, and hydrologic products issued (NWS Instruction 10-924).

An X inside this box indicates that no flooding occurred within this hydrologic service area.

August 2022 continued trends from prior summer months of 2022 of exhibiting overall dryness with only scattered, mainly light to moderate precipitation observed (Table 1). Rainfall was frequent enough to prevent any large scale agricultural or ground water impacts other than some localized pasturing issues in select southern Vermont locations. However, given a higher degree of negative departures across Vermont and eastern New York (Figure 2), a general expansion of D0 (abnormally dry) and D1 (moderate drought) conditions occurred by month's end (Figure 3). A few exceptions were noted, especially across the southern portions of Rutland and Windsor Counties where localized wetness was more pronounced. Additionally, a band of scattered, locally heavy rainfall impacted the eastern portions of Essex and Clinton Counties in New York on the afternoon of August 23 as a cold front slowly moved across the area (Figure 2).

Observation site	August precipitation total (in.)	August precipitation departure (in.)
Burlington, VT (KBTV)	3.40	+0.14
Montpelier, VT (KMPV)	2.24	-1.57
Morrisville, VT (KMVL)	1.69	-1.81
St. Johnsbury, VT (K1V4)	M	M
Springfield, VT (KVSF)	6.36	+2.80
Plattsburgh, NY (KPBG)	2.57	-1.01
Saranac Lake, NY (KSLK)	4.26	+0.70
Massena, NY (KMSS)	1.35	-2.01

Table 1: August 2022 precipitation totals and departures (in inches) for selected NWS ASOS platforms in the NWS Burlington HSA.

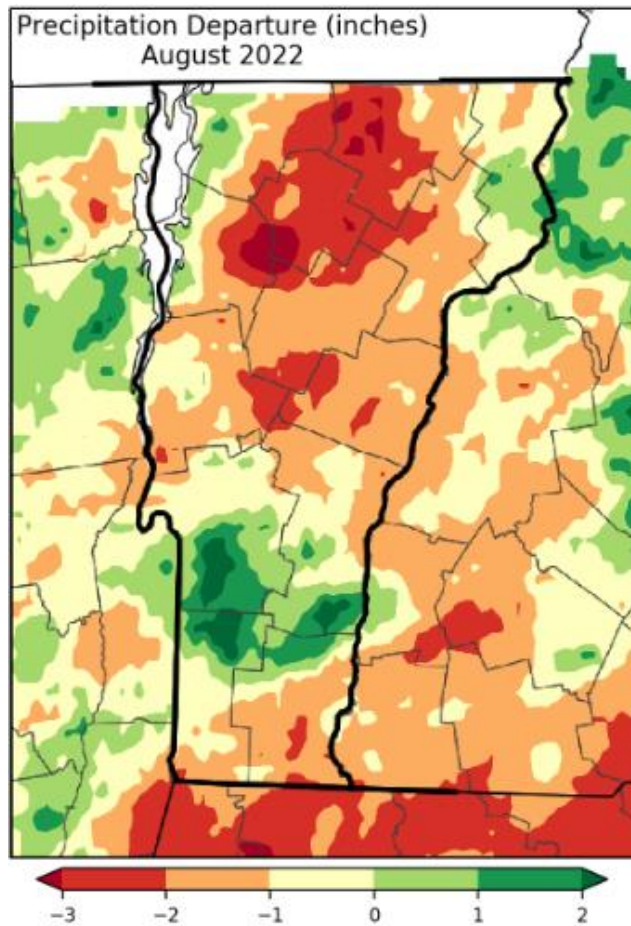


Figure 1: August 2022 precipitation departures for Vermont and eastern New York in NWS Burlington’s HSA. Departures, on average, were drier than normal, especially across central and north central VT. This led to a gradual expansion of abnormally dry (D0) and moderate drought (D1) conditions across the area by month’s end.

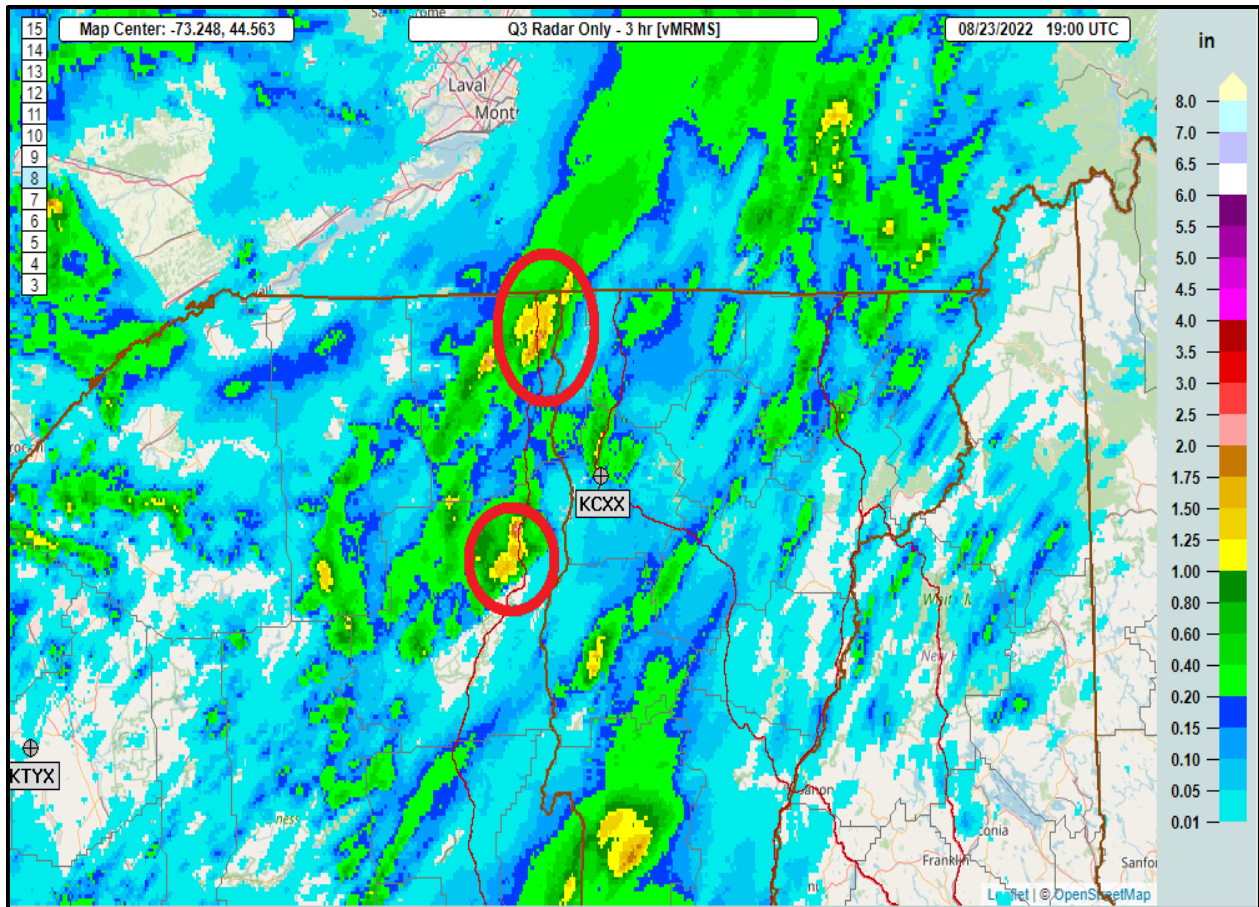


Figure 2: MRMS Q3 3-hour rainfall ending at 3:00 PM local time on August 23, 2022. Note the areas of heavier rainfall across the eastern portions of Essex and Clinton Counties in eastern New York (red circles). While no flooding was reported, these areas received between 1.5 to 2.5 inches of rain during the period.

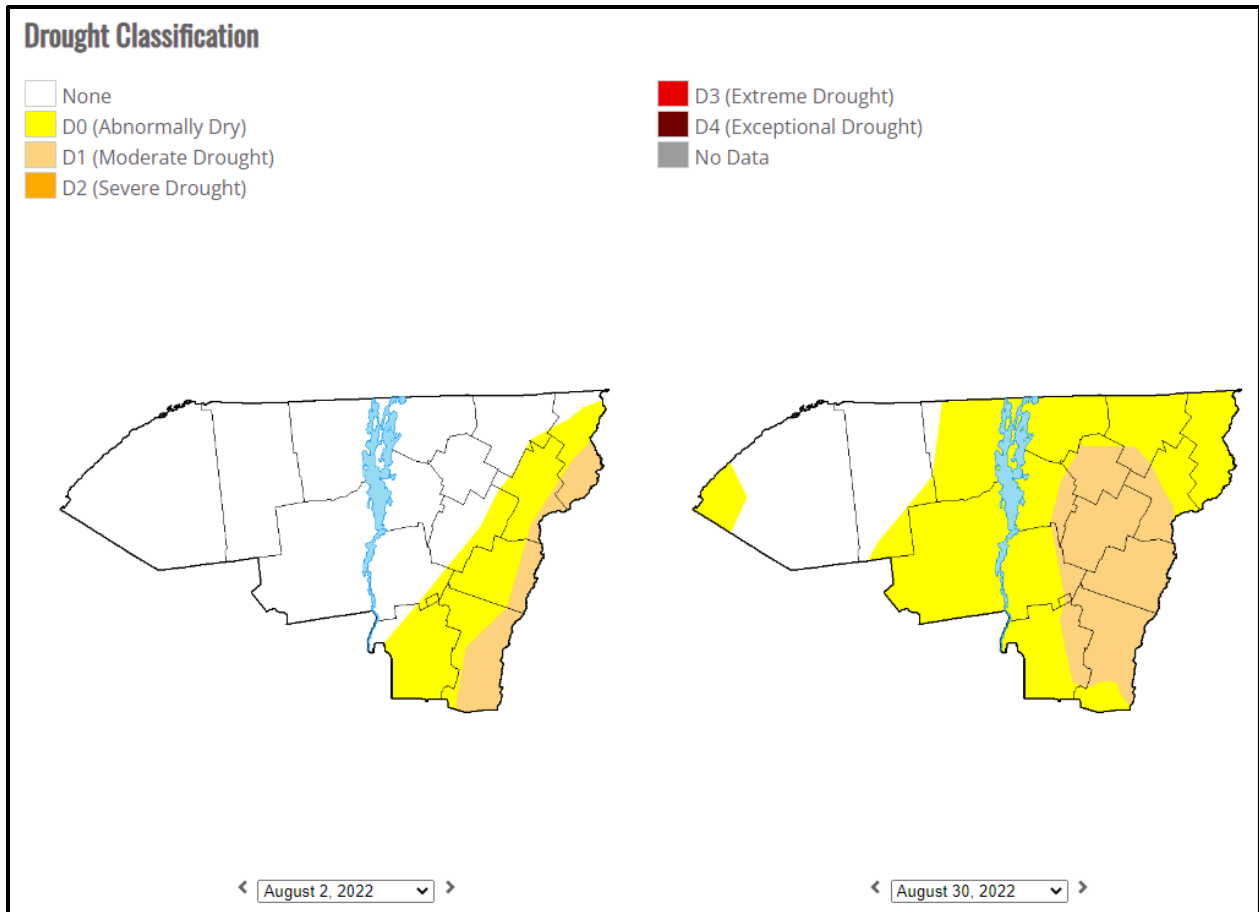


Figure 3: U.S. Drought Monitor maps from August 2, 2022, and August 30, 2022, showing changes in longer-term dryness across the NWS Burlington, VT HSA. A general expansion of D0 (abnormally dry) and D1 (moderate drought) conditions occurred, mainly due to longer term rainfall deficits, and lower than normal streamflows and groundwater levels.