

Figure 1: February 2025 monthly precipitation across the NWS Burlington, VT HSA. On average, amounts between 1.5 to 5.0 inches were observed. Highest totals occurred across the higher elevations, while the lower amounts occurred in the valleys.

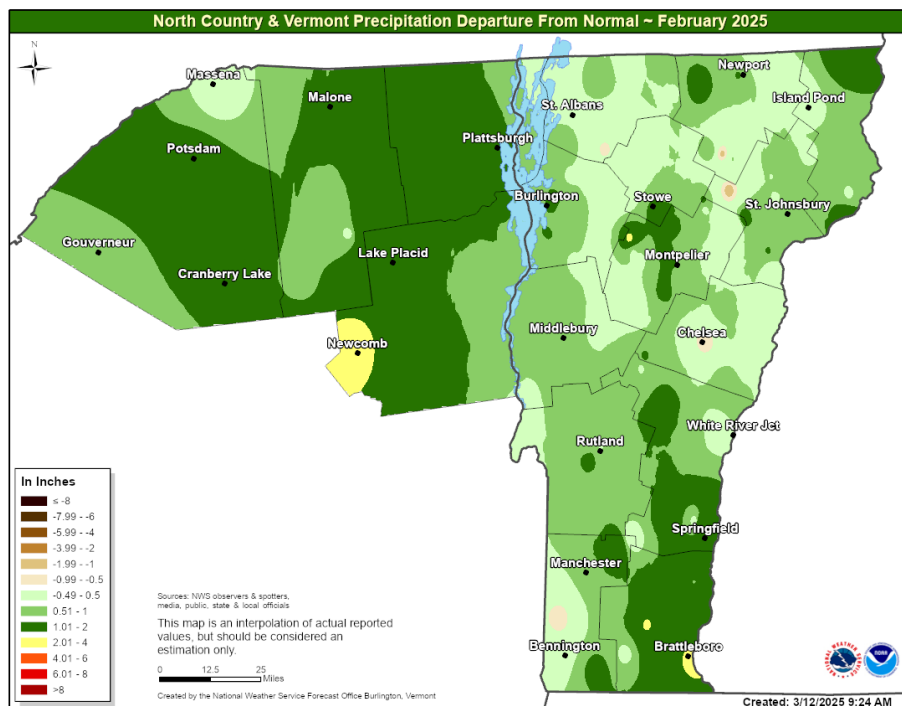


Figure 2: February 2025 monthly precipitation departures from normal across the NWS Burlington, VT HSA. On average, positive precipitation departures of 0.5 to 2.0 inches occurred across the area, with the values seen across northern New York.

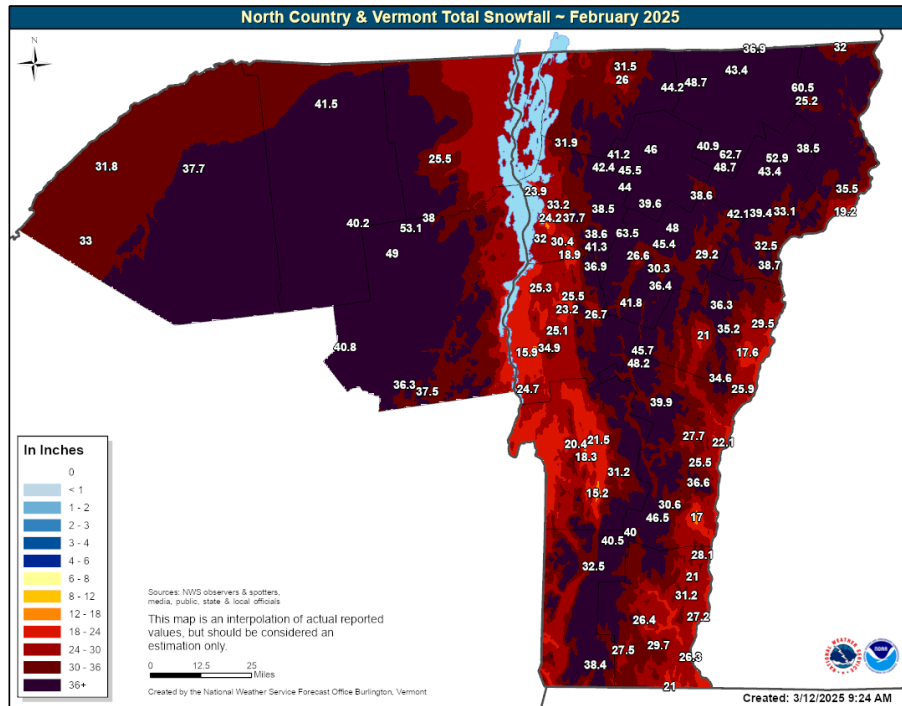


Figure 3: February 2025 total snowfall across the NWS Burlington, VT HSA. On average, amounts between 18 to 60 inches were observed, with the greatest amounts across the Adirondacks and northern Green Mountains.

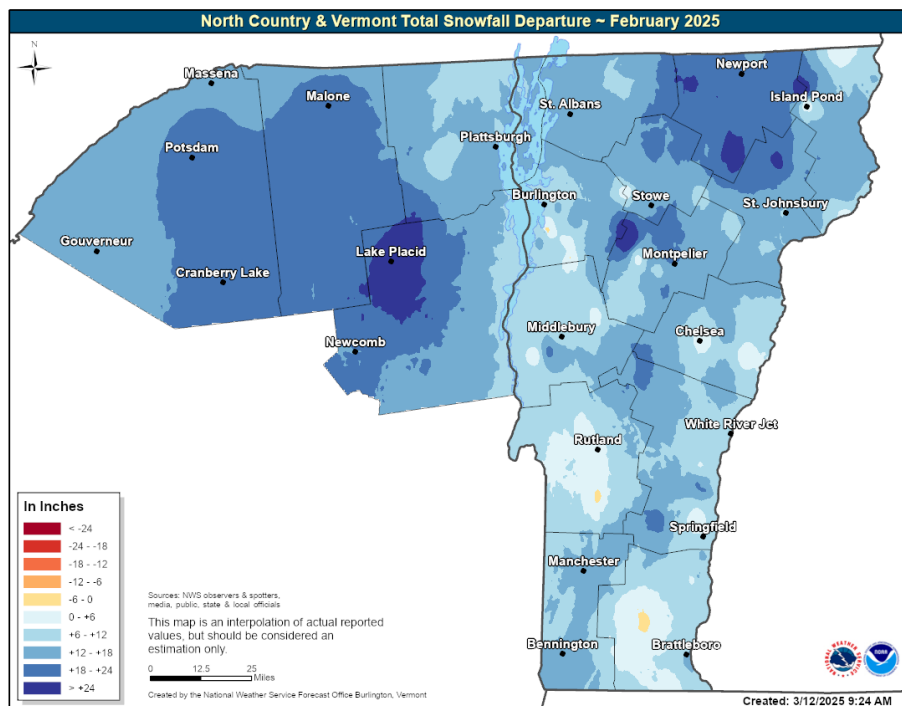


Figure 4: February 2025 snowfall departure from normal across the NWS Burlington, VT HSA. Most locations saw near to well above normal snowfall, with many locations seeing 12+ inches above normal.

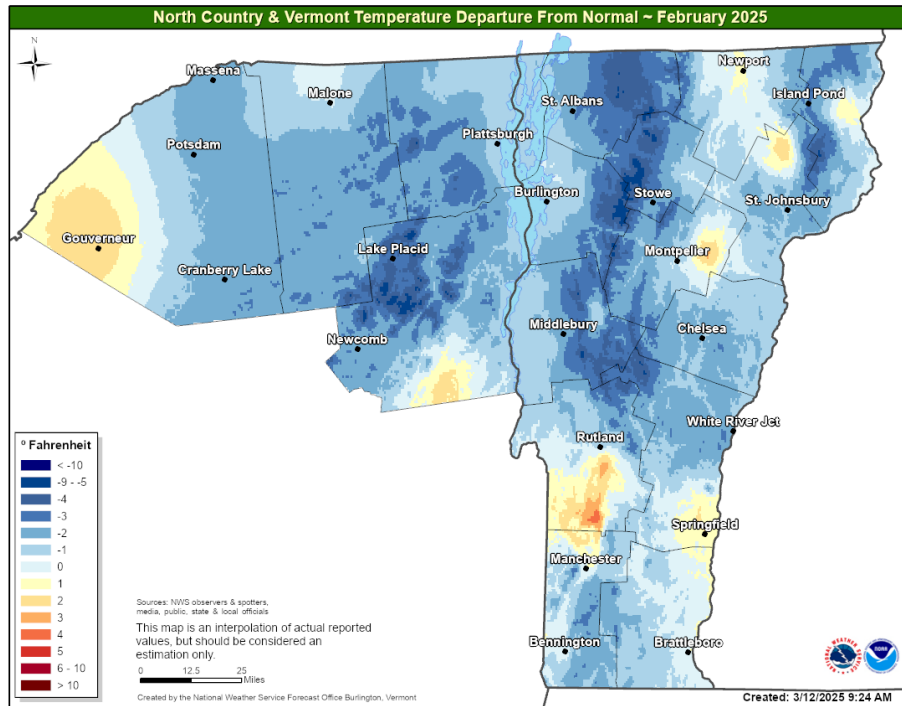


Figure 5: February 2025 temperature departure from normal across the NWS Burlington, VT HSA. It was a relatively cold month with most locations observing temperatures near or below normal.

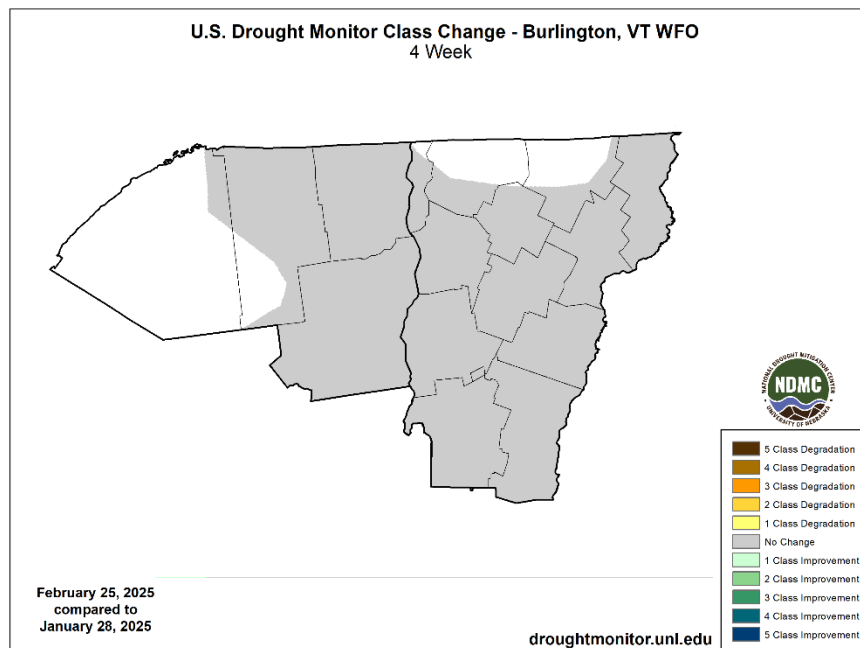


Figure 6: U.S Drought Monitor 4-week Class Change across the NWS Burlington, VT HSA. No change was observed in the D0 and D1 conditions across the region.

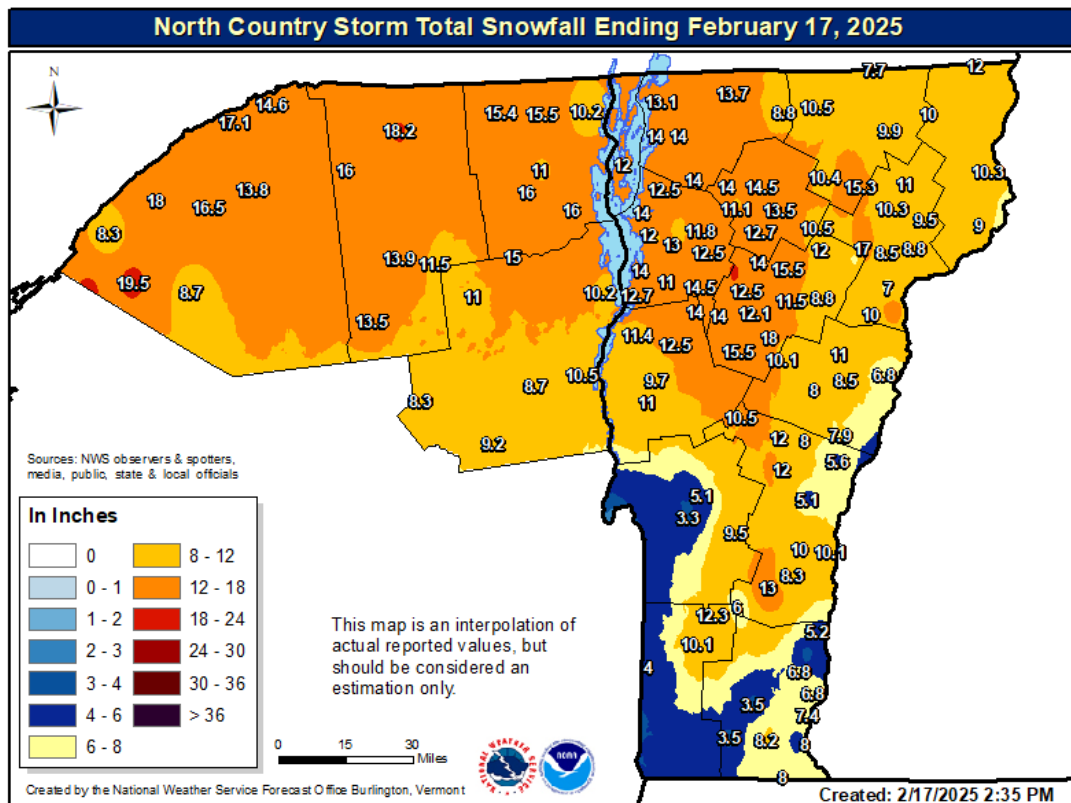


Figure 7: Snowfall totals across the NWS Burlington, VT HSA from February 15th and 16th snowfall event. Many locations received over a foot of snow, with locally higher amounts across northern New York.