

<b>NWS Form E-5</b> (04-2006) (PRES. BY NWS Instruction 10-924)	<b>U.S. DEPARTMENT OF COMMERCE</b> <b>NATIONAL OCEANIC AND ATMOSPHERIC ADMINISTRATION</b> <b>NATIONAL WEATHER SERVICE</b>	HYDROLOGIC SERVICE AREA (HSA) Burlington VT	
<b>MONTHLY REPORT OF HYDROLOGIC CONDITIONS</b>		REPORT FOR: MONTH	YEAR 2025
		April	2025
TO: Hydrologic Information Center, W/OS31 NOAA's National Weather Service 1325 East West Highway Silver Spring, MD 20910-3283		SIGNATURE Jessica Storm / Meteorologist	
		DATE May 23, 2025	

*When no flooding occurs, include miscellaneous river conditions below the small box, such as significant rises, record low stages, ice conditions, snow cover, droughts, and hydrologic products issued (NWS Instruction 10-924).*

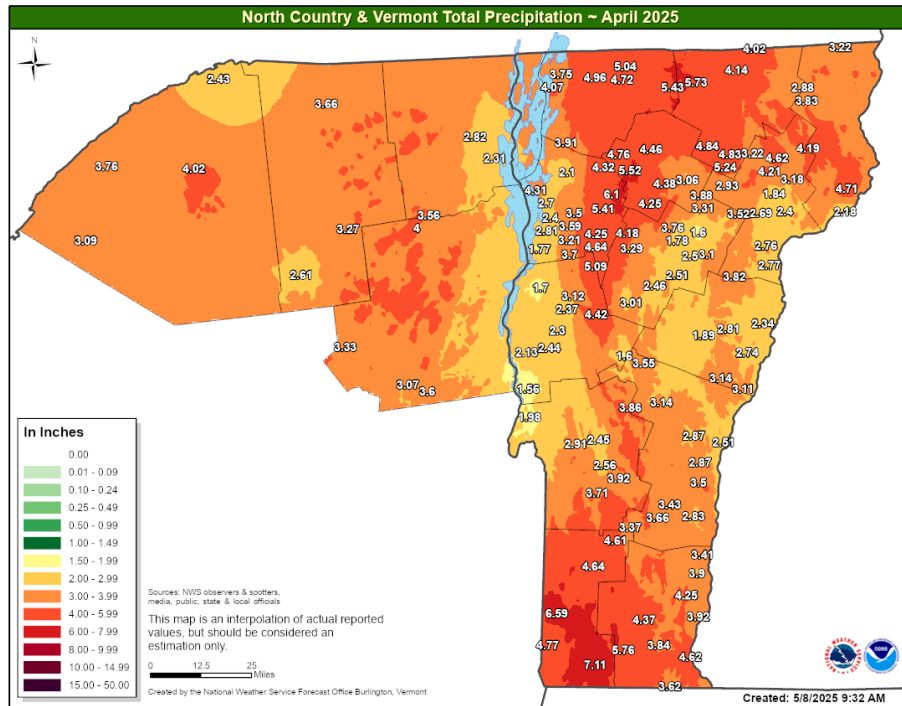
☒ An X inside this box indicates that no flooding occurred within this hydrologic service area.

## Overview

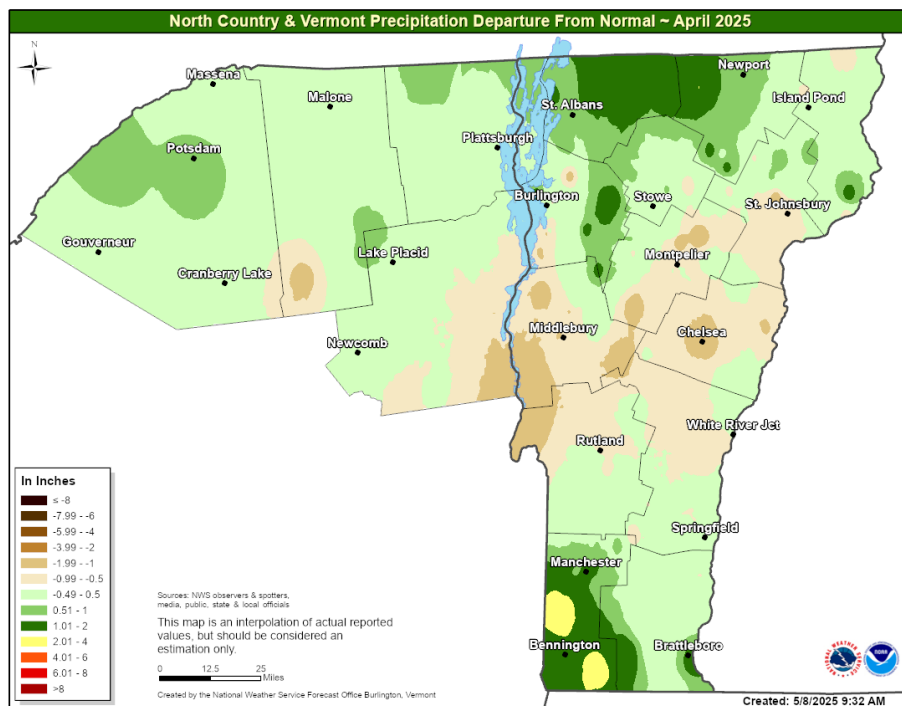
Overall, April 2025 was a fairly typical month across the NWS Burlington hydrologic service area (HSA). Near to slightly above normal precipitation was observed with the exception of the central Champlain Valley and central Vermont. The weather pattern continued to remain active, though most lower elevation sites received mostly rain with rain and snow falling at higher elevations. Monthly precipitation totals generally ranged from 1.5 to 4.0 inches in the Champlain Valley and central Vermont with 3.5 to 6.5 inches falling elsewhere (Fig. 1). This resulted in mostly near normal precipitation with northern and southern regions receiving up to 4 inches above normal and central areas reporting about an inch below normal. (Fig. 2). Snowfall specifically was on the leaner side again this month with 2 to 6 inches in lower elevation terrain and up to 8 to 18 inches at higher elevations (Fig. 3). This is displayed in the monthly snowfall departure from normal map with most locations reporting widespread up to 6 inches below normal (Fig. 4). However, the overall above normal precipitation, particularly in southern areas, resulted in another noticeable improvement in abnormally dry conditions across the NWS Burlington HSA this past April (Fig. 5).

## Notable Hydrology

There was no notable hydrology worthy of discussion during April.



**Figure 1: April 2025 monthly precipitation across the NWS Burlington, VT HSA. On average, amounts range from 1.5 to 4.0 inches in the Champlain Valley and central Vermont and 3.5 to 6.5 inches mostly elsewhere.**



**Figure 2: April 2025 monthly precipitation departure from normal across the NWS Burlington, VT HSA. Most areas reported near normal precipitation with northern and southern Vermont as well as the northern Green Mountains reporting up to 4 inches above normal and central Champlain Valley through central Vermont reporting as low as 1 inch below normal.**

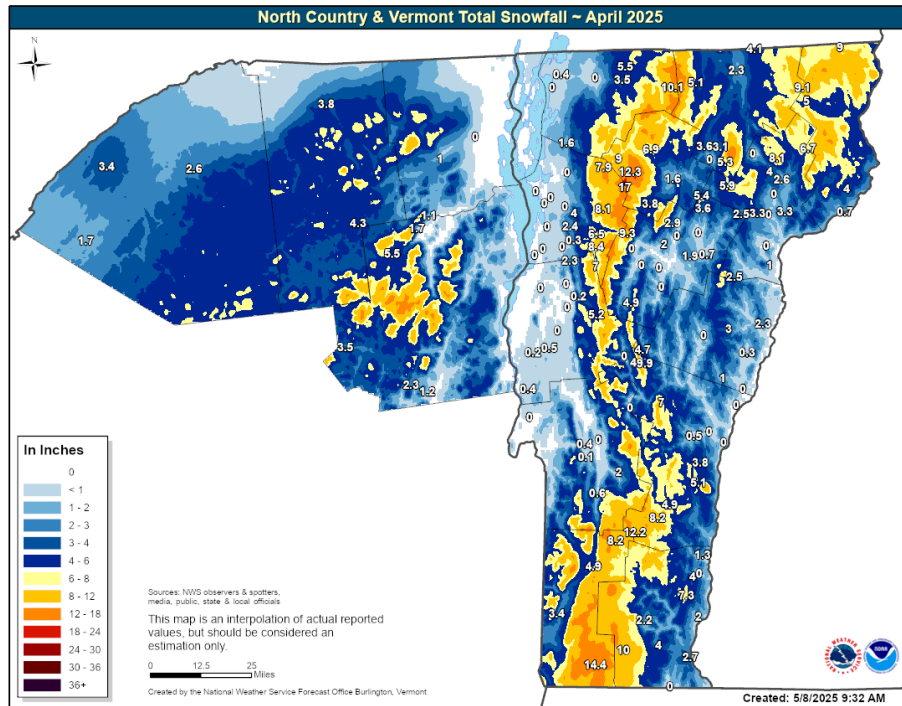


Figure 3: April 2025 monthly snowfall across the NWS Burlington, VT HSA. On average, amounts range from 2 to 6 inches in lower elevation terrain and up to 8 to 18 inches mostly at highest elevation.

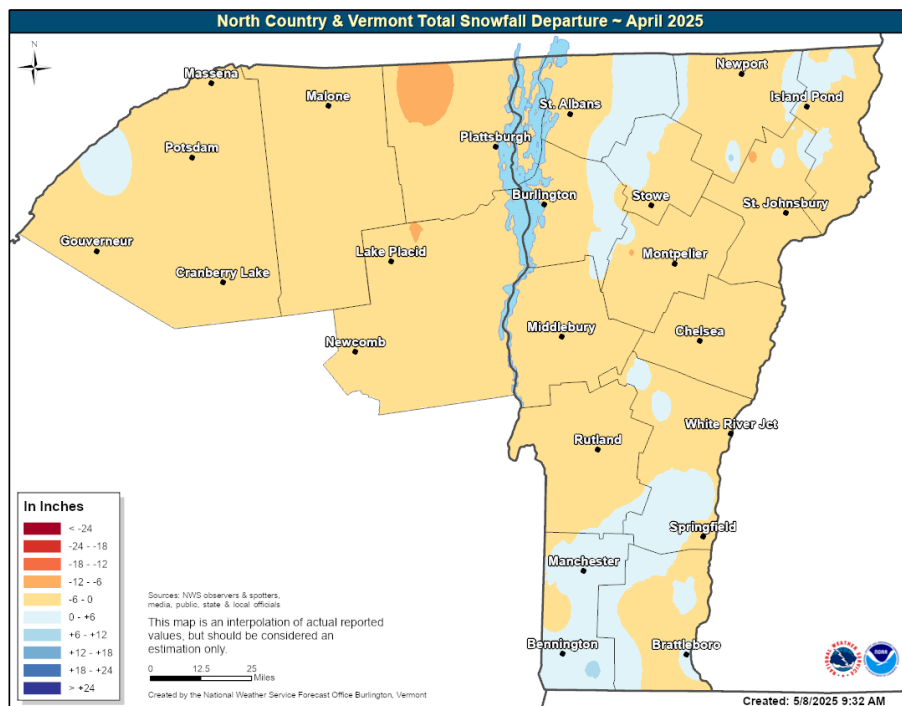
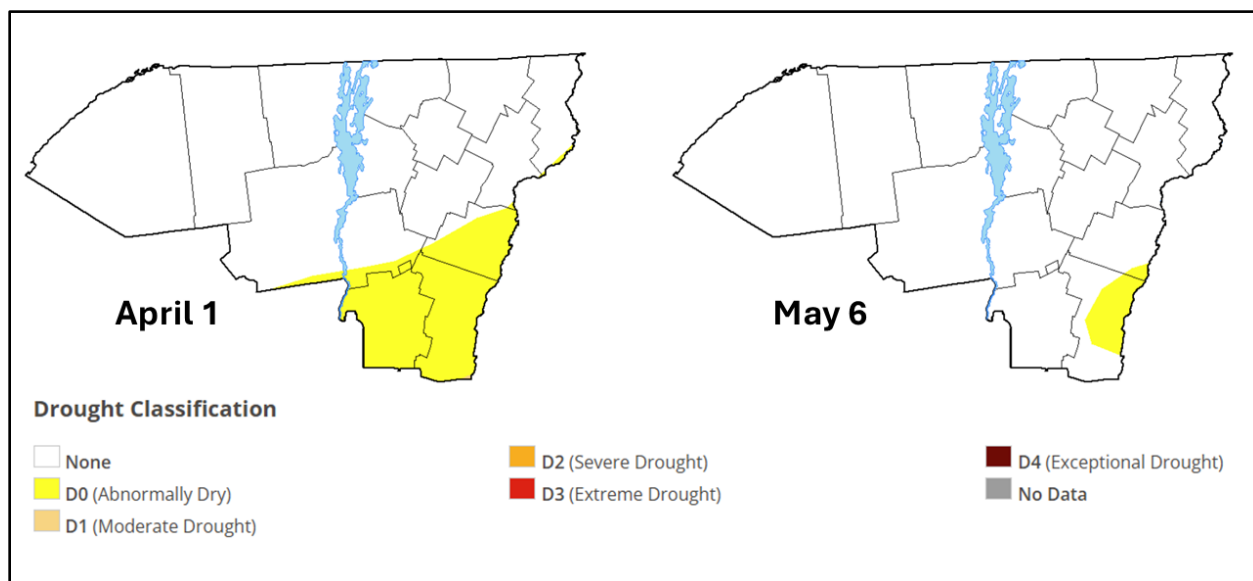


Figure 3: April 2025 monthly snowfall departure from normal across the NWS Burlington, VT HSA. Most locations saw below normal values with a fairly widespread area of up to 6 inches below normal reported.



**Figure 4: U.S Drought Monitor 4-week change from April 1 to May 6, 2025. Drought conditions continue to improve across southern Vermont due to above normal monthly precipitation reported in that area.**