

Carter County Tornado

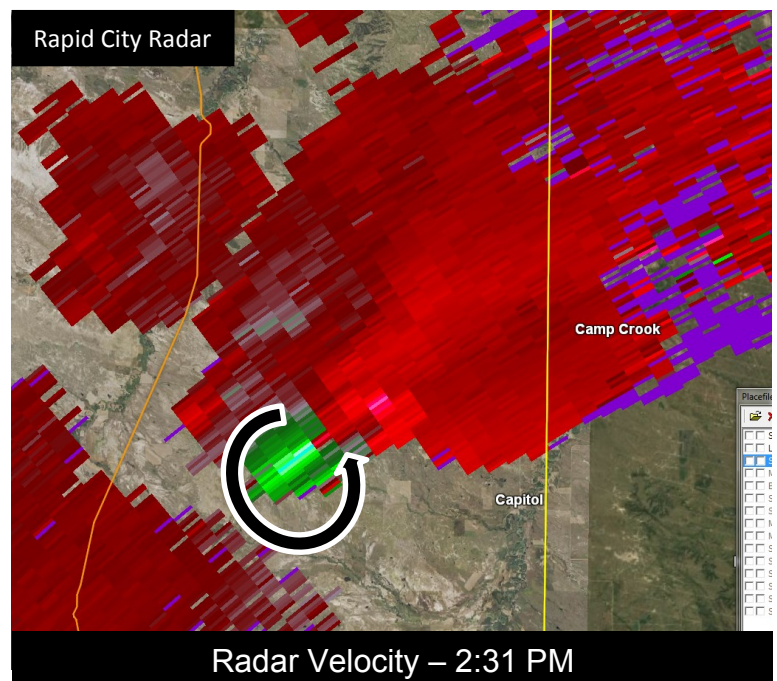
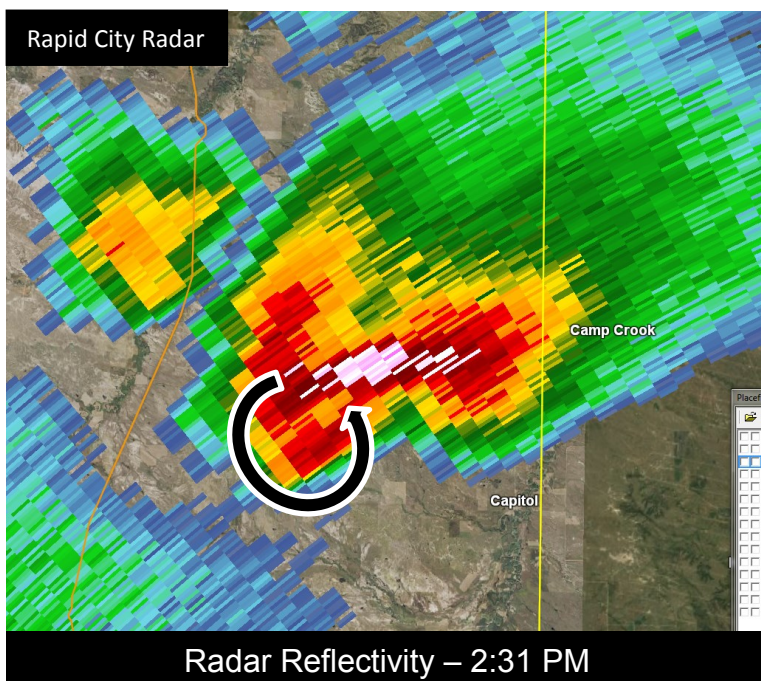
06/17/2014

A supercell thunderstorm developed very quickly in eastern Carter County around 2:15 pm on June 17, 2014. This thunderstorm (pictured on the right) produced the first ever EF-3 rated tornado in southern Montana! The tornado first touched down at 2:27 pm around 13 miles southwest of Camp Crook, South Dakota, or around 10 miles west of Capitol, MT. The tornado formed in the Sheep Mountains and eventually crossed Tie Creek Road as it moved slowly north. People lost sight of the tornado as it entered Custer National Forest around 3:30 pm.

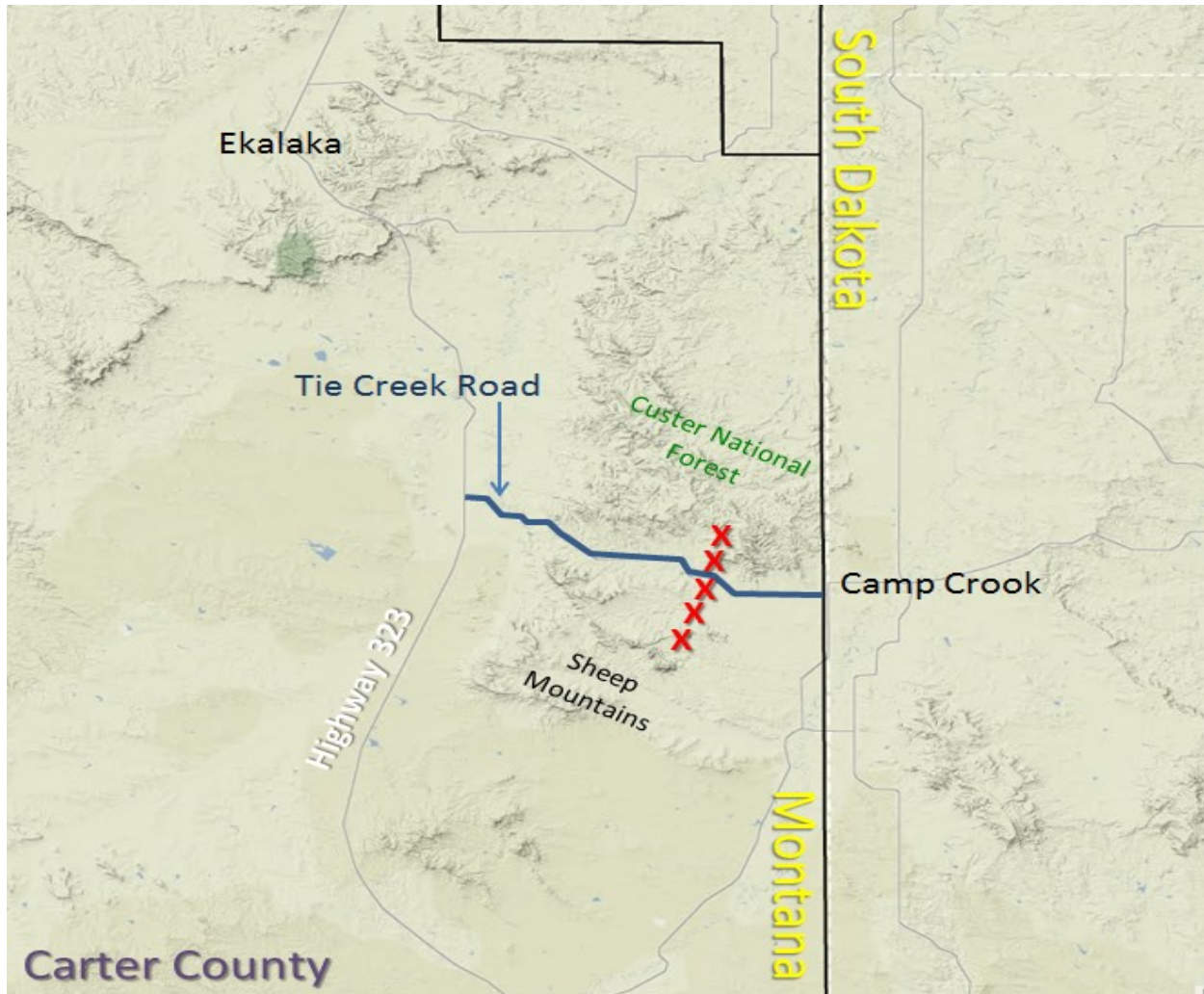


Picture courtesy of Meagan Reedy

Imagery from the Rapid City radar (shown below) showed strong mid-level rotation in the supercell thunderstorm over eastern Carter County. The tornado was on the ground for an hour and traveled 10 miles, and was reported to be a half mile wide at times.



Numerous reports of the tornado came from trained spotters, Forest Service employees and the public. The tornado first touched down over the Sheep Mountains southwest of Camp Crook. The tornado moved slowly northeast and crossed Tie Creek Road where most of the damage (pictures below) occurred. Spotters lost sight of the tornado as it entered the Custer National Forest. The tornado track can be seen in the image below.



The tornado completely destroyed a trailer home (Image A), twisting and throwing debris over a mile. A small and old A-frame school house was completely destroyed (Image B), with debris blown 100 yards away, leaving only the basement behind. Six vehicles were picked up and tossed up to 200 yards (Image C). Around 20 power poles were snapped off with



one pulled up out of the ground (Image D). Twenty hay bales, weighing 3/4 ton a piece, were blown so far away that they have not been recovered.

No injuries were reported, but 2 horses were killed and owners were still investigating cattle loses.

Image B



Image C



Image D



Picture courtesy of Jodi Schell