

# 2025 Weather in Review

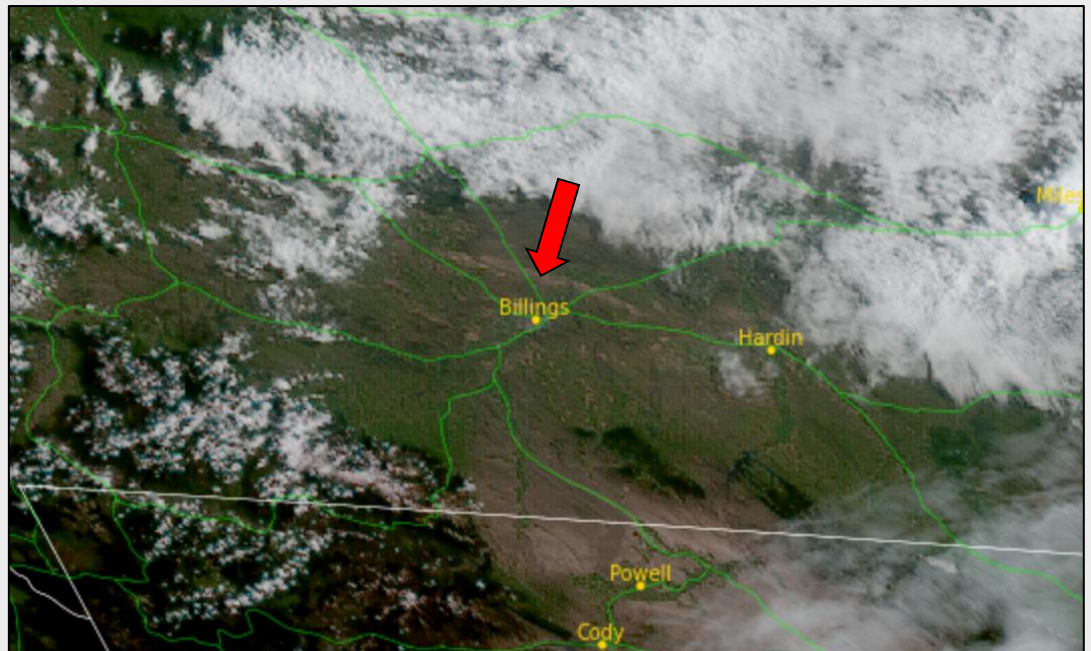


The following is a weather review for the Billings forecast area, which includes southeast Montana, parts of south-central Montana, and Sheridan County in Wyoming.

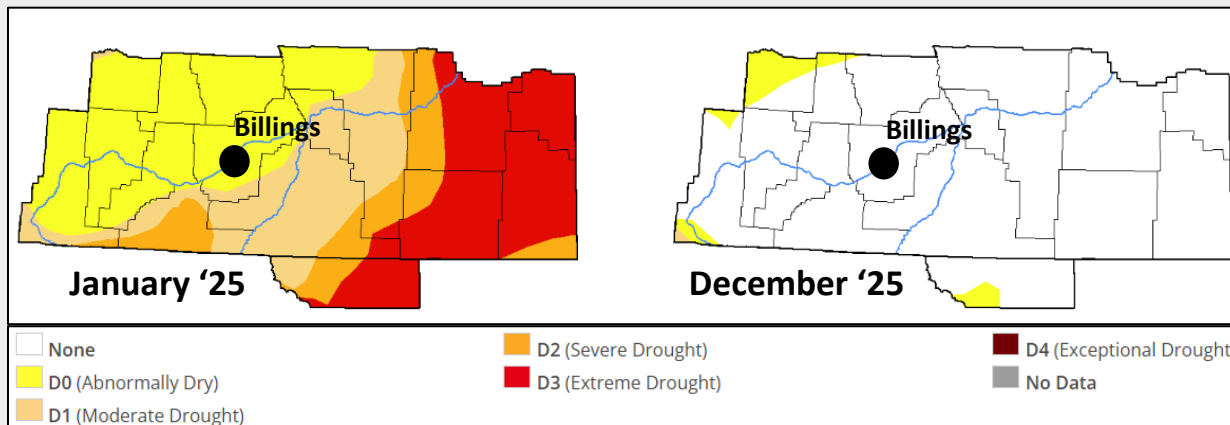
Overall, 2025 saw warmer than normal temperatures and above normal precipitation. February was a very cold month, and the summer experienced near normal temperatures, but it was much warmer than normal through the fall and early winter. The first widespread snow of the fall did not occur until the end of November. In fact, Billings' first measurable snow on November 28<sup>th</sup> was the 3<sup>rd</sup> latest first snow on record. Mountain snowfall also started slowly in the fall but picked up in December.

A fairly wet spring and summer led to an active severe season, which began quite early with severe thunderstorms occurring before the end of April. Our office issued a total of 264 severe thunderstorm warnings in 2025, the most since 389 were issued during an epic 2001 season. One of the more memorable severe storms impacted the Shepherd area on June 16<sup>th</sup>. This storm

produced strong winds and caused extensive damage to trees and roofs, in addition to accumulating dime to quarter size hail which produced a "wintry" scene. The swath of hail damage to fields and crops was significant enough to be seen on satellite imagery for several weeks after the storm. The June 28<sup>th</sup> satellite image to the right shows this feature (the light brown line north and east of Billings).



The wet weather also resulted in a subdued wildfire season and improving drought conditions. Below are maps showing drought status at the beginning of January and end of December. Little to no drought was observed from mid-summer through the end of the year.



Weather through the fall was quiet, then a windy pattern emerged in December, partially attributable to the onset of weak La Nina in the tropical Pacific Ocean, which favors windier than normal conditions for the northern high plains during the winter. There were three separate significant high wind events between December 9<sup>th</sup> and 19<sup>th</sup>. The Big Timber airport measured frequent gusts in excess of 90 mph during the early morning of the 9<sup>th</sup>, including a peak gust of a whopping 97 mph. On the 19<sup>th</sup>, Sheridan’s peak gust of 79 mph was a record for the site for any time of year, dating back to 1974. The strong winds affected not just our area but all of the northern plains.

Christmas of 2025 was not only snow-free, it was also very mild with many locations seeing temperatures in the upper 50s and 60s. Livingston (56°), Billings (61°) and Sheridan (68°) each set record highs for Christmas day. The high at Sheridan remarkably occurred at 3:16am, due to descending warm & dry winds in the lee of the Bighorn Mountains.

Below are 2025 statistics for each of our main climate stations.

	Average Temp	Total Precip	Warmest Temp	Coldest Temp	Wettest Day	Peak Wind	Records Began
<b>Billings</b>	49.1° + 0.9° 17 <sup>th</sup> warmest	18.28" + 3.97" 13 <sup>th</sup> wettest	100° (August 19)	-19° (Feb 11,19)	0.83" (May 18)	79 mph (Dec 17)	1934
<b>Livingston</b>	46.1° + 0.6° 27 <sup>th</sup> warmest	13.83" - 0.72" 30 <sup>th</sup> driest	97° (August 19)	-23° (Feb 11,12)	0.95" (October 11)	90 mph (Feb 23)	1948
<b>Miles City</b>	47.3° + 1.1° 25 <sup>th</sup> warmest	13.18" + 0.30" 45 <sup>th</sup> wettest	103° (July 9)	-30° (Feb 11,19)	1.32" (June 15)	80 mph (June 15)	1937
<b>Sheridan</b>	46.3° + 0.9° 28 <sup>th</sup> warmest	18.78" + 3.85" 15 <sup>th</sup> wettest	101° (August 19)	-27° (February 19)	1.31" (May 19)	79 mph (Dec 19)	1907
<b>Baker</b>	44.2° + 0.6° 13 <sup>th</sup> warmest	18.07" + 3.49" 5 <sup>th</sup> wettest	104° (August 20)	-38° (February 11)	1.69" (October 16)	79 mph (August 7)	1998

The following tables show daily records either tied or broken at our four main climate sites during 2025 (excluding Baker due to its short period of record). Records go back to 1934 at Billings, 1937 at Miles City, 1907 at Sheridan and 1948 at Livingston.

Billings Records	
Record High Temps	79° on March 27
	81° on April 11
	87° on May 10
	70° on November 13
	61° on December 25
	55° on December 31
Record Low Temps	-19° on February 11
	-19° on February 19
	41° on June 23
Record Precipitation	0.32" on January 4
	0.27" on February 2
	0.35" on February 7
	0.42" on March 18
	0.75" on May 13
	0.51" on October 11
	0.49" on November 28
	0.37" on December 11
0.72" on December 12	
Record Snowfall	3.8" on February 2
	5.1" on February 3
	6.8" on February 7
	4.6" on February 16
	5.4" on February 17
	8.8" on December 12

Miles City Records	
Record High Temps	82° on March 27
	90° on May 10
	92° on May 11
	102° on August 19
	70° on November 13
Record Low Temps	-24° on February 18
	-30° on February 19
	41° on June 23
	-14° on November 30
Record Precipitation	1.32" on June 15
	1.19" on October 16
	0.15" on December 10

Livingston Records	
Record High Temps	76° on April 11
	83° on May 10
	96° on August 20
	67° on November 10
	61° on December 10
	60° on December 14
	60° on December 15
	58° on December 24
56° on December 25	
Record Low Temps	-23° on February 11
	-23° on February 12
	10° on April 18
	34° on June 6
Record Precipitation	32° on September 6
	0.26" on January 4
	0.62" on April 16
	0.95" on October 11
	0.25" on November 24
0.24" on December 22	

Sheridan Records	
Record High Temps	79° on Mar 27
	81° on April 11
	101° on August 19
	75° on November 14
	63° on December 16
	68° on December 25
	56° on December 31
Record Low Temps	-27° on February 19
	35° on June 23
	31° on September 6
Record Precipitation	0.42" on January 4
	0.93" on March 18
	1.13" on April 28
	0.33" on December 11

The following is a chronological list of significant or noteworthy weather events that occurred across the region in 2025.

**January 2-5:** A period of overrunning snowfall, courtesy of Pacific moisture and a cold air mass east of the mountains, followed by the passage of an upper-level disturbance, brought widespread snowfall to the region. Most areas west of Rosebud County saw 6-12" of snow, and one to two feet fell over the western mountains. Most eastern areas saw 3-6", but up to 11" fell near Biddle.



**January 11-12:** A moist and unstable northerly flow produced heavy snowfall in central portions of the forecast area, especially in Big Horn, Sheridan and southern Rosebud Counties where lower elevations saw up to a foot of snow. Gusty northwest winds also produced blowing and drifting snow. The mountains saw 1 to 2 feet, and given the persistent echoes on radar imagery there was a good chance of even higher totals over the Pryor and northern Bighorn Mountains. Western lower elevations, including Red Lodge, were much drier due to downslope winds. Eastern areas saw some light snow at the initial stages of this event. US-212 was closed for nearly 24-hrs from Crow Agency to Alzada. US-14 from Dayton

to Shell was also closed for a time due to heavy snow and blowing snow.

**January 18-20:** Coldest air mass yet of the winter. Though not extreme, the entire region saw sub-zero temperatures, and the far east had one or two sub-zero highs. Some lows included: Baker -32°, Hysham 25SSE -31°, Red Lodge & Ekalaka -28°, Powderville 8NNE -25°, Hardin/Huntley/ Ingomar -24°, Bridger -22°, Broadus -21°, Miles City -17°, Livingston -11°, Billings -9°.

**January 20-21:** Strong winds occurred along the western foothills as the arctic air departed. Peak gusts: Livingston airport 83 mph, Big Timber airport 71 mph, Pine Creek 70 mph, Nye 66 mph, Emigrant 4SW 65 mph, Harlowton 62 mph, Twodot 7WNW 60 mph, Miner 6NNE 59 mph, Molt 8WSW 58 mph, Lavina 7N 56 mph. I-90 westbound at Livingston was closed from mile markers 337 to 330 when a semi was blown over. US-191 from Harlowton through Judith Gap was closed to high-profile vehicles.



**January 23-24:** Snow impacted the southwest portion of our forecast area with 3-6" of snow at lower elevations and 5-10" in the mountains. Travel on I-90 from Bozeman Pass to Park City was impacted.

**January 31 – February 3:** Moist Pacific flow brought heavy snow to the Beartooth-Absaroka Mountains and an extended period of overrunning snow at lower elevations. Fisher Creek Snotel, at 9100' near Cooke City, picked up 3" of snow water from the evening of the 31<sup>st</sup> through the 3<sup>rd</sup> (an 80-hour period), an estimated 45" of snow accumulation. Western lower elevations saw significant snowfall, roughly 7-13" west of Rosebud County. Eastern areas saw 3-6". Some of the higher totals included: Mystic Lake 25", Luther 14", Reed Point 13.5", Twodot 13.4", Columbus 12.9", Red Lodge 12.8", Nye & Rapelje 12W 12", Springdale 10.3", Livingston & Park City 10", Sheridan area 7-12", Billings area 7-9". Cold air was locked in place east of the mountains. Lower elevation temps were in the single digits above and below zero for a couple of days, while mountain temps were much warmer (20s & 30s).

**February 7:** Snow impacted the region, with heaviest amounts west of Rosebud County where 6-12" was common. Southeast MT picked up 2-6", while the Beartooth-Absarokas saw 12-18" of snow. A few of the higher amounts: Mystic

Lake 16", Big Timber 13", Luther 10", Twodot 7WNW 10", Billings area 7-10", Roundup 9", Pine Creek & Columbus 8", Hysham 25SSE 7", Forsyth 5.5".

**February 10-12:** A cold stretch of weather with the entire region seeing sub-zero nighttime lows, and wind chills well below zero. Some of the colder observed temps: Huntley & Ingomar 9E -43°, Plevna -39°, Brandenburg & Baker -38°, Forsyth -35°, Ekalaka & Roundup 15SW -34°, Columbus -32°, Broadus & Miles City -30°, Big Timber -26°, Billings NWS -25°, Livingston -23°. **The low temperature of -38° at the Baker airport was the all-time record low for the site, dating back to 1998.**



**February 12-13:** A period of strong winds, combined with significant snow cover, resulted in blowing and drifting snow on I-90 at Livingston and Big Timber. I-90 was closed between MM 330 & 337 from 11pm on the 12<sup>th</sup> until the evening of the 13<sup>th</sup>. Peak gust at the Livingston airport was 66 mph, while Big Timber was 61 mph. To the left is a DOT web camera image of I-90 at Livingston just before sunrise on the 13<sup>th</sup>.

**February 14-15:** Light snow around the region, with 1-3" of accumulation.

**February 16-19:** Overrunning snowfall and cold temperatures. Snow was heaviest west of Rosebud County, where 6-12" fell over a large area. Little to no snow fell from Miles City to Baker and Ekalaka. Western Mountains saw 1-2.5 feet of snow. By the end of this event, snow cover across the region was significant. The west half had snow depths of 1 to 2 feet, with snow water content of 1.5-2.5 inches. Temps were bitterly cold when the snow tapered off. A few lows on the morning of the 19<sup>th</sup> included: Huntley -48°, Ingomar 9E -40°, Roundup 15SW -35°, Hysham 25SSE & Brandenburg -34°, Plevna & Baker -33°, Forsyth -32°. Broadus -31°, Miles City -30°, Columbus -29°, Billings NWS -28°, Sheridan -27°, Billings airport -19°.

**February 2-19:** An extended period of cold temperatures and accumulating snowfall impacted the region. Below is a summary of total snowfall, peak snow depth, average temperatures, and coldest temperatures at a variety of stations.

SITE	TOTAL SNOWFALL	PEAK SNOW DEPTH	SITE	AVERAGE TEMP	COLDEST TEMP
Mystic Lake	55.4"	41"	Baker	- 6.2°	-38°
Livingston 1WSW	40.3"	22"	Plevna	- 5.0°	-39°
Melville 4W	40.1"	24"	Ingomar 9E	- 4.6°	-43°
Livingston 12S	38.3"	31"	Huntley	- 2.9°	-48°
Columbus	36.3"	25"	Forsyth	- 2.7°	-35°
Red Lodge	35.6"	30"	Hysham 25SSE	- 1.7°	-37°
Big Timber	35.5"	24"	Roundup 15SW	- 1.3°	-35°
Billings	30.7"	18"	Ekalaka	- 0.7°	-34°
Huntley	29.3"	15"	Brandenburg	- 0.6°	-38°
Park City	29.0"	18"	Ridgeway 1S	- 0.4°	-31°
Springdale	27.2"	25"	Springdale	0.0°	-25°
Hardin	23.4"	13"	Pompey's Pillar 15N	0.1°	-26°
Roundup 15SW	23.0"	12"	Columbus	2.4°	-32°
Ryegate 18NNW	22.0"	14"	Hardin	2.5°	-30°
Pompey's Pillar 15N	21.4"	14"	Billings Airport	2.5°	-19°
Big Horn	20.7"	14"	Broadus	2.8°	-31°
Dayton	20.0"	16"	Bridger 2N	3.7°	-26°

Bridger 2N	18.0"	18"	Sheridan	4.8°	-27°
Hysham	17.7"	10"	Livingston	5.7°	-23°
Forsyth	12.0"	7"	Red Lodge	5.9°	-23°

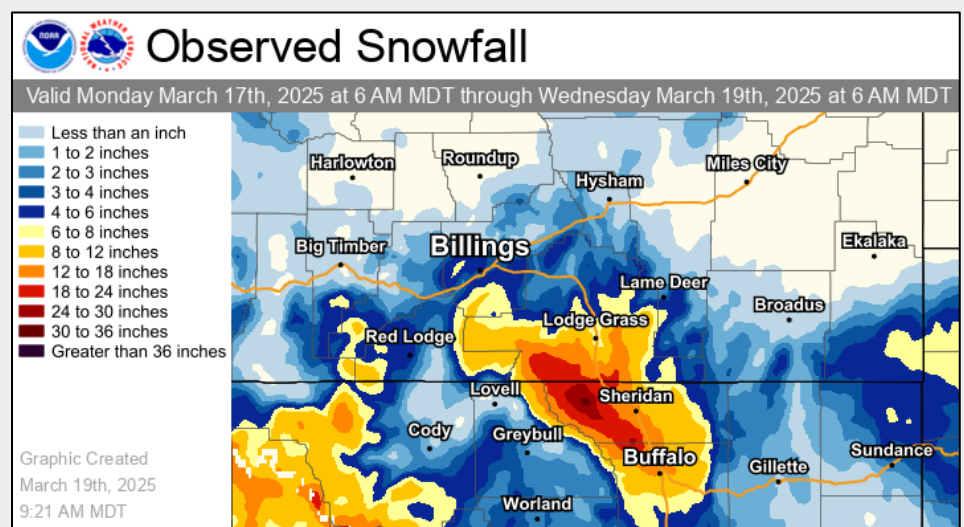
**February 23:** Livingston airport measured a 90 mph gust, the 3<sup>rd</sup> highest gust on record. It was also the 2<sup>nd</sup> gust over 90 mph in the past year.

**March 4:** A brief period of snow produced 1-3" amounts (4-7" along foothills), mainly west of Rosebud County.

**March 6:** Southern upslope areas received heavy snow as a dynamic weather system moved through Wyoming. Northern areas saw little to no snowfall. Amounts included: Luther 18", Red Lodge 16", Story 15", Nye 10.5", Sheridan area 6-10", Big Horn 9", Fishtail 8", Lodge Grass 7W 4.7".

**March 16-17:** Strong winds impacted some foothills locations during the night of the 16<sup>th</sup> and early morning of the 17<sup>th</sup>. Peak gusts included: Livingston 63 mph, Dayton 62 mph, Sheridan & Ruby Creek 60 mph.

**March 18:** Heavy wet snow impacted the southern foothills, and southeast Montana near the Wyoming state line. Some of the higher amounts included: Story 2WSW 26", Cole Creek Snotel and Burgess Junction 24", Dayton 21", Big Horn 16.7", Ranchester 14", Ridge 4NE 13", Red Lodge 11", Sheridan 10". Lodge Grass 7W 9.1", Luther 3SW 8.5". Interstate 90 from Sheridan to Buffalo was closed for about 15 hours starting the afternoon of the 18<sup>th</sup>. US-14 east of Sheridan was also closed. The Sheridan airport reported visibility down to ¼ mile frequently.



**March 27:** A hot day. Billings (79°), Sheridan (79°) and Miles City (82°) set or tied daily record highs. For Billings & Sheridan, it was the earliest occurrence of 79° on record. A few other high temps: Hardin & Billings NWS 84°, Huntley & Brandenburg 83°, Crow Agency 82°, and Broadus 80°.

**April 11:** Another very warm day. Powderville 8NNE 86°, Crow Agency & Dayton 85°, Hardin & Broadus 84°, Busby & Huntley 83°, Bridger 82°, Billings & Sheridan 81°, Baker & Miles City 80°.

**April 16-17:** A heavy wet snow fell over west and central parts. Totals up to a whopping 36" were estimated in the mountains near Red Lodge. Other amounts: Luther 19", Red Lodge 17", Story 12", Roscoe 11", Columbus & Reed Point 10", Billings area 6-10", Bull Mountains 6-9", Colstrip & Big Timber 8", Lame Deer & Huntley 7", Sheridan area 4-6". Along with the snow cover, Livingston broke its daily record low on the 18<sup>th</sup> with a chilly 10°.

**April 27:** The first severe thunderstorms of the season occurred in southeast Montana, and our office issued a total of nine Severe Thunderstorm Warnings. Some severe reports included: 2" hail near Olive, 1.5" hail near Powderville, 61 mph wind gust near Ekalaka, 58 mph wind gust near Fishtail. These storms also produced heavy rain. Box Elder creek in northern Carter County rose sharply due to heavy rain, and Highway 323 was reported to have water flowing over it (a Flood Advisory was issued for this area).

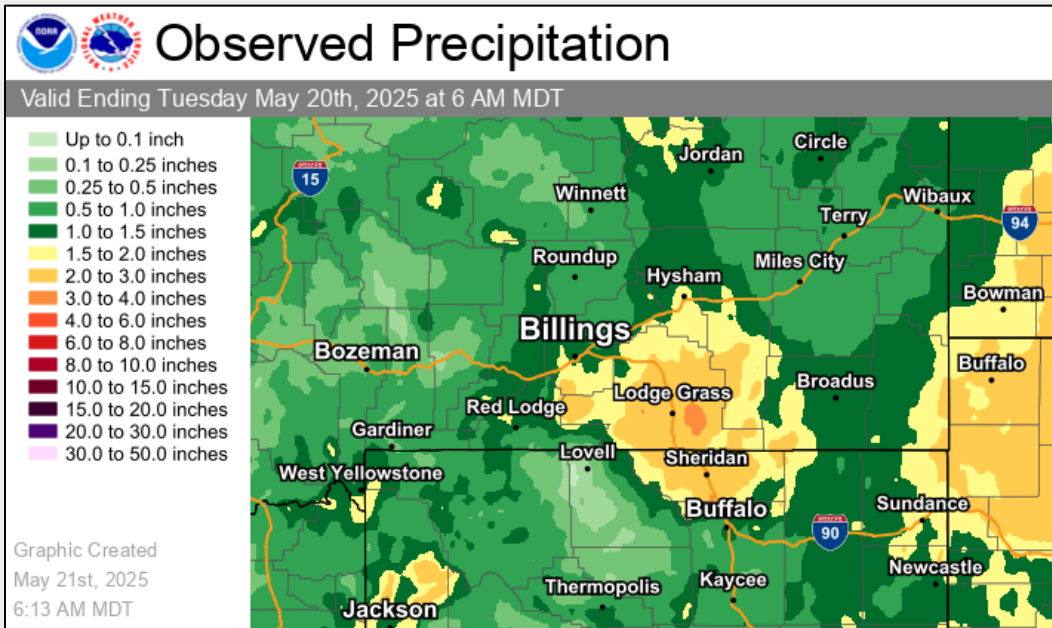
**April 27-28:** Weather system produced widespread moderate to heavy rain, and mountain snow. Precipitation was heaviest over the mountains and foothills. Fishtail received 4.38", Roscoe 3.53", Big Timber 2.31", and up to 2" near

Sheridan. High elevation snow was heavy, with an estimated 37" in the mountains near Red Lodge, and up to 28" in the Bighorns near Burgess Junction. Mystic Lake picked up 8", Story 7" and Red Lodge 1-4" of snow.

**May 10-12:** A hot stretch of days, with widespread highs in the 80s to lower 90s (hottest in the east). Baker and Miles City each observed 3 straight days with temps reaching 90° or higher. Powderville 8NNE and Baker each reported a high of 93°.

**May 11:** A few thunderstorms produced severe wind gusts, including Lame Deer 6ENE 75 mph, Fort Smith 22SW 65 mph, Sonnette 10NNW 59 mph, Cooney Reservoir 3NW 58 mph.

**May 13-15:** A wet 3-day period with most of the region seeing 0.50-1.50" of precipitation. Columbus 8ESE saw 1.84", Fort Smith 1.76" and Park City 1.58". The 0.75" of rain at the Billings airport tied its daily record.



**May 18-19:** WET. Much of the area saw over an inch of precipitation, with highest amounts (2 to 3 inches or more) in south central parts. Wolf Mountain Raws saw 3.69" of rain while the coop observer in Story reported 4.49" over a 2-day period. As a result of the heavy rain, there was minor flooding reported on northeast aspects of the Bighorn Mountains. Snowfall of 6-12" fell in the Bighorns above 7000 feet, including 12" at Burgess Junction.

**June 13:** Severe thunderstorms, especially over the west. Wind damage in the Harlowton area included multiple structures with lost roofs, uprooted trees and tree limb damage, power lines downed, and up to 2" diameter hail. Other reports include: 2.75" hail at Pryor, 2" hail at Ryegate, 1.75" hail near Columbus, tree damage at Worden, 1.50" hail at Fox, 1.25" hail at Rockvale, 1.50" hail at Busby, 1" hail near Hardin.

**June 15:** More severe weather. Miles City was impacted by a peak gust of 81 mph at the airport, and widespread urban flooding as a result of heavy rain. Miles City's 1.32" of rain set a daily precipitation record for the station. Other reports: 71 mph gust near Medicine Rocks State Park, 77 mph gust at Ekalaka 7SE, 64 mph gust at the Hardin airport, 1" hail north of Roundup.

**June 16:** More intense severe weather. Possibly the most severe thunderstorm of the summer impacted the Shepherd/Huntley area with extensive tree damage, several roof tops of homes and businesses damaged or ripped up,



and pea to quarter size hail accumulating up to 8". The strongest observed gust was 76 mph at Worden 4SW. Other severe weather included: 1.75" hail near Ranchester, 60 mph wind gust near Acton and at Billings West End, 1" hail at Laurel and Big Timber, 1.50" hail near Huntley, and 1.25" hail just north of Red Lodge. Photo at right is of a "snowy" scene at the Huntley Ag Station due to the significant hail accumulation. This storm also produced a swath of hail damage which could be seen on satellite imagery for the next few weeks.

**June 22:** High elevation snow caused WY-DOT to close the Beartooth Pass, with a reported 12-14" of snowfall on the Wyoming side.

**June 28:** Some severe weather impacted southeast Montana during the evening: 1.25" hail near Kirby, roof damage near Quietus, and a 60 mph wind gust near Moorhead.

**July 5:** Severe thunderstorms impacted the east half of our forecast area, including: 1.75" hail near St Xavier and Busby, 1" hail near Lame Deer, 70 mph gust at Birney 10E and Alzada 2ESE, 60 mph gust near Muddy and 59 mph gust near Ingomar.

**July 9:** A couple of severe thunderstorm wind gusts occurred, including a 61 mph gust at Coalwood and 70 mph gust near Medicine Rocks State Park (south of Baker).



**July 15-16:** A period of unseasonably cool and wet weather impacted the region. High temperatures in the 60s were the coolest it's been in July 8-31 since the 1990s, and some daily record cool highs were broken. Most rain wasn't heavy, but it fell intermittently throughout the 15<sup>th</sup> and into the 16<sup>th</sup> (unusual for July). Some locations received over an inch of rain. Heavy rain along the eastern slopes of the Bighorns (0.70" in 30 minutes southwest of Dayton) during the evening of the 15<sup>th</sup> caused localized flash flooding and debris flows on the Elk Fire burn scar. At least

four debris flows occurred along US-14, closing the highway for 3 to 4 hours.

**July 19:** A few severe thunderstorms impacted far southeast Montana during the evening, including: golf ball size hail and a 65 mph wind gust near Mill Iron, 60 mph wind gust at Knowlton Raws, 58 mph wind gust near Biddle.

**July 20:** Severe thunderstorms impacted the region. Below is a summary:

- 75 mph wind gust at Hardin (Big Horn County Airport); blowing debris caused car damage at campground
- 70 mph gust near Webster
- 68 mph gust at Miles City Airport; some wind damage in Miles City
- 60 mph gusts at Epsie and Broadus
- 1.50" hail near Broadus
- 1" hail near Baker and Olive; large tree downed near Olive

**July 21:** More severe weather: 67 mph gust near Hathaway, 2" hail in Shawmut, 1.75" hail near Lavina, a 78 mph gust near Lame Deer.

**July 25:** A severe thunderstorm produced 1.25" hail near Plevna, and 1" hail near Ismay.

**July 27:** A severe thunderstorm produced a 64 mph wind gust at Baker at 12:45 am. Later during the evening, a severe thunderstorm produced 1" hail at Harlowton 11NNW.

**July 28:** A big severe weather day. At 9am, a severe thunderstorm produced quarter size hail near Ismay, but most severe weather occurred in the evening. A summary:



- In Roundup, very heavy rain caused flooding of drainage ditches and streets. The storm produced 1.75" hail a few miles to the northwest of Roundup. Hail (1.25" diameter) went thru a patio roof, drifts of hail occurred, and there was basement flooding 3 miles NNE of Roundup.
- Two separate severe thunderstorms impacted the Billings area. The first produced 1.50" hail in the Heights, with some accumulation. Another storm passed just south of the city and produced up to 2" diameter hail just south of the river, shredding leaves, denting cars, and damaging shingles and gardens. Very heavy rain caused some urban flooding, including on Grand Avenue, with floating construction cones. Once the storm moved further east and southeast it started producing strong winds, including 62 mph gust a few miles south of Lockwood, and a 66 mph gust at Arrow Creek Hill on I-90.
- Other severe reports included: 2" hail at Joliet, 1.50" hail near Acton and Laurel, 1" hail near Ismay, 70 mph gust at Rock Springs, 64 mph gust near Ingomar, and a 63 mph gust near Bascom (northern Rosebud County).

**July 29:** Another round of severe weather, this time over southeast MT, as a very moist and unstable air mass settled over the region. Reports included: up to 2" hail a little west of Miles City, 1.75" hail at Volborg 17NE, 60 mph wind gust near Medicine Rocks State Park, wind damage to tree limbs in Kinsey, and a 74 mph gust at Alzada.



**August 7:** More severe weather across the region.

The event began with a storm that intensified north of Columbus and tracked east to Billings. Reports in and around Billings included: up to 1.75" hail between Laurel & Molt, many reports of 1-1.25" hail across the northern portion of Billings (north of the interstate). As storms moved eastward, damaging wind became a bigger risk. Additional reports: Ingomar 59 mph gust, Forsyth 60 mph, Garland 13W 60 mph,

Sarpy Creek Mesonet 64 mph, Sweeney Creek DOT 68 mph, Miles City airport 74 mph, Baker 79 mph.

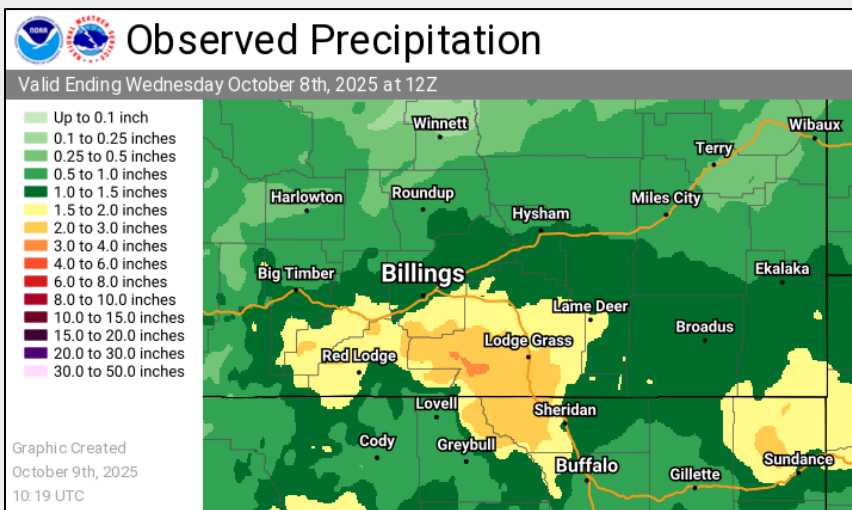
**August 12:** An apparent microburst caused very localized wind damage on the east side of Bridger. Reports included tree damage, large trees uprooted, and a grain silo destroyed.

**August 17:** A severe thunderstorm produced a 58 mph wind gust at Angela, and a short time later, a 66 mph gust at the Miles City airport. A tree fell into a power line near Miles City.

**September 10:** Severe wind gusts occurred in the evening. A severe thunderstorm produced localized 61 mph wind gusts on the west side of Billings. Other wind reports included: 60 mph near Biddle, 59 mph near Ekalaka, 61 mph near Bascom and 63 mph at Baker (at around midnight).



**September 12:** A severe thunderstorm produced a 59 mph wind gust at Baker in the late evening.



**October 4-5:** Widespread precipitation, including the first significant mountain snowfall of the season, impacted the region. Most locations saw between 0.50-1.50" of precipitation, but up to 2" occurred along the southern foothills. Mountains above 8000 feet saw heavy snow, but wet snow was observed along the foothills as well (with little accumulation). The Beartooth Highway above Vista Point was closed from this storm.

**October 15-16:** A dynamic weather system brought widespread rain and high elevation snow. Heaviest precip was Rosebud County eastward, where 1-2" were common.

Knowlton Raws picked up 2.29". Other reports included: Cannonball Creek 1.92", Baker 1.86", Miles City 1.59", Badger Peak & Cow Creek Raws 1.37", Brandenburg & Plevna 1.05".

**October 19:** Gusty winds impacted the region. Peak gusts: Livingston 66 mph, Nye 59 mph, Emigrant 53 mph, Capitol 8SW 58 mph. This was the first "wind" event of the fall.

**November 1-2:** Strong winds along the foothills. Peak gusts: Livingston 72 mph, Nye 57 mph, Fishtail 55 mph, Big Timber 52 mph. Quad Creek Raws above Vista Point on the Beartooth Highway reported a peak of 77 mph.

**November 13-14:** A couple of warm days with many locations reaching the 70s. Sheridan's high was 75°.

**November 28-29:** Widespread snow, the first of the season for the lower elevations. Most areas saw 2-6", but banding downwind of the Snowy Mountains resulted in higher amounts in the Billings area (6-9") and in northeast Stillwater (8" near Molt). Travel conditions were poor as the coldest air yet of the season arrived. A few low temps from the 29-30<sup>th</sup>: Ekalaka -20°, Ridgeway -18°, Baker & Brandenburg -17°, Huntley -16°, Ingomar & Busby -15°, Miles City -14°, Sheridan -6°, Billings -5°.

December 8: Wind damage in Big Timber (Wagner)



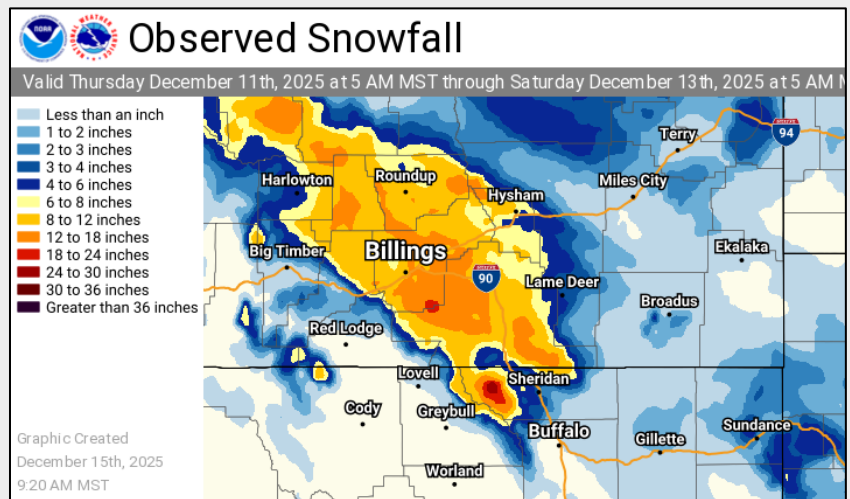
**December 8-9:** Very windy along the US-191 corridor from Big Timber to Harlowton & Judith Gap. Big Timber airport peaked at a whopping 97 mph, and gusts exceeded 90 mph frequently between 3-7am on the 9<sup>th</sup>. Other peak gusts: Quad Creek (9773' above Vista Point in Beartooths) 96 mph, Crazy Raws (7320' on north side of Crazy Mountains) 93 mph, Melville 3NE 81 mph, Livingston 82 mph, Big Timber (in town) 77 mph, Harlowton 74 mph, Springdale & Sourdough 7N 73 mph, Nye 71 mph, Harlowton 6E 67 mph, Emigrant 63 mph, Judith Gap, Billings & Sheridan 59 mph.

There were several downed trees and power lines in Big Timber, as well as damage to some businesses.

**December 10-11:** Very warm conditions across the region before a strong Canadian cold front arrived on the afternoon of the 11<sup>th</sup>. High temps: Dayton & Bridger 65°, Columbus 64°, Sheridan & Red Lodge 62°, Livingston & Billings 61°.

DEC 17-18 PEAK WIND GUSTS	
Big Timber	86 mph
Sourdough 7N	86 mph
Hedgesville 9NE	85 mph
Cooney Reservoir	83 mph
Livingston	82 mph
Harlowton	82 mph
Melville 3NE	82 mph
Twodot 7WNW	81 mph
Billings	79 mph
Miles City	79 mph
Alzada	78 mph
Baker	77 mph
Lame Deer 5E	77 mph
Ingomar	76 mph
Reed Point	75 mph
Crow Agency	73 mph
Ekalaka	72 mph
Roundup 11NNE	72 mph
Sheridan	72 mph
Home Creek Divide	71 mph
Springdale	69 mph
Hardin	67 mph
Red Lodge	60 mph

(72 mph) were December records.



**December 11-12:** Turning much colder with widespread heavy overrunning snowfall, with greatest amounts east of the foothills and west of Custer/Powder River. Much of this area saw 6-12" but there were locally heavier amounts. Note that on the map above, some totals distant from Billings are underdone because the radar beam overshoots the precipitation at that range. Billings airport received 13.0" of snow and 1.09" of water equivalent, both very impressive for a 2-day period in December. As temps plunged late day on the 11<sup>th</sup>, roads turned icy and travel conditions hazardous. Some places in the east eventually fell below 0°, including Baker (-10°), Plevna (-7°), Ekalaka (-3°) and Miles City (-2°).

**December 17-18:** This was an historic wind event for not only our region, but all of eastern Montana, eastern Wyoming, and the Dakotas. Strong winds began along the western foothills early on the 17<sup>th</sup>, then spread across the lower elevations through the day and into the early morning of the 18<sup>th</sup>, as an intense low pressure system moved across the northern plains. There were several reports of downed trees and power lines. To the left is a table of peak wind gusts. Regarding our main climate stations, over the past 50 years, the peak gusts at Billings (79 mph), Miles City (79 mph), and Sheridan (72 mph) were December records.

**December 19:** The third significant high wind event in 10 days brought high gusts to the western and southern foothills, with mountain wave activity affecting places like Red Lodge and Sheridan. The peak gust of 79 mph at the Sheridan

airport was not only a December record (previously established two days prior) but also a record for any time of year, dating back to 1974. Other peak gusts included: Livingston 76 mph, Banner 3N 75 mph, Lockwood 6S 69 mph, Ruby Creek (Red Lodge 10SSE) 66 mph, Fort Smith 65 mph, Emigrant 63 mph, Melville 3NE 61 mph, Hardin & Crow Agency 59 mph.

**December 25:** A very warm Christmas, with daily records broken at some locations. Most of the area reached the upper 50s and lower 60s. Sheridan jumped to a whopping 68° at 3:16am, courtesy of descending mountain wave activity on the east side of the Bighorns prior to a weak Pacific cold front.

Thanks to our many partners and cooperative weather observers who help us provide weather support and data for folks across southeast Montana and north central Wyoming.

**Have a great 2026 everyone!!**