

June 6, 2011 Central Montana Tornadoes

Severe thunderstorms developed across central Montana during the evening of June 6, 2011. These storms produced tornadoes, large hail, damaging winds and very heavy rainfall. Two tornadoes have been confirmed along with 29 reports of large hail (greater than one inch in diameter), and two severe wind reports.

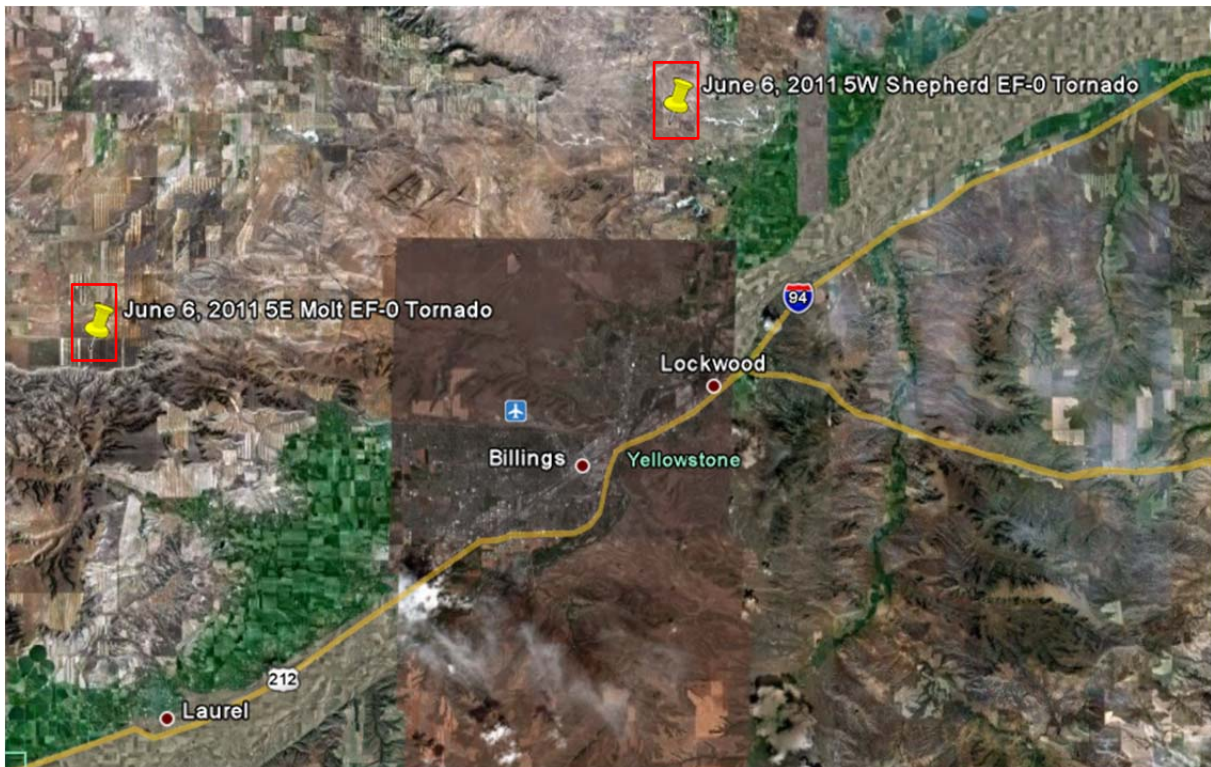


Figure 1: Locations of the Confirmed Tornadoes

*Five miles east of Molt, MT - EF-0 Tornado (65-85 mph winds)

At approximately 845pm, a tornado briefly touched down at a residence 5 miles east of Molt, MT. A 15 foot grain bin was destroyed, picked up and thrown into an outbuilding 50 feet to the southwest. Additional minor damage occurred to the siding and room on a nearby house.



Figure 2: Grain Bin and Minor House Damage

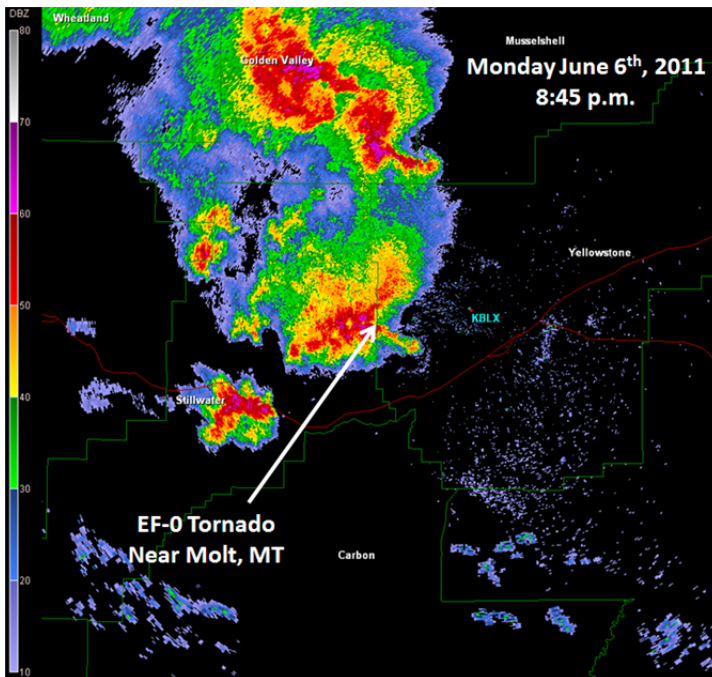


Figure 3: Radar Display of the Supercell Thunderstorm at the Time of the Tornado in Molt

*Five miles west of Shepherd - EF-0 Tornado (65-85 mph winds)

At approximately 930pm, a tornado briefly touched down at a residence 5 miles west of Shepherd, MT. The path of damage was about 50 yards wide and extended to the northeast for about 200 yards. A roof was torn off of a garage and a shed. Debris that was blown into a nearby house caused additional damage to windows and siding. Three power poles in the area sustained damage. A horse trailer was flipped on its side.



Figure 4: House, Garage, Shed and Horse Trailer Damage

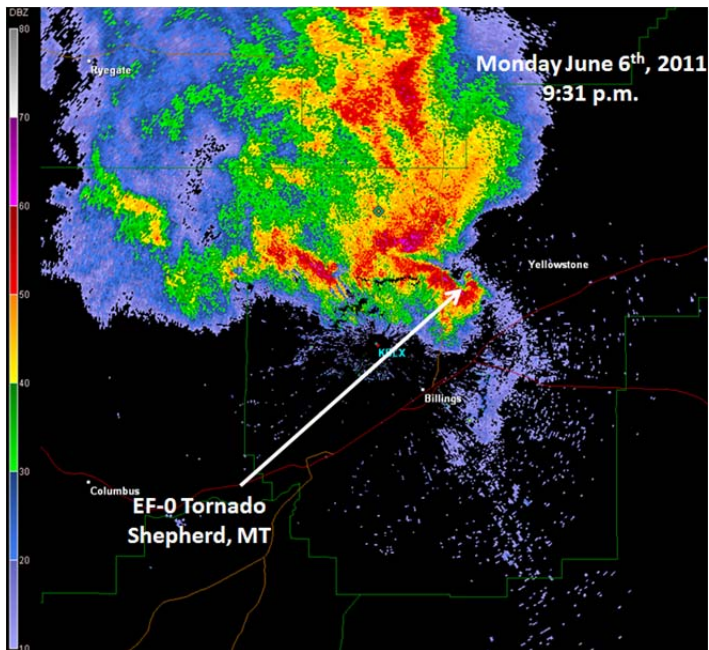


Figure 5: Radar Display of the Supercell Thunderstorm at the Time of the Tornado near Shepherd