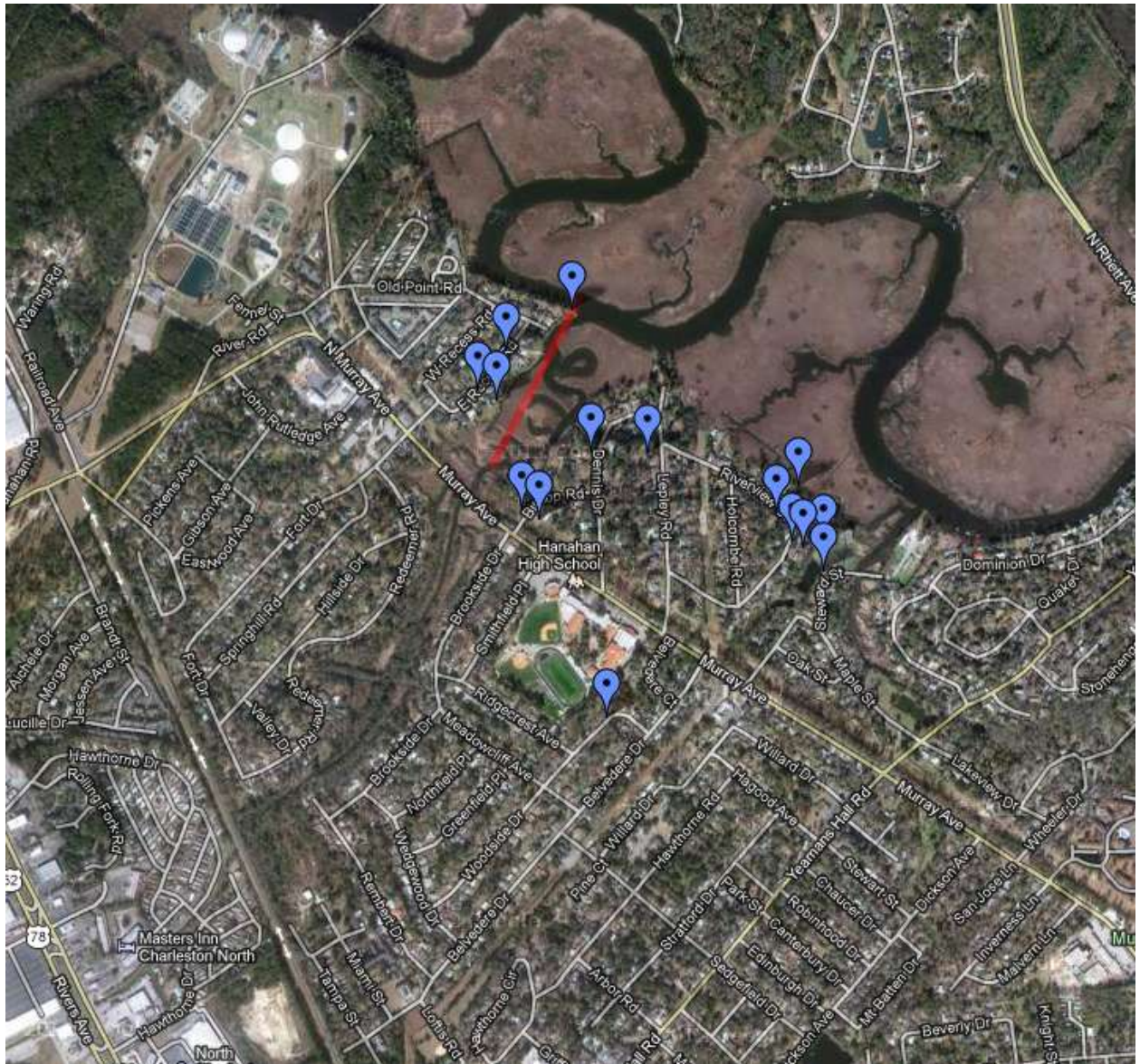


Hanahan, SC EF-0 Tornado

June 27, 2009



...TORNADO CONFIRMED IN HANAHAN SOUTH CAROLINA...

LOCATION...HANAHAN IN BERKELEY COUNTY SOUTH CAROLINA
ESTIMATED TIME...JUNE 27 2009 AT 648 PM EDT
MAXIMUM EF-SCALE RATING...EF-0
ESTIMATED MAXIMUM WIND SPEED...70 TO 85 MPH
MAXIMUM PATH WIDTH...40 YARDS
PATH LENGTH...0.25 MILES

A NATIONAL WEATHER SERVICE STORM SURVEY TEAM HAS CONFIRMED AN EF-0 TORNADO IN HANAHAN SOUTH CAROLINA. BASED ON EYEWITNESS REPORTS AND A SURVEY OF THE DAMAGE...AN EF-0 TORNADO DEVELOPED OVER TURKEY CREEK AND TRACKED SOUTH-SOUTHWEST FOR ABOUT 0.25 MILES ALONG THE MARSH JUST EAST OF EAST RECESS ROAD AND WEST OF DENNIS DRIVE BEFORE DISSIPATING.

STRAIGHT-LINE WINDS PRODUCED EXTENSIVE TREE DAMAGE ADJACENT TO THE SHORT PATH OF THE TORNADO...ALONG A 0.75 MILE WIDE AREA EXTENDING FROM EAST RECESS ROAD TO STEWARD STREET AND ALONG A LENGTH OF APPROXIMATELY 0.70 MILES EXTENDING FROM TURKEY CREEK TO MEADOWCLIFF AVENUE. NUMEROUS LARGE TREES WERE KNOCKED DOWN...TOPS OF MANY TREES WERE SHEARED OFF AND TOPS OF SOME POWER POLES WERE BROKEN OFF. THERE WAS MINOR DAMAGE TO SEVERAL HOMES AND OTHER STRUCTURES...MAINLY A RESULT OF THE FALLEN TREES AND/OR TREE LIMBS. SCE&G REPORTED NEARLY 3500 WITHOUT POWER AFTER THE STORM AS A RESULT OF DOWNED POWER LINES. ALONG WITH THE DAMAGING WINDS...THE PUBLIC ALSO REPORTED HAIL...POSSIBLY AS LARGE AS QUARTER TO GOLF BALL SIZE IN DIAMETER.

\$\$