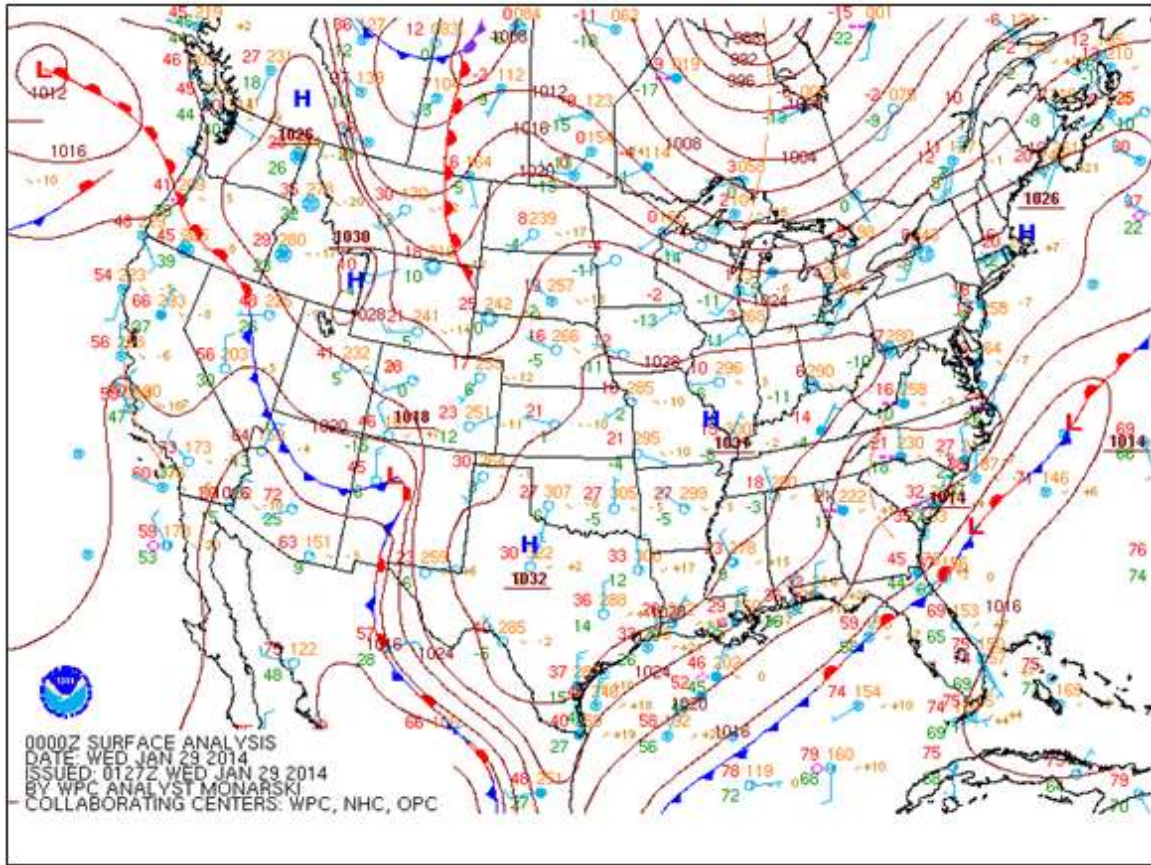


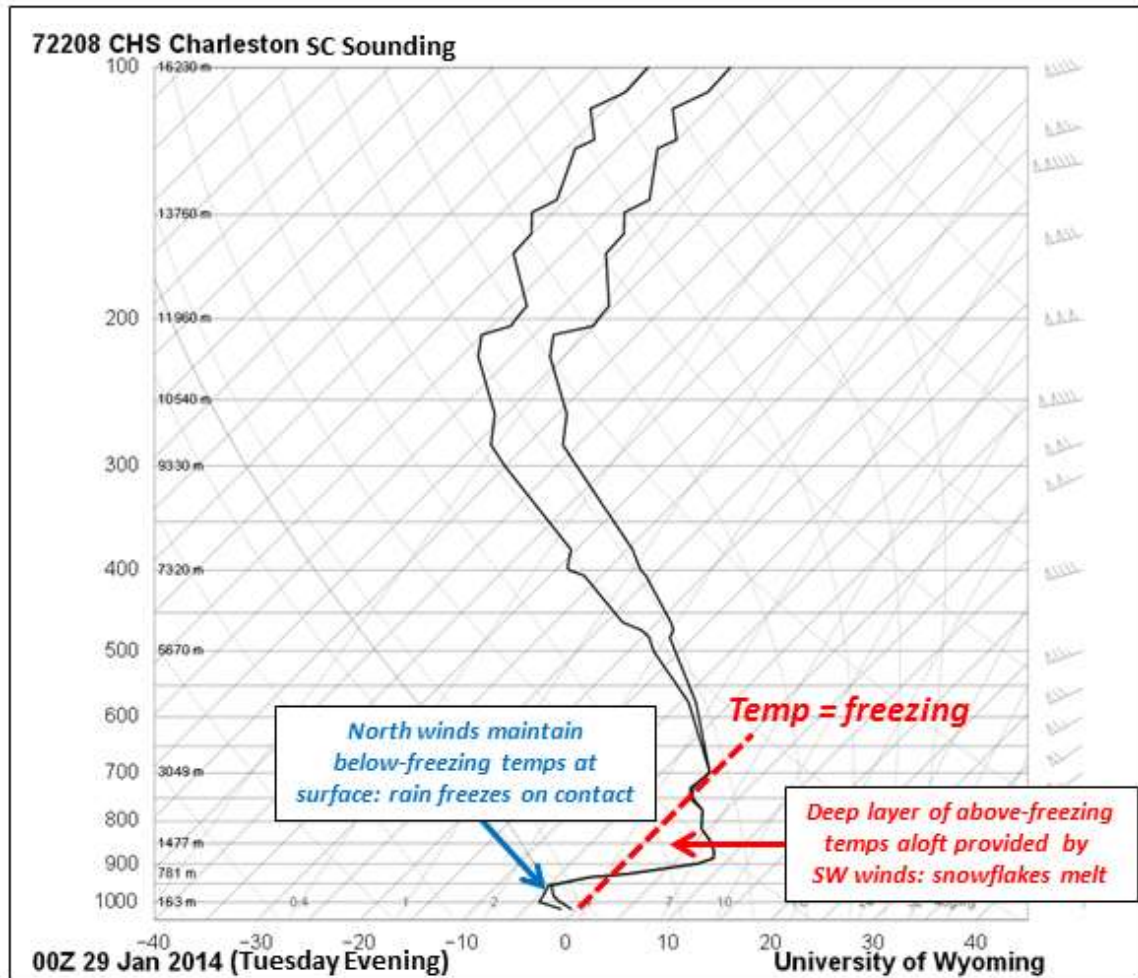
The January 28-29, 2014 Southeast South Carolina and Southeast Georgia Winter Storm

Meteorological Event Summary

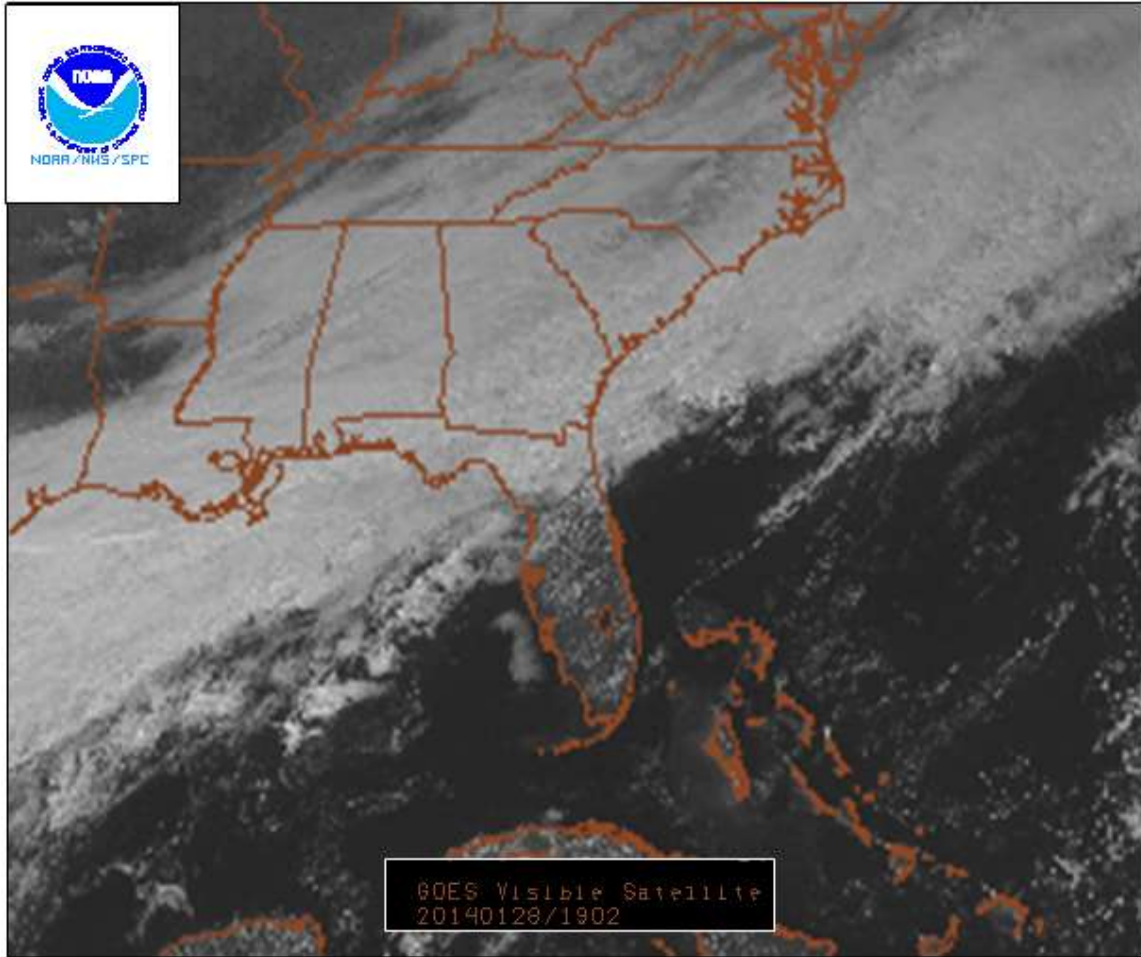
A strong but shallow arctic cold front pushed through the region early Tuesday, 1/28. By evening 1/28, a marked wedge regime prevailed, and northerly surface winds had pushed temps to around 32F at most areas north of I-16. However, a deep elevated layer as warm as +8C was sustained by strengthening southwest winds. As isentropic ascent and upper divergence developed, precipitable water increased to around 1 inch and a southwest to northeast band of precipitation blossomed over the region by late afternoon 1/28. Frontogenetical forcing and fairly weak static stability aloft contributed to convective elements which enhanced precipitation rates through the event. Due to the unique thermal environment, including the ageostrophic maintenance and expansion of low-level cold air, precipitation fell as freezing rain and sleet most of the evening of 1/28 and the early morning of 1/29 north of I-16; this precipitation briefly changed to snow from north to south late night into early Wednesday morning 1/29. Along and south of I-16, temperatures just above 32F persisted longer, and rain mixed with sleet prevailed through Tuesday evening 1/28; then, temperatures fell to around 32F, and freezing rain and sleet fell overnight into the daylight hours of Wednesday 1/29. Freezing rain persisted across far southern counties of coastal GA into Wednesday night as another weak wave of low pressure lifted northeast, and this wave even spread a bit of light freezing rain/freezing drizzle into coastal SC counties. Through Wednesday 1/29, storm total ice accretion amounts around 0.25 inch were common along/north of I-16, and a few inland locations reported as much as 0.75 to 1.00 inch of ice. Ice accumulation closed several bridges across the region, resulting in major travel impacts. Lesser amounts of glaze were reported at most locations south of I-16. Snow/sleet amounts totalled 1 inch or less, with the highest amounts inland where precipitation changed over to snow earliest on 1/29. All told, every location in the CWA received some freezing rain; this was a highly unusual scenario. Also, temperatures remained near or below freezing at many locations until Friday, 1/31, another highly unusual situation that prolonging travel impacts. As late as Friday, 1/31, melting resulted in ice falling from the towers of the Ravenel Bridge, damaging several vehicles - resulting in one non-life threatening injury - and prompting officials to close the bridge again until Friday evening.



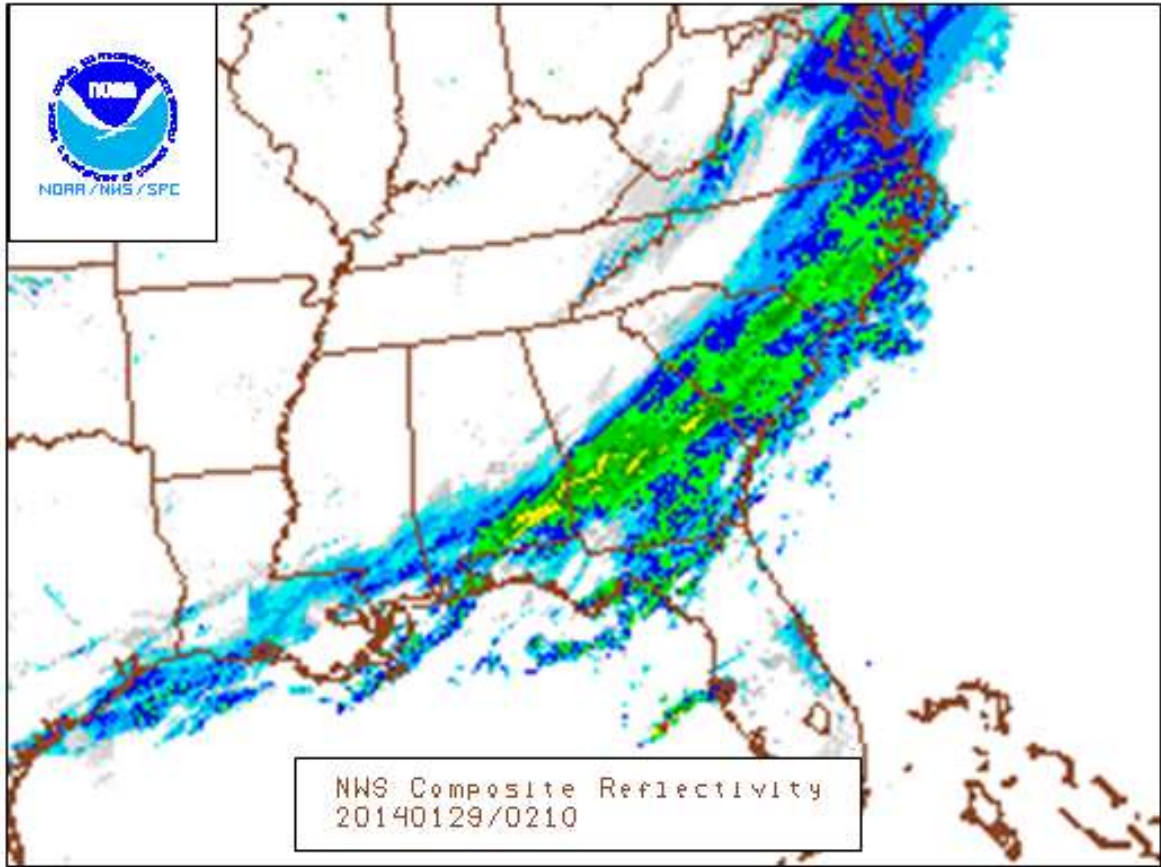
The WPC surface analysis for Wednesday evening, January 29, depicted a stationary front south and east of Georgia and South Carolina. Cold high pressure centered along the New England coast provided cold air to the region, and waves of low pressure tracked northeast along the stationary front, producing freezing rain, sleet and snow.



The Charleston SC upper air sounding from Wednesday evening illustrated a classic freezing rain profile.



The visible satellite image from Wednesday afternoon showed an extensive, solid band of deep layered clouds which were producing precipitation across the region.



The regional radar from Wednesday evening depicted widespread precipitation over the Southeast. Across southern South Carolina and southeast Georgia, this precipitation was falling into below-freezing air at many locations, resulting in freezing rain and sleet.

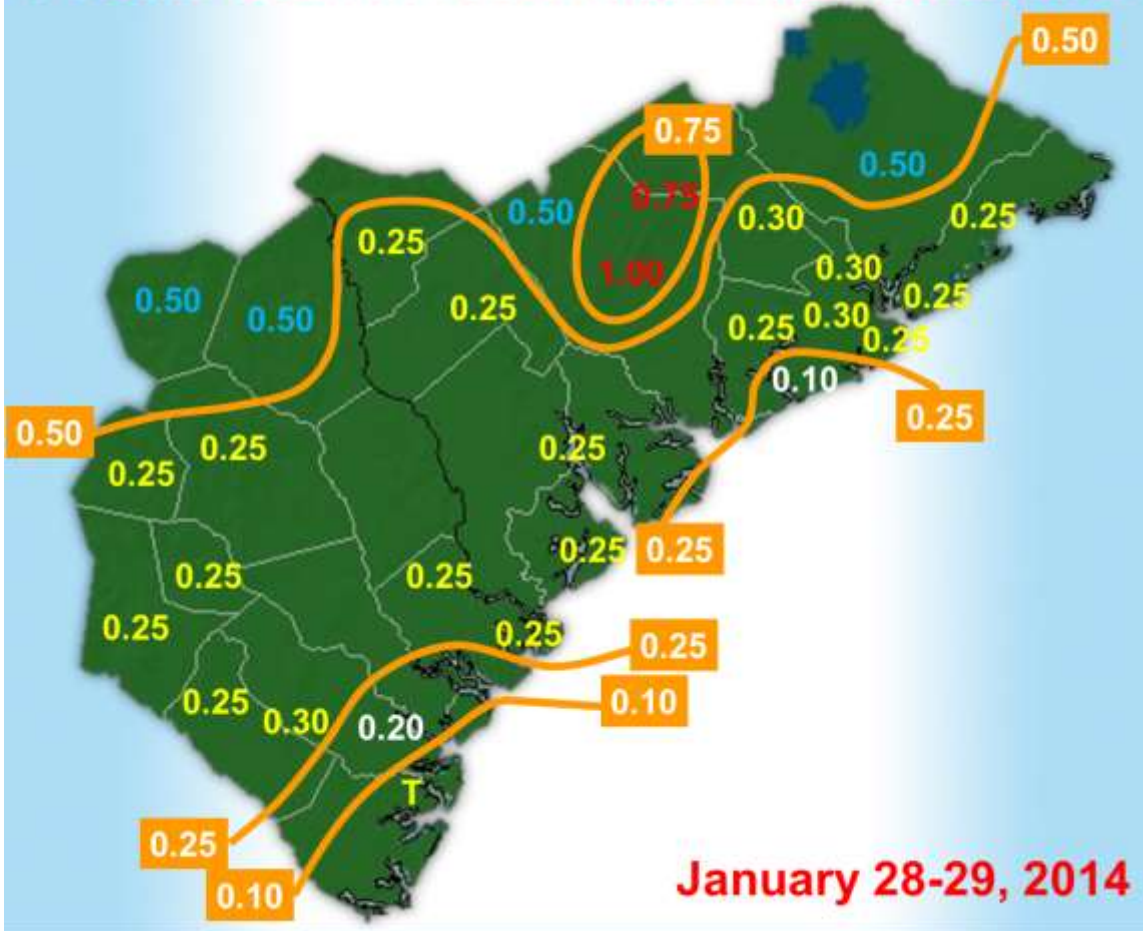


Downtown Charleston, SC



NATIONAL WEATHER SERVICE
NATIONAL OCEANIC AND ATMOSPHERIC ADMINISTRATION

Prelim Storm Total Ice Accumulations



January 28-29, 2014

Weather Forecast Office
Charleston, SC

weather.gov/chs @NWSCharlestonSC
US National Weather Service Charleston SC

GRAPHIC CREATED:
1/29/2014 1:25 PM



National Weather Service Office and Mount Pleasant SC

PUBLIC INFORMATION STATEMENT
 SPOTTER REPORTS
 NATIONAL WEATHER SERVICE CHARLESTON SC
 638 AM EST WED JAN 29 2014

THE FOLLOWING ARE UNOFFICIAL OBSERVATIONS TAKEN BY AUTOMATED SURFACE
 OBSERVATION SYSTEMS /ASOS/...FIRE WEATHER REMOTE AUTOMATED WEATHER
 STATIONS /RAWS/...GEORGIA AUTOMATED MONITORING NETWORK STATIONS
 /GAEMN/...NOAA/S NATIONAL ESTUARINE RESEARCH RESERVE SYSTEM
 OBSERVATIONS /NERR/...NATIONAL DATA BUOY CENTER LOCATIONS /NDBC/ AND
 OTHER QUALITY CONTROLLED SENSORS FROM ACROSS SOUTHEAST SOUTH
 CAROLINA
 AND SOUTHEAST GEORGIA.

*****STORM TOTAL SNOWFALL*****

LOCATION	STORM TOTAL SNOWFALL /INCHES/	TIME/DATE OF MEASUREMENT	COMMENTS
GEORGIA			
...EFFINGHAM COUNTY...			
2 SSW MARLOW	T	800 PM 1/28	AMATEUR RADIO
...LIBERTY COUNTY...			
4 NW WALTHOURVILLE	T	802 PM 1/28	AMATEUR RADIO
...LONG COUNTY...			
5 W DONALD	T	737 PM 1/28	AMATEUR RADIO
...SCREVEN COUNTY...			
SYLVANIA	T	810 PM 1/28	AMATEUR RADIO
SOUTH CAROLINA			
...ALLENDALE COUNTY...			
1 S SEIGLING	1.0	1150 PM 1/28	AMATEUR RADIO
...CHARLESTON COUNTY...			
1 SSW BOONE HALL PLA	0.2	1008 PM 1/28	AMATEUR RADIO
...COLLETON COUNTY...			
5 NW WALTERBORO	T	757 PM 1/28	AMATEUR RADIO
...DORCHESTER COUNTY...			
1 ENE DORCHESTER	0.5	1108 PM 1/28	AMATEUR RADIO
SUMMERVILLE	0.2	853 PM 1/28	TRAINED SPOTTER
1 WNW LADSON	0.2	1112 PM 1/28	TRAINED SPOTTER
GIVHANS	0.1	1010 PM 1/28	AMATEUR RADIO
5 NNE INDIAN FIELD	T	725 PM 1/28	SOCIAL MEDIA
...HAMPTON COUNTY...			
2 S BRUNSON	T	807 PM 1/28	AMATEUR RADIO

*****STORM TOTAL ICE*****

LOCATION	STORM TOTAL ICE /INCHES/	TIME/DATE OF MEASUREMENT	COMMENTS
GEORGIA			
...BULLOCH COUNTY... STATESBORO	T	654 PM 1/28	TRAINED SPOTTER
...CHATHAM COUNTY... 2 WNW SKIDAWAY ISLAN THUNDERBOLT PORT WENTWORTH	T T T	1011 PM 1/28 831 PM 1/28 551 AM 1/29	EMERGENCY MNGR LAW ENFORCEMENT EMERGENCY MNGR
...JENKINS COUNTY... MILLEN	T	728 PM 1/28	911 CALL CENTER
...LIBERTY COUNTY... 18 N LUDOWICI	0.25	558 AM 1/29	AMATEUR RADIO
...LONG COUNTY... 4 NW DONALD	0.25	606 AM 1/29	AMATEUR RADIO
...SCREVEN COUNTY... SYLVANIA	T	730 PM 1/28	911 CALL CENTER
SOUTH CAROLINA			
...ALLENDALE COUNTY... ALLENDALE	0.25	1155 PM 1/28	911 CALL CENTER
...BERKELEY COUNTY... GOOSE CREEK 1 ENE CROWFIELD PLAN CAINHOY	0.10 0.10 T	135 AM 1/29 849 PM 1/28 842 PM 1/28	SOCIAL MEDIA AMATEUR RADIO BROADCAST MEDIA
...CHARLESTON COUNTY... 3 SSW SHADOWMOSS 2 W MOUNT PLEASANT 2 SE CAINHOY	0.30 0.25 0.20	506 AM 1/29 636 AM 1/29 750 PM 1/28	NWS EMPLOYEE BROADCAST MEDIA IN THE DUNES WEST
AREA. LADSON 2 S CHARLES TOWNE LA 2 W DON HOLT BRIDGE 1 ESE CHARLESTON AIR	0.10 0.10 0.10 T	615 PM 1/28 625 PM 1/28 456 AM 1/29 835 PM 1/28	TRAINED SPOTTER AMATEUR RADIO PUBLIC NWS OFFICE
...COLLETON COUNTY... ROUND O	0.10	851 PM 1/28	OFF OF MERRICK DRIVE.
...DORCHESTER COUNTY... 3 N MIDDLETON PLACE 2 SE KNIGHTSVILLE	0.30 0.25	1127 PM 1/28 945 PM 1/28	SOCIAL MEDIA TRAINED SPOTTER

SUMMERVILLE	0.25	1145 PM	1/28	TRAINED SPOTTER
3 SSW LADSON	0.20	742 PM	1/28	PUBLIC
2 SSE SUMMERVILLE	0.10	838 PM	1/28	AMATEUR RADIO
3 S SUMMERVILLE	0.10	610 PM	1/28	TRAINED SPOTTER
1 ENE KNIGHTSVILLE	0.10	635 PM	1/28	AMATEUR RADIO
5 NNE INDIAN FIELD	T	659 PM	1/28	SOCIAL MEDIA



Hanahan, SC