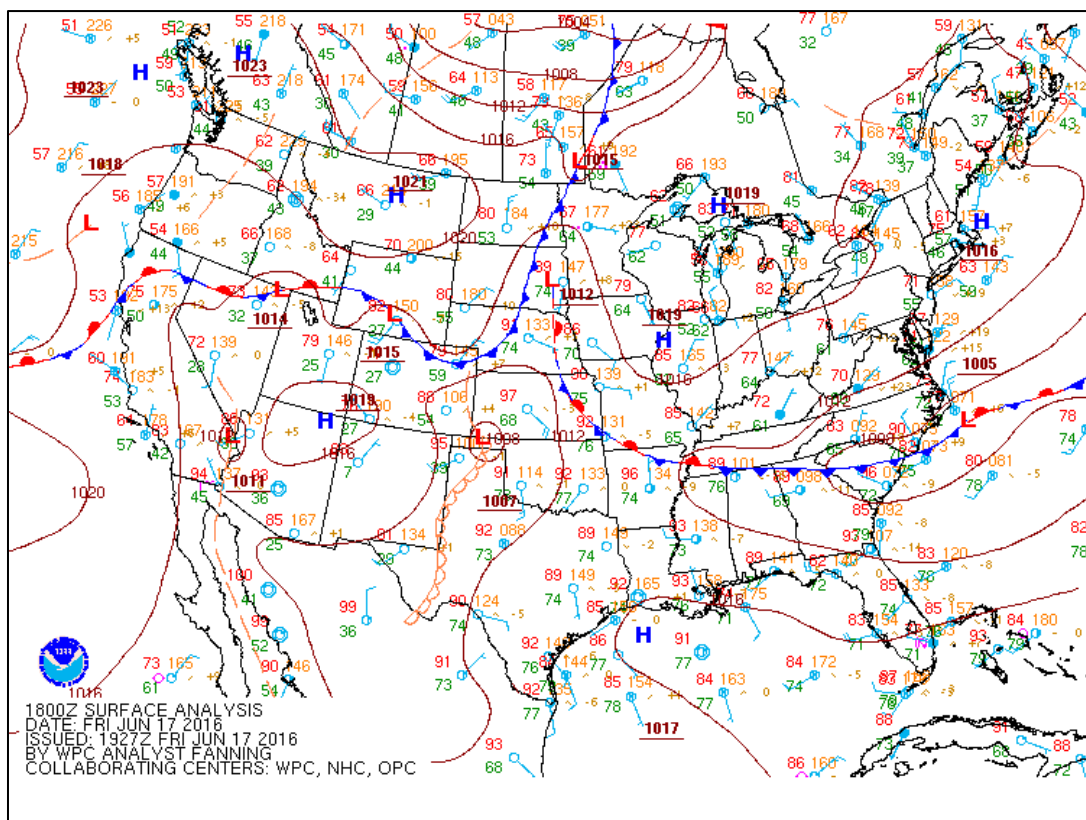
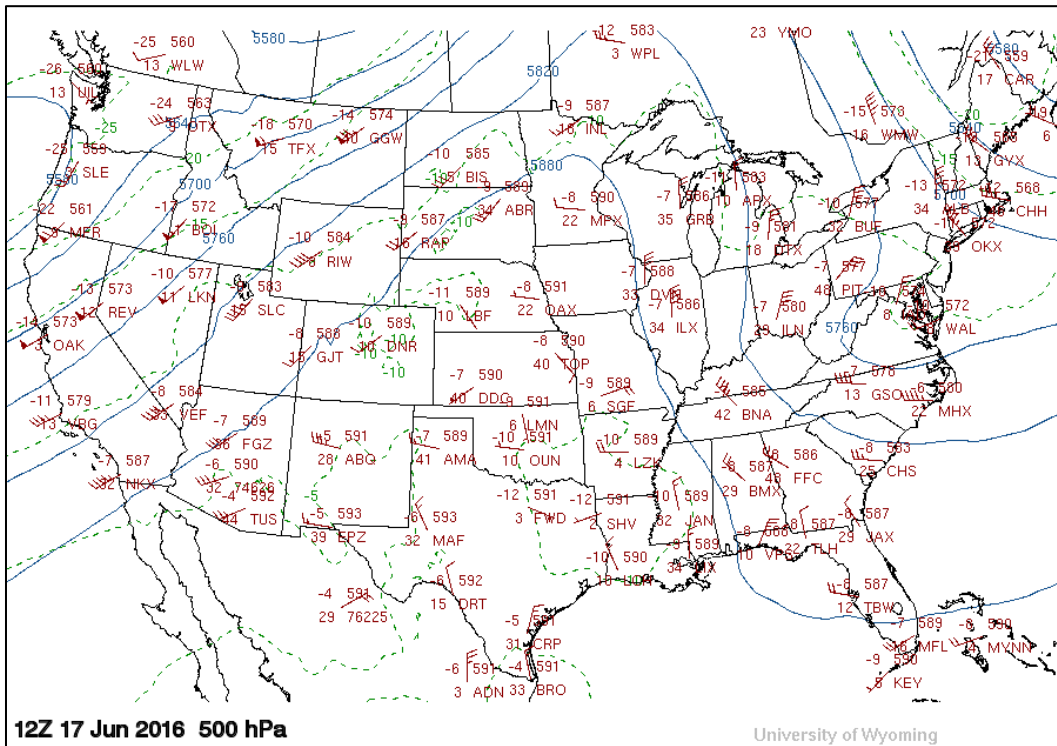
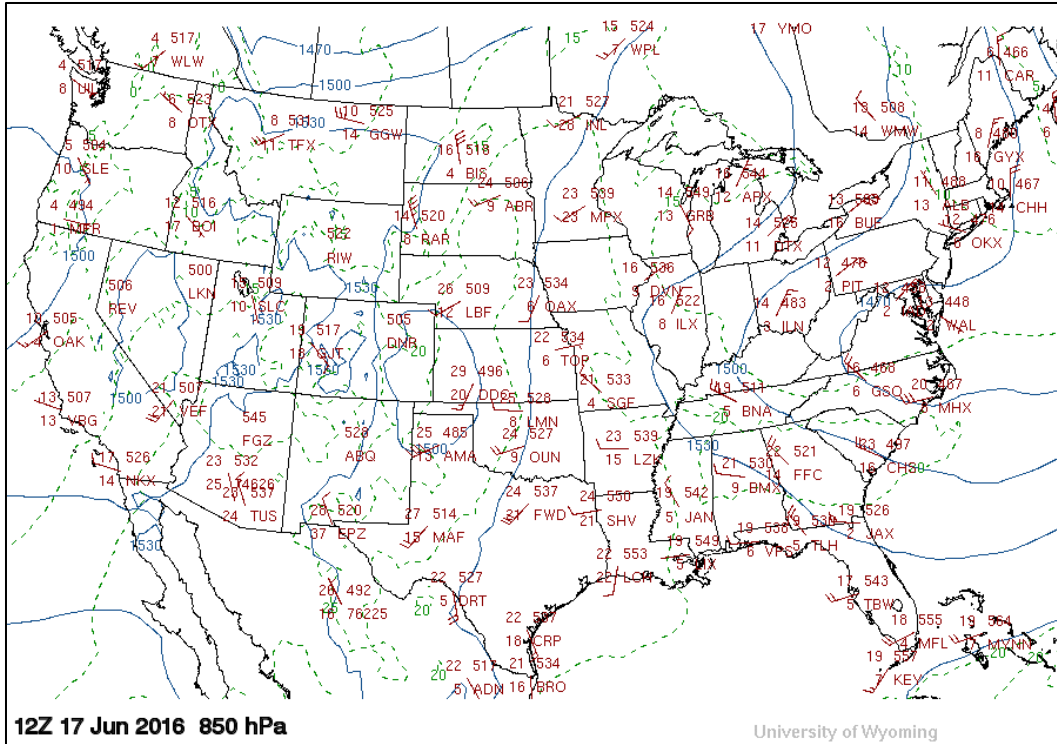


# June 17, 2016 Severe Thunderstorm Outbreak

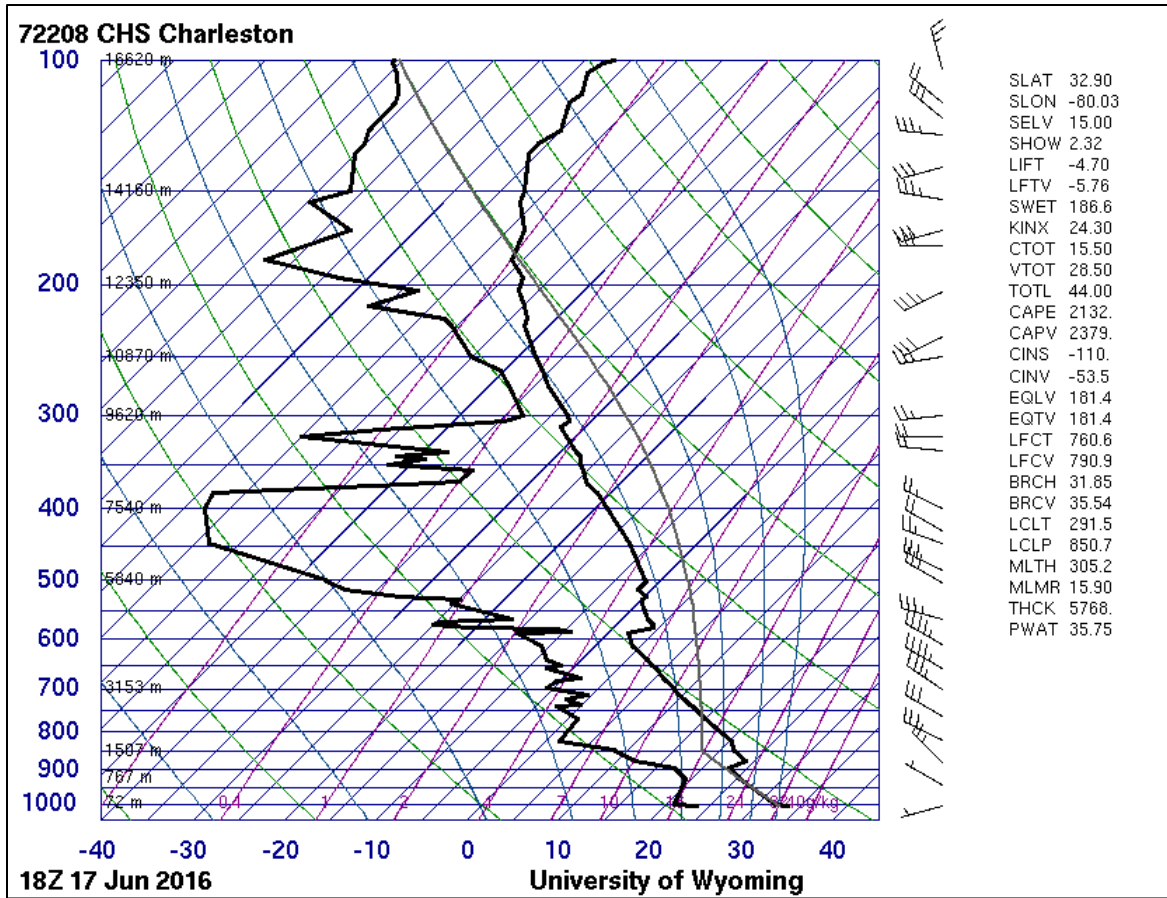
Temperatures mainly in the mid to upper 90s and dewpoints in the 70s supported extreme instability featuring surface-based convective available potential energy (CAPE) as high as 5000-6000 J/kg, lifted index values as low as -10 and downdraft CAPE 1500-1700 J/kg. Thunderstorms developed during the early afternoon north of the NWS Charleston County Warning Area (CWA) along a mesoscale boundary which preceded a strong cold front, aided by forcing for ascent provided by a positively-tilted upper trough approaching from the northwest. These thunderstorms evolved into a severe quasi-linear convective system (QLCS – also known as a squall line) which marched south through the entire CWA and produced over 80 reports of wind damage. 16 Severe Thunderstorm Warnings covered the entire CWA, and our office received damage reports from almost every county. Thousands of trees were blown down, numerous structures were damaged, and 4 injuries were reported. In terms of the number of damage reports, this was the most extensive severe weather event in our area since at least 2006.



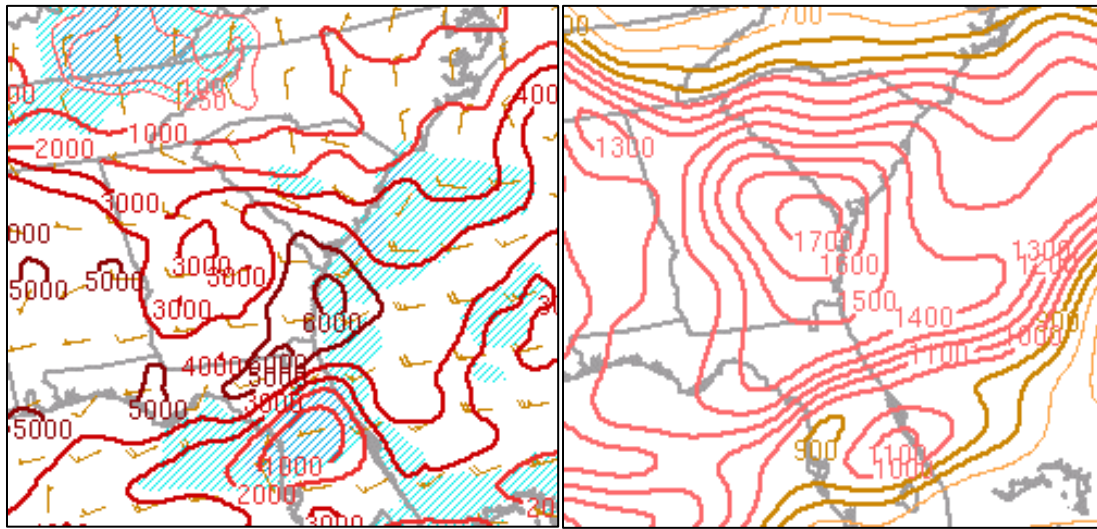
*The WPC surface analysis for 18Z (2 pm EDT) depicting an unseasonably strong cold front advancing through the Southeast. The damaging QLCS developed within the extremely unstable air mass ahead of this cold front.*



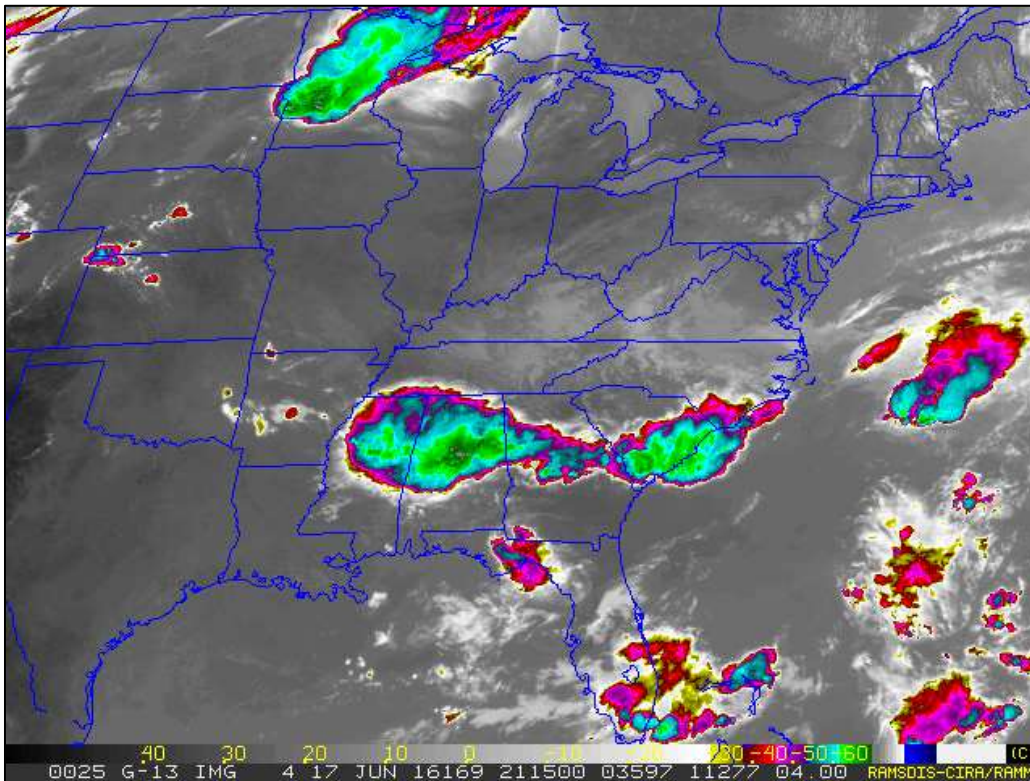
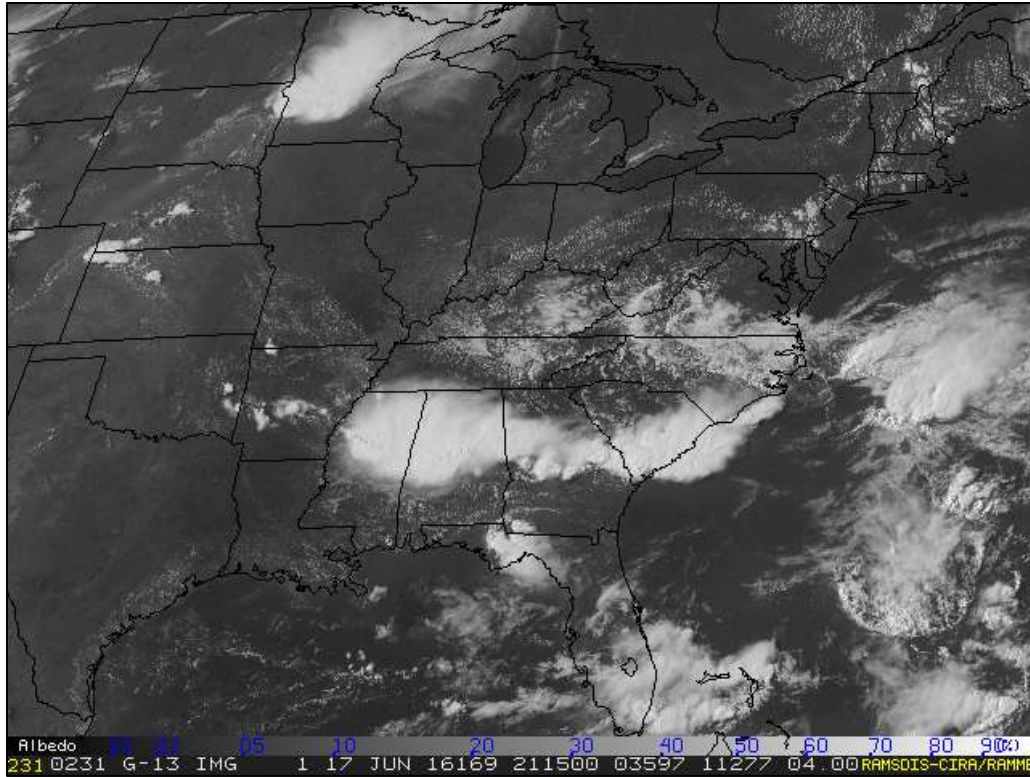
*Friday morning 850 mb and 500 mb observations and analysis. A deep upper trough and associated cyclonic flow contributed to organized thunderstorm development.*



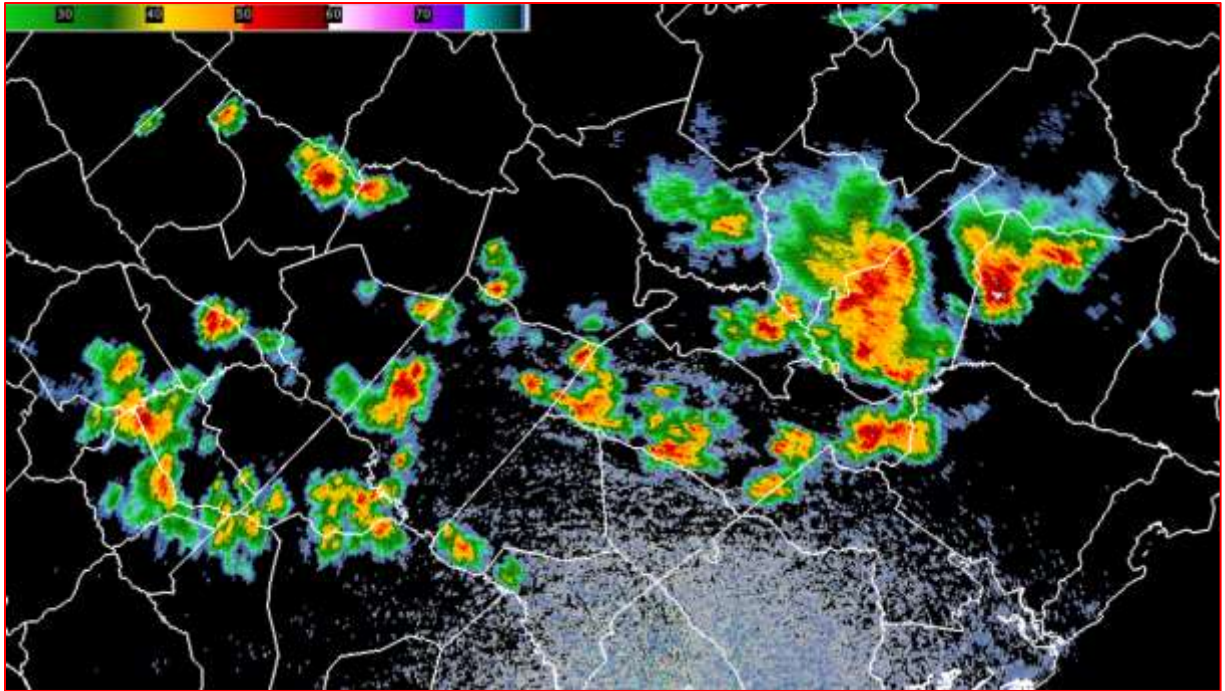
The special 18Z sounding launched from WFO CHS which sampled the pre-storm environment primed for widespread severe weather.



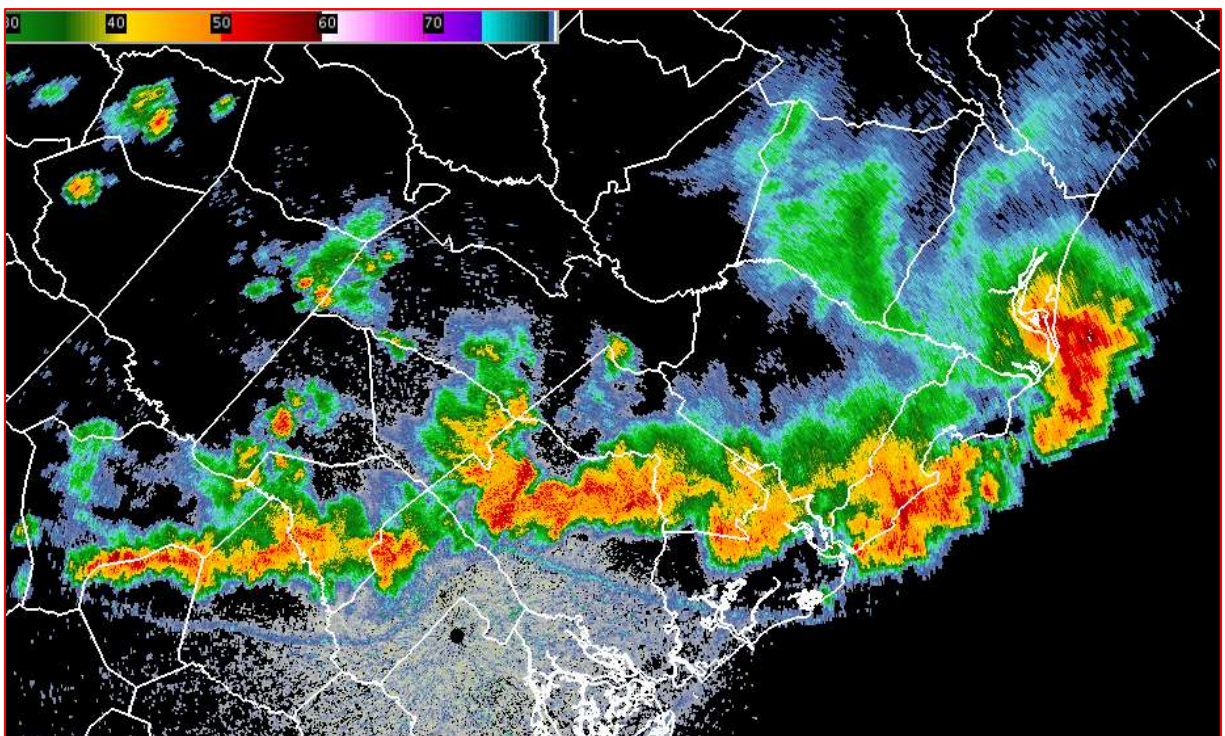
2 pm EDT SPC mesoanalysis depicting surface-based CAPE of 3000-6000 J/kg (left) and downdraft CAPE of 1400-1700 J/kg (right), more than sufficient for widespread severe weather.



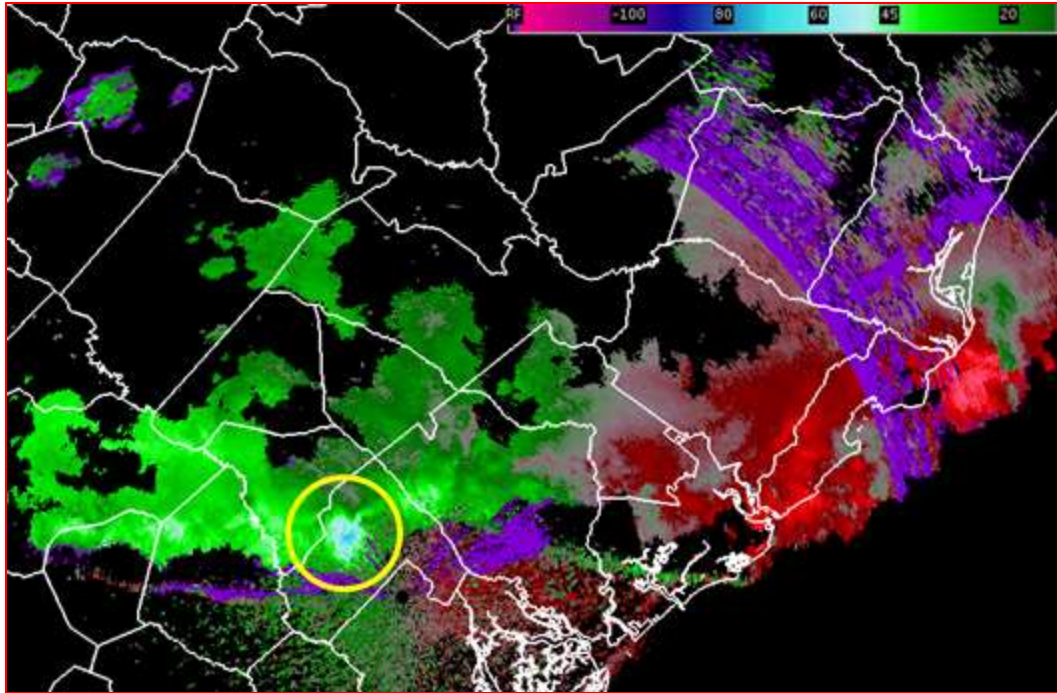
*GOES 13 visible (top) and infrared (bottom) satellite imagery from 2115Z (515 pm EDT) when the widespread severe weather event was well underway.*



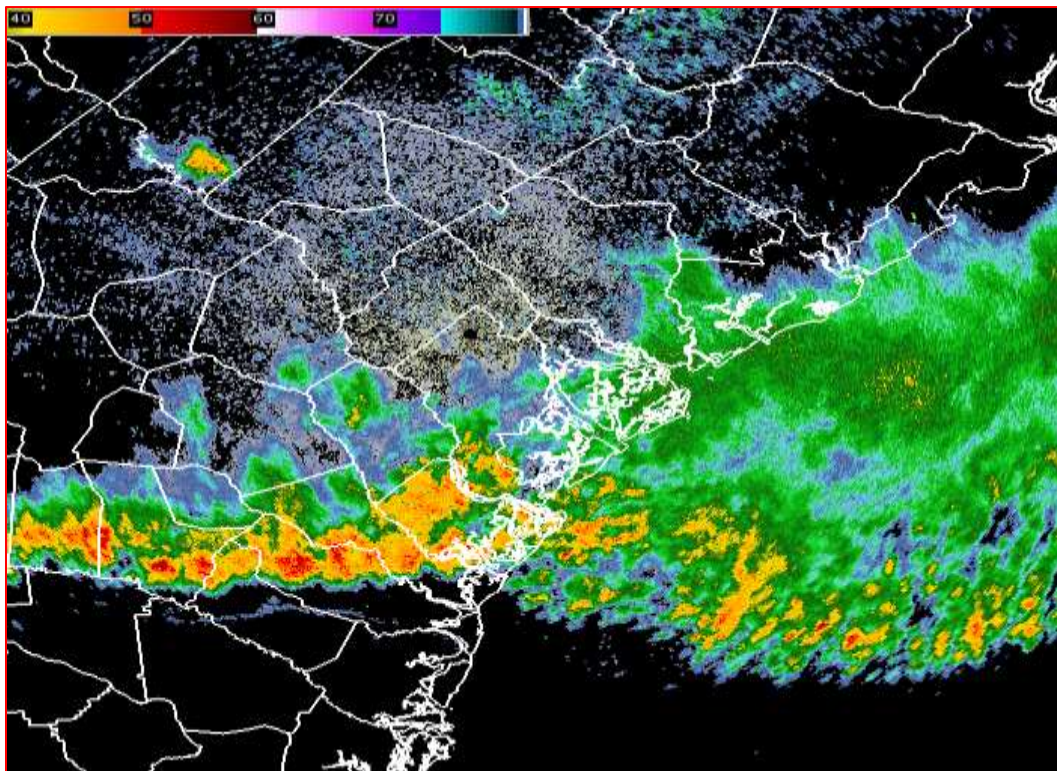
*KCLX reflectivity just before 3 pm EDT depicting organizing thunderstorms entering the CWA.*



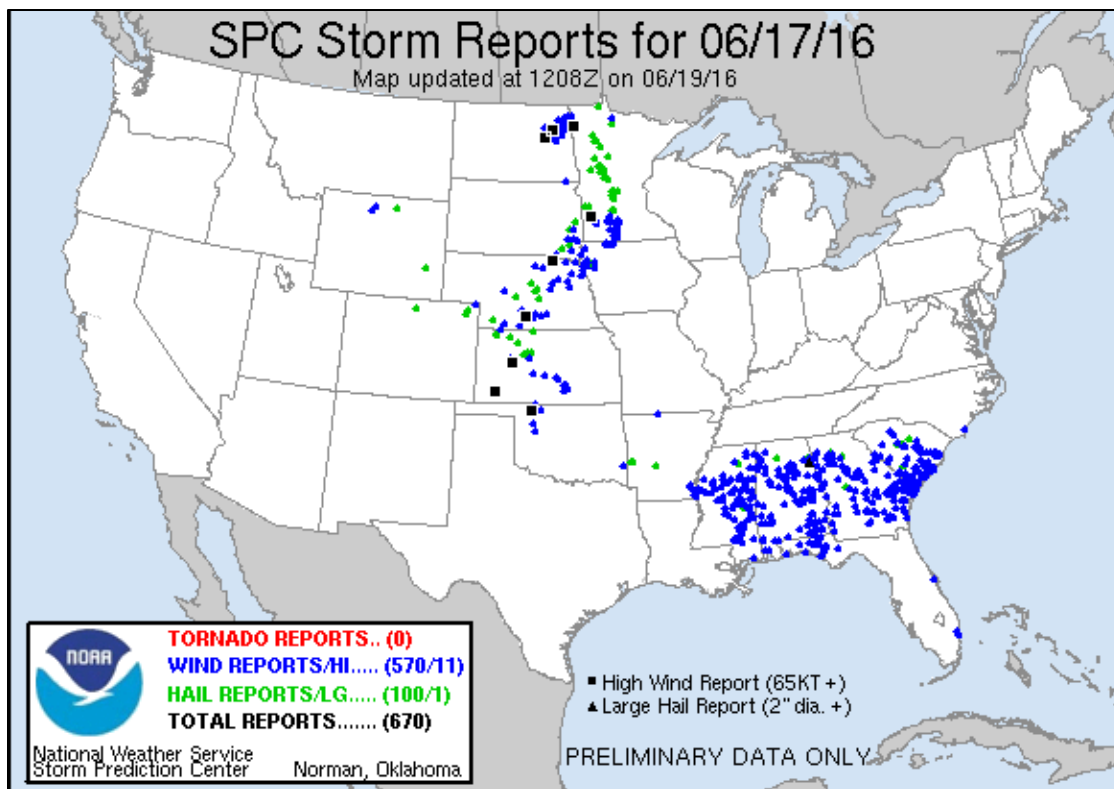
*KCLX reflectivity just before 4:30 pm EDT depicting organized, damaging thunderstorms advancing south through the CWA.*



*KCLX base velocity just before 430 pm EDT depicting very strong winds produced by the QLCS. Note the pocket of inbound velocities exceeding 70 knots (dark blue - circled) NW of the radar.*



*KCLX reflectivity just before 7 pm EDT depicting the line of damaging thunderstorms continuing to march south through southeast Georgia.*



*SPC plot of severe weather reports for June 17, 2016.*

PRELIMINARY LOCAL STORM REPORT...SUMMARY  
NATIONAL WEATHER SERVICE CHARLESTON SC  
942 PM EDT SUN JUN 19 2016

..TIME...	...EVENT...	...CITY LOCATION...	...LAT.LON...
..DATE...	....MAG....	..COUNTY LOCATION..ST..	...SOURCE....
..REMARKS..			
0308 PM 06/17/2016	TSTM WND DMG	8 WSW CROSS BERKELEY	33.27N 80.27W SC LAW ENFORCEMENT
SC STATE HWY PATROL REPORTS TREES DOWN ALONG SC 311 NEAR THE INTERSECTIONS OF OLD COMMUNITY RD AND MUDVILLE RD			
0320 PM 06/17/2016	TSTM WND DMG	9 SW CROSS BERKELEY	33.24N 80.26W SC LAW ENFORCEMENT
SC STATE HWY PATROL REPORTS TREE DOWN IN ROADWAY AT THE INTERSECTION OF POPLAR HILL DR AND RUFFACRE LN			

0337 PM HAIL 6 N SANGAREE 33.11N 80.11W  
06/17/2016 E1.00 INCH BERKELEY SC SOCIAL MEDIA

TWITTER REPORT OF QUARTER SIZE HAIL IN CANE BAY AREA

0338 PM HAIL 3 NE SANGAREE 33.06N 80.09W  
06/17/2016 M1.00 INCH BERKELEY SC TRAINED SPOTTER

0338 PM TSTM WND DMG 3 SSE OLD SANTEE CANAL 33.16N 79.96W  
06/17/2016 BERKELEY SC SOCIAL MEDIA

TREE IN ROAD NEAR THE INTERSECTION OF DR. EVANS ROAD  
AND VANDROSS ROAD.

0338 PM TSTM WND DMG 3 SSE OLD SANTEE CANAL 33.16N 79.96W  
06/17/2016 BERKELEY SC LAW ENFORCEMENT

SC STATE HWY PATROL REPORTS A TREE DOWN NEAR THE 1500  
BLOCK OF DR EVANS RD. TIME ESTIMATED FROM RADAR

0344 PM HAIL 1 N CROWFIELD PLANTATIO 33.04N 80.06W  
06/17/2016 E1.00 INCH BERKELEY SC PUBLIC

QUARTER SIZE HAIL REPORTED OFF HWY 176

0347 PM TSTM WND DMG 7 NE GOOSE CREEK 33.06N 79.96W  
06/17/2016 BERKELEY SC PUBLIC

LARGE TREE DOWN AT CYPRESS GARDENS RD AND BUSHY PARK RD

0347 PM TSTM WND DMG 6 E CANADYS 33.05N 80.52W  
06/17/2016 COLLETON SC LAW ENFORCEMENT

SC STATE HWY PATROL REPORTS A TREE DOWN ON AUGUSTA HWY  
NEAR SIDNEYS RD. TIME ESTIMATED FROM RADAR

0352 PM TSTM WND DMG 3 SSW APPLETON 33.01N 81.38W  
06/17/2016 ALLENDALE SC 911 CALL CENTER

ALLENDALE CO WARNING POINT REPORTS TREES DOWN ON  
AUGUSTA HWY NEAR WASHOUT RD...HWY 3 NEAR BELDOCK...AND A  
LARGE TREE LIMB DOWN AT BAY ST E AND MEMORIAL AVE

0357 PM TSTM WND DMG SUMMERVILLE 33.02N 80.18W  
06/17/2016 DORCHESTER SC SOCIAL MEDIA

LARGE TREE BLOWN DOWN AND BLOCKING HICKORY STREET NEAR  
W. LUKE STREET. REPORT RECEIVED VIA TWITTER.

0402 PM TSTM WND DMG 1 W BURTONS FERRY LANDI 32.94N 81.53W  
06/17/2016 SCREVEN GA 911 CALL CENTER

SCREVEN COUNTY WARNING POINT REPORTS TREE DOWN ON  
BURTONS FERRY HWY BLOCKING ROADWAY.



0402 PM TSTM WND DMG 1 ENE WANDO 32.94N 79.82W  
06/17/2016 BERKELEY SC LAW ENFORCEMENT

SC STATE HIGHWAY PATROL REPORTS TREE DOWN IN ROADWAY AT THE INTERSECTION OF HALHWAY CREEK RD AND SC 41. TIME ESTIATED FROM RADAR

0406 PM TSTM WND DMG 4 S CANADYS 33.00N 80.62W  
06/17/2016 COLLETON SC LAW ENFORCEMENT

SC STATE HWY PATROL REPORTS A TREE DOWN IN THE ROADWAY NEAR THE INTERSECTION OF BURLINGTON RD AND CREEKBED LN. TIME ESTIMATED FROM RADAR

0406 PM TSTM WND DMG 4 S CANADYS 33.00N 80.63W  
06/17/2016 COLLETON SC 911 CALL CENTER

SC STATE HWY PATROL REPORTS TREE DOWN ON BURLINGTON RD NEAR THE INTERSECTION OF PLEASANT GROVE RD. TIME ESTIMATED FROM RADAR

0411 PM TSTM WND DMG 2 NW HANAHAN 32.94N 80.04W  
06/17/2016 CHARLESTON SC SOCIAL MEDIA

TREES BLOWN DOWN AND SNAPPED AT NORTHWOODS MALL. REPORT VIA TWITTER.

0414 PM TSTM WND DMG 3 ENE BOONE HALL PLANTA 32.87N 79.78W  
06/17/2016 CHARLESTON SC NWS EMPLOYEE

NWS EMPLOYEE REPORTS LARGE TREE DOWN NEAR THE TRAFFIC CIRCLE AT THE ENTRANCE TO PARK WEST SUBDIVISION

0416 PM TSTM WND DMG 3 ENE BOONE HALL PLANTA 32.87N 79.77W  
06/17/2016 CHARLESTON SC SOCIAL MEDIA

TREES DOWN AT CHARLESTON NATIONAL GOLF CLUB. REPORT VIA TWITTER.

0420 PM TSTM WND DMG 2 WSW WEST ASHLEY 32.79N 80.04W  
06/17/2016 CHARLESTON SC SOCIAL MEDIA

TREES BLOWN DOWN OVER WEST ASHLEY GREENWAY NEAR PARKDALE DRIVE. REPORT RECEIVED VIA TWITTER.

0420 PM TSTM WND DMG ISLE OF PALMS 32.79N 79.80W  
06/17/2016 CHARLESTON SC SOCIAL MEDIA

SEVERAL REPORTS OF TREES DOWN IN THE ISLE OF PALMS AND WILD DUNES AREA. REPORT RECEIVED VIA TWITTER.

0425 PM TSTM WND DMG 4 SE WALTERBORO 32.87N 80.61W  
06/17/2016 COLLETON SC 911 CALL CENTER

SC STATE HIGHWAY PATROL REPORTS TREE DOWN IN ROADWAY ON  
SC 64 NEAR RODEO DR. TIME ESTIAMTED FROM RADAR

0427 PM TSTM WND DMG 3 S COTTAGEVILLE 32.89N 80.48W  
06/17/2016 COLLETON SC NWS EMPLOYEE

NWS EMPLOYEE REPORTS NUMEROUS LARGE PINE TREES DOWN AT  
RESIDENCE

0430 PM TSTM WND DMG PERKINS 32.91N 81.95W  
06/17/2016 JENKINS GA LAW ENFORCEMENT

NUMEROUS TREES DOWN THROUGHOUT THE COMMUNITY OF  
PERKINS.

0430 PM TSTM WND DMG 4 SSW VARNVILLE 32.80N 81.12W  
06/17/2016 HAMPTON SC LAW ENFORCEMENT

SC STATE HWY PATROL REPORTS A TREE DOWN ON HICKORY HILL  
RD NEAR TWO SISTERS FERRY RD. TIME ESTIMATED FROM RADAR

0430 PM TSTM WND DMG 2 WSW VARNVILLE 32.84N 81.11W  
06/17/2016 HAMPTON SC LAW ENFORCEMENT

SC STATE HWY PATROL REPORTS A TREE DOWN ON POCOTALIGO  
RD NEAR THE HOLLY ST EXT INTERSECTION. TIME ESTIMATED  
FROM RADAR

0433 PM TSTM WND DMG HOLLYWOOD 32.74N 80.24W  
06/17/2016 CHARLESTON SC LAW ENFORCEMENT

CHARLESTON COUNTY SHERIFF OFFICE REPORTS A TREE DOWN AT  
THE INTERSECTION OF HIGHWAY 165 AND BALLPARK ROAD.

0435 PM TSTM WND DMG 1 WNW CHARLESTON 32.79N 79.96W  
06/17/2016 CHARLESTON SC PUBLIC

LARGE TREES BLOWN DOWN ONTO TWO CARS IN HAMPTON PARK.

0444 PM TSTM WND DMG 3 NNE GRAYS 32.71N 81.00W  
06/17/2016 JASPER SC LAW ENFORCEMENT

SC STATE HWY PATROL REPORTS A TREE IN THE ROADWAY NEAR  
THE INTERSECTION OF CAT BRANCH RD AND PINE BRANCH DR

0444 PM TSTM WND DMG 4 WSW HENDERSONVILLE 32.78N 80.80W  
06/17/2016 COLLETON SC SOCIAL MEDIA

SC STATE HWY PATROL REPORTS A TREE DOWN IN THE 7600  
BLOCK OF YEMASSEE HWY. TIME ESTIMATED FROM RADAR

0449 PM TSTM WND DMG 2 NE ROCKVILLE 32.61N 80.17W  
06/17/2016 CHARLESTON SC LAW ENFORCEMENT

SC STATE HWY PATROL REPORTS A TREE DOWN IN THE 2800  
BLOCK OF ROSEVILLE RD NEAR BUMBLEBEE RD. TIME ESTIAMTED  
FROM RADAR

0450 PM TSTM WND GST NEWINGTON 32.59N 81.51W  
06/17/2016 E60 MPH SCREVEN GA TRAINED SPOTTER

SPOTTER REPORTED 50 TO 60 MILE AN HOUR WINDS WITH  
OUTFLOW BOUNDARY MOVING THROUGH

0450 PM TSTM WND DMG 2 W YONGES ISLAND 32.69N 80.27W  
06/17/2016 CHARLESTON SC LAW ENFORCEMENT

ETHEL POST OFFICE ROAD CLOSED NEAR SMOAK ROAD DUE TO  
TREE OVER ROAD.

0451 PM TSTM WND DMG 2 NE ROCKVILLE 32.61N 80.17W  
06/17/2016 CHARLESTON SC LAW ENFORCEMENT

CHARLESTON COUNTY SHERIFF OFFICE REPORTS A TREE DOWN  
AND BLOCKING ROSEVILLE ROAD.

0458 PM TSTM WND DMG 1 SE GILLISONVILLE 32.60N 80.99W  
06/17/2016 JASPER SC LAW ENFORCEMENT

SC STATE HWY PATROL REPORTS A TREE DOWN IN THE ROADWAY  
AT THE CORNER OF US 278 AND MORGANDOLLAR RD. TIME  
ESTIMATED FROM RADAR

0458 PM TSTM WND DMG 4 NW EDISTO ISLAND 32.61N 80.35W  
06/17/2016 CHARLESTON SC LAW ENFORCEMENT

SC STATE HWY PATROL REPORTS TREE DOWN ON SC 174 NEAR  
RUSSELL CREEK RD. TIME ESTIAMTED FROM RADAR

0506 PM TSTM WND DMG 2 W YONGES ISLAND 32.69N 80.27W  
06/17/2016 CHARLESTON SC LAW ENFORCEMENT

CHARLESTON COUNTY SHERIFF OFFICE REPORTS A TREE DOWN  
AND BLOCKING ROAD AT INTERSECTION OF SMOAK ROAD AND  
ETHEL POST OFFICE ROAD.

0510 PM TSTM WND DMG EDISTO ISLAND 32.56N 80.30W  
06/17/2016 CHARLESTON SC BROADCAST MEDIA

TREES DOWN THROUGHOUT EDISTO ISLAND.

0513 PM TSTM WND DMG RIDGELAND 32.48N 80.99W  
06/17/2016 JASPER SC LAW ENFORCEMENT

SC STATE HWY PATROL REPORTS TREE DOWN AT THE  
INTERSECTION OF WOOD DUCK ST AND SISTERS FERRY RD. TIME  
ESTIMATED FROM RADAR

0513 PM TSTM WND DMG GRAHAMVILLE 32.48N 80.96W  
06/17/2016 JASPER SC EMERGENCY MNGR

TREE IN HOUSE. TIME ESTIMATED BASED ON RADAR.

0515 PM TSTM WND GST 2 NE LEMON ISLAND 32.38N 80.79W  
06/17/2016 E70 MPH BEAUFORT SC TRAINED SPOTTER

SPOTTER REPORTED ESTIMATED 60 TO 70 MILE PER HOUR WINDS  
AND TWO BRIEF WATERSPOUTS SEEN FROM THE BROAD RIVER  
BRIDGE IN BEAUFORT COUNTY

0515 PM WATER SPOUT 2 NE LEMON ISLAND 32.38N 80.79W  
06/17/2016 BEAUFORT SC TRAINED SPOTTER

SPOTTER REPORTED ESTIMATED 60 TO 70 MILE PER HOUR WINDS  
AND TWO BRIEF WATERSPOUTS SEEN FROM THE BROAD RIVER  
BRIDGE IN BEAUFORT COUNTY

0515 PM TSTM WND GST 5 SW ADAMS RUN 32.66N 80.40W  
06/17/2016 M60 MPH CHARLESTON SC MESONET

ACE BASIN RAWS

0517 PM TSTM WND GST 2 WNW EDISTO ISLAND 32.57N 80.33W  
06/17/2016 E70 MPH CHARLESTON SC NWS EMPLOYEE

RETIRED NWS EMPLOYEE ESTIMATED WINDS 60-65 MPH WITH A  
FEW GUSTS NEAR 70 MPH.

0517 PM TSTM WND DMG 2 WNW EDISTO ISLAND 32.57N 80.33W  
06/17/2016 CHARLESTON SC NWS EMPLOYEE

RETIRED NWS EMPLOYEE REPORTED TREES DOWN.

0517 PM TSTM WND DMG 2 WNW CLYO 32.49N 81.30W  
06/17/2016 EFFINGHAM GA 911 CALL CENTER

EFFINGHAM COUNTY WARNING POINT REPORTS A TREE DOWN AT  
THE INTERSECTION OF MORGAN CIRCLE AND OLLIE MORGAN RD.  
TIME ESTIMATED FROM RADAR

0522 PM TSTM WND GST 2 NNW MARINE CORPS AIR 32.50N 80.72W  
06/17/2016 E58 MPH BEAUFORT SC TRAINED SPOTTER

SPOTTER REPORTED WIND GUST OF 58 MPH NEAR THE NORTH END  
OF THE BEAUFORT MCAS

0522 PM TSTM WND DMG 4 ESE STILSON 32.31N 81.49W  
06/17/2016 BULLOCH GA 911 CALL CENTER

BULLOCH COUNTY WARNING POINT REPORTS A TREE DOWN AT THE  
INTERSECTION OF OLD RIVER RD AND 119 CONNECTOR. TIME  
ESTIMATED FROM RADAR

0522 PM TSTM WND DMG 3 WSW BEAUFORT 32.42N 80.73W  
06/17/2016 BEAUFORT SC TRAINED SPOTTER

SPOTTER REPORTS TWO TREES DOWN AT OLD JERICHO RD AND  
HWY 21

0522 PM TSTM WND DMG 2 NNE LADYS ISLAND 32.47N 80.63W  
06/17/2016 BEAUFORT SC EMERGENCY MNGR

BEAUFORT COUNTY EM REPORTS TREES DOWN ON HOUSES IN THE  
600 BLOCK OF SAMS POINT RD...20 BLOCK OF SANGSTER  
RD...AND TUCKER AVE ON LADYS ISLAND

0527 PM TSTM WND DMG 3 WSW BEAUFORT 32.42N 80.73W  
06/17/2016 BEAUFORT SC TRAINED SPOTTER

TREE DOWN ON RESIDENCE ALONG OLD JERICHO ROAD NEAR US  
21.

0527 PM TSTM WND DMG 2 NNE STILLWELL 32.40N 81.24W  
06/17/2016 EFFINGHAM GA 911 CALL CENTER

EFFINGHAM COUNTY WARNING POINT REPORTS A TREE DOWN NEAR  
THE INTERSECTION OF STILLWELL CLYO RD AND WILSON RD.  
TIME ESTIMATED FROM RADAR

0527 PM TSTM WND DMG BEAUFORT 32.44N 80.68W  
06/17/2016 BEAUFORT SC LAW ENFORCEMENT

TREES DOWN THROUGHOUT THE CITY OF BEAUFORT. SEVEREAL  
TREES DOWN ON HOUSES ON TEKOA LN AND ON CARS ON CENTER  
DR EAST...RIBAUT RD...BOUNDARY ST...AND N HERMITAGE.

0527 PM TSTM WND DMG LEMON ISLAND 32.37N 80.81W  
06/17/2016 BEAUFORT SC TRAINED SPOTTER

TREES DOWN ON LEMON ISLAND. TIME ESTIMATED BASED ON  
RADAR.

0531 PM TSTM WND DMG HARDEEVILLE 32.28N 81.08W  
06/17/2016 JASPER SC EMERGENCY MNGR

TREE IN HOUSE. TIME ESTIMATED BASED ON RADAR.

0531 PM TSTM WND DMG PORT ROYAL 32.38N 80.69W  
06/17/2016 BEAUFORT SC LAW ENFORCEMENT

TREE THROUGH ROOF OF PORT ROYAL ELEMENTARY SCHOOL.  
TREES ALSO FELL ONTO RESIDENCES ON RIBAUT RD AND  
RIDENOUR PL IN PORT ROYAL. TIME ESTIMATED BASED ON  
RADAR.

0535 PM TSTM WND GST BEAUFORT COUNTY AIRPORT 32.41N 80.63W  
06/17/2016 M67 MPH BEAUFORT SC AWOS

0536 PM TSTM WND DMG 1 WSW HILTON HEAD AIRPO 32.22N 80.71W  
06/17/2016 BEAUFORT SC PUBLIC

MULTIPLE LARGE TREES DOWN ALONG BUSINESS 278 IN THE  
NORTHERN PORTION OF HILTON HEAD ISLAND

0541 PM TSTM WND DMG 2 E MIDDLEGROUND 32.54N 81.79W  
06/17/2016 BULLOCH GA 911 CALL CENTER

BULLOCH COUNTY WARNING POINT REPORTS A TREE DOWN ON  
LAKE VIEW RD JUST NORTH OF CLITO RD. TIME ESTIMATED BY  
RADAR

0541 PM TSTM WND DMG 1 WSW HILTON HEAD AIRPO 32.22N 80.72W  
06/17/2016 BEAUFORT SC EMERGENCY MNGR

REPORTS OF AT LEAST 12 TREES DOWN ACROSS NORTHERN  
PORTIONS OF HILTON HEAD ISLAND...SOME ACROSS POWERLINES.  
INCLUDES A TREE DOWN ON A VEHICLE NEAR THE INTERSECTION  
OF WILLIAM HILTON PKWY AND INDIGO RUN DR. ADDITIONAL  
DAMAGE TO A STRUCTURE OCCURED IN THE 10 BLOCK OF SUNDAY  
FORD DR. TIME OF INCIDENTS RANGES FROM 1741 TO 1755 EDT  
AND IS ESTIMATED FROM RADAR.

0541 PM TSTM WND DMG BLUFFTON 32.24N 80.86W  
06/17/2016 BEAUFORT SC LAW ENFORCEMENT

NUMEROUS TREES REPORTED DOWN AROUND BLUFFTON.

0546 PM TSTM WND DMG 3 NW HILTON HEAD ISLAND 32.22N 80.77W  
06/17/2016 BEAUFORT SC LAW ENFORCEMENT

\*\*\* 2 INJ \*\*\* 2 INJURED WHEN A LARGE TREE FELL ON THEM  
IN THE 40 BLOCK OF JENKINS RD. TIME ESTIMATED BASED ON  
RADAR.

0547 PM TSTM WND DMG 3 W BELLINGER HILL AREA 32.15N 81.05W  
06/17/2016 JASPER SC LAW ENFORCEMENT

SC STATE HWY PATROL REPORTS TREE DOWN ACROSS THE ROAD  
AT THE INTERSECTION OF S OKATIE HWY AND US 17. TIME  
ESTIAMTED FROM RADAR

0548 PM TSTM WND DMG 1 WNW FOREST BEACH 32.16N 80.76W  
06/17/2016 BEAUFORT SC EMERGENCY MNGR

REPORTS OF AT LEAST 9 TREES DOWN ACROSS THE SOUTHERN PORTION OF HILTON HEAD ISLAND...INCLUDING SOME ACROSS POWERLINES. ADDITIONALLY... STRUCTURE DAMAGE OCCURRED IN THE 20 BLOCK OF NEW ORLEANS RD... AS WELL AS A STRUCTURE FIRE THAT MAY BE LIGHTNING RELATED IN THE 20 BLOCK OF BATEAU RD. TIME OF INCIDENTS RANGES FROM 1748 TO 1803 EDT AND IS ESTIMATED BASED ON RADAR.

0550 PM TSTM WND DMG DENMARK 32.29N 81.73W  
06/17/2016 BULLOCH GA 911 CALL CENTER

BULLOCK COUNTY WARNING POINT REPORTS A TREE DOWN ON GW OLIVER RD. TIME ESTIMATED FROM RADAR

0559 PM TSTM WND DMG 5 ENE STATESBORO 32.46N 81.71W  
06/17/2016 BULLOCH GA 911 CALL CENTER

BULLOCH COUNTY WARNING POINT REPORTS A TREE DOWN NEAR THE INTERSECTION OF HWY 24 AND LEON NEWSOME RD. TIME ESTIMATED FROM RADAR

0600 PM TSTM WND DMG 3 SSW PULASKI 32.35N 81.97W  
06/17/2016 CANDLER GA EMERGENCY MNGR

\*\*\* 2 INJ \*\*\* NUMEROUS TREES DOWN. 3 RVS TURNED OVER WITH MULTIPLE... MINOR INJURIES ALONG I-26 JUST BEFORE MILE MARKER 111. NUMBER OF INJURIES 2.

0604 PM TSTM WND DMG 1 SSW GARDEN CITY 32.09N 81.18W  
06/17/2016 CHATHAM GA LAW ENFORCEMENT

GARDEN CITY POLICE REPORT A TREE DOWN AND BLOCKING HIGHWAY 80 NEAR TALMADGE AVENUE AND GRIFFIN AVENUE.

0606 PM TSTM WND GST 3 WNW FORT SCREVEN 32.03N 80.90W  
06/17/2016 M61 MPH CHATHAM GA TIDE GAGE

MEASURED AT NOS TIDE GAGE AT FORT PULASKI.

0607 PM TSTM WND DMG 2 WNW COBBTOWN 32.29N 82.17W  
06/17/2016 TATTNALL GA 911 CALL CENTER

TREES DOWN ON BILL SIKES ROAD.

0609 PM TSTM WND DMG 1 ESE REGISTER 32.36N 81.86W  
06/17/2016 BULLOCH GA 911 CALL CENTER

BULLOCH COUNTY WARNING POINT REPORTS A TREE DOWN ON HWY 46. TIME ESTIAMTED FROM RADAR

0609 PM TSTM WND DMG 1 SE GARDEN CITY 32.09N 81.16W  
06/17/2016 CHATHAM GA SOCIAL MEDIA

HIGHWAY 80 CLOSED NEAR CHATHAM PARKWAY DUE TO A LARGE  
TREE DOWN.

0609 PM TSTM WND DMG COBBTOWN 32.28N 82.14W  
06/17/2016 TATTNALL GA 911 CALL CENTER

TREES DOWN ON HIGHWAY 152.

0610 PM TSTM WND DMG 1 NE WILMINGTON ISLAND 32.02N 80.97W  
06/17/2016 CHATHAM GA 911 CALL CENTER

2 TREES DOWN IN BACK YARD OF A RESIDENCE ON LONG BOAT  
PLACE ON WILMINGTON ISLAND

0614 PM TSTM WND DMG 2 SSE MARLOW 32.25N 81.38W  
06/17/2016 EFFINGHAM GA 911 CALL CENTER

EFFINGHAM COUNTY WARNING POINT REPORTS TREE DOWN ON GA  
17 NEAR COURHOUSE RD. TIME ESTIMATED FROM RADAR

0618 PM TSTM WND DMG 2 WNW DAISY 32.16N 81.87W  
06/17/2016 EVANS GA 911 CALL CENTER

EVANS COUNTY WARNING POINT REPORTS A TREE DOWN ON SIMS  
BROTHERS RD NEAR HWY 280. TIME ESTIMATED FROM RADAR

0623 PM TSTM WND DMG COLLINS 32.18N 82.11W  
06/17/2016 TATTNALL GA 911 CALL CENTER

TREES DOWN ON CHURCH STREET.

0627 PM TSTM WND DMG 4 NNE MIDWAY 32.09N 81.86W  
06/17/2016 EVANS GA 911 CALL CENTER

EVANS COUNTY WARNING POINT REPORTS A TREE DOWN ON  
CHARLIE TODD RD. TIME ESTIMATED FROM RADAR

0632 PM TSTM WND DMG 5 SSW DAISY 32.09N 81.85W  
06/17/2016 EVANS GA 911 CALL CENTER

EVANS COUNTRY WARNING POINT REPORTS A TREE DWON NEAR  
THE INTERSECTION OF HWY 129 AND HWY 250. TIME ESTIMATED  
FROM RADAR

0648 PM TSTM WND DMG 1 NE GLENNVILLE 31.94N 81.92W  
06/17/2016 TATTNALL GA 911 CALL CENTER

TREES DOWN ON RAILROAD STREET.



0650 PM TSTM WND DMG 4 NNE MIDWAY 31.86N 81.40W  
06/17/2016 LIBERTY GA 911 CALL CENTER

LIBERTY COUNTY WARNING POINT REPORTS A TREE DOWN AT THE  
CORNER OF N COASTAL HWY AND SHAVETOWN RD. TIME ESTIMATED  
FROM RADAR

0655 PM TSTM WND DMG 3 N MIDWAY 31.86N 81.43W  
06/17/2016 LIBERTY GA PUBLIC

REPORT OF NUMEROUS PINE TREES SNAPPED AND DOWN ALONG  
FREEDMAN GROVE RD

0655 PM TSTM WND DMG 5 E FORT STEWART 31.87N 81.44W  
06/17/2016 LIBERTY GA 911 CALL CENTER

LIBERTY COUNTY WARNING POINT REPORTS A TREE DOWN ACROSS  
THE RAILROAD TRACKS NEAR PATE RODGERS RD

0655 PM TSTM WND DMG FORT STEWART 31.86N 81.52W  
06/17/2016 LIBERTY GA TRAINED SPOTTER

TREES REPORTED DOWN IN FORT STEWART.

0657 PM TSTM WND DMG 4 N MIDWAY 31.87N 81.43W  
06/17/2016 LIBERTY GA 911 CALL CENTER

LIBERTY COUNTY WARNING POINT REPORTS A TREE DOWN ON  
POWER LINES...WITH LINES LIVE AND SPARKING...NEAR THE 26  
MILE MARK ON LEROY COFFER HWY

0700 PM TSTM WND DMG 3 ESE MCINTOSH 31.81N 81.48W  
06/17/2016 LIBERTY GA 911 CALL CENTER

LIBERTY COUNTY WARNING POINT REPORTS A TREE ACROSS THE  
ROAD IN THE 7800 BLOCK OF OGLETHORPE HWY

0741 PM TSTM WND DMG TOWNSEND 31.54N 81.52W  
06/17/2016 MCINTOSH GA 911 CALL CENTER

MCINTOSH/LONG COUNTY WARNING POINT REPORTS A TREE DOWN  
ON HWY 57 IN TOWNSEND. TIME ESTIMATED FROM RADAR

0745 PM TSTM WND GST 5 SE VALONA 31.42N 81.29W  
06/17/2016 M47 MPH MCINTOSH GA OFFICIAL NWS  
OBS

REPORT FROM THE SAPELO ISLAND NERRS.

0746 PM TSTM WND DMG 1 NNW DARIEN 31.39N 81.44W  
06/17/2016 MCINTOSH GA 911 CALL CENTER

MCINTOSH/LONG COUNTY WARNING POINT REPORTS A TREE DOWN  
ON NEW RIVER RD IN DARIEN





*Wind damage in Beaufort County SC (Credit: Island Packet newspaper)*