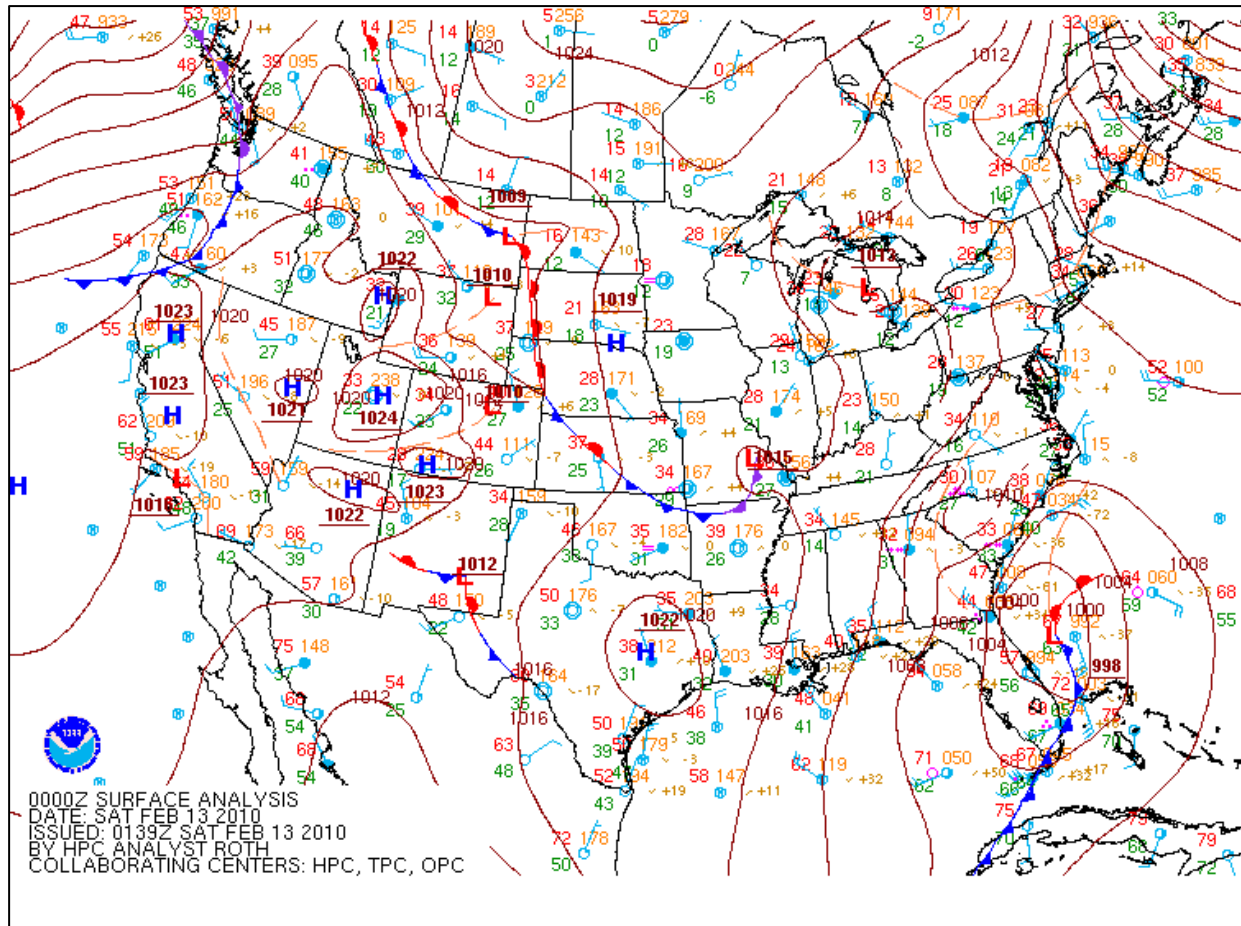
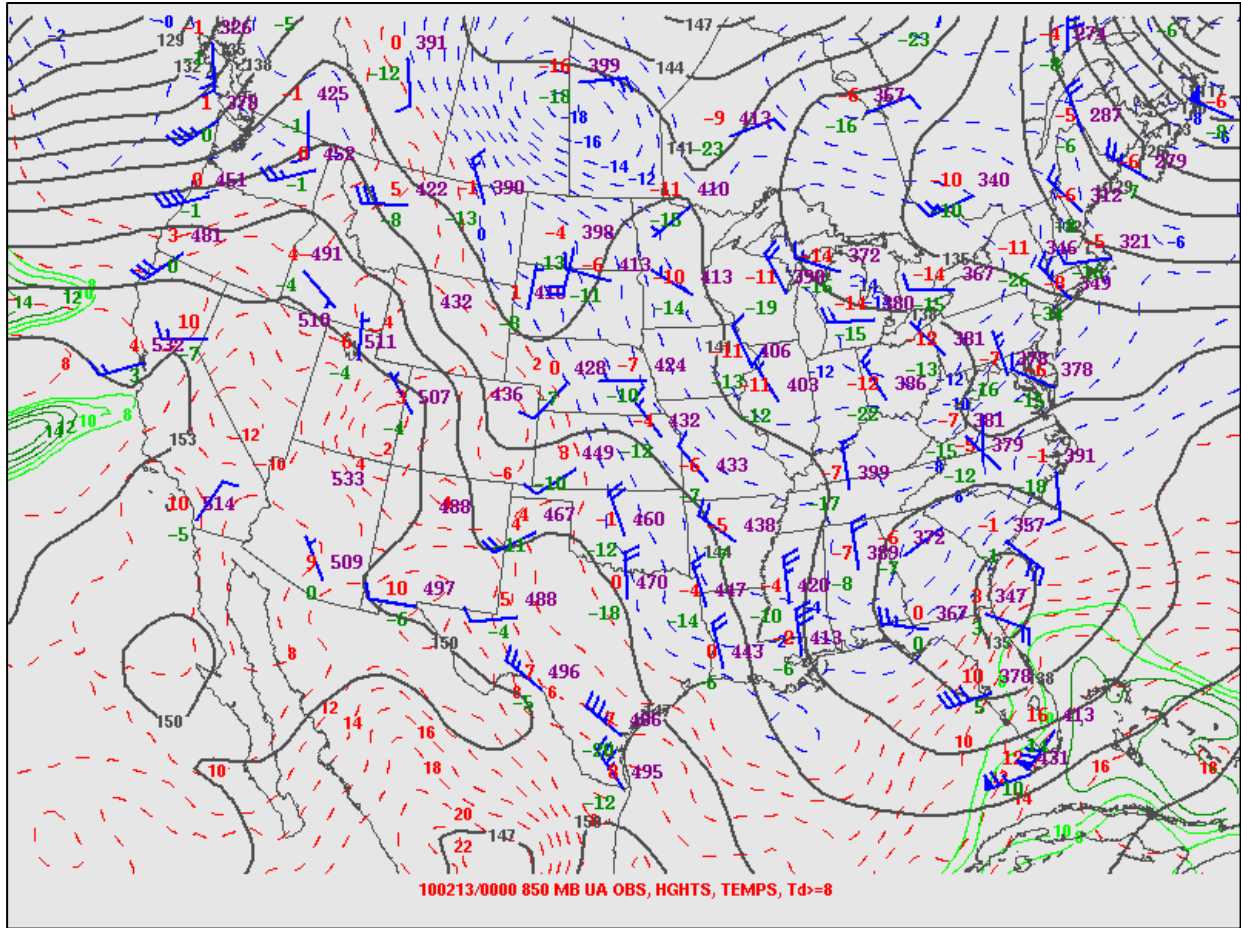


# The February 12-13, 2010 Snow Storm

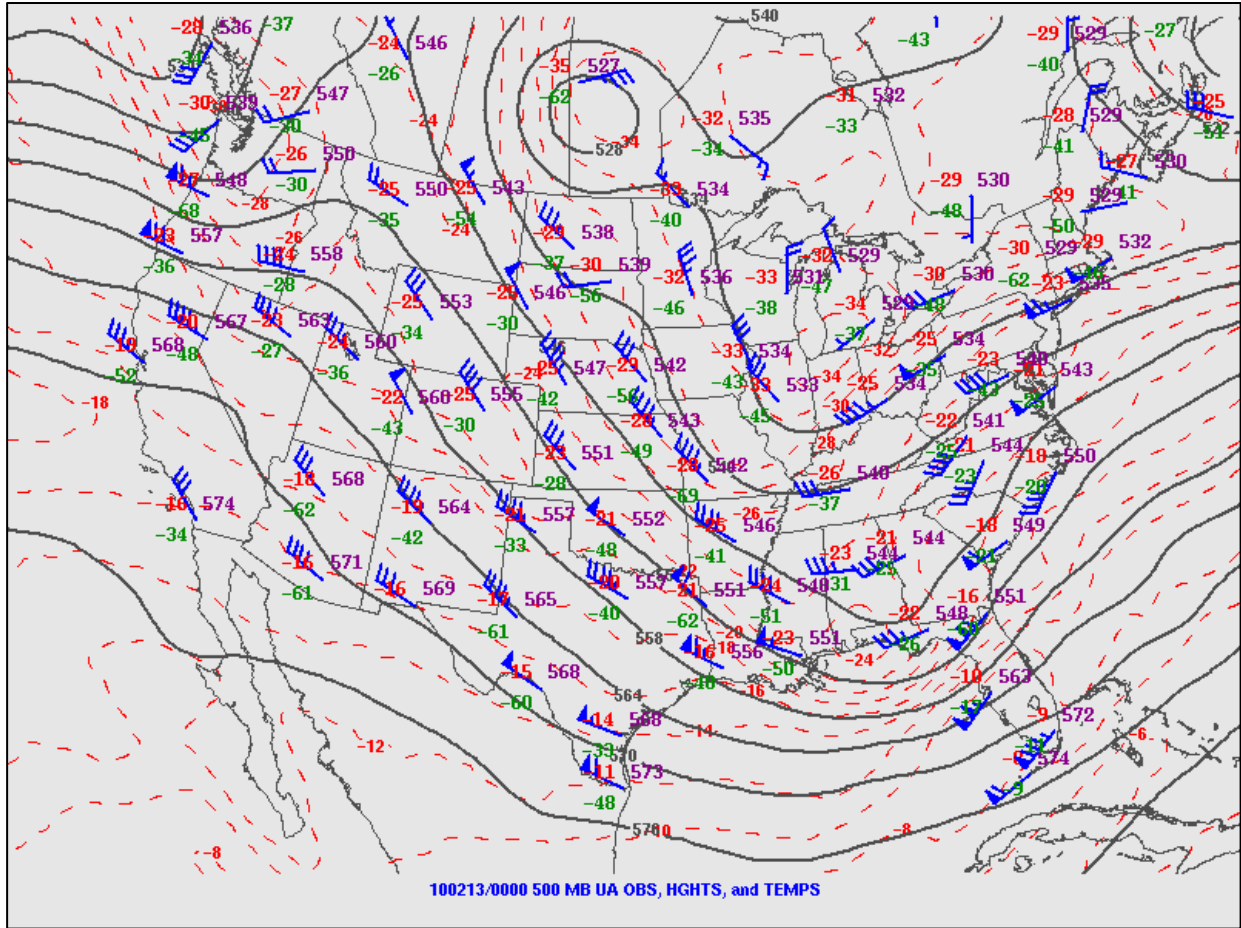
**Meteorological Summary:** Surface low pressure tracked offshore and initially produced a chilly rain across the region. Then, as the surface low pulled colder air into the region, a strong upper low tracked over the region. The combination of moisture, forcing for ascent and cold air changed rain to a period of snow across much of the area. Depending on your location, this was the greatest snowfall since December 1989 and even February 1973.



*The early Friday evening surface analysis depicted low pressure off the Southeast coast.*

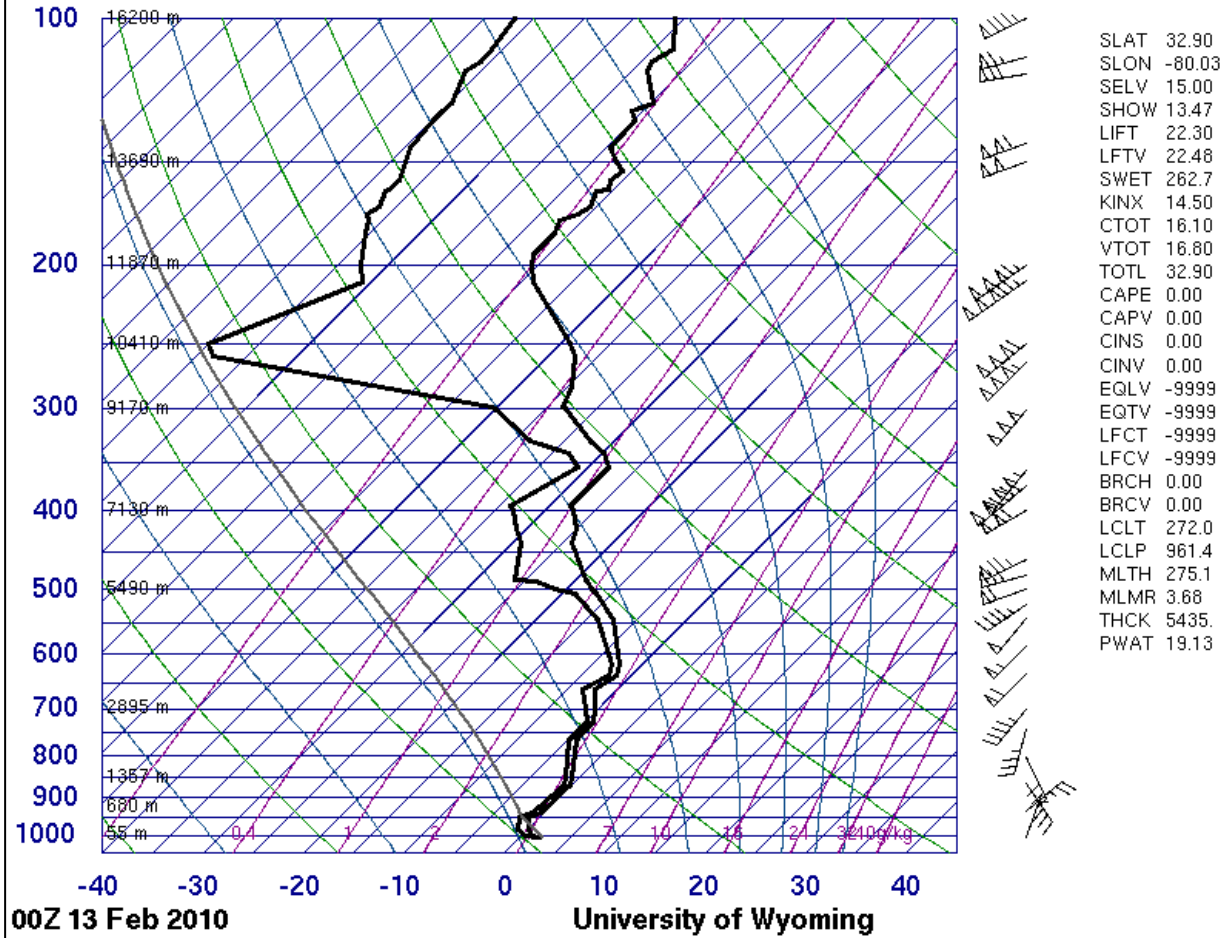


*The Friday evening 850 mb analysis showed low pressure hugging the Southeast coast. North and west of this low, colder air was spreading into the region – just cold enough to produce snow.*



*The Tuesday evening 500 mb analysis showed the upper low approaching the Southeast coast. This feature played a crucial role in producing accumulating snow.*

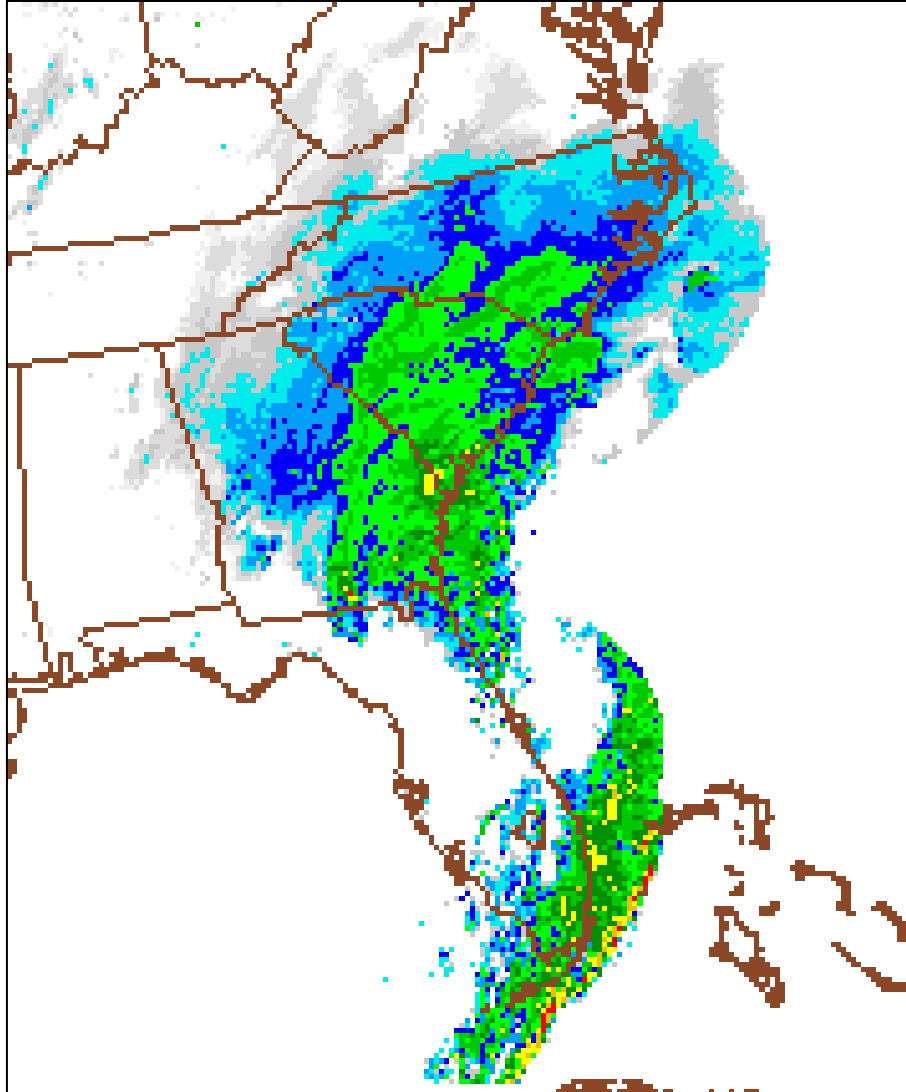
**72208 CHS Charleston**



*The Friday evening upper air sounding launched at Charleston depicted a deep layer of moisture at or below freezing above surface temperatures just a shade above 32F. This environment offered ample opportunity for ice crystal formation and snowflake growth.*



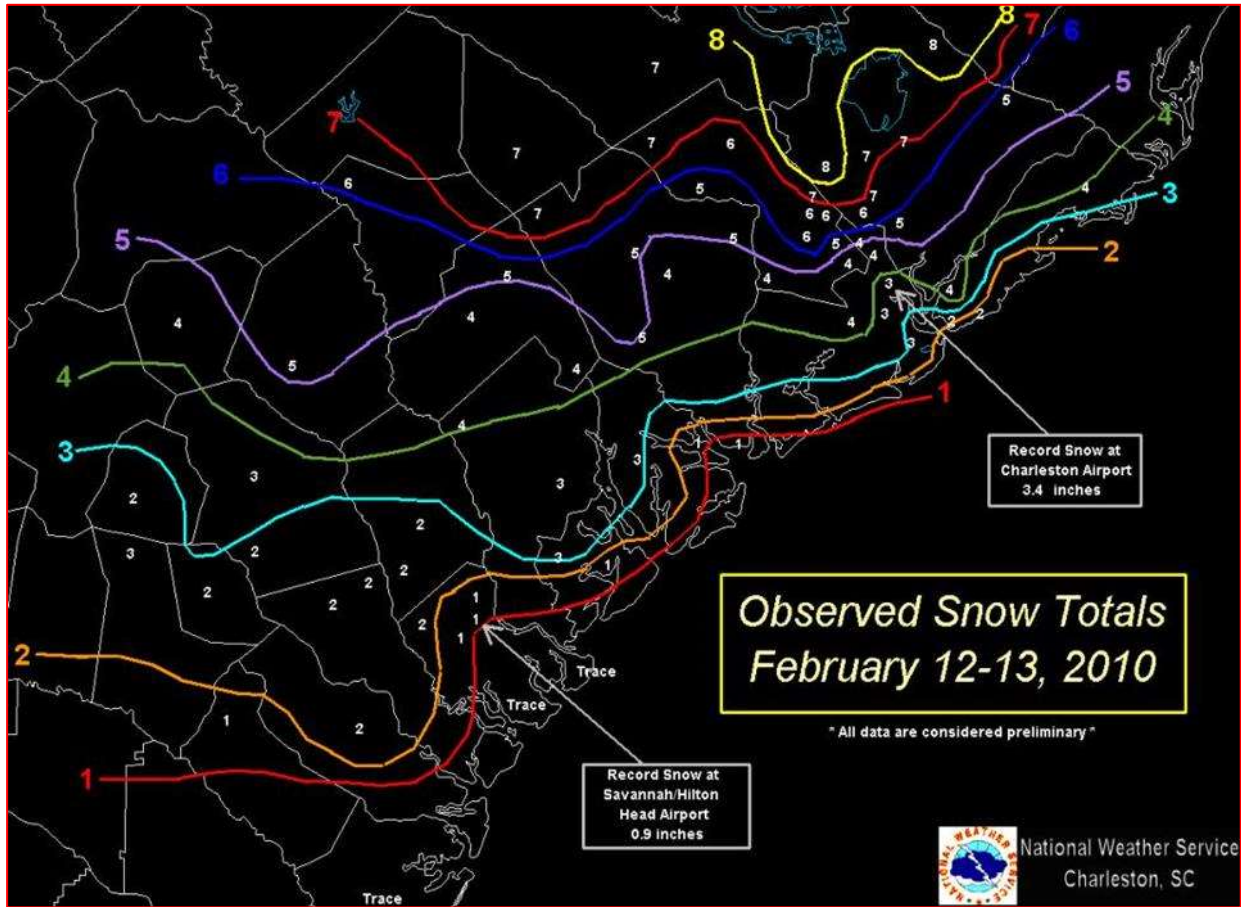
*The Friday afternoon visible satellite imagery showed the thick canopy of clouds over the Southeast, including a hint of a comma cloud associated with the upper low.*



*Friday evening radar imagery depicted the comma cloud precipitation, associated with the upper low, draped over the region.*



*The Friday evening KCLX radar reflectivity image. Note the banded, convective nature of the precipitation and the high reflectivity produced in part by water-covered snowflakes in the vicinity of the rain-snow line.*



PUBLIC INFORMATION STATEMENT  
 NATIONAL WEATHER SERVICE CHARLESTON SC  
 1215 AM EST SUN FEB 14 2010

THE FOLLOWING ARE UNOFFICIAL SNOW TOTALS FOR THE FEBRUARY 12-13 2010 SNOW EVENT. APPRECIATION IS EXTENDED TO SKYWARN SPOTTERS...BROADCAST MEDIA...COOPERATIVE OBSERVERS...COCORAHs OBSERVERS...AND THE PUBLIC FOR SENDING SNOW REPORTS. THIS SUMMARY IS ALSO AVAILABLE ON OUR HOME PAGE AT WEATHER.GOV/CHS

\*\*\*\*\*STORM TOTAL SNOWFALL\*\*\*\*\*

LOCATION	STORM TOTAL SNOWFALL (INCHES)	TIME/DATE OF MEASUREMENT	COMMENTS
----------	-------------------------------	--------------------------	----------

SOUTH CAROLINA

...ALLENDALE...			
MILLETT 3 NW	6.0	700 AM 2/13	SPOTTER



...BEAUFORT...

BEAUFORT	3.0	1132	PM	2/12	LAW ENFORCEMENT
BLUFFTON 6.2 WNW	3.0	700	AM	2/13	COCORAHS
BEAUFORT 5.9 NE	1.0	700	AM	2/13	COCORAHS
BLUFFTON	1.0	1100	PM	2/12	SPOTTER
BLUFFTON	0.8	1128	PM	2/12	SPOTTER

...BERKELEY...

SUMMERVILLE 3.8 NE	8.2	700	AM	2/13	COCORAHS
SAINT STEPHEN	8.0	800	AM	2/13	FIRE DEPT
SANGAREE 6 N	7.0	854	AM	2/13	SPOTTER
MONCKS CORNER 1 SW	6.5	1255	AM	2/13	SPOTTER
SANGAREE	6.5	1200	AM	2/13	SPOTTER
SANGAREE	5.7	845	AM	2/13	SPOTTER
JAMESTOWN	5.0	800	AM	2/13	COOP OBSERVER
JAMESTOWN	5.0	1001	PM	2/12	PUBLIC
MONCKS CORNER	5.0	930	PM	2/12	FIRE DEPT
MOUNT HOLLY 1 E	4.7	415	AM	2/13	NWS EMPLOYEE
GOOSE CREEK 3 WNW	4.5	141	AM	2/13	SPOTTER
HANAHAH 1.2 NNW	4.0	700	AM	2/13	COCORAHS
GOOSE CREEK 3 NW	3.5	1152	PM	2/12	NWS EMPLOYEE
GOOSE CREEK 4.6 WNW	3.5	700	AM	2/13	COCORAHS
GOOSE CREEK 2 NNE	3.0	1138	PM	2/12	SPOTTER
HANAHAH	3.0	1052	PM	2/12	NWS EMPLOYEE
HANAHAH 1.1 N	3.0	700	AM	2/13	COCORAHS

...CHARLESTON...

ARCHDALE 3 NE	4.9	1225	AM	2/13	SPOTTER
ARCHDALE 5 S	4.2	200	AM	2/13	SPOTTER
MCCLELLANVILLE	4.0	800	AM	2/13	FIRE DEPT
CHARLESTON 6.4 NW	4.0	700	AM	2/13	NWS EMPLOYEE
MOUNT PLEASANT	3.8	700	AM	2/13	SPOTTER
CHARLESTON AIRPORT	3.4	800	AM	2/13	OFFICIAL OBSERVER
NORTH CHARLESTON 1.1 SE	3.4	700	AM	2/13	COCORAHS
WEST ASHLEY 2 WNW	3.4	1145	PM	2/12	BROADCAST MEDIA
JAMES ISLAND 2 WNW	3.0	823	AM	2/13	SPOTTER
MT PLEASANT/PARK WEST	2.3	730	AM	2/13	NWS EMPLOYEE
MT PLEASANT/RIVERTOWNE	2.2	730	AM	2/13	NWS EMPLOYEE
CHARLESTON 2.8 NE	1.8	700	AM	2/13	COCORAHS
MT PLEASANT 1.4 SW	1.6	630	AM	2/13	NWS EMPLOYEE

...COLLETON...

SMOAKS 0.1 ESE	7.0	700	AM	2/13	COCORAHS
CANADYS 0.4 NW	5.0	700	AM	2/13	COCORAHS
COTTAGEVILLE 3 S	5.0	711	AM	2/13	NWS EMPLOYEE
HENDERSONVILLE	5.0	1147	PM	2/12	SPOTTER
WALTERBORO 3.0 NNW	5.0	700	AM	2/13	COCORAHS
WALTERBORO	4.0	855	PM	2/12	BROADCAST MEDIA
BENNETTS POINT	1.0	451	AM	2/13	SPOTTER
EDISTO BEACH	0.5	800	AM	2/13	COOP OBSERVER

...DORCHESTER...

REEVESVILLE 1.0 SSE	7.0	700	AM	2/13	COCORAHS
RIDGEVILLE	7.0	845	AM	2/13	SPOTTER

SUMMERVILLE	7.0	847 AM	2/13	SPOTTER
ARCHDALE 5 NW	6.0	200 AM	2/13	SPOTTER
ST. GEORGE 3 E	6.0	1054 PM	2/12	SPOTTER
SUMMERVILLE	6.0	800 AM	2/13	SPOTTER
SUMMERVILLE 4.1 WNW	5.6	700 AM	2/13	COCORAHS
GIVHANS FERRY S.P.	5.5	800 AM	2/13	COOP OBSERVER
SUMMERVILLE 6 SSE	5.5	1228 AM	2/13	NWS EMPLOYEE
SUMMERVILLE	5.5	1230 AM	2/13	SPOTTER
LADSON 2.3 SW	5.0	700 AM	2/13	COCORAHS
LINCOLNVILLE 2 3	5.0	650 AM	2/13	NWS EMPLOYEE
GIVHANS	4.3	1125 PM	2/12	SPOTTER
SUMMERVILLE 3.3 NE	4.0	700 AM	2/13	COCORAHS
SUMMERVILLE	4.0	1100 PM	2/12	SPOTTER
SUMMERVILLE 3.3 NE	4.0	700 AM	2/13	COCORAHS
TAYLOR PLANTATION	3.0	902 AM	2/13	NWS EMPLOYEE
SUMMERVILLE 2.1 WSW	2.0	911 PM	2/12	SPOTTER
SAINT GEORGE	0.5	655 PM	2/12	LAW ENFORCEMENT
...HAMPTON...				
VARNVILLE 6.7 SW	5.0	700 AM	2/13	COCORAHS
BRUNSON 2 SSW	4.0	1054 PM	2/12	AMATEUR RADIO
BRUNSON 1.6 SSW	4.0	700 AM	2/13	COCORAHS
YEMASSEE	3.5	1150 PM	2/12	AMATEUR RADIO
...JASPER...				
PINELAND	4.0	1200 AM	2/13	LAW ENFORCEMENT
RIDGELAND 5.8 ESE	3.0	700 AM	2/13	COCORAHS
GEORGIA				
...BRYAN...				
BLITCHTON	2.0	835 AM	2/13	PUBLIC
PEMBROKE	2.0	907 PM	2/12	SPOTTER
...BULLOCH...				
BROOKLET	2.5	750 AM	2/13	COOP OBSERVER
STATESBORO	2.5	935 PM	2/12	AMATEUR RADIO
STATESBORO 3 SW	1.9	945 PM	2/12	SPOTTER
...CANDLER...				
METTER	2.0	925 PM	2/12	LAW ENFORCEMENT
...CHATHAM...				
POOLER	2.0	1030 PM	2/12	SPOTTER
POOLER 1.2 NNE	1.5	700 AM	2/13	COCORAHS
GARDEN CITY	1.0	830 AM	2/13	PUBLIC
POOLER 0.8 NNE	1.0	700 AM	2/13	COCORAHS
SAVANNAH AIRPORT	0.9	1200 AM	2/13	OFFICIAL OBSERVER
...EFFINGHAM...				
GUYTON	2.0	930 PM	2/12	LAW ENFORCEMENT
SPRINGFIELD	2.0	711 AM	2/13	SPOTTER
SPRINGFIELD	1.5	930 PM	2/12	LAW ENFORCEMENT
RINCON	1.0	1045 PM	2/12	SPOTTER

...EVANS...					
CLAXTON 5 W	1.5	945 PM	2/12	SPOTTER	
...JENKINS...					
MILLEN	3.5	935 PM	2/12	LAW ENFORCEMENT	
...LIBERTY...					
HINESVILLE	2.0	907 PM	2/12	SPOTTER	
...LONG...					
GLENNVILLE 3 ESE	0.7	1030 PM	2/12	AMATEUR RADIO	
...SCREVEN...					
SYLVANIA 4.2 WSW	4.5	700 AM	2/13	COCORAHS	
SYLVANIA	3.0	953 PM	2/12	EMERGENCY MNGR	
NEWINGTON	2.0	739 PM	2/12	PUBLIC	
...TATTNALL...					
COBBTOWN 1 E	3.0	1000 PM	2/12	SPOTTER	
REIDSVILLE	1.0	732 PM	2/12	SPOTTER	

\$\$



*Near Round O, SC (Brent Shirts, NWS).*



*Dorchester Road, North Charleston (Doug Berry, NWS).*



*Charleston, SC, Waterfront Park (Doug Berry, NWS).*



*NWS Office, Charleston, SC (John Quagliarello, NWS).*



*Hanahan, SC (Bob Bright, NWS).*





*James Island, SC (Vern Beaver, NWS).*