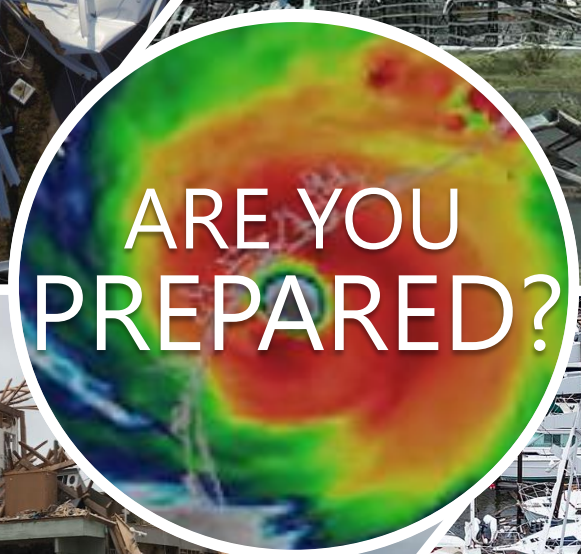




The Official South Texas

# HURRICANE GUIDE

2018



# A Letter to Residents

Hello South Texas Residents,

Before 2017 the Middle Texas Coast had gone more than 45 years without experiencing a major hurricane. Generations of our citizens had grown up and lived here without ever having to suffer through the impacts of a major hurricane. Sadly, on August 25 of last year, our luck ran out as Hurricane Harvey came ashore.

Harvey's wind and surge caused billions of dollars in damage and lost economic activity across the Coastal Bend. Communities like Rockport, Port Aransas, Aransas Pass and Refugio were devastated and will take many years to fully recover. Miraculously, across South Texas there was not a single fatality directly associated with Harvey's landfall. Even though Harvey strengthened incredibly quickly, going from a tropical depression to major hurricane in just 40 hours, the area was ready.

Being hit by a major hurricane in 2017 doesn't let us off the hook for the 2018 season. We all need to be as prepared as ever and this Hurricane Guide is a great place to start. Learn what to do before, during, and after a storm. The key is having a plan...one that includes preparing your home, getting survival supplies, making sure you safeguard critical documents, ensuring your insurance is up to date, and planning for evacuation.

I'll end with a couple sayings you'll hear us use in the hurricane preparedness community. First, every storm is different. The next hurricane to hit our region could produce the kind of rains that affected Houston or a storm surge twice as high as Harvey's. This guide is a great resource to learn more about, and prepare for, all the hazards associated with hurricanes. Second, it only takes one. Don't pay too much attention to seasonal forecasts as they don't tell us anything about how likely we are to be struck in any given year. Just be ready, this year and every year, because the only thing we know for sure is that we will get hit again.

Sincerely,

*Tom Johnstone*  
Meteorologist-In-Charge  
National Weather Service  
Corpus Christi, Texas

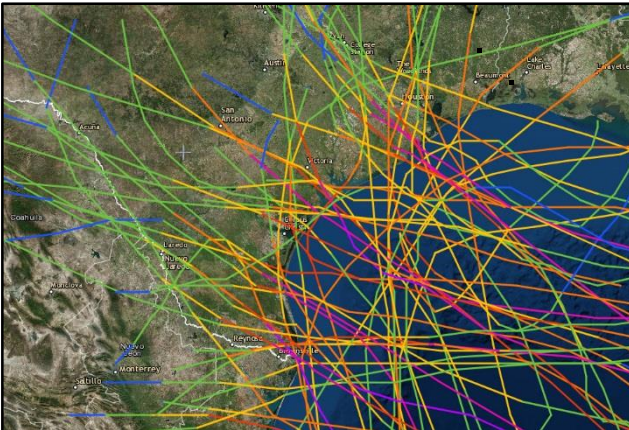


# About Hurricanes



*Above: High resolution satellite image of Hurricane Harvey approaching the Middle Texas Coast. Image--NOAA*

Hurricanes form over warm ocean waters, like those found in the Gulf of Mexico. The hurricane season starts June 1 and ends November 30. The peak threat for the Texas coast exists from August through September. However, hurricanes can and have struck the Texas coast during every month of the hurricane season.



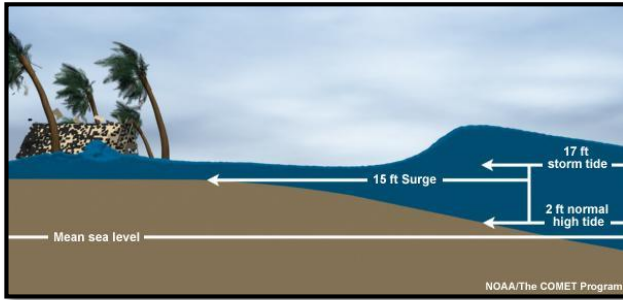
*Above: Historical perspective of hurricane landfalls in Texas since 1851. Image -- NOAA*

**Since 1851, 64 hurricanes have struck the Texas coast. That is one every three years on average.**



## Storm Surge Defined

Storm surge is an abnormal rise of water generated by a storm, over and above the predicted astronomical tides. This rise in water level can cause extreme flooding in coastal areas resulting in storm tides reaching up to 20 feet or more in some cases. Along the Texas coast, these flood waters can penetrate far inland depending on the elevation of the land. If the storm tide is greater than the land elevation (even if well inland) then storm surge flooding will be possible.



## Storm Surge Can Be Deadly! Here are 6 Tips to be Ready

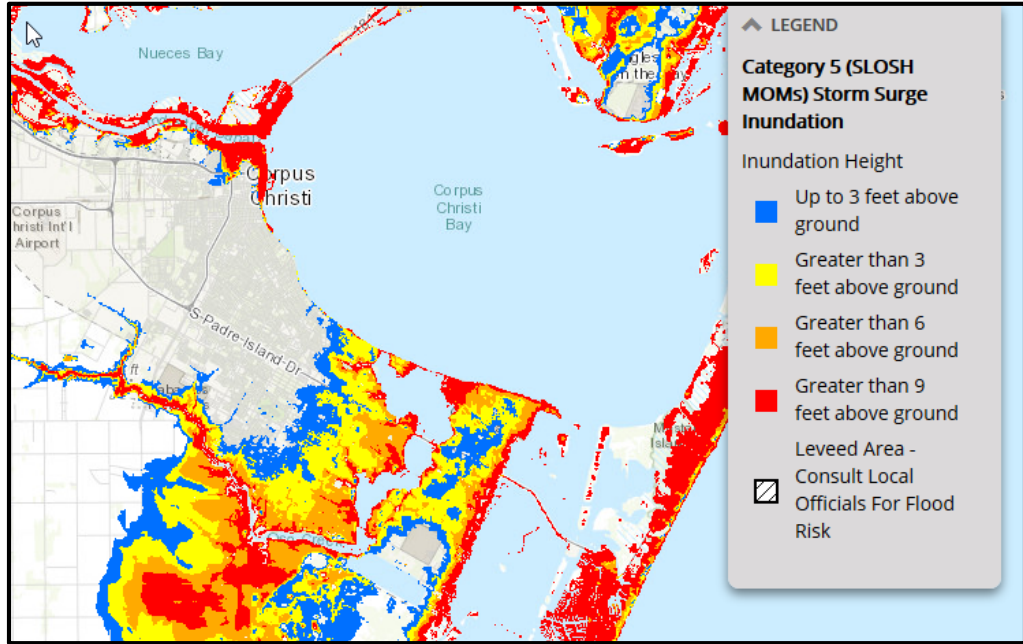
1. Storm surge flooding is often the greatest threat to life and property from a hurricane. It poses a significant threat for drowning. A mere six inches of fast-moving flood water can knock over an adult. It takes only two feet of rushing water to carry away most vehicles.
2. Storm surge can cause water levels to rise quickly and flood large areas in just minutes, and you could be left with no time to take action if you haven't already evacuated as instructed.
3. Storm surge is not dependent on the Saffir-Simpson Hurricane Wind Scale. Hurricane categories are based only on winds and do not account for storm surge. Any wind category can all cause life-threatening storm surge.
4. Many Gulf Coast areas are vulnerable to storm surge including areas many miles inland from the coastline depending on elevation of the coastal plain. Find out today if you live in a storm surge zone (see pages 5-7 in this guide).
5. Storm surge can occur before, during and after the center of the storm passes through an area, and can sometimes cutoff evacuation routes. The water can also rise well in advance of the coming storm, in some cases 36 hours or greater. When an evacuation is ordered, do not wait until the last minute to leave.
6. During the peak of a storm surge event, it is unlikely that emergency responders will be able to reach you if you are in danger.



For more information about storm surge, please visit the new NHC Storm Surge Video: <https://www.youtube.com/watch?v=bBa9bVYKLP0>

# Storm Surge

## Corpus Christi



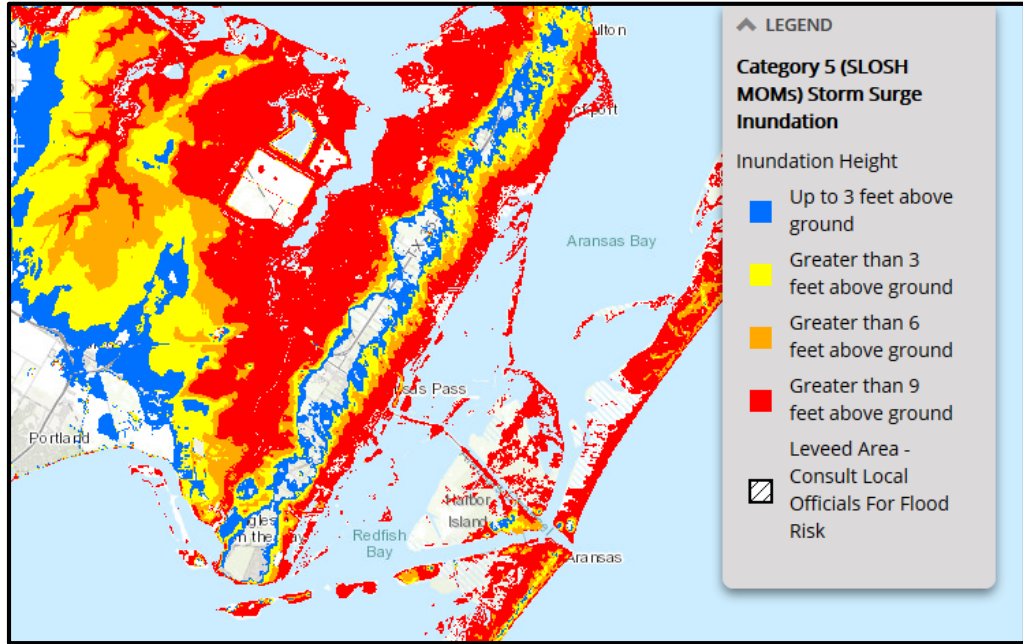
Above: This map shows the height above ground the water could reach and depicts the reasonable worst-case scenario from storm surge flooding.

**“The greatest potential for loss of life related to a hurricane is from the storm surge.”**

**-National Hurricane Center**

# Storm Surge

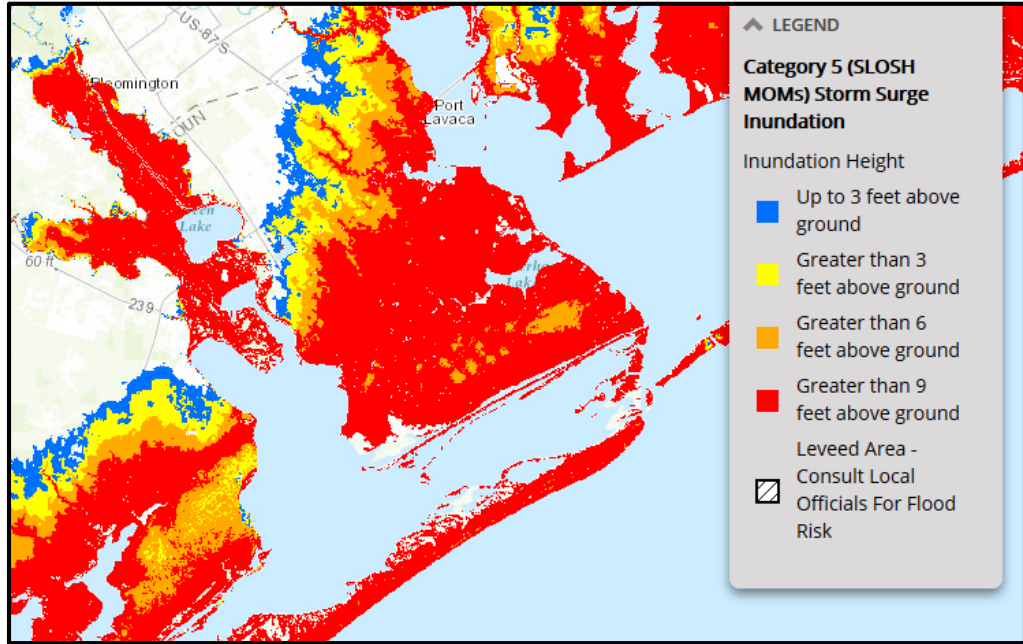
## Rockport/Port Aransas



Above: This map shows the height above ground the water could reach and depicts the reasonable worst-case scenario from storm surge flooding.

# Storm Surge

## Port Lavaca



Above: This map shows the height above ground the water could reach and depicts the reasonable worst-case scenario from storm surge flooding.

Want to see more high resolution storm surge maps?  
Visit: [National Storm Surge Hazard Maps](#)

# Inland Flooding

There are numerous examples of significant flooding caused by land-falling tropical cyclones in Texas. Storms with a slow forward motion are the most dangerous as heavy rains persist for a longer period of time.

## Five Practical Ways to Protect Yourself and Others From the Dangers of Inland Flooding

### Protect Your Personal Documents and Special Items

- Store valuables in plastic tubs with locking tops
- In case of an evacuation, you should be able to secure and move all your valuables within 15 minutes

### Buy Flood Insurance – A Plan for Replaceable Items

- The National Flood Insurance Program (NFIP) is available from an insurance agent or the NFIP
- For more information see [www.floodsmart.gov](http://www.floodsmart.gov)

### Flood Proof Your Home – Take Steps to Minimize Flood Damage

- Shut off the main circuit breaker to prevent appliances from short circuiting and eliminate the threat of electrocution
- Raise outside air conditioning units onto platforms above ground level
- Store rarely used or expensive items in the attic or on high shelves

### Develop a Family Flood Plan

- Develop a plan of action to keep from panicking or withdrawing during an emergency
- Have an evacuation route and alternatives planned in the event you are asked to evacuate
- Communicate your plans with friends or family outside of your home area
- Battery powered radios or televisions can be used in the event of a power outage

### Never Drive on Flooded Roads

- Driving into flooded roadways puts your life and the lives of others at risk
- Unless told to evacuate, you are probably safest staying at your current location
- If you encounter flood waters when driving, Turn Around, Don't Drown!





# Tornadoes and Destructive Winds

Tropical cyclones also produce tornadoes. These tornadoes most often occur in thunderstorms embedded in rain bands well away from the center of the hurricane; however, they can also occur near the eyewall. Tornadoes produced by tropical cyclones are relatively weak and short-lived, but still pose a threat.

Hurricane force winds of 74 mph or more can destroy buildings, mobile homes, trees and power poles. Debris such as signs, roofing material, siding, and small items left outside become flying missiles in a hurricane. The strongest winds occur in a region of the hurricane called the eyewall. Wind gusts in the right side of the eyewall are the most destructive. Hurricane force winds can be felt as far as 150 miles from the coast



Above: Damage to a community in Breezy Point, N.Y. in the wake of Hurricane Sandy in 2012.

## MOBILE HOME RESIDENTS MUST EVACUATE!



- No mobile home or manufactured home - no matter how new it is - can provide safe shelter from hurricane force winds.
- Straps or other tie-downs will not protect a mobile home from the high winds associated with a hurricane.
- Mobile home residents must evacuate when told to do so by local authorities.

## Saffir Simpson Hurricane Wind Scale

- Category 1 - Winds 74 to 95 mph
- Category 2 - Winds 96 to 110 mph
- Category 3 - Winds 111 to 129 mph
- Category 4 - Winds 130 to 156 mph
- Category 5 - Winds 157 mph or higher

# Hurricane Preparation

## Home Preparation

### Elevation Matters

- Know the elevation of your home! Are you in a flood and/or evacuation zone?

### Mobile Homes

- Check tie-downs for rust or breakage.
- Residents of mobile homes must evacuate when told to do so!!

### Landscaping

- Trim trees, shrubbery and dead limbs, especially ones close to your home.
- Repair or replace broken or damaged fences.



### Roofing

- Inspect the roof for loose tiles, shingles or debris. Consider replacing old or damaged shingles with new ones rated for hurricane force winds.
- Clear loose and clogged rain gutters and downspouts.

### Doors

- Reinforce garage doors and tracks or replace with a hurricane tested door.
- Reinforce double entry doors with heavy duty foot and head bolts.
- Use a security dead bolt with a one inch minimum bolt length.

### Windows

- If possible, install tested/manufactured hurricane shutters.
- Inspect existing shutters to ensure they are in good working order.
- Alternative: Use 5/8" or greater exterior grade plywood secured by 2 1/2" screws and/or special clips. Obtain wood and fasteners, cut wood to size, pre-drill holes and place anchors on homes.

# Additional Preparation

## Business and Employee Preparation

- Identify and protect vital records. Backup and store key files off site.
  - Protect electronic equipment from possible water damage.
  - Have extra cash and blank checks in case extra money is needed after the storm.
  - Develop a 24-hour emergency contact with phone numbers of key employees.
  - Set up telephone numbers for employees to check in and receive company information.
  - Establish a temporary location for business operations in case your facility is damaged.
  - Give employees enough time to secure their homes and families.
  - Consider paying employees before they leave to prepare their homes.
- 

## Marine Preparations

- Check with the manufacturer for proper ways to secure your boat during a storm.
  - Purchase necessary hurricane materials such as additional mooring lines, crew anchors, fenders, fender boards, chafing gear, and anchors.
  - Safe storm moorings should consist of good condition ropes of sufficient diameter and length, with at least three or four substantial anchor points.
  - Do not moor parallel to bank. Receding tides often capsize boats in this type of anchorage.
- 

## Preparing for Your Pet's Safety

- Your pet should be part of your overall hurricane preparation plans. Below are a few important things to help you prepare:
- Make sure your pet's vaccinations are current and have proof they are current. **DO NOT** assume that a public shelter or hotel will accept your pet.
- Be sure to have a current photo of your pet.
- Each animal should have a properly sized pet carrier. The carrier should be large enough for the animal to stand up and turn around.
- Pack enough food and bottled water for the duration of your evacuation. **DO NOT** let your pet eat food or drink water from outside that may have become contaminated.
- Be sure to pack all medications your pet may need along with a muzzle, collar, leash, paper towels, and trash bags.
- Make sure your pet has a proper ID collar.

## Before the Storm

- New and existing policies will not be written or modified when a storm nears the Gulf of Mexico.
  - Make sure you fully understand what perils are covered and excluded in your policy.
  - Make sure your coverage is adequate to replace your home and contents in today's dollar.
  - Determine whether your policy covers additional living expenses for a temporary residence if you are unable to live in your home because of damage from a disaster.
  - Before hurricane season, prepare detailed written and/or photographic inventory of your home's contents and store it in a safe place with your policy.
  - If your insurance company does not cover flood or windstorm perils, ask about coverage through the Texas Windstorm Insurance Association or the National Flood Insurance Program.
- 

## After the Storm

- Give prompt written notice to your insurance company.
- Photograph or videotape damaged structures and all damaged property. Make a list of damaged or lost items.
- DO NOT throw out damaged property before your adjuster has inspected the debris unless it is a health hazard or impedes local cleanup.
- Protect your property from further damage.
- Keep an accurate record of temporary repair and living expenses if a loss of use is suffered.

## Important Online Insurance Information

- National Flood Insurance Program  
[www.floodsmart.gov](http://www.floodsmart.gov)
- Texas Windstorm Insurance Association  
[www.twia.org](http://www.twia.org)  
Consumer help line 800-788-8247
- Texas Department of Insurance  
[www.tdi.texas.gov](http://www.tdi.texas.gov)  
Consumer Help Line 800-252-3439

# Contact Info and Supplies



**American  
Red Cross**

## Emergency Contact Information

Out of Town Contact Address: \_\_\_\_\_

Out of Town Contact Phone Number: \_\_\_\_\_

Work Telephone Number: \_\_\_\_\_

Cell Number/Spouse Cell Number: \_\_\_\_\_

Children Cell Number: \_\_\_\_\_

School Telephone Number: \_\_\_\_\_

Doctor Telephone Number: \_\_\_\_\_

Bank/Credit Card Telephone Number: \_\_\_\_\_

Insurance Company Information: \_\_\_\_\_

Whatever comes your way,  
you'll know what to do.

**Red Cross mobile apps  
put help in your hand.**



**24 hour number to  
call for assistance  
1-800-RED CROSS  
(1-800-733-2767)**

Download our preparedness apps today. Call \*\*REDCROSS from your mobile phone and we'll send you a link to download the apps, or search the iTunes app store or Google Play for American Red Cross.



# Hurricane Supply Kit

**Your chapter of the American Red Cross recommends that you have the following items in your Hurricane Supply Kit.**

- At least a 7-day supply of non-perishable food and water. One gallon of water per person per day is recommended
- Battery powered portable television or radio with extra batteries
- Flashlight with extra batteries
- First Aid kit and manual
- Sanitation and hygiene items such as instant hand sanitizing gel, moist towelettes, toilet paper, and feminine hygiene products
- Whistle
- Kitchen accessories, cooking utensils, and manual can opener
- Cash
- Extra clothing, blankets, and sleeping bags
- Matches in a waterproof container
- Photocopies of identification, insurance, prescriptions, household inventory, credit cards, and your latest utility bill
- CD or photocopies of important documents such as birth/marriage certificates and titles
- Prescription medications, eyeglasses, contact lens solution, and hearing aid batteries
- Formula, baby food, diapers, and pacifiers
- Pet carriers, leashes, shot records, and food for each animal evacuating with you
- A good map showing county roads and highways
- Tire repair kit, booster cables, pump, and flares
- White distress flag
- Toys and games for children
- List of family phone numbers and addresses outside the area

# Hurricane Names

Have you ever wondered how a hurricane gets its name? The National Hurricane Center actually does not name tropical storms and hurricanes. Instead, the names are established by the World Meteorological Organization and then rotated every six years. If a storm is too deadly or costly, the name will be retired and never be used again. The hurricane names Harvey, Irma, Maria, and Nate have been retired due to the extensive damage these storms produced in 2017.

2018	2019	2020	2021	2022	2023
Alberto	Andrea	Arthur	Ana	Alex	Arlene
Beryl	Barry	Bertha	Bill	Bonnie	Bret
Chris	Chantal	Cristobal	Claudette	Colin	Cindy
Debby	Dorian	Dolly	Danny	Danielle	Don
Ernesto	Erin	Edouard	Elsa	Earl	Emily
Florence	Fernand	Fay	Fred	Fiona	Franklin
Gordon	Gabrielle	Gonzalo	Grace	Gaston	Gert
Helene	Humberto	Hanna	Henri	Hermine	Harold
Isaac	Imelda	Isaias	Ida	Ian	Idalia
Joyce	Jerry	Josephine	Julian	Julia	Jose
Kirk	Karen	Kyle	Kate	Karl	Katia
Leslie	Lorenzo	Laura	Larry	Lisa	Lee
Michael	Melissa	Marco	Mindy	Martin	Margot
Nadine	Nestor	Nana	Nicholas	Nicole	Nigel
Oscar	Olga	Omar	Odette	Owen	Ophelia
Patty	Pablo	Paulette	Peter	Paula	Philippe
Rafael	Rebekah	Rene	Rose	Richard	Rina
Sara	Sebastien	Sally	Sam	Shary	Sean
Tony	Tanya	Teddy	Teresa	Tobias	Tammy
Valerie	Van	Vicky	Victor	Virginie	Vince
William	Wendy	Wilfred	Wanda	Walter	Whitney

For a printable hurricane tracking map, please click on this [link](#).

# Forecast Information



## Latest Weather Information

National Weather Service

[www.weather.gov/corpuschristi](http://www.weather.gov/corpuschristi)

24 Hour Phone Recording:

361-289-1861



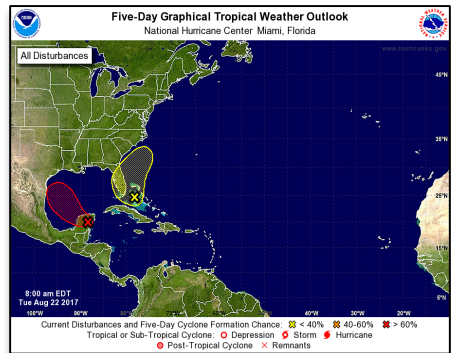
National Hurricane Center

[www.hurricanes.gov](http://www.hurricanes.gov)



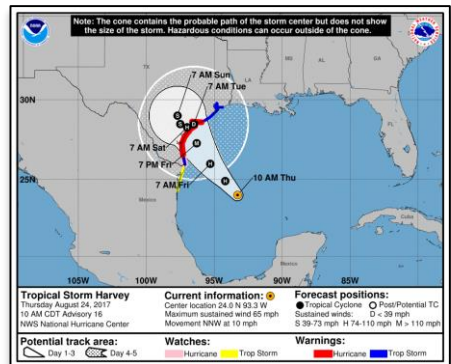
## Graphical Tropical Weather Outlook

- This NHC product provides an overview of all tropical cyclone activity and indicates areas of interest that have potential for tropical cyclone development.



## NHC Forecast Advisory

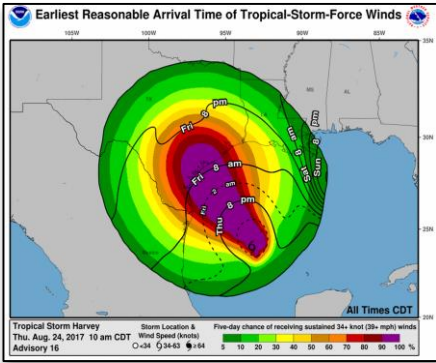
- Most recent position for a storm along with all coastline watches and warnings. Includes a 3 or 5 day track with error cone.
- Error cone represents a 5 year average error. Storms only stay within the error cone 67% of the time.
- DO NOT focus too closely on the exact track forecast – the little back line.
- Impacts may occur well outside the cone.



# Forecast Information

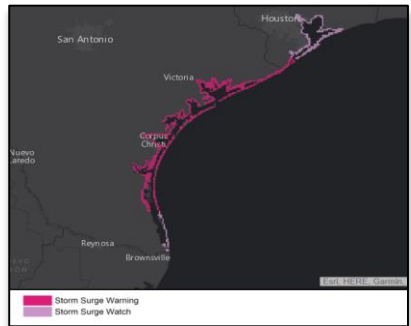
## Time of Arrival Graphics

- These maps are useful planning tools.
- One map shows the earliest reasonable arrival time of tropical storm force winds.
- A secondary map will show the most likely arrival time of tropical storm force winds.



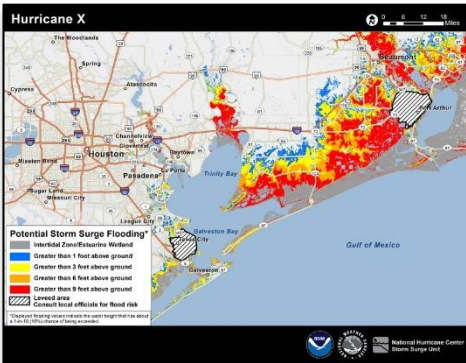
## Storm Surge Watch/Warning

- A storm surge watch is the possibility of life-threatening storm surge within 48 hours.
- A storm surge warning is the danger of life-threatening storm surge within 36 hours.
- If you are located in a storm surge watch or warning, you are not safe. Take action to protect your life. Promptly follow evacuation and other instructions from emergency management officials.



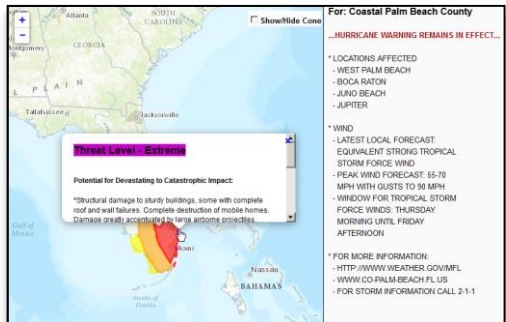
## Potential Storm Surge Flooding Map

- If a hurricane is threatening your community, go to [hurricanes.gov](http://hurricanes.gov) and view the potential storm surge flooding map, which will show the reasonable-worst case scenario from storm surge inundation for your area.



## Hurricane Threats and Impacts

- This product issued by local NWS offices will summarize potential impacts expected from a tropical cyclone.
- Click on the colored area and text that describes potential impacts will display.
- [www.weather.gov/srh/tropical?office=crp](http://www.weather.gov/srh/tropical?office=crp)



# Local Tropical Webpage

## NWS Corpus Christi Tropical Webpage

[Outlook](#)

[Threats and Impacts](#)

[Satellite](#)

[Radar](#)

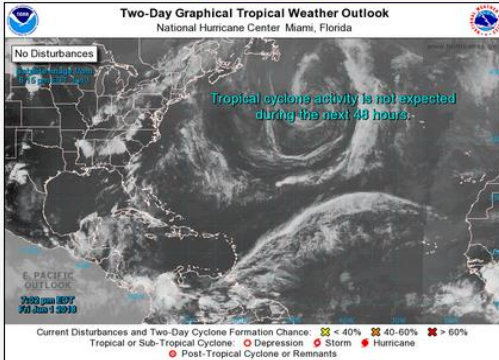
[Social Media](#)

[Preparedness](#)

[Links](#)

There are currently no active storms in the North Atlantic, Caribbean Sea, or Gulf of Mexico.

[Local Briefing from the National Weather Service office in Corpus Christi](#)



Click each image above to view the full-size image.

Tropical Weather Outlook  
NWS National Hurricane Center Miami FL  
8:00 PM EDT Fri Jun 1 2018

For the North Atlantic...Caribbean Sea and the Gulf of Mexico:

Tropical cyclone formation is not expected during the next 5 days.

\$\$  
Forecaster Blake

[Optima aquí para ver la Perspectiva sobre las Condiciones del Tiempo Tropical en Español](#)

- **One-Stop Shop** for all tropical related forecast information, tailored to each forecast area along U.S. coastline.
- **Active Storms** tab appears when NHC initiates Tropical Cyclone advisories.
- **Local Products** tab also becomes active when WFO Issues Watches/Warnings for local area.
- **Satellite and Radar** data is always available.
- **Preparedness** tab is always available and provides quick access to local evacuation maps, preparedness guides, and videos.
- Scrolling down the page provides access to NHC products related to each active storm and WPC rainfall products.



# Final Checklists

## Actions to Take When a Storm is in the Gulf

- Listen frequently to radio, TV, or NOAA weather radio for bulletins and forecasts of the storm's progress.
- Double check items in your emergency supply kit.
- Fuel and service your vehicles.
- Inspect and secure mobile home tie-downs.
- Board up windows (if shutters do not exist) in case storm moves quickly and you have to leave!

### **TAPE PROVIDES NO PROTECTION!**

- Store lawn furniture and other loose, light weight objects, such as garbage cans and garden tools.
- Garage or store vehicles that are not being used.
- Follow instructions issued by local officials.

**EVACUATE IMMEDIATELY IF ORDERED TO DO SO!**

---

## Final Actions to Take if Leaving

- Turn off propane tanks.
- Unplug small appliances.
- Empty refrigerator and freezer.
- Turn off utilities if ordered to do so.
- Lock home securely.
- Take pets with you.



---

## Final Actions to Take if Staying

- Close storm shutters.
- Notify family members of your evacuation plans.
- Lower water level in swimming pool by one foot.
- Turn refrigerator or freezer to coldest setting and open only if necessary.  
(25 pounds of dry ice will keep a 10-cubic foot freezer below freezing for 3-4 days.)
- Follow instructions from emergency managers and be prepared to turn off utilities if ordered to do so.
- Board up remaining doors, brace garage door, and remain inside. Stay away from boarded up windows.
- Take refuge in a predetermined safe room, such as an interior closet, bathroom, or hallway.
- **DO NOT EXPECT EMERGENCY RESPONDERS TO BE OF ANY ASSISTANCE DURING A LANDFALLING HURRICANE!**

# Hurricane Surf and Rip Currents

## Hurricane Surf



Along with big surf come strong rip currents. Rip currents are the leading surf hazard for all beach goers and result in over 100 drownings every year in the United States. The strength and size of rip currents are related to the size of the surf and wave period. Rip currents typically form at the low spots in the surf, at the breaks in the sandbars, and near jetties and piers.

## Rip Currents

If caught in a rip current, don't panic, but swim parallel to the shore. The current is usually only about 50 feet wide and you should be able to swim out of it. At that point, you can swim back to shore. If you are still unable to reach the shore, draw attention to yourself: face the shore, wave your arms, and yell for help.

**RIP CURRENTS**  
**Break the Grip of the Rip!**

The infographic features a central diagram of a rip current. A central channel of water labeled "RIP CURRENT" flows away from the shore, indicated by two upward-pointing arrows. On either side of this channel, the water flows back toward the shore, labeled "SHOREWARD". Four green arrows labeled "ESCAPE" point outward from the rip current channel, indicating the correct direction to swim if caught. Below the diagram, a caption reads: "Rip currents are powerful currents of water moving away from shore. They can sweep even the strongest swimmer out to sea."

**IF CAUGHT IN A RIP CURRENT**

- ◆ Don't fight the current
- ◆ Swim out of the current, then to shore
- ◆ If you can't escape, float or tread water
- ◆ If you need help, call or wave for assistance

**SAFETY**

- ◆ Know how to swim
- ◆ Never swim alone
- ◆ If in doubt, don't go out

More information about rip currents can be found at the following web sites:  
[www.ripcurrents.noaa.gov](http://www.ripcurrents.noaa.gov)  
[www.usla.org](http://www.usla.org)

# Student Information Checklist

<ul style="list-style-type: none"><li>• Assure that all contact information and emergency contact information is accurate with your campus' registrar's office.</li></ul>
<ul style="list-style-type: none"><li>• If your campus offers an emergency management communication system, register as a user of the system.</li></ul>
<ul style="list-style-type: none"><li>• Plan your method of evacuation and your destination before a storm enters the gulf.</li></ul>
<ul style="list-style-type: none"><li>• Monitor local radio and TV stations for updates.</li></ul>
<ul style="list-style-type: none"><li>• Contact your campus Student Affairs Office if you need assistance with evacuation.</li></ul>
<ul style="list-style-type: none"><li>• If you require any assistance due to a disability-related accommodation, please contact your campus Disability Services Office to make necessary arrangements.</li></ul>
<ul style="list-style-type: none"><li>• Communicate with your family regarding status and location</li></ul>
<ul style="list-style-type: none"><li>• If your campus is evacuating, you will not be allowed to remain on-campus and it is highly recommended that you leave the city. Do not go to a coastal location.</li></ul>
<ul style="list-style-type: none"><li>• Take your driver's license, student I.D. card, and a copy of your housing lease as well as medical insurance cards and other important documents when you evacuate.</li></ul>
<ul style="list-style-type: none"><li>• If you bank with a local bank or credit union whose infrastructure may be damaged by the storm, withdraw some funds as you may not have access to them once you leave the area.</li></ul>
<ul style="list-style-type: none"><li>• International students must take passports with US student visa inside, I-20, I-94, student I.D. and class schedule.</li></ul>
<ul style="list-style-type: none"><li>• If using personal transportation, take as many of your valuable or irreplaceable items as you are able.</li></ul>
<ul style="list-style-type: none"><li>• If driving, make sure all roads that you are driving are open and safe. You can call the Department of Transportation at 1-800-452-9292 or check on-line for conditions at <a href="http://www.txdot.gov">www.txdot.gov</a></li></ul>
<ul style="list-style-type: none"><li>• Follow baggage limits if participating in an assisted evacuation program.</li></ul>
<ul style="list-style-type: none"><li>• Take a 30-day supply of medications in original pharmacy containers.</li></ul>
<ul style="list-style-type: none"><li>• Make a record of any valuables left behind (description, serial numbers, etc). Take pictures of all belongings.</li></ul>
<ul style="list-style-type: none"><li>• If you are evacuating to a shelter, make appropriate arrangements for pets. Most shelters do not accept pets.</li></ul>
<ul style="list-style-type: none"><li>• Do not plan to return to campus until an all-clear is given (monitor media and campus web-site).</li></ul>

## STATE OF TEXAS EMERGENCY ASSISTANCE REGISTRY

# STEAR

Do you or anyone you know need some form of assistance during times of an emergency/disaster event? The state of Texas offers Texans the option to register with the STEAR program, a FREE registry that provides local emergency planners and responders with additional information on the needs in their community.

(Texas communities use the registry information in different ways. Registering yourself in the STEAR registry DOES NOT guarantee that you will receive a specific service during an emergency. Available services will vary by community. For more information on how your community will use information in the STEAR registry, contact your local emergency management office.)

### Who Should Register?

- People with Disabilities
- People with access and functional needs such as:
  - People who have limited mobility
  - People who have communication barriers
  - People who require additional medical assistance during an emergency event
  - People who require transportation assistance
  - People who require personal care assistance

### How to Register

- <https://STEAR.dps.texas.gov>
- Dial 2-1-1 or use your video phone relay option of choice to contact 211
- Printed or electronic forms (Contact your local government)

### Required Information to Register

- Name
- Address
- Phone Number
- Primary Language

Registration is **VOLUNTARY**.

### Additional questions asked to capture vital information for local emergency planners and responders

- Emergency Contact Information
- Caregiver Information
- Pets
- Transportation assistance for home evacuation
- Communication Barriers
- Disability, Functional or Medical Needs

All of the information you provide will be kept

**COMPLETELY CONFIDENTIAL**

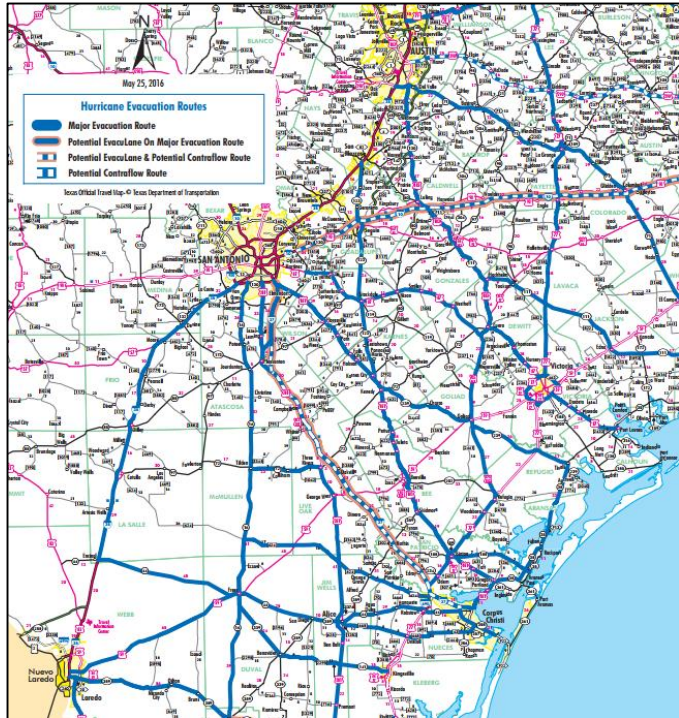


# Evacuation Routes

Evacuees need to consider the projected path of the hurricane when choosing an evacuation route and destination. When evacuating, be sure to check local weather and highway conditions before departing. When local authorities order an evacuation of your area, leave immediately!

## Final Actions before Evacuating

- Follow evacuation orders provided by your local officials.
- Once the evacuation order has been given, **LEAVE IMMEDIATELY!**
- Take your Hurricane Supply Kit with you.
- Leave as early as possible to avoid heavy traffic and hazardous weather.
- Do not stay in a mobile home near the coast under any circumstance.
- Remember that large boats and travel trailers may not be allowed to cross local bridges and causeways once high winds commence.
- Prepare to stay at your evacuation destination for a week or more, as re-entry into the affected area may be restricted.



## Texas Road Information

- TXDOT Highway Conditions 1-800-452-9292 or [www.drivetexas.org](http://www.drivetexas.org)
- TXDOT Corpus Christi Office 1-361-808-2300
- Emergency Broadcast Information KLUX Radio 89.5 FM
- Twitter @TxDOT\_CRP



# Bus Evacuation

**Bus Loading Points will open on an as-needed basis. DO NOT go to Bus Loading Points unless directed to by public officials.**

**For more information regarding the city of Corpus Christi's hurricane evacuation bus assistance plan, please download this [PDF](#).**

## Corpus Christi

Any RTA Bus Stop

Evacuation Hub @ Corpus Christi Gym  
3202 Cabaniss Road  
Corpus Christi, TX 78415

Richard M. Borchard Regional Fairgrounds  
1213 Terry Shamsie Boulevard  
Robstown, TX 78380

## San Patricio

San Patricio County Fairgrounds  
219 W 5th Street  
Sinton, TX 78387

Aransas Pass Civic Center  
700 W Wheeler Avenue  
Aransas Pass, TX 78336

## Victoria

Victoria Community Center  
2905 East North Street  
Victoria, TX 77901

## Kingsville

Kleberg County Courthouse  
700 East Kleberg Avenue  
Kingsville, Texas, 78363

## Aransas County

Live Oak Learning Center  
31 Griffith Drive  
Rockport, Texas 78382

## Port Lavaca

Bauer Community Center  
2300 State Highway 35 North  
Port Lavaca, TX 77979

# Returning Home

**IF YOU EVACUATED THE AREA, WAIT FOR AN ALL CLEAR FROM THE CITY OR COUNTY BEFORE ATTEMPTING TO RETURN TO YOUR HOME. BE PREPARED TO SHOW PROOF OF RESIDENCE BY HAVING A COPY OF YOUR LATEST UTILITY BILL.**

## Debris Cleanup

- Cities and counties will publish a schedule for debris pick-up and removal. Debris cannot be removed from private property.
- Construction materials, vegetative debris, household hazardous waste and household appliances will need to be placed into separate piles and moved to the curbside for pick-up.



FEMA Mike Moore

## General Cleanup

- Be cautious of structural damage and downed power lines.
- DO NOT attempt to move structural supports or large pieces of debris.
- DO NOT run power generators indoors. Inhalation of carbon monoxide from the exhaust can cause death. Ensure exhaust is well ventilated.
- DO NOT use open flames indoors.
- Restrict your driving to emergency use only. Road conditions may not be safe until road debris is cleared.

## Water

- Listen for instructions regarding public water supply. Use only bottled, boiled or treated water until you know that your water supply is safe.
- You can use household chlorine bleach to treat water for drinking or cleaning. Add 1/8 teaspoon of bleach per gallon of clear water or 1/4 teaspoon of bleach per gallon if water is cloudy. Allow water to stand for 30 minutes before using.

## Interior Cleanup

- Disinfect and dry interior buildings and items inside. This will prevent growth of some bacteria, viruses, mold, and mildew that can cause illness.
- Clean walls, floors, and counter tops with soap and water. Disinfect them with a solution of 1 cup of bleach to 5 gallons of water.
- Wash all clothes and linens in hot water. Air dry and spray all unwashable items with disinfectant. Steam clean carpets. Throw away all items touched by water that cannot be disinfected.

# Returning Home

## Utility Cleanup

- Check for gas leaks. If you smell or hear gas leaking, leave immediately. **DO NOT** use the phone or turn on lights in your home. Call the gas company from a neighbor's phone.
- Report any visible damage of power lines to the electric company. Turn off power at main breaker if any electrical equipment or circuits have been exposed to water.
- **DO NOT** connect generators to your home's electrical circuits. If a generator is on line when electrical service is restored, it can become a major fire hazard. Also, line workers working to restore power will be endangered if a generator is hooked up to the home's circuits.
- It is likely that an electric company other than your own will reconnect the lines to your home; however, they cannot turn the service back on. Only your electric company can actually turn the power back on to your house.



## Sewage Cleanup

- If you suspect water or sewage lines are damaged, do not use your plumbing (toilets, sinks, etc.). Contact the water company or a plumber for repairs.
- A chemical portable commode can be created by the following:
  - Use 5 gallon buckets with tight lids, lined with heavy duty plastic garbage bags.
  - Add kitty litter to the bucket as a disinfectant and deodorizer. Keep lids on firmly.
  - Keep buckets in a cool, dark place. Clean and disinfect buckets immediately.
- Your toilet can also be used by flushing until the bowl has no water. Then, line with heavy duty trash bags and disinfect with chlorine bleach after each use. Remove waste to an outside location.
- If significant sewer outages have occurred, instructions for disposal of human wastes will be announced.
- **DO NOT** dispose of human waste through your regular trash!

# Emergency Information

## ARANSAS COUNTY

- **Rockport Police**  
361-729-1111
- **County Sheriff**  
361-729-2222
- **City of Fulton**  
361-729-5533

## BEE COUNTY

- **County Emergency Management**  
361-621-1550 ext. 1  
[www.co.bee.tx.us](http://www.co.bee.tx.us)
- **Beeville Police**  
361-358-8100
- **County Sheriff**  
361-362-3221

## CALHOUN COUNTY

- **County Emergency Management**  
361-553-4400  
[www.calhouncotx.org](http://www.calhouncotx.org)
- **County Sheriff**  
361-553-4646

## GOLIAD COUNTY

- **Goliad County Judge**  
361-645-3337
- **County Sheriff**  
361-645-3451

## JIM WELLS COUNTY

- **County Emergency Management**  
361-668-1018, ext. 8
- **Alice Emergency Management**  
361-664-3111
- **Jim Wells County Sheriff**  
361-668-0341

## KLEBERG COUNTY

- **County Emergency Management**  
361-595-8527
- **County Sheriff**  
361-595-8500

## LIVE OAK COUNTY

- **County Sheriff**  
361-449-2271

## NUECES COUNTY

- **County Emergency Management**  
361-888-0513  
[www.co.nueces.tx.us](http://www.co.nueces.tx.us)
- **City of Corpus Christi**  
361-826-1100  
[Ready Corpus Christi](#)  
Facebook: Ready CC  
Twitter: ReadyCC
- **Port Aransas City Hall**  
361-749-4111  
[www.cityofportaransas.org](http://www.cityofportaransas.org)
- **City of Robstown**  
361-387-2522  
[www.cityofrobstown.com](http://www.cityofrobstown.com)
- **Bishop Police**  
361-584-2443
- **Driscoll Police**  
361-221-2902

## REFUGIO COUNTY

- **County Emergency Management**  
361-526-2820
- **County Sheriff**  
361-526-2351

**Do Not Call 911 for Non-Emergencies!**





# A Look Back at Hurricane Harvey

Over the past several years, meteorologists in South Texas (and other areas) stated "it's not a matter of if but when," a major hurricane would strike the Middle Texas Coast. Previously, the last major hurricane to do so was Hurricane Celia back on August 3, 1970. Well, the "when" happened on August 25, 2017, as Category 4 Hurricane Harvey made landfall along the Middle Texas Coast near Rockport and Fulton.

The origins of Hurricane Harvey began on Sunday, August 13, 2017 as a tropical wave that developed off the west coast of Africa. The system remained on a westward course across the open Atlantic Ocean moving toward the Eastern Caribbean Sea. By Thursday, August 17, that National Hurricane Center began issuing advisories for Tropical Storm Harvey during the afternoon. Harvey impacted the Windward Islands on Friday, August 18, but then weakened into a tropical wave late Saturday evening. The remnants of Harvey slowly moved westward across the western Caribbean Sea, but failed to reorganize into a tropical system as it crossed the Yucatan Peninsula on August 22. However, the National Hurricane Center was confident the system would redevelop as it moved into the very warm waters of the Bay of Campeche and western Gulf of Mexico. Tropical Depression Harvey reformed on August 23, but the system began to strengthen quickly as wind shear relaxed over the western Gulf of Mexico. On Thursday, August 24, forecasts became more dire as computer models now suggested Harvey would make landfall as a major hurricane. The rapid intensification did occur on Friday, August 25, and Harvey strengthened into a Category 3 hurricane early in the afternoon. Hurricane Harvey became a Category 4 hurricane with winds of 130 mph early Friday evening, and made landfall first along San Jose Island and then near Rockport and Fulton around 10:00 P.M.

The most catastrophic damage was in Rockport and Fulton where the extreme winds associated with Harvey's eyewall occurred. Structures, residences, and businesses were either severely damaged or destroyed, crippling the area's infrastructure. Significant damage was also seen across other Middle Texas Coastal communities such as Copano Village, Port Aransas, Aransas Pass, Refugio, and Ingleside. Corpus Christi only experienced strong tropical storm force winds, resulting in sporadic tree, fence, and roof damage. Storm surge inundation from Hurricane Harvey peaked around 10 feet above ground level at Aransas Wildlife Refuge and Port Lavaca, with 3 to 6 feet of inundation elsewhere across the Middle Texas Coast.

After landfall, Hurricane Harvey stalled across South and Southeast Texas for several days, which resulted in historic flash flooding and river flooding. The brunt of the heavy rainfall fell over Southeast Texas, including the cities of Houston, Galveston, and Beaumont.

For more in-depth information on this hurricane, please visit our [Hurricane Harvey webpage](#). You can also visit Hurricane Harvey pages from the NWS in [San Antonio](#), [Houston](#), and [Lake Charles](#).



*Left:* Damage to a boat hangar in Rockport from Hurricane Harvey. Photo from NWS Storm Survey. *Center:* Significant damage in Port Aransas from Hurricane Harvey's wind and storm surge. Photo from NWS Storm Survey. *Right:* Aerial photo of destroyed water tower in Aransas Pass. Photo from City Officials at Aransas Pass.

## National Weather Service WFO Corpus Christi, TX

426 Pinson Drive  
Corpus Christi, TX 78406

Phone: 361-289-0959

Fax: 361-289-7823



[www.weather.gov/corpuschristi](http://www.weather.gov/corpuschristi)



# BECOME A WEATHER-READY NATION AMBASSADOR™ TODAY!

Weather-Ready Nation (WRN) Ambassadors inspire others to be a force of nature by being ready, responsive, and resilient to the dangerous impacts of extreme weather.

- 1 Visit: [www.weather.gov/wrn/ambassadors](http://www.weather.gov/wrn/ambassadors)
- 2 To become an Ambassador, click this [link](#)
- 3 Accept the Terms of Use of the Weather-Ready Nation Ambassadors™ Logo and Service Mark
- 4 Fill out the WRN Ambassador Application