



# Drought Information Statement for Southeast Wyoming and the Nebraska Panhandle

Valid September 23, 2024

Issued By: WFO Cheyenne, WY

Contact Information: [nws.cheyenne@noaa.gov](mailto:nws.cheyenne@noaa.gov)

- This product will be updated October 23, 2024 or sooner if drought conditions change significantly.
  - Please see all currently available products at <https://drought.gov/drought-information-statements>.
  - Please visit <https://www.weather.gov/cys/DroughtInformationStatement> for previous statements.
  - Please visit <https://www.drought.gov/drought-status-updates> for regional drought status updates.
- 
- Extreme (D3) Drought has been introduced to portions of Platte and Goshen counties and continued in Converse and Niobrara Counties
  - Moderate (D1) to Severe (D2) Drought remains for much of east central Wyoming and northwest Nebraska
  - Below-normal rainfall across most of the area helped worsen or sustain drought status



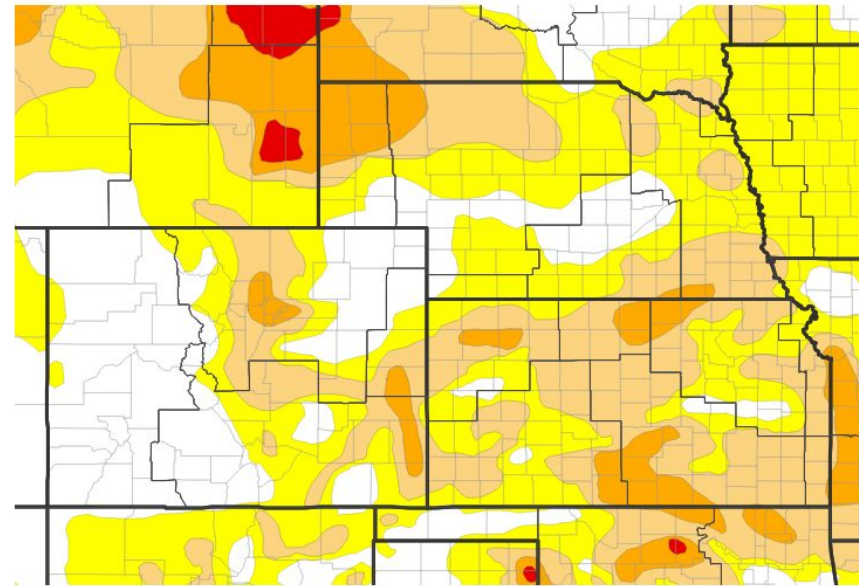


# U.S. Drought Monitor

Link to the [latest U.S. Drought Monitor](#) for the High Plains

- Drought intensity and Extent
  - **D4 (Exceptional Drought)**: None occurring.
  - **D3 (Extreme Drought)**: Northeast Converse County, northwest Niobrara County, east-central Platte County, and west-central Goshen County.
  - **D2 (Severe Drought)**: All of Dawes County and most of Converse, Niobrara, Platte, Goshen, Sioux, and Box Butte Counties.
  - **D1 (Moderate Drought)**: Most of east central Wyoming and the central/northern Nebraska panhandle.
  - **D0: (Abnormally Dry)**: Most of southeast Wyoming and the southern Nebraska panhandle, with the exception of parts of Carbon, Kimball, Cheyenne, and Morrill counties.

U.S. Drought Monitor



U.S. Drought Monitor



Source(s): NDMC, NOAA, USDA; image courtesy of Drought.gov

Data Valid: 09/17/24



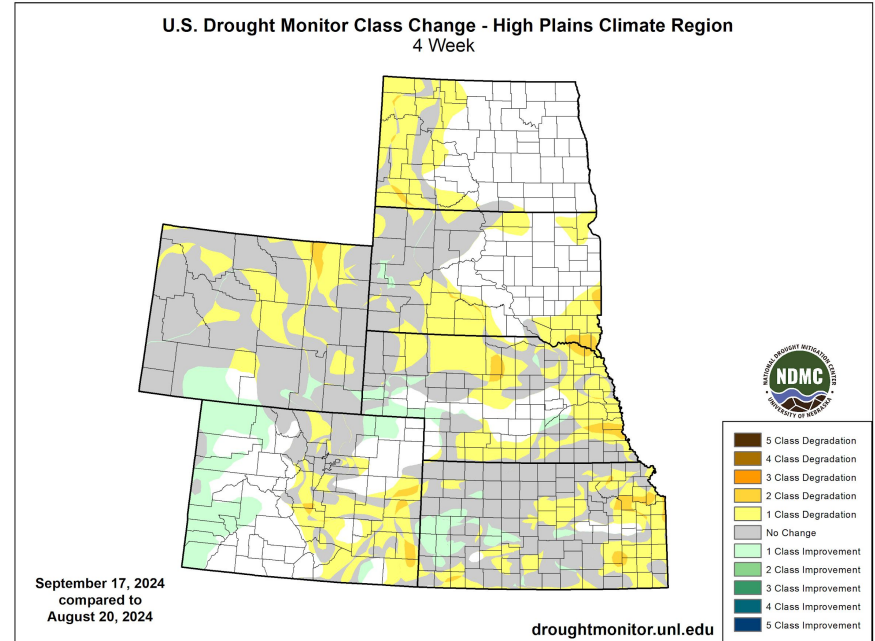


# Recent Change in Drought Intensity

Link to the latest [4-week change map](#) for the High Plains

- **Four Week Drought Monitor Class Change**

- **Drought Worsened:** Eastern Dawes and Box Butte Counties, east-central Platte County, west-central Goshen County. Small parts of Converse County and Carbon County.
- **No Change:** Most of Carbon, Albany, Platte, Goshen, Laramie, Niobrara, Scottsbluff, Morrill, Kimball, and Sioux counties. Western Dawes, and Box Butte counties
- **Drought Improved:** Parts of Carbon, Albany, Laramie, Kimball, Banner, Morrill, and Cheyenne counties



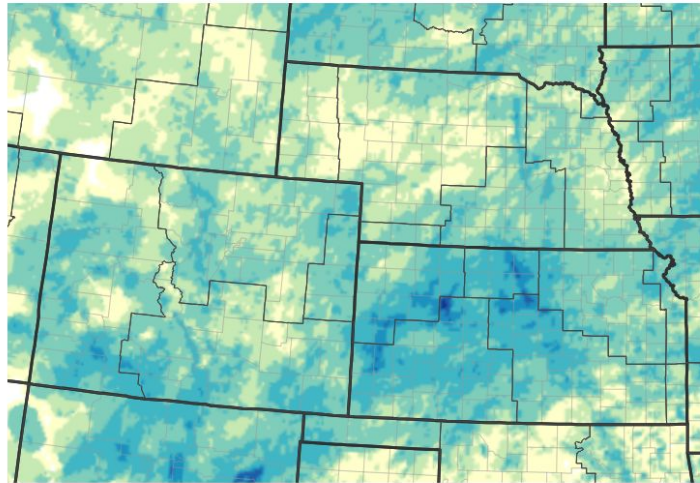


# Precipitation

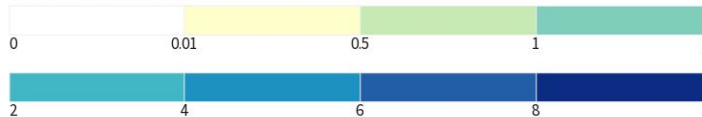
Precipitation was above normal over the last 30 days for central Albany County and in small pockets elsewhere in the area

Precipitation was below normal over the last 30 days over most of the Nebraska panhandle, most of Converse, Niobrara, Platte, Goshen, and Carbon counties, and most of Laramie County

NWPS 30-Day Precipitation Accumulations (inches)



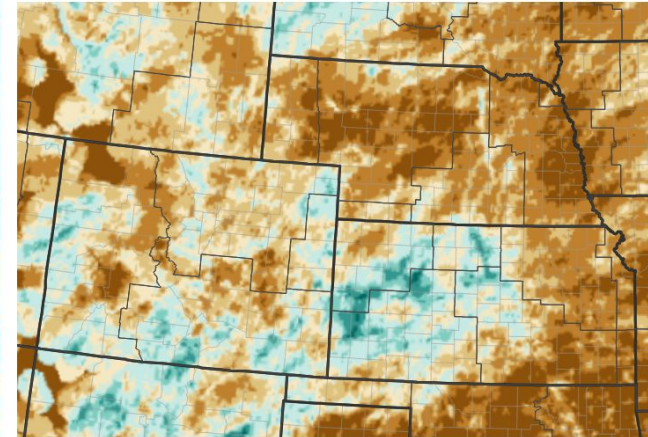
Inches of Precipitation



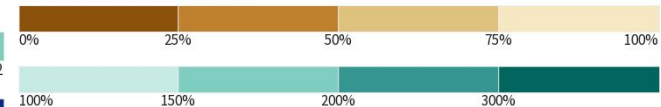
Source(s): National Weather Service National Water Prediction Service; image courtesy of Drought.gov

Data Valid: 09/22/24

30-Day Precipitation: Percent of PRISM Normal



Percent of Normal Precipitation (%)



Source(s): National Weather Service National Water Prediction Service; image courtesy of Drought.gov

Data Valid: 09/22/24





# Summary of Impacts

Links: See/submit [Condition Monitoring Observer Reports \(CMOR\)](#) and view the [Drought Impacts Reporter](#)

## Hydrologic Impacts

- Most streams and rivers are near normal for this time of year. Additional information from the USGS can be found [here](#).

## Agricultural Impacts

- [Crop moistures](#) are abnormally to excessively dry for most of the area. Visit the attached links for USDA Crop Progress and Conditions reports for [Wyoming](#) and [Nebraska](#).

## Fire Hazard Impacts

- Above normal wildland fire potential expected in September for east central Wyoming. Near normal wildland fire potential is expected in September for the remainder of the area. The most recent significant wildland fire potential outlook can be found [here](#).

## Other Impacts

- There are no known impacts at this time

## Mitigation Actions

- Please refer to your municipality and/or water provider for mitigation information.



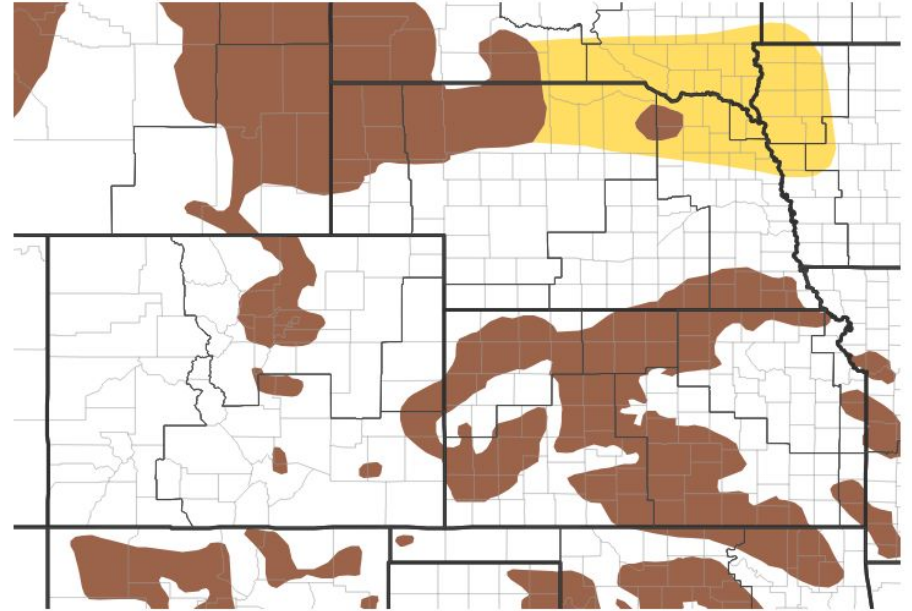


# Drought Outlook

The latest monthly and seasonal outlooks can be found on the [CPC homepage](#)

- Through the month of September, drought conditions are expected to persist for most of east-central Wyoming and the northern Nebraska panhandle

## 1-Month Drought Outlook for September 1, 2024-September 30, 2024



### Drought Is Predicted To...



Source(s): Climate Prediction Center image courtesy of Drought.gov

Last Updated: 08/31/24

Links to the latest:

[Climate Prediction Center Monthly Drought Outlook](#)

[Climate Prediction Center Seasonal Drought Outlook](#)

