



Drought Information Statement for NE Minnesota & NW Wisconsin

Valid February 13, 2026

Issued By: NWS Duluth, MN

Contact Information:

- Next Update: Friday, March 13, 2026
- Please see all currently available products at <https://drought.gov/drought-information-statements>.
- Please visit <https://www.weather.gov/DLH/DroughtInformationStatement> for previous statements.
- Please visit <https://www.drought.gov/drought-status-updates/> for regional drought status updates.

- **Most of the Northland is in Moderate (D1) or Severe (D2) Drought conditions as of mid February.**
- **Drought conditions have remained unchanged over the last week.**





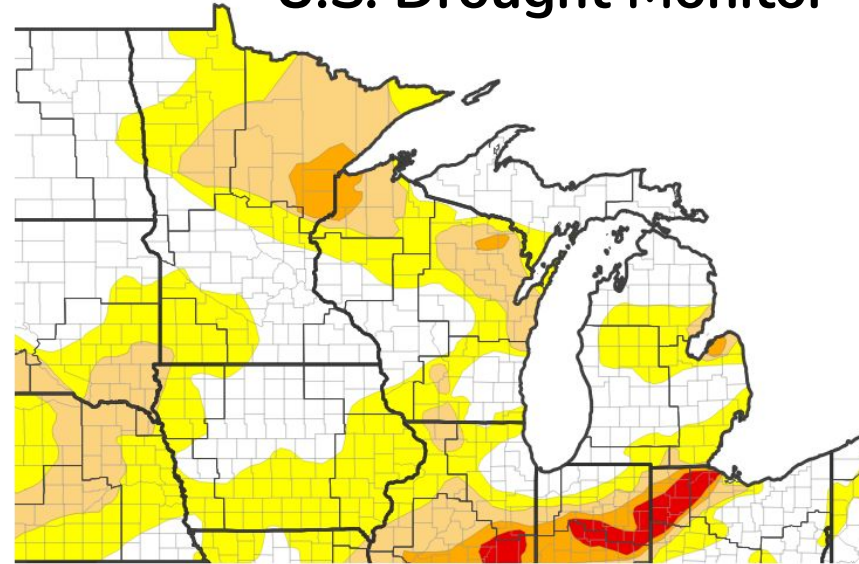
U.S. Drought Monitor

Link to the [latest U.S. Drought Monitor](#) for the Northland

- Drought intensity and Extent
 - **D2 (Severe Drought)**: Pine, Carlton, southern St. Louis, east Aitkin, north Burnett and most of Douglas counties.
 - **D1 (Moderate Drought)**: Nearly all of the rest of the area.
 - **D0: (Abnormally Dry)**: Pockets of Borderlands, Tip of Arrowhead, far southern Crow Wing / Cass County, Iron and Price counties, and east Ashland County.

U.S. Drought Monitor

U.S. Drought Monitor



U.S. Drought Monitor



Source(s): NDMC, NOAA, USDA, NASA; image courtesy of Drought.gov

Data Valid: 02/10/26



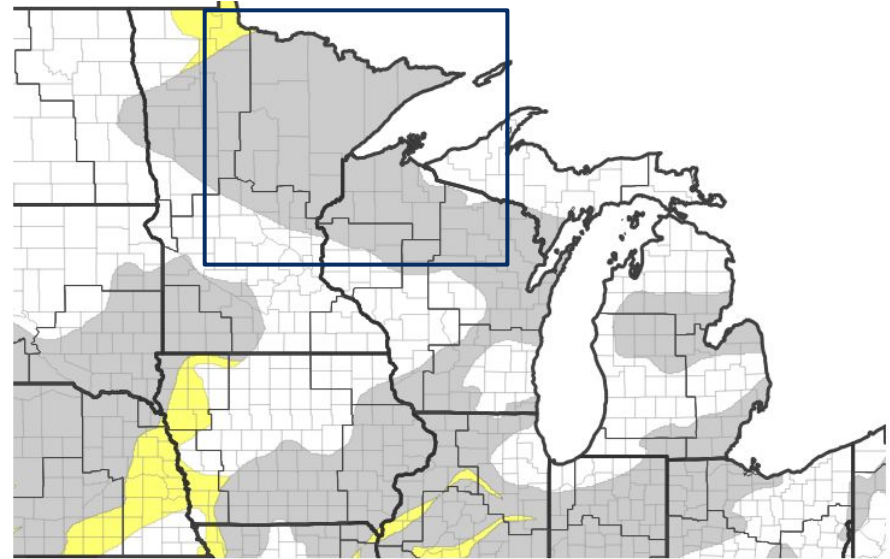


Recent Change in Drought Intensity

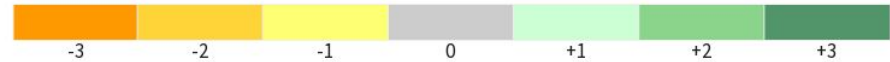
Link to the latest [4-week change map](#) for NE Minnesota and NW Wisconsin

- One Week Drought Monitor Class Change.
 - Drought Worsened: Far northwestern tip of Koochiching County.
 - No Change: Remainder of the area.
 - Drought Improved: Not applicable

U.S. Drought Monitor Class Change 1 Week



Drought Change Since Last Week



Source(s): NDMC, NOAA, USDA, NASA; image courtesy of Drought.gov

Data Valid: 02/10/26



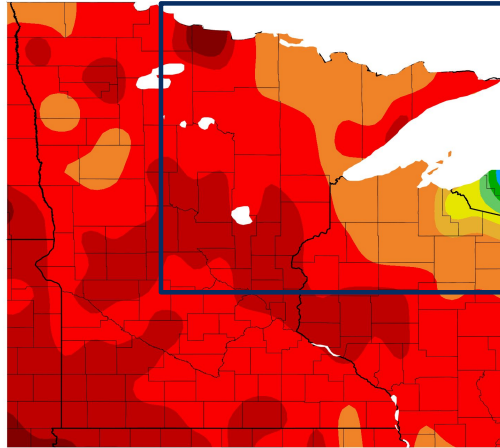


Precipitation

Precipitation (sum of liquid and melted frozen) that was observed in the Northland over the last month

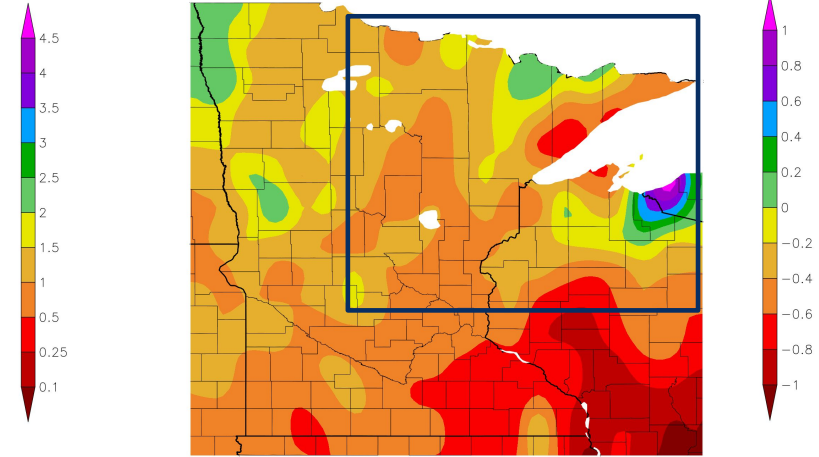
- Regional precipitation in the past month is 0.25-0.75” below normal for much of the Northland
- Exception is Borderlands and north central Wisconsin snow belt.

Precipitation (in)
1/13/2026 – 2/11/2026



Generated 2/12/2026 using provisional data.

Departure from Normal Precipitation (in)
1/13/2026 – 2/11/2026



ACIS Web Service generated 2/12/2026 using provisional data.

ACIS Web Service



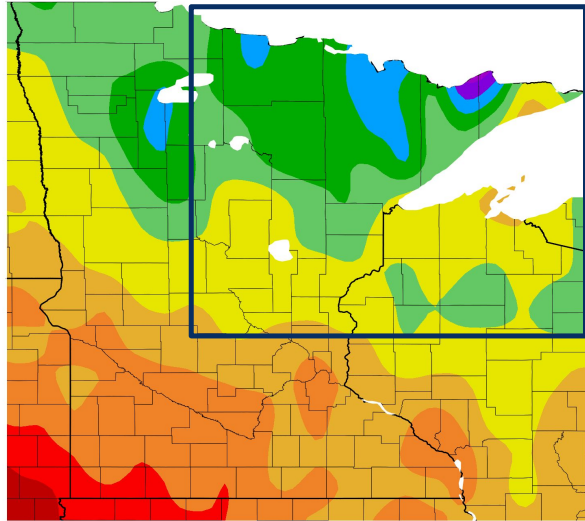


Temperature

Temperatures that were observed in the Northland over the last month

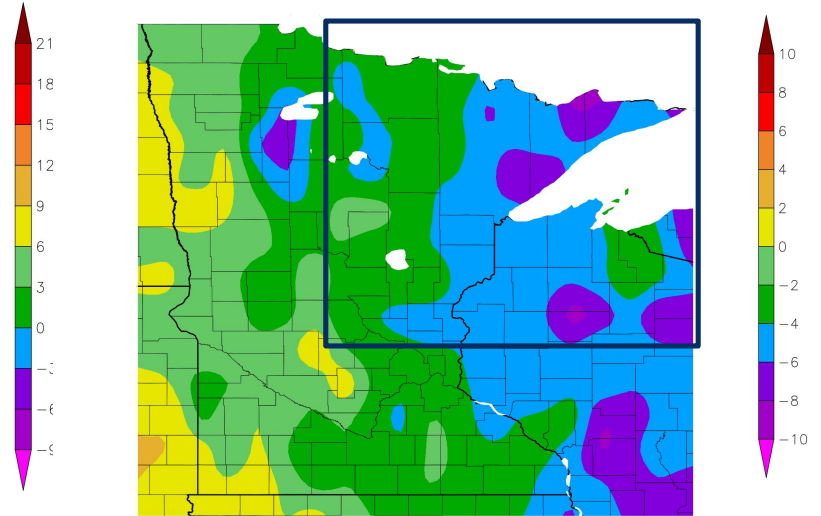
- Average temperatures have been 2 to 8 degrees below normal for most of the area over the past month.

Temperature (F)
1/13/2026 - 2/11/2026



dated 2/12/2026 using provisional data.

Departure from Normal Temperature (F)
1/13/2026 - 2/11/2026



dated 2/12/2026 using provisional data.
ACIS Web Ser

ACIS Web Services





Summary of Impacts

Links: See/submit [Condition Monitoring Observer Reports \(CMOR\)](#) and view the [Drought Impacts Reporter](#)

Hydrologic Impacts

- Streamflows are largely running below normal in north-central Minnesota and the Borderlands and near normal in portions of west/northwest Wisconsin where streams are not frozen over. ([USGS Streamflow](#)).

Other Impacts

- Unknown at this time.

Mitigation Actions

- Unknown at this time.





Hydrologic Conditions and Impacts

- Streams are running below normal for much of north-central Minnesota and the Borderlands where streams are not frozen over.
- Streams are running near normal in portions of western/inland northwest Wisconsin where streams are not frozen over.

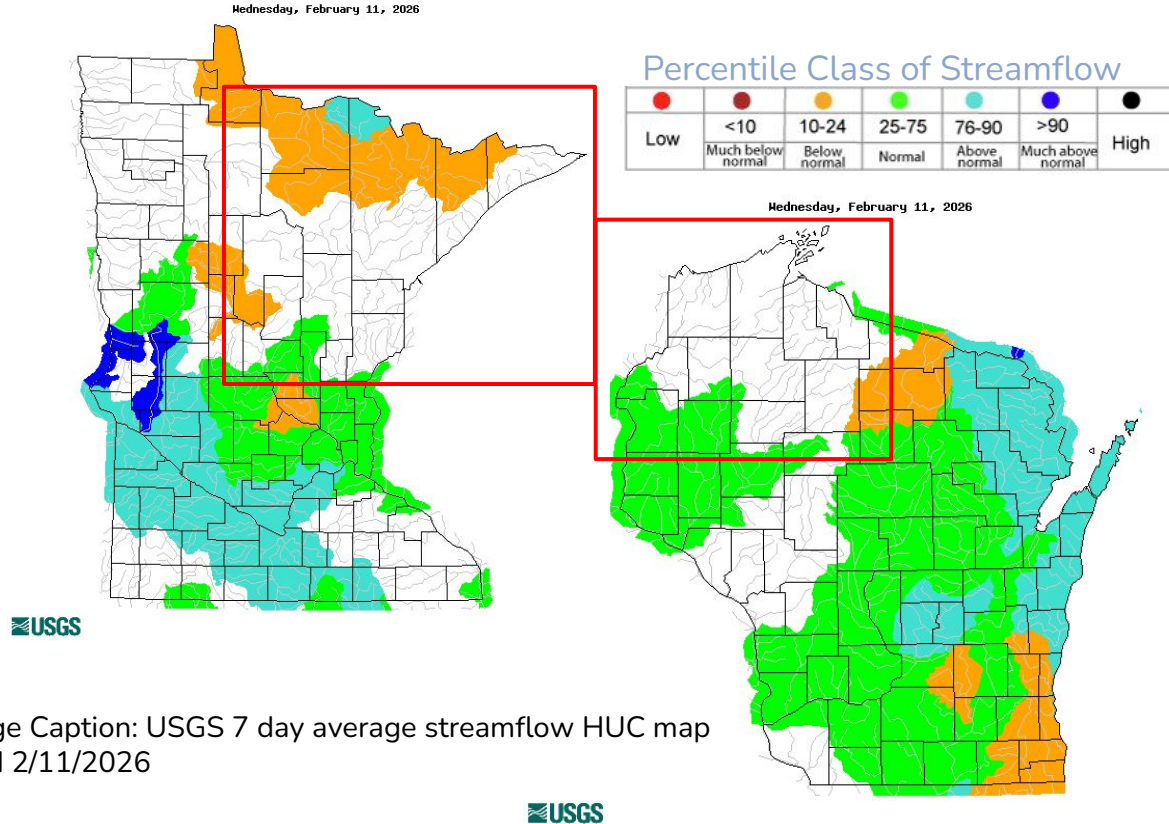


Image Caption: USGS 7 day average streamflow HUC map valid 2/11/2026





Rapid Onset Drought Outlook

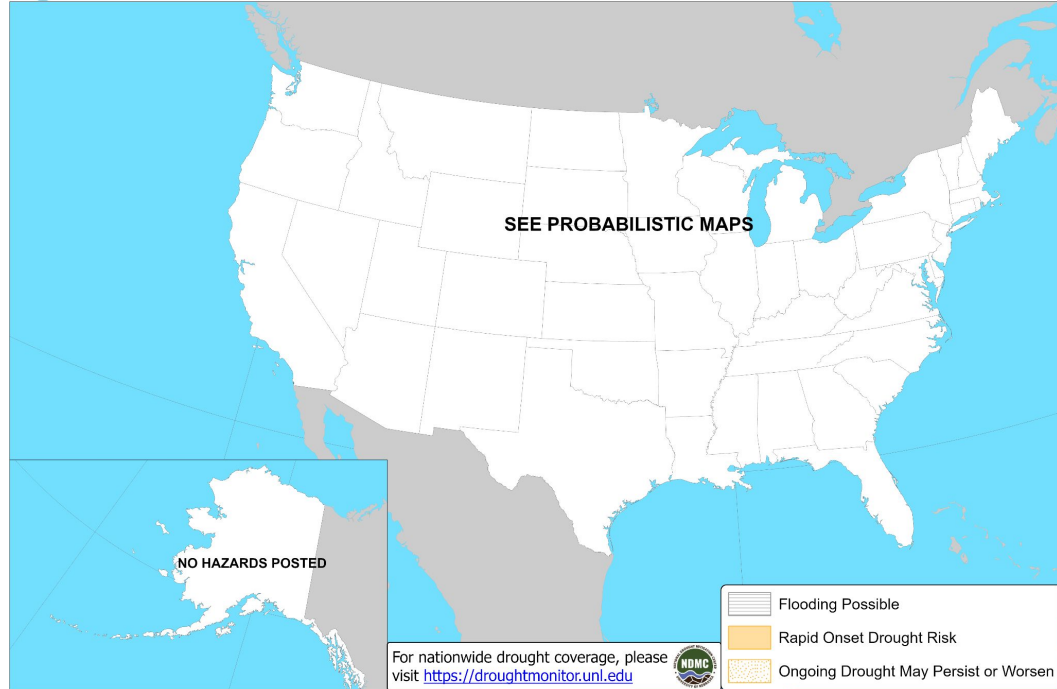
Links to the latest Climate Prediction Center 8 to 14 day [Temperature Outlook](#) and [Precipitation Outlook](#).

- No rapid onset drought expected.



Days 8-14 U.S. Hazards Outlook

Valid: January 19 - 25, 2026



Climate Prediction Center

Released: January 11, 2026 3:00 PM EST

Follow us:

www.cpc.ncep.noaa.gov



National Oceanic and Atmospheric Administration
U.S. Department of Commerce

National Weather Service
Duluth, MN