

## Survey Completed in Pocahontas County

...FINAL DAMAGE SURVEY RESULTS FOR POCAHONTAS COUNTY...

...EF1 TORNADO IN POCAHONTAS...

THE FOLLOWING IS A FINAL ASSESSMENT FOR THE DAMAGE THAT OCCURRED OVER POCAHONTAS COUNTY ON JULY 22, 2010.

- \* EVENT DATE: JULY 22, 2010
- \* ESTIMATED START TIME: 2:38 AM CDT
- \* EVENT TYPE: (EF1) TORNADO
- \* EVENT LOCATION: THE TORNADO TOUCHED DOWN 1 MILE SOUTH OF POCAHONTAS NEAR HIGHWAY 4. THE TORNADO TRAVELED 2.6 MILES ON THE GROUND AND LIFTED JUST NORTHEAST OF THE GOLF COURSE AND PRIOR TO THE AIRPORT. THE TORNADO WAS DESCRIBED AS DIFFUSE IN NATURE.
- \* PEAK WIND: 100 MPH
- \* AVERAGE PATH WIDTH: 500 YARDS WIDE BUT DIFFUSE
- \* PATH LENGTH: 2.6 MILES
- \* INJURIES: NONE
- \* FATALITIES: NONE
- \* DISCUSSION/DAMAGE: DAMAGE OCCURRED TO THE PRO-COOP AND TO THE LOCAL SALE BARN. THE COOP SUFFERED PARTIAL STRUCTURE COLLAPSE AND THE ROOF AND CEILING LIFTED OFF THE STRUCTURE. AT THE SALE BARN MACHINERY AND CARTS WERE CARRIED ALOFT BOTH WEST AND NORTHWEST OF THE LOCATION DUE TO THE CIRCULATION OF THE TORNADO. THE WALLS OF THE BARN WERE ALSO DAMAGED BY THE TORNADO. THREE TO FOUR FOOT DIAMETER TREES WERE ALSO UPROOTED AND DOWN IN THE POCAHONTAS CEMETERY. THE TORNADO LIFTED OFF THE GROUND AT APPROXIMATELY 2:41 AM CDT.

&&

FOR REFERENCE...THE ENHANCED FUJITA TORNADO SCALE CLASSIFIES TORNADOES INTO THE FOLLOWING CATEGORIES:

- EF0...WIND SPEEDS 65 TO 85 MPH.
- EF1...WIND SPEEDS 86 TO 110 MPH.
- EF2...WIND SPEEDS 111 TO 135 MPH.
- EF3...WIND SPEEDS 136 TO 165 MPH.
- EF4...WIND SPEEDS 166 TO 200 MPH.
- EF5...WIND SPEEDS GREATER THAN 200 MPH.

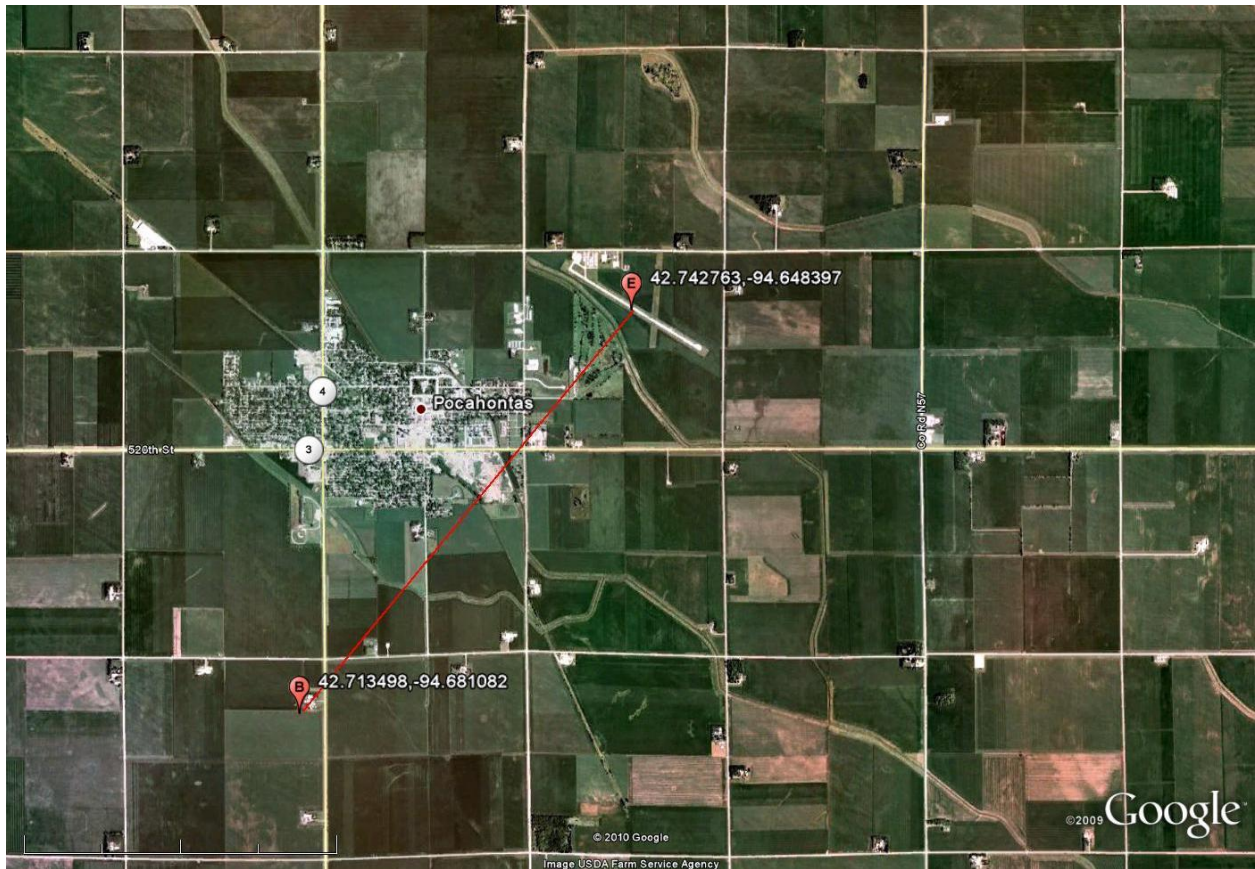


Figure 1. The locator B represents the beginning of the storm damage path and the E represents the end of the storm damage path.

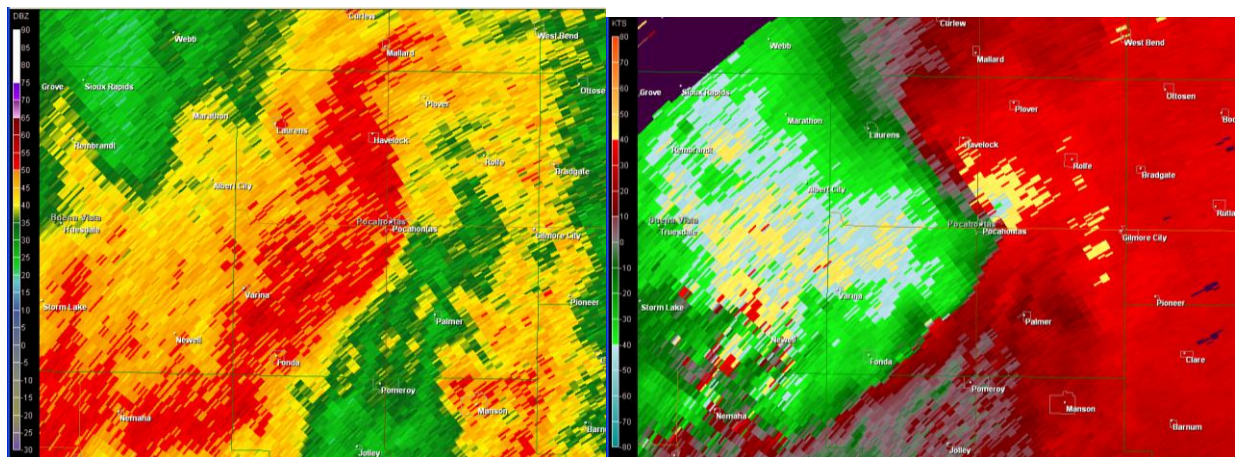


Figure 2. The left image shows the KDMX 0.5 degree radar reflectivity at 241 am CDT on July 22, 2010 with a definitive bow structure moving over Pocahontas. The right image shows the corresponding KDMX 0.5 degree storm relative motion velocity indicating a strong circulation just passing over Pocahontas several thousand feet above the ground.



Figure 3. A building with roof damage near on the south end of Pocahontas.





Figure 4. A large tree uprooted on the south end of Pocahontas.



Figure 5. Large trees snapped off near cemetery in southeast Pocahontas.





Figure 6. The end of this Quonset hut was blown out and was found laying flat on the ground. Workers had attempted to place the wall back in the vertical position by the time the photo was taken.



Figure 7. The cinder block wall of this building collapsed and the roof was torn off the side of the parent building in eastern Pocahontas.