

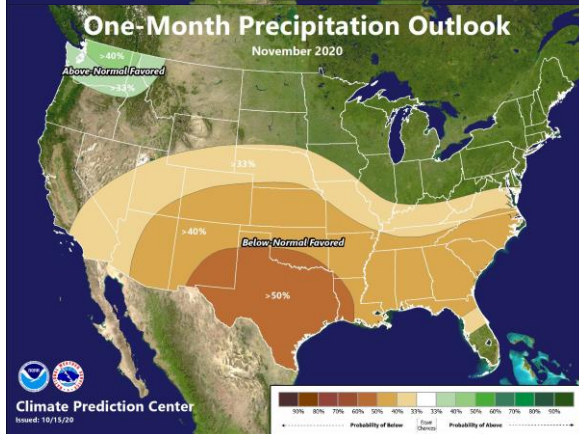
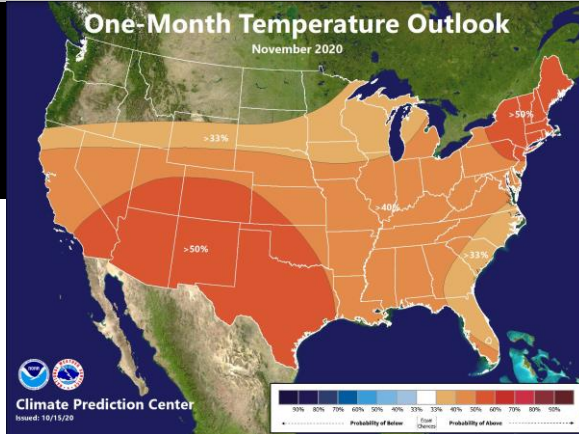


✓ Important Message: La Niña Advisory in Effect

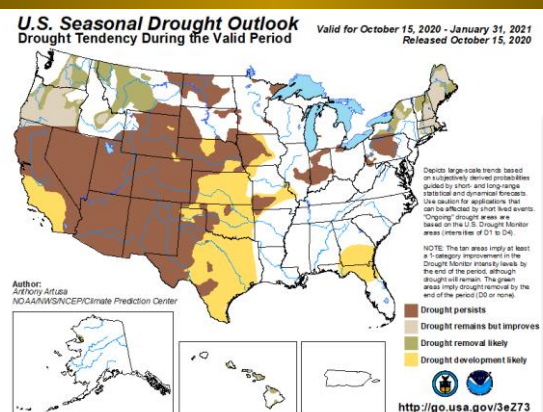
- ✓ La Niña conditions continue to strengthen, and a moderate event is expected, though a strong event remains possible. This will play an increasing role in the seasonal forecasts heading into the winter months.
- ✓ A majority of models predict this La Niña event will peak in intensity during the Nov-Jan season, and then weaken into the 2021 Spring season.

November 2020 Temperature & Precipitation Outlooks

- Above normal temperatures are favored across all of Central Region, with the exception of North Dakota, parts of South Dakota as well as northern MN, where equal chances are forecast. This is largely due to the background state of La Niña being incorporated into the forecast.
- Below normal precipitation is favored over the southern half of Central Region. Equal chances are forecast across the northern Plains eastward into the Great Lakes region. This is consistent with model guidance and the influence from La Niña.



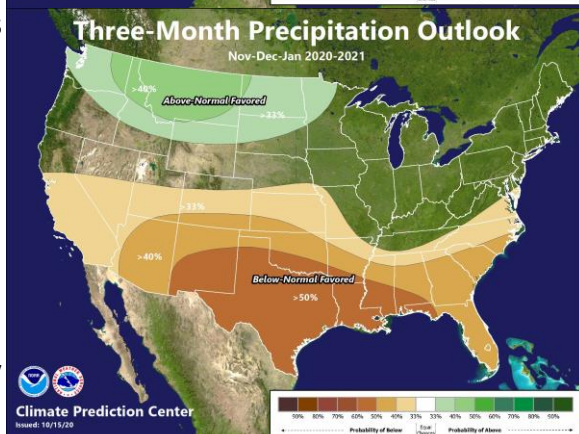
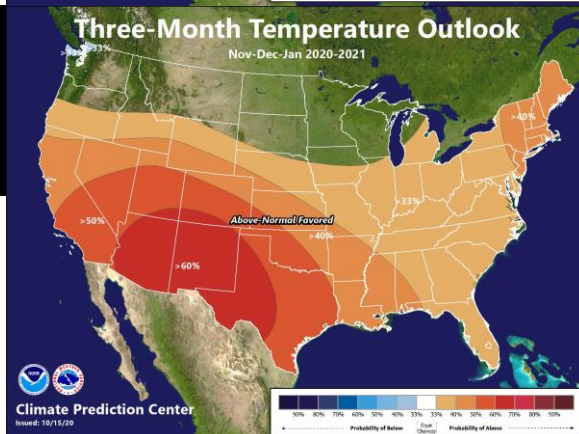
Seasonal Drought Outlook



Drought conditions have remained largely status quo. Severe or greater drought continues to cover 25% of the country. Given that we are approaching the climatological annual minimum in precipitation across the central US, it is likely that drought will persist and even expand, especially over the western half of Central Region.

Nov 2020 through Jan 2021 Temperature & Precipitation Outlooks

- Above normal temperatures are favored across the southern half of Central Region. Equal chances are forecast from the Dakotas eastward through the Great Lakes, though chances start to favor colder conditions across the northern Plains into the winter season as a result of La Niña.
- Above normal precipitation is favored for much of the Dakotas eastward into parts of MN, with below normal precipitation favored over southern parts of Central Region. Equal chances are forecast across the Great Lakes. This is largely based on the influence from La Niña.

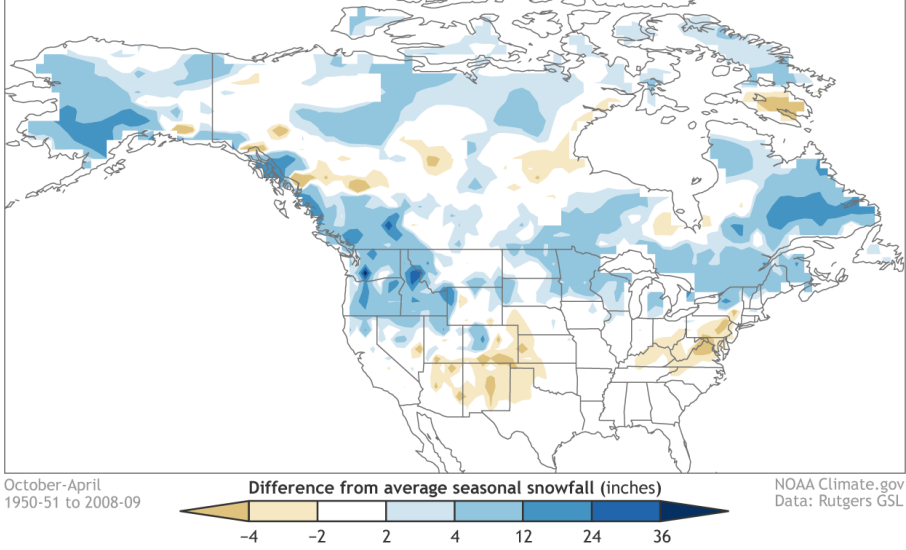




ENSO Status: *La Niña Advisory*

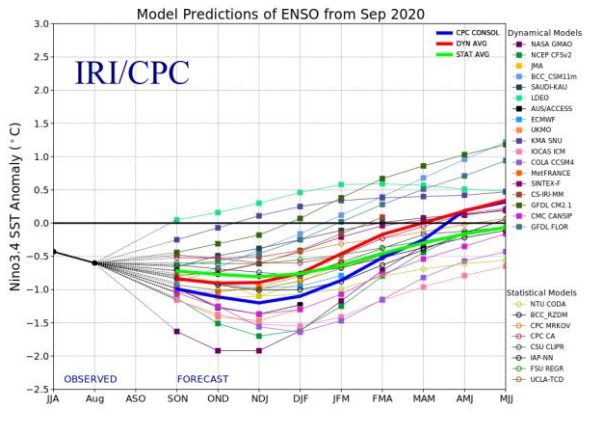
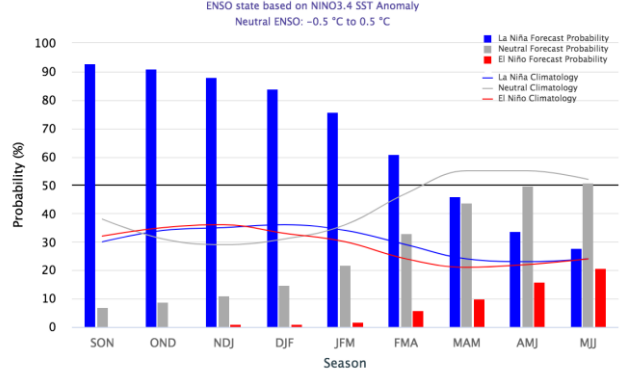
IRI/CPC Probabilistic ENSO Forecast/Plumes

Average snowfall patterns for all La Niña years



The typical northward shift of the storm track with La Niña favors increased snowfall over the northern CONUS from the northern Rockies through the upper Midwest and Great Lakes region. However, farther south, the tendency for warmer and drier winters typically favors lower snowfall.

Early-October 2020 CPC/IRI Official Probabilistic ENSO Forecasts



- Consolidated and Multi Model Ensembles are both indicative of a moderate La Niña event.
- La Niña is likely to peak during the Nov-Jan season, then begin to weaken.
- The chances begin to favor ENSO neutral conditions again by late spring.

Useful Links/Info:

- News from [Climate.gov](https://www.climate.gov)
- [Latest ENSO Blog](#) from Climate.gov
- [Sea Surface Temperatures](#) from the Climate Prediction Center
- [Latest ENSO Discussion](#) from the Climate Prediction Center
- [Drought Information](#) from the US Drought Monitor
- [Interactive GIS Mapping](#) from NCEI (Anomalies/Rankings)
- [Local Climate Analysis Tool \(LCAT\)](#) – Account registration required
- [NWS Forecast Maps](#) from Western Region

Other Teleconnection Effects

- MJO conditions are not expected to play a major role in the monthly forecast due to the impact of the maturing La Niña.

