

U.S. NATIONAL WEATHER SERVICE

EMWIN Image and Text Data Capture Catalog

Version 1.0

Document Control

Version Number	Version Description	Author(s)	Date Completed
V 0.1	Initial Document Draft	Gillespie	09/14/2016
V 1.0	Adds title page and Document Control page. Modifies the assigned product header and priority of the Atlantic and Eastern Pacific Basin Tropical Storm Products from NHC.	Gillespie	03/01/2017

This document is controlled by the Dissemination Systems Team (DST), Office of Dissemination, US National Weather Service. Any comments or corrections to this release should be addressed to: nws.emwin.support@noaa.gov

1. **Overview.** The Emergency Managers Weather Information Network (EMWIN) File Image and Text Data Capture Catalog lists the text and image files disseminated by EMWIN. This document defines the “EMWIN broadcast product baseline” by the list of products contained herein. These products are captured by EMWIN from remote web sites and intended for public dissemination to provide user a heightened sense of situational awareness with regard to weather and water conditions and forecasts. The products described in this document are accessible by the general public, providing they have the commercial systems and services necessary to receive and display the product(s). The products are not encrypted.

2. **Catalog Format.** The product listing includes the following elements/characteristics:

- a. Title
- b. Uniform Resource Locator (URL), or file source web address”¹
- c. GOES-N series satellite EMWIN broadcast filename
- d. GOES-R series satellite High Rate Information Transmission (HRIT)/EMWIN broadcast filename²
- e. Description of the World Meteorological Organization (WMO) abbreviated header fields
- f. EMWIN message priority
- g. Visual representation of a typical image contained in the file

Note 1: The public also has the option to directly access the products over the Internet by visiting the product URL. There is however, no assurance that the listed URLs will remain open for public access in the future. Public access to these URLs is controlled by the owning organizations.

*Note 2: The “EMWIN GOES-R Filename Convention Document” is found here:
<http://www.nws.noaa.gov/emwin/index.htm#documents>*

3. **Product Baseline Management.**

a. The EMWIN Program Office, Dissemination Systems Team (DST), Office of Dissemination, US National Weather Service, maintains this product listing and is the authority for make changes to the product set and individual product descriptions.

b. Questions, comments and recommendations regarding this publication and the product set may be forwarded to the following email for review and consideration:

nws.emwin.support@noaa.gov

4. Abbreviations

Abbreviation	Explanation
DST	Dissemination Systems Team
EMWIN	Emergency Managers Weather Information Network
GOES	Geostationary Operational Environmental Satellite
HRIT	High Rate Information Transmission
NOAA	National Oceanic and Atmospheric Administration
URL	Uniform Resource Locator
US	United States of America
WMO	World Meteorological Organization

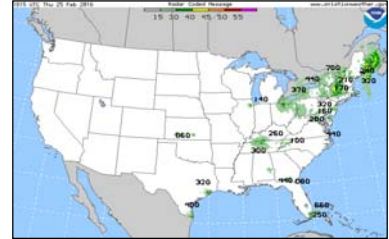
*** remaining page intentionally blank ***

5. EMWIN Image and Text Data Capture Products

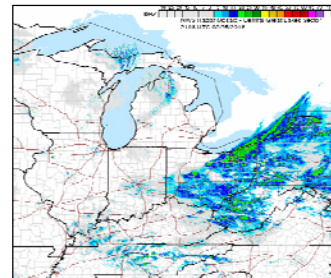
Title-01: Weather Satellite Ephemerides
URL: <http://celestrak.com/NORAD/elements/weather.txt>
GOES-N fn ephtwous.txt
GOES-R fn Z_NOXX10KWBCddhhmm_C_KWIN_yyyyMMddhhmmss_nnnnnn-4-EPHTWOUS.TXT
 "Z" Originating center local product identifier
 T1 N - Notices
 T2 O - METNO/WIFMA
 A1A2 XX - For use when other designators are not appropriate
 ii 10 - (arbitrary)
 Pri 4
 Note * Used together with NORAD's SGP4/SDP4 orbital model to determine the position and velocity of the named satellite.

METEOSAT-7
 1 24932U 97049B 16062.50875964 ...
 2 24932 10.0557 41.6922 0001990 ...
 NOAA 15
 1 25338U 98030A 16062.54962326 ...
 2 25338 98.7829 66.4887 0011450 ...
 METEOSAT-8 (MSG-1)
 1 27509U 02040B 16062.14401054 ...
 2 27509 4.0124 60.1514 0001744 ...
 KALPANA-1 (METSAT 1)
 :

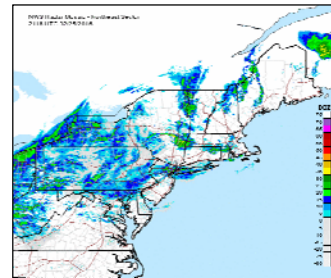
Title-02: US Radar Cloud Tops
URL: http://aviationweather.gov/data/obs/radar/rcm_sm_tops.gif
GOES-N fn radallus.gif
GOES-R fn Z_QATA00KKCIddhhmm_C_KWIN_yyyyMMddhhmmss_nnnnnn-3-RADALLUS.GIF
 "Z" Originating center local product identifier
 T1 Q - Pictorial information regional (Binary coded)
 T2 A - Radar data
 A1 T - 45°W - 180° northern hemisphere
 A2 A - Analysis (00 hour)
 ii 00 - Entire atmosphere (eg precipitable water)
 Pri 3



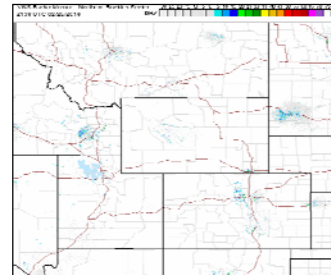
Title-03: US Radar Mosaic - Great Lakes Sector [NWS]
URL: <http://radar.weather.gov/Conus/RadarImg/centgrtlakes.gif>
GOES-N fn radgrtlk.gif
GOES-R fn Z_QATA00KWBCddhhmm_C_KWIN_yyyyMMddhhmmss_nnnnnn-3-RADGRTLK.GIF
 "Z" Originating center local product identifier
 T1 Q - Pictorial information regional (Binary coded)
 T2 A - Radar data
 A1 T - 45°W - 180° northern hemisphere
 A2 A - Analysis (00 hour)
 ii 00 - Entire atmosphere (eg precipitable water)
 Pri 3



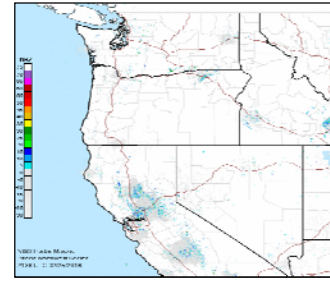
Title-04: US Radar Mosaic - Northeast Sector [NWS]
URL: <http://radar.weather.gov/Conus/RadarImg/northeast.gif>
GOES-N fn radnthes.gif
GOES-R fn Z_QATA00KWBCddhhmm_C_KWIN_yyyyMMddhhmmss_nnnnnn-3-RADNTHES.GIF
 "Z" Originating center local product identifier
 T1 Q - Pictorial information regional (Binary coded)
 T2 A - Radar data
 A1 T - 45°W - 180° northern hemisphere
 A2 A - Analysis (00 hour)
 ii 00 - Entire atmosphere (eg precipitable water)
 Pri 3



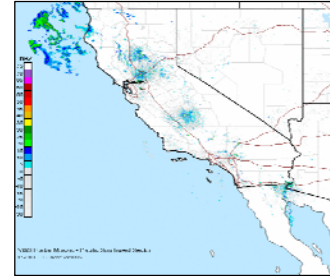
Title-05: US Radar Mosaic - Northern Rockies Sector [NWS]
URL: <http://radar.weather.gov/Conus/RadarImg/northrockies.gif>
GOES-N fn radrcknt.gif
GOES-R fn Z_QATA00KWBCddhhmm_C_KWIN_yyyyMMddhhmmss_nnnnnn-3-RADRCKNT.GIF
 "Z" Originating center local product identifier
 T1 Q - Pictorial information regional (Binary coded)
 T2 A - Radar data
 A1 T - 45°W - 180° northern hemisphere
 A2 A - Analysis (00 hour)
 ii 00 - Entire atmosphere (eg precipitable water)
 Pri 3



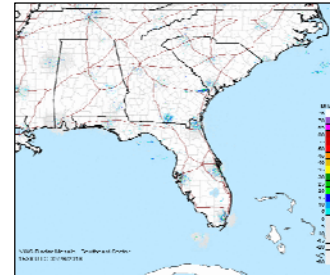
Title-06: US Radar Mosaic - Pacific Northwest Sector [NWS]
URL: <http://radar.weather.gov/Conus/RadarImg/pacnorthwest.gif>
GOES-N fn radpacnw.gif
GOES-R fn Z_QATA00KWBCddhmm_C_KWIN_yyyyMMddhhmmss_nnnnn-3-RADPACNW.GIF
 "Z" Originating center local product identifier
 T1 Q - Pictorial information regional (Binary coded)
 T2 A - Radar data
 A1 T - 45°W - 180° northern hemisphere
 A2 A - Analysis (00 hour)
 ii 00 - Entire atmosphere (eg precipitable water)
 Pri 3



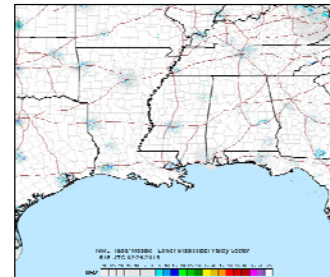
Title-07: US Radar Mosaic - Pacific Southwest Sector [NWS]
URL: <http://radar.weather.gov/Conus/RadarImg/pacsouthwest.gif>
GOES-N fn radpacsw.gif
GOES-R fn Z_QATA00KWBCddhmm_C_KWIN_yyyyMMddhhmmss_nnnnn-3-RADPACSW.GIF
 "Z" Originating center local product identifier
 T1 Q - Pictorial information regional (Binary coded)
 T2 A - Radar data
 A1 T - 45°W - 180° northern hemisphere
 A2 A - Analysis (00 hour)
 ii 00 - Entire atmosphere (eg precipitable water)
 Pri 3



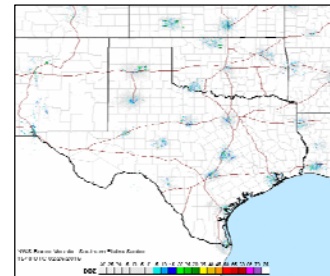
Title-08: US Radar Mosaic - Southeast Sector [NWS]
URL: <http://radar.weather.gov/Conus/RadarImg/southeast.gif>
GOES-N fn radsthes.gif
GOES-R fn Z_QATA00KWBCddhmm_C_KWIN_yyyyMMddhhmmss_nnnnn-3-RADSTHES.GIF
 "Z" Originating center local product identifier
 T1 Q - Pictorial information regional (Binary coded)
 T2 A - Radar data
 A1 T - 45°W - 180° northern hemisphere
 A2 A - Analysis (00 hour)
 ii 00 - Entire atmosphere (eg precipitable water)
 Pri 3



Title-09: US Radar Mosaic - Lower Mississippi Valley Sector [NWS]
URL: <http://radar.weather.gov/Conus/RadarImg/southmissvly.gif>
GOES-N fn radmsvly.gif
GOES-R fn Z_QATA00KWBCddhmm_C_KWIN_yyyyMMddhhmmss_nnnnn-3-RADSMSVY.GIF
 "Z" Originating center local product identifier
 T1 Q - Pictorial information regional (Binary coded)
 T2 A - Radar data
 A1 T - 45°W - 180° northern hemisphere
 A2 A - Analysis (00 hour)
 ii 00 - Entire atmosphere (eg precipitable water)
 Pri 3



Title-10: US Radar Mosaic - Southern Plains Sector [NWS]
URL: <http://radar.weather.gov/Conus/RadarImg/southplains.gif>
GOES-N fn radsthpl.gif
GOES-R fn Z_QATA00KWBCddhmm_C_KWIN_yyyyMMddhhmmss_nnnnn-3-RADSTHPL.GIF
 "Z" Originating center local product identifier
 T1 Q - Pictorial information regional (Binary coded)
 T2 A - Radar data
 A1 T - 45°W - 180° northern hemisphere
 A2 A - Analysis (00 hour)
 ii 00 - Entire atmosphere (eg precipitable water)
 Pri 3

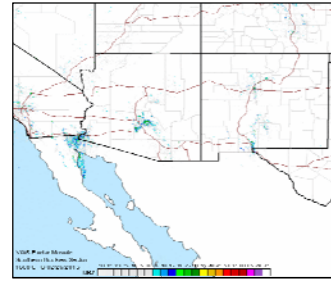


Title-11: US Radar Mosaic - Southern Rockies Sector [NWS]
URL: <http://radar.weather.gov/Conus/RadarImg/southrockies.gif>

GOES-N fn radrckst.gif

GOES-R fn Z_QATA00KWBCddhmm_C_KWIN_yyyyMMddhhmmss_nnnnn-3-RADRCKST.GIF

"Z" Originating center local product identifier
T1 Q - Pictorial information regional (Binary coded)
T2 A - Radar data
A1 T - 45°W - 180° northern hemisphere
A2 A - Analysis (00 hour)
ii 00 - Entire atmosphere (eg precipitable water)
Pri 3



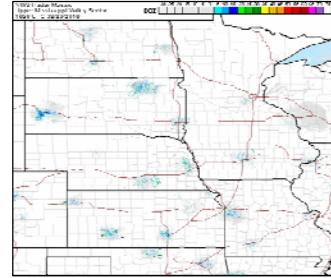
Title-12: US Radar Mosaic - Upper Mississippi Valley Sector [NWS]

URL: <http://radar.weather.gov/Conus/RadarImg/uppermissvly.gif>

GOES-N fn radumsvy.gif

GOES-R fn Z_QATA00KWBCddhmm_C_KWIN_yyyyMMddhhmmss_nnnnn-3-RADUMSVY.GIF

"Z" Originating center local product identifier
T1 Q - Pictorial information regional (Binary coded)
T2 A - Radar data
A1 T - 45°W - 180° northern hemisphere
A2 A - Analysis (00 hour)
ii 00 - Entire atmosphere (eg precipitable water)
Pri 3



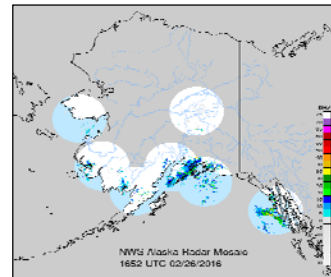
Title-13: US Radar Mosaic - Alaska [NWS]

URL: <http://radar.weather.gov/ridge/Conus/RadarImg/alaska.gif>

GOES-N fn radallak.gif

GOES-R fn Z_QABA00KWBCddhmm_C_KWIN_yyyyMMddhhmmss_nnnnn-3-RADALLAK.GIF

"Z" Originating center local product identifier
T1 Q - Pictorial information regional (Binary coded)
T2 A - Radar data
A1 B - 90°W - 180° northern hemisphere
A2 A - Analysis (00 hour)
ii 00 - Entire atmosphere (eg precipitable water)
Pri 3



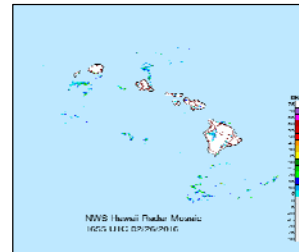
Title-14: Hawaii Radar Mosaic [NWS]

URL: <http://radar.weather.gov/ridge/Conus/RadarImg/hawaii.gif>

GOES-N fn radallhi.gif

GOES-R fn Z_QAFA00KWBCddhmm_C_KWIN_yyyyMMddhhmmss_nnnnn-3-RADALLHI.GIF

"Z" Originating center local product identifier
T1 Q - Pictorial information regional (Binary coded)
T2 A - Radar data
A1 F - 90°W - 180° tropical belt
A2 A - Analysis (00 hour)
ii 00 - Entire atmosphere (eg precipitable water)
Pri 3



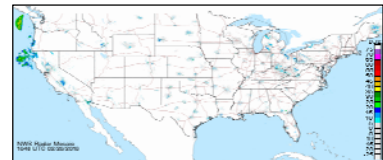
Title-15: US Radar Mosaic [NWS]

URL: http://radar.weather.gov/ridge/Conus/RadarImg/latest_Small.gif

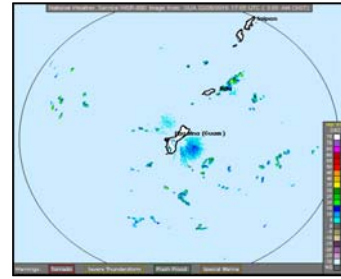
GOES-N fn radrefus.gif

GOES-R fn Z_QATA00KWBCddhmm_C_KWIN_yyyyMMddhhmmss_nnnnn-3-RADREFUS.GIF

"Z" Originating center local product identifier
T1 Q - Pictorial information regional (Binary coded)
T2 A - Radar data
A1 T - 45°W - 180° northern hemisphere
A2 A - Analysis (00 hour)
ii 00 - Entire atmosphere (eg precipitable water)
Pri 3



Title-16: National Weather Service WSR-88D Image from: GUA
URL: http://radar.weather.gov/ridge/lite/NOR/GUA_0.png
GOES-N fn radallgu.png
GOES-R fn Z_QAGA00PGUMddhhmm_C_KWIN_yyyyMMddhhmss_nnnnnn-3-RADALLGU.GIF
"Z" Originating center local product identifier
T1 Q - Pictorial information regional (Binary coded)
T2 A - Radar data
A1 G - 180° - 90°E tropical belt
A2 A - Analysis (00 hour)
ii 00 - Entire atmosphere (eg precipitable water)
Pri 3



Title-17: National Weather Service WSR-88D Image from: JUA
URL: http://radar.weather.gov/ridge/lite/NOR/JUA_0.png
GOES-N fn radallpr.png
GOES-R fn Z_QAEA00TJSJddhhmm_C_KWIN_yyyyMMddhhmss_nnnnnn-3-RADALLPR.PNG
"Z" Originating center local product identifier
T1 Q - Pictorial information regional (Binary coded)
T2 A - Radar data
A1 E - 0° - 90°W tropical belt
A2 A - Analysis (00 hour)
ii 00 - Entire atmosphere (eg precipitable water)
Pri 3



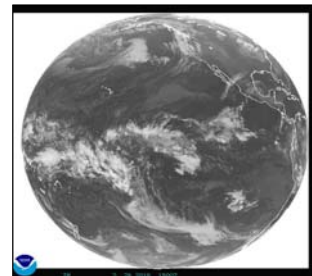
Title-18: NWS Day 3-7 U.S. Hazards Outlook
URL: http://www.cpc.ncep.noaa.gov/products/predictions/threats/hazards_d3_7_contours.png
GOES-N fn ushzthrt.png
GOES-R fn Z_QGTK98KWBCddhhmm_C_KWIN_yyyyMMddhhmss_nnnnnn-4-USHZTHRT.PNG
"Z" Originating center local product identifier
T1 Q - Pictorial information regional (Binary coded)
T2 G - Significant weather
A1 T - 45°W - 180° northern hemisphere
A2 K - 72 hours forecast
ii 98 - Air properties for the Earth's surface
Pri 4



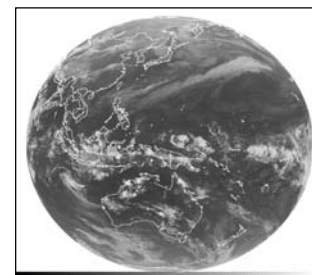
Title-19: East Africa / West Indian Ocean IR [METEOSAT]
URL: <http://www.goes.noaa.gov/FULLDISK/GIIR.JPG>
GOES-N fn indcirus.jpg
GOES-R fn Z_EIIO00KWBCddhhmm_C_KWIN_yyyyMMddhhmss_nnnnnn-4-INDCIRUS.PNG
"Z" Originating center local product identifier
T1 E - Satellite imagery
T2 I - Infrared
A1A2 IO - Indian Ocean area
ii 00 - (arbitrary)
Pri 4



Title-20: Eastern Pacific Ocean area IR [NOAA]
URL: <http://www.goes.noaa.gov/FULLDISK/GWIR.JPG>
GOES-N fn g10fdius.jpg
GOES-R fn Z_EIPZ00KWBCddhhmm_C_KWIN_yyyyMMddhhmss_nnnnnn-4-G10FDIUS.PNG
"Z" Originating center local product identifier
T1 E - Satellite imagery
T2 I - Infrared
A1A2 PZ - Eastern Pacific Area
ii 00 - (arbitrary)
Pri 4



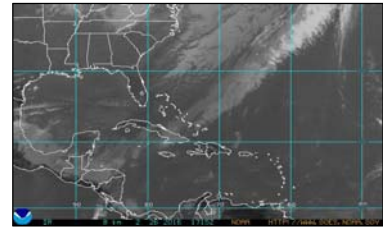
Title-21: Western North Pacific Area IR [MTSAT]
URL: <http://www.goes.noaa.gov/dimg/jma/fd/ir4/10.gif>
GOES-N fn gms008ja.jpg
GOES-R fn Z_EIPQ00KWBCddhhmm_C_KWIN_yyyyMMddhhmss_nnnnnn-4-GMS008JA.GIF
"Z" Originating center local product identifier
T1 E - Satellite imagery
T2 I - Infrared
A1A2 PQ - Western North Pacific area
ii 00 - (arbitrary)
Pri 4



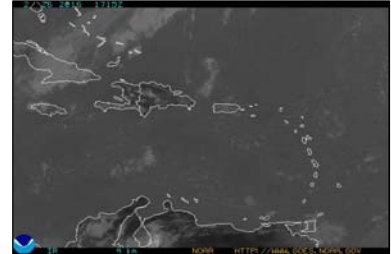
Title-22: United States (Central and Eastern) IR 8km [NOAA]
URL: <http://www.goes.noaa.gov/GIFS/ECIR.JPG>
GOES-N fn g08cirus.jpg
GOES-R fn Z_EINA00KWBCddhmm_C_KWIN_yyyyMMddhhmmss_nnnnnn-4-G08CIRUS.PNG
 "Z" Originating center local product identifier
 T1 E - Satellite imagery
 T2 I - Infrared
 A1A2 NA - North America
 ii 00 - (arbitrary)
 Pri 4



Title-23: RA-IV Atlantic Hurricane Basin IR 8km [NOAA]
URL: <http://www.goes.noaa.gov/GIFS/HUIR.JPG>
GOES-N fn g08hurus.jpg
GOES-R fn Z_EINT00KWBCddhmm_C_KWIN_yyyyMMddhhmmss_nnnnnn-4-G08HURUS.PNG
 "Z" Originating center local product identifier
 T1 E - Satellite imagery
 T2 I - Infrared
 A1A2 NT - North Atlantic area
 ii 00 - (arbitrary)
 Pri 4



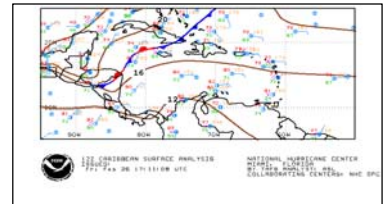
Title-24: Puerto Rico IR 4km [NOAA]
URL: <http://www.goes.noaa.gov/GIFS/PRIR.JPG>
GOES-N fn imgsjupr.jpg
GOES-R fn Z_EIPU00KWBCddhmm_C_KWIN_yyyyMMddhhmmss_nnnnnn-4-IMGSJUPR.PNG
 "Z" Originating center local product identifier
 T1 E - Satellite imagery
 T2 I - Infrared
 A1A2 PU - Puerto Rico
 ii 00 - (arbitrary)
 Pri 4



Title-25: US West Coast IR 4km [NOAA]
URL: <http://www.goes.noaa.gov/GIFS/WCIR.JPG>
GOES-N fn g10cirus.jpg
GOES-R fn Z_EIUS00KWBCddhmm_C_KWIN_yyyyMMddhhmmss_nnnnnn-4-G10CIRUS.PNG
 "Z" Originating center local product identifier
 T1 E - Satellite imagery
 T2 I - Infrared
 A1A2 US - United States of America
 ii 00 - (arbitrary)
 Pri 4



Title-26: Caribbean Surface Analysis [NHC/NOAA]
URL: http://www.nhc.noaa.gov/tafb_latest/CAR_latest.gif
GOES-N fn CSA001us.gif
GOES-R fn Z_QYEA98KNHCddhmm_C_KWIN_yyyyMMddhhmmss_nnnnnn-4-CSA001US.GIF
 "Z" Originating center local product identifier
 T1 Q - Pictorial information regional (Binary coded)
 T2 Y - Observational plotted chart
 A1 E - 0°-90°W tropical belt
 A2 A - Analysis (00 hour)
 ii 98 - Air properties for the Earth's surface
 Pri 4



Title-27: US Convective Outlook Day 1 [SPC/NOAA]
URL: <http://www.spc.noaa.gov/products/outlook/day1otlk.gif>
GOES-N fn moddy1us.gif
GOES-R fn Z_QETI00KWNSddhhmm_C_KWIN_yyyyMMddhhmmss_nnnnnn-4-MODDY1US.GIF
 "Z" Originating center local product identifier
 T1 Q - Pictorial information regional (Binary coded)
 T2 E - Precipitation
 A1 T - 45°W - 180° northern hemisphere
 A2 I - 24 hours forecast
 ii 00 - Entire atmosphere (eg precipitable water)
 Pri 4



Title-28: US Convective Outlook Day 2 [SPC/NOAA]
URL: <http://www.spc.noaa.gov/products/outlook/day2otlk.gif>
GOES-N fn moddy2us.gif
GOES-R fn Z_QETI00KWNSddhhmm_C_KWIN_yyyyMMddhhmmss_nnnnnn-4-MODDY2US.GIF
 "Z" Originating center local product identifier
 T1 Q - Pictorial information regional (Binary coded)
 T2 E - Precipitation
 A1 T - 45°W - 180° northern hemisphere
 A2 I - 24 hours forecast
 ii 00 - Entire atmosphere (eg precipitable water)
 Pri 4



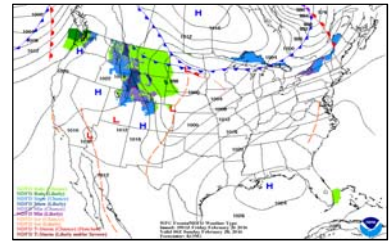
Title-29: US Watches, Warnings & Advisories
URL: <http://www.spc.noaa.gov/products/wwa/wwa.gif>
GOES-N fn imgwwaus.gif
GOES-R fn Z_QGTA98KWNSddhhmm_C_KWIN_yyyyMMddhhmmss_nnnnnn-4-IMGWWAUS.GIF
 "Z" Originating center local product identifier
 T1 Q - Pictorial information regional (Binary coded)
 T2 G - Significant weather
 A1 T - 45°W - 180° northern hemisphere
 A2 A - Analysis (00 hour)
 ii 98 - Air properties for the Earth's surface
 Pri 4



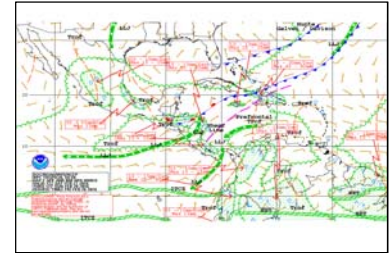
Title-30: North American Sounder CAPE [NOAA/GOES]
URL: <http://www.ssd.noaa.gov/PS/PCPN/DATA/RT/NA/GCAPE/20.jpg>
GOES-N fn imgsndus.jpg
GOES-R fn Z_EYUS00KWBCddhhmm_C_KWIN_yyyyMMddhhmmss_nnnnnn-4-IMGSDNUS.GIF
 "Z" Originating center local product identifier
 T1 E - Satellite imagery
 T2 Y - User specified: Convective Available Potential Energy (CAPE)
 A1A2 US - United States of America
 ii 00 - (arbitrary)
 Pri 4



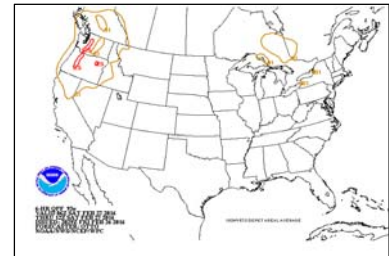
Title-31: WPC Fronts / NDFD Weather Type [NOAA]
URL: <http://www.wpc.ncep.noaa.gov/basicwx/96fndfd.gif>
GOES-N fn mod96fbw.gif
GOES-R fn Z_QGTI98KWNHddhmm_C_KWIN_yyyyMMddhhmmss_nnnnnn-4-MOD96FBW.GIF
 "Z" Originating center local product identifier
 T1 Q - Pictorial information regional (Binary coded)
 T2 G - Significant weather
 A1 T - 45°W - 180° northern hemisphere
 A2 I - 24 hours forecast
 ii 98 - Air properties for the Earth's surface
 Pri 4



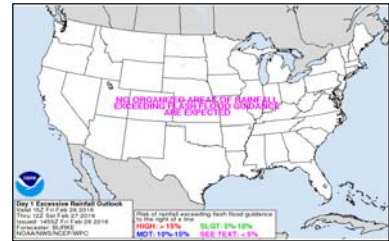
Title-32: US Significant River Flood Outlook [NOAA]
URL: <http://www.wpc.ncep.noaa.gov/nationalfloodoutlook/finalfop.gif>
GOES-N fn gphj88us.gif
GOES-R fn Z_PGTO88KWNHddhmm_C_KWIN_yyyyMMddhhmmss_nnnnnn-4-GPHJ88US.GIF
 "Z" Originating center local product identifier
 T1 P - Pictorial information (Binary coded)
 T2 G - Significant weather
 A1 T - 45°W - 180° northern hemisphere
 A2 O - 120 hours forecast (5 days)
 ii 88 - Ground or water properties for the Earth's surface
 Pri 4



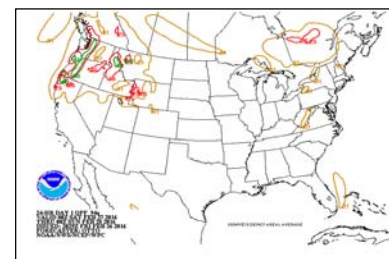
Title-33: US 6-Hour QPF 93e [WPC/NOAA]
URL: <http://www.wpc.ncep.noaa.gov/qpf/93ewbg.gif>
GOES-N fn mod93sus.gif
GOES-R fn Z_QETC00KWNHddhmm_C_KWIN_yyyyMMddhhmmss_nnnnnn-4-MOD93SUS.GIF
 "Z" Originating center local product identifier
 T1 Q - Pictorial information regional (Binary coded)
 T2 E - Precipitation
 A1 T - 45°W - 180° northern hemisphere
 A2 C - 6 hours forecast
 ii 00 - Entire atmosphere (eg precipitable water)
 Pri 4



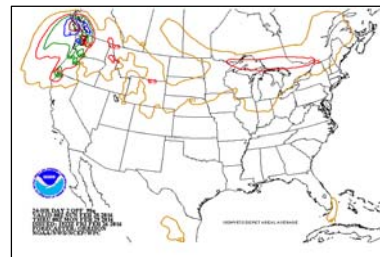
Title-34: US Day 1 Excessive Rainfall Outlook [WPC/NOAA]
URL: <http://www.wpc.ncep.noaa.gov/qpf/94ewbg.gif>
GOES-N fn mod94sus.gif
GOES-R fn Z_QETI88KWNHddhmm_C_KWIN_yyyyMMddhhmmss_nnnnnn-4-MOD94SUS.GIF
 "Z" Originating center local product identifier
 T1 Q - Pictorial information regional (Binary coded)
 T2 E - Precipitation
 A1 T - 45°W - 180° northern hemisphere
 A2 I - 24 hours forecast
 ii 88 - Ground or water properties for the Earth's surface
 Pri 4



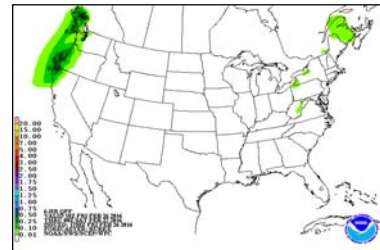
Title-35: US 24-HR Day 1 QPF 94q [WPC/NOAA]
URL: <http://www.wpc.ncep.noaa.gov/qpf/94qwbg.gif>
GOES-N fn modqp1us.gif
GOES-R fn Z_QETC00KWNHddhmm_C_KWIN_yyyyMMddhhmmss_nnnnnn-4-MODQP1US.GIF
 "Z" Originating center local product identifier
 T1 Q - Pictorial information regional (Binary coded)
 T2 E - Precipitation
 A1 T - 45°W - 180° northern hemisphere
 A2 I - 24 hours forecast
 ii 00 - Entire atmosphere (eg precipitable water)
 Pri 4



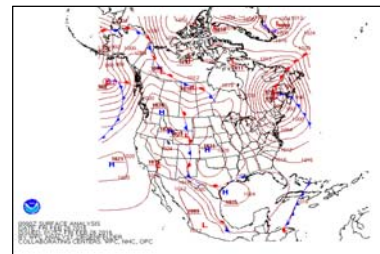
Title-36: US 24-HR Day 2 QPF 94q [WPC/NOAA]
URL: <http://www.wpc.ncep.noaa.gov/qpf/98qwbg.gif>
GOES-N fn modqp2us.gif
GOES-R fn Z_QETQ00KWNHddhmm_C_KWIN_yyyyMMddhmmss_nnnnn-4-MODQP2US.GIF
 "Z" Originating center local product identifier
 T1 Q - Pictorial information regional (Binary coded)
 T2 E - Precipitation
 A1 T - 45°W - 180° northern hemisphere
 A2 Q - 48 hours forecast
 ii 00 - Entire atmosphere (eg precipitable water)
 Pri 4



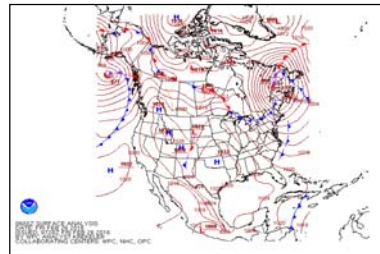
Title-37: US 6-HR QPF [WPC/NOAA]
URL: http://www.wpc.ncep.noaa.gov/qpf/fill_91ewbg.gif
GOES-N fn mod91eus.gif
GOES-R fn Z_QETC00KWNHddhmm_C_KWIN_yyyyMMddhmmss_nnnnn-4-MOD91EUS.GIF
 "Z" Originating center local product identifier
 T1 Q - Pictorial information regional (Binary coded)
 T2 E - Precipitation
 A1 T - 45°W - 180° northern hemisphere
 A2 C - 6 hours forecast
 ii 00 - Entire atmosphere (eg precipitable water)
 Pri 4



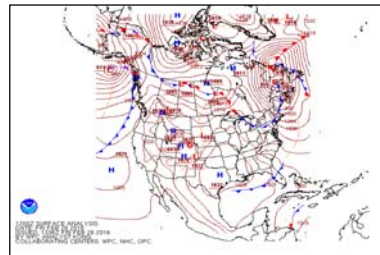
Title-38: North America 00Z Surface Analysis
URL: <http://www.wpc.ncep.noaa.gov/sfc/namfntsfc00wbg.gif>
GOES-N fn imgfnt00.gif
GOES-R fn Z_QPTA98KWNHddhmm_C_KWIN_yyyyMMddhmmss_nnnnn-4-IMGFNT00.GIF
 "Z" Originating center local product identifier
 T1 Q - Pictorial information regional (Binary coded)
 T2 P - Pressure
 A1 T - 45°W - 180° northern hemisphere
 A2 A - Analysis (00 hour)
 ii 98 - Air properties for the Earth's surface
 Pri 4



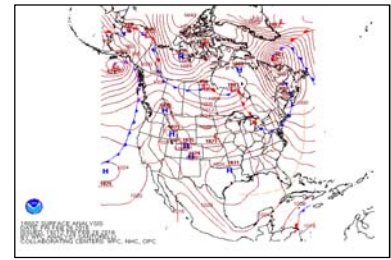
Title-39: North America 06Z Surface Analysis
URL: <http://www.wpc.ncep.noaa.gov/sfc/namfntsfc06wbg.gif>
GOES-N fn imgfnt06.gif
GOES-R fn Z_QPTC98KWNHddhmm_C_KWIN_yyyyMMddhmmss_nnnnn-4-IMGFNT06.GIF
 "Z" Originating center local product identifier
 T1 Q - Pictorial information regional (Binary coded)
 T2 P - Pressure
 A1 T - 45°W - 180° northern hemisphere
 A2 C - 6 hours forecast
 ii 98 - Air properties for the Earth's surface
 Pri 4



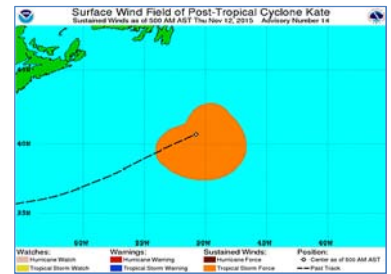
Title-40: North America 12Z Surface Analysis
URL: <http://www.wpc.ncep.noaa.gov/sfc/namfntsfc12wbg.gif>
GOES-N fn imgfnt12.gif
GOES-R fn Z_QPTE98KWNHddhmm_C_KWIN_yyyyMMddhmmss_nnnnn-4-IMGFNT12.GIF
 "Z" Originating center local product identifier
 T1 Q - Pictorial information regional (Binary coded)
 T2 P - Pressure
 A1 T - 45°W - 180° northern hemisphere
 A2 E - 12 hours forecast
 ii 98 - Air properties for the Earth's surface
 Pri 4



Title-41: North America 18Z Surface Analysis
URL: <http://www.wpc.ncep.noaa.gov/sfc/namfntsfc18wbg.gif>
GOES-N fn imgfnt18.gif
GOES-R fn Z_QPTG98KWNHddhmm_C_KWIN_yyyyMMddhhmmss_nnnnn-4-IMGFNT18.GIF
 "Z" Originating center local product identifier
 T1 Q - Pictorial information regional (Binary coded)
 T2 P - Pressure
 A1 T - 45°W - 180° northern hemisphere
 A2 G - 18 hours forecast
 ii 98 - Air properties for the Earth's surface
 Pri 4



Title-42: Atlantic Basin Tropical Storm [NHC]
URL: http://www.nhc.noaa.gov/storm_graphics/AT12/AL1215R_sm2.gif
GOES-N fn alNNYYrs.gif (where NN = Storm Seq No; YY = Calendar Year)
GOES-R fn Z_PWEA98KNHCddhmm_C_KWIN_yyyyMMddhhmmss_nnnnn-3-ALNNYYRS.GIF
 "Z" Originating center local product identifier
 T1 P - Pictorial information (Binary coded)
 T2 W - Wind
 A1 E - 0° - 90°W tropical belt
 A2 A - Analysis (00 hour)
 ii 98 - Air properties for the Earth's surface
 Pri 4
 Note * Multiple AT storms per calendar year; folders AT01-AT30 pre-staged at NHC



Title-43: Eastern Pacific Basin Tropical Storm [NHC]
URL: http://www.nhc.noaa.gov/storm_graphics/EP22/EP2215R_sm2.gif *
GOES-N fn epNNYYws.gif (where NN = Storm Seq No; YY = Calendar Year)
GOES-R fn Z_PWFA98KNHCddhmm_C_KWIN_yyyyMMddhhmmss_nnnnn-3-EPNNYYWS.GIF
 "Z" Originating center local product identifier
 T1 P - Pictorial information (Binary coded)
 T2 W - Wind
 A1 F - 90°W - 180° tropical belt
 A2 A - Analysis (00 hour)
 ii 98 - Air properties for the Earth's surface
 Pri 4
 Note * Multiple EP storms per calendar year; folders EP01-EP30 pre-staged at NHC.

