

U.S. NATIONAL WEATHER SERVICE

EMWIN Image and Text Data Capture Catalog

Version
1.3h

Document Control

Version Number	Version Description	Author(s)	Date Completed
V 0.1	Initial Document Draft	Gillespie	09/14/2016
V 1.0	Adds title page and Document Control page. Modifies the assigned product header and priority of the Atlantic and Eastern Pacific Basin Tropical Storm Products from NHC.	Gillespie	03/01/2017
V 1.1	Adds storm graphics “Atlantic Basin Tropical Storm [NHC] 3-Day Forecast Track and Current Winds” and “Eastern Pacific Basin Tropical Storm [NHC] 3-Day Forecast Track and Current Winds”	Banks	10/02/2017
V 1.2	Modified the URLs and filenames for Titles 22, 23, 24 and 29. Added text for the radar image scaling.	Banks	01/26/2018
V 1.2a	Corrected URLs for the National Hurricane Center and for the image G02CIRUS.JPG.	Banks	02/06/2018
V 1.2b	Corrected file name extensions for GOES-R products to match the correct file type.	Banks	02/22/2018
V 1.2c	Updated the URLs for titles 32, 29, 28 and 27. Changed the file extension for title 32 to PNG.	Banks	06/22/2018
V 1.3	Updated entire document to be a single word document. Corrected multiple URLs to use https instead of http.	Banks	7/13/2018
V 1.3a	Corrected the filename for GOES-N on title 22 from G02CIRUS.JPG to G16CIRCUS.JPG.	Banks	8/03/2018
V 1.3b	NHC Trop Storm Track: AL 3-Day cone replaced by 5-Day cone (Title 44); added EP 5-Day cone product (Title 45).	Gillespie	8/17/2018
V1.3c	Updated the URLs for titles 13, 14, 15, 16, and 17.	Banks	12/22/2020
V1.3d	Updated URLs for titles 3, 4, 5, 6, 7, 8, 9, 10, 11, 12, 13, 14, 15, 16, 17 and 18	Banks	03/09/2021
V1.3e	Updated URLs for titles 20, 25 and 30	Banks	07/02/2021
V1.3f	Added a note to Title 18.	Banks	03/08/2022

V1.3g	Updated the URLs for titles 1, 19 and 21	Banks	3/29/2022
V1.3h	Updated all occurrences of DST to DSB	Banks	4/28/2022

*** Remaining page intentionally blank ***

This document is controlled by the Dissemination Systems Branch (DSB), Office of Dissemination, US National Weather Service. Any comments or corrections to this release should be addressed to:

nws.emwin.support@noaa.gov

1. **Overview**. The Emergency Managers Weather Information Network (EMWIN) File Image and Text Data Capture Catalog lists the text and image files disseminated by EMWIN. This document defines the “EMWIN broadcast product baseline” by the list of products contained herein. These products are captured by EMWIN from remote web sites and intended for public dissemination to provide user a heightened sense of situational awareness with regard to weather and water conditions and forecasts. The products described in this document are accessible by the general public, providing they have the commercial systems and services necessary to receive and display the product(s). The products are not encrypted.

2. **Catalog Format**. The product listing includes the following elements/characteristics:

- a. Title
- b. Uniform Resource Locator (URL), or file source web address”¹
- c. GOES-N series satellite EMWIN broadcast filename
- d. GOES-R series satellite High Rate Information Transmission (HRIT)/EMWIN broadcast filename²
- e. Description of the World Meteorological Organization (WMO) abbreviated header fields
- f. EMWIN message priority
- g. Visual representation of a typical image contained in the file

Note 1: The public also has the option to directly access the products over the Internet by visiting the product URL. There is however, no assurance that the listed URLs will remain open for public access in the future. Public access to these URLs is controlled by the owning organizations.

Note 2: The “EMWIN GOES-R Filename Convention Document” is found here:
<http://www.nws.noaa.gov/emwin/index.htm#documents>

3. **Product Baseline Management**.

a. The EMWIN Program Office, Dissemination Systems Branch (DSB), Office of Dissemination, US National Weather Service, maintains this product listing and is the authority for make changes to the product set and individual product descriptions.

b. Questions, comments and recommendations regarding this publication and the product set may be forwarded to the following email for review and consideration:

nws.emwin.support@noaa.gov

4. Abbreviations

Abbreviation	Explanation
DSB	Dissemination Systems Branch
EMWIN	Emergency Managers Weather Information Network
GOES	Geostationary Operational Environmental Satellite
HRIT	High Rate Information Transmission
NOAA	National Oceanic and Atmospheric Administration
URL	Uniform Resource Locator
US	United States of America
WMO	World Meteorological Organization

*** Remaining page intentionally blank ***

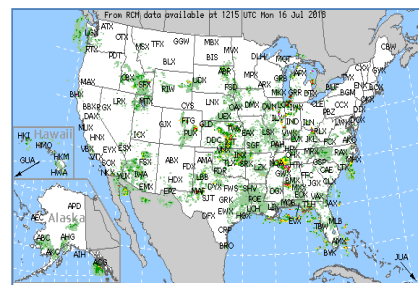
5. EMWIN Image and Text Data Capture Products

Note: All radar images are reduced to 3/4 of the original image size prior to broadcast.

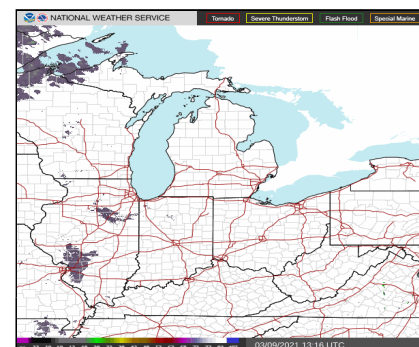
Title-01: Weather Satellite Ephemerides
URL: <https://celestrak.com/NORAD/elements/weather.txt>
GOES-N fn ephtwous.txt
GOES-R fn Z_NOXX10KWBCddhmm_C_KWIN_yyyyMMddhhmss_nnnnnn-4-EPHTWOUS.TXT
 "Z" Originating center local product identifier
 T1 N - Notices
 T2 O - METNO/WIFMA
 A1A2 XX - For use when other designators are not appropriate
 ii 10 - Unlisted
 Pri 3
 Rev 2018-08-17

METEOSAT-7
 1 24932U 97049B 16062.50875964 ...
 2 24932 10.0557 41.6922 0001990 ...
 NOAA 15
 1 25338U 98030A 16062.54962326 ...
 2 25338 98.7829 66.4887 0011450 ...
 METEOSAT-8 (MSG-1)
 1 27509U 02040B 16062.14401054 ...
 2 27509 4.0124 60.1514 0001744 ...
 KALPANA-1 (METSAT 1)

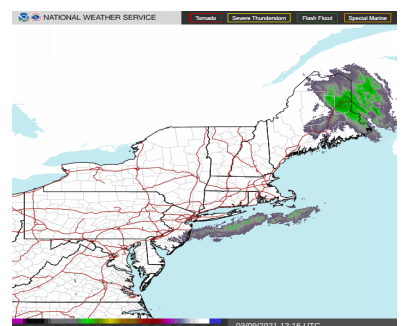
Title-02: US Radar Cloud Tops
URL: https://aviationweather.gov/data/obs/radar/radar_nav.gif
GOES-N fn radallus.gif
GOES-R fn Z_QATA00KKClddhmm_C_KWIN_yyyyMMddhhmss_nnnnnn-3-RADALLUS.GIF
 "Z" Originating center local product identifier
 T1 Q - Pictorial information regional (Binary coded)
 T2 A - Radar data
 A1 T - 45°W - 180° northern hemisphere
 A2 A - Analysis (00 hour)
 ii 00 - Entire atmosphere (e.g. precipitable water)
 Pri 3
 Rev 2018-07-10



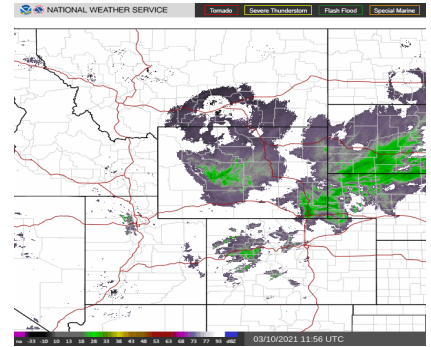
Title-03: US Radar Mosaic - Great Lakes Sector [NWS]
URL: https://radar.weather.gov/ridge/lite/CENTGRLAKES_0.gif
GOES-N fn radgrtlk.gif
GOES-R fn Z_QATA00KWBCddhmm_C_KWIN_yyyyMMddhhmss_nnnnnn-3-RADGRTLK.GIF
 "Z" Originating center local product identifier
 T1 Q - Pictorial information regional (Binary coded)
 T2 A - Radar data
 A1 T - 45°W - 180° northern hemisphere
 A2 A - Analysis (00 hour)
 ii 00 - Entire atmosphere (e.g. precipitable water)
 Pri 3
 Rev 2018-07-10



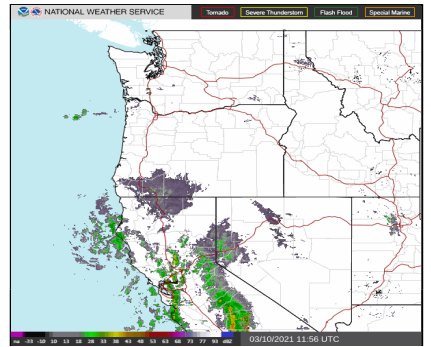
Title-04: US Radar Mosaic - Northeast Sector [NWS]
URL: https://radar.weather.gov/ridge/lite/NORTHEAST_0.gif
GOES-N fn radnthes.gif
GOES-R fn Z_QATA00KWBCddhmm_C_KWIN_yyyyMMddhhmss_nnnnnn-3-RADNTHES.GIF
 "Z" Originating center local product identifier
 T1 Q - Pictorial information regional (Binary coded)
 T2 A - Radar data
 A1 T - 45°W - 180° northern hemisphere
 A2 A - Analysis (00 hour)
 ii 00 - Entire atmosphere (e.g. precipitable water)
 Pri 3
 Rev 2018-07-10



Title-05: US Radar Mosaic - Northern Rockies Sector [NWS]
URL: https://radar.weather.gov/ridge/lite/NORTHROCKIES_0.gif
GOES-N fn radrcknt.gif
GOES-R fn Z_QATA00KWBCddhmm_C_KWIN_yyyyMMddhhmmss_nnnnnn-3-RADRCKNT.GIF
"Z" Originating center local product identifier
T1 Q - Pictorial information regional (Binary coded)
T2 A - Radar data
A1 T - 45°W - 180° northern hemisphere
A2 A - Analysis (00 hour)
ii 00 - Entire atmosphere (e.g. precipitable water)
Pri 3
Rev 2018-07-10



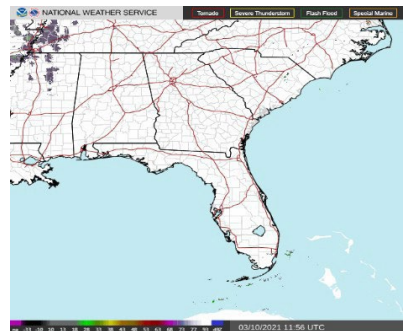
Title-06: US Radar Mosaic - Pacific Northwest Sector [NWS]
URL: https://radar.weather.gov/ridge/lite/PACNORTHWEST_0.gif
GOES-N fn radpacnw.gif
GOES-R fn Z_QATA00KWBCddhmm_C_KWIN_yyyyMMddhhmmss_nnnnnn-3-RADPACNW.GIF
"Z" Originating center local product identifier
T1 Q - Pictorial information regional (Binary coded)
T2 A - Radar data
A1 T - 45°W - 180° northern hemisphere
A2 A - Analysis (00 hour)
ii 00 - Entire atmosphere (e.g. precipitable water)
Pri 3
Rev 2018-07-10



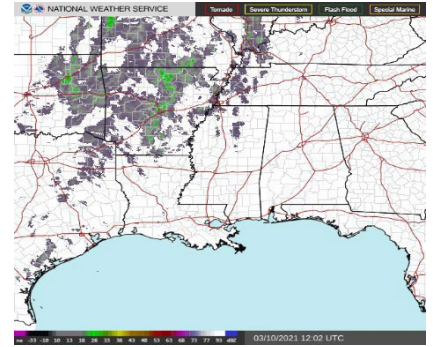
Title-07: US Radar Mosaic - Pacific Southwest Sector [NWS]
URL: https://radar.weather.gov/ridge/lite/PACSOUTHWEST_0.gif
GOES-N fn radpacsw.gif
GOES-R fn Z_QATA00KWBCddhmm_C_KWIN_yyyyMMddhhmmss_nnnnnn-3-RADPACSW.GIF
"Z" Originating center local product identifier
T1 Q - Pictorial information regional (Binary coded)
T2 A - Radar data
A1 T - 45°W - 180° northern hemisphere
A2 A - Analysis (00 hour)
ii 00 - Entire atmosphere (e.g. precipitable water)
Pri 3
Rev 2018-07-10



Title-08: US Radar Mosaic - Southeast Sector [NWS]
URL: https://radar.weather.gov/ridge/lite/SOUTHEAST_0.gif
GOES-N fn radsthes.gif
GOES-R fn Z_QATA00KWBCddhmm_C_KWIN_yyyyMMddhhmmss_nnnnnn-3-RADSTHES.GIF
"Z" Originating center local product identifier
T1 Q - Pictorial information regional (Binary coded)
T2 A - Radar data
A1 T - 45°W - 180° northern hemisphere
A2 A - Analysis (00 hour)
ii 00 - Entire atmosphere (e.g. precipitable water)
Pri 3
Rev 2018-07-10

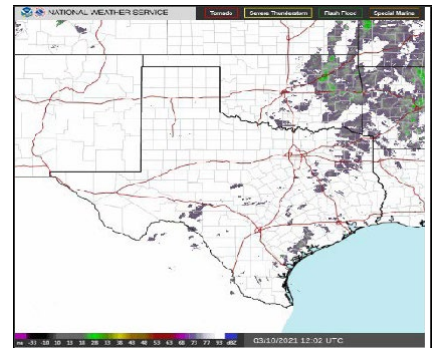


Title-09: Us Radar Mosaic - Lower Mississippi Valley Sector [NWS]
URL: https://radar.weather.gov/ridge/lite/SOUTHMISSVLY_0.gif
GOES-N fn radsmsvy.gif
GOES-R fn Z_QATA00KWBCddhmm_C_KWIN_yyyyMMddhhmmss_nnnnnn-3-RADSMSVY.GIF
 "Z" Originating center local product identifier
T1 Q - Pictorial information regional (Binary coded)
T2 A - Radar data
A1 T - 45°W - 180° northern hemisphere
A2 A - Analysis (00 hour)
 ii 00 - Entire atmosphere (e.g. precipitable water)
Pri 3
Rev 2018-07-10

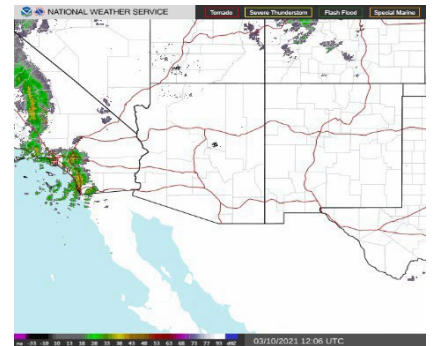


Title-10: US Radar Mosaic - Southern Plains Sector [NWS]
URL: https://radar.weather.gov/ridge/lite/SOUTHPLAINS_0.gif
GOES-N fn radsthpl.gif
GOES-R fn Z_QATA00KWBCddhmm_C_KWIN_yyyyMMddhhmmss_nnnnnn-3-RADSTHPL.GIF
 "Z" Originating center local product identifier
T1 Q - Pictorial information regional (Binary coded)
T2 A - Radar data
A1 T - 45°W - 180° northern hemisphere
A2 A - Analysis (00 hour)
 ii 00 - Entire atmosphere (e.g. precipitable water)
Pri 3

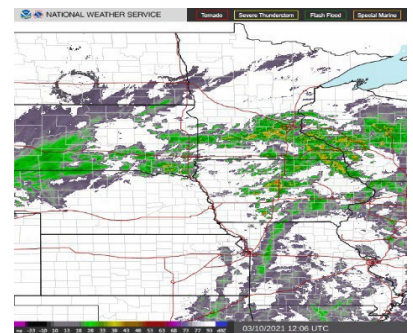
Rev 2018-07-10



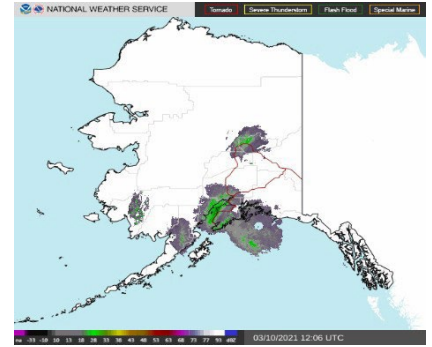
Title-11: US Radar Mosaic - Southern Rockies Sector [NWS]
URL: https://radar.weather.gov/ridge/lite/SOUTHROCKIES_0.gif
GOES-N fn radrckst.gif
GOES-R fn Z_QATA00KWBCddhmm_C_KWIN_yyyyMMddhhmmss_nnnnnn-3-RADRCKST.GIF
 "Z" Originating center local product identifier
T1 Q - Pictorial information regional (Binary coded)
T2 A - Radar data
A1 T - 45°W - 180° northern hemisphere
A2 A - Analysis (00 hour)
 ii 00 - Entire atmosphere (e.g. precipitable water)
Pri 3
Rev 2018-07-10



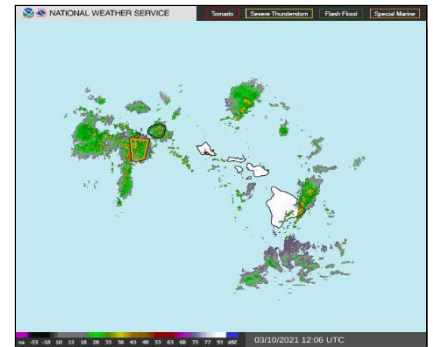
Title-12: US Radar Mosaic - Upper Mississippi Valley Sector [NWS]
URL: https://radar.weather.gov/ridge/lite/UPPERMISSVLY_0.gif
GOES-N fn radumsvy.gif
GOES-R fn Z_QATA00KWBCddhmm_C_KWIN_yyyyMMddhhmmss_nnnnnn-3-RADUMSVY.GIF
 "Z" Originating center local product identifier
T1 Q - Pictorial information regional (Binary coded)
T2 A - Radar data
A1 T - 45°W - 180° northern hemisphere
A2 A - Analysis (00 hour)
 ii 00 - Entire atmosphere (e.g. precipitable water)
Pri 3
Rev 2018-07-10



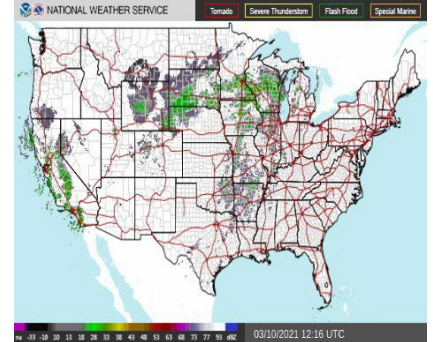
Title-13: US Radar Mosaic - Alaska [NWS]
URL: https://radar.weather.gov/ridge/lite/ALASKA_0.gif
GOES-N fn radallak.gif
GOES-R fn Z_QABA00KWBCddhmm_C_KWIN_yyyyMMddhhmmss_nnnnnn-3-RADALLAK.GIF
 "Z" Originating center local product identifier
 T1 Q - Pictorial information regional (Binary coded)
 T2 A - Radar data
 A1 B - 90°W - 180° northern hemisphere
 A2 A - Analysis (00 hour)
 ii 00 - Entire atmosphere (e.g. precipitable water)
 Pri 3
 Rev 2018-07-10



Title-14: Hawaii Radar Mosaic [NWS]
URL: https://radar.weather.gov/ridge/lite/HAWAII_0.gif
GOES-N fn radallhi.gif
GOES-R fn Z_QAFA00KWBCddhmm_C_KWIN_yyyyMMddhhmmss_nnnnnn-3-RADALLHI.GIF
 "Z" Originating center local product identifier
 T1 Q - Pictorial information regional (Binary coded)
 T2 A - Radar data
 A1 F - 90°W - 180° tropical belt
 A2 A - Analysis (00 hour)
 ii 00 - Entire atmosphere (e.g. precipitable water)
 Pri 3
 Rev 2018-07-10

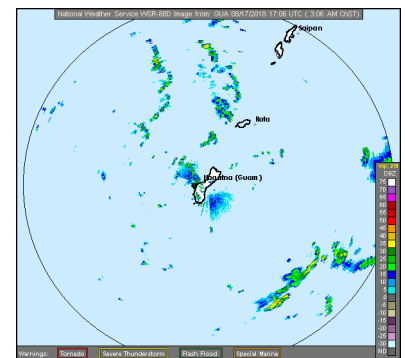


Title-15: US Radar Mosaic [NWS]
URL: https://radar.weather.gov/ridge/lite/CONUS_0.gif
GOES-N fn radrefus.gif
GOES-R fn Z_QATA00KWBCddhmm_C_KWIN_yyyyMMddhhmmss_nnnnnn-3-RADREFUS.GIF
 "Z" Originating center local product identifier
 T1 Q - Pictorial information regional (Binary coded)
 T2 A - Radar data
 A1 T - 45°W - 180° northern hemisphere
 A2 A - Analysis (00 hour)
 ii 00 - Entire atmosphere (e.g. precipitable water)
 Pri 3
 Rev 2018-07-10

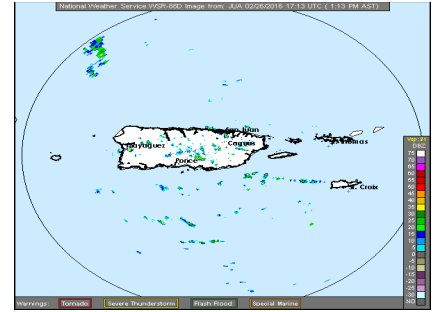


NOTE: Larger US image link is: https://radar.weather.gov/ridge/lite/CONUS-LARGE_0.gif

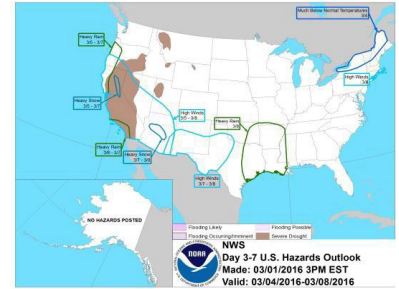
Title-16: National Weather Service WSR-88D Image from: GUA
URL: https://radar.weather.gov/ridge/lite/GUAM_0.gif
GOES-N fn radallgu.gif
GOES-R fn Z_QAGA00PGUMddhmm_C_KWIN_yyyyMMddhhmmss_nnnnnn-3-RADALLGU.GIF
 "Z" Originating center local product identifier
 T1 Q - Pictorial information regional (Binary coded)
 T2 A - Radar data
 A1 G - 180° - 90°E tropical belt
 A2 A - Analysis (00 hour)
 ii 00 - Entire atmosphere (e.g. precipitable water)
 Pri 3
 Rev 2018-08-17



Title-17: National Weather Service WSR-88D Image from: JUA
URL: https://radar.weather.gov/ridge/lite/TJUA_0.gif
GOES-N fn radallpr.gif
GOES-R fn Z_QAEA00TJSJddhmm_C_KWIN_yyyyMMddhhmmss_nnnnnn-3-RADALLPR.GIF
 "Z" Originating center local product identifier
 T1 Q - Pictorial information regional (Binary coded)
 T2 A - Radar data
 A1 E - 0° - 90°W tropical belt
 A2 A - Analysis (00 hour)
 ii 00 - Entire atmosphere (e.g. precipitable water)
 Pri 3
 Rev 2018-07-10

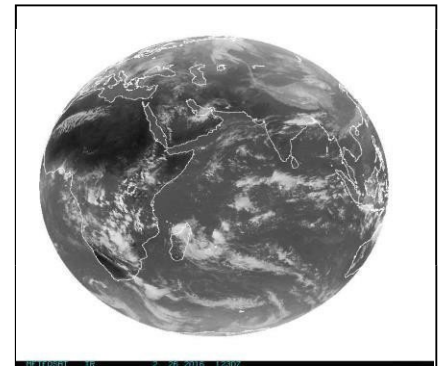


Title-18: NWS Day 3-7 U.S. Hazards Outlook
URL: https://www.wpc.ncep.noaa.gov/threats/final/hazards_d3_7_contours.png
GOES-N fn ushzthrt.png
GOES-R fn Z_QGTK98KWBCddhmm_C_KWIN_yyyyMMddhhmmss_nnnnnn-4-USHZTHRT.PNG
 "Z" Originating center local product identifier
 T1 Q - Pictorial information regional (Binary coded)
 T2 G - Significant Weather
 A1 T - 45°W - 180° northern hemisphere
 A2 K - 72 hours forecast
 ii 98 - Air properties for the Earth's surface
 Pri 4
 Rev 2018-0817

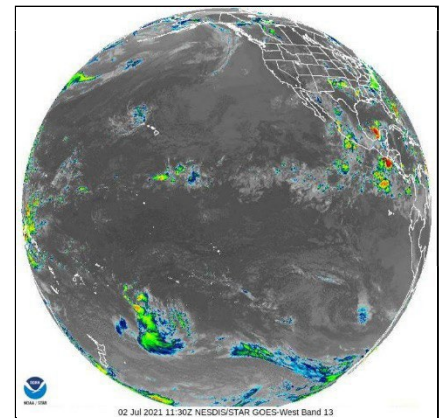


NOTE: These products are only created Monday through Friday.
 Please exercise caution using this outlook during the weekend.

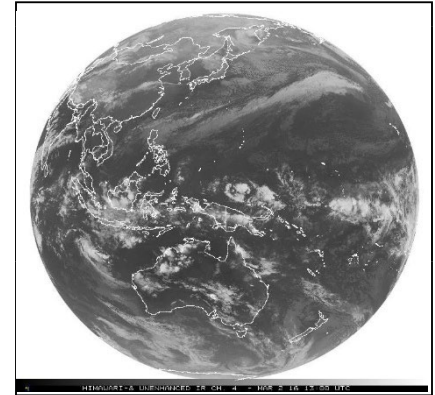
Title-19: East Africa / West Indian Ocean IR [METEOSAT]
URL: <https://www.goes.noaa.gov/FULLDISK/GIIR.JPG>
GOES-N fn indcirus.jpg
GOES-R fn Z_EII000KWBCddhmm_C_KWIN_yyyyMMddhhmmss_nnnnnn-4-INDCIRUS.JPG
 "Z" Originating center local product identifier
 T1 E - Satellite imagery
 T2 I - Infrared
 A1A2 IO - Indian Ocean area
 ii 00 - (arbitrary)
 Pri 4
 Rev 2018-07-10



Title-20: Eastern Pacific Ocean area IR [NOAA]
URL: <https://cdn.star.nesdis.noaa.gov/GOES17/ABI/FD/13/678x678.jpg>
GOES-N fn g10fdius.jpg
GOES-R fn Z_EIPZ00KWBCddhmm_C_KWIN_yyyyMMddhhmmss_nnnnnn-4-G10FDIUS.JPG
 "Z" Originating center local product identifier
 T1 E - Satellite imagery
 T2 I - Infrared
 A1A2 PZ - Eastern Pacific Area
 ii 00 - (arbitrary)
 Pri 4
 Rev 2018-07-10



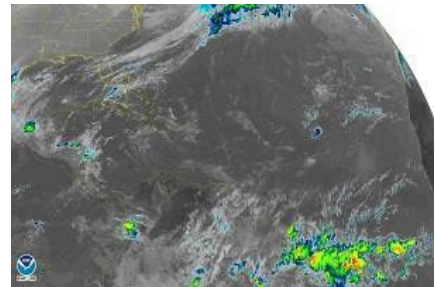
Title-21: Western North Pacific Area IR [MTSAT]
URL: <https://www.goes.noaa.gov/dimg/jma/fd/ir4/10.gif>
GOES-N fn gms008ja.gif
GOES-R fn Z_EIPQ00KWBCddhmm_C_KWIN_yyyyMMddhhmmss_nnnnnn-4-GMS008JA.GIF
"Z" Originating center local product identifier
T1 E - Satellite imagery
T2 I - Infrared
A1A2 PQ - Western North Pacific area
ii 00 - (arbitrary)
Pri 4
Rev 2018-08-17



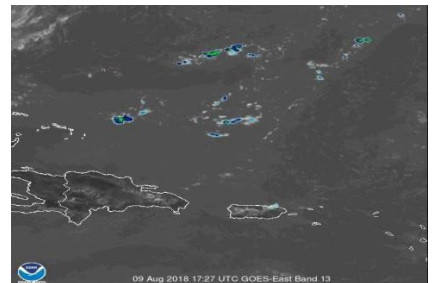
Title-22: United States IR 2km - CONUS East View [NOAA]
URL: <https://cdn.star.nesdis.noaa.gov/GOES16/ABI/CONUS/13/1250x750.jpg>
GOES-N fn g16cirrus.jpg
GOES-R fn Z_EINA00KWBCddhmm_C_KWIN_yyyyMMddhhmmss_nnnnnn-4-G16CIRUS.JPG
"Z" Originating center local product identifier
T1 E - Satellite imagery
T2 I - Infrared
A1A2 NA - North America
ii 00 - (arbitrary)
Pri 4
Rev 2018-07-10



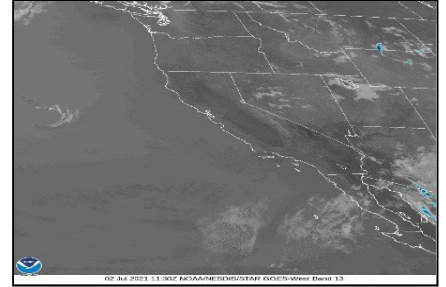
Title-23: RA-IV Atlantic Hurricane Basin IR 2km [NOAA]
URL: <https://cdn.star.nesdis.noaa.gov/GOES16/ABI/SECTOR/taw/13/900x540.jpg>
GOES-N fn g02hurus.jpg
GOES-R fn Z_EINT00KWBCddhmm_C_KWIN_yyyyMMddhhmmss_nnnnnn-4-G02HURUS.JPG
"Z" Originating center local product identifier
T1 E - Satellite imagery
T2 I - Infrared
A1A2 NT - North Atlantic area
ii 00 - (arbitrary)
Pri 4
Rev 2018-07-10



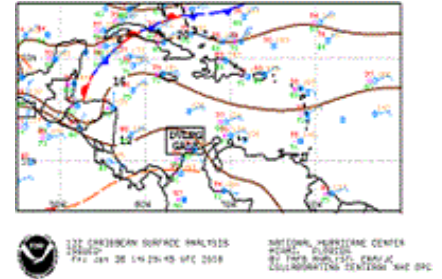
Title-24: Puerto Rico IR 2km [NOAA]
URL: <https://cdn.star.nesdis.noaa.gov/GOES16/ABI/SECTOR/pr/13/600x600.jpg>
GOES-N fn imgsjuvr.jpg
GOES-R fn Z_EIPU00KWBCddhmm_C_KWIN_yyyyMMddhhmmss_nnnnnn-4-IMGJSUPR.JPG
"Z" Originating center local product identifier
T1 E - Satellite imagery
T2 I - Infrared
A1A2 PU - Puerto Rico
ii 00 - (arbitrary)
Pri 4
Rev 2018-07-10



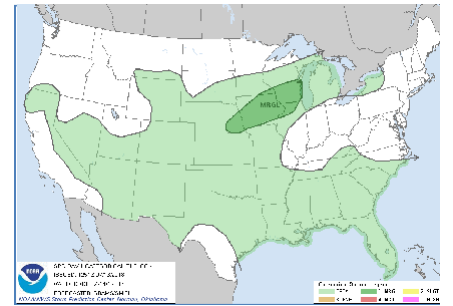
Title-25: US West Coast IR 4km [NOAA]
URL: <https://cdn.star.nesdis.noaa.gov/GOES17/ABI/SECTOR/wus/13/1000x1000.jpg>
GOES-N fn g10cirrus.jpg
GOES-R fn Z_EIUS00KWBcdhmm_C_KWIN_yyyyMMddhhmmss_nnnnnn-4-G10CIRUS.JPG
"Z" Originating center local product identifier
T1 E - Satellite imagery
T2 I - Infrared
A1A2 US - United States of America
ii 00 - (arbitrary)
Pri 4
Rev 2018-07-10



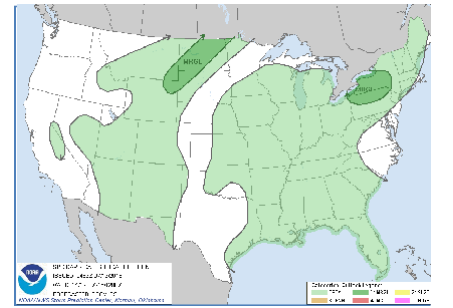
Title-26: Caribbean Surface Analysis [NHC/NOAA]
URL: https://www.nhc.noaa.gov/tafb_latest/CAR_latest.gif
GOES-N fn CSA001us.gif
GOES-R fn Z_QYEA98KNHCddhmm_C_KWIN_yyyyMMddhhmmss_nnnnnn-4-CSA001US.GIF
"Z" Originating center local product identifier
T1 Q - Pictorial information regional (Binary coded)
T2 Y - Observational plotted chart
A1 E - 0°-90°W tropical belt
A2 A - Analysis (00 hour)
ii 98 - Air properties for the Earth's surface
Pri 4
Rev 2018-07-10



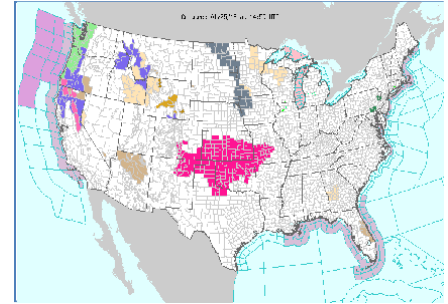
Title-27: US Convective Outlook Day 1 [SPC/NOAA]
URL: <https://www.spc.noaa.gov/products/outlook/day1otlk.gif>
GOES-N fn moddy1us.gif
GOES-R fn Z_QETI00KWNSddhmm_C_KWIN_yyyyMMddhhmmss_nnnnnn-4-MODDY1US.GIF
"Z" Originating center local product identifier
T1 Q - Pictorial information regional (Binary coded)
T2 E - Precipitation
A1 T - 45°W - 180° northern hemisphere
A2 I - 24 hours forecast
ii 00 - Entire atmosphere (e.g. precipitable water)
Pri 4
Rev 2018-07-10



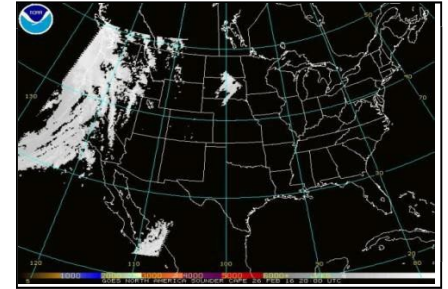
Title-28: US Convective Outlook Day 2 [SPC/NOAA]
URL: <https://www.spc.noaa.gov/products/outlook/day2otlk.gif>
GOES-N fn moddy2us.gif
GOES-R fn Z_QETQ00KWNSddhmm_C_KWIN_yyyyMMddhhmmss_nnnnnn-4-MODDY2US.GIF
"Z" Originating center local product identifier
T1 Q - Pictorial information regional (Binary coded)
T2 E - Precipitation
A1 T - 45°W - 180° northern hemisphere
A2 Q - 48 hours forecast
ii 00 - Entire atmosphere (e.g. precipitable water)
Pri 4
Rev 2018-08-17



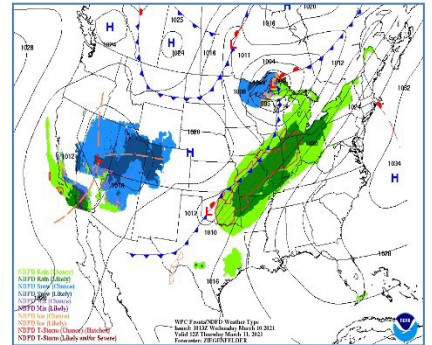
Title-29: US Watches, Warnings & Advisories
URL: <https://forecast.weather.gov/wwamap/png/US.png>
GOES-N fn imgwwaus.png
GOES-R fn Z_QGTA98KWNsddhmm_C_KWIN_yyyyMMddhhmmss_nnnnnn-4-IMGWVAUS.PNG
 "Z" Originating center local product identifier
 T1 Q - Pictorial information regional (Binary coded)
 T2 G - Significant weather
 A1 T - 45°W - 180° northern hemisphere
 A2 A - Analysis
 ii 98 - Air properties for the Earth's surface
 Pri 4
 Rev 2018-08-17



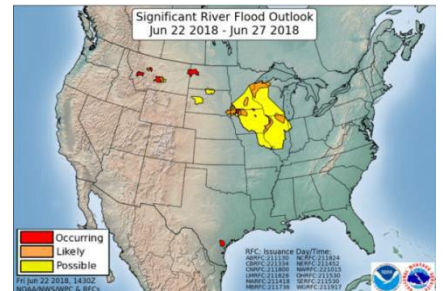
Title-30: North American Sounder CAPE [NOAA/GOES] - **DEACTIVATED**
URL: <http://www.ssd.noaa.gov/PS/PCPN/DATA/RT/NA/GCAPE/20.jpg>
GOES-N fn imgsndus.jpg
GOES-R fn Z_EYUS00KWBCddhmm_C_KWIN_yyyyMMddhhmmss_nnnnnn-4-IMGSNDUS.JPG
 "Z" Originating center local product identifier
 T1 E - Satellite imagery
 T2 Y - User specified: Convective Available Potential Energy (CAPE)
 A1A2 US - United States of America
 ii 00 - (arbitrary)
 Pri 4
 Rev 2018-07-10



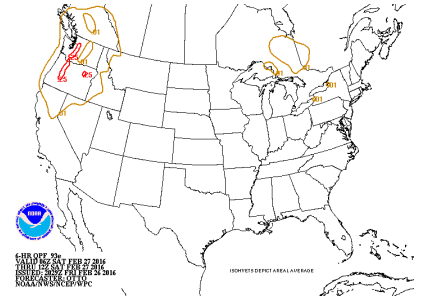
Title-31: WPC Fronts / NDFD Weather Type [NOAA]
URL: <https://www.wpc.ncep.noaa.gov/basicwx/96fndfd.gif>
GOES-N fn mod96fbw.gif
GOES-R fn Z_QGTI98KWNHddhmm_C_KWIN_yyyyMMddhhmmss_nnnnnn-4-MOD96FBW.GIF
 "Z" Originating center local product identifier
 T1 Q - Pictorial information regional (Binary coded)
 T2 G - Significant weather
 A1 T - 45°W - 180° northern hemisphere
 A2 I - 24 hours forecast
 ii 98 - Air properties for the Earth's surface
 Pri 4
 Rev 2018-07-10



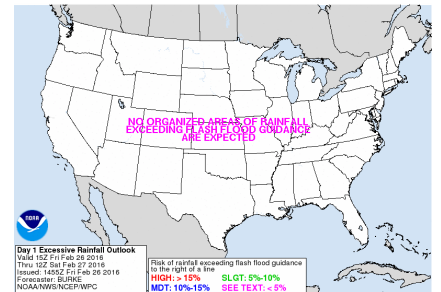
Title-32: US Significant River Flood Outlook [NOAA]
URL: https://www.wpc.ncep.noaa.gov/nationalfloodoutlook/finafop_nobounds.png
GOES-N fn gphj88us.png
GOES-R fn Z_QGTO88KWNsddhmm_C_KWIN_yyyyMMddhhmmss_nnnnnn-4-GPHJ88US.png
 "Z" Originating center local product identifier
 T1 Q - Pictorial information regional (Binary coded)
 T2 G - Significant weather
 A1 T - 45°W - 180° northern hemisphere
 A2 O - 120 hours forecast (5 days)
 ii 88 - Ground or water properties for the Earth's surface
 Pri 4
 Rev 2018-08-17



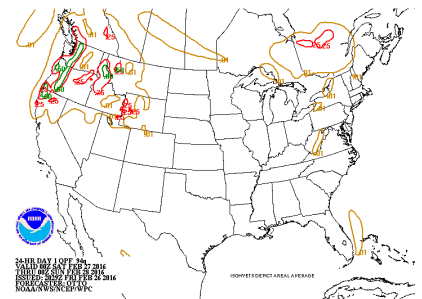
Title-33: US 6-Hour QPF 93e [WPC/NOAA]
URL: <https://www.wpc.ncep.noaa.gov/qpf/93ewbg.gif>
GOES-N fn mod93sus.gif
GOES-R fn Z_QETC00KWNHddhmm_C_KWIN_yyyyMMddhhmmss_nnnnnn-4-MOD93SUS.GIF
 "Z" Originating center local product identifier
 T1 Q - Pictorial information regional (Binary coded)
 T2 E - Precipitation
 A1 T - 45°W - 180° northern hemisphere
 A2 C - 6 hours forecast
 ii 00 - Entire atmosphere (e.g. precipitable water)
 Pri 4
 Rev 2018-07-10



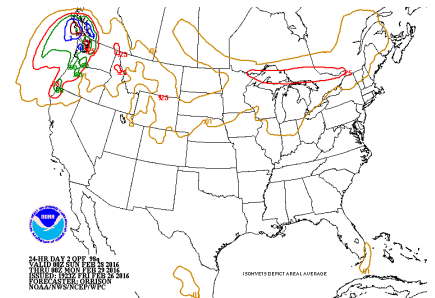
Title-34: US Day 1 Excessive Rainfall Outlook [WPC/NOAA]
URL: <https://www.wpc.ncep.noaa.gov/qpf/94ewbg.gif>
GOES-N fn mod94sus.gif
GOES-R fn Z_QETI88KWNHddhmm_C_KWIN_yyyyMMddhhmmss_nnnnnn-4-MOD94SUS.GIF
 "Z" Originating center local product identifier
 T1 Q - Pictorial information regional (Binary coded)
 T2 E - Precipitation
 A1 T - 45°W - 180° northern hemisphere
 A2 I - 24 hours forecast
 ii 88 - Ground or water properties for the Earth's surface
 Pri 4
 Rev 2018-07-10



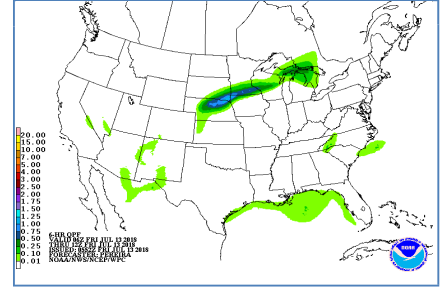
Title-35: US 24-HR Day 1 QPF 94q [WPC/NOAA]
URL: <https://www.wpc.ncep.noaa.gov/qpf/94qwbg.gif>
GOES-N fn modqp1us.gif
GOES-R fn Z_QETI00KWNHddhmm_C_KWIN_yyyyMMddhhmmss_nnnnnn-4-MODQP1US.GIF
 "Z" Originating center local product identifier
 T1 Q - Pictorial information regional (Binary coded)
 T2 E - Precipitation
 A1 T - 45°W - 180° northern hemisphere
 A2 I - 24 hours forecast
 ii 00 - Entire atmosphere (eg precipitable water)
 Pri 4
 Rev 2018-08-17



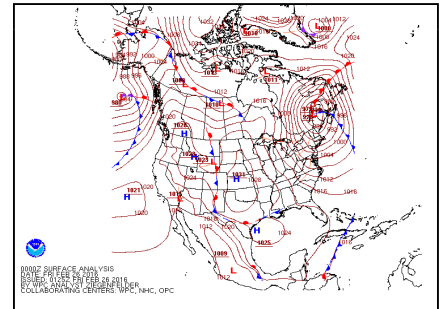
Title-36: US 24-HR Day 2 QPF 94q [WPC/NOAA]
URL: <https://www.wpc.ncep.noaa.gov/qpf/98qwbg.gif>
GOES-N fn modqp2us.gif
GOES-R fn Z_QETQ00KWNHddhmm_C_KWIN_yyyyMMddhhmmss_nnnnnn-4-MODQP2US.GIF
 "Z" Originating center local product identifier
 T1 Q - Pictorial information regional (Binary coded)
 T2 E - Precipitation
 A1 T - 45°W - 180° northern hemisphere
 A2 Q - 48 hours forecast
 ii 00 - Entire atmosphere (eg precipitable water)
 Pri 4
 Rev 2018-07-10



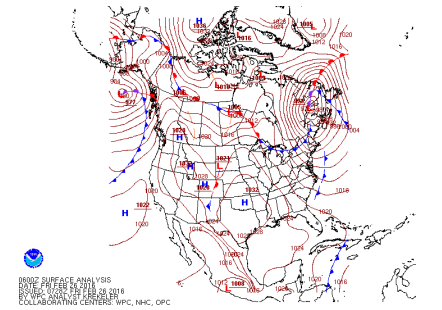
Title-37: US 6-HR QPF [WPC/NOAA]
URL: https://www.wpc.ncep.noaa.gov/qpf/fill_91ewbg.gif
GOES-N fn mod91eus.gif
GOES-R fn Z_QETC00KWNHddhmm_C_KWIN_yyyyMMddhmmss_nnnnnn-4-MOD91EUS.GIF
 "Z" Originating center local product identifier
 T1 Q - Pictorial information regional (Binary coded)
 T2 E - Precipitation
 A1 T - 45°W - 180° northern hemisphere
 A2 C - 6 hours forecast
 ii 00 - Entire atmosphere (e.g. precipitable water)
 Pri 4
 Rev 2018-07-10



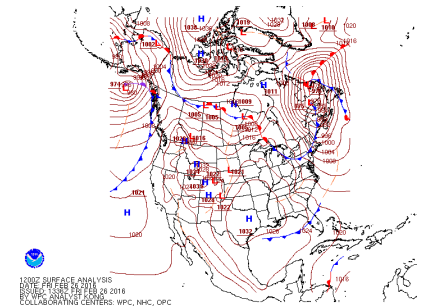
Title-38: North America 00Z Surface Analysis
URL: <https://www.wpc.ncep.noaa.gov/sfc/namfntsf00wbg.gif>
GOES-N fn imgfnt00.gif
GOES-R fn Z_QPTA98KWNHddhmm_C_KWIN_yyyyMMddhmmss_nnnnnn-4-IMGFNT00.GIF
 "Z" Originating center local product identifier
 T1 Q - Pictorial information regional (Binary coded)
 T2 P - Pressure
 A1 T - 45°W - 180° northern hemisphere
 A2 A - Analysis (00 hour)
 ii 98 - Air properties for the Earth's surface
 Pri 4
 Rev 2018-07-10



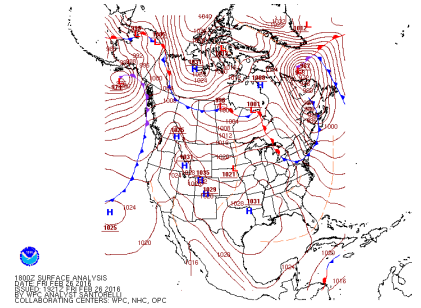
Title-39: North America 06Z Surface Analysis
URL: <https://www.wpc.ncep.noaa.gov/sfc/namfntsf06wbg.gif>
GOES-N fn imgfnt06.gif
GOES-R fn Z_QPTC98KWNHddhmm_C_KWIN_yyyyMMddhmmss_nnnnnn-4-IMGFNT06.GIF
 "Z" Originating center local product identifier
 T1 Q - Pictorial information regional (Binary coded)
 T2 P - Pressure
 A1 T - 45°W - 180° northern hemisphere
 A2 C - 6 hours forecast
 ii 98 - Air properties for the Earth's surface
 Pri 4
 Rev 2018-07-10



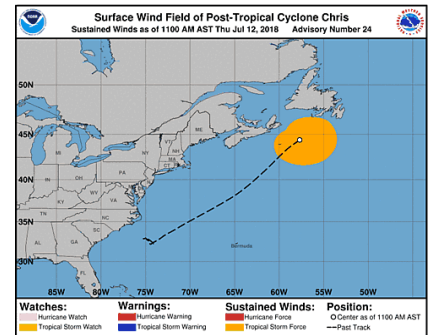
Title-40: North America 12Z Surface Analysis
URL: <https://www.wpc.ncep.noaa.gov/sfc/namfntsf12wbg.gif>
GOES-N fn imgfnt12.gif
GOES-R fn Z_QPTE98KWNHddhmm_C_KWIN_yyyyMMddhmmss_nnnnnn-4-IMGFNT12.GIF
 "Z" Originating center local product identifier
 T1 Q - Pictorial information regional (Binary coded)
 T2 P - Pressure
 A1 T - 45°W - 180° northern hemisphere
 A2 E - 12 hours forecast
 ii 98 - Air properties for the Earth's surface
 Pri 4
 Rev 2018-07-10



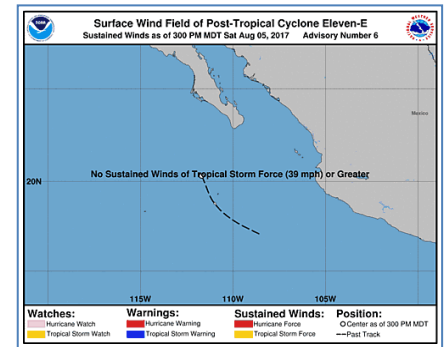
Title-41: North America 18Z Surface Analysis
URL: <https://www.wpc.ncep.noaa.gov/sfc/namfntsf18wbg.gif>
GOES-N fn imgfnt18.gif
GOES-R fn Z_QPTG98KWNHddhmm_C_KWIN_yyyyMMddhhmmss_nnnnnn-4-IMGFNT18.GIF
 "Z" Originating center local product identifier
 T1 Q - Pictorial information regional (Binary coded)
 T2 P - Pressure
 A1 T - 45°W - 180° northern hemisphere
 A2 G - 18 hours forecast
 ii 98 - Air properties for the Earth's surface
 Pri 4
 Rev 2018-07-10



Title-42: Atlantic Basin Tropical Storm [NHC]
URL: https://www.nhc.noaa.gov/storm_graphics/AT03/AL032018_current_wind_sm2.png
GOES-N fn alNNYYrs.png (where NN = Storm Seq No; YY = Calendar Year)
GOES-R fn Z_PWEA98KNHCddhmm_C_KWIN_yyyyMMddhhmmss_nnnnnn-3-ALNNYYRS.PNG
 "Z" Originating center local product identifier
 T1 P - Pictorial information (Binary coded)
 T2 W - Wind
 A1 E - 0° - 90°W tropical belt
 A2 A - Analysis (00 hour)
 ii 98 - Air properties for the Earth's surface
 Pri 4
 Rev 2018-07-10
Note* Multiple AT storms per calendar year; folders AT01-AT30 pre-staged at NHC.
Note* Files larger than 5K are compressed and presented with .zip file extension
Note* The URL listed was for the third storm of 2018. The URL for this image will be dependent on storms that occur during a calendar year. This image will not be available if storms have not been active.



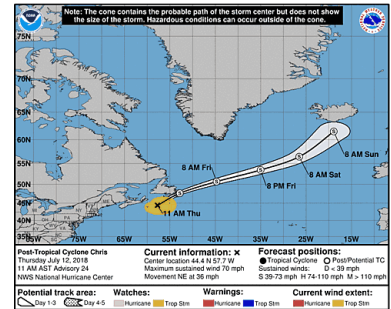
Title-43: Eastern Pacific Basin Tropical Storm [NHC]
URL: https://www.nhc.noaa.gov/storm_graphics/EP11/EP112018_current_wind_sm2.png
GOES-N fn epNNYYws.png (where NN = Storm Seq No; YY = Calendar Year)
GOES-R fn Z_PWEA98KNHCddhmm_C_KWIN_yyyyMMddhhmmss_nnnnnn-3-EPNNYYWS.PNG
 "Z" Originating center local product identifier
 T1 P - Pictorial information (Binary coded)
 T2 W - Wind
 A1 F - 90°W - 180° tropical belt
 A2 A - Analysis (00 hour)
 ii 98 - Air properties for the Earth's surface
 Pri 4
 Rev 2018-07-10
Note* Multiple AT storms per calendar year; folders EP01-EP30 pre-staged at NHC.
Note* Files larger than 5K are compressed and presented with .zip file extension
Note* The URL listed was for the eleventh storm of 2018. The URL for this image will be dependent on storms that occur during a calendar year. This image will not be available if storms have not been active.



Title-44: Atlantic Basin Tropical Storm [NHC] 5-Day Forecast Track and Current Winds
URL: https://www.nhc.noaa.gov/storm_graphics/AT03/AL032018_5day_cone_with_line_and_wind_sm2.png

GOES-N fn alNNYY5d.png (where NN = Storm Seq No; YY = Calendar Year)
GOES-R fn Z_PWEA98KNHCddhmm_C_KWIN_yyyyMMddhhmmss_nnnnnn-3-ALnnyy5D.PNG

- "Z"** Originating center local product identifier
- T1** P - Pictorial information (Binary coded)
- T2** W - Wind
- A1** E - 0° - 90°W tropical belt
- A2** W - (not assigned)
- ii** 98 - Air properties for the Earth's surface
- Pri** 3
- Rev** 2018-08-17
- Note*** Multiple AT storms per calendar year; folders AT01-AT30 pre-staged at NHC
- Note*** Files larger than 5K are compressed and presented with .zip file extension
- Note*** The URL listed was for the third storm of 2018. The URL for this image will be dependent on storms that have occurred during a calendar year. This image will not be available if storms have not been active.



Title-45: Eastern Pacific Basin Tropical Storm [NHC] 5-Day Forecast Track and Current Winds
URL: https://www.nhc.noaa.gov/storm_graphics/EP14/EP142018_5day_cone_with_line_and_wind_sm2.png

GOES-N fn epNNYY5d.png (where NN = Storm Seq No; YY = Calendar Year)
GOES-R fn Z_PVFW98KNHCddhmm_C_KWIN_yyyyMMddhhmmss_nnnnnn-3-ALnnyy5D.PNG

- "Z"** Originating center local product identifier
- T1** P - Pictorial information (Binary coded)
- T2** W - Wind
- A1** F - 90°W - 180° tropical belt
- A2** W - (not assigned)
- ii** 98 - Air properties for the Earth's surface
- Pri** 3
- Rev** 2018-08-17
- Note*** Multiple EP storms per calendar year; folders EP01-EP30 pre-staged at NHC
- Note*** Files larger than 5K are compressed and presented with .zip file extension
- Note*** The URL listed was for the fourteenth storm of 2018. The URL for this image will be dependent on storms that have occurred during a calendar year. This image will not be available if storms have not been active.

