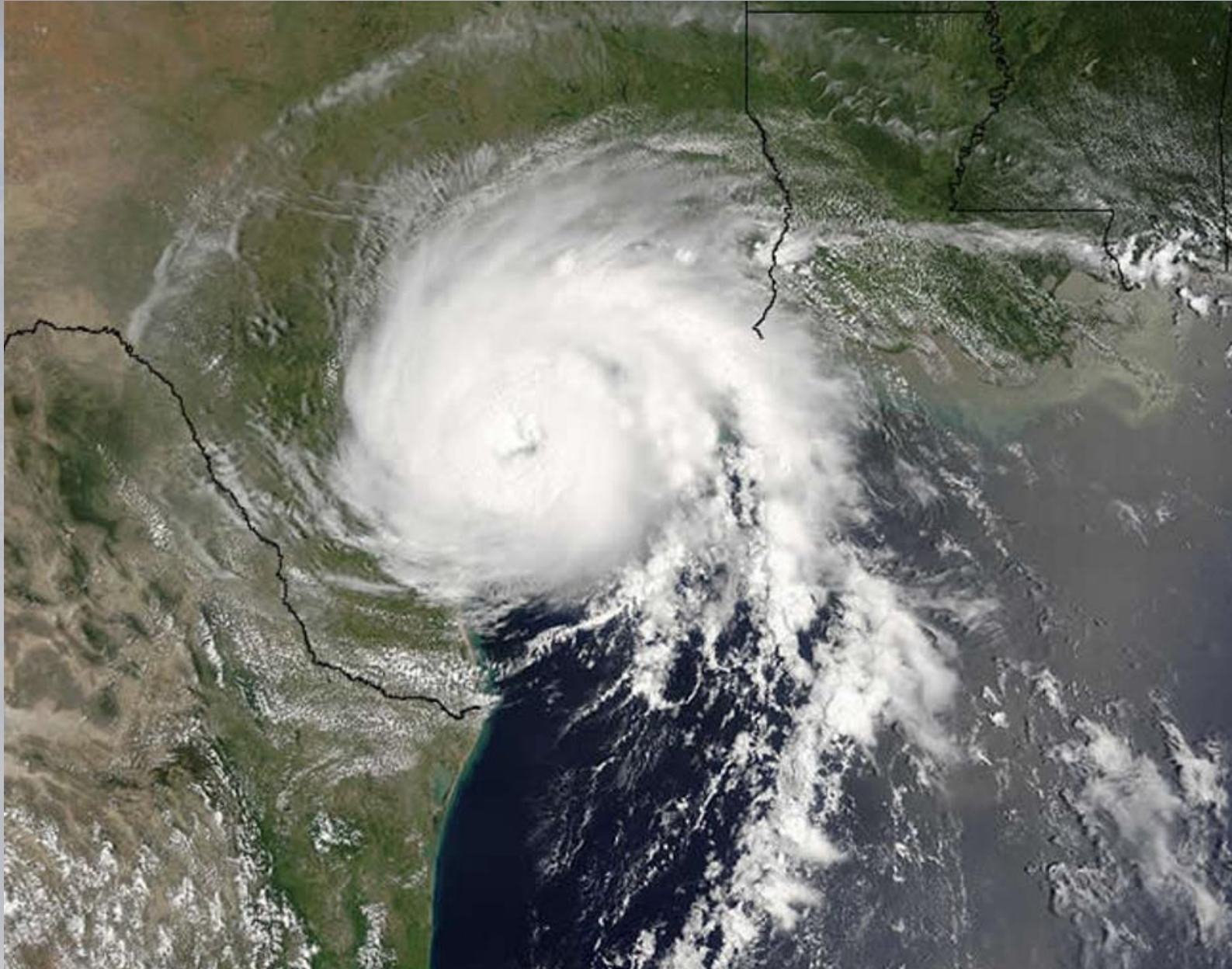


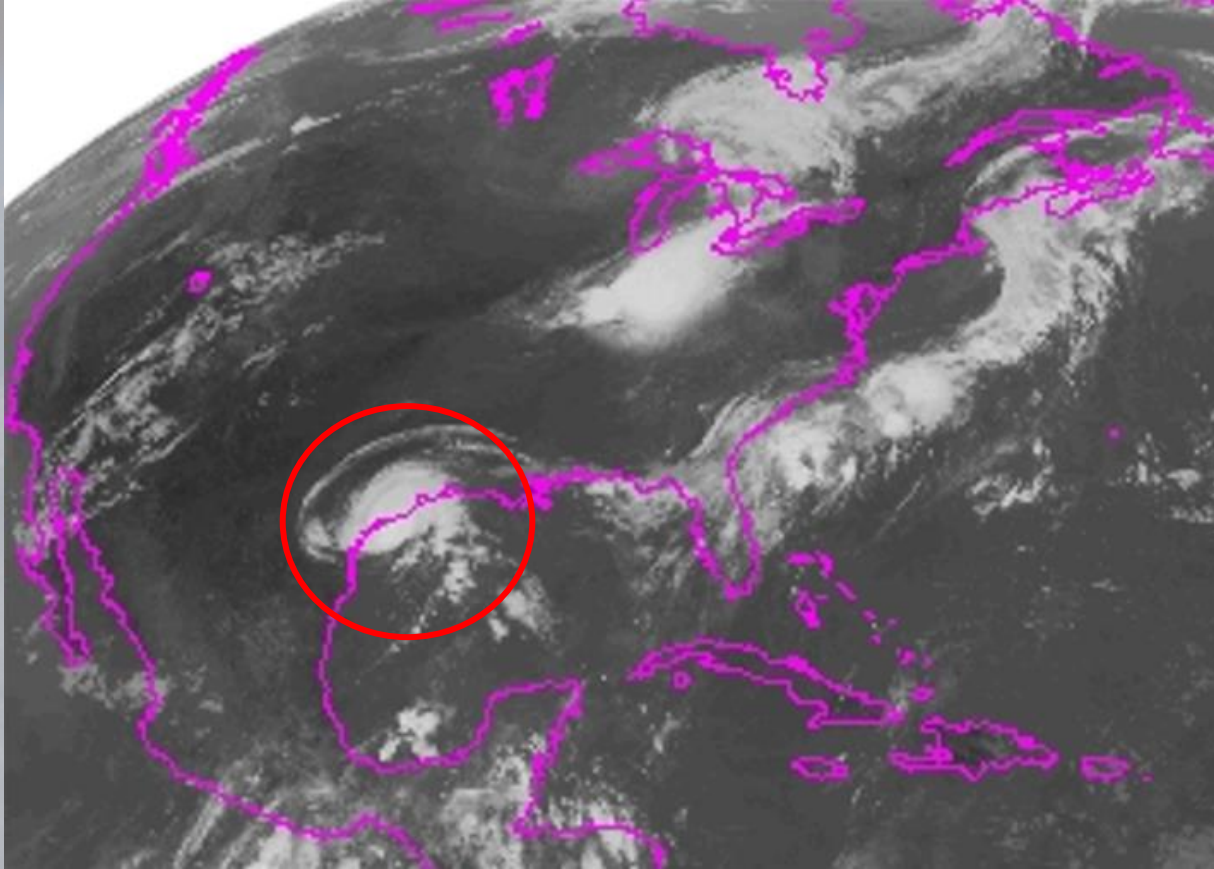
Hurricane Claudette Remnants



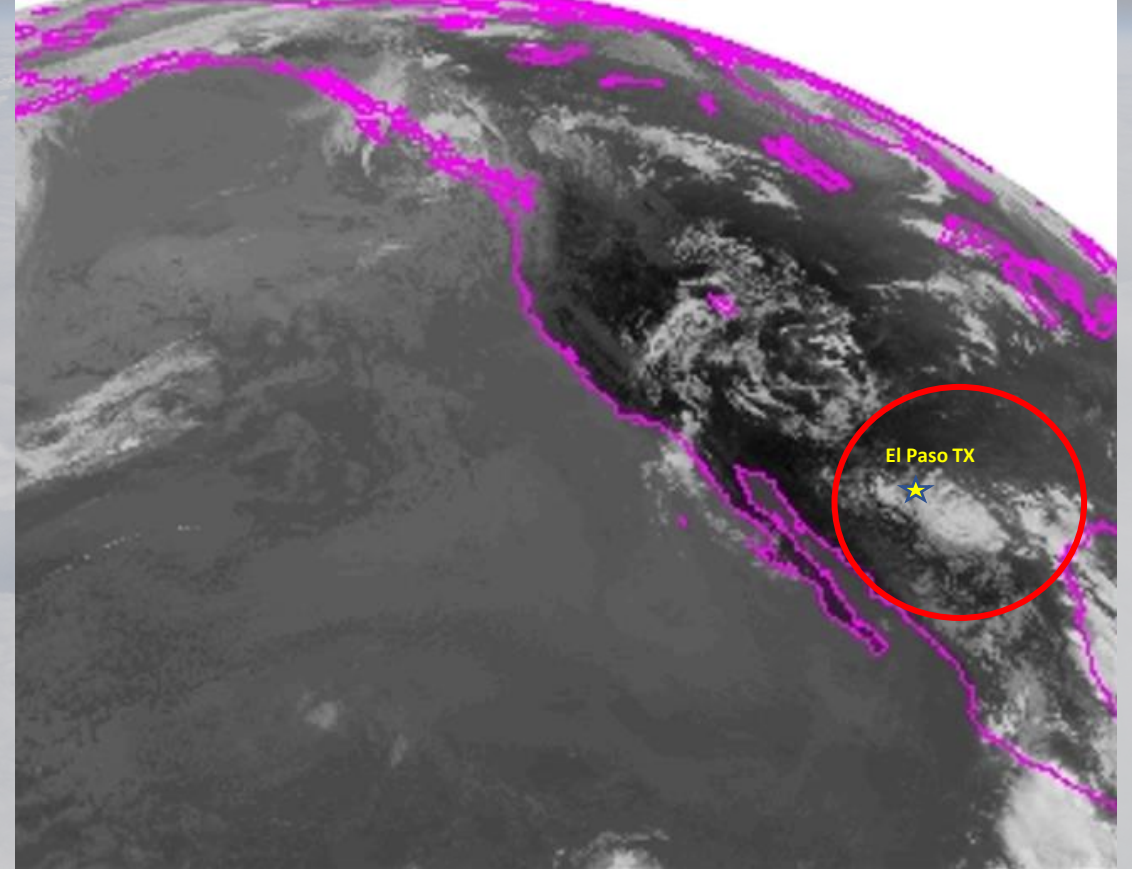
Hurricane Claudette was a tropical cyclone that affected Texas during the 2003 Atlantic Hurricane season. It was the first hurricane of the season. It made landfall over Port O'Connor, Texas on July 15, 2003 as a Category 1 hurricane. The remnants of this hurricane moved along the international border and eventually passed through the El Paso and southern New Mexico regions on July 17.



Hurricane Claudette Track

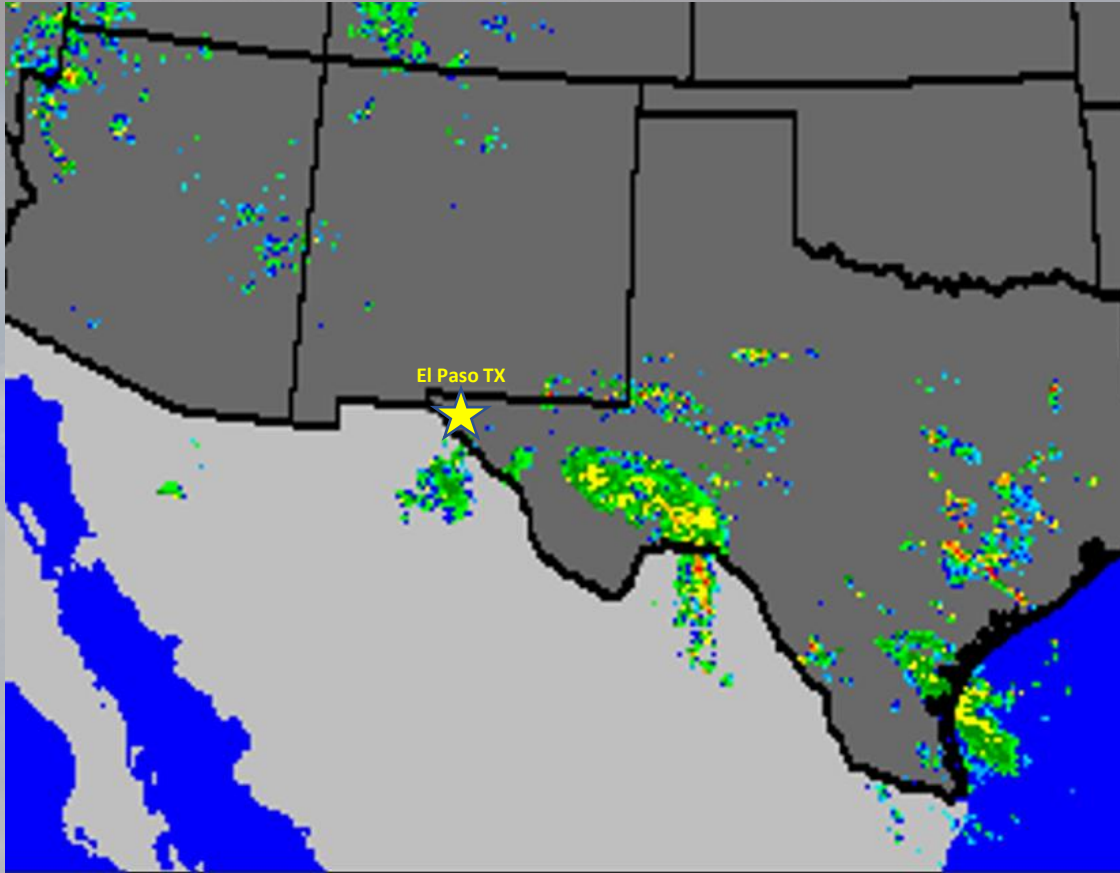


Claudette at Landfall

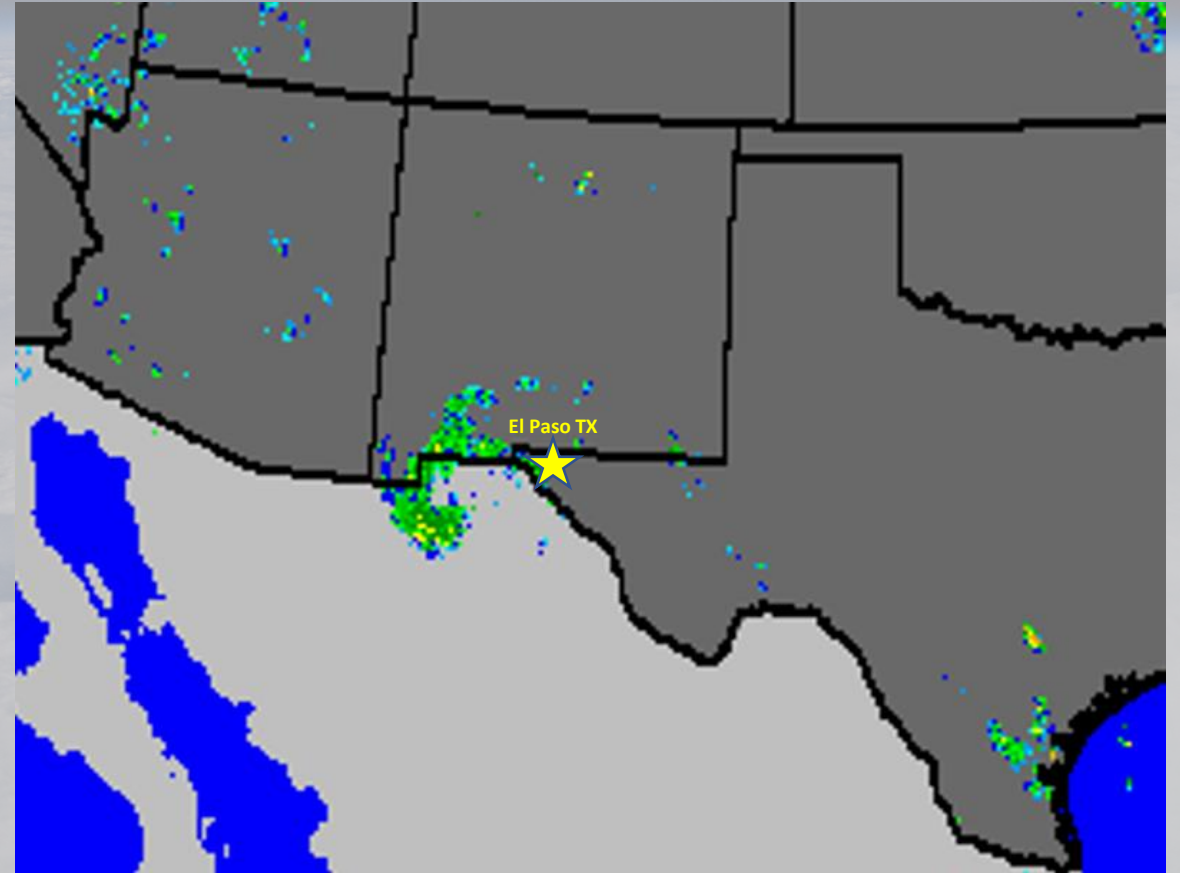


Claudette Remnants over El Paso Region

Satellite imagery shows that Claudette retained the shape of a tropical cyclone when it passed through the El Paso region

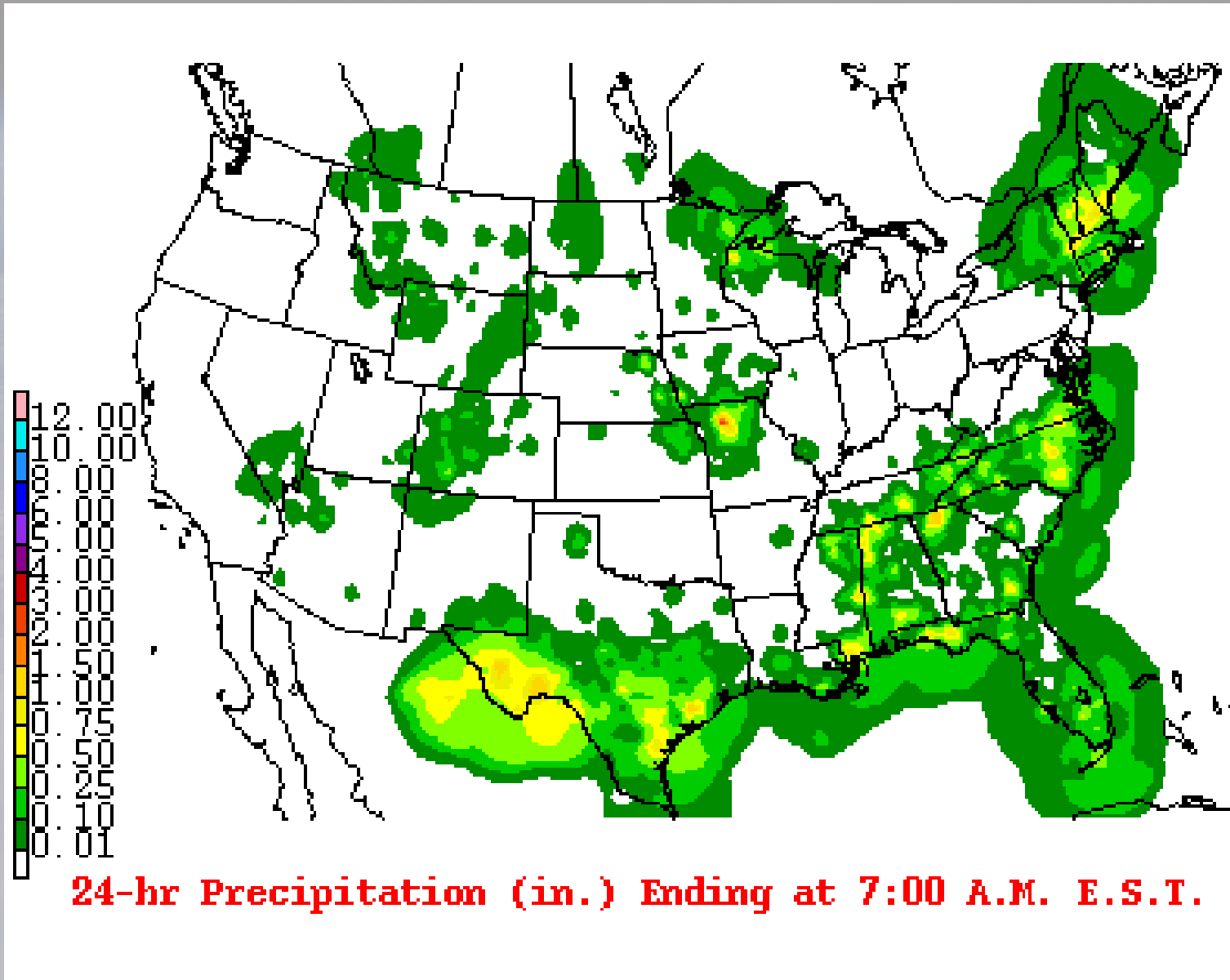


Claudette's Remnants 6PM
July 16

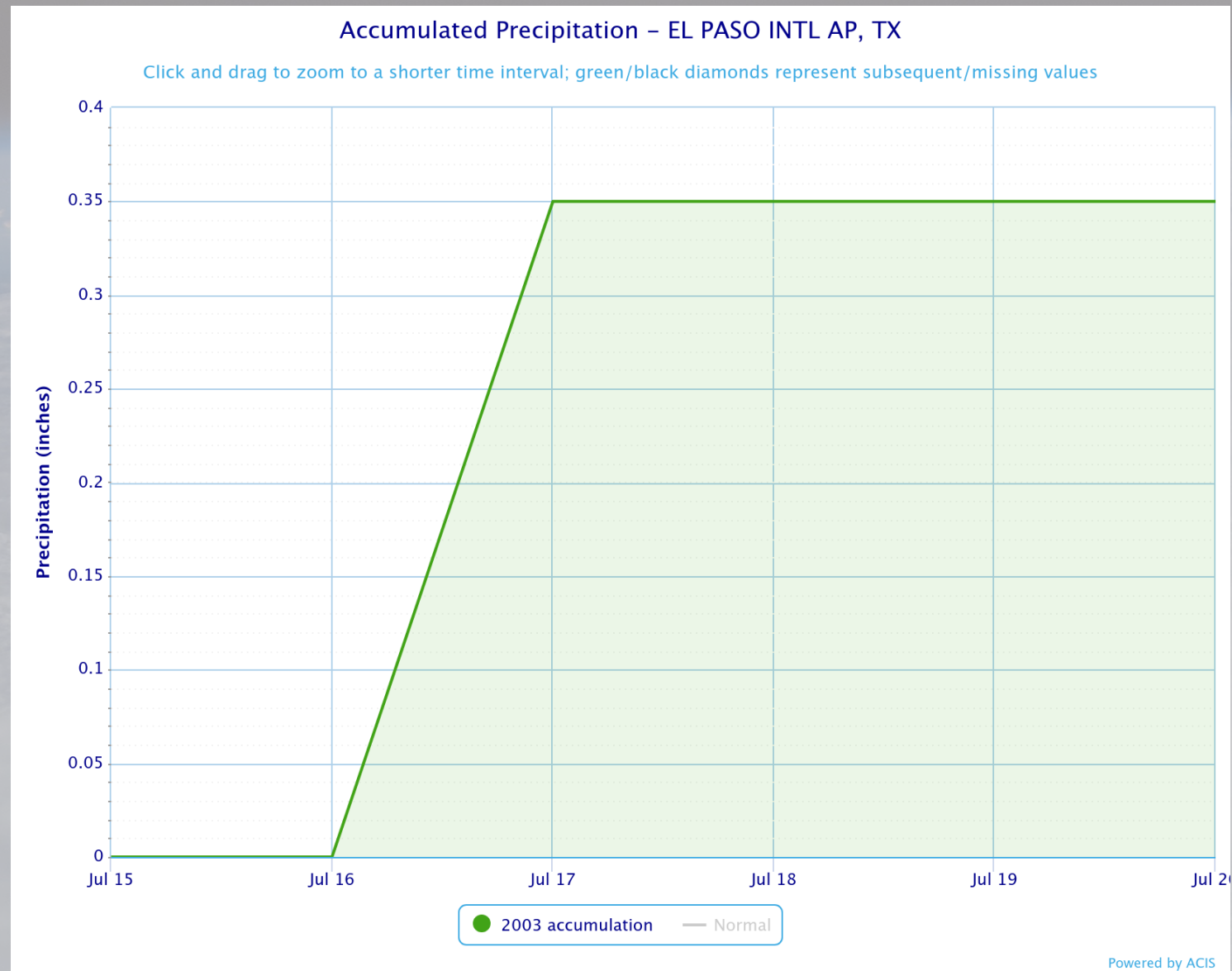


Claudette's Remnants 6AM
July 17

Radar imagery of the passage of Claudette's Remnants through the El Paso region



24 hr Rainfall totals from Claudette's Remnants July 17



Rainfall totals from Claudette's Remnants recorded from the El Paso International Airport amounted to 0.35 inches for July 16 -17