

DECEMBER 2014

Weather Digest

Weather Summary

Significant Events

Special Features

**Temperature &
Precipitation**

Severe Weather

December 2014 Weather Summary

December was a relatively quiet month overall, as are most Decembers. However the month ended with a bang. The month started off dry, with temperatures well above normal. Temperatures were above normal up until the day before Christmas, before several below normal days occurred. December ended up being a bit below normal for precipitation around most of the area. The exceptions were the Tularosa Basin and Hudspeth County, which both ended up above normal.

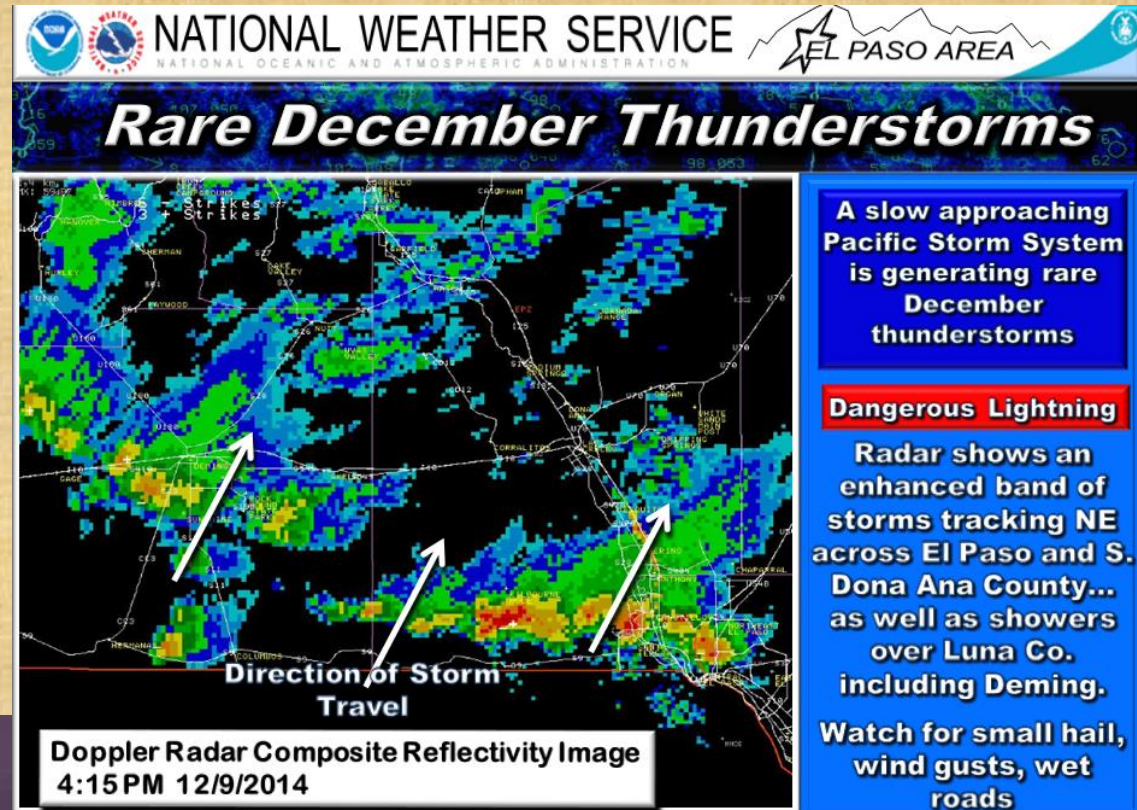
On December 9th, a weak short wave moved east across the area, and combined with an unstable airmass, kicked off some rather rare December thunderstorms. Otherwise significant storm systems avoided the area until near the end of the month. On December 22nd, a strong upper trough moved across the central Rocky Mountains, producing moderately strong winds over our area. On December 26th, another strong trough passed across northern New Mexico for another bout of strong southwest winds. This storm eventually deposited up to 6 inches of snow in the Sacramento Mountains.

The final days of the month witnessed a strong winter pattern set up. This was produce by strong, chilly northwest flow aloft, and a strong cold front that pushed west across the area from the Central Plains on the 30th. As this front came through, it produced strong wind gusts of 45-60 mph along west slopes of area mountains such as the Franklin and Organ Mountains. This also ushered in a period

Weather Summary (continued)

of cold weather that would ultimately last several days into the new year of 2015. This pattern would eventually deposit light amounts of snow over the lowlands and moderate amounts of snow over the mountains, though most of it fell after the first of the year.

December Weather started out with a rare Thunderstorm event !



Winter arrives Dec 14 3" Cloudcroft

© CloudcroftWebcam.com Sun Dec 14, 2014 09:17:17 AM



7 Inches of Snow falls at Cloudcroft December 26!

© CloudcroftWebcam.com Fri Dec 26, 2014 11:45:00 AM



Sacramento Mountains December 26 !



December 26 Trace to 1" in El Paso...Trans Mtn Pass closed with 2 inches.



December 26 west side Franklin Mountains 2 “



The winter driving fun begins in El Paso December 26 !





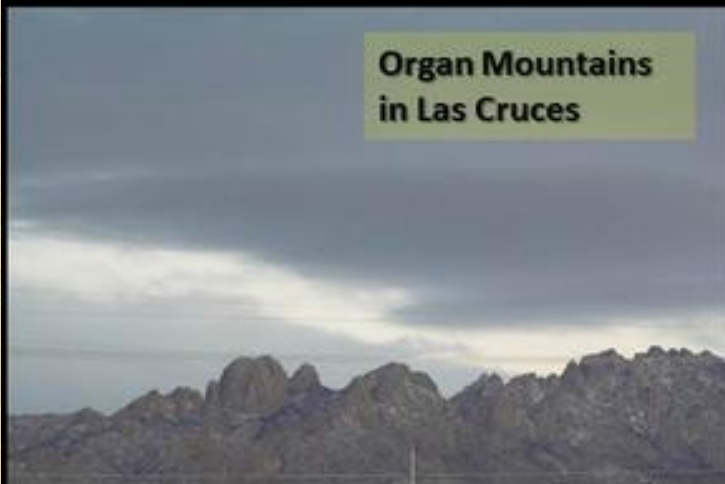
The Challenge of Winter Driving December 26 !



Picturesque Organ Mountains December 26.



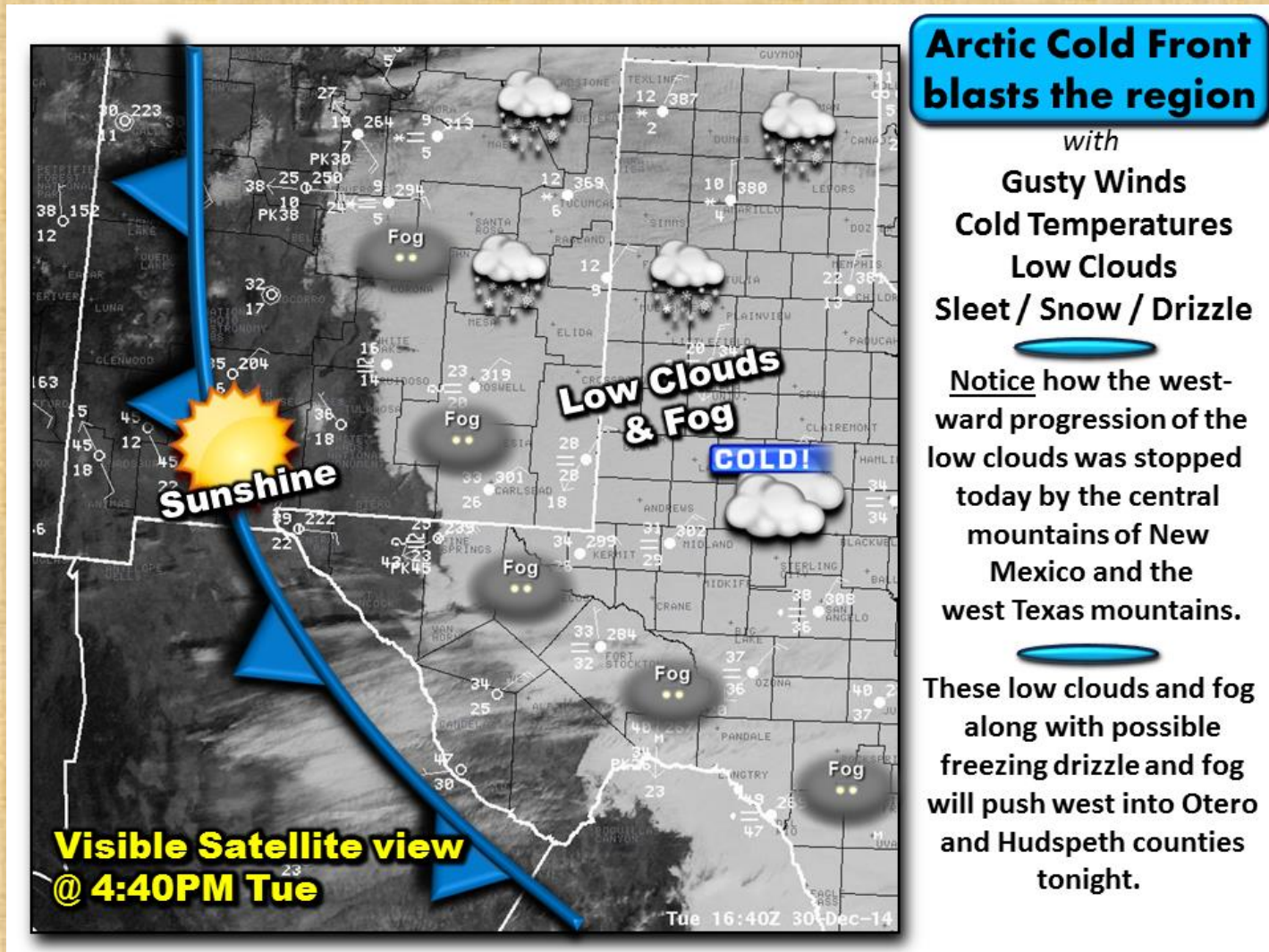
December 26 area snows.



Weather reports December 2014

Date/Time	Location	Event
12/22/2014 520 PM	SAN AUGUSTIN PASS-DONA ANA	53 MPH PEAK WIND
12/22/2014 1115 PM	NORTHRUP STRIP-DONA ANA	51 MPH PEAK WIND
12/22/2014 700 PM	10 NE EL PASO	56 MPH PEAK WIND
12/25/2014 1115 AM	SAN AUGUSTIN PASS-DONA ANA	60 MPH PEAK WIND
12/25/2014 341 PM	TWIN PEAKS-DONA ANA	58 MPH PEAK WIND
12/25/2014 322 PM	3 SE CHAPARRAL-DONA ANA	52 MPH PEAK WIND
12/25/2014 140 PM	15 SW HACHITA-GRANT CO	54 MPH PEAK WIND
12/25/2014 500 PM	10 NE EL PASO	49 MPH PEAK WIND
12/26/2014 700 AM	2 SW CLOUDCROFT-OTERO CO	6.3 INCHES HEAVY SNOW
12/26/2014 700 AM	HIGH ROLLS-OTERO CO	3.5 INCHES HEAVY SNOW
12/30/2014 909 AM	5 NW EL PASO	58 MPH PEAK WIND
12/30/2014 727 PM	6 NW EL PASO	63 MPH PEAK WIND
12/31/2014 739 AM	SUNSPOT-OTERO CO	45 MPH PEAK WIND
12/31/2014 1223 AM	NWS SANTA TERESA-DONA ANA	44 MPH PEAK WIND

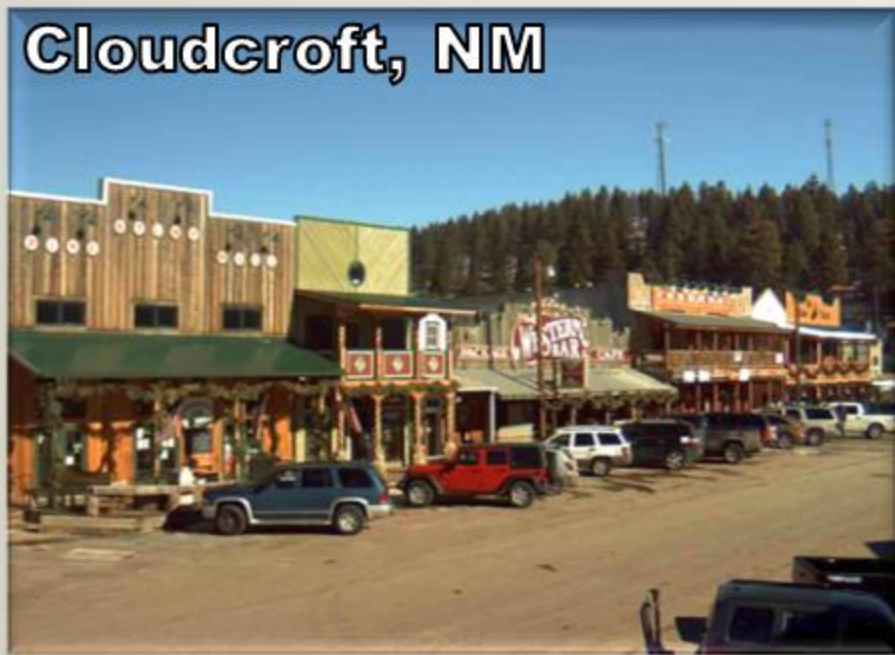
Arctic Air Blast Arrives in the Borderland Tuesday December 30.



Sacramento Mountains

(As Shallow Cold Air Mass Arrives 12/30/14)

Cloudcroft, NM



Elevation: 8797'

10am Temp: **40**

Sunny Skies

Mayhill, NM



Elevation: 6642'

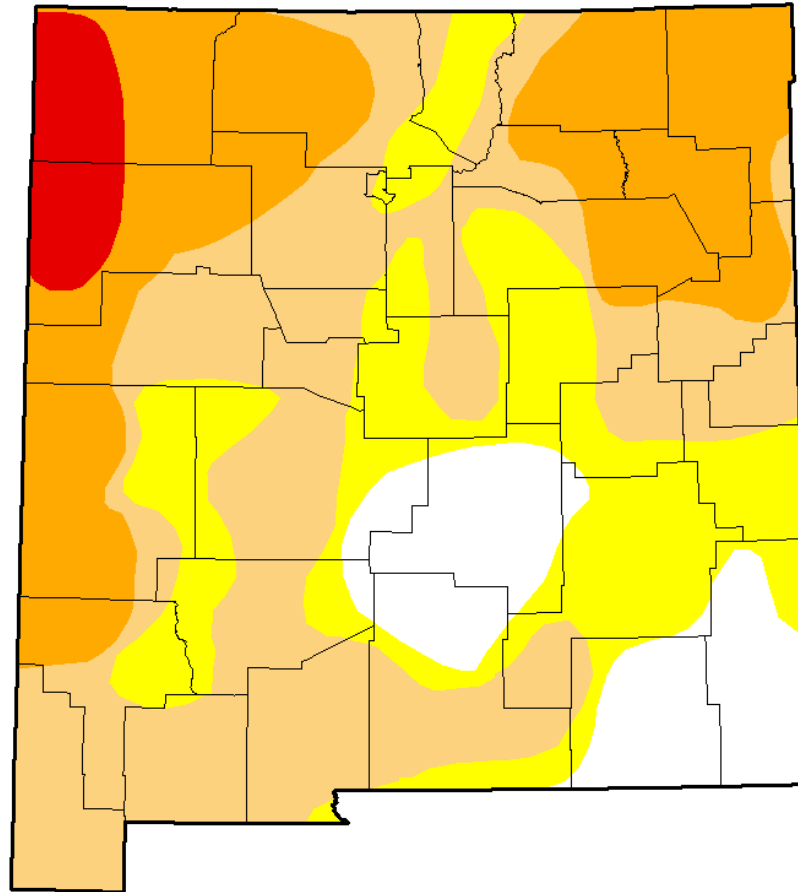
10am Temp: **17**

Overcast – Freezing Fog

Current drought conditions for New Mexico and 3 month change






- Abnormally Dry – D0
- Moderate Drought – D1
- Severe Drought – D2
- Extreme Drought – D3
- Exceptional – D4

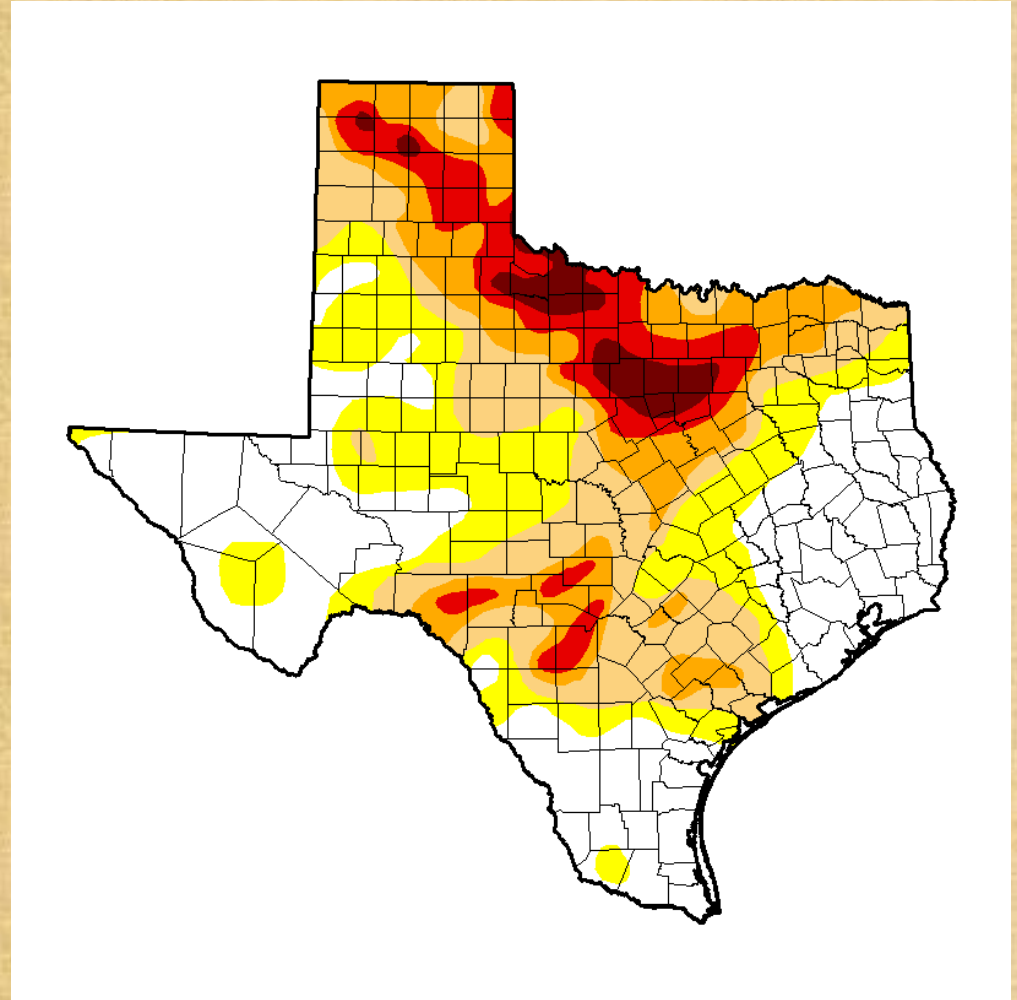
December 30 !



Current drought conditions for Texas as of December 30.

Intensity:

-  • D0 - Abnormally Dry
-  • D1 - Moderate Drought
-  • D2 - Severe Drought
-  • D3 - Extreme Drought
-  • D4 - Exceptional Drought



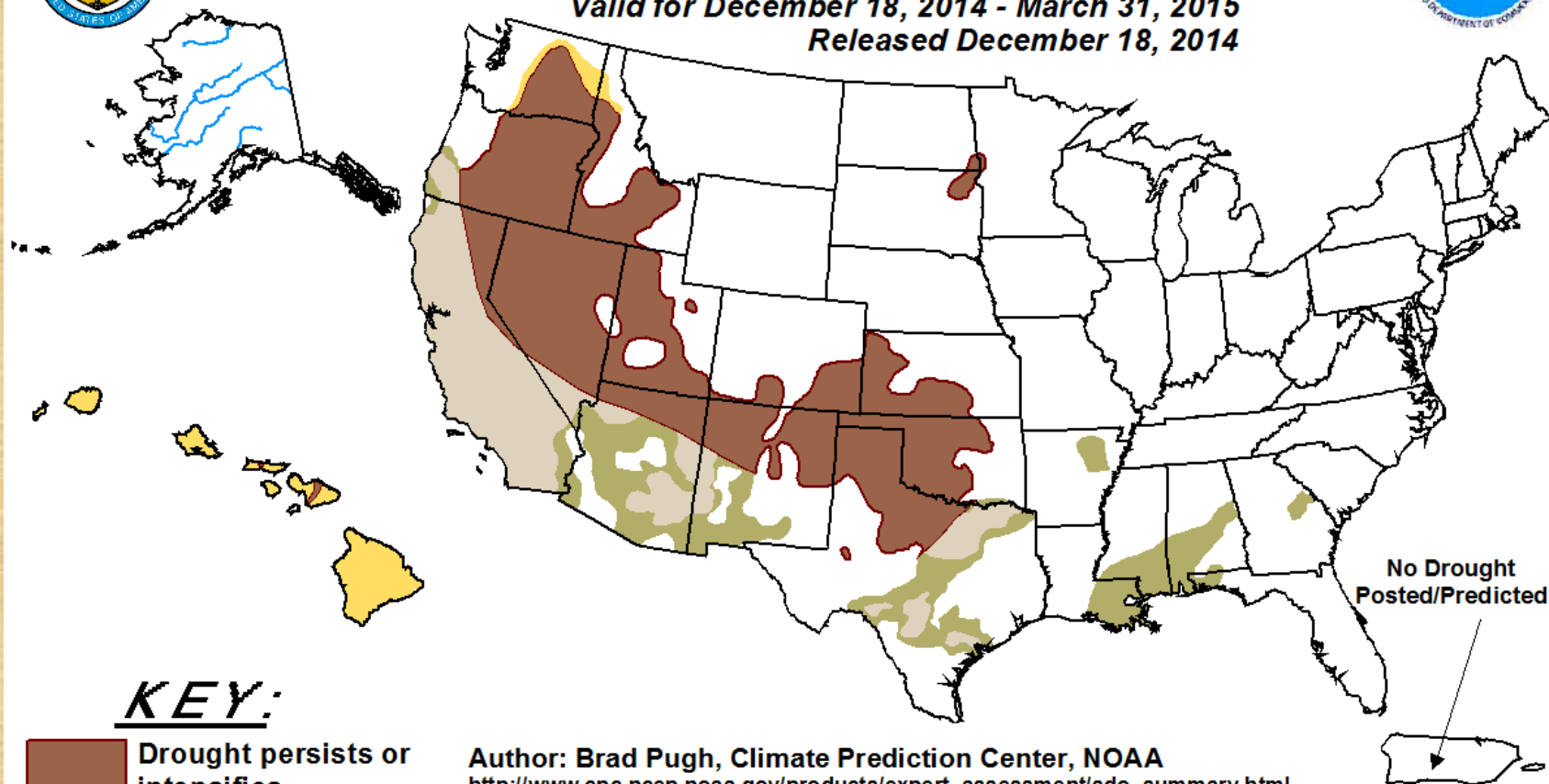


U.S. Seasonal Drought Outlook

Drought Tendency During the Valid Period

Valid for December 18, 2014 - March 31, 2015

Released December 18, 2014



KEY:



Drought persists or intensifies



Drought remains but improves



Drought removal likely



Drought development likely

Author: Brad Pugh, Climate Prediction Center, NOAA

http://www.cpc.ncep.noaa.gov/products/expert_assessment/sdo_summary.html

Depicts large-scale trends based on subjectively derived probabilities guided by short- and long-range statistical and dynamical forecasts. Short-term events -- such as individual storms -- cannot be accurately forecast more than a few days in advance. Use caution for applications -- such as crops -- that can be affected by such events. "Ongoing" drought areas are approximated from the Drought Monitor (D1 to D4 intensity).

For weekly drought updates, see the latest U.S. Drought Monitor.

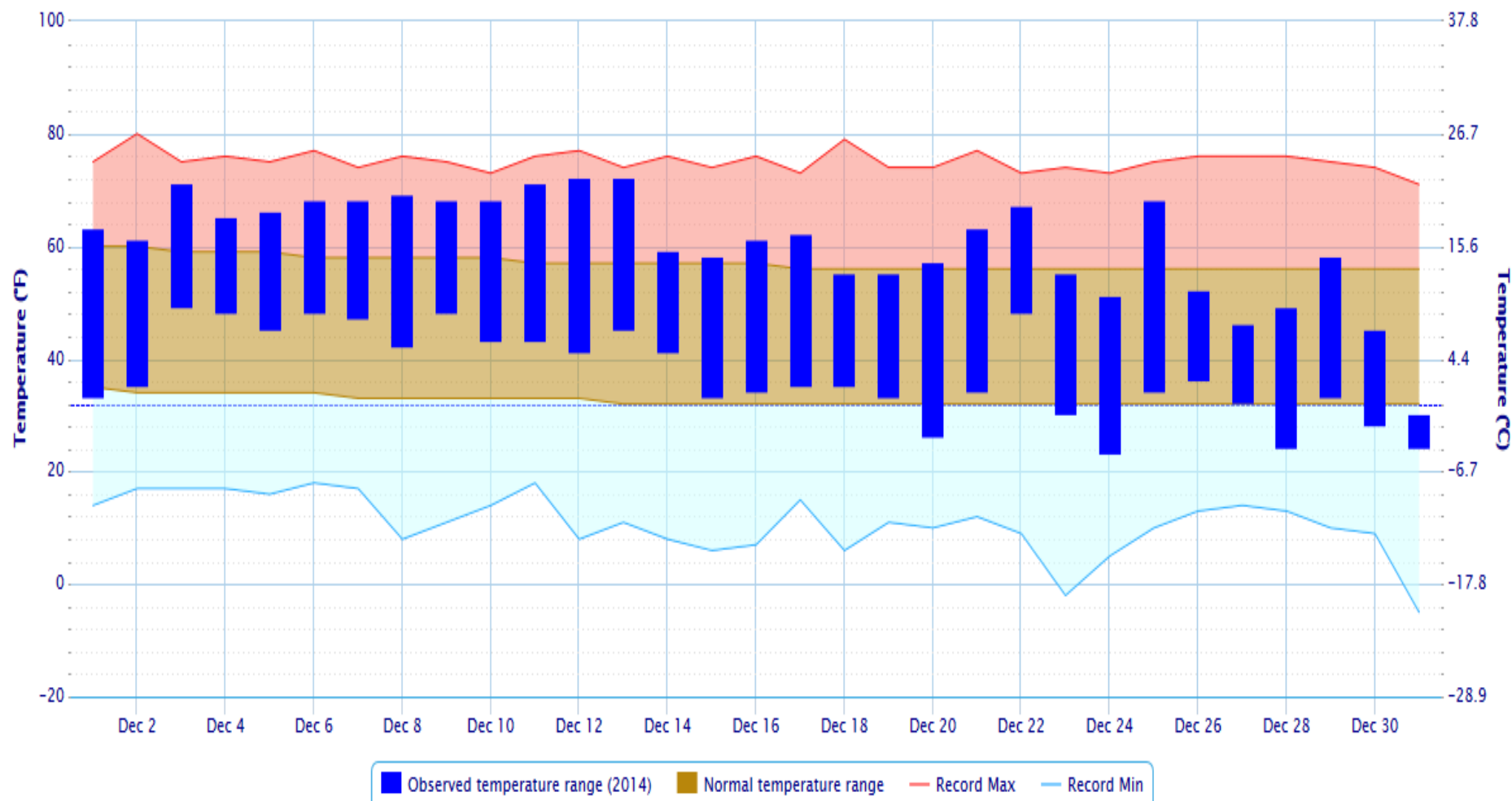
NOTE: The tan area areas imply at least a 1-category improvement in the Drought Monitor intensity levels by the end of the period although drought will remain.

The Green areas imply drought removal by the end of the period (D0 or none)

Daily Temperature Data - El Paso Area, TX (ThreadEx)

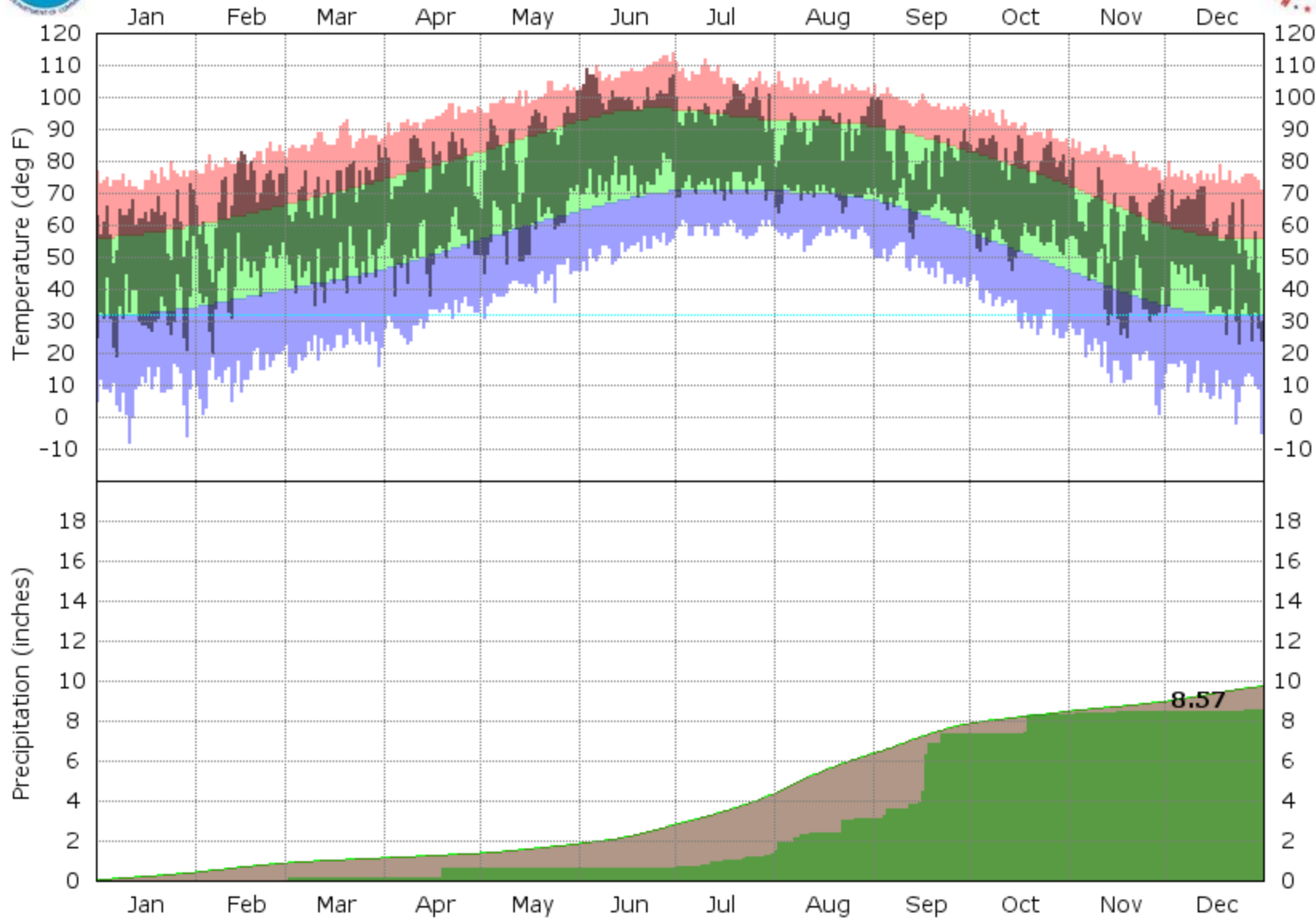
December 2014

Period of Record - Max temperature: 1887-01-01 to 2015-01-02; Min temperature: 1879-01-01 to 2015-01-02. Normals period: 1981-2010. Click and drag to zoom chart.



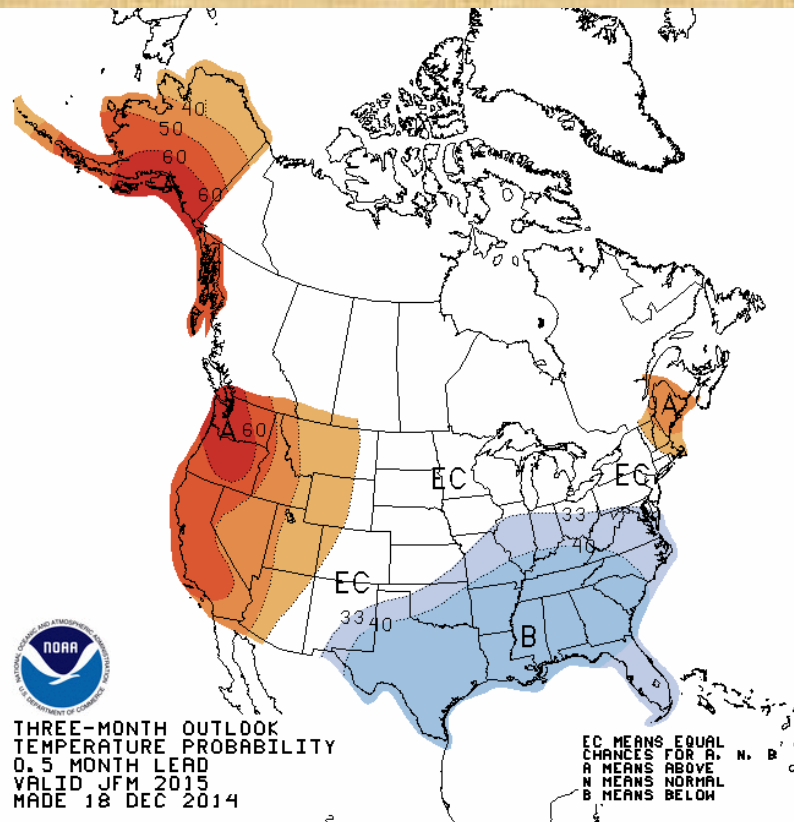


El Paso TX - 2014

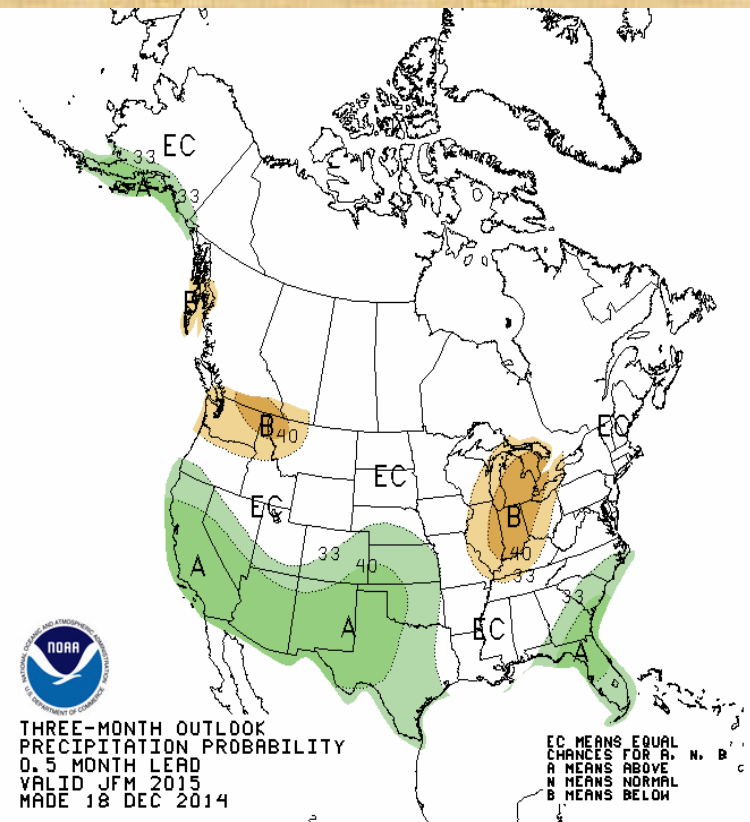


Temperature and precipitation outlook for January - March 2015

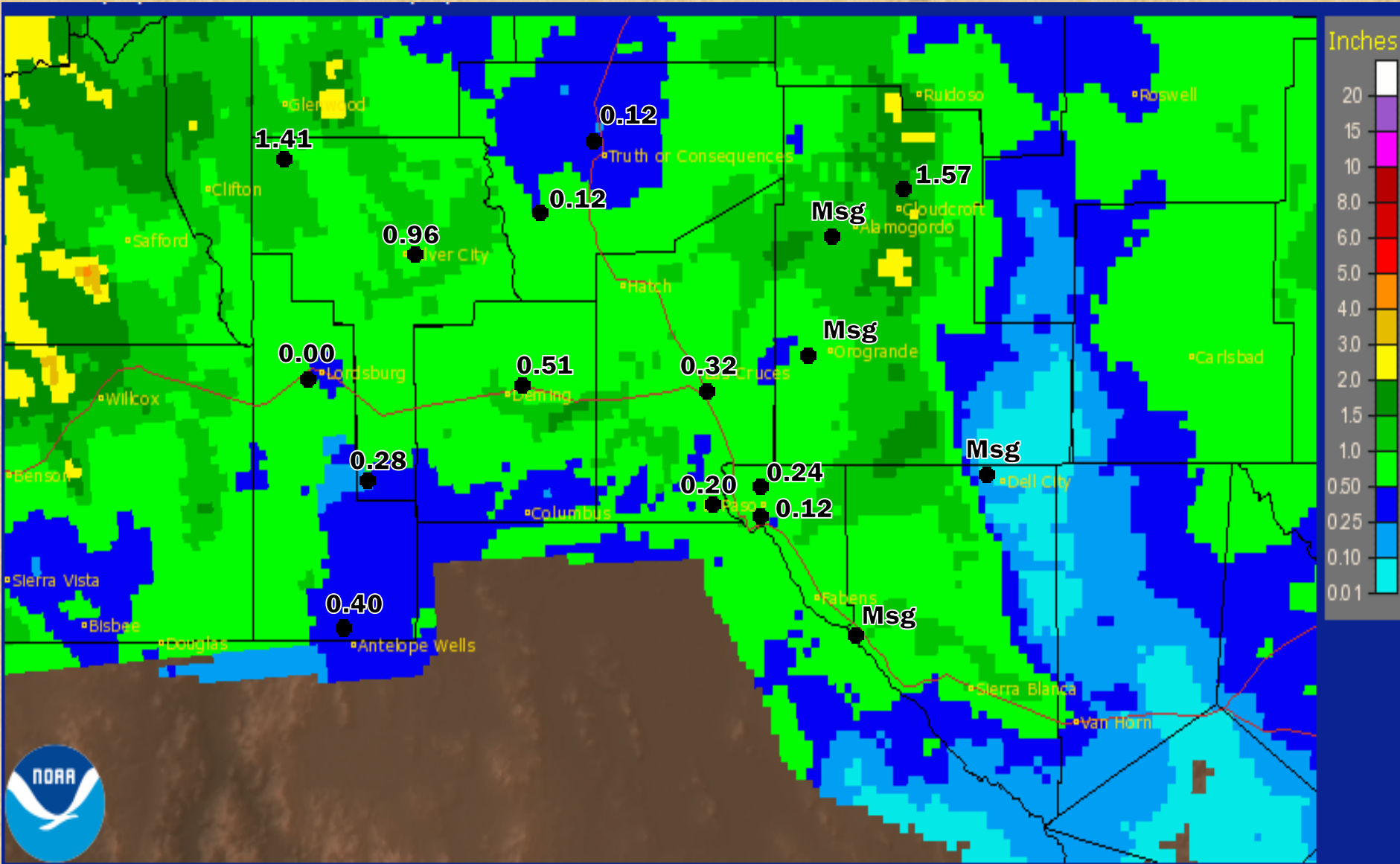
Temperature



Precipitation

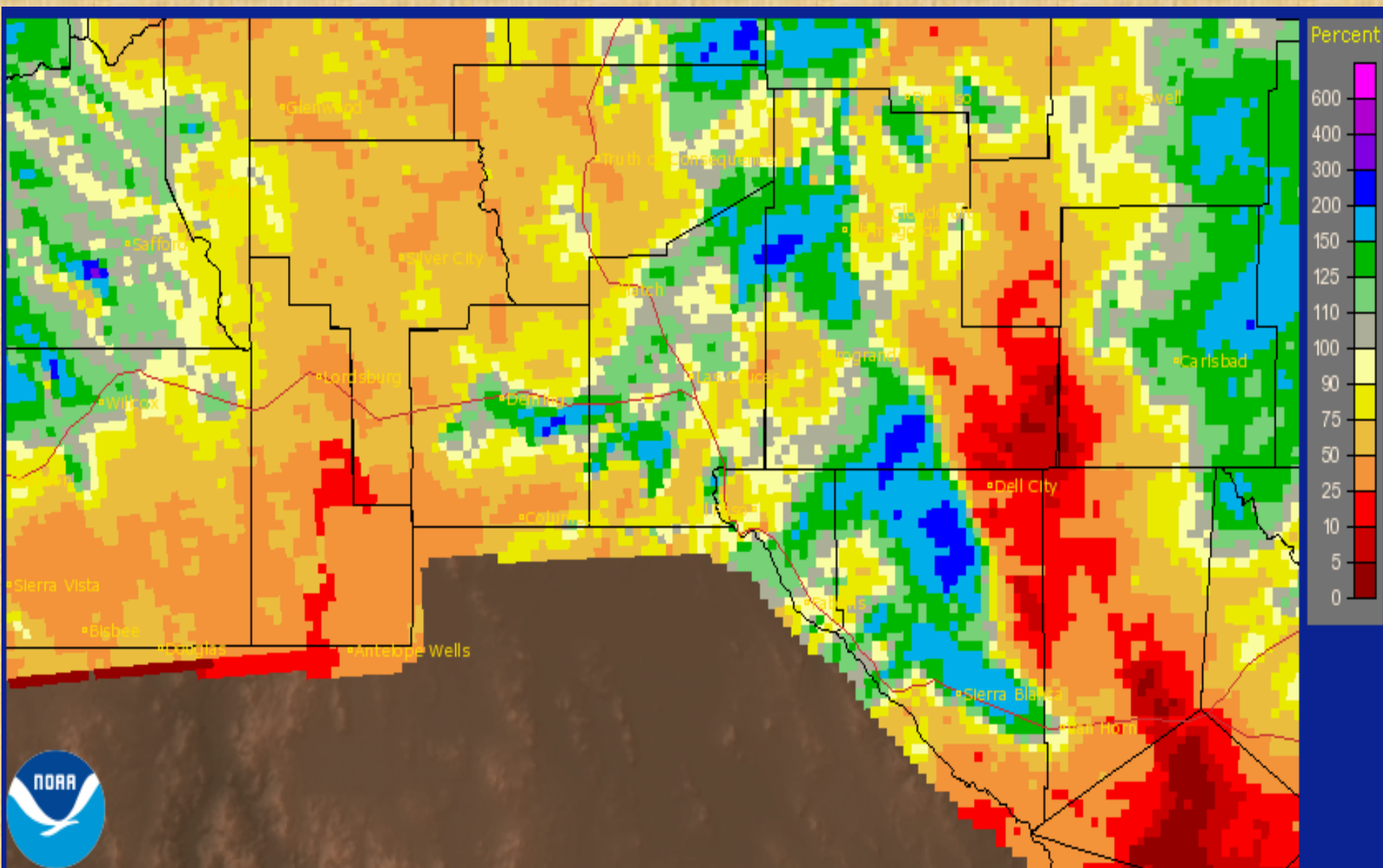


December 2014 radar rainfall estimate with surface rainfall reports



December 2014 Radar Rainfall Estimate

(Percent of normal)



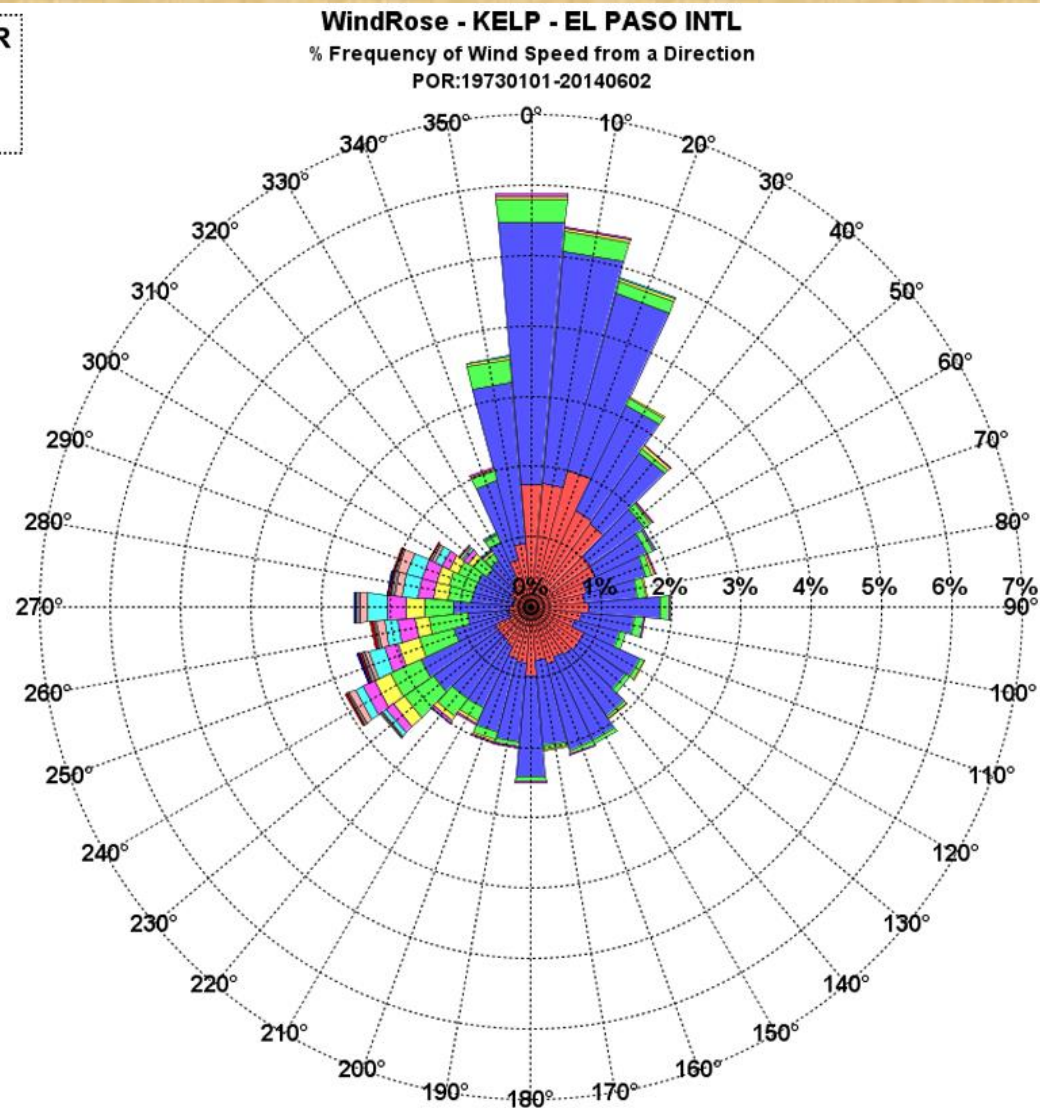
Special Features

<http://www.srh.noaa.gov/epz/?n=elpwindrosedata>

Month: DECEMBER

Calm: 13.59%

Variable: 1.46%



El Paso – 2014 Weather Review



Hottest Day
109F - June 3rd
Hottest Month
June - Avg High
was 101F

Coldest Day
19F - Jan. 7th
Coldest Month
January - Avg
Low was 33F

Highest Wind Gust
63 mph - May 11th
Windiest Month
April - Avg Wind
Speed 12 mph

Blowing Dust
18 Days

Total Snow :Trace
1 Day w/ Snow

100F Days - 30

Wettest Day
2.1" - Sep 17th-18th
Wettest Month
September
4.23 inches

Total Rain 8.57"
70 Days with
measured rain
33 days with
Thunderstorms

***Based on daily Observations at
the El Paso International Airport***