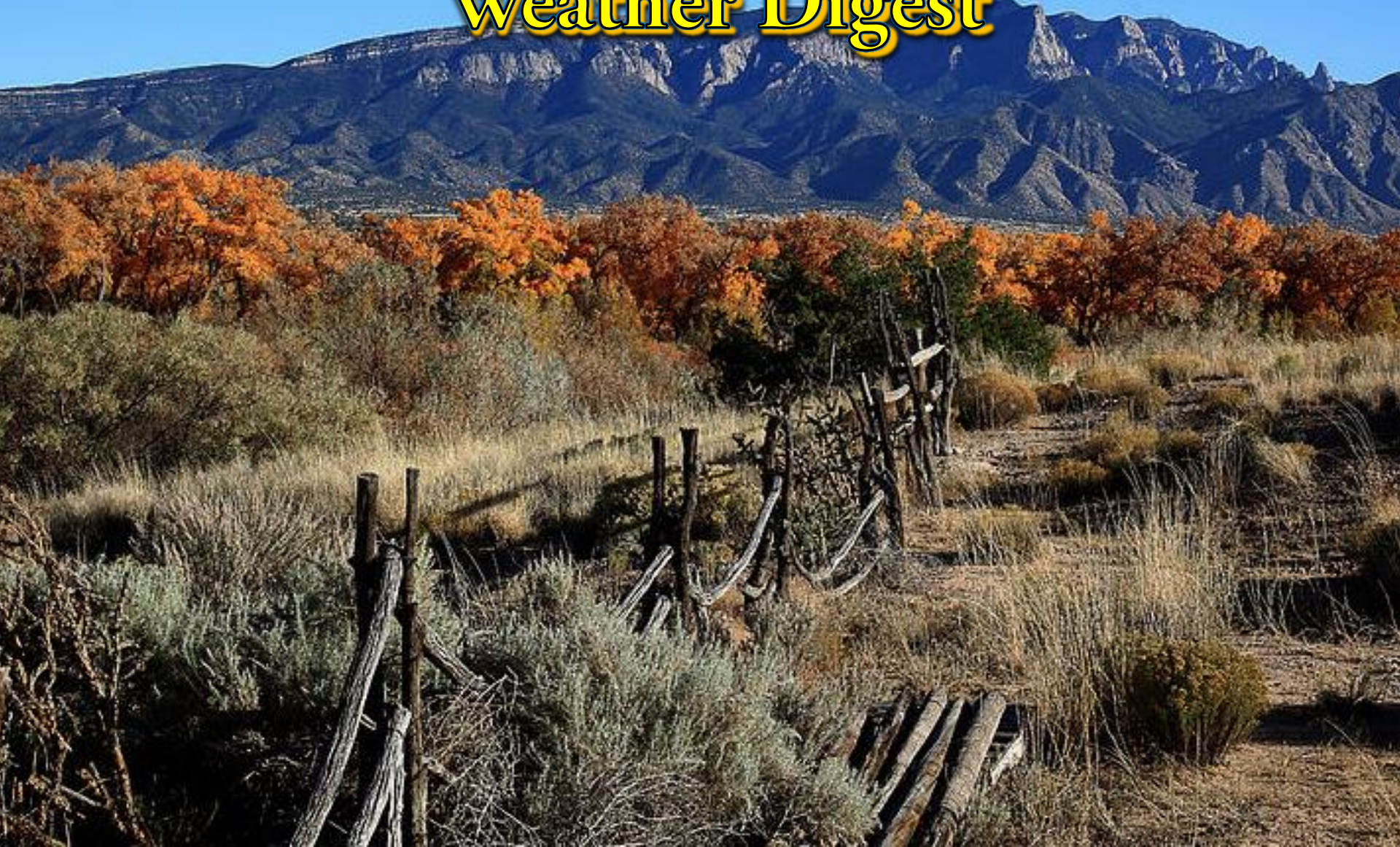


October 2018 Weather Digest



October 2018 Weather Summary

Thanks to several interactions with tropical moisture, October turned out to be quite a wet month, with much of the area reporting anywhere from 150 to 300 percent of normal rainfall. If October is added on to the monsoon season, it turns what was spotty rainfall coverage into a above normal rainfall across the entire area. This obviously has greatly eased the drought conditions. In fact you really have to look closely at the rainfall maps (see below) to find any areas with below normal monthly rainfall—mainly far eastern Otero and Hudspeth Counties. What caused the abnormally heavy rainfall? Several interactions with the tropical moisture to our south was the main cause, including two tropical systems that came nearby during the first half of the month.

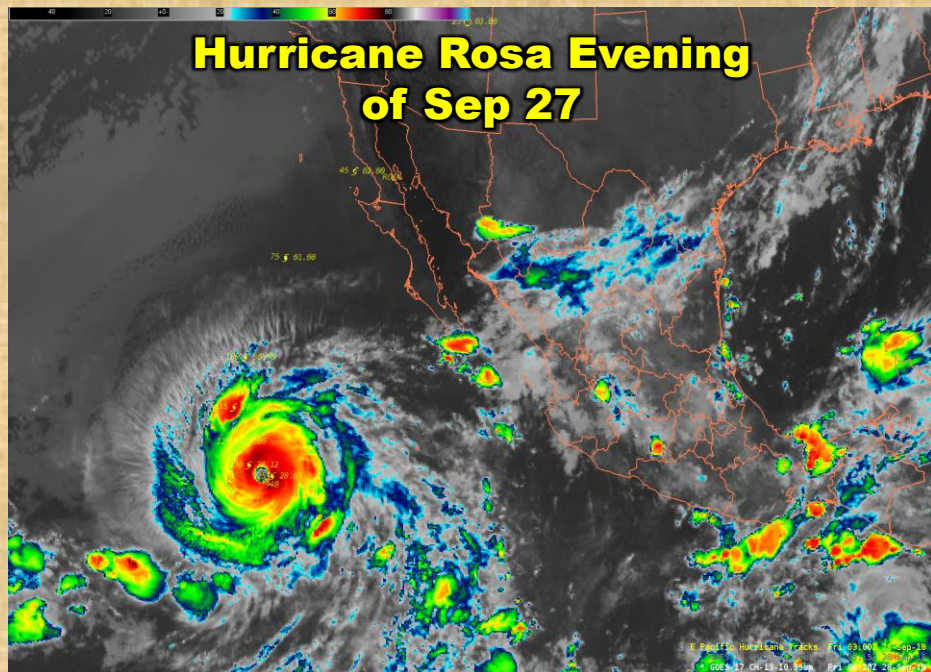
On October 2nd , the remnants of Hurricane Rosa moved across Arizona and western New Mexico, dropping some moderate to heavy rainfall. On October 12th, the remains of Hurricane Sergio moved across most of New Mexico, producing widespread moderate to heavy rainfall across the area. Other weather highlights included isolated thunderstorms on the 8th as a cold upper trough swept across the area. This also gave our higher mountain elevations their first snow of the season, though snowfall remained on the light side. A vigorous cold front pushed in from the east on the 15th, ushering in our coldest temperatures of the season. Thus began a four day stretch of cloudy, cold weather, with high temperatures remaining 15-20 degrees below normal. On October 23rd and 24th, an upper low moved over the area. The low was able to scoop up copious amounts moisture and spread moderate rainfall over the entire area.

October 2018 Weather Summary

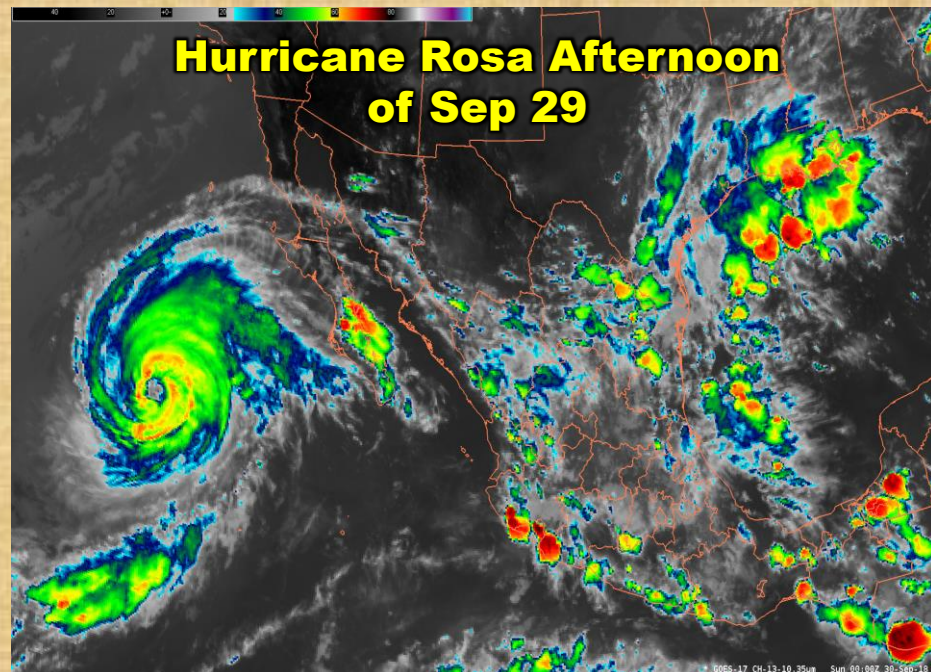
Looking at temperatures, the average high temperatures across the area were below normal for the majority of reporting sites, due mainly to extensive cloud cover mid month. Also due to extensive cloud cover, average low temperatures remained above normal, so much so that even with the cool average high temperatures, the overall mean daily (monthly) temperature was still above average.

Projecting out over the next few months, it looks fairly likely we are heading into a weak to moderate El Niño, which usually means above normal temperatures and precipitation for our area. It is also important to remember that even if this winter turns out wetter than normal, the number of days of rainfall could still vary from several light days each month to only a few days of heavy rain over the whole season (such as what happened over the winter of 2015-2016).

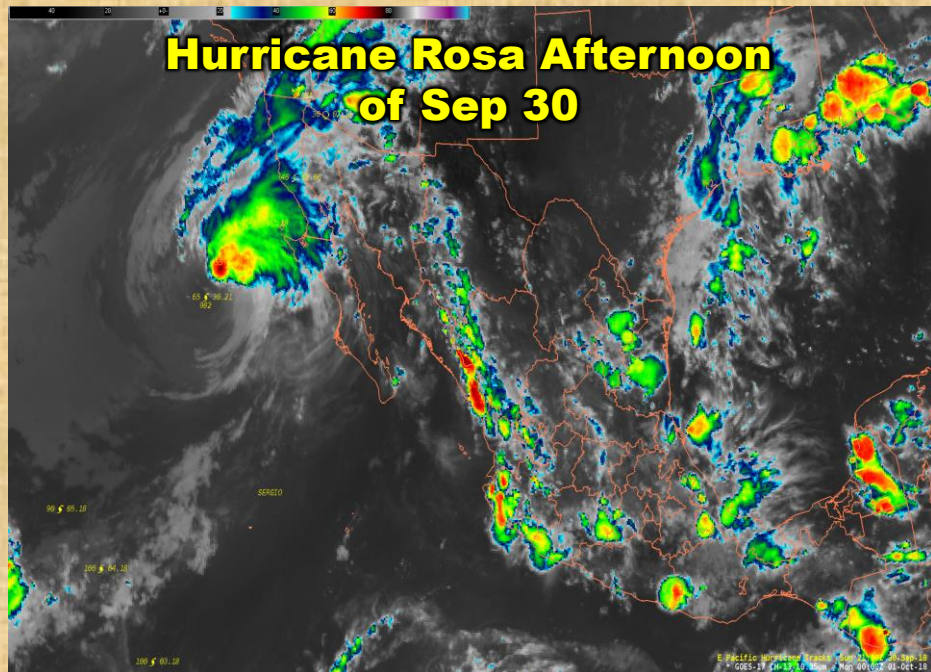
**Hurricane Rosa Evening
of Sep 27**



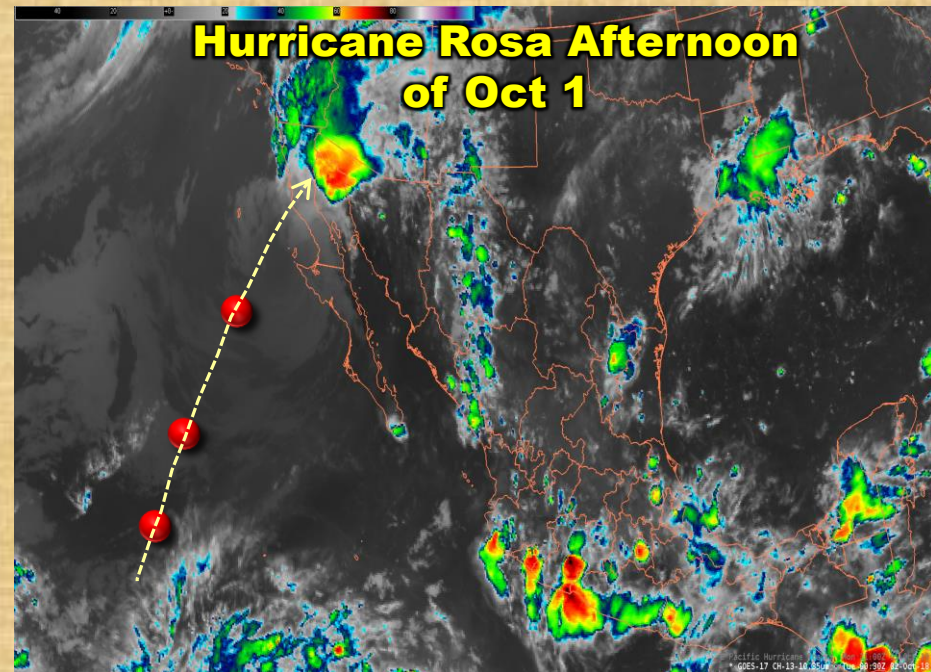
**Hurricane Rosa Afternoon
of Sep 29**



**Hurricane Rosa Afternoon
of Sep 30**



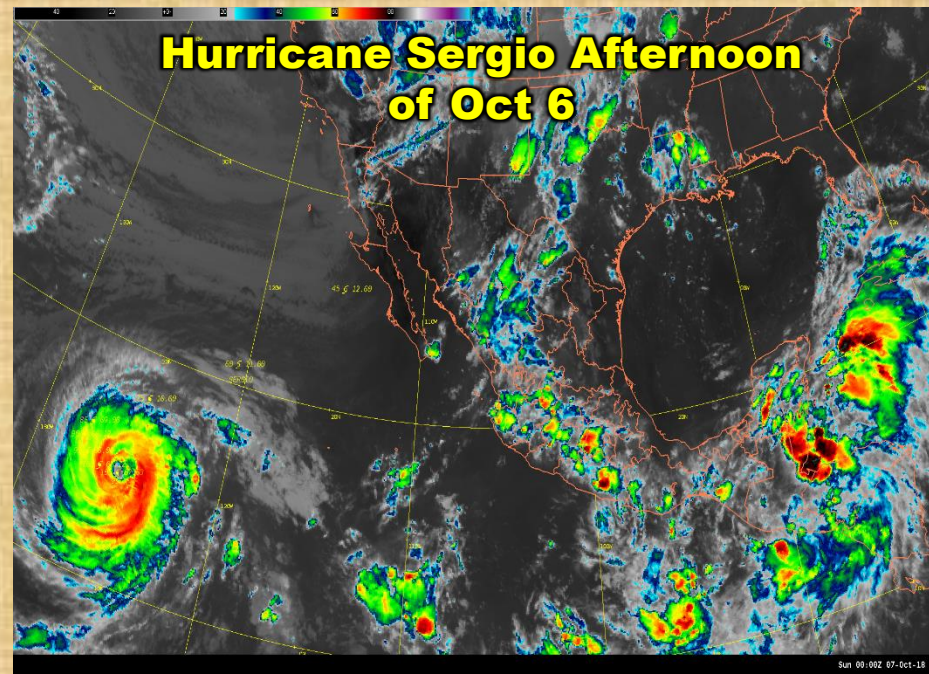
**Hurricane Rosa Afternoon
of Oct 1**



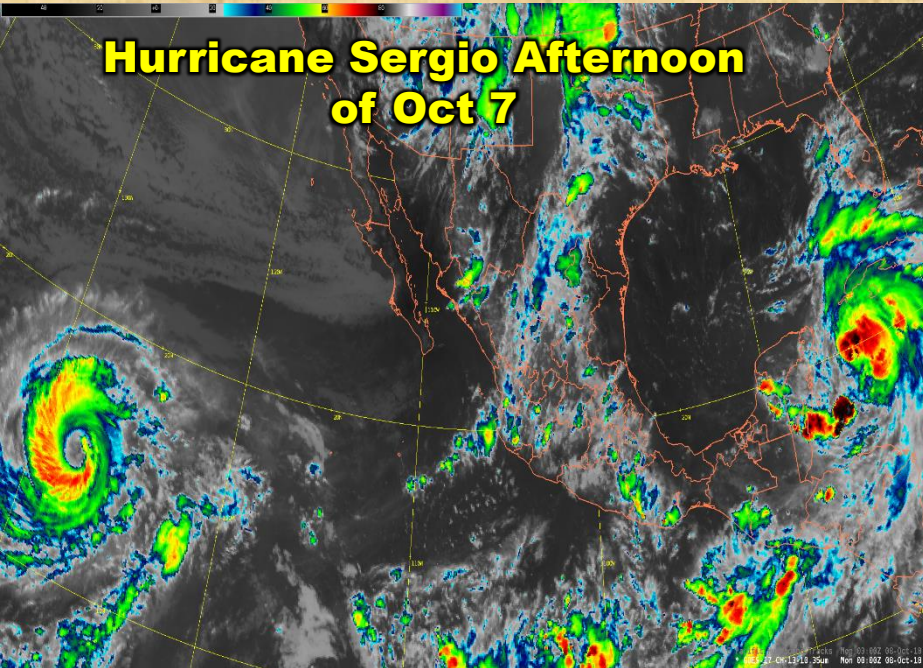
**Hurricane Sergio Afternoon
of Oct 5**



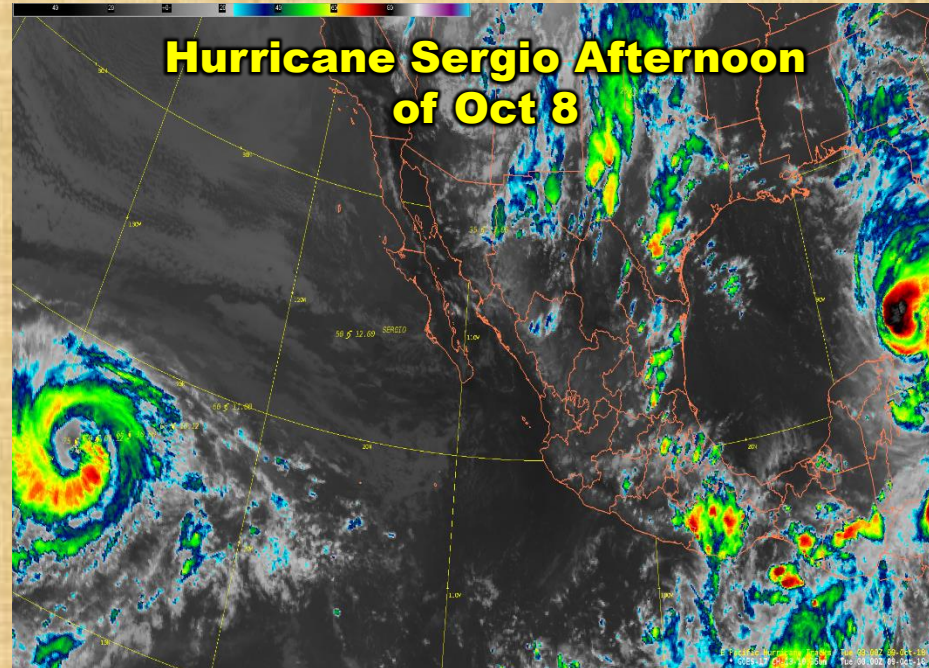
**Hurricane Sergio Afternoon
of Oct 6**

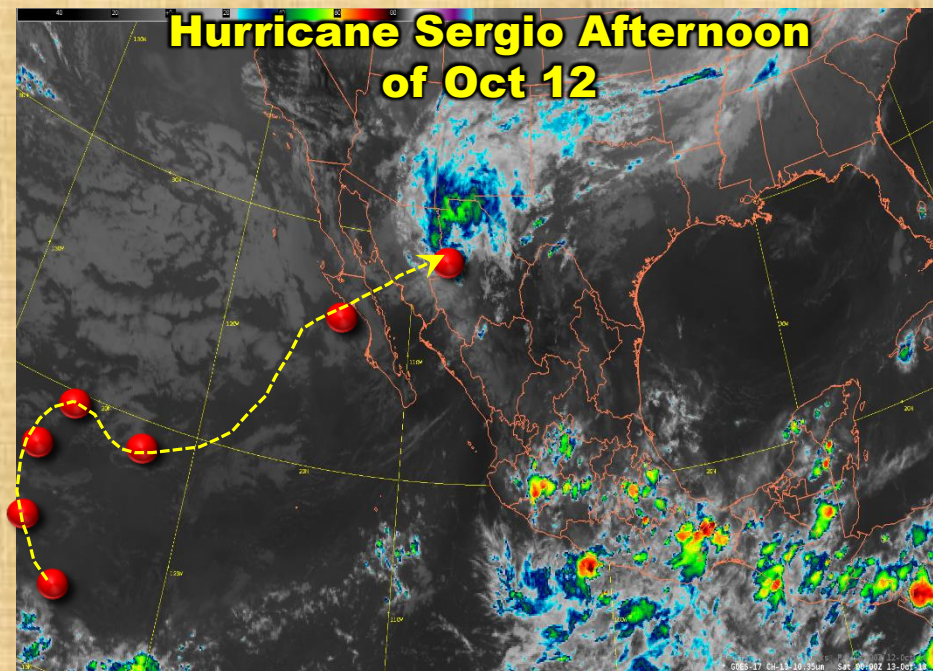
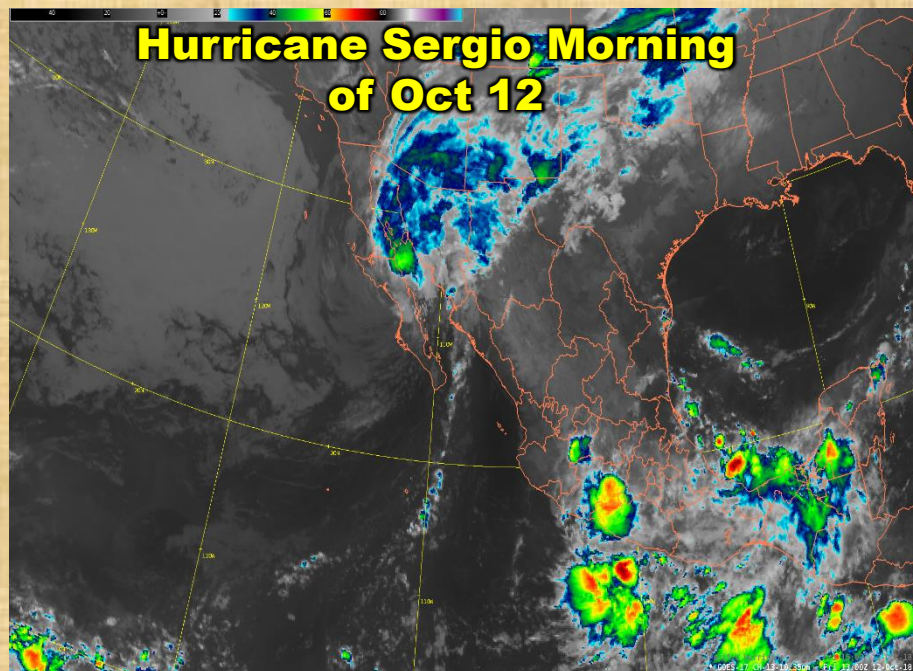
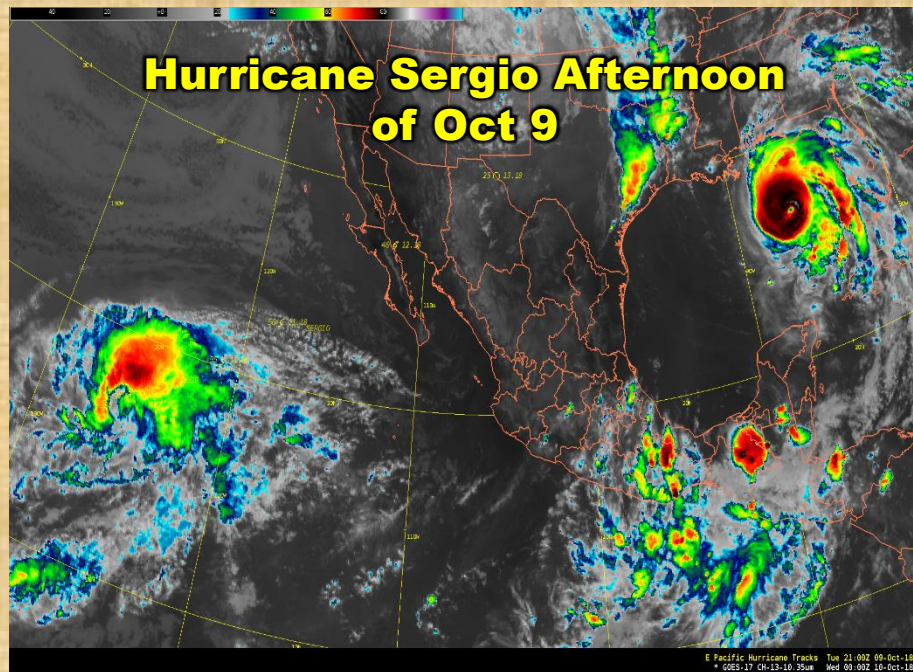


**Hurricane Sergio Afternoon
of Oct 7**



**Hurricane Sergio Afternoon
of Oct 8**





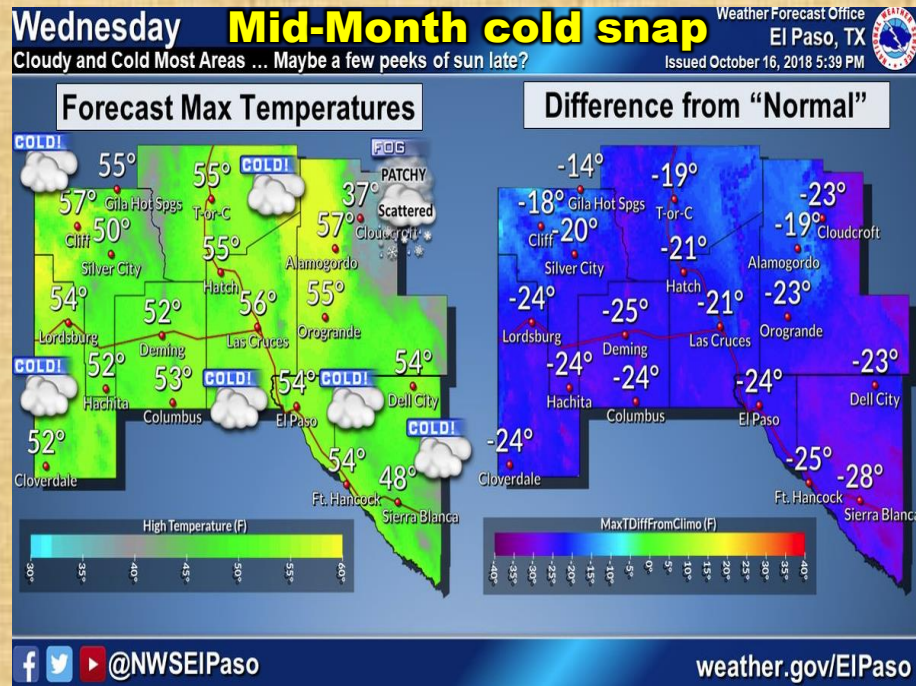
Storm over Otero County Oct 6



Storm over Otero County Oct 6

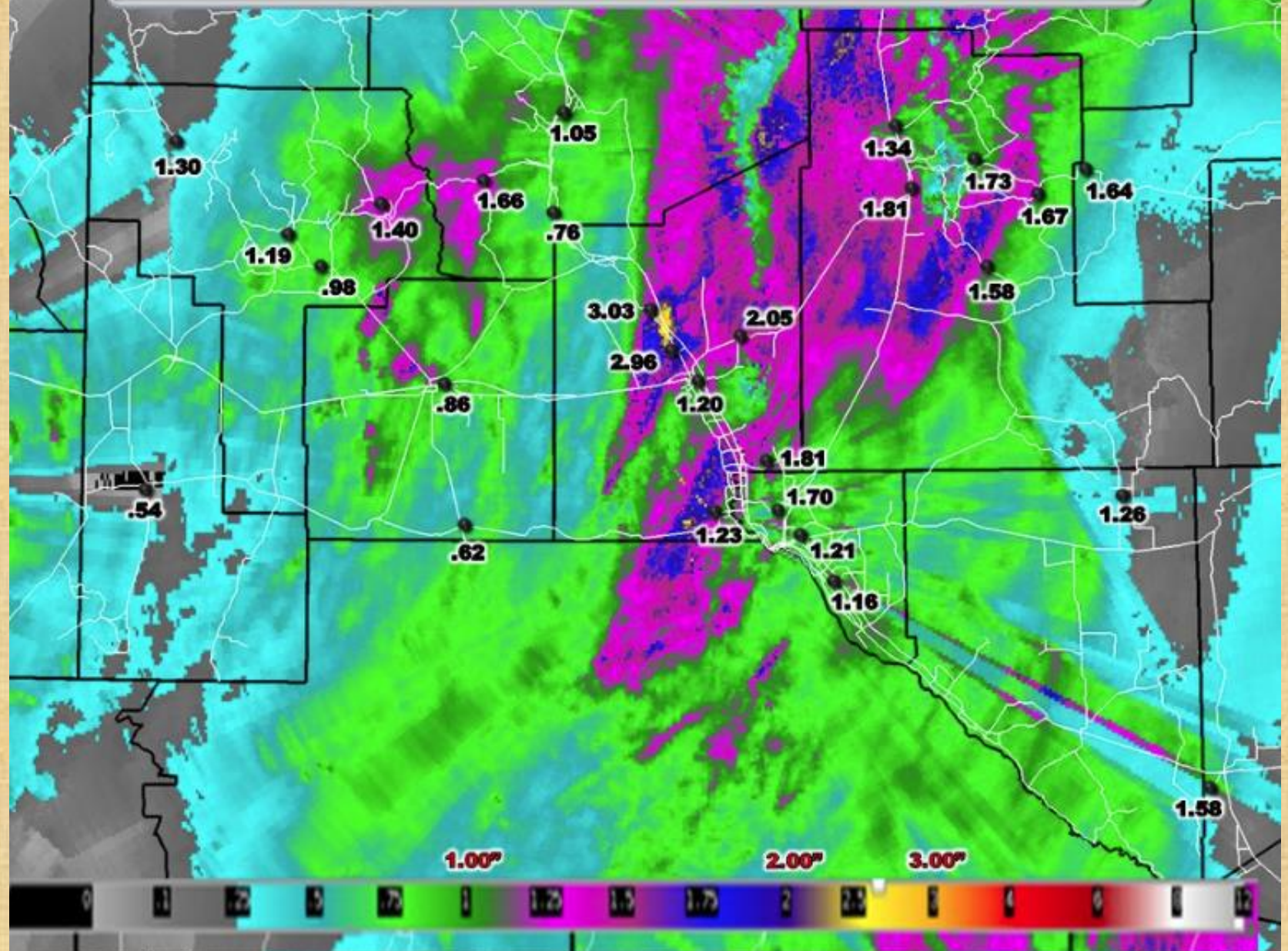


First snow of the season at Ski Apache Oct 8





RAINFALL TOTALS OCT 23-24, 2018



El Niño Watch Is In Effect

ENSO Alert System

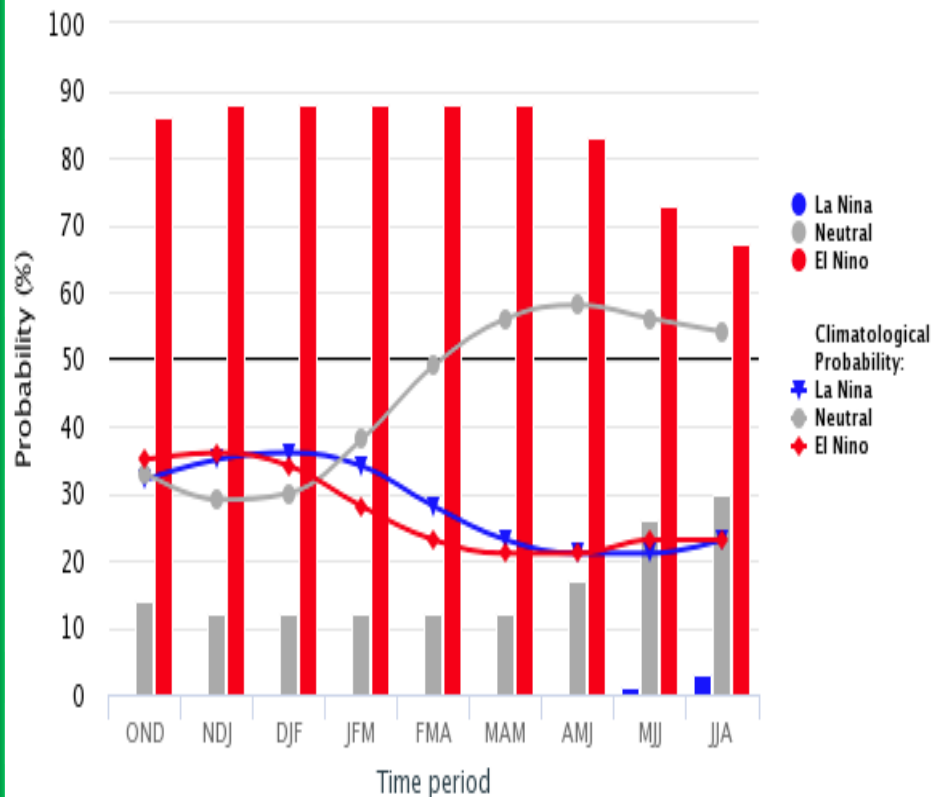
- **El Niño or La Niña Watch:** Issued when conditions are favorable for the development of El Niño or La Niña conditions in the next six months.
- **El Niño or La Niña Advisory:** Issued when El Niño or La Niña conditions are observed and expected to continue.

ENSO Forecast

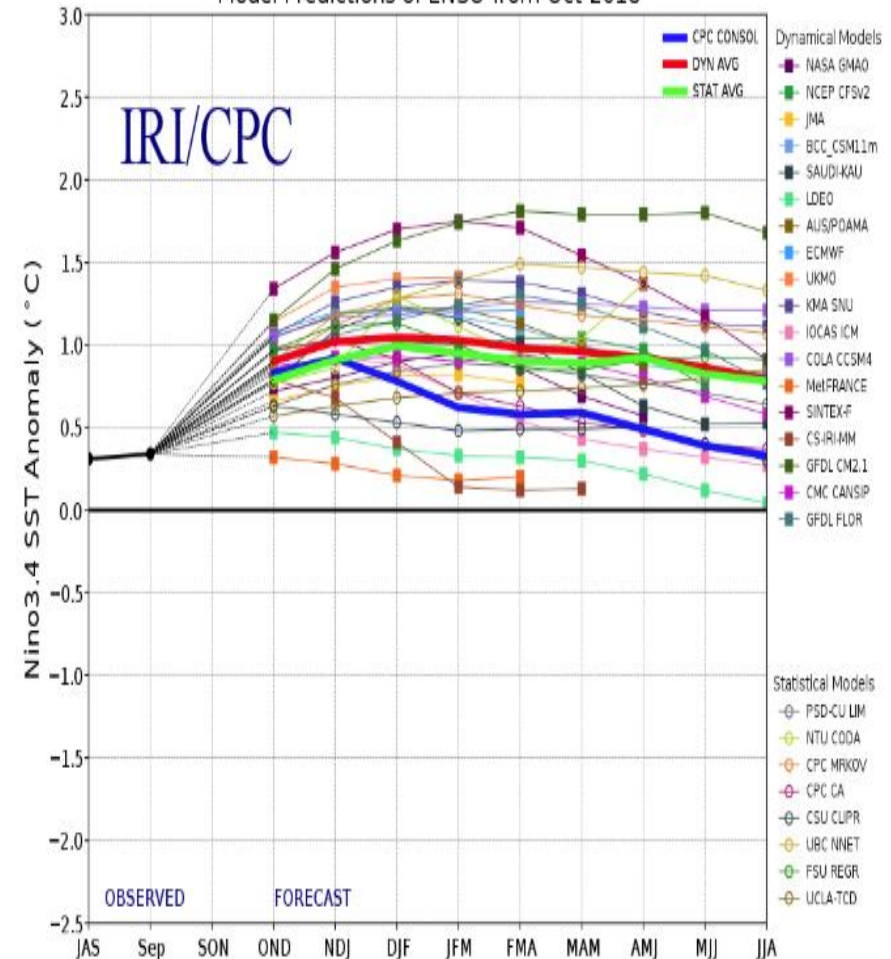
ENSO IS NOW IN NEUTRAL AND WILL LIKELY CHANGE TO EL NIÑO PHASE WITHIN NEXT FEW MONTHS

Mid-Oct IRI/CPC Model-Based Probabilistic ENSO Forecasts

ENSO state based on NINO3.4 SST Anomaly
Neutral ENSO: -0.5°C to 0.5°C



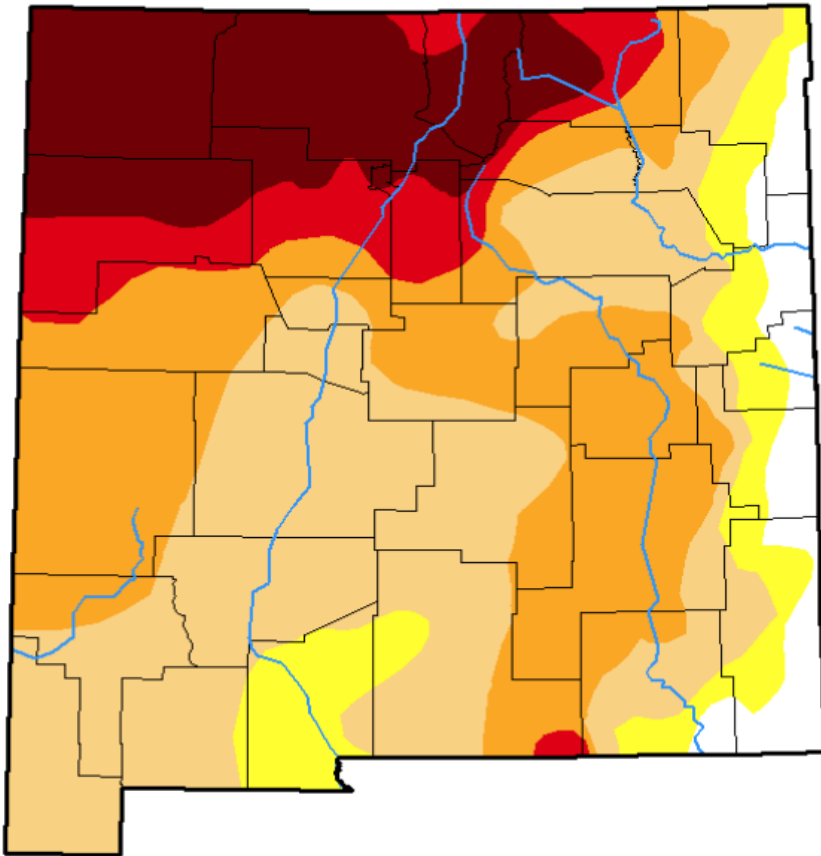
Model Predictions of ENSO from Oct 2018



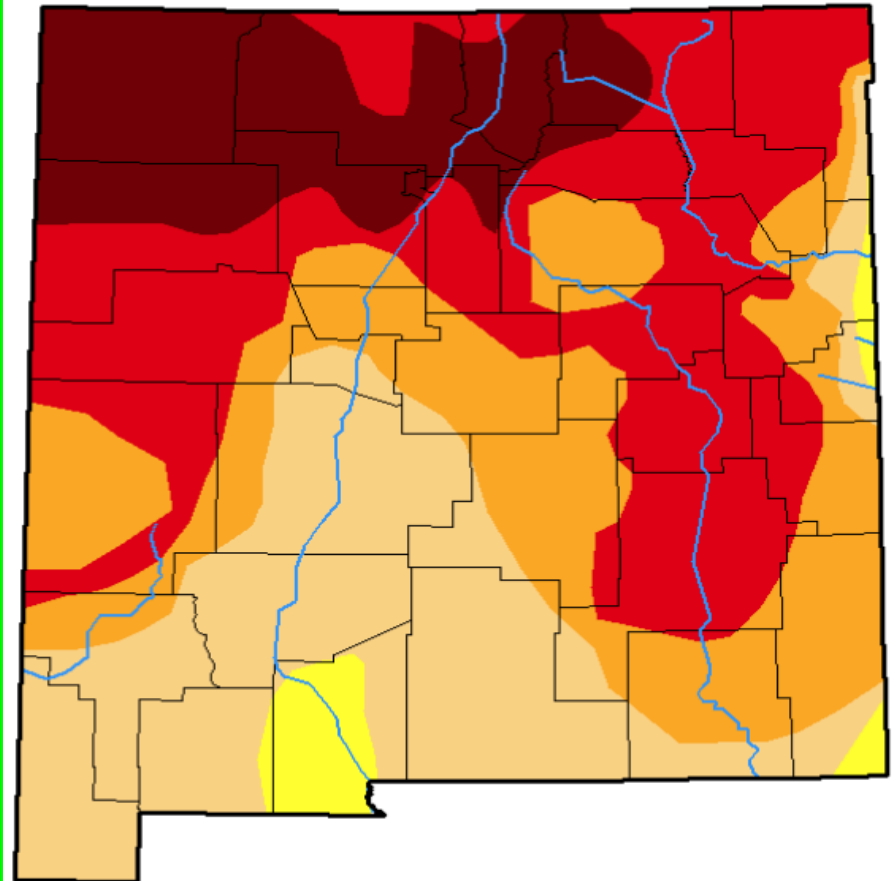
Current drought conditions for New Mexico and 3 month change

- Abnormally Dry – D0
- Moderate Drought – D1
- Severe Drought – D2
- Extreme Drought – D3
- Exceptional – D4

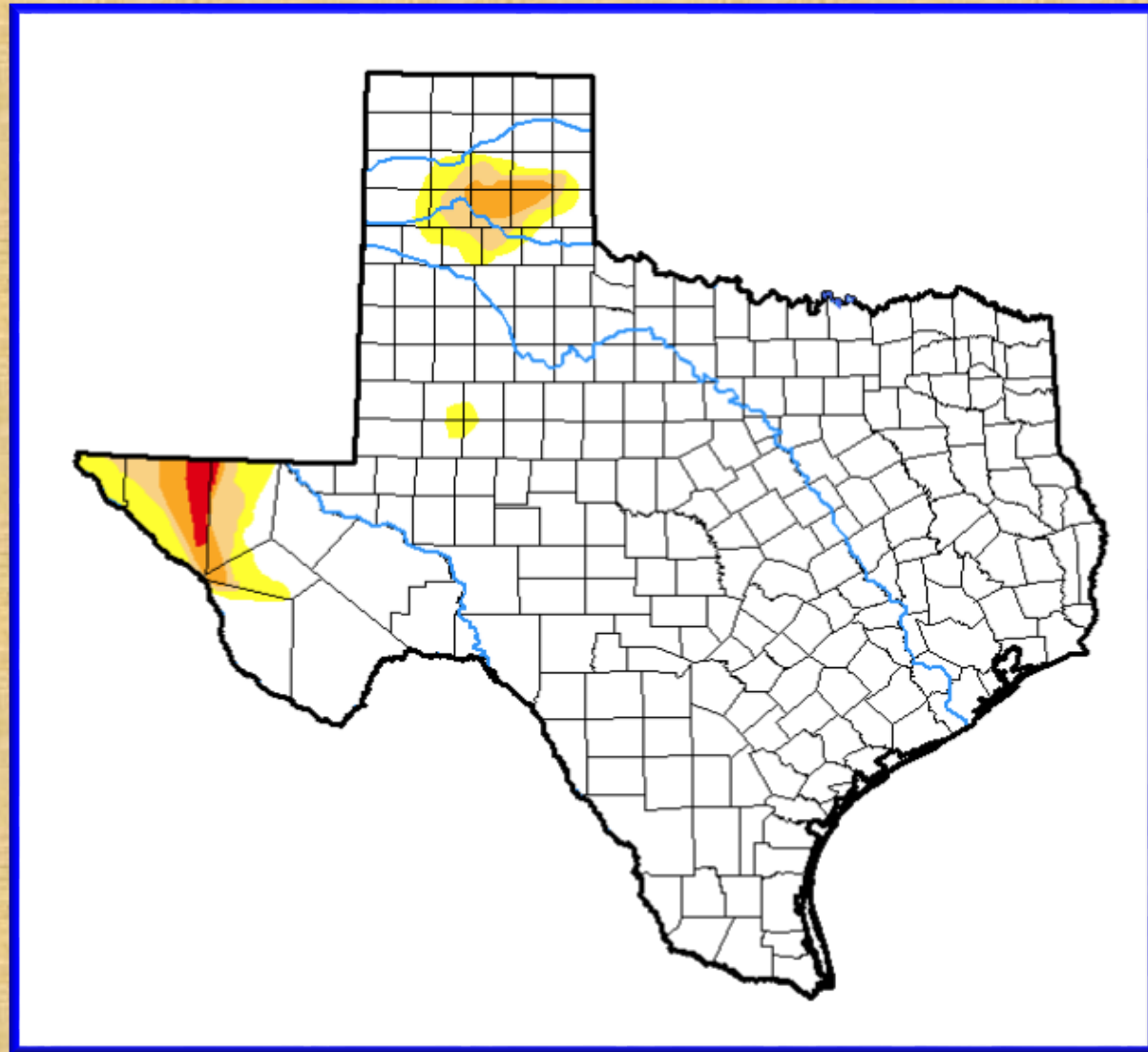
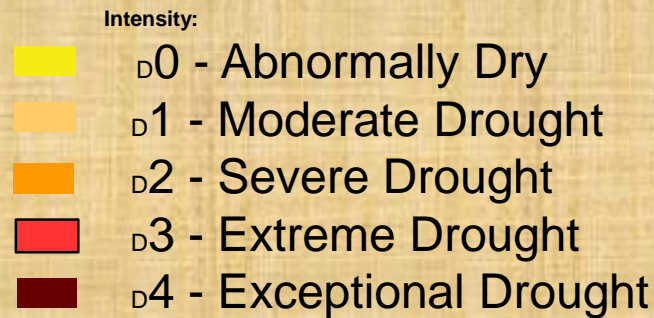
October 23, 2018



July 31, 2018



Current drought conditions for Texas as of October 23, 2018



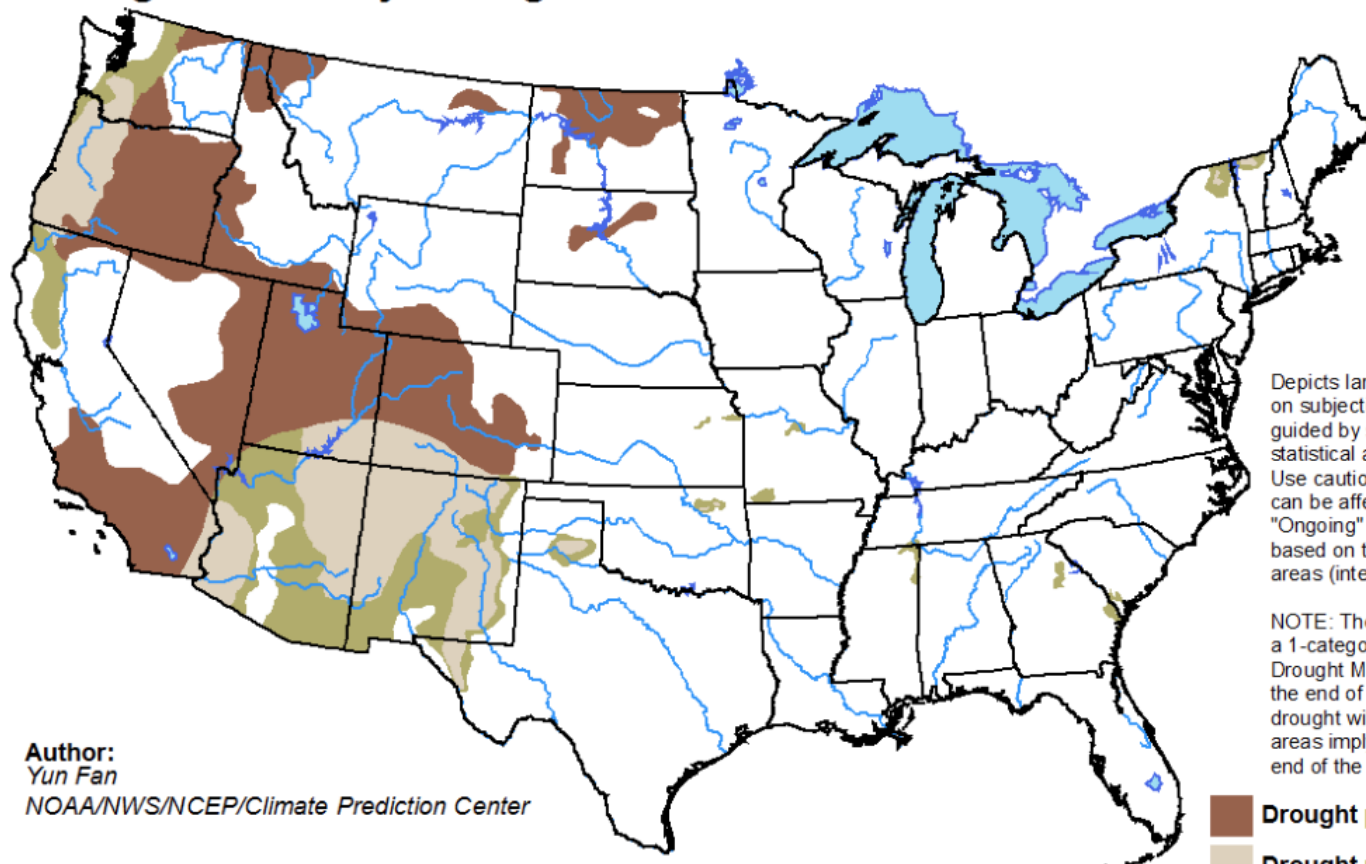
Build your own custom slider maps here at:

<http://droughtmonitor.unl.edu/Maps/ComparisonSlider.aspx>

U.S. Seasonal Drought Outlook

Drought Tendency During the Valid Period





Valid for October 18 - January 31, 2019
Released October 18, 2018

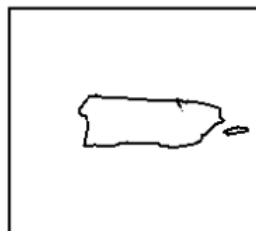
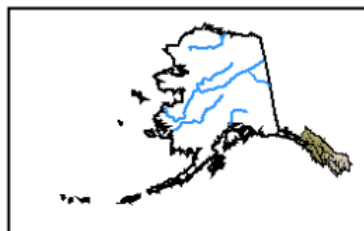


Author:
Yun Fan
NOAA/NWS/NCEP/Climate Prediction Center

Depicts large-scale trends based on subjectively derived probabilities guided by short- and long-range statistical and dynamical forecasts. Use caution for applications that can be affected by short lived events. "Ongoing" drought areas are based on the U.S. Drought Monitor areas (intensities of D1 to D4).

NOTE: The tan areas imply at least a 1-category improvement in the Drought Monitor intensity levels by the end of the period, although drought will remain. The green areas imply drought removal by the end of the period (D0 or none).

-  Drought persists
-  Drought remains but improves
-  Drought removal likely
-  Drought development likely

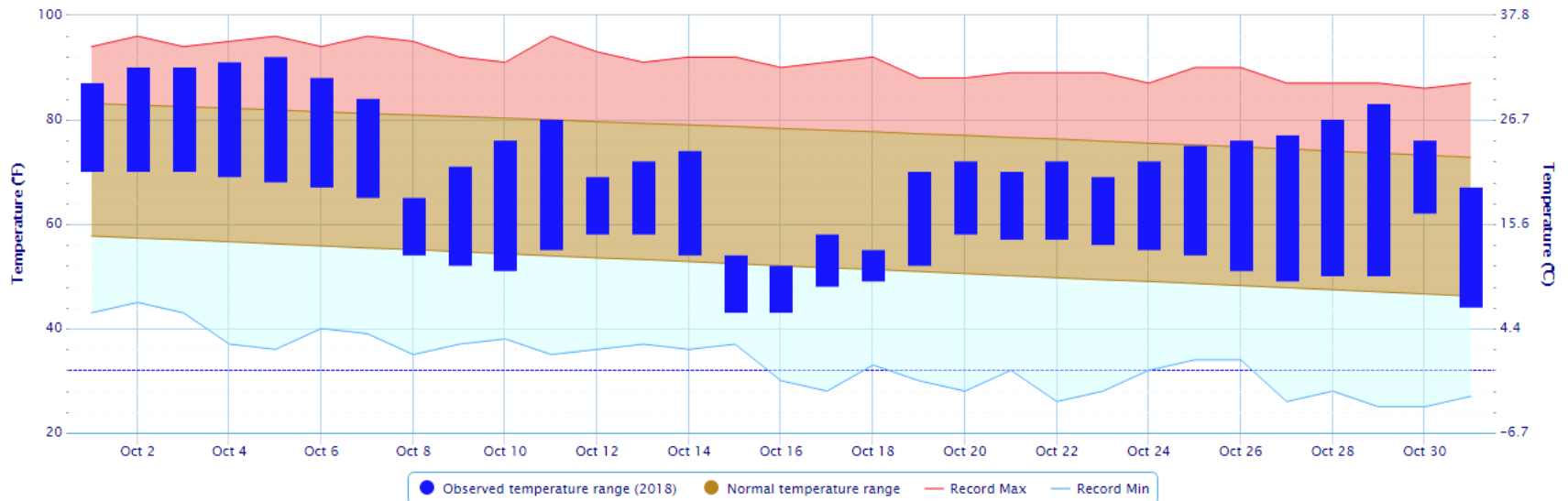


<http://go.usa.gov/3eZ73>

Temperature and precipitation data for October 2018

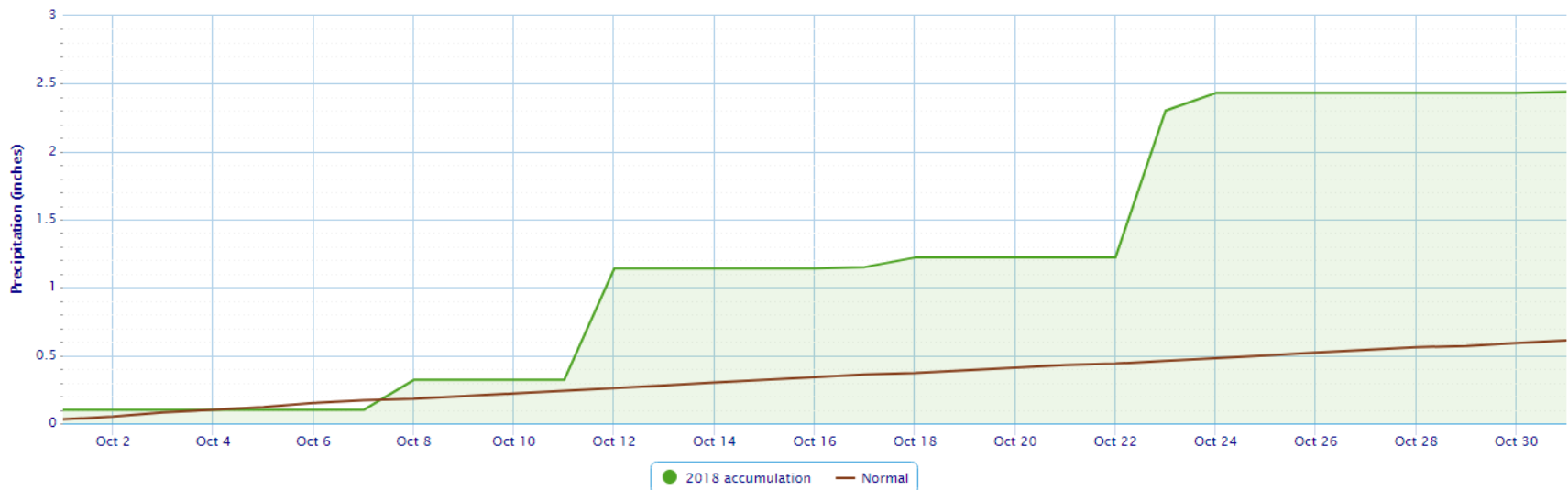
Daily Temperature Data – El Paso Area, TX (ThreadEx)

Period of Record – Max temperature: 1887-01-01 to 2018-10-31; Min temperature: 1879-01-01 to 2018-10-31. Normals period: 1981-2010. Click and drag to zoom chart.



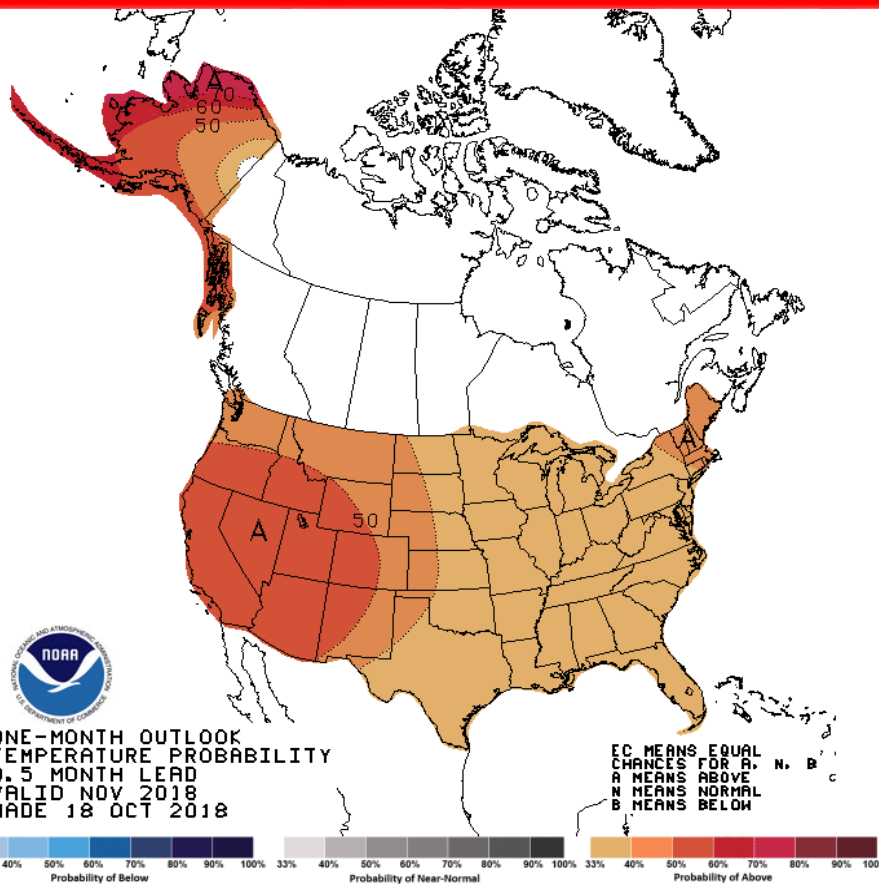
Accumulated Precipitation – El Paso Area, TX (ThreadEx)

Click and drag to zoom to a shorter time interval; green/black diamonds represent subsequent/missing values

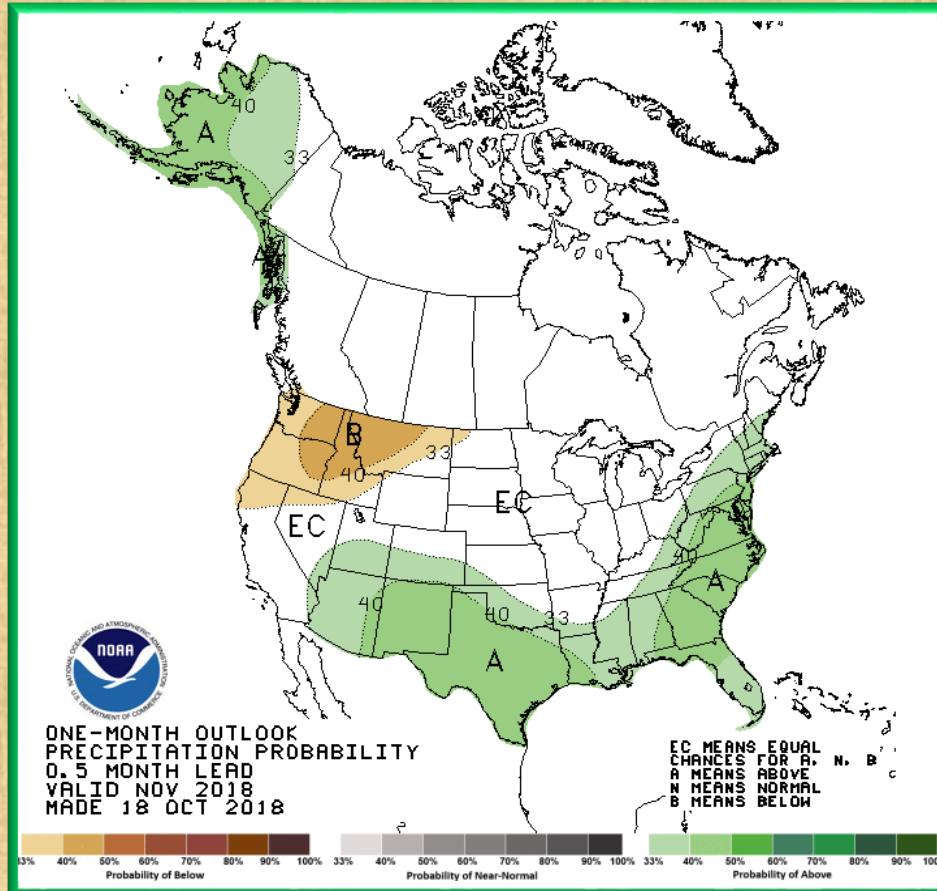


Temperature and precipitation outlook for November 2018

Temperature

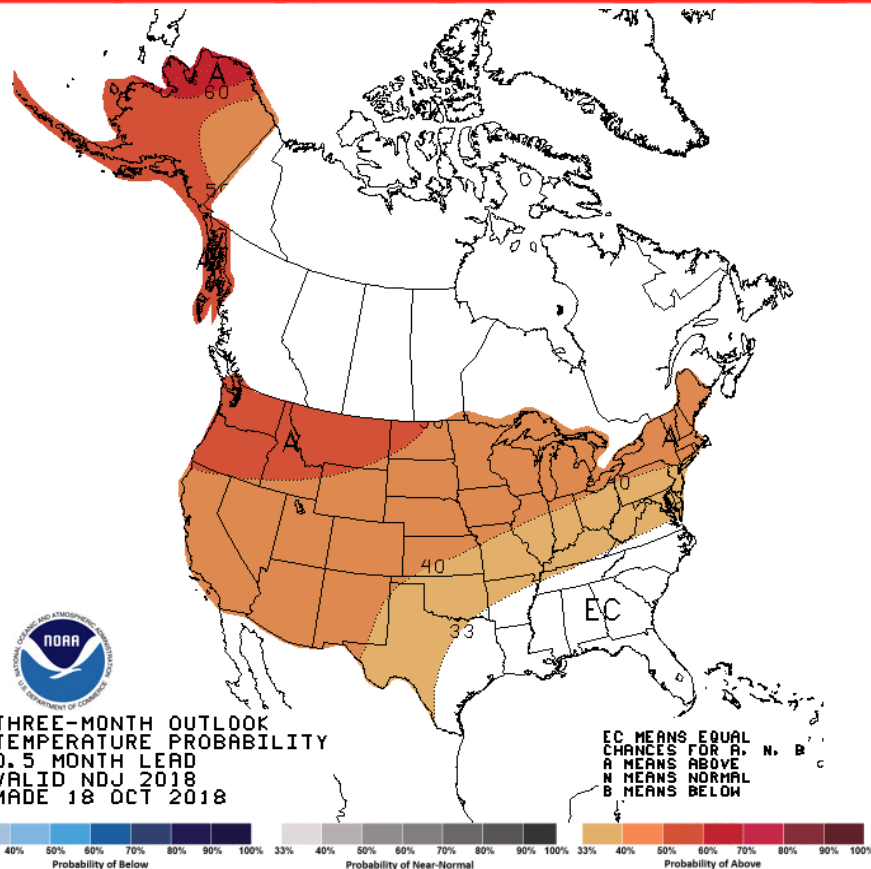


Precipitation

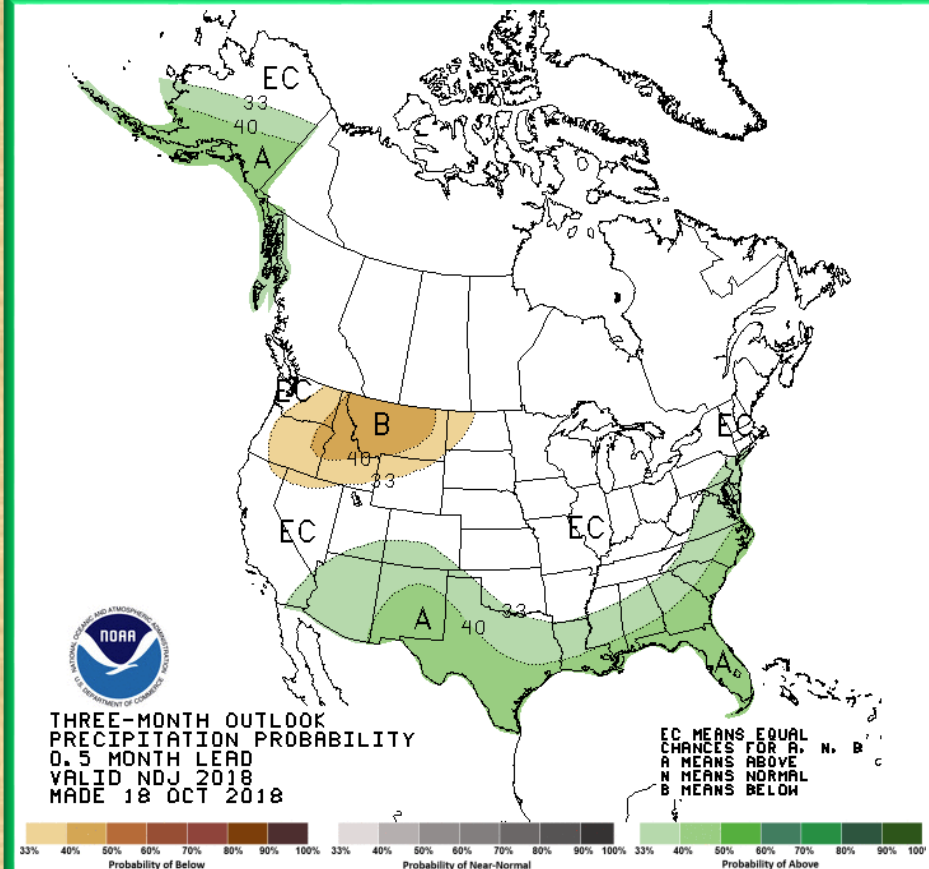


Temperature and precipitation outlook For Nov-Jan 2018-2019

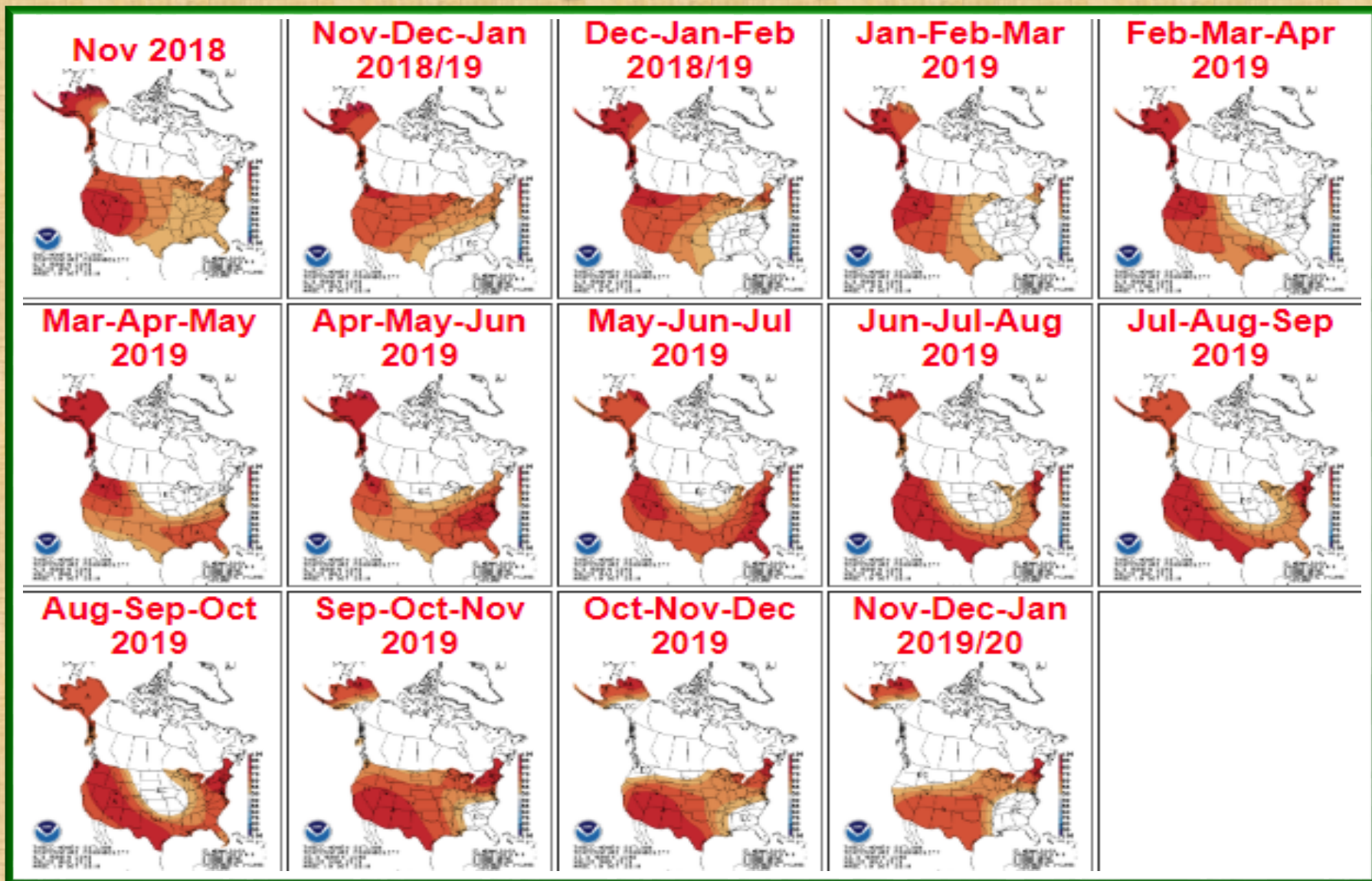
Temperature



Precipitation

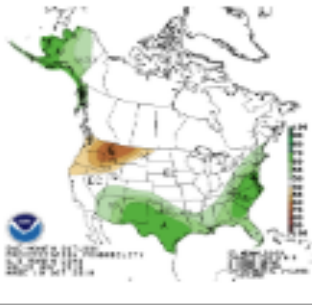


Temperature Outlook Through January 2020

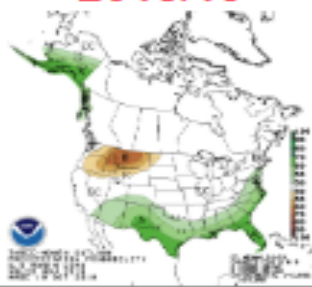


Precipitation Outlook Through January 2020

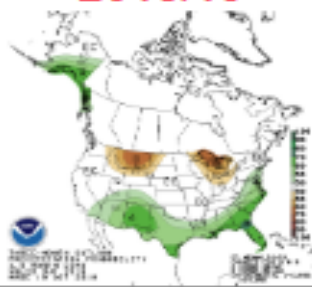
Nov 2018



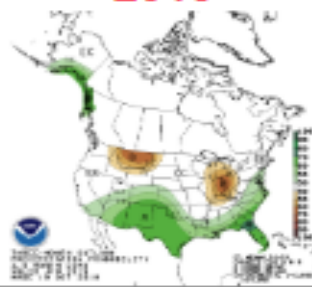
**Nov-Dec-Jan
2018/19**



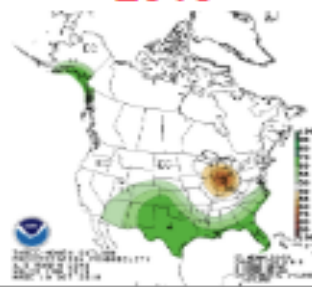
**Dec-Jan-Feb
2018/19**



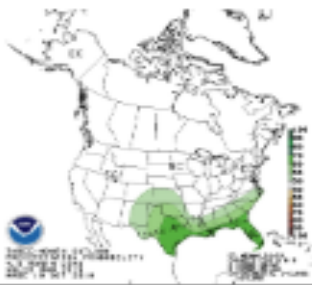
**Jan-Feb-Mar
2019**



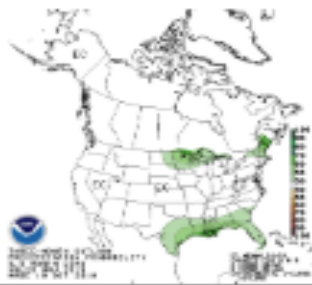
**Feb-Mar-Apr
2019**



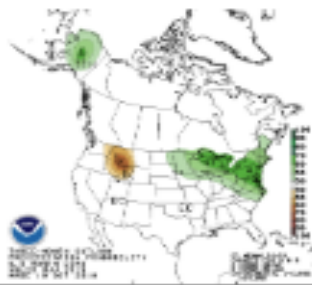
**Mar-Apr-May
2019**



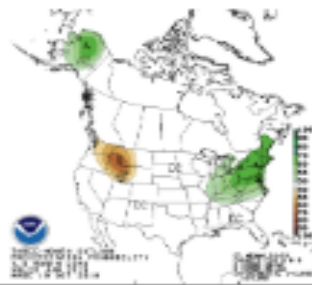
**Apr-May-Jun
2019**



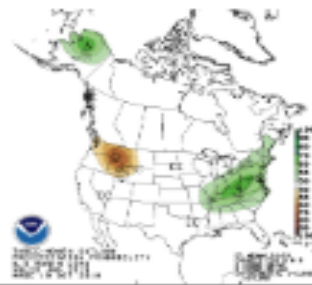
**May-Jun-Jul
2019**



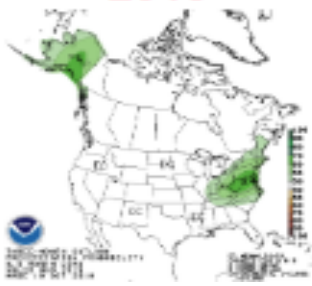
**Jun-Jul-Aug
2019**



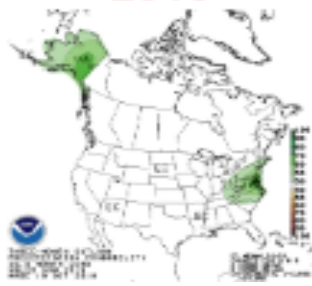
**Jul-Aug-Sep
2019**



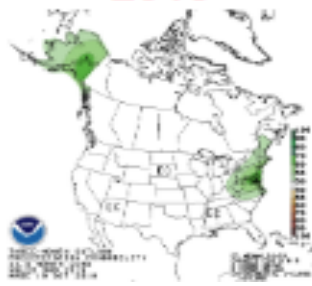
**Aug-Sep-Oct
2019**



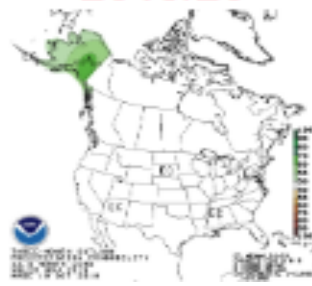
**Sep-Oct-Nov
2019**



**Oct-Nov-Dec
2019**

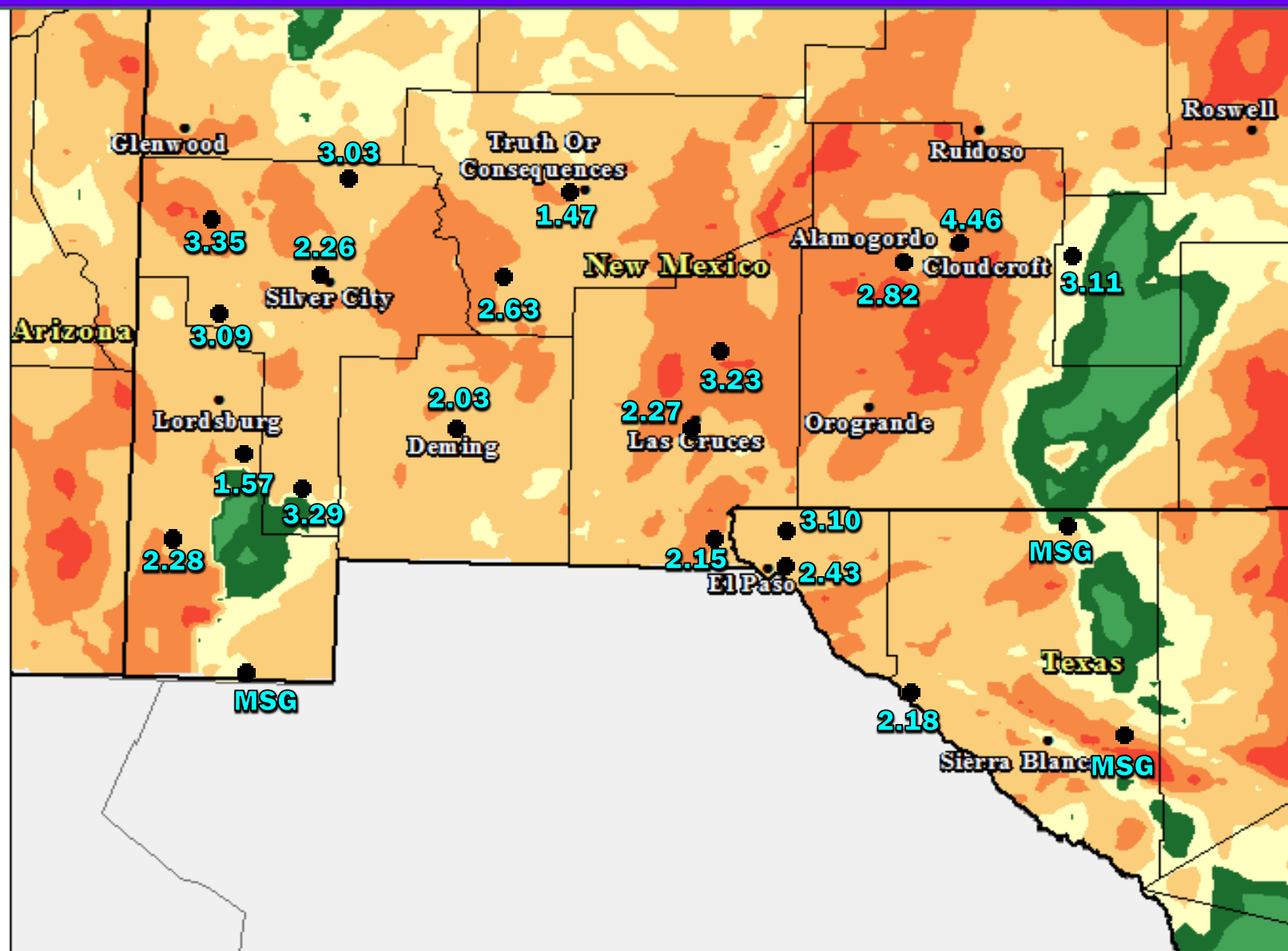
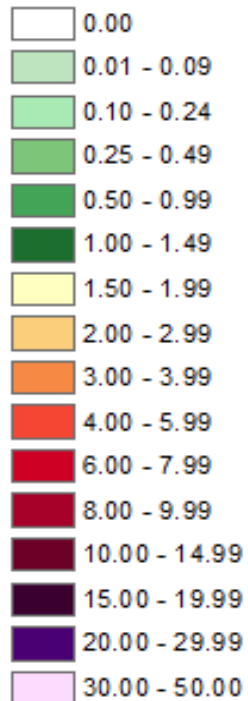


**Nov-Dec-Jan
2019/20**



October 2018 radar rainfall estimate with surface rainfall reports

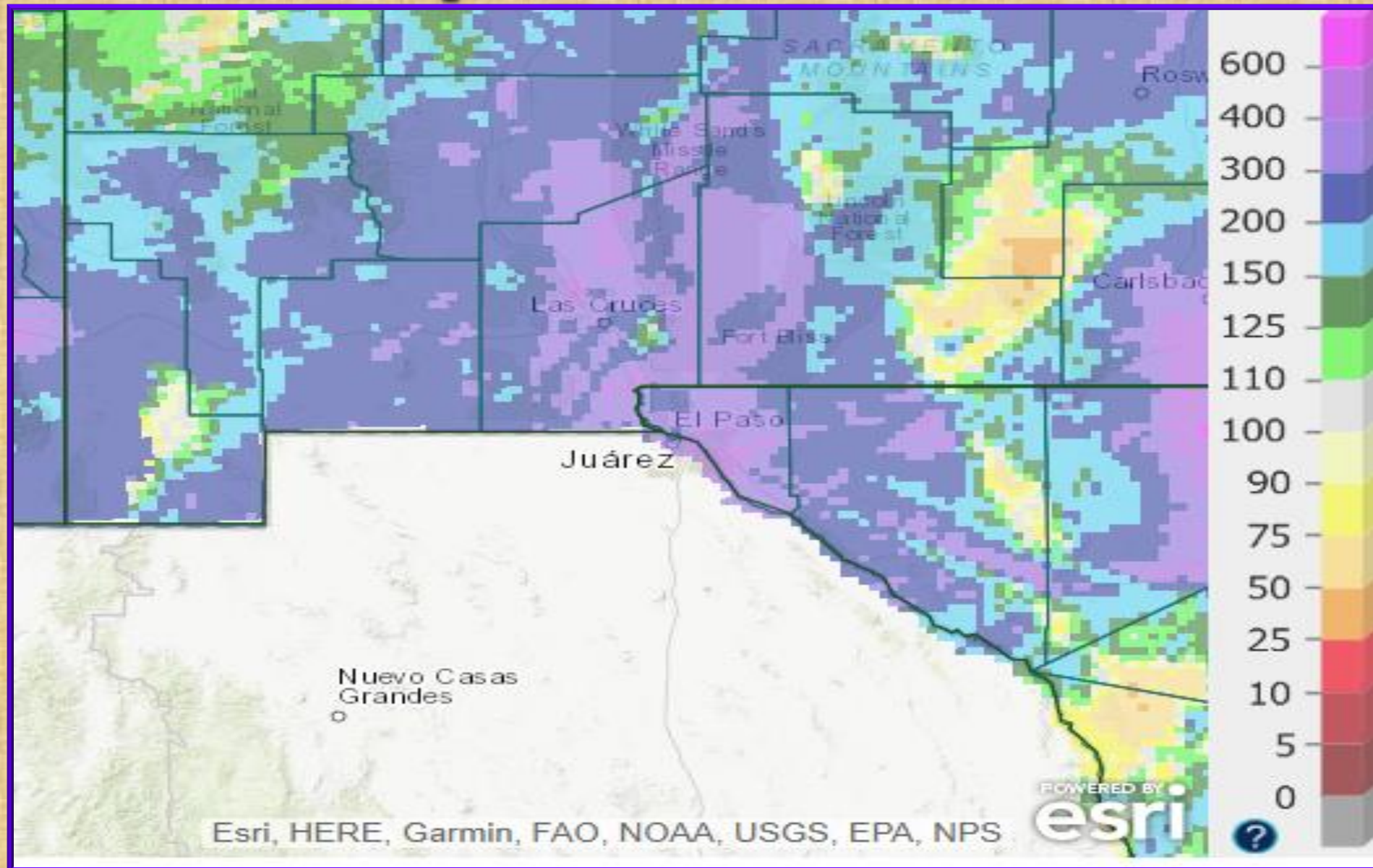
Inches



Created by the
NWS Forecast Office
El Paso, TX



October 2018 radar rainfall estimate percent of normal

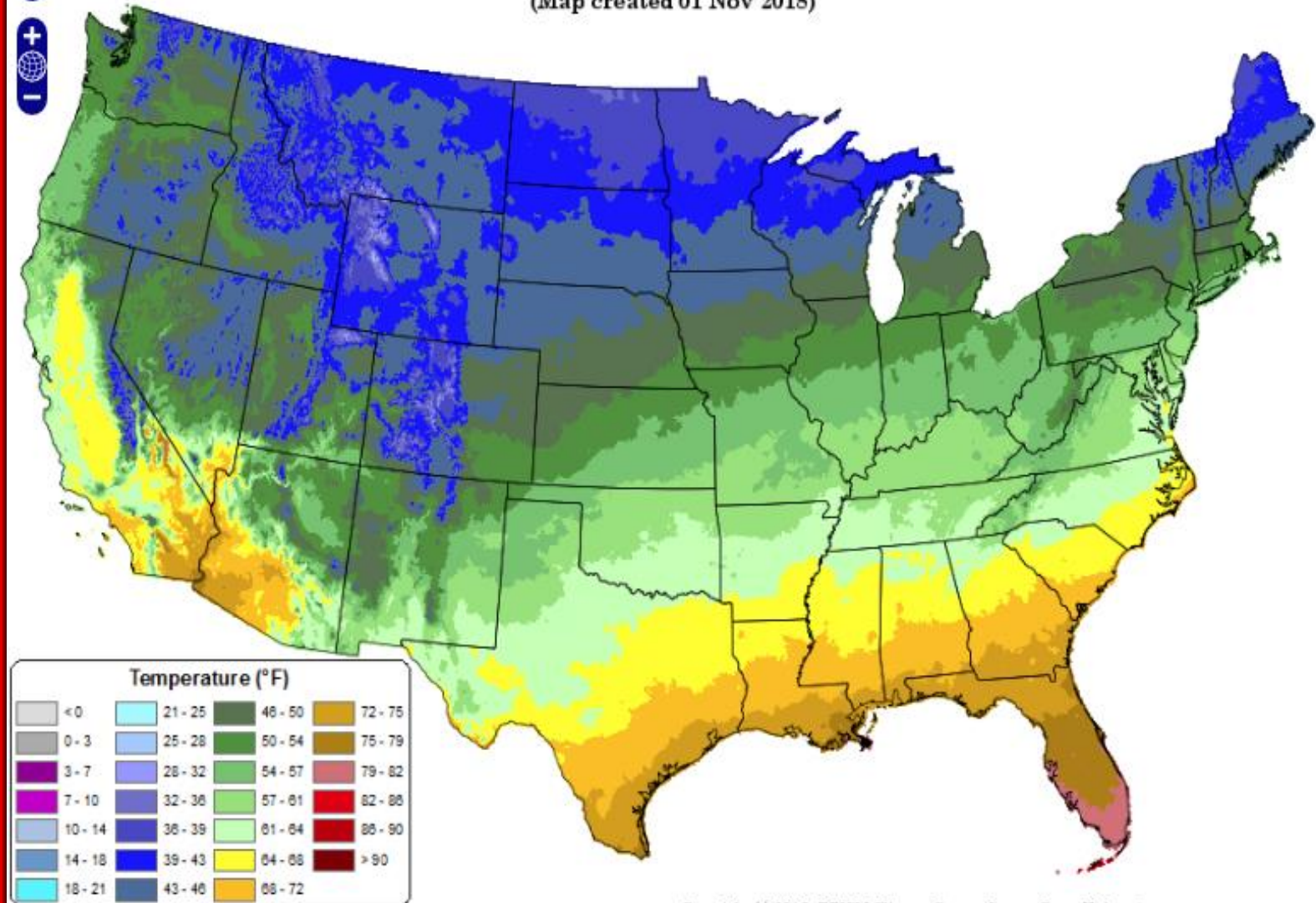


Average Daily Mean Temperature for October 2018

Average Daily Mean Temperature: 01 Oct 2018 - 31 Oct 2018

Period ending 7 AM EST 31 Oct 2018

(Map created 01 Nov 2018)

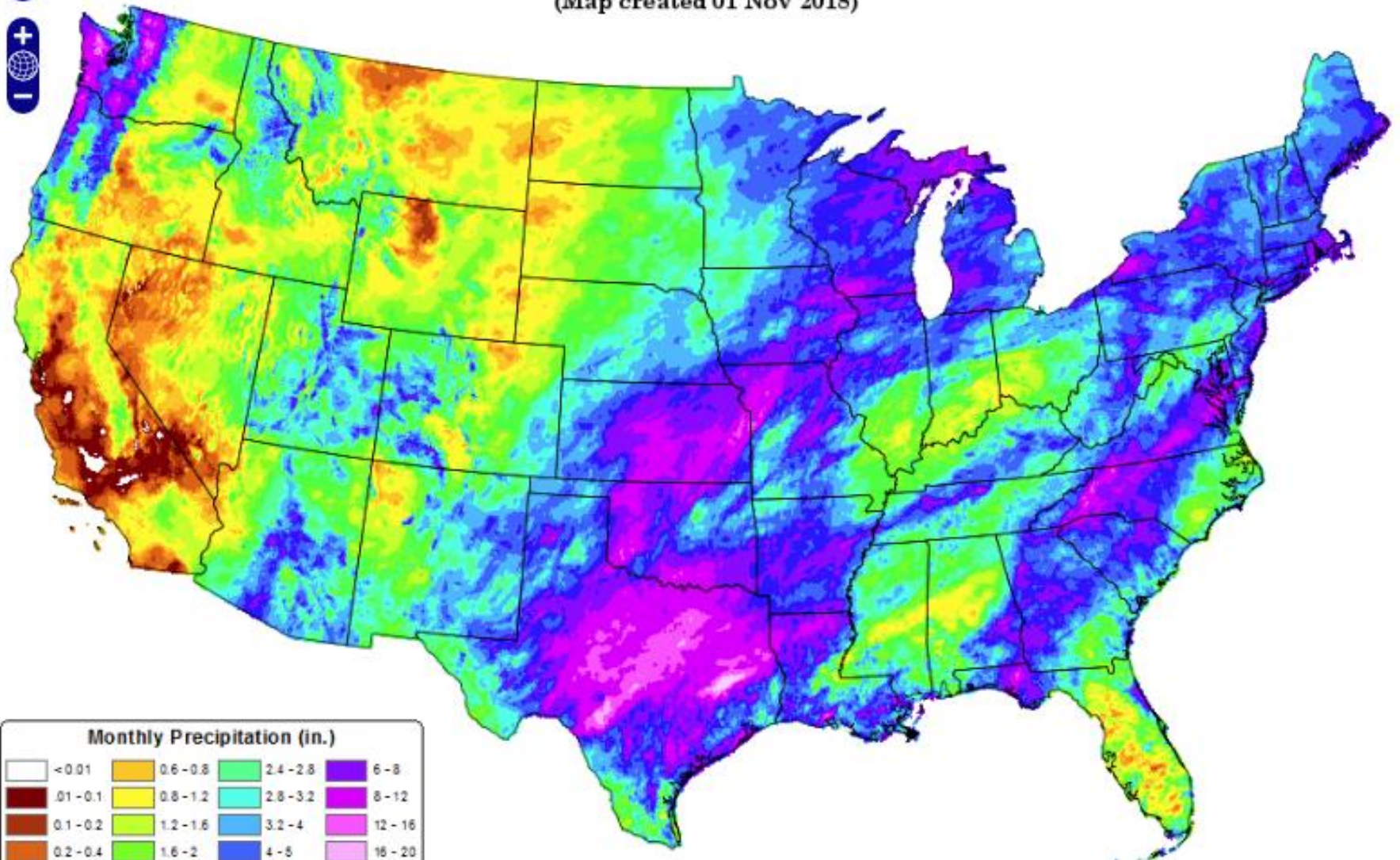


Total Precipitation for October 2018

Total Precipitation: 01 Oct 2018 - 31 Oct 2018

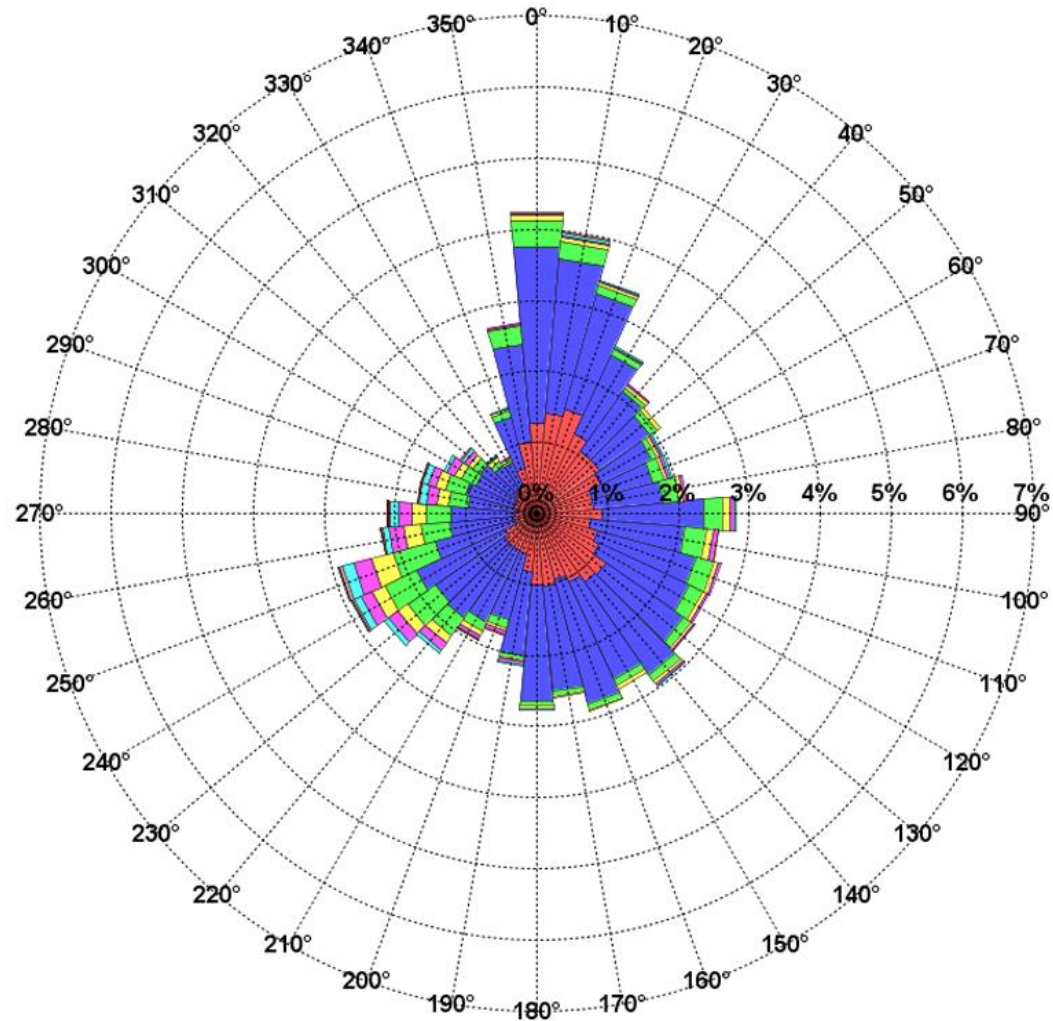
Period ending 7 AM EST 31 Oct 2018

(Map created 01 Nov 2018)



<http://www.srh.noaa.gov/epz/?n=elpwindrosedata>

Variable: 2.30%



Selected weather reports October 2018

Date/Time	Location (County)	Event
OCT 7 725 PM	EL PASO 3NE-EL PASO	50 MPH WIND GUST
OCT 18 631 PM	WHITE SIGNAL 2SW-GRANT	.25 VISIBILITY DENSE FOG
OCT 24	SEE RAINFALL REPORTS NEXT PAGE	

Selected rainfall reports October 23-24

*****24 HOUR RAINFALL*****

LOCATION	24 HOUR RAINFALL /INCHES/	TIME/DATE OF MEASUREMENT	COMMENTS
NEW MEXICO			
...Dona Ana County...			
2 S Radium Springs	3.03	700 AM 10/24	ELEV 3957 FT COCORAHS
5 WNW Las Cruces	2.96	600 AM 10/24	ELEV 3916 FT COCORAHS
4 WNW Las Cruces	2.91	650 AM 10/24	ELEV 3916 FT COCORAHS
1 SE Las Cruces	2.86	700 AM 10/24	ELEV 3964 FT COCORAHS
7 NW Las Cruces	2.75	400 AM 10/24	ELEV 3938 FT COCORAHS
6 WNW Las Cruces	2.65	700 AM 10/24	ELEV 3953 FT COCORAHS
4 NNW Las Cruces	2.47	700 AM 10/24	ELEV 4157 FT COCORAHS
3 NW Las Cruces	2.41	700 AM 10/24	ELEV 4012 FT COCORAHS
16 NW Las Cruces	2.39	700 AM 10/24	ELEV 3973 FT COCORAHS
5 WSW Las Cruces	2.30	645 AM 10/24	ELEV 3909 FT COCORAHS
4 NNE Las Cruces	2.27	615 AM 10/24	ELEV 4373 FT COCORAHS
2 WSW Las Cruces	2.25	700 AM 10/24	ELEV 3894 FT COCORAHS
6 NNE Las Cruces	2.22	700 AM 10/24	ELEV 4390 FT COCORAHS
2 W Organ	2.21	700 AM 10/24	ELEV 4682 FT COCORAHS
3 W Las Cruces	2.18	700 AM 10/24	ELEV 3914 FT COCORAHS
3 SSE La Mesa	2.15	700 AM 10/24	ELEV 3825 FT COCORAHS
2 ENE Las Cruces	2.12	700 AM 10/24	ELEV 4281 FT COCORAHS
Organ	2.05	800 AM 10/24	ELEV 5094 FT COCORAHS
8 WSW Las Cruces	2.05	700 AM 10/24	ELEV 4187 FT COCORAHS
3 NNE Las Cruces	2.01	700 AM 10/24	ELEV 4304 FT COCORAHS
1 W Las Cruces	1.90	715 AM 10/24	ELEV 3990 FT COCORAHS
2 WNW Las Cruces	1.89	700 AM 10/24	ELEV 3983 FT COCORAHS
2 NNE Las Cruces	1.82	700 AM 10/24	ELEV 4020 FT COCORAHS
Chaparral	1.81	700 AM 10/24	ELEV 4035 FT COCORAHS
6 ESE Las Cruces	1.78	700 AM 10/24	ELEV 4524 FT COCORAHS
5 SSE Las Cruces	1.77	700 AM 10/24	ELEV 4016 FT COCORAHS
6 SSE Las Cruces	1.72	700 AM 10/24	ELEV 4031 FT COCORAHS
2 N Las Cruces	1.72	800 AM 10/24	ELEV 4258 FT COCORAHS
2 NNW Las Cruces	1.71	700 AM 10/24	ELEV 4206 FT COCORAHS
1 NE Las Cruces	1.69	700 AM 10/24	ELEV 4218 FT COCORAHS
2 NE Las Cruces	1.68	700 AM 10/24	ELEV 4278 FT COCORAHS
7 ESE Las Cruces	1.64	700 AM 10/24	ELEV 4576 FT COCORAHS
4 SSE Las Cruces	1.61	700 AM 10/24	ELEV 4081 FT COCORAHS
2 SW Las Cruces	1.53	700 AM 10/24	ELEV 3892 FT COCORAHS
4 SW Las Cruces	1.49	640 AM 10/24	ELEV 3890 FT COCORAHS
1 S Las Cruces	1.46	700 AM 10/24	ELEV 4052 FT COCORAHS
3 S Las Cruces	1.39	622 AM 10/24	ELEV 3989 FT COCORAHS
5 S Las Cruces	1.39	700 AM 10/24	ELEV 3891 FT COCORAHS
1 ESE Las Cruces	1.35	800 AM 10/24	ELEV 4261 FT COCORAHS
4 SSW Las Cruces	1.35	700 AM 10/24	ELEV 3878 FT COCORAHS
8 SSW Anthony	1.34	700 AM 10/24	ELEV 3757 FT COCORAHS
5 NW Santa Teresa	1.31	700 AM 10/24	ELEV 3829 FT COCORAHS
1 SSE Santa Teresa	1.31	700 AM 10/24	ELEV 3810 FT COCORAHS

...Luna County...

1 SSW Deming	1.36	600 AM 10/24	ELEV 4324 FT COCORAHS
5 S Deming	1.00	700 AM 10/24	ELEV 4291 FT COCORAHS

...Otero County...

Sunspot	2.24	700 AM 10/24	ELEV 9262 FT COCORAHS
3 WNW Mayhill	2.21	700 AM 10/24	ELEV 7262 FT COCORAHS
4 SSE Mayhill	2.12	700 AM 10/24	ELEV 6877 FT COCORAHS
3 N Alamogordo	1.81	700 AM 10/24	ELEV 4486 FT COCORAHS
2 S Cloudcroft	1.73	700 AM 10/24	ELEV 8723 FT COCORAHS
2 SW Cloudcroft	1.58	700 AM 10/24	ELEV 8970 FT COCORAHS
6 ENE La Luz	1.41	715 AM 10/24	ELEV 6106 FT COCORAHS
5 W High Rolls	1.38	700 AM 10/24	ELEV 6601 FT COCORAHS
5 NW Alamogordo	1.36	700 AM 10/24	ELEV 4144 FT COCORAHS
9 N Alamogordo	1.32	700 AM 10/24	ELEV 4528 FT COCORAHS


...Sierra County...

Hillsboro	1.66	700 AM 10/24	ELEV 5266 FT COCORAHS
1 WSW Hillsboro	1.55	700 AM 10/24	ELEV 5297 FT COCORAHS
6 S Caballo	1.27	700 AM 10/24	ELEV 4262 FT COCORAHS
1 ENE Truth or Conse	1.05	800 AM 10/24	ELEV 4362 FT COCORAHS
1 S Las Palomas	1.02	700 AM 10/24	ELEV 4301 FT COCORAHS
1 NE Elephant Butte	1.01	700 AM 10/24	ELEV 4509 FT COCORAHS

TEXAS

...El Paso County...

1 ENE Anthony	1.76	700 AM 10/24	ELEV 3966 FT COCORAHS
6 N El Paso	1.70	700 AM 10/24	ELEV 4127 FT COCORAHS
11 ENE El Paso	1.62	640 AM 10/24	ELEV 4007 FT COCORAHS
9 WNW El Paso	1.60	700 AM 10/24	ELEV 3839 FT COCORAHS
5 NW El Paso	1.47	800 AM 10/24	ELEV 4811 FT COCORAHS
9 ESE El Paso	1.44	600 AM 10/24	ELEV 3995 FT COCORAHS
6 SE El Paso	1.42	700 AM 10/24	ELEV 3953 FT COCORAHS
6 SW El Paso	1.41	700 AM 10/24	ELEV 4084 FT COCORAHS
5 N El Paso	1.35	700 AM 10/24	ELEV 3995 FT COCORAHS
8 SE El Paso	1.33	700 AM 10/24	ELEV 3967 FT COCORAHS
3 SSW El Paso	1.32	545 AM 10/24	ELEV 3972 FT COCORAHS
1 W Canutillo	1.32	700 AM 10/24	ELEV 3772 FT COCORAHS
11 WNW El Paso	1.31	700 AM 10/24	ELEV 3767 FT COCORAHS
5 NNE El Paso	1.29	600 AM 10/24	ELEV 3926 FT COCORAHS
3 SW El Paso	1.26	800 AM 10/24	ELEV 4783 FT COCORAHS



NATIONAL WEATHER SERVICE

NATIONAL OCEANIC AND ATMOSPHERIC ADMINISTRATION

[HOME](#)
[FORECAST](#)
[PASTWEATHER](#)
[SAFETY](#)
[INFORMATION](#)
[EDUCATION](#)
[NEWS](#)
[SEARCH](#)
[ABOUT](#)

Local forecast by "City, St" or ZIP code

[Location Help](#)

Heavy Rain and Flash Flooding Possible Over Parts of the Eastern United States

Heavy rainfall is expected over portions of the eastern United States through Thursday. Flooding and flash flooding will be possible in some areas. Click the "Read More" link for excessive rainfall forecasts from the Weather Prediction Center. [Read More >](#)

NWS El Paso

[Weather.gov > El Paso, TX](#)

El Paso, TX
Weather Forecast Office


[Current Hazards](#)
[Current Conditions](#)
[Radar](#)
[Forecasts](#)
[Rivers and Lakes](#)
[Climate and Past Weather](#)
[Local Programs](#)

Today

Wednesday

Warmer with a Few Afternoon Storms

Weather Forecast Office
El Paso, TX
September 27, 2016 4:43 PM



Local forecast by "City, St" or ZIP code

[Location Help](#)

Heavy rain expected across the Mid-Atlantic region and central Appalachians.


Heavy rainfall is possible over portions of the eastern United States today, with the highest risk across the Mid-Atlantic and central Appalachians. Click the "Read More" link for excessive rainfall forecasts from the Weather Prediction Center. Afternoon showers and thunderstorms are possible over portions of the Southwest and southern Rockies through Friday. [Read More >](#)

Monthly Weather Digest

[Weather.gov > El Paso, TX > Monthly Weather Digest](#)

El Paso, TX
Weather Forecast Office

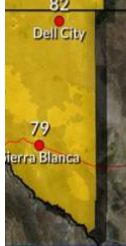
[Current Hazards](#)
[Current Conditions](#)
[Radar](#)
[Forecasts](#)
[Rivers and Lakes](#)
[Climate and Past Weather](#)
[Local Programs](#)



Southern New Mexico and Far West Texas has a variety of weather from month to month. Conditions can range from extreme drought, to heavy flooding rains, from record breaking heat to bone chilling cold. Below you will find past weather highlights from the area that the NWS office in Santa Teresa NM covers. This area includes the following counties in New Mexico: Hudspeth, Grant, Luna, Sierra, Doña Ana and Otero and the following counties in Texas: El Paso and Hudspeth.

WEATHER DIGESTS AND BULLETINS

Weather Digest	Southwest Weather Bulletins
January	2005 Spring Fall
February	2006 Spring Fall
March	2007 Spring Fall
April	2008 Spring Fall
May	2009 Spring Fall
June	2010 Spring Fall
July	2011 Spring Fall
August	2012 Spring Fall
September	2013 Spring Fall
October	2014 Spring Fall
November	
December	



weather.gov/epz

Don't Forget-Current and past issues of our Weather Digest are available on our website at <http://www.weather.gov/epz/>

Just click on "Local Programs>Weather Digest", then choose which month's Digest to view. Also, though discontinued, don't forget to check out our back issues of Southwest Weather Bulletin.

NWS DOPPLER RADAR WATCHING THE MONSOON SKIES OVER EL PASO 24/7

