

May 2026 Weather Digest



May 2026 Weather Summary

May ended up being a little cooler and wetter than normal. Average temperatures ranged from about zero to 3 degrees above normal. Much of this was due to abnormally warm low temperatures. High temperatures for many sites were actually a bit below normal. At El Paso the high temperature for the month was 97°, while the low temperature for the month was 51°.

May turned out to be above normal for rainfall for much of the area east of the Continental Divide with many sites reporting 120 to 200 percent of normal rainfall. Exceptions to this were much of El Paso and Hudspeth Counties which saw below normal rainfall. Also areas west of the Continental Divide continued with their below normal rainfall which exacerbates their longer term drought, as much of the area is still well below normal for the water year, which began in October. Major weather events for the month included a Pacific storm system moving through on May 1-2 with moderate rainfall reported across much of the area.

May 2026 Weather Summary

Toward the end of the month, a dry-line moved in on May 25, kicking off scattered thunderstorms.

Looking ahead to June, daylight and temperatures continue to climb, although at a much slower rate, as we approach the Summer Solstice on June 21. The average high temperature at El Paso on June 1 is 95°, warming to 97° on June 30. Length of daylight on the 1st is 14 hrs, 5 min, increasing to 14 hrs, 13 mins on the Summer Solstice, and beginning to decrease, totaling 14 hrs, 11 mins on June 30.

Normal rainfall at El Paso for June is .73 of an inch. June begins the uptick in rainfall across all the Borderland as we approach the Monsoon Season. Some Monsoon Seasons start in mid/late June, while others begin the first week or so of July.

May 2026 Weather Summary

June's full moons will occur on the 29th, and is know as the Strawberry Moon. The New Moon occurs on June 14. June will not see any Lunar or Solar eclipses.

May 1 Storm in El Paso



May 1 Storm in El Paso



May 1 Storm near Silver City



May 2 Silver City-Great Day for a Bike Race



May 1 Ski Apache



May 1 Ski Apache



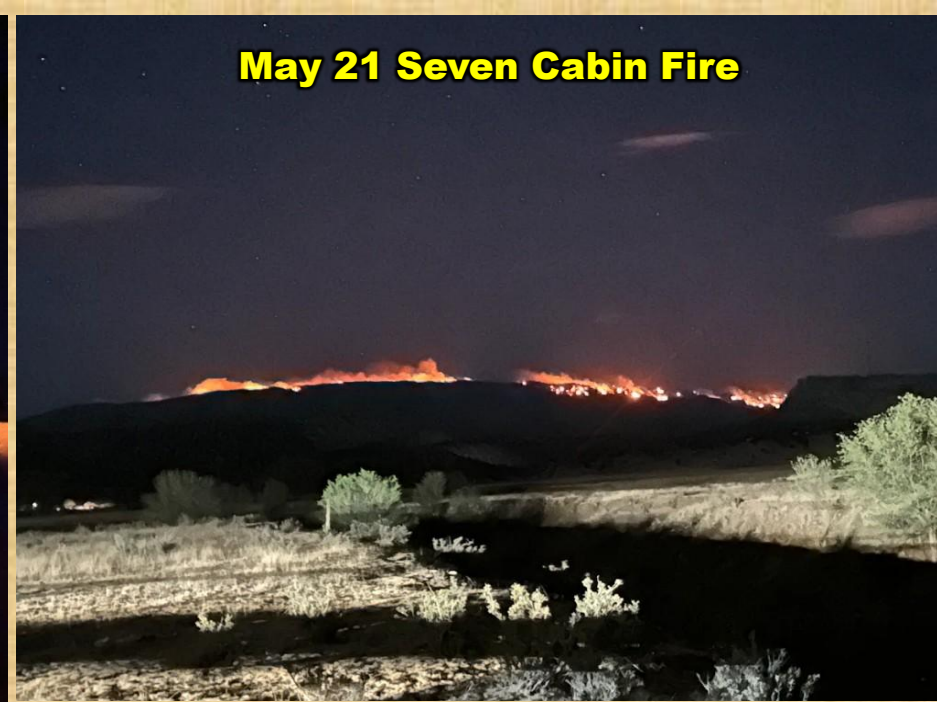
May 1 Timberon



May 16 Wildfire Sunland Park



May 21 Seven Cabin Fire



May 20 Haboob moving into west El Paso



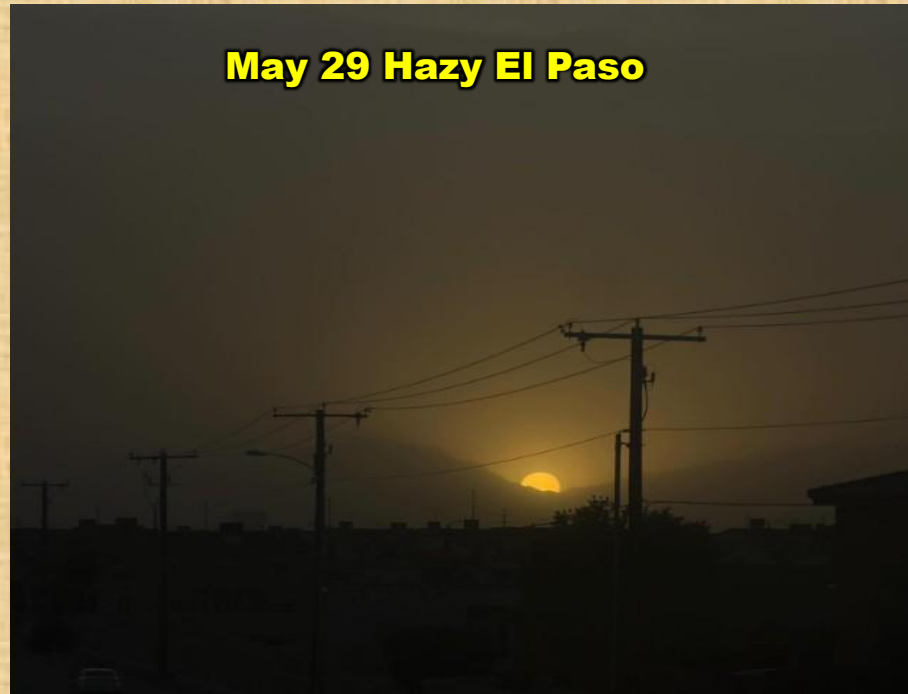
May 20 Haboob Santa Teresa



May 23 Seven Cabin Fire



May 29 Hazy El Paso



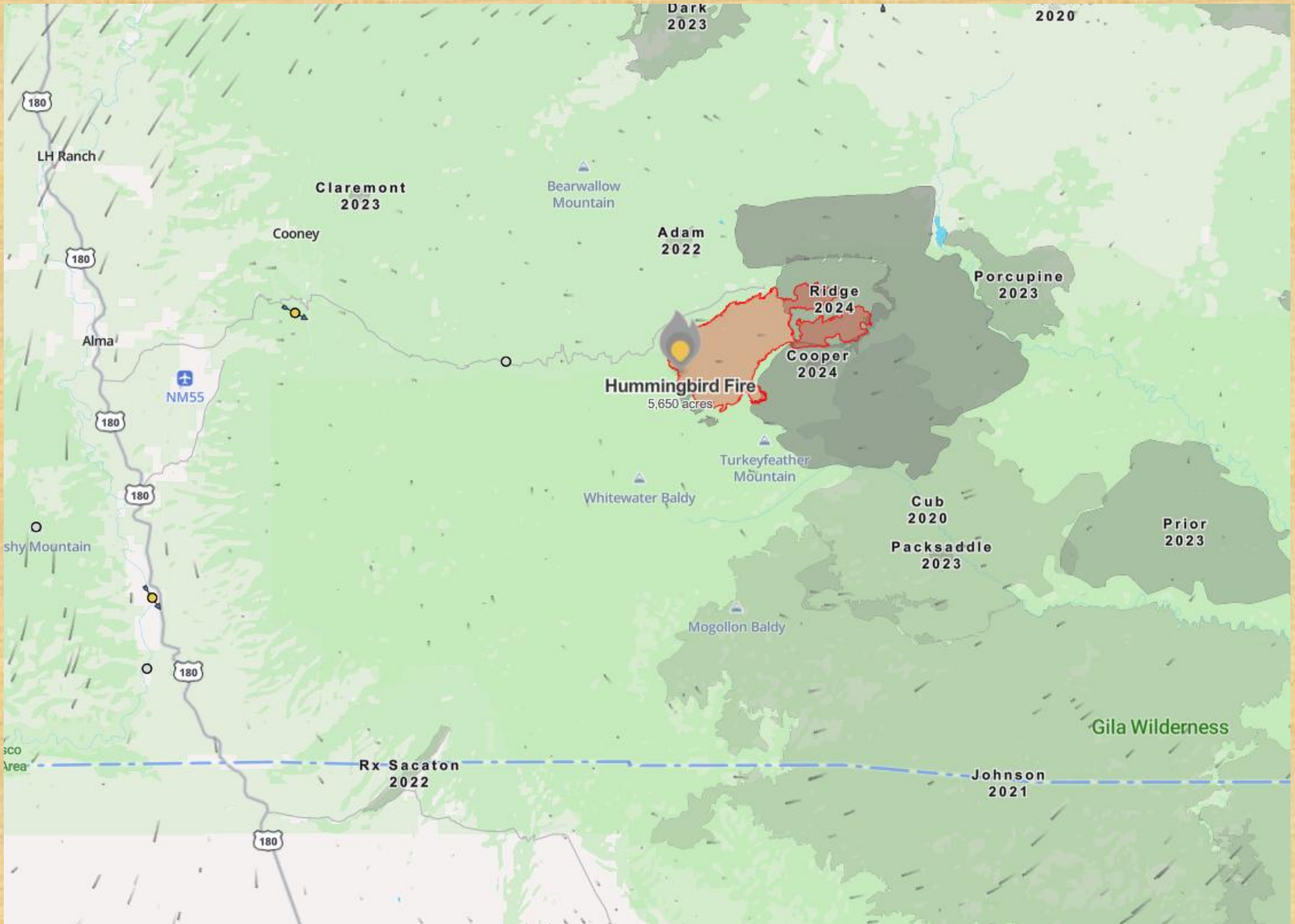
May 25 Lightning at El Paso



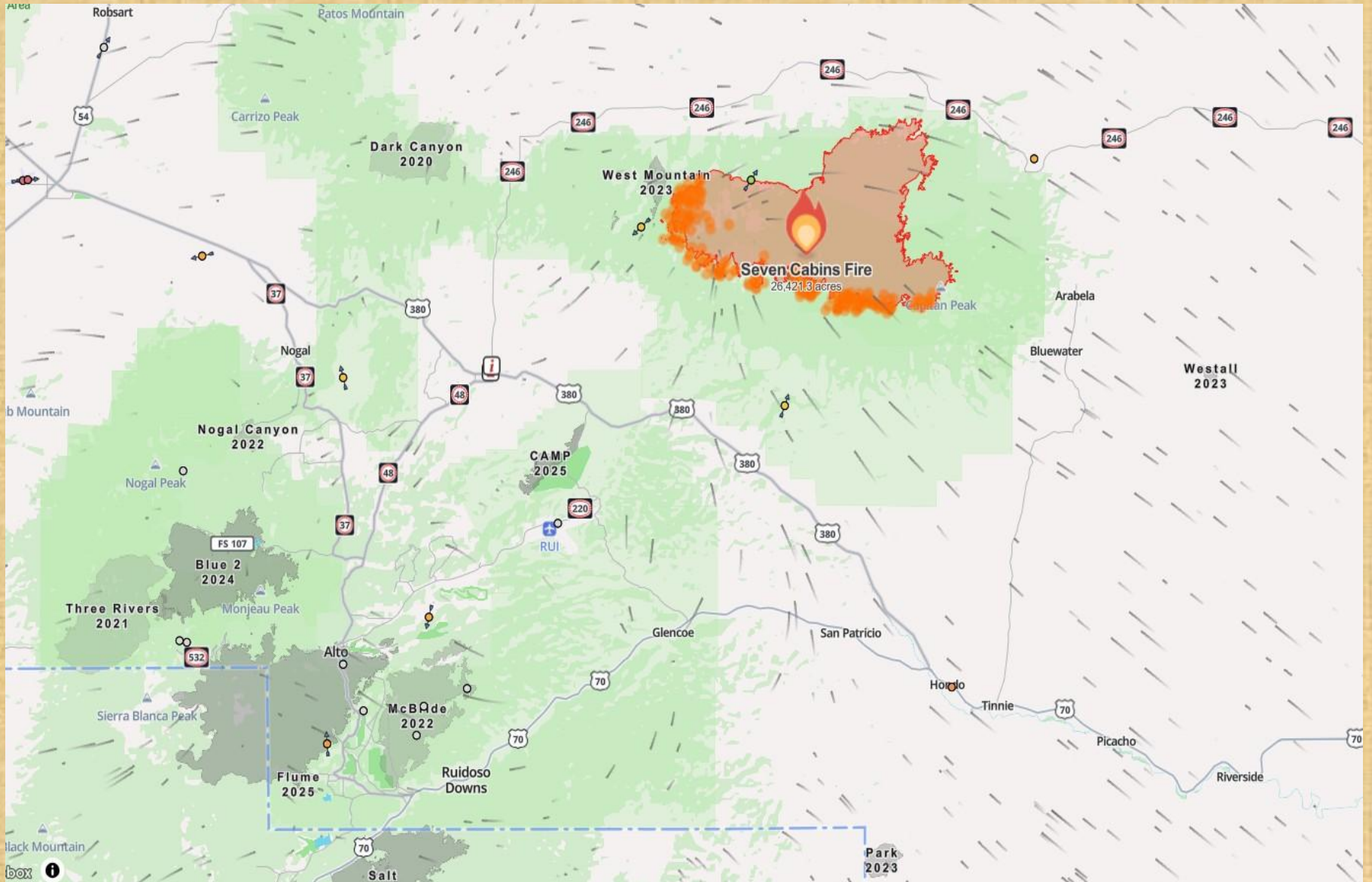
May 25 Lightning at El Paso



May 6 Hummingbird Wildfire at 5650 acres



May 24 Seven Cabins Wildfire at 26,421 acres



ENSO Alert System Status:

La Niña Advisory (expires soon)
El Niño Watch (new)

ENSO Alert System

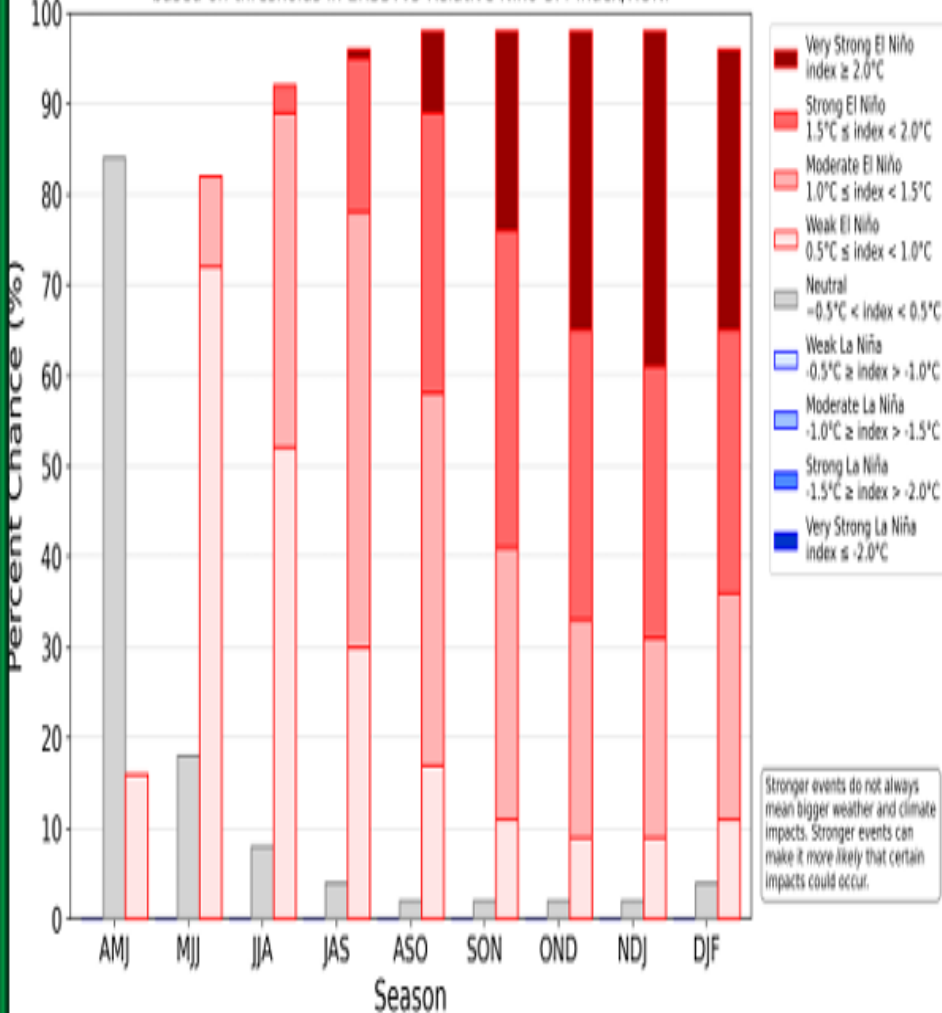
- **El Niño or La Niña Watch:** Issued when conditions are favorable for the development of El Niño or La Niña conditions in the next six months.
- **El Niño or La Niña Advisory:** Issued when El Niño or La Niña conditions are observed and expected to continue.

ENSO Forecast

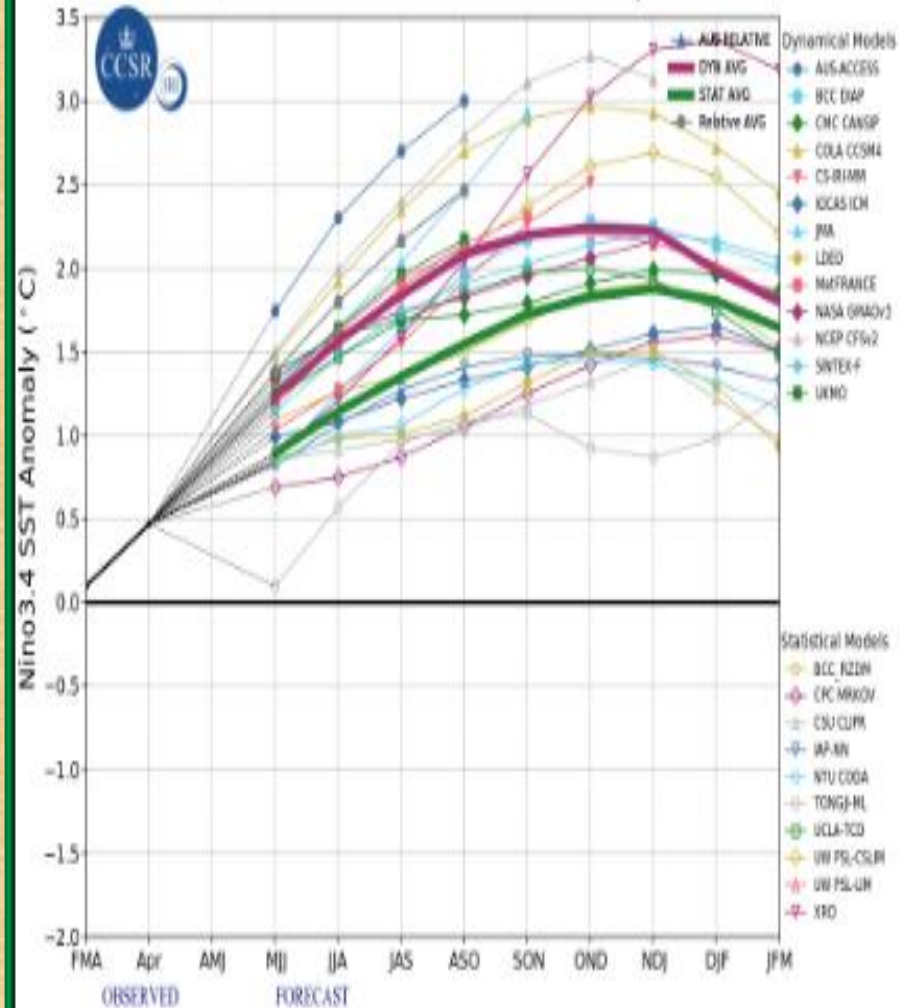
ENSO is currently in a weak El Niño phase and will likely reach strong by the end of summer and very strong this Fall.

NOAA CPC ENSO Strength Probabilities (issued May 2026)

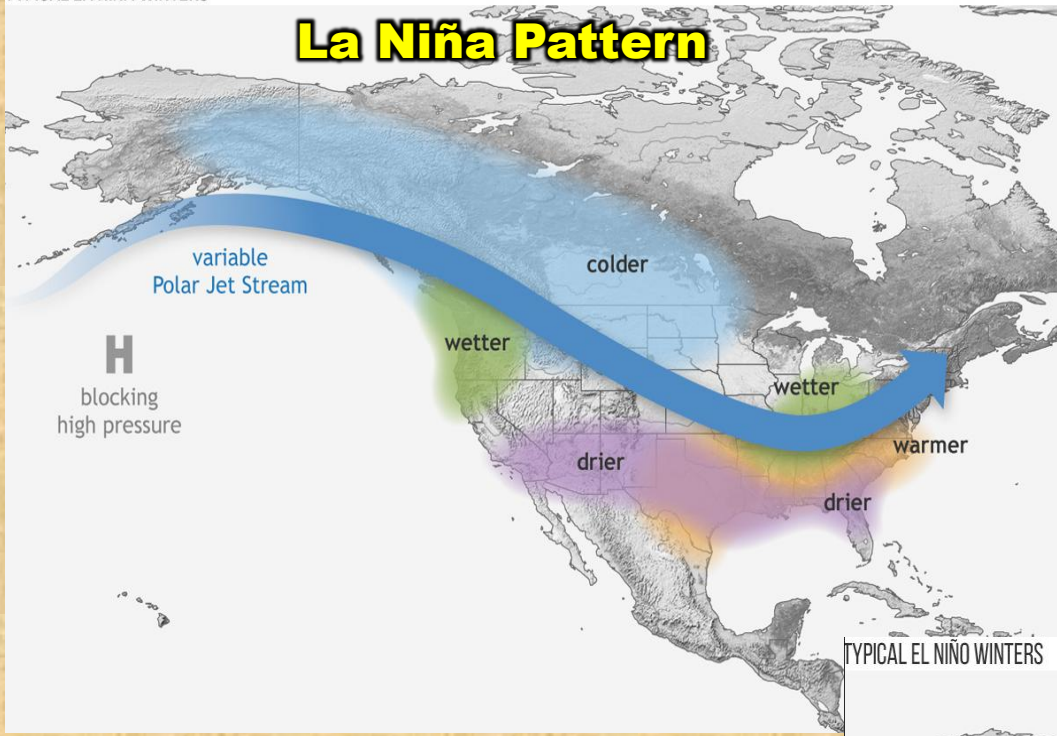
based on thresholds in ERSSTv5 Relative Niño-3.4 index/RONI



CCSR/IRI Model Predictions of ENSO from May 2026

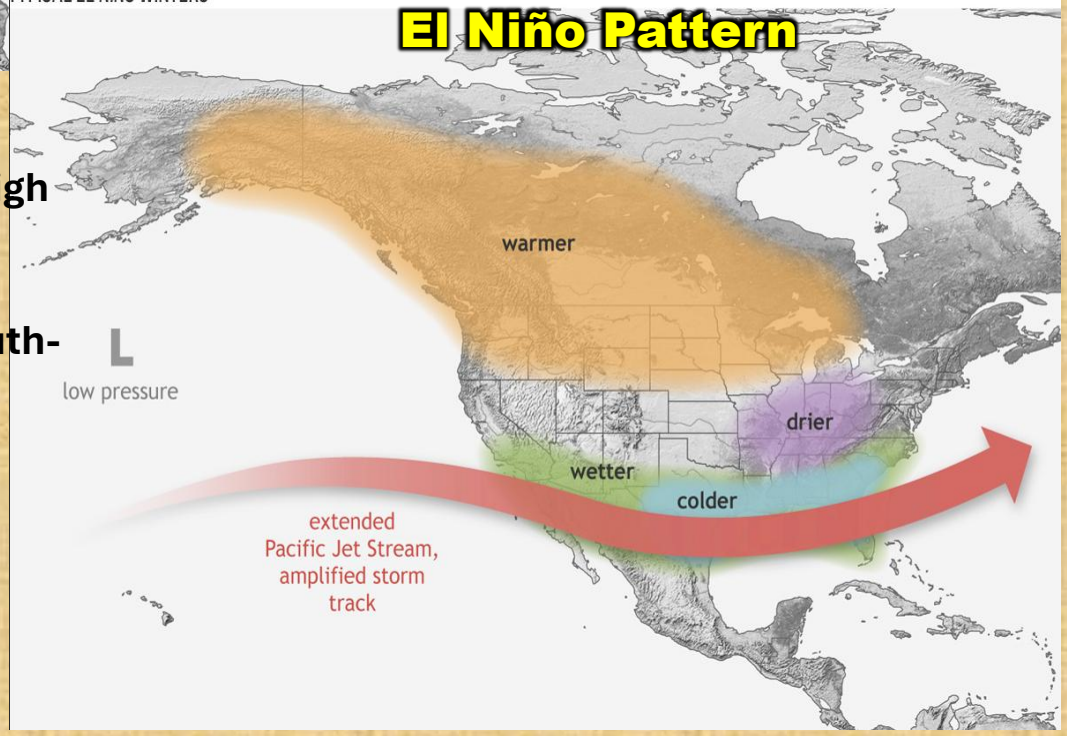


La Niña Pattern



With a La Niña pattern, a ridge of high pressure tends to build off the west coast of the U.S., blocking most of our Pacific winter storm systems. These storms tend to end up moving across the northern Plains and down to the southeastern part of the country. Of course it is important to remember that these patterns are only what typically happens and are not guaranteed to occur.

El Niño Pattern



With El Niño, we often see the opposite pattern where the eastern Pacific ridge of high pressure is often weak or non-existent, allowing winter storms to sweep across the southern U.S. This typically will give the southwestern U.S. above normal precipitation.

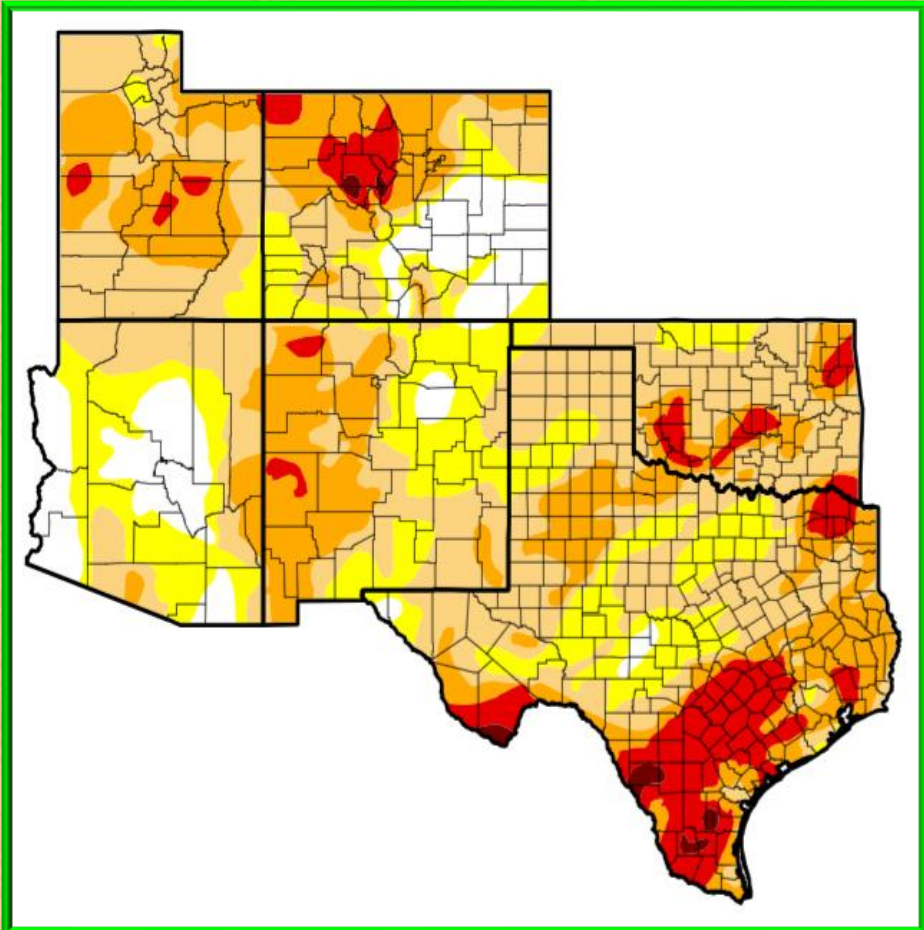
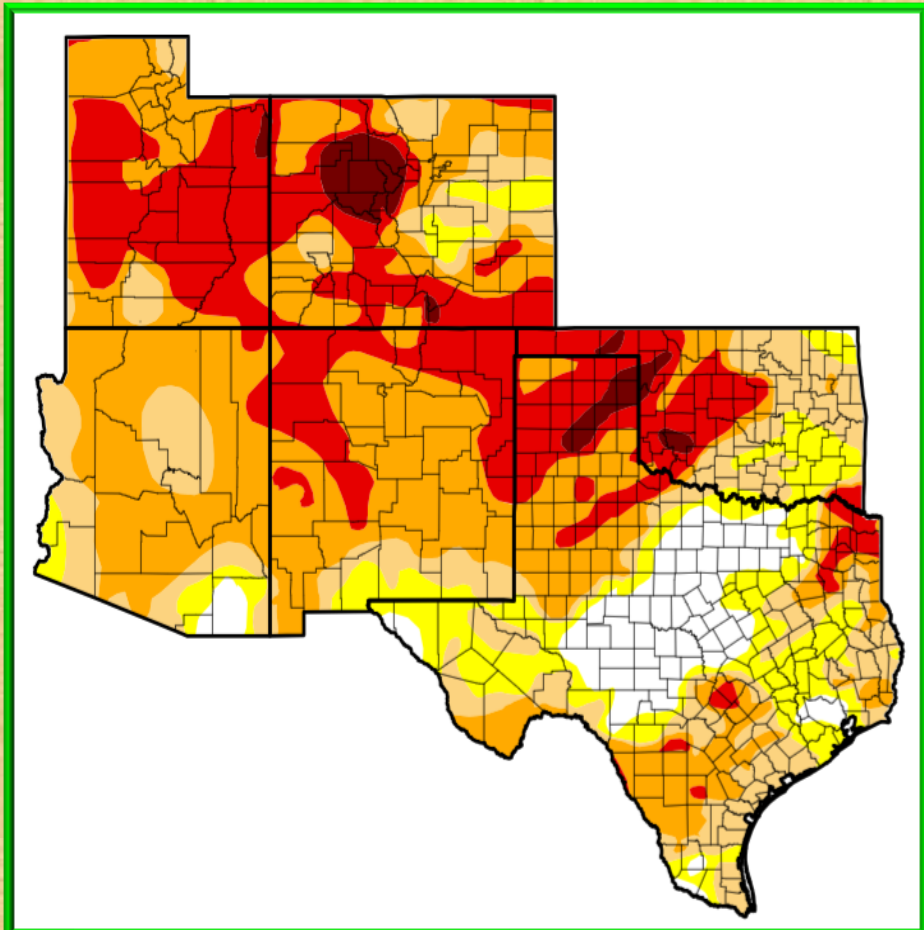
Intensity:

- None
- D0 Abnormally Dry
- D1 Moderate Drought
- D2 Severe Drought
- D3 Extreme Drought
- D4 Exceptional Drought

Current drought conditions and 3 month change

May 26, 2026

Feb 24, 2026



Precipitation for the Water YTD Oct 1 – May 31, 2026 Compared to last few years and average values

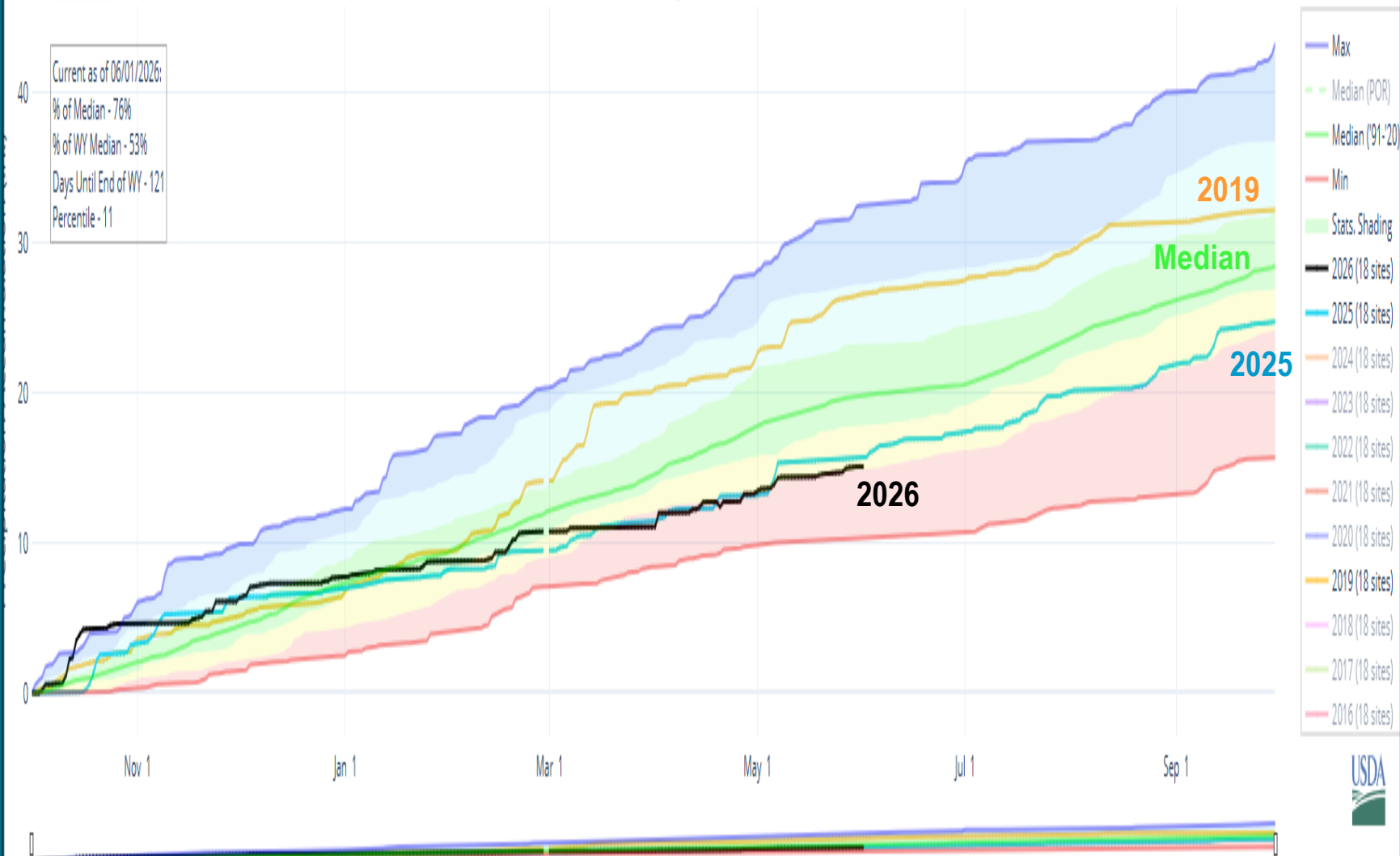
Upper Rio Grande Basin

Reset Range

[Link to data: CSV / JSON](#)

Station List

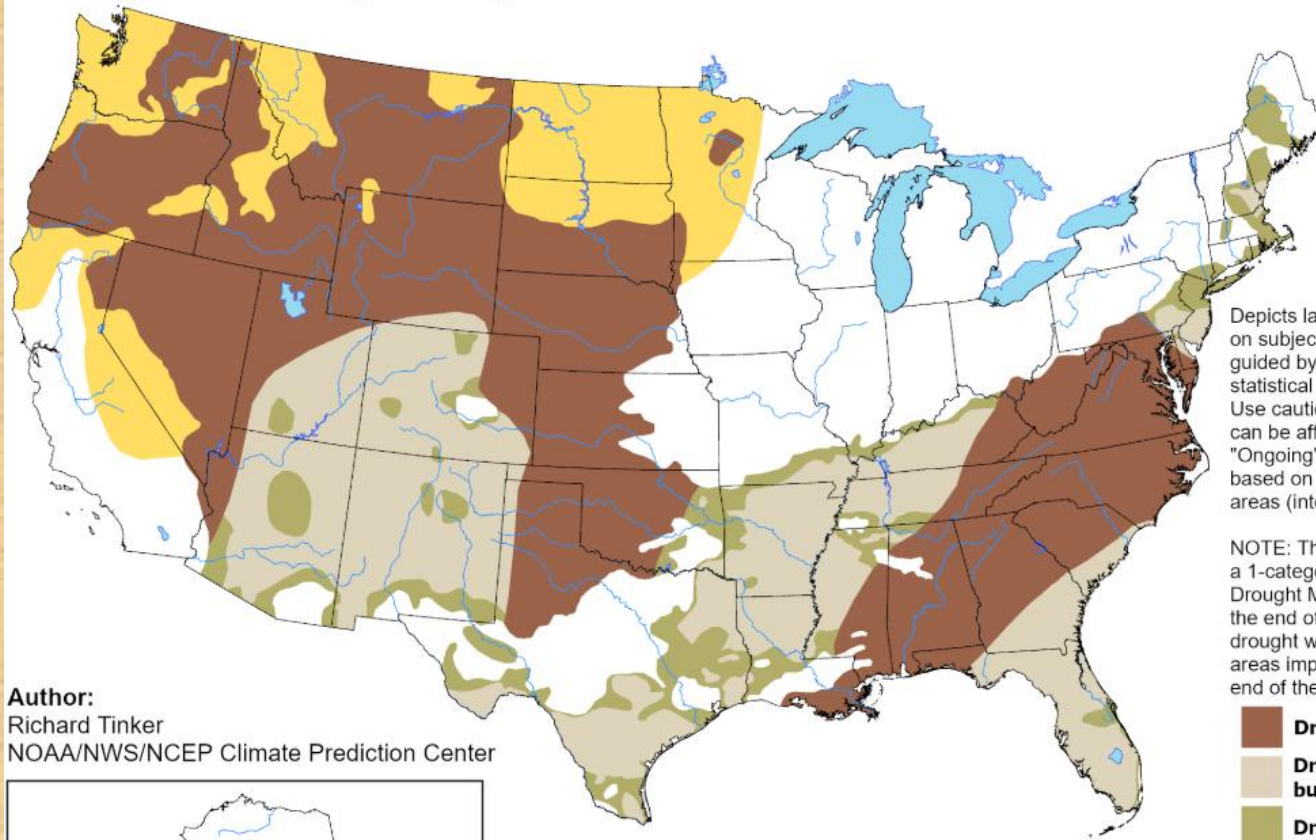
Current as of 06/01/2026:
% of Median - 76%
% of WY Median - 53%
Days Until End of WY - 121
Percentile - 11



U.S. Seasonal Drought Outlook

Drought Tendency During the Valid Period

Valid for May 21 - August 31, 2026
Released May 21, 2026

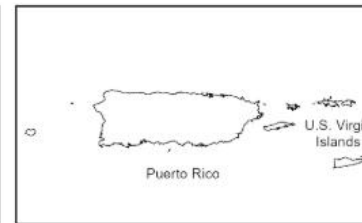
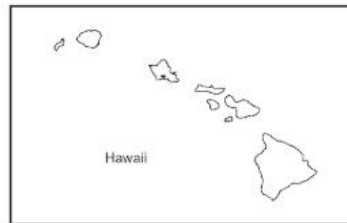


Depicts large-scale trends based on subjectively derived probabilities guided by short- and long-range statistical and dynamical forecasts. Use caution for applications that can be affected by short lived events. "Ongoing" drought areas are based on the U.S. Drought Monitor areas (intensities of D1 to D4).

NOTE: The tan areas imply at least a 1-category improvement in the Drought Monitor intensity levels by the end of the period, although drought will remain. The green areas imply drought removal by the end of the period (D0 or none).

-  **Drought persists**
-  **Drought remains, but improves**
-  **Drought removal likely**
-  **Drought development likely**
-  **No drought**

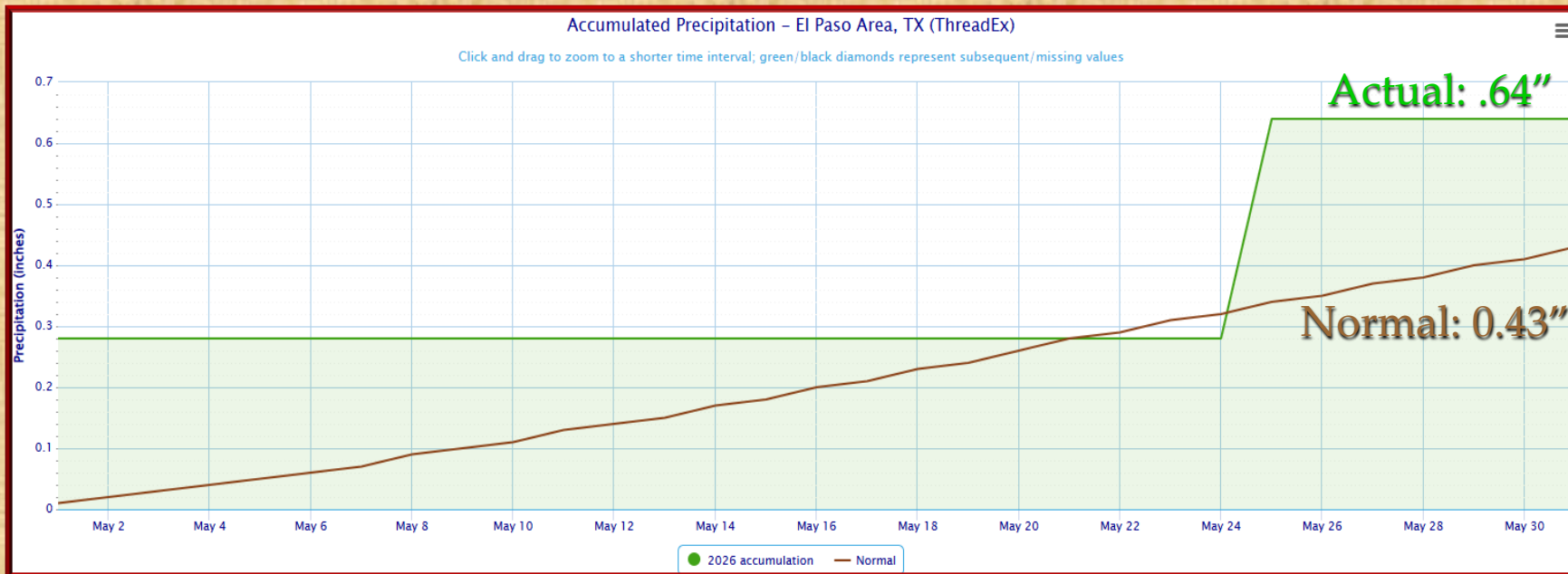
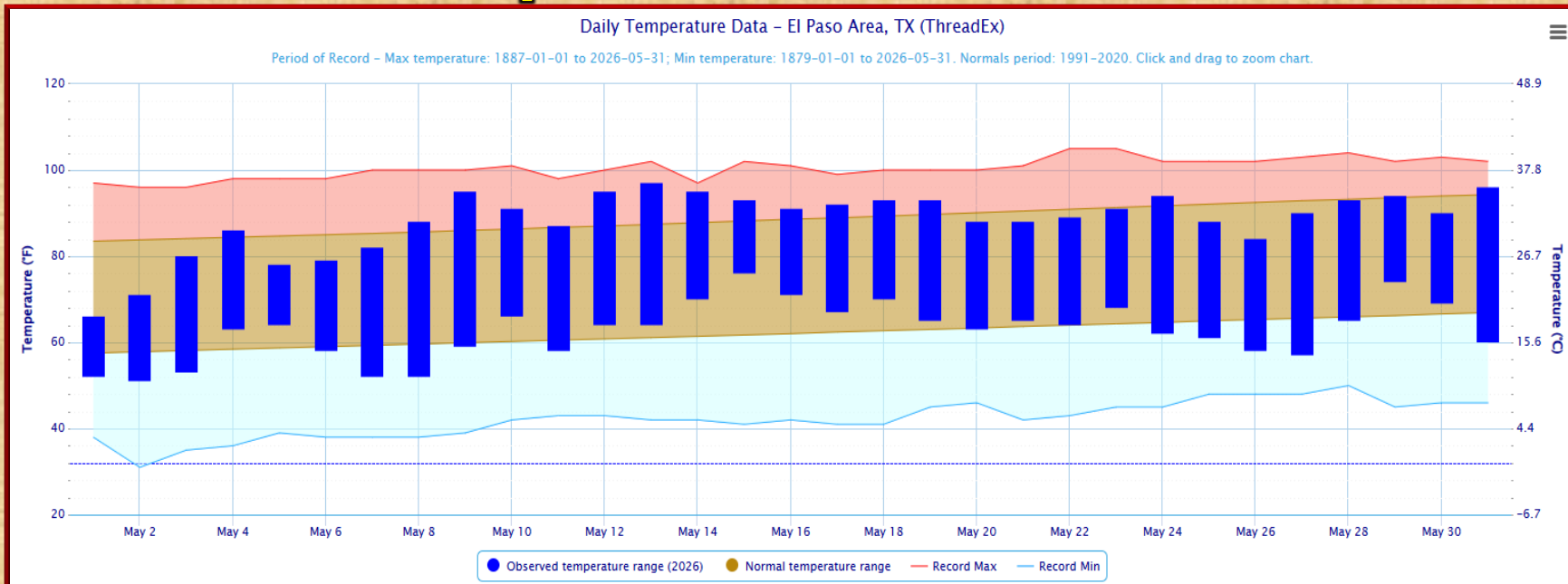
Author:
Richard Tinker
NOAA/NWS/NCEP Climate Prediction Center



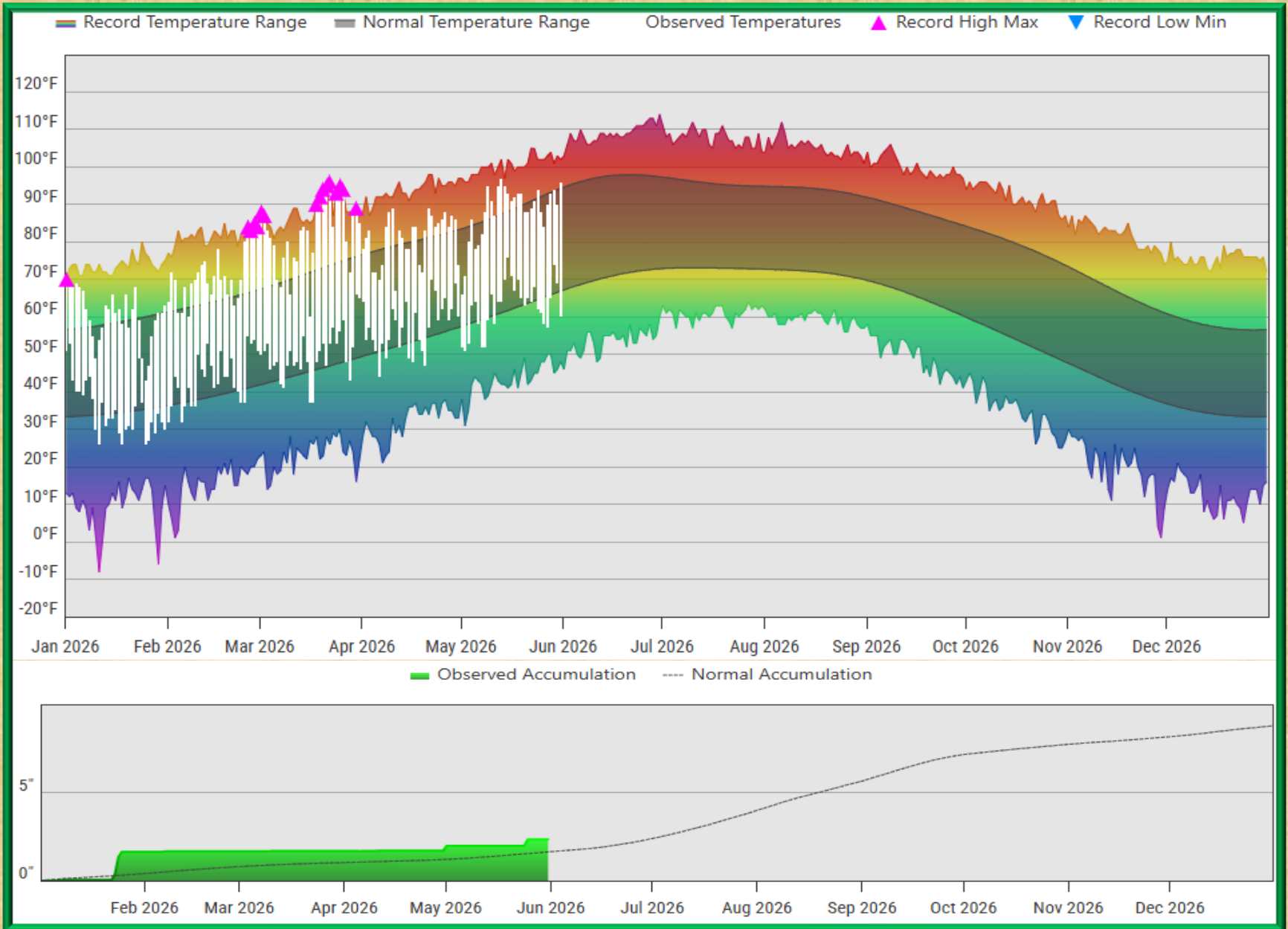
<https://go.usa.gov/3eZ73>

Temperature and precipitation data for April 2026 in El Paso

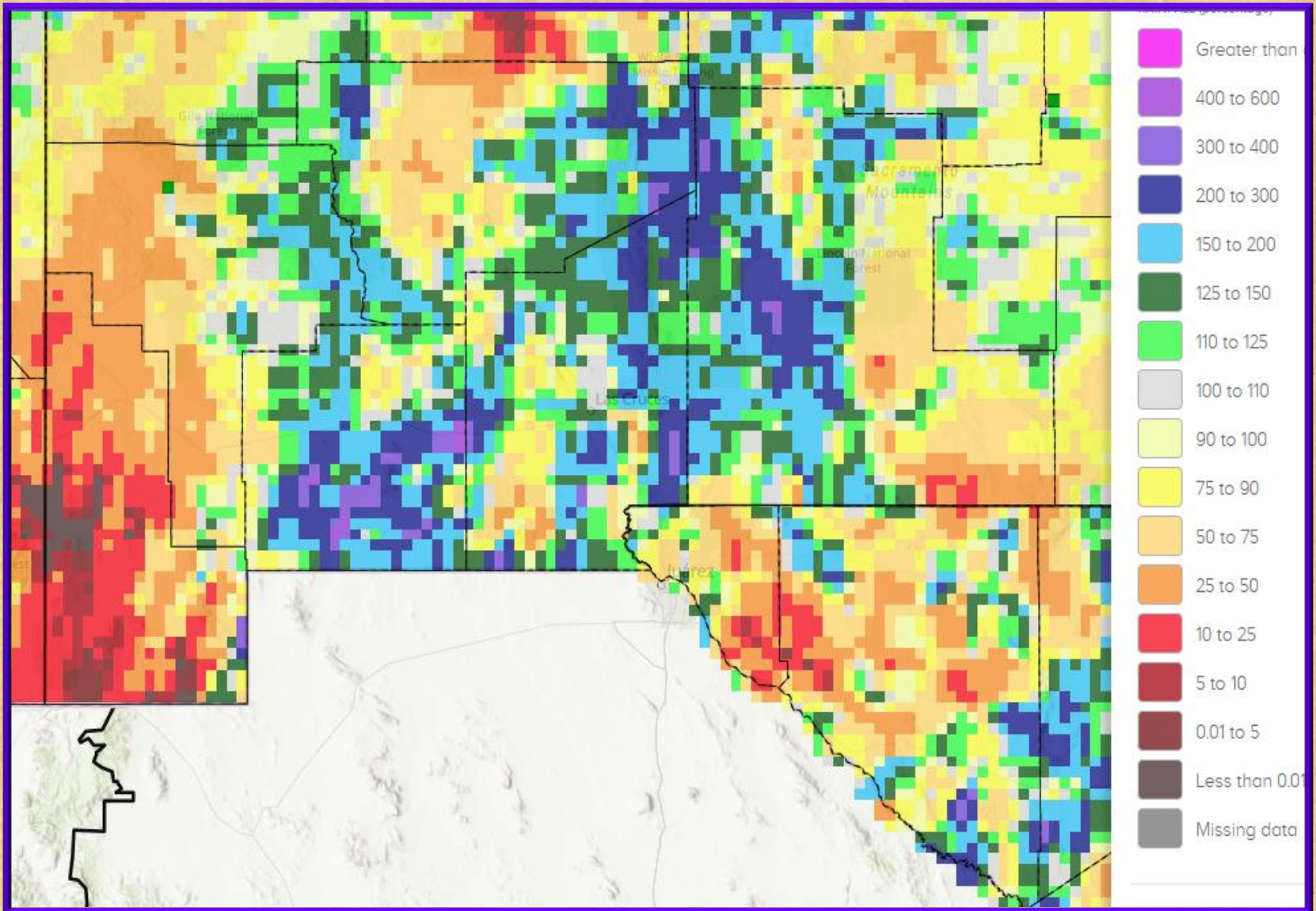
○ = record



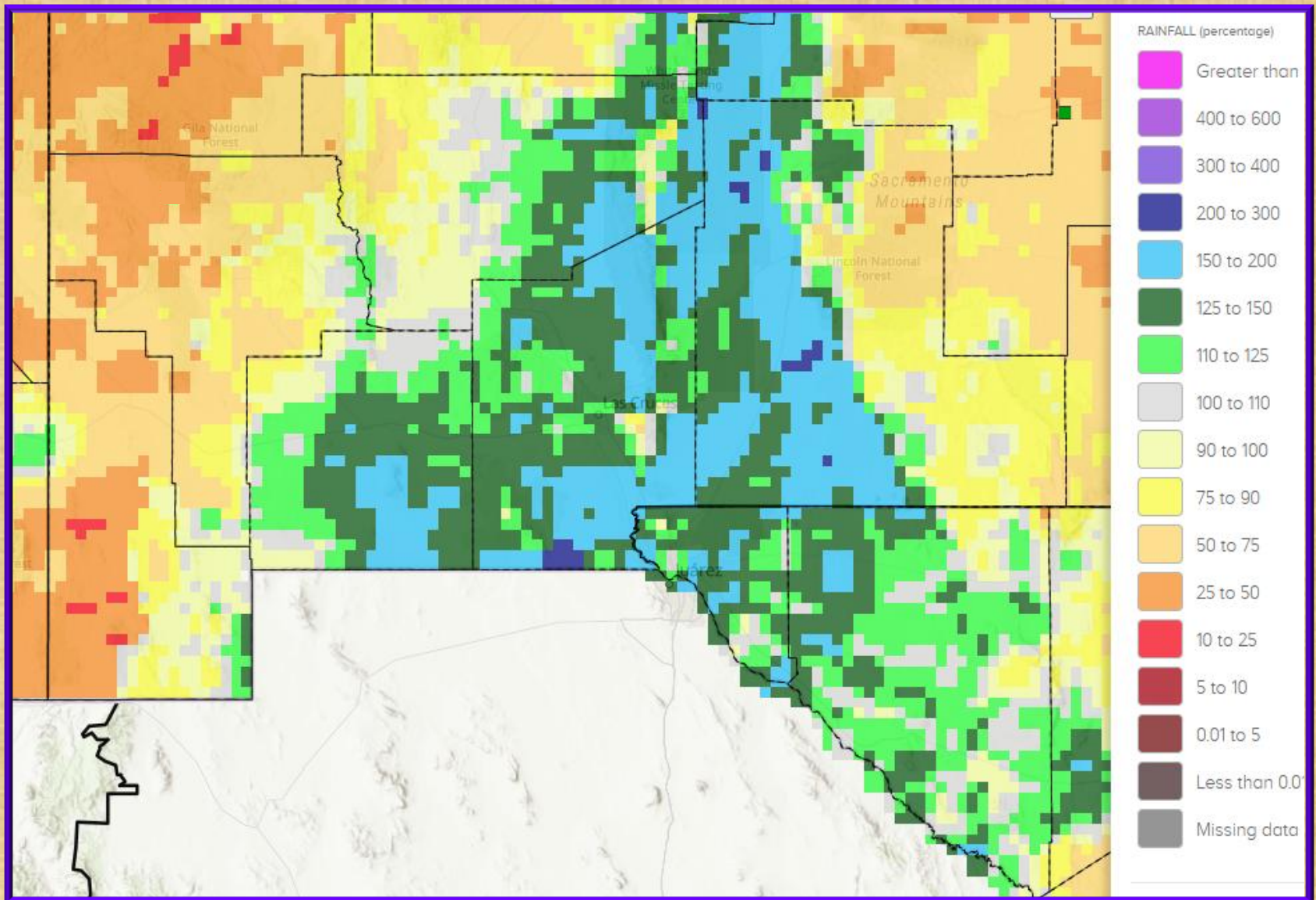
2026 Temperature and Precipitation through April for El Paso



May 2026 rainfall estimate percent of normal



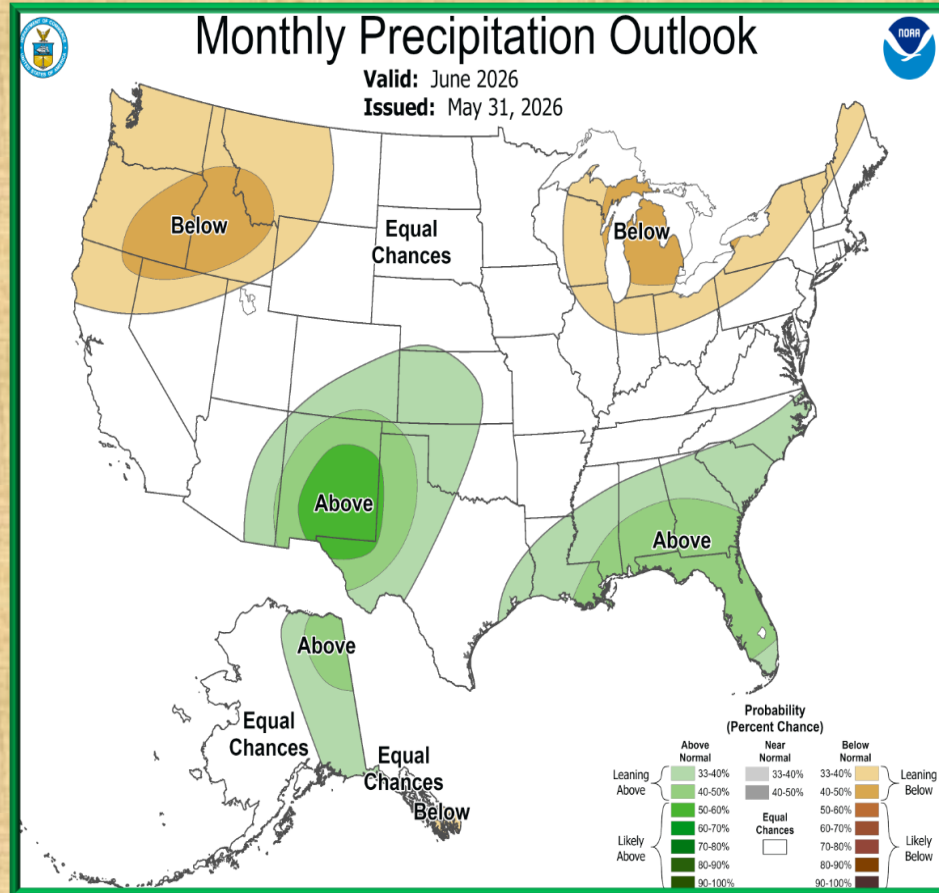
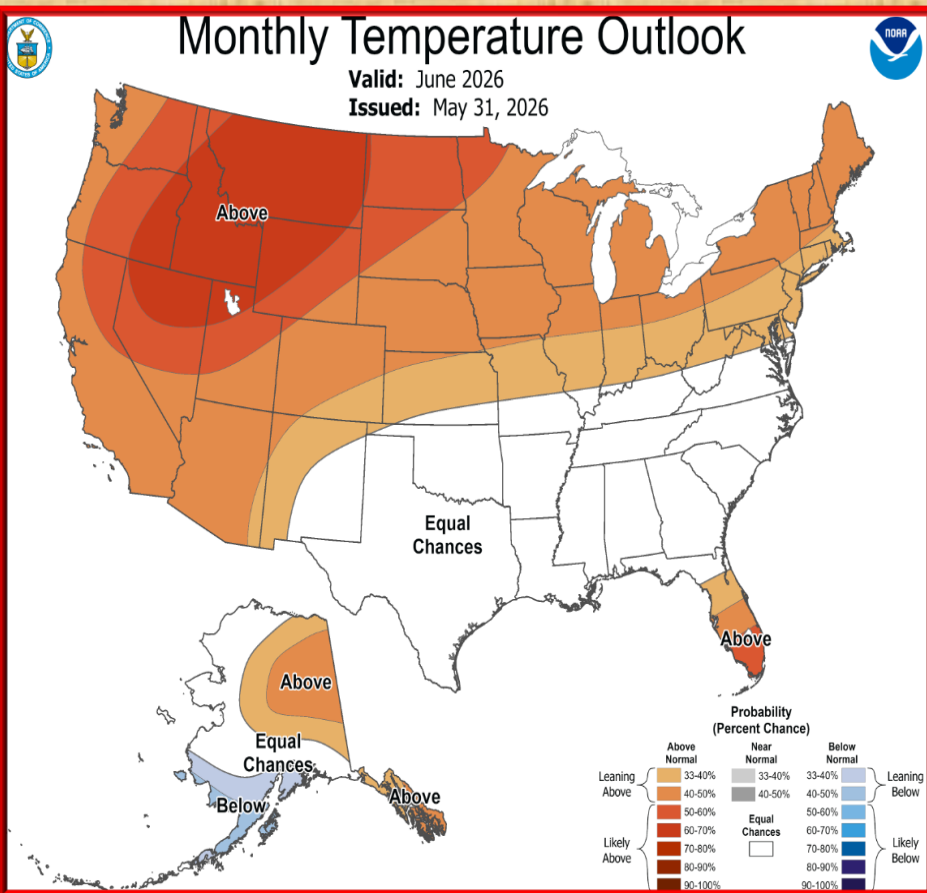
Radar rainfall estimate percent of normal for the Water Year (Oct 1 – May 31)



Temperature and Precipitation Outlook For June 2026

Temperature

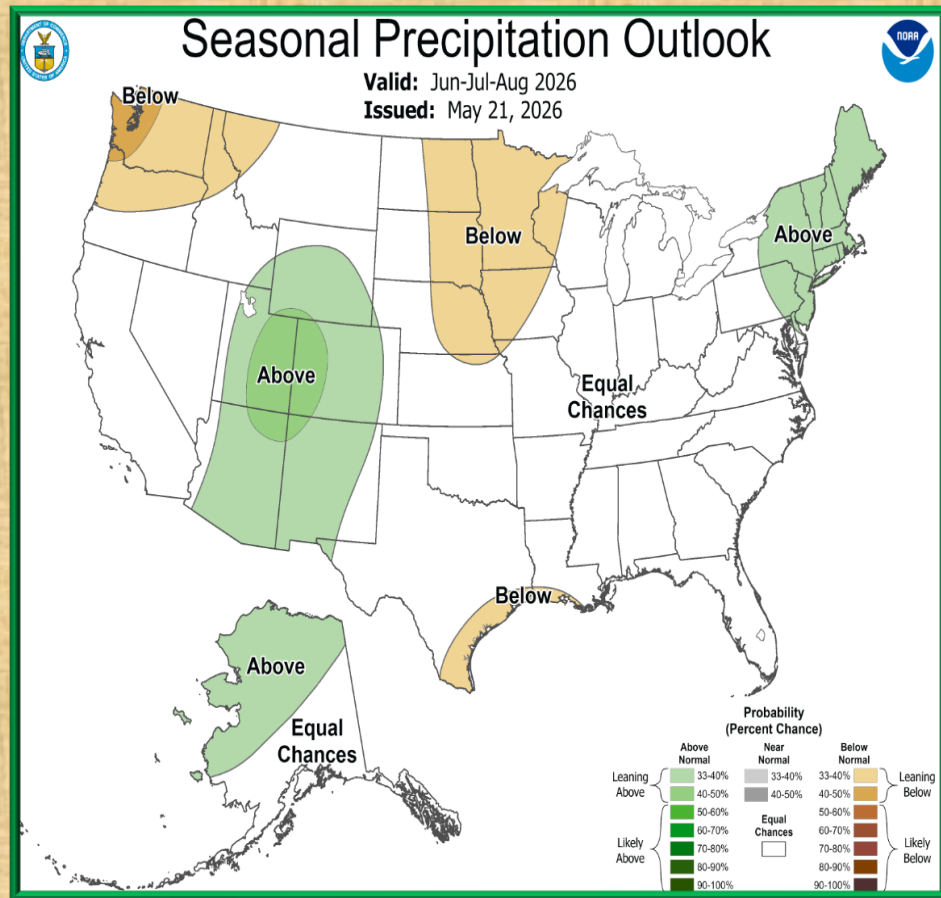
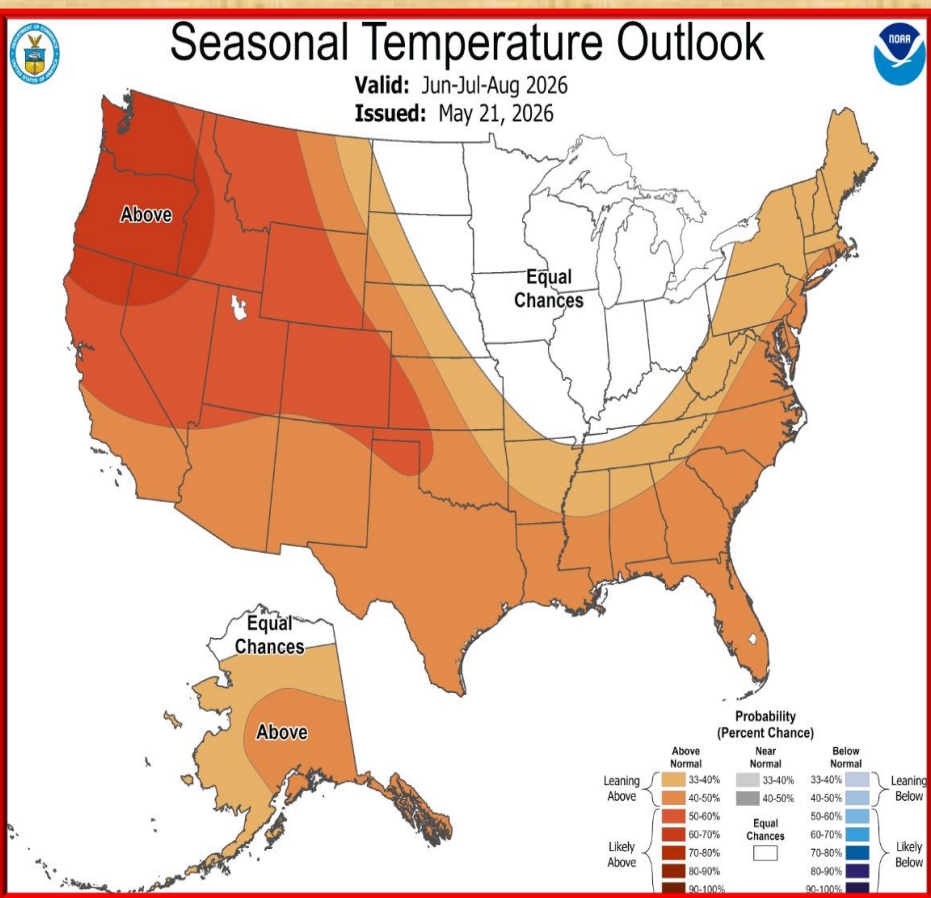
Precipitation



Temperature and Precipitation Outlook for Jun-Aug 2026

Temperature

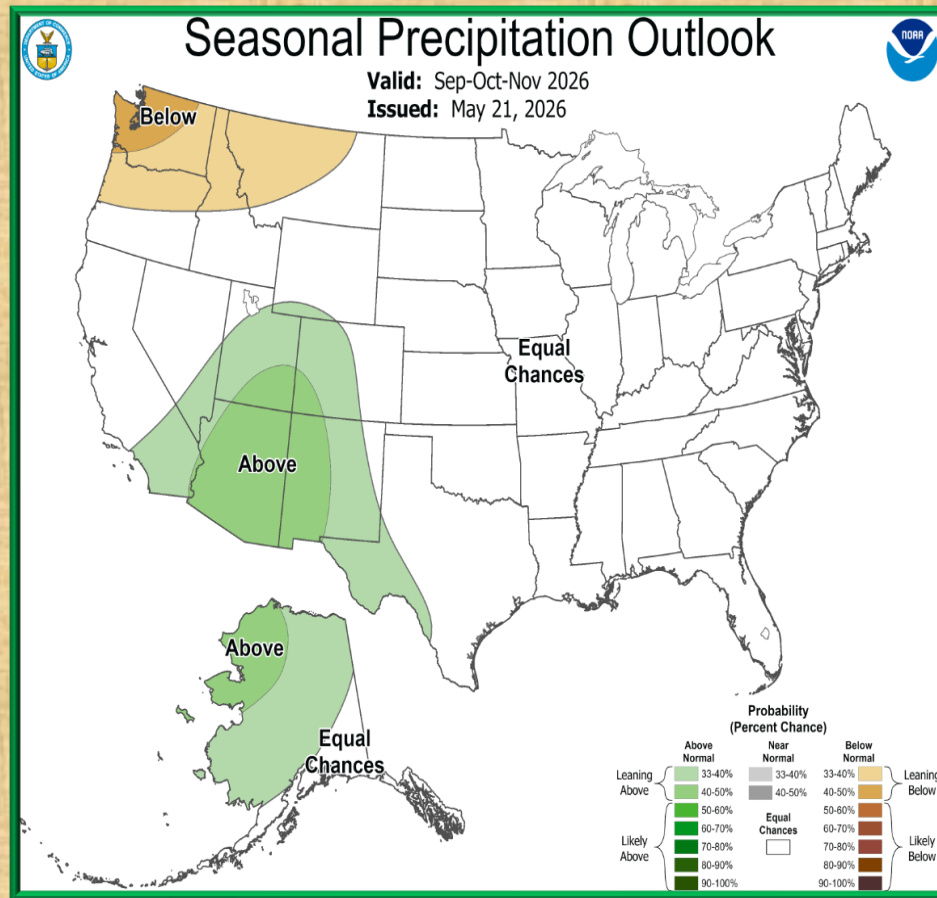
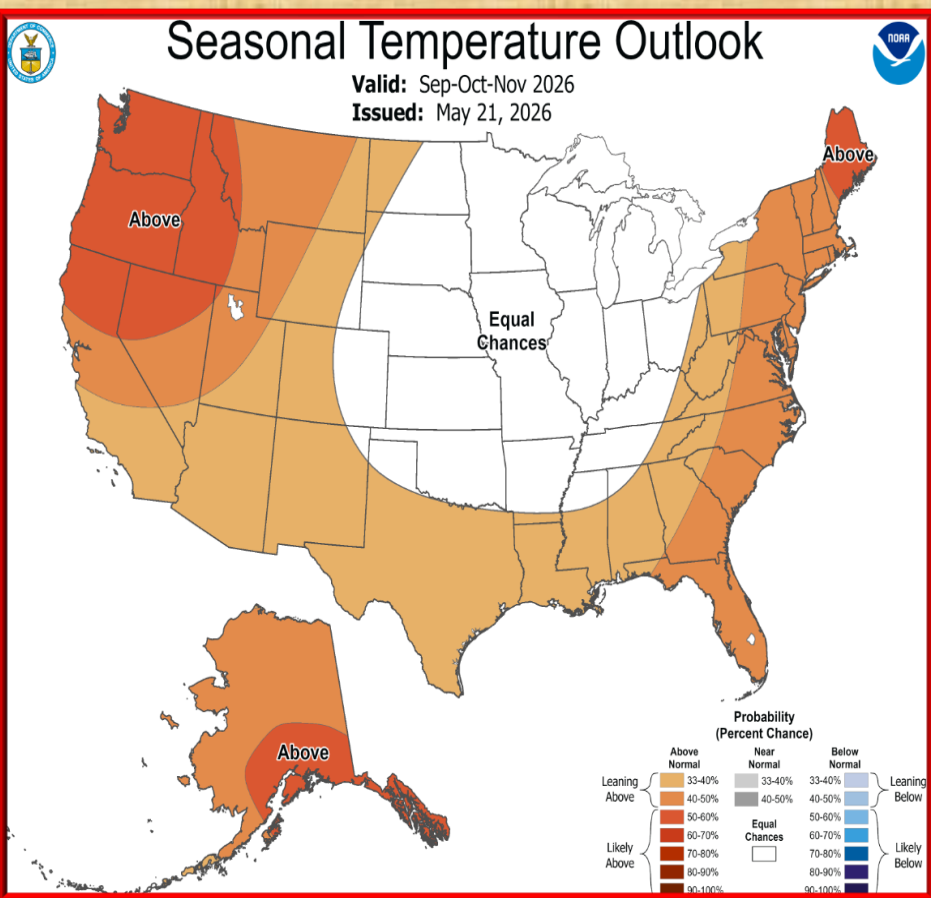
Precipitation



Temperature and Precipitation Outlook for Sep-Nov 2026

Temperature

Precipitation

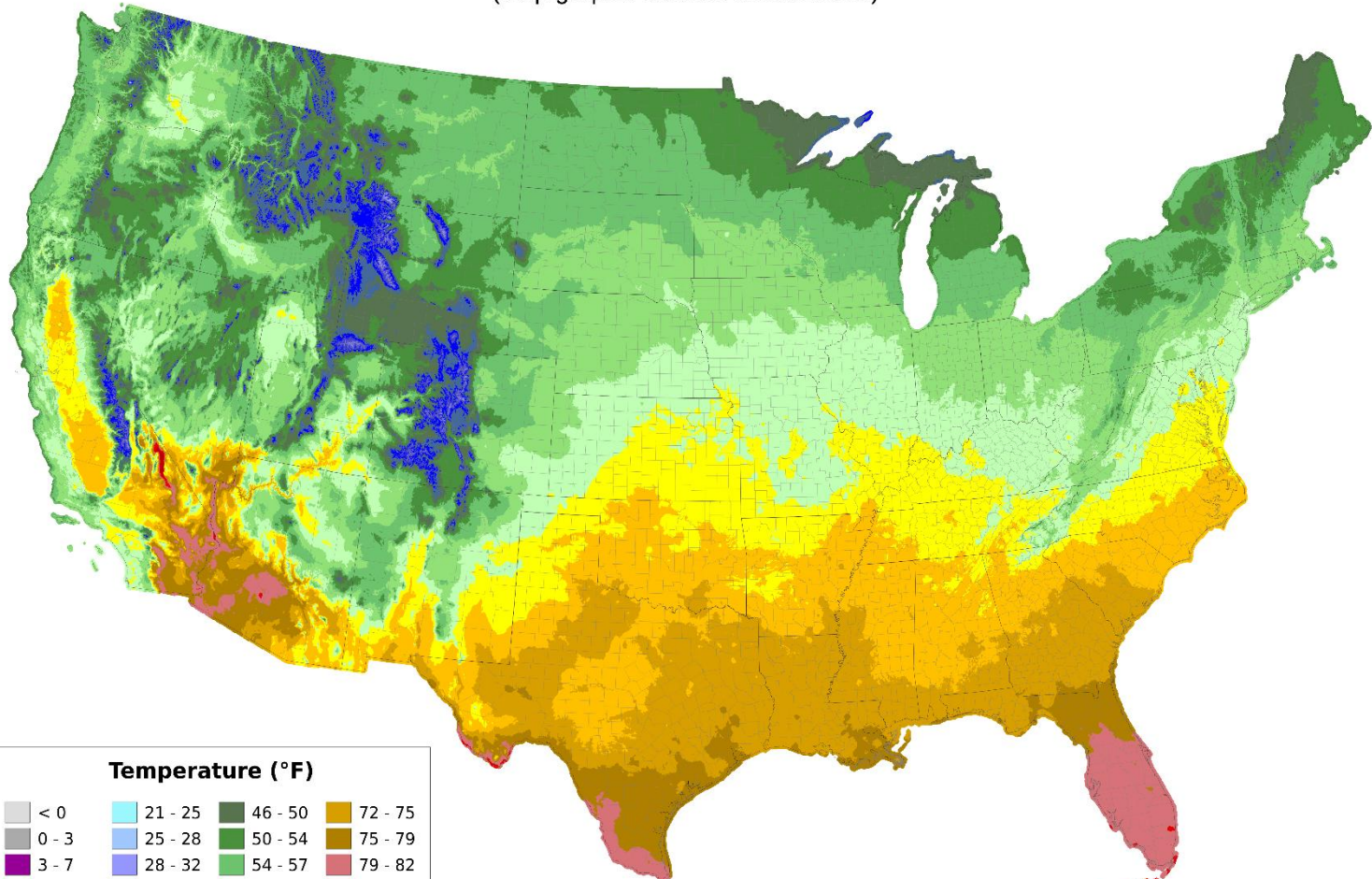


Average Daily Mean Temperature for May 2026

Average Daily Mean Temperature: 01 May 2026 - 31 May 2026

Period ending 7 AM EST 31 May 2026

(Map graphic created 01 Jun 2026)



Temperature (°F)

< 0	21 - 25	46 - 50	72 - 75
0 - 3	25 - 28	50 - 54	75 - 79
3 - 7	28 - 32	54 - 57	79 - 82
7 - 10	32 - 36	57 - 61	82 - 86
10 - 14	36 - 39	61 - 64	86 - 90
14 - 18	39 - 43	64 - 68	> 90
18 - 21	43 - 46	68 - 72	

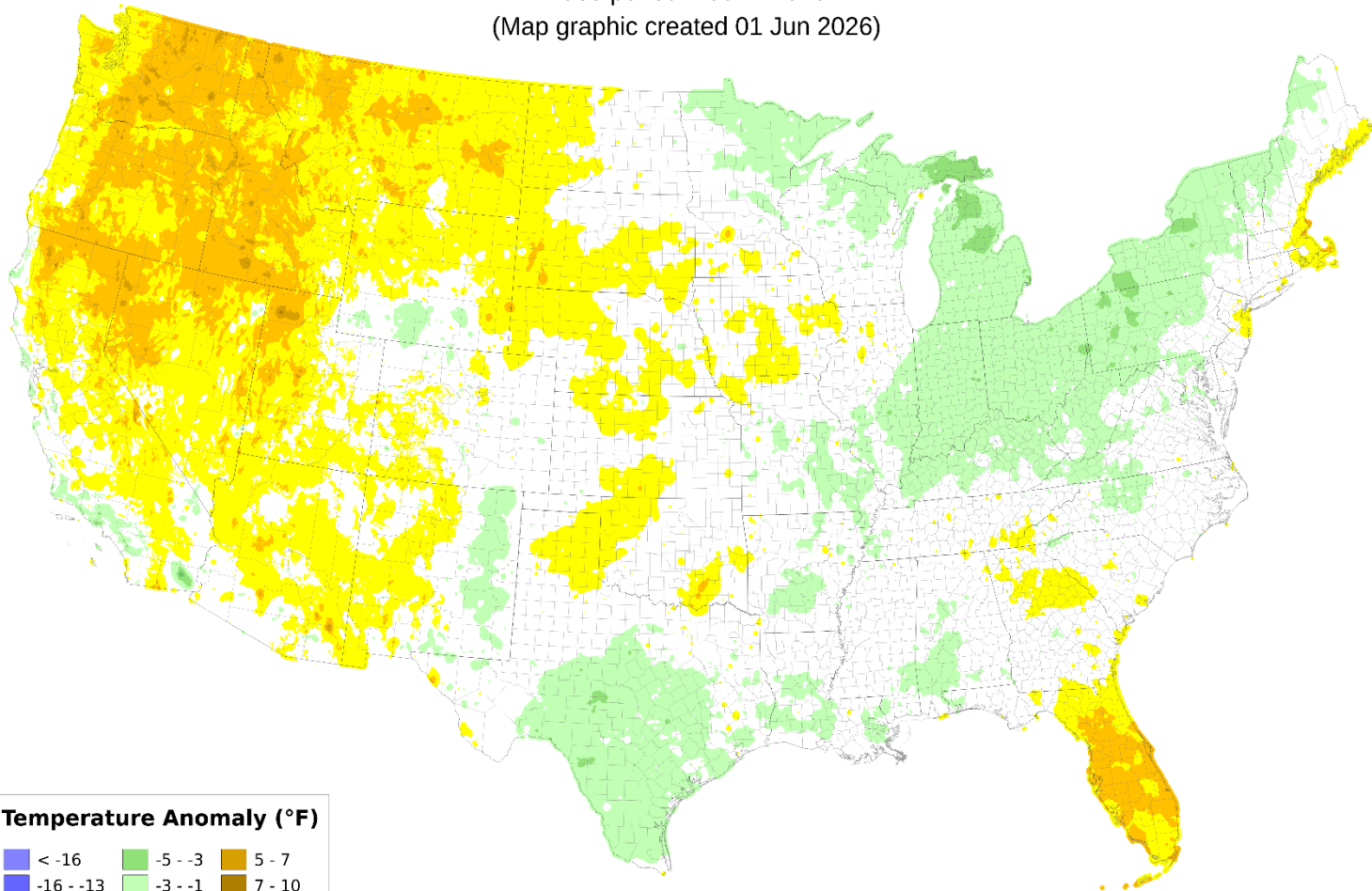
Daily Mean Temperature Departure from Normal, May 2026

Daily Mean Temperature Anomaly: 01 May 2026 - 31 May 2026

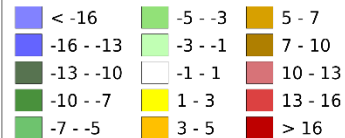
Period ending 7 AM EST 31 May 2026

Base period: 1991 - 2020

(Map graphic created 01 Jun 2026)



Temperature Anomaly (°F)

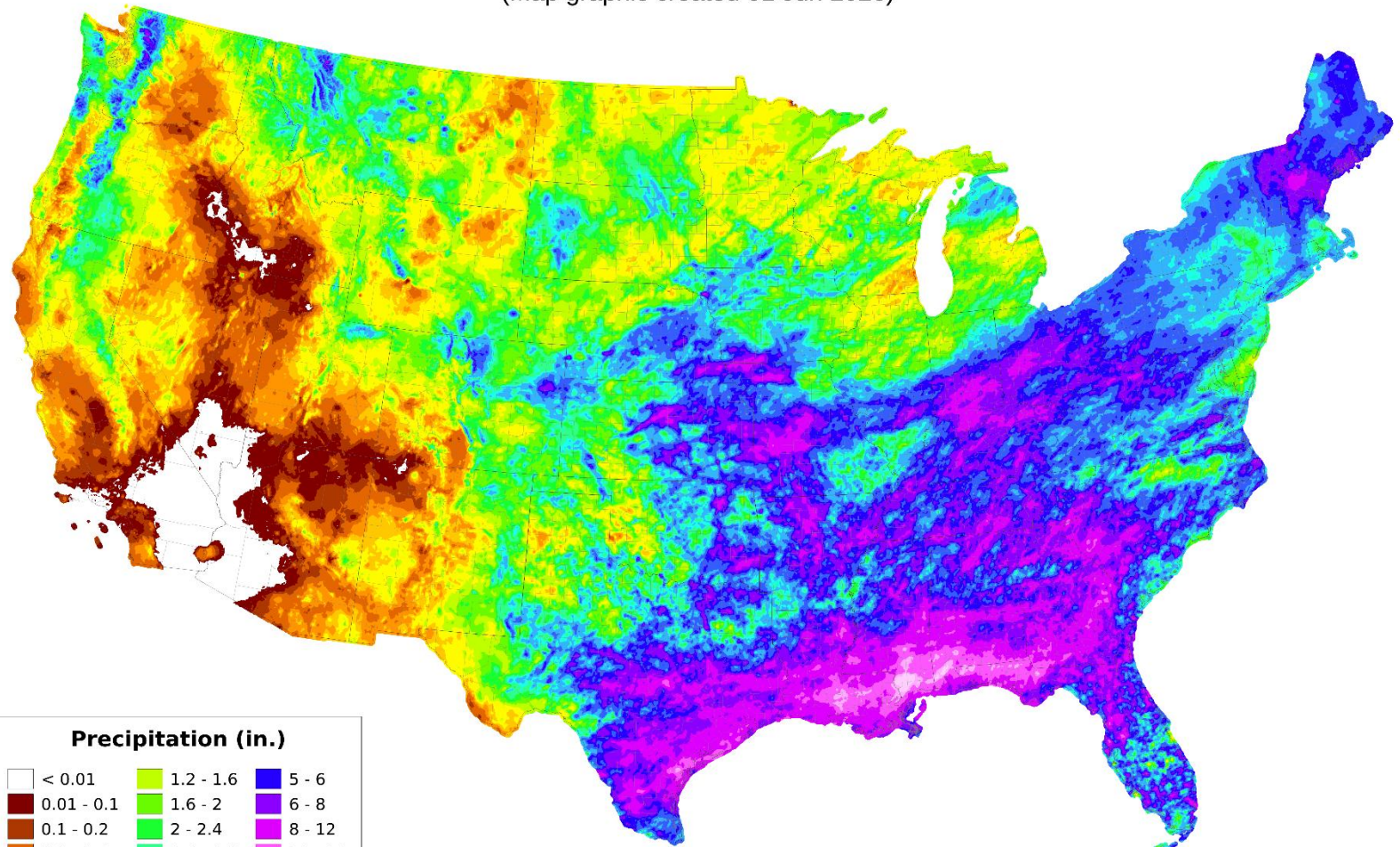


Total Precipitation for May 2026

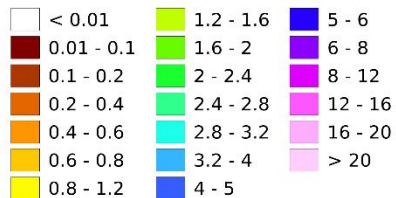
Total Precipitation: 01 May 2026 - 31 May 2026

Period ending 7 AM EST 31 May 2026

(Map graphic created 01 Jun 2026)



Precipitation (in.)



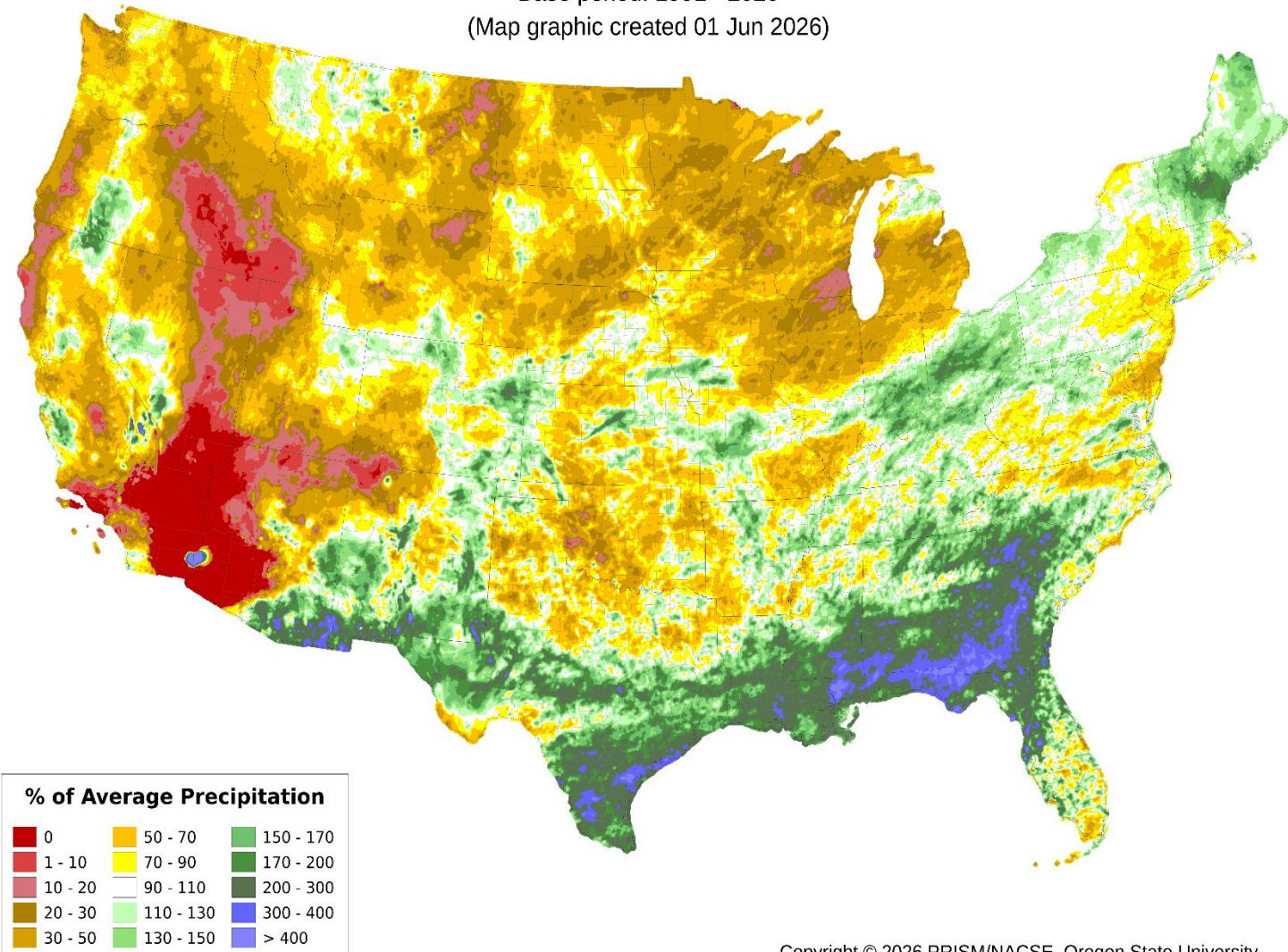
Percent of Normal Precipitation for May 2026

Total Precipitation Anomaly: 01 May 2026 - 31 May 2026

Period ending 7 AM EST 31 May 2026

Base period: 1991 - 2020

(Map graphic created 01 Jun 2026)



Selected Weather Reports May 2026

Date/Time	Location (County)	Event
MAY 3 700 AM	RODEO-HIDALGO	1.56" 24 HOUR RAINFALL
MAY 3 630 PM	MAYHILL-OTERO	1.46" 24 HOUR RAINFALL
MAY 3 626 PM	DRIPPING SPRINGS-DONA ANA	1.03" 24 HOUR RAINFALL
MAY 3 800 AM	TIMBERON-OTERO	0.95" 24 HOUR RAINFALL
MAY 3 616 PM	ALAMOGORDO-OTERO	0.80" 24 HOUR RAINFALL
MAY 3 700 AM	LAS CRUCES 2ENE-DONA ANA	0.72" 24 HOUR RAINFALL
MAY 3 730 AM	SILVER CITY 2NW-GRANT	0.70" 24 HOUR RAINFALL
MAY 3 700 AM	HILLSBORO-SIERRA	0.61" 24 HOUR RAINFALL
MAY 3 700 AM	CLOUDCROFT-OTERO	0.55" 24 HOUR RAINFALL
MAY 3 700 AM	EL PASO 6N-EL PASO	0.50" 24 HOUR RAINFALL
MAY 3 700 AM	MESQUITE-DONA ANA	0.40" 24 HOUR RAINFALL
MAY 3 700 AM	CLIFF 6NE-GRANT	0.40" 24 HOUR RAINFALL

Selected Weather Reports May 2026

Date/Time	Location (County)	Event
MAY 13 500 PM	LORDSBURG PLAYA MP11-HIDALGO	80 MPH PEAK WIND
MAY 13 500 PM	LORDSBURG PLAYA MP12-HIDALGO	70 MPH PEAK WIND
MAY 13 441 PM	MESCALERO-OTERO	49 MPH PEAK WIND
MAY 13 725 PM	SAN AUGUSTIN PASS-DONA ANA	43 MPH PEAK WIND
MAY 13 435 PM	GRANT CO AIRPORT-GRANT	40 MPH PEAK WIND

Special Features

www.weather.gov/epz/elpwindrosedata

Month: MAY

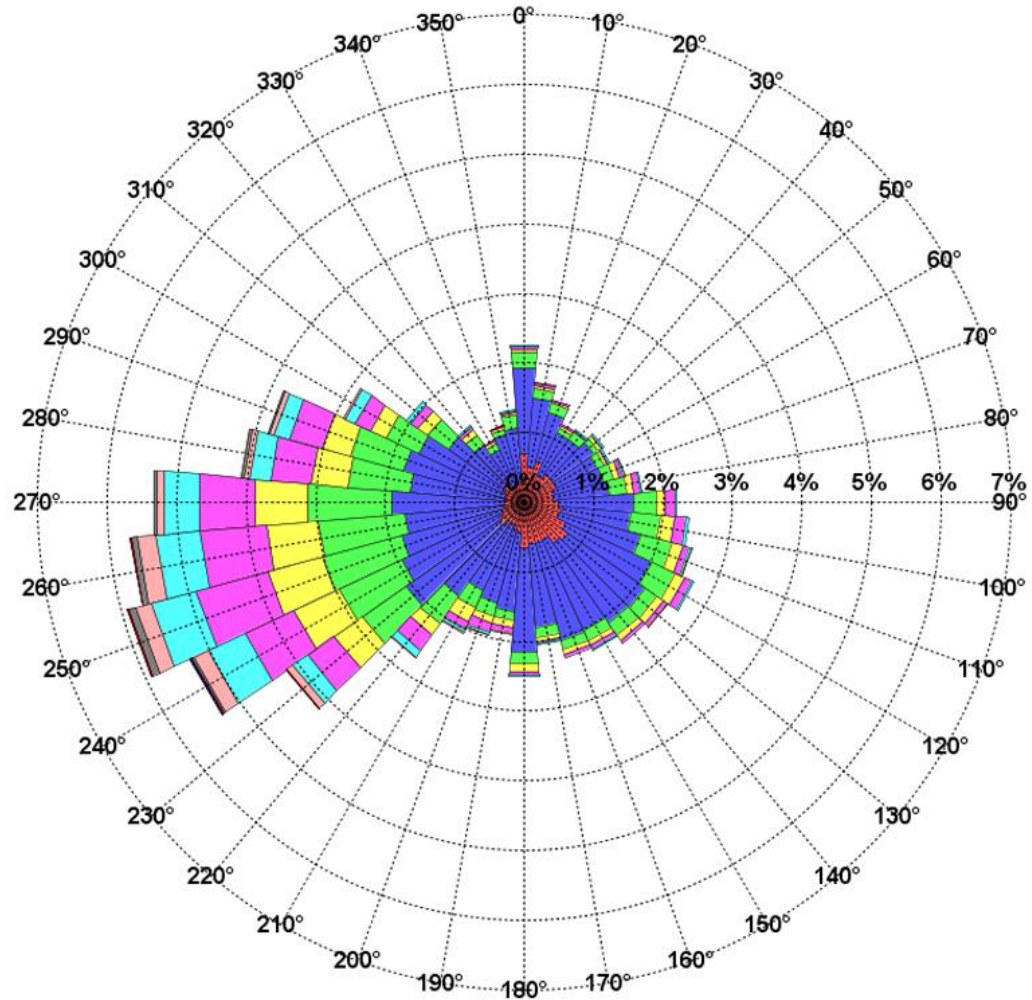
Calm: 6.44%

Variable: 2.66%

WindRose - KELP - EL PASO INTL

% Frequency of Wind Speed from a Direction

POR:19730101-20140602



Click a location below for detailed forecast.



Last Map Update: Thu, Aug 7, 2025 at 3:48:31 pm PDT

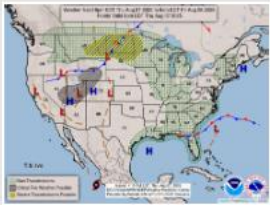
Watches, Warnings & Advisories

Extreme Heat Warning Heat Advisory

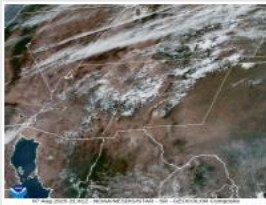
Zoom Out



Radar



Weather Map



Satellite

Grid of weather service icons:

- Briefing
- Forecast Discussion
- Weather Hazards Outlook
- Hourly Forecast
- Gridded Forecast
- Weather Calculator
- Current Observations
- Satellite
- Climate Data
- Past Weather
- Drought
- Hydrology
- Wx Radio
- Skywarn
- Fire Weather
- Vo1unteer
- Aviation
- Social Media
- Weather Digest
- Monsoon/Tropical

Don't Forget-Current and past issues of our Weather Digest are available on our website at

www.weather.gov/epz/

Just click on "Weather Digest" icon, then choose which month's Digest to view. Also, though discontinued, don't forget to check out our back issues of Southwest Weather Bulletin.

Location Help

Appalachians. Click the "Head More" link for excessive rainfall forecasts from the Weather Prediction Center. Afternoon showers and thunderstorms are possible over portions of the Southwest and southern Rockies through Friday. [Read More >](#)

Monthly Weather Digest
 Weather.gov > El Paso, TX > Monthly Weather Digest

El Paso, TX
Weather Forecast Office

Current Hazards | Current Conditions | Radar | Forecasts | Rivers and Lakes | Climate and Past Weather | Local Programs

City, ST
 Enter Your City, ST or ZIP Code
 Remember Me
 Get Weather
 Privacy Policy

Southern New Mexico and Far West Texas has a variety of weather from month to month. Conditions can range from extreme drought, to heavy flooding rains, from record breaking heat to bone chilling cold. Below you will find past weather highlights from the area that the NWS office in Santa Teresa NM covers. This area includes the following counties in New Mexico: Hudspeth, Grant, Luna, Sierra, Doña Ana and Otero and the following counties in Texas: El Paso and Hudspeth.

WEATHER DIGESTS AND BULLETINS	
Weather Digest	Southwest Weather Bulletins
January	2005 Spring Fall
February	2006 Spring Fall
March	2007 Spring Fall
April	2008 Spring Fall
May	2009 Spring Fall
June	2010 Spring Fall
July	2011 Spring Fall
August	2012 Spring Fall
September	2013 Spring Fall
October	2014 Spring Fall
November	
December	

