

Citizens Weather Observing Program (CWOP)

Configuration for *Weather Display* Users

(Last updated: 13 August 2016)

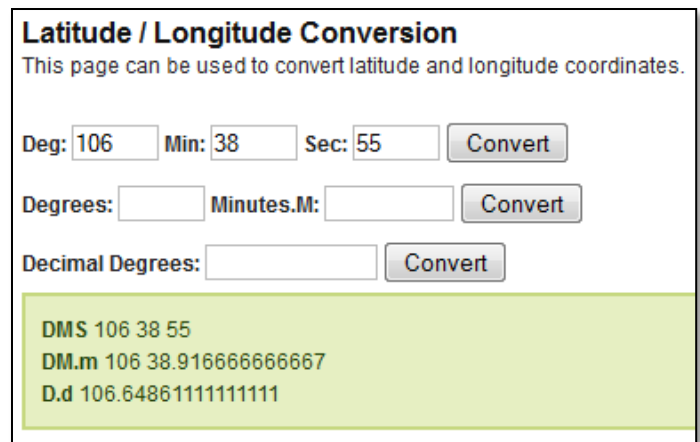
These instructions assume you already have setup Weather Display either for home use, or to upload data to another server (e.g., Weather Underground).

1.) Gather Station Location Data

- You will need your Latitude and Longitude in both decimal degrees and Deg/Min/Sec format, and Elevation in metres.
- If you do not know your lat/lon and elevation, please see the How-To “Signing up for CWOP” for methods to obtain your station location data: www.weather.gov/media/epz/mesonet/CWOP-SignUp.pdf

2.) Convert Lat/Lon

- A useful page for converting lat/lon from decimal degrees to other formats can be found here: <http://www.directionsmag.com/site/latlong-converter>
- Enter your Latitude in the proper fields, then click the ‘Convert’ button.
- Your Latitude will be converted to the various formats. Make sure you have it in both decimal degrees and Deg/Min/Sec format.
- Next, do the same for longitude.



Latitude / Longitude Conversion
This page can be used to convert latitude and longitude coordinates.

Deg: Min: Sec:

Degrees: Minutes.M:

Decimal Degrees:

DMS 106 38 55
DM.m 106 38.916666666667
D.d 106.64861111111111

3.) Get a CWOP Station ID:

With any web browser, fill out the form at:

http://www.findu.com/citizenweather/cw_form.html

CWOP will require your station elevation in meters. You can convert elevation from feet to meters by multiplying your elevation in feet by 0.3048.

The CWOP website is a little “old-fashioned” and unpolished, and it contains far more information than the average user needs. Don’t worry about the parts of the form mentioning “Packet Checking” and “MADIS tech support.”

CITIZEN WEATHER PROGRAM REGISTRATION FORM

To obtain a DW number fill in the form below. You will receive an e-mail reply with your assigned number (similar to "DW1234").

If you have questions, please contact your software provider, or send email to [Randy at NOAA](mailto:Randy@NOAA). Several different ways to check your data packets are at [Packet Checking](#).

If you also send your weather data to another internet site, please contact [MADIS technical support](#) so they will be aware of the possibility of duplicate data.

Thank you for participating in the Citizen Weather Program!

First name	<input type="text" value="John"/>
Last name	<input type="text" value="Doe"/>
email	<input type="text" value="johndoe@anonymous.net"/>
Nearby town	<input type="text" value="Hurricane"/>
State (country if outside US)	<input type="text" value="WV"/>
Zip Code (if US)	<input type="text" value="25526"/>
Elevation	<input type="text" value="215"/> (meters above sea level)

- Make sure you use a valid email address (don't worry – no SPAM).
- If you are a business or agency, you may wish to use its name in place of "First Name" and "Last Name." Otherwise, use whoever will be the primary contact.

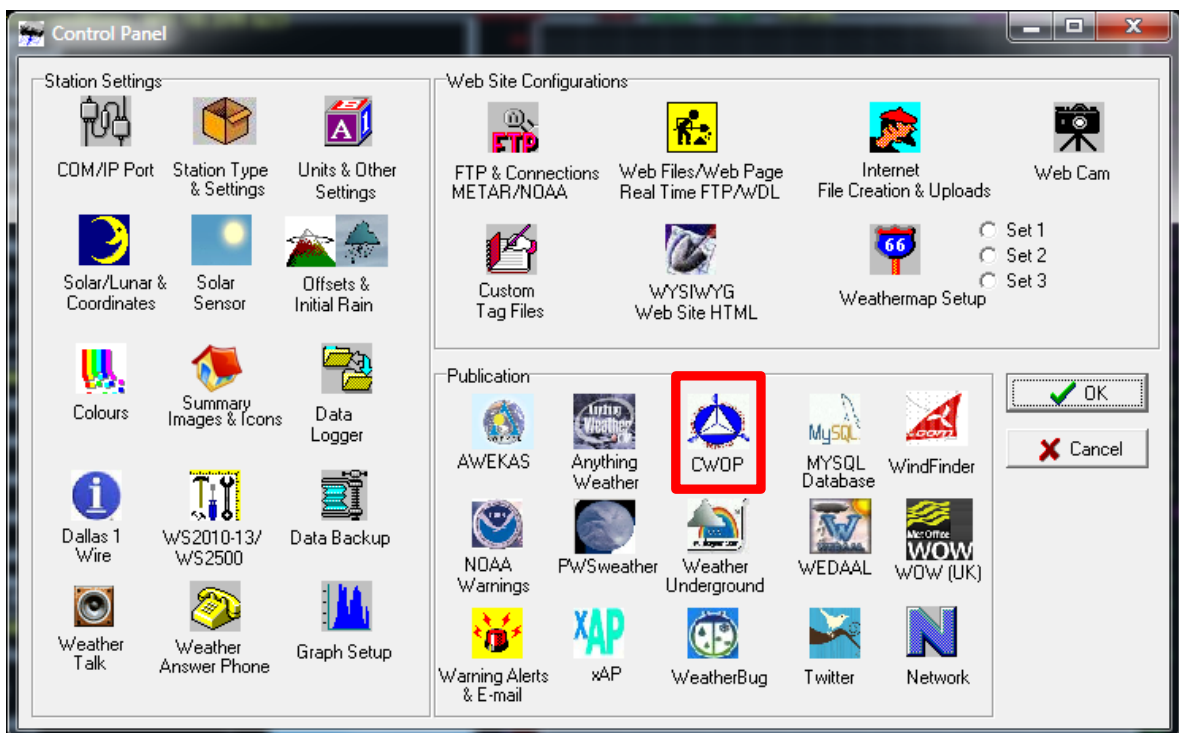
4.) Send the form, then make note of your CWOP Station ID:

Your Citizen's Weather Account Number is: DWxxxx

An email will be sent to John Doe (johndoe@anonymous.net) confirming this number.

5.) Configure Weather Display

- Open Weather Display, then click on "Control Panel."
- Next, click on *CWOP* in the "Publication" Section.



APRS/CWOP Setup

Main Setup | Listen To Other Data | Server Setup/Rotation | Altimeter Barometer Setup

APRS Data Send Times

Hrs: 15 Mins: 20

Offset minutes by: 0

Upload Hourly

Upload every 5 minutes

Upload every 10 mins

Upload every 15 mins

Upload every 30 mins

Remove Time

Clear All

00:00
00:05
00:10
00:15
00:20
00:25
00:30
00:35
00:40
00:45
00:50
00:55
01:00
01:05
01:10
01:15
01:20
01:25
01:30
01:35
01:40
01:45
01:50
01:55
02:00
02:05

CWOP/APRS Data send

Join the APRS network with only a internet connection !

Station ID

DW8512

I am not using a CWOP ID

Latitude

3152.12N

e.g 4003.37N

Longitude

10638.92W

e.g 10503.37W

Degrees Minutes Seconds

31 52 7 Lat. Southern hemisphere

106 38 55 Long. Eastern hemisphere

Convert

The format for the latitude is DDMM.SS(N or S)

Note: The format for the longitude is DDDMM.SS(Wor E)

Check lat/long

APRS Off

Note: Send time is the minute of your CWOP number

Test

Note: The main internet switch, under ftp/internet setup, needs to be ON

Licensed Ham APRS Validation Number

Use gust last 10 minutes only

[Click here to go to the sign up page](#)

[Click here to go to view your data](#)

[Click here to go to the eagle map location page](#)

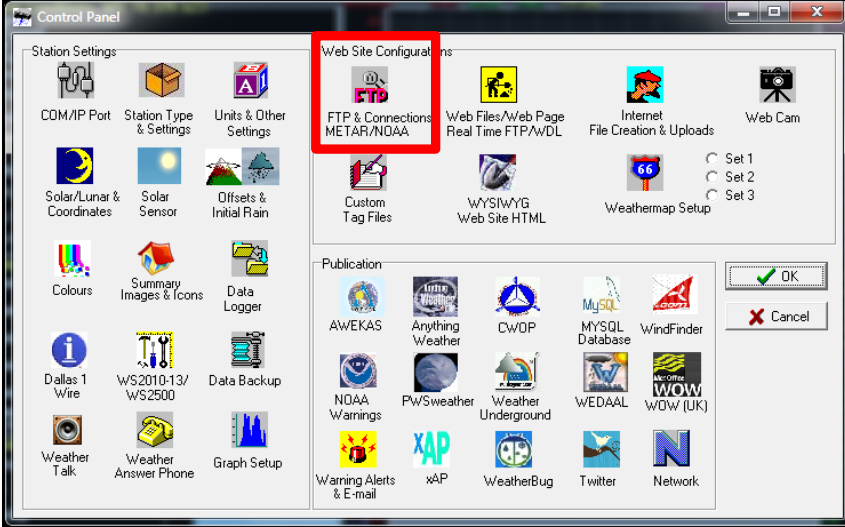
[Click here to go to the NOAA surface reports web site](#)

[Click here to go to a world java viewer of aprs weather data](#)

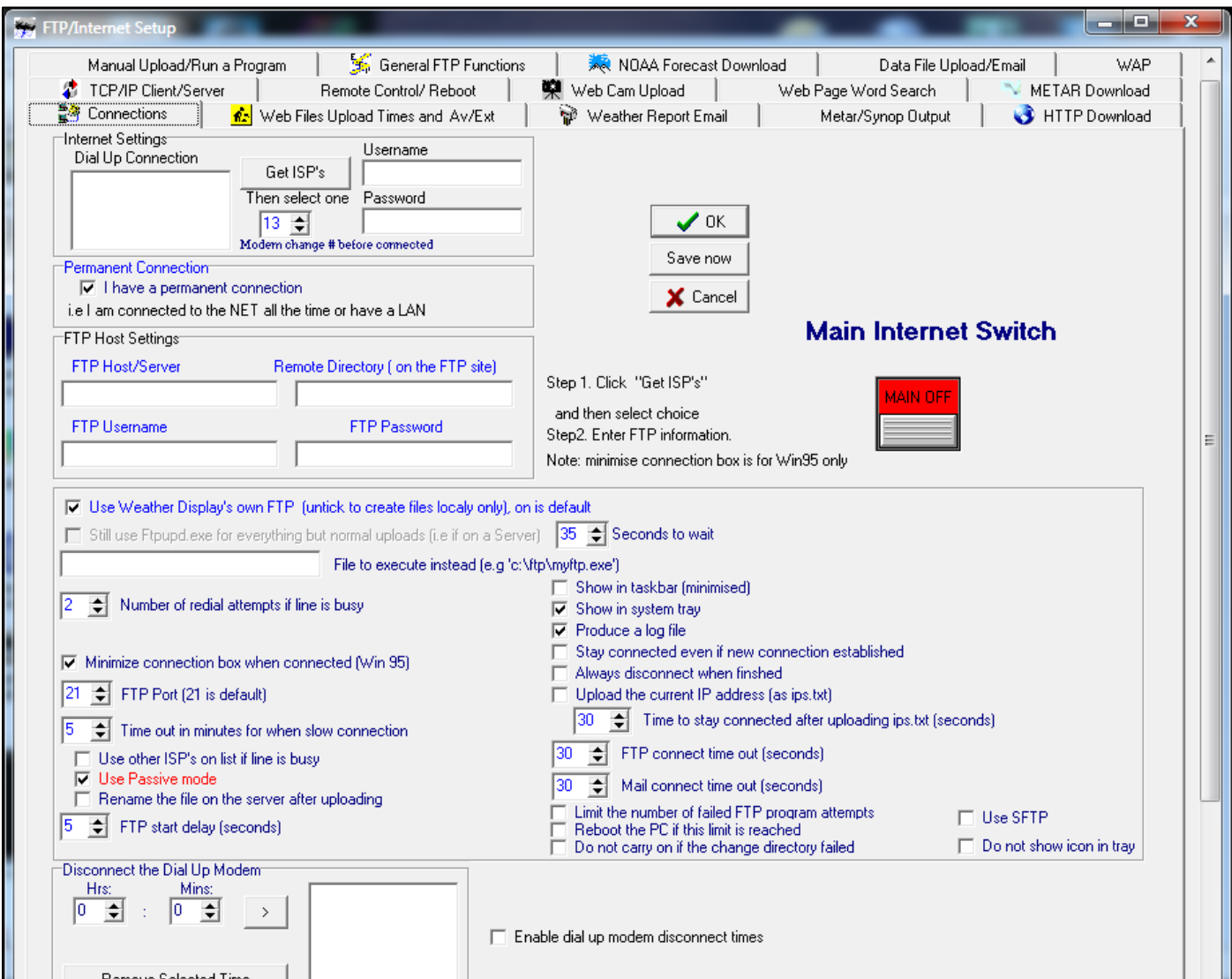
[Click here for a list of the last weather stations received recently](#)

- Under “APRS Data Send Times” click on the button that says, “Upload every 5 Minutes.” This should populate the list of times to the right. You can adjust the “Offset Minutes By” variable by a minute or two so you’re not transmitting at the top of every hour.
- Under Station ID, enter your CWOP Station ID received in Step 4.
- To populate the Lat/Lon, enter your coordinates in Degrees/Minutes/Seconds format in the box to the right, then click “Convert” to populate the main Lat/Lon fields.
- Click on the checkbox next to “Use gust last 10 minutes only.”
- Next, double-click on the red box that says “APRS Off.”
- Finally, click on the “OK” button.

Back on the Control Panel, click on the “FTP & Connections” button.



Under “Main Internet Switch,” double-click on the red area that says “Main Off.” This will turn on data uploading.



6.) Check for Data:

- Browse to the following web address, using your CWOP Station ID at the end:
<http://www.findu.com/cgi-bin/wx.cgi?call=DWxxxx>
- For example, if your Station ID was CW0958, you would enter:
<http://www.findu.com/cgi-bin/wx.cgi?call=CW0958>

Note: It may take up to 15 minutes for data to start appearing.

Also Note: The date/time stamp used on the above site is in the form YYYYMMDDhhmmss in UTC time. For example “20120402145210” means April 2, 2012 at 14:52 UTC (and 10 seconds).

7.) Let us know you're online!

- You should receive an email from CWOP asking you to check your station location and make sure your data is flowing.

8.) MesoWest/MADIS Updates:

- After being added to the data feed, within a week your station's data should start showing up on web sites such as MesoWest.
-