

Citizens Weather Observing Program (CWOP)

Configuration for *Davis Weather Link (PC)* Users

(Last updated: 10 July 2012)

1.) Gather Station Location Data

- You will need your Latitude and Longitude in degrees/minutes/seconds format , and Elevation in metres.
- See the How-To “Signing up for CWOP” for methods to obtain your station location data:

www.weather.gov/media/epz/mesonet/CWOP-SignUp.pdf

2.) Get a CWOP Station ID:

With any web browser, fill out the form at:

http://www.findu.com/citizenweather/cw_form.html

The CWOP website is a little “old-fashioned” and unpolished, and it contains far more information than the average user needs. Don’t worry about the parts of the form mentioning “Packet Checking” and “MADIS tech support.”

CITIZEN WEATHER PROGRAM REGISTRATION FORM

To obtain a DW number fill in the form below. You will receive an e-mail reply with your assigned number (similar to "DW1234").

If you have questions, please contact your software provider, or send email to [Randy at NOAA](mailto:Randy@NOAA). Several different ways to check your data packets are at [Packet Checking](#)

If you also send your weather data to another internet site, please contact [MADIS technical support](#) so they will be aware of the possibility of duplicate data.

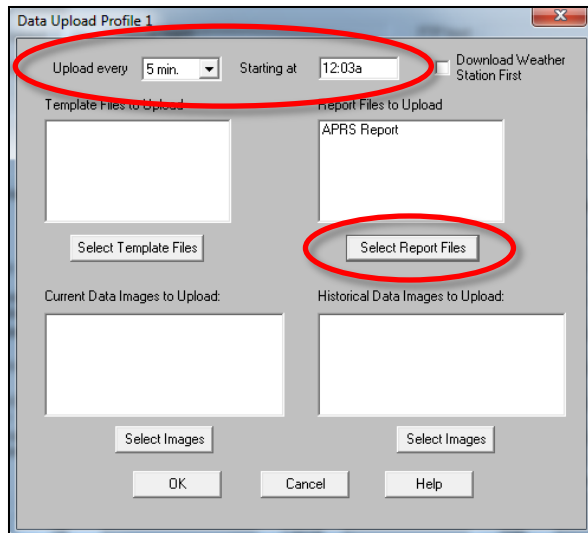
Thank you for participating in the Citizen Weather Program!

First name	<input type="text" value="John"/>
Last name	<input type="text" value="Doe"/>
email	<input type="text" value="johndoe@anonymous.net"/>
Nearby town	<input type="text" value="Hurricane"/>
State (country if outside US)	<input type="text" value="WV"/>
Zip Code (if US)	<input type="text" value="25526"/>
Elevation	<input type="text" value="215"/> (meters above sea level)

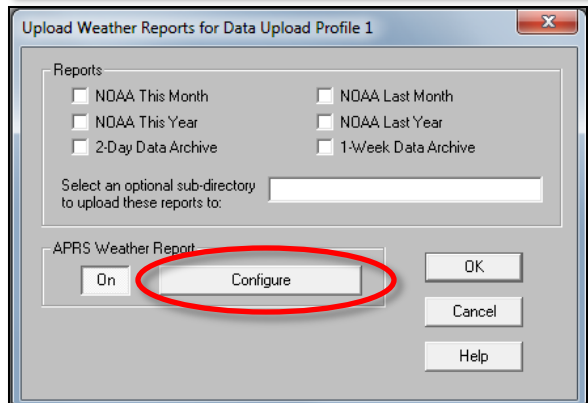
- Make sure you use a valid email address (don’t worry – no SPAM).
- If you are a business or agency, you may wish to use its name in place of “First Name” and “Last Name.” Otherwise, use whoever will be the primary contact.
- If you need help with any of these steps, or finding your location or elevation, send an email to: cwop-support@noaa.gov.

- In the **Data Upload Profile** window, set the Upload Frequency to **5 min** and the **Starting At** time to any time. (It is suggested you pick an off-minute like :03 or :07 rather than a round :05).

- Next, click the **Select Report Files** button.



- On the **Upload Weather Reports for Data Upload Profile** window, click on the **Configure** button in the **APRS Weather Report** section.

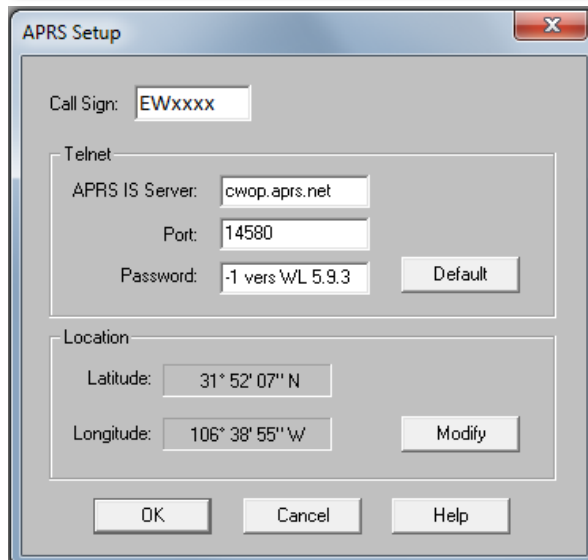


- On the **APRS Setup** Window, enter your CWOP Station ID under the **Call Sign** section. Leave the Telnet section set to the default.

- Click the **Modify** button in the **Location** section.

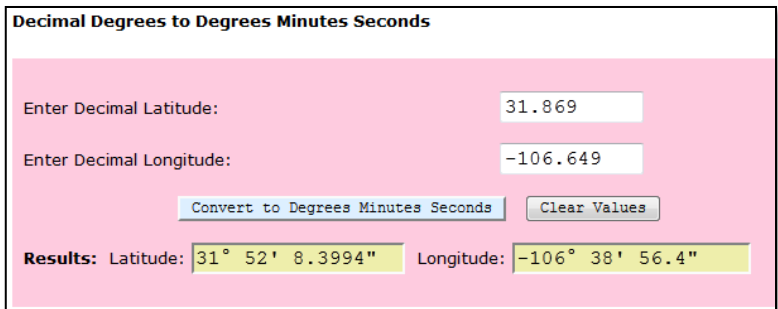
- If you have your station location in Decimal Degrees, you'll need to convert it to Degrees/Minutes/Seconds.

- You can quickly convert your location coordinates using this web site:



<http://transition.fcc.gov/mb/audio/bickel/DDDMSS-decimal.html/>

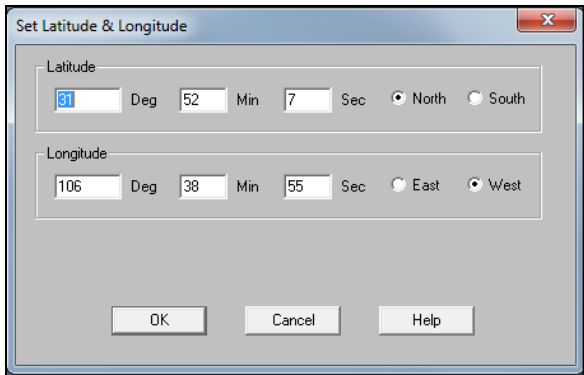
- On the conversion webpage, enter your decimal Latitude and Longitude in the pink box, then click **Convert**.



- Make note of the results, ignoring the decimal seconds.

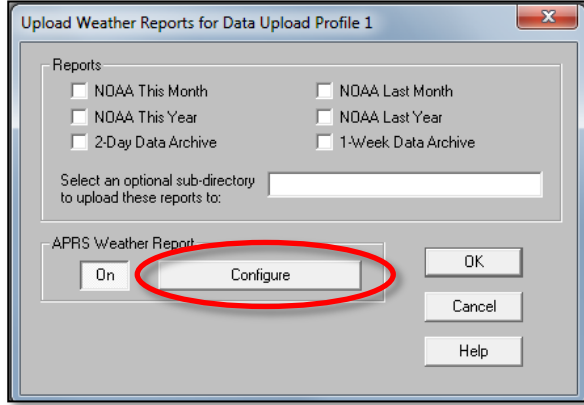
- So in this example, make note of 31° 52' 08\"/>

- Back in the **Set Latitude & Longitude** window, enter your converted coordinates. Leave out the “-” sign in the longitude. Select “North” for Latitude, and “West” for Longitude, assuming you’re in North America. Click **OK**.



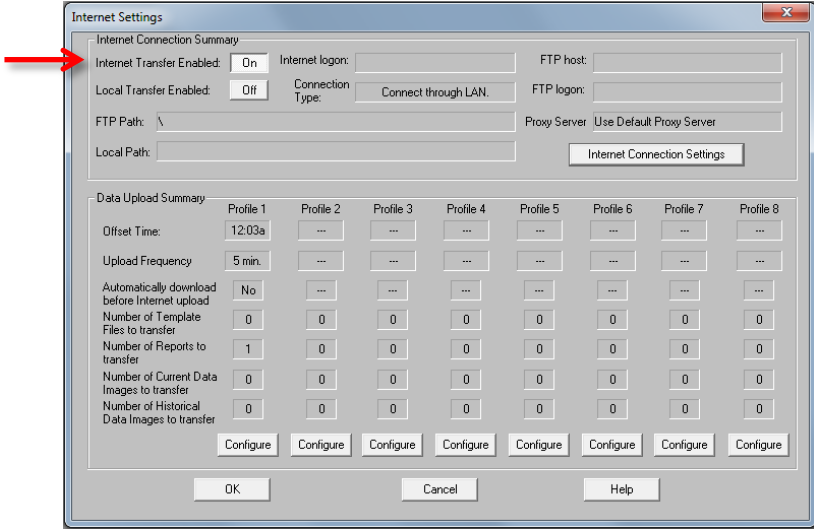
- Then Click **OK** in the **APRS Setup** window.

- Then in the **Upload Weather Reports** window, in the **APRS Weather Report** section, click on the **On** button. Then click **OK**.



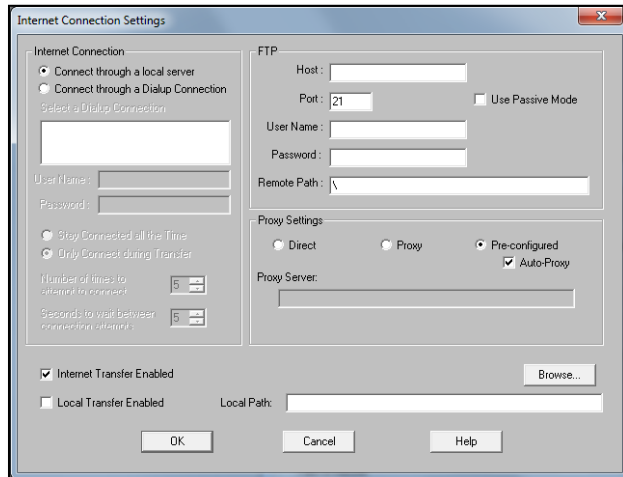
- Back in the **Data Upload Profile** window, click on **OK**.

- Back in the **Internet Settings** window, click the button next to **Internet Transfer Enabled** so it reads, “**On**”.

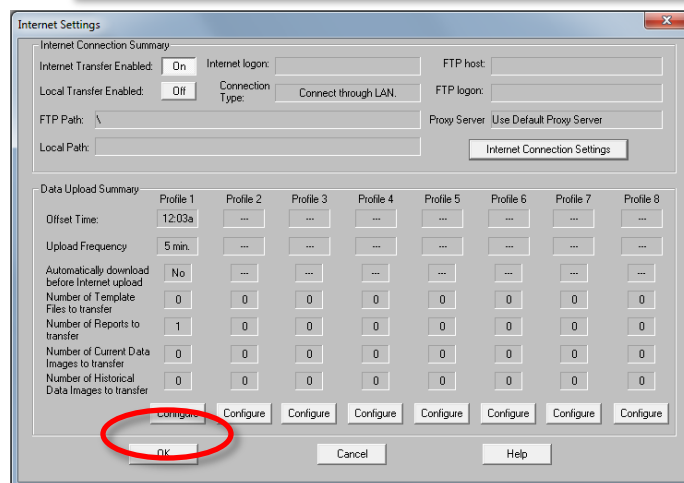


- Next, click on the **Internet Connection Settings** button.

- In the **Internet Connection Settings** window, click on the **Internet Transfer Enabled** checkbox in the bottom-left corner, then click **OK**.



- Finally, back in the **Internet Settings** window, click on **“OK.”**



4.) Check for Data:

- Browse to the following web address, using your CWOP Station ID at the end:
http://www.findu.com/cgi-bin/wx.cgi?call=YOUR_CWOP_ID_HERE
- For example, if your Station ID was CW0958, you would enter:
<http://www.findu.com/cgi-bin/wx.cgi?call=CW0958>

Note: It may take up to 10 minutes for data to start appearing.

Also Note: The date/time stamp used on the above site is in the form YYYYMMDDhhmmss in UTC time. For example “20120402145210” means April 2, 2012 at 14:52 UTC (+10 sec).

5.) Let us know you’re online!

- You should receive an email from CWOP asking you to check your station location and make sure your data is flowing.

6.) MesoWest/MADIS Updates:

- These two data aggregators usually update their station tables on a weekly basis (usually Wednesdays). After several days, data from your station should begin showing up on plots at MesoWest:

<http://mesowest.utah.edu/cgi-bin/droman/mesomap.cgi?state=NM&rawsflag=3>