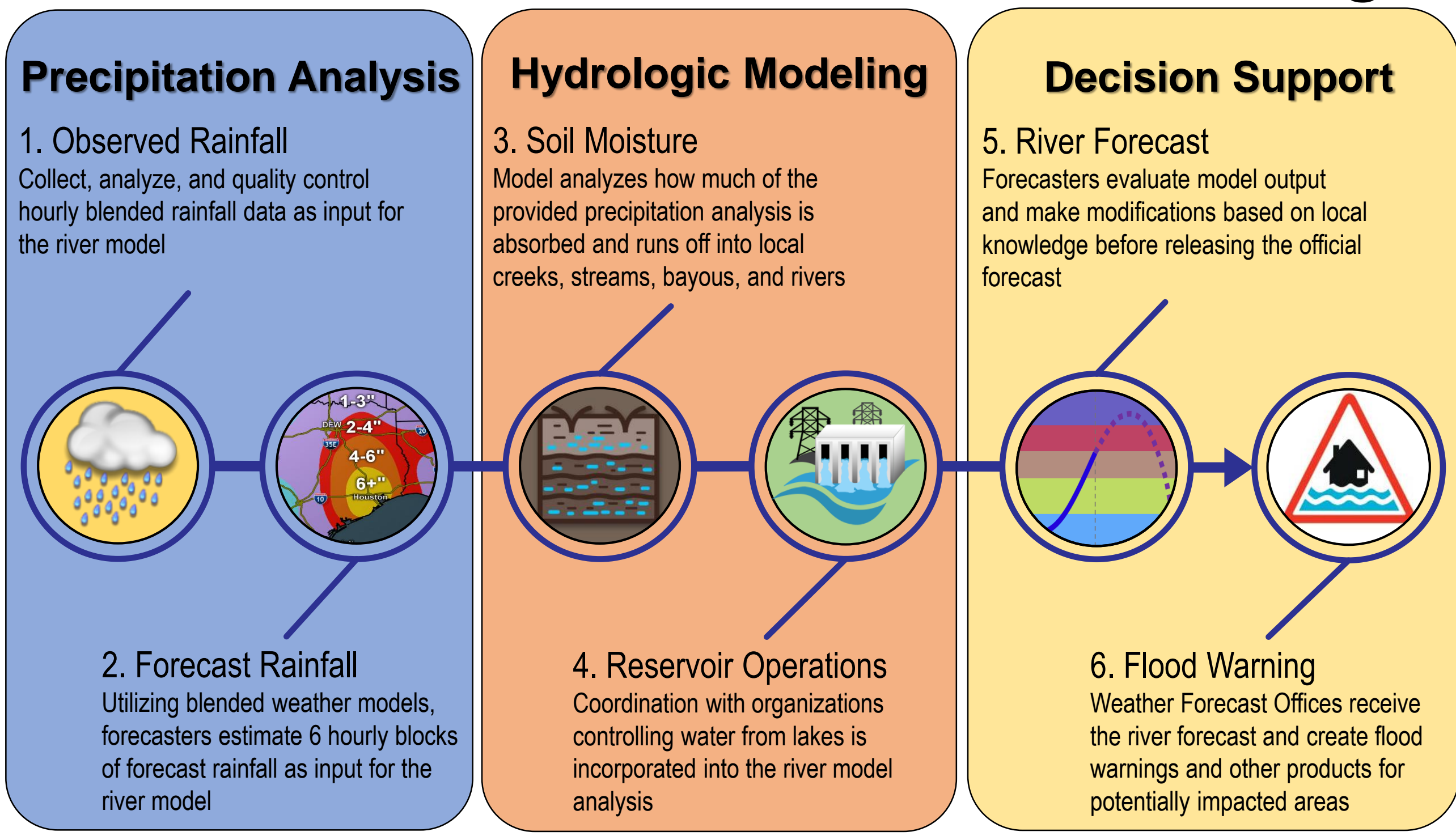
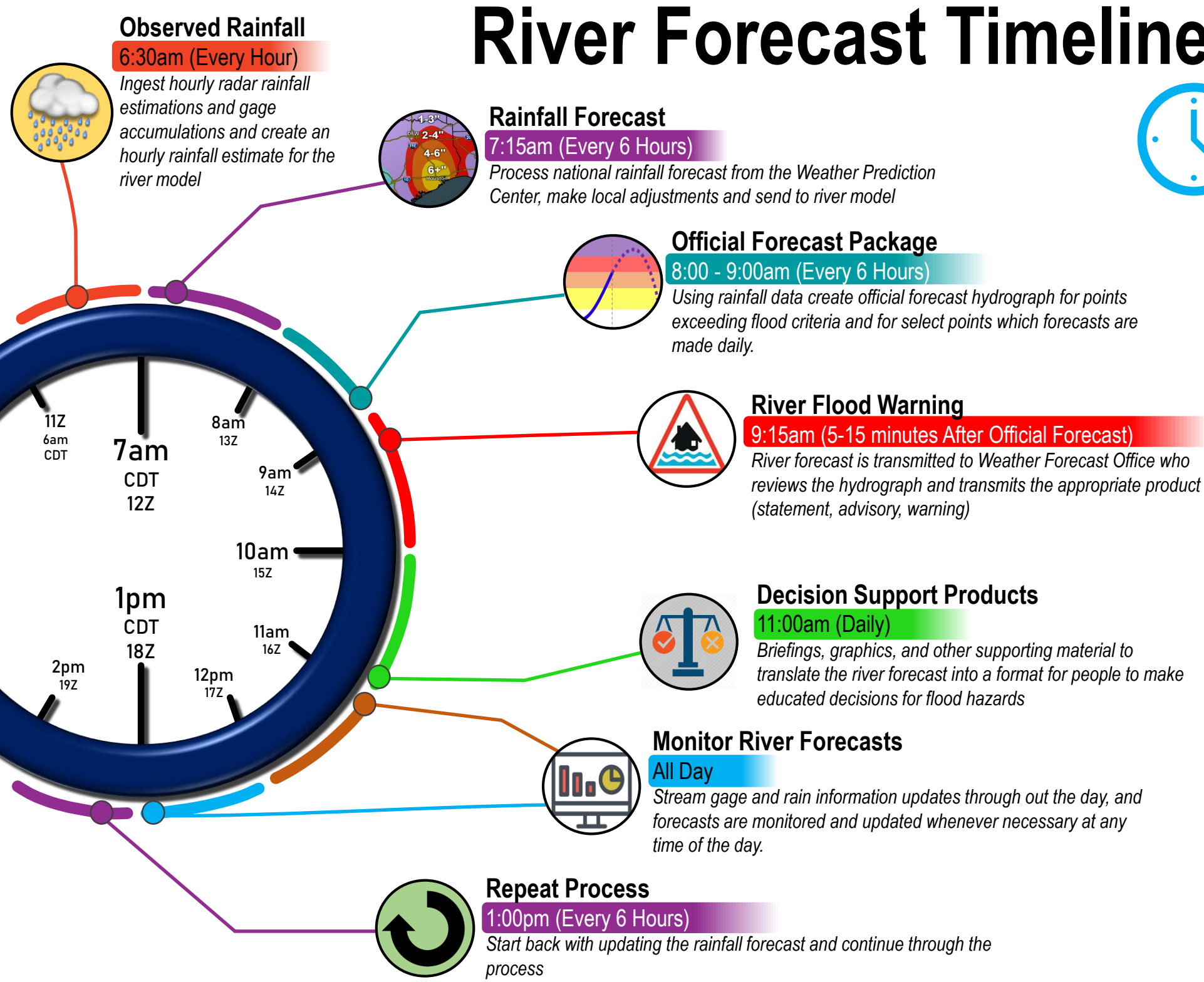


What Goes into a River Flood Warning?



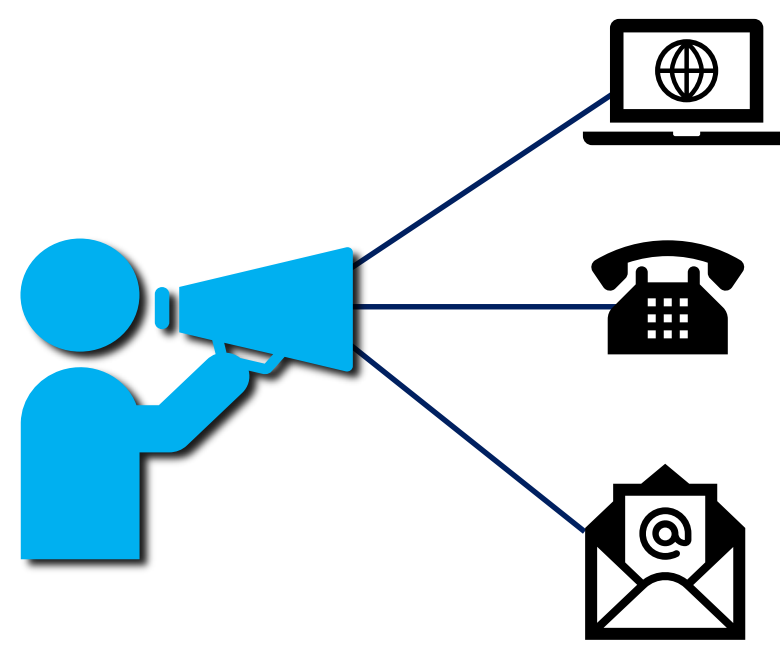
River Forecast Timeline



Operational Hours

Standard Operations
6:00am – 10:00pm
No updates between 10pm and 6am

Extended Operations
When rainfall conditions warrant monitoring between 10pm – 6am the river forecast center will extend hours and perform updates during this time



NWS Chat
Don't have an account?? If not register at <https://nwschat.weather.gov/> and get access. If registered, go into ewxchat and provide your flood report to the IWT community

Phone
Report flooding impacts directly to the Austin/San Antonio office by calling (830) 629-0130

E-Mail
Send in your reports to the office email account at sr-ewx.webmaster@noaa.gov