

# National Weather Service (Atlanta)

January 16, 2026  
1:28 PM EST

Disclaimer: The information contained in this briefing is time sensitive which should be taken into consideration while viewing.



## Special Weather Briefing

For Potential Winter Weather - Sunday (1/18/26)

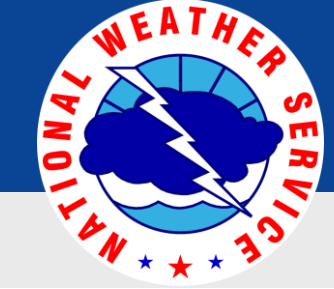
Valid: 2:00 PM Friday (1/16/26)  
by NWS Peachtree City/Atlanta



National Oceanic and  
Atmospheric Administration  
U.S. Department of Commerce

National Weather Service  
Atlanta / Peachtree City, GA





# Main Points / Headlines

January 16, 2026

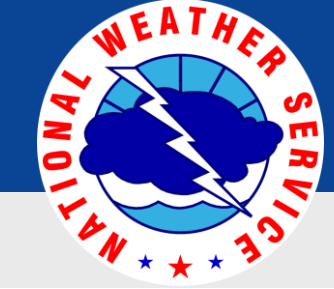
1:28 PM EST

Late Saturday night/Sunday through Monday morning (1/18-19)

- **The threat for wintry precip has shifted south and east for Sunday.**
  - Greatest risk area is now south/east of Columbus to Griffin to Madison.
  - Areas north/west of I-85 looking at very minimal (if any) impacts
- **Where snow does occur... temperatures during day (Sunday) are trending >32F during precipitation, resulting in some melting but also a narrow area of heavy/wet snow on the backside of the precip shield.**
  - General accumulations up to 1" possible
  - Very low chance to see max snow accumulations of 2-3" in a narrow band
- **Temperatures Sunday night/Monday morning expected to drop well into the 20s everywhere – likely resulting in icy/slick areas (black ice)**



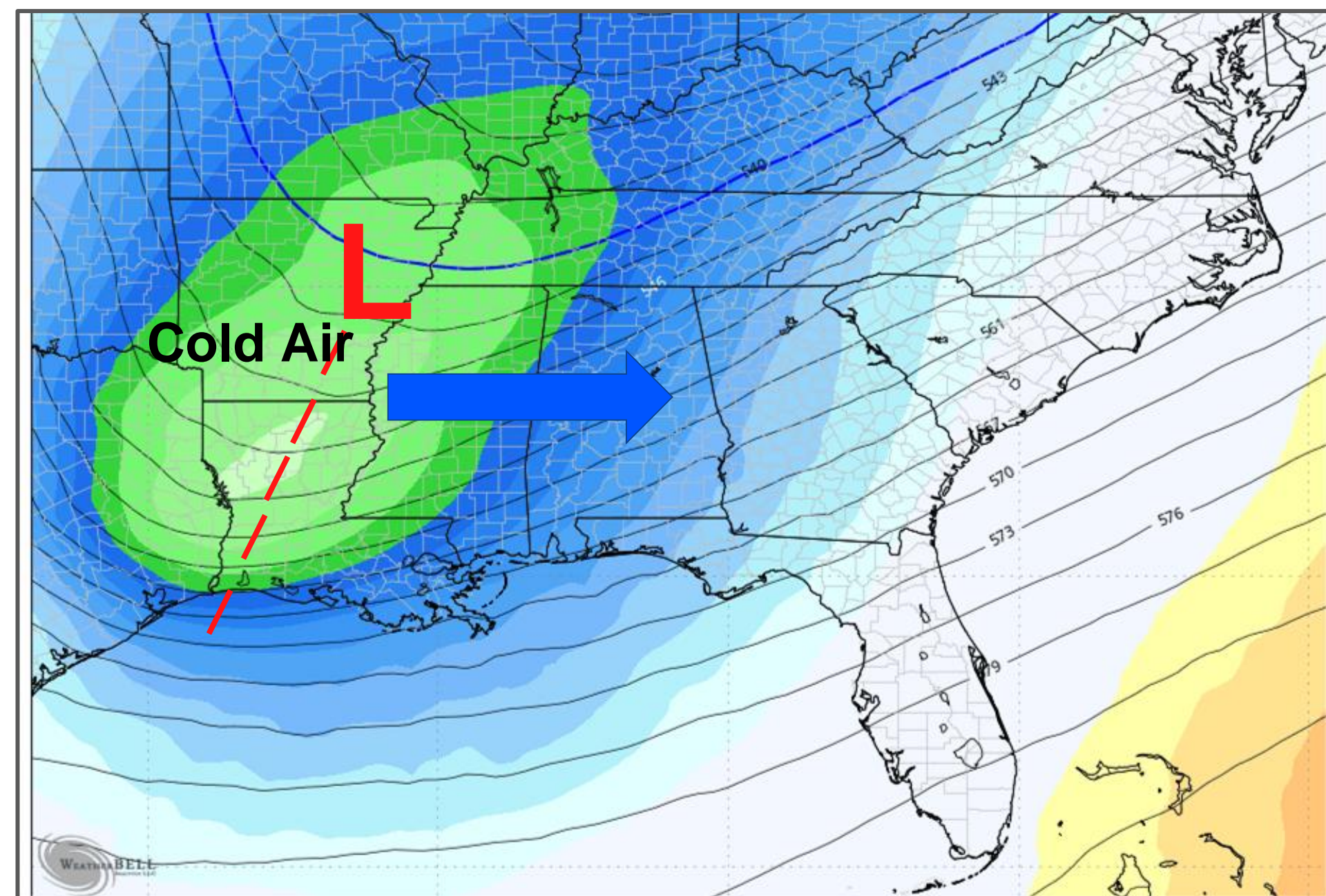




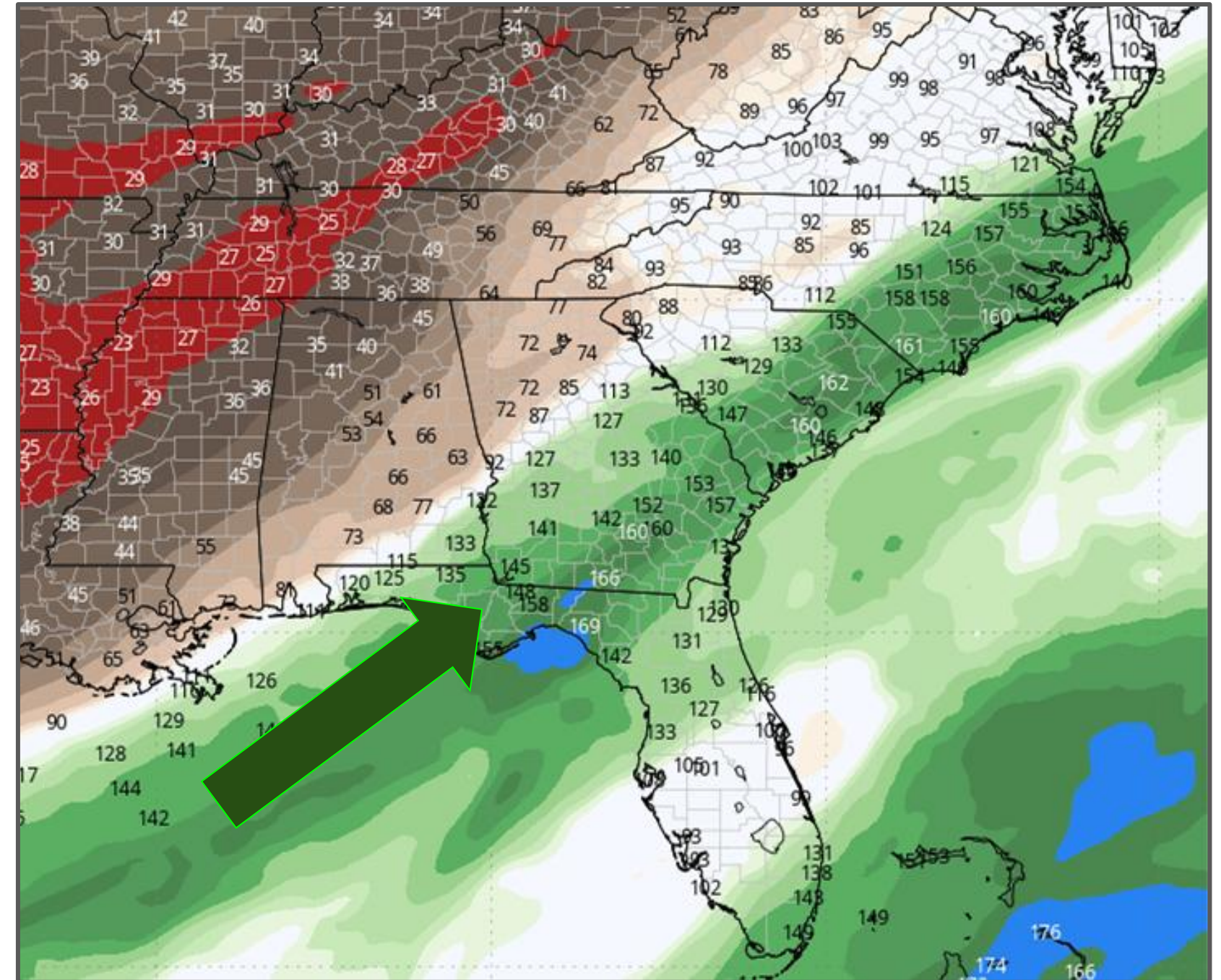
# Weather Pattern / Set-up

January 16, 2026  
1:28 PM EST

This weekend into early Monday



An upper level trough with very cold air will move across the area (Sun-Mon)



Relatively warm/moist air will move in from the Gulf creating an “overrunning” precipitation event along and ahead of the upper trough



National Oceanic and  
Atmospheric Administration  
U.S. Department of Commerce

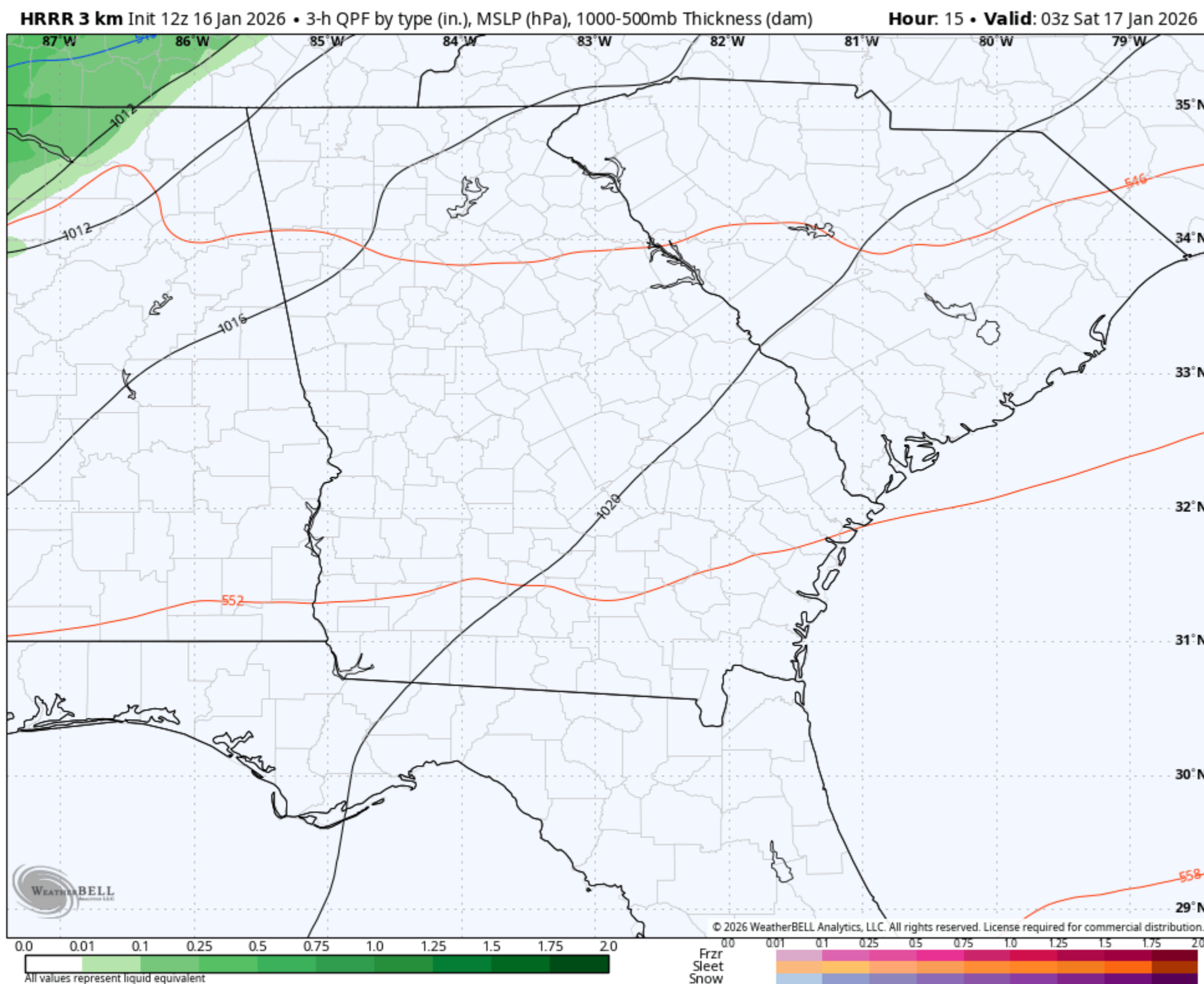
National Weather Service  
Atlanta / Peachtree City, GA





# Tonight - Sat morning

January 16, 2026  
1:28 PM EST



- Fast-moving system will bring a few hours of light rain to the area (lesser amounts south/east)
- Brief 'wintry mix' possible in the highest of elevations of far north GA
  - No major / widespread impacts
  - A few slick spots as temps drop close to 32F late tonight.



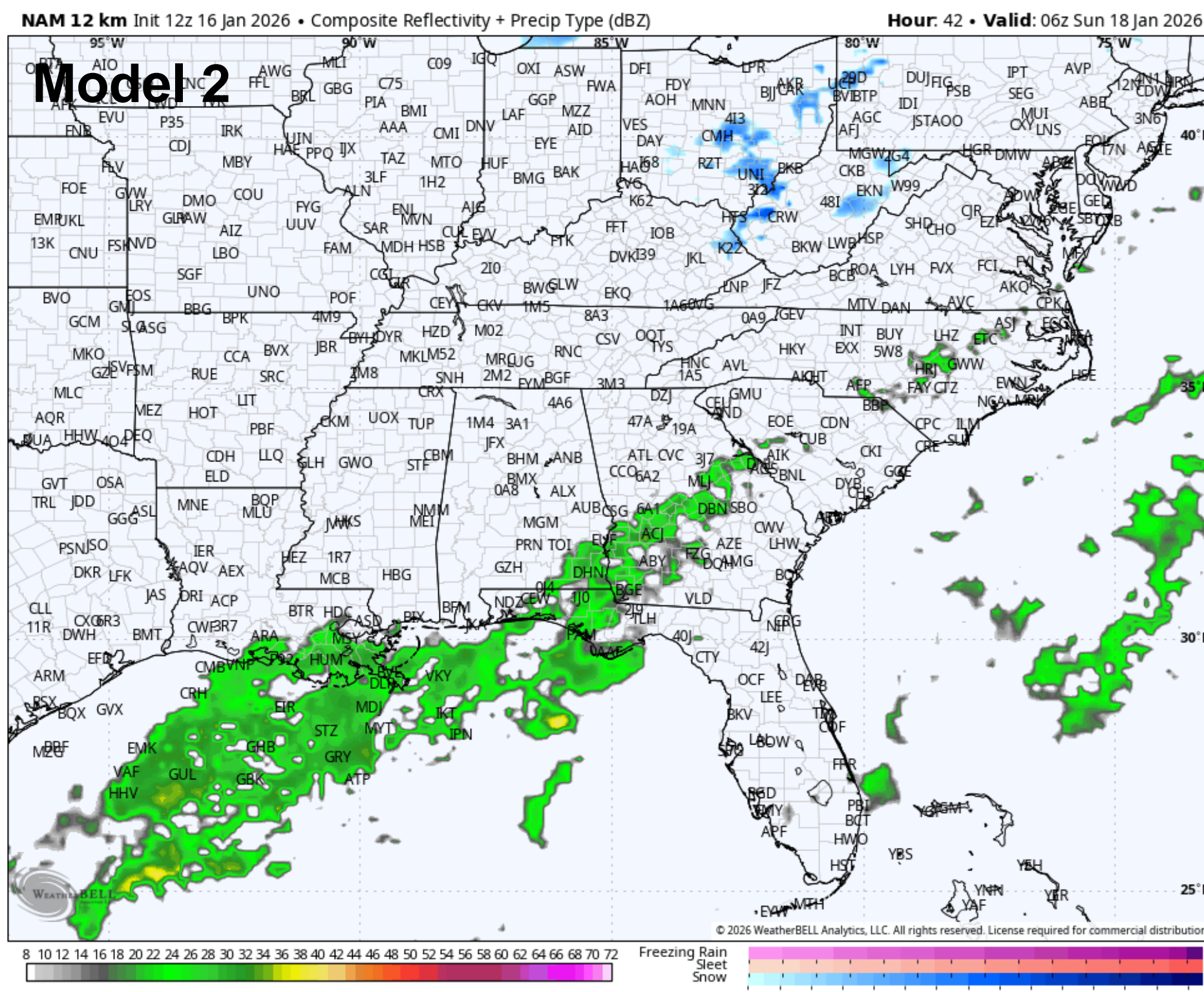
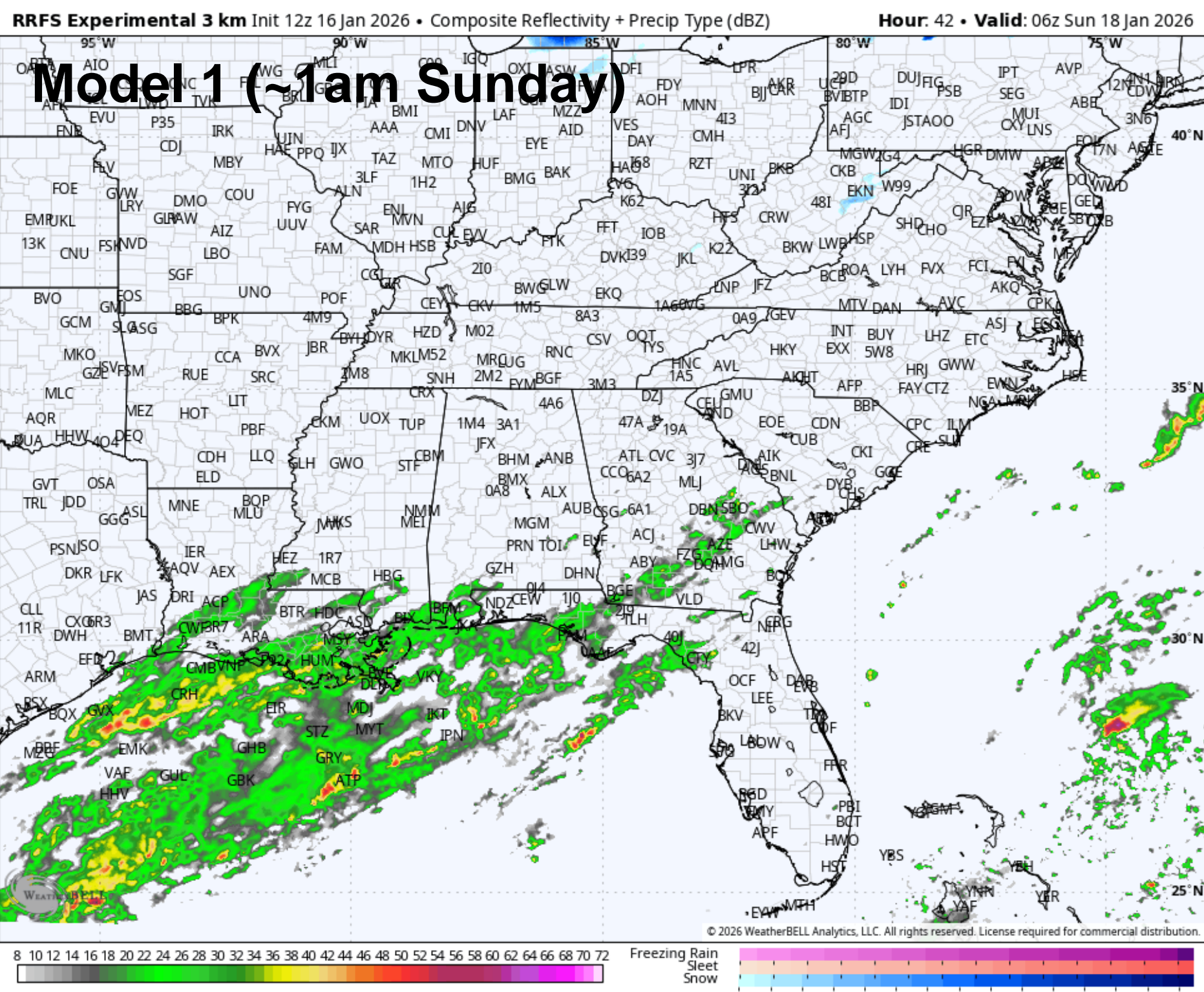




# Winter precip timing (early/onset)

January 16, 2026  
1:28 PM EST

Saturday night / Sunday morning ~1am to 10am



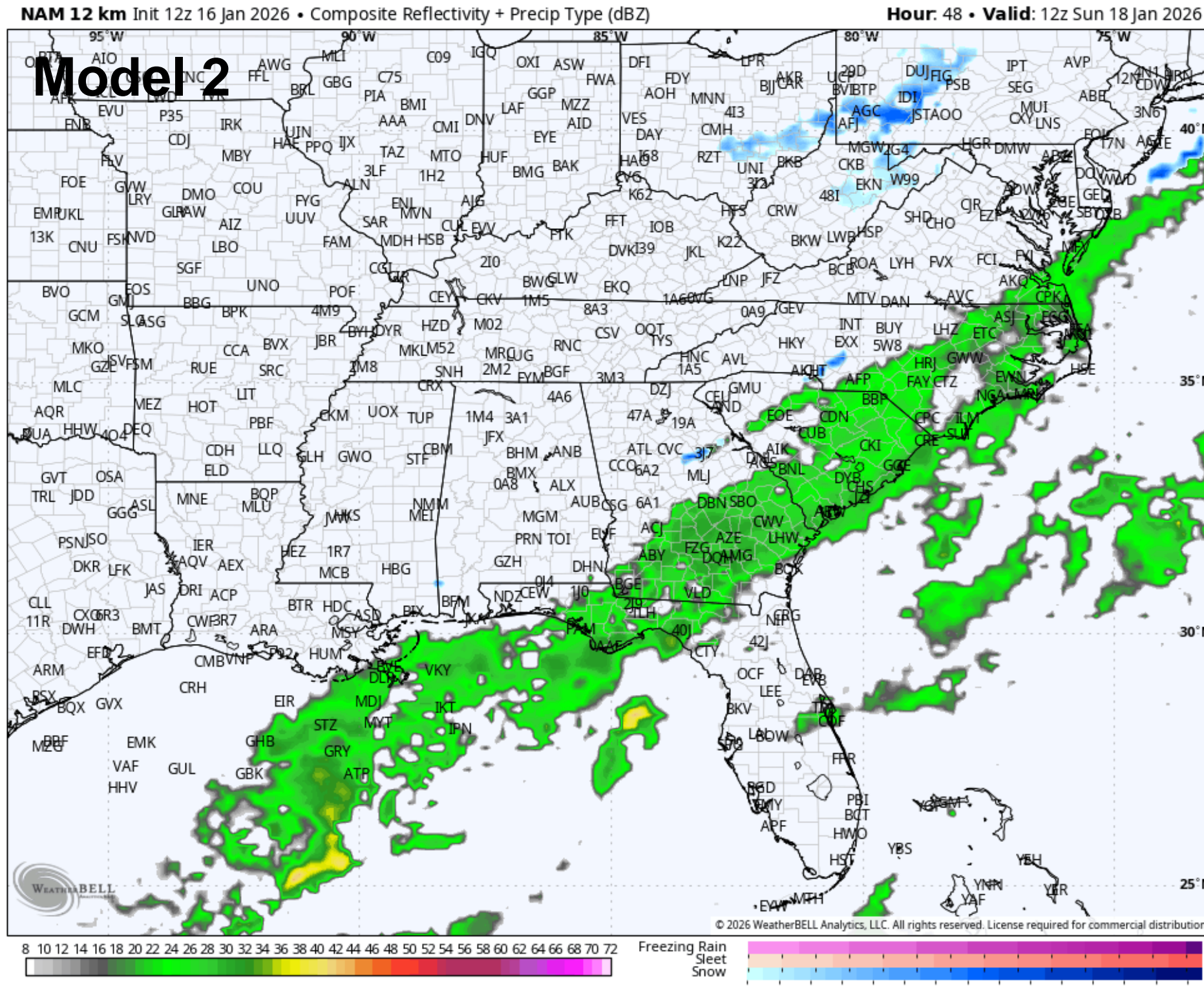
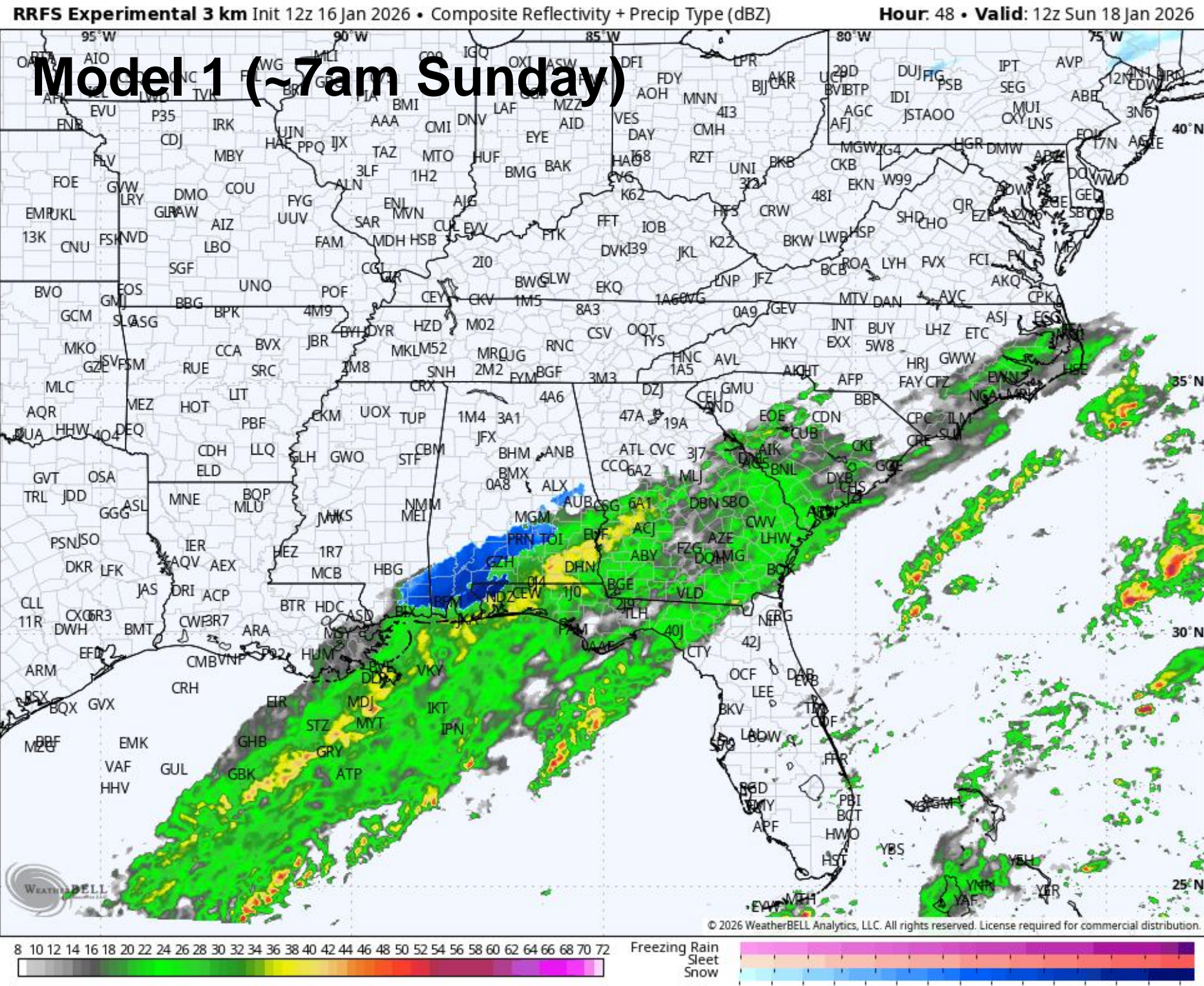




# Winter precip timing (early/onset)

January 16, 2026  
1:28 PM EST

Saturday night / Sunday ~1am to 1pm



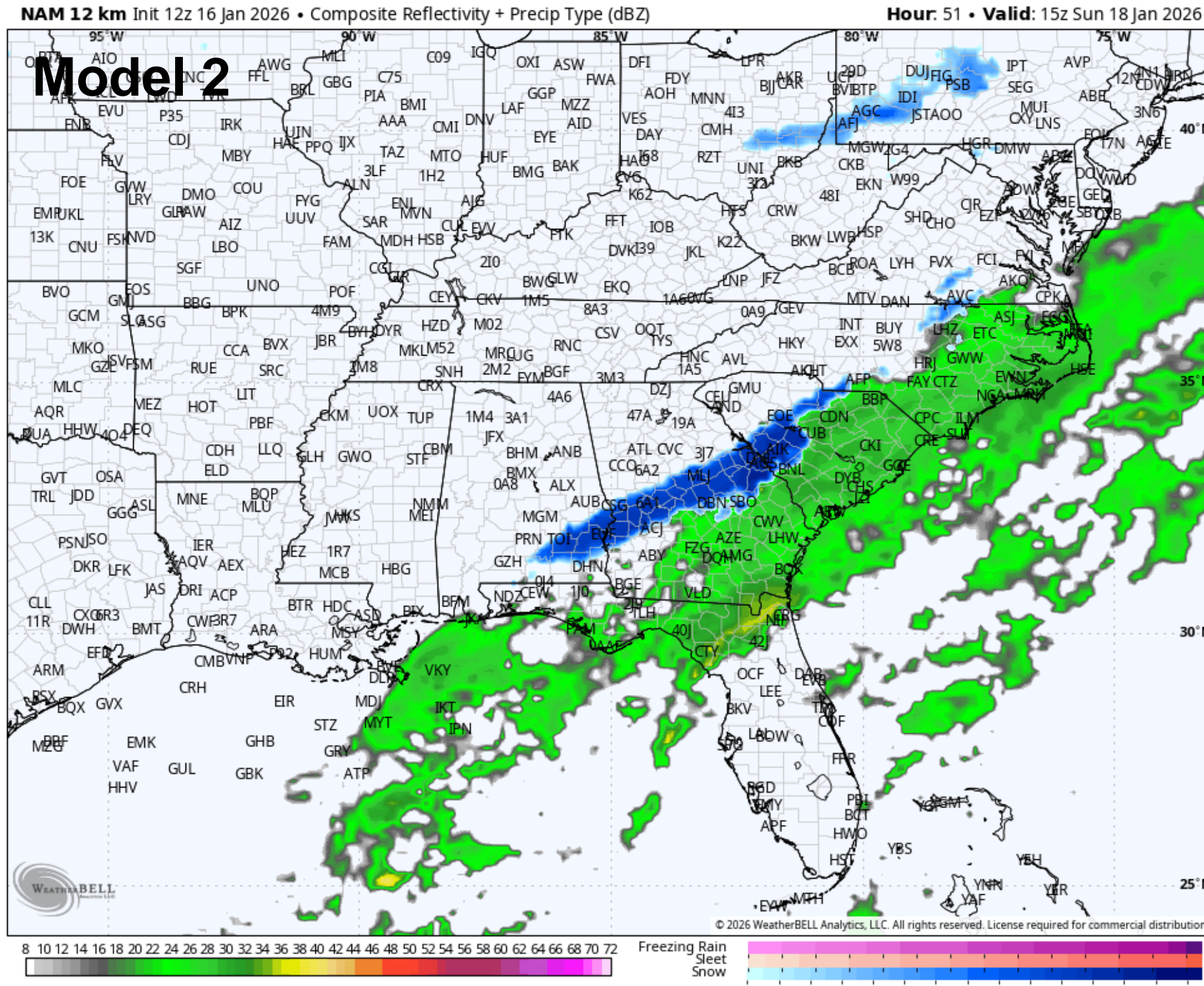
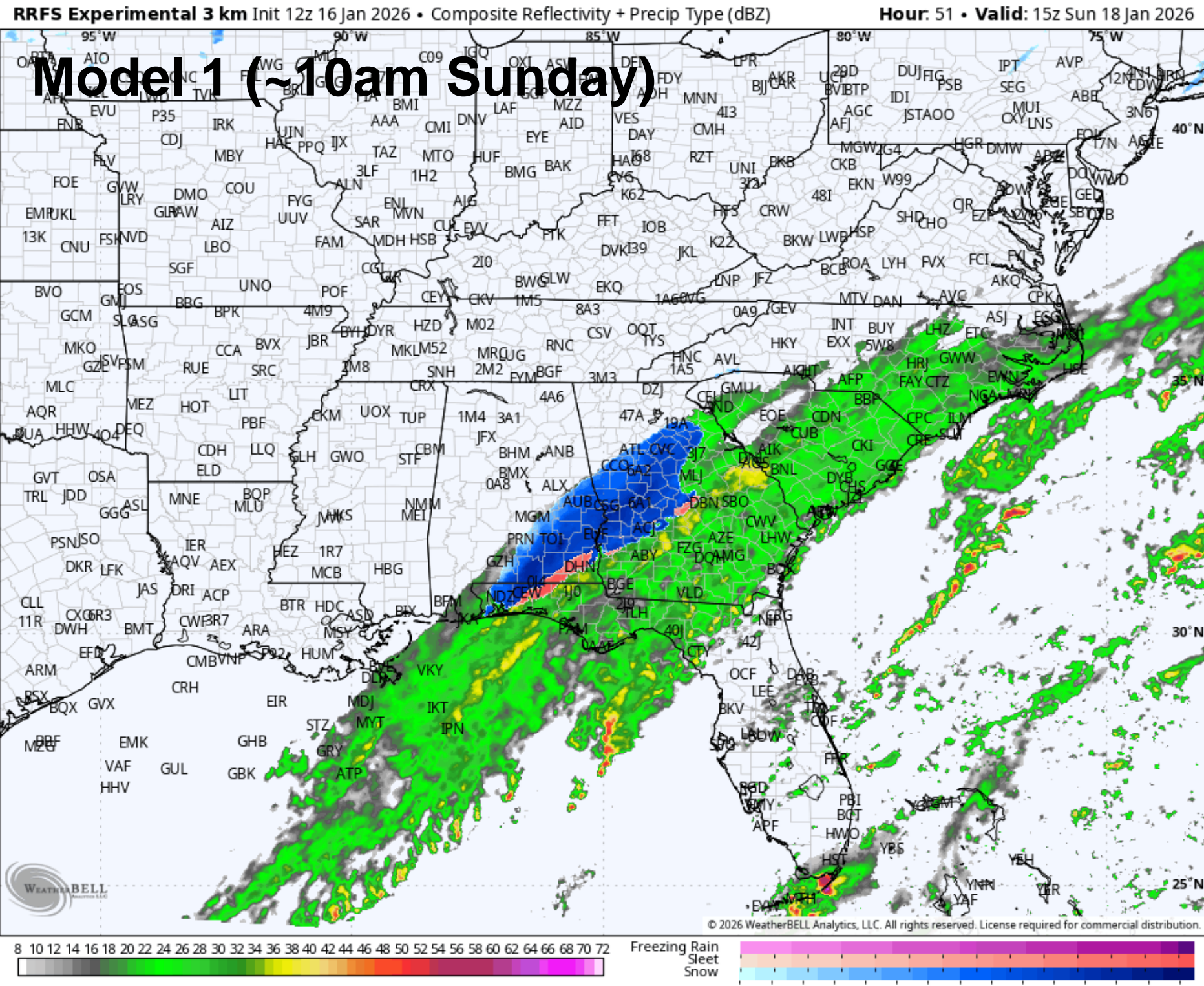




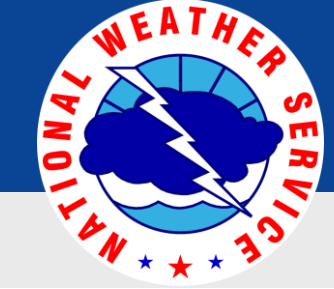
# Winter precip timing

January 16, 2026  
1:28 PM EST

Sunday (~7am to 7pm)



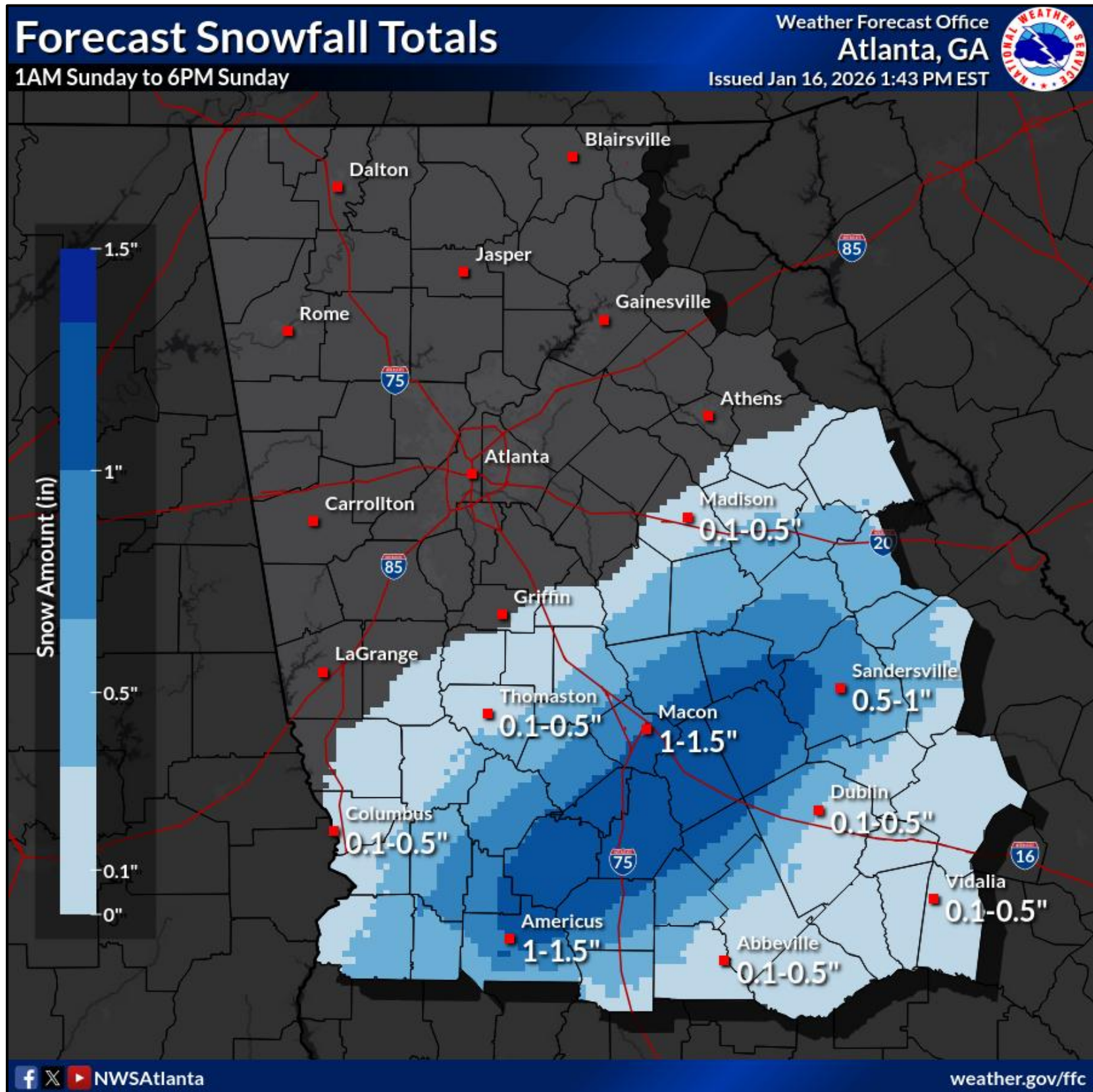




# Snow Forecast (NWS)

January 16, 2026  
1:28 PM EST

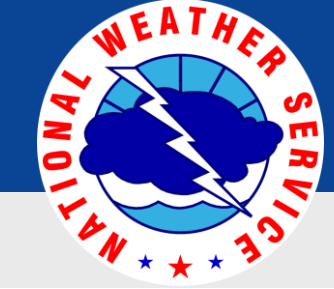
Sunday (1/18/26)



- Latest Snow forecast (from NWS)...
- Keep in mind, this will change and could pivot back to the west & north as newer information comes in
- This along with probabilities and “higher end” amounts are available on our NWS Atlanta Winter page:  
[www.weather.gov/ffc/winter](http://www.weather.gov/ffc/winter)



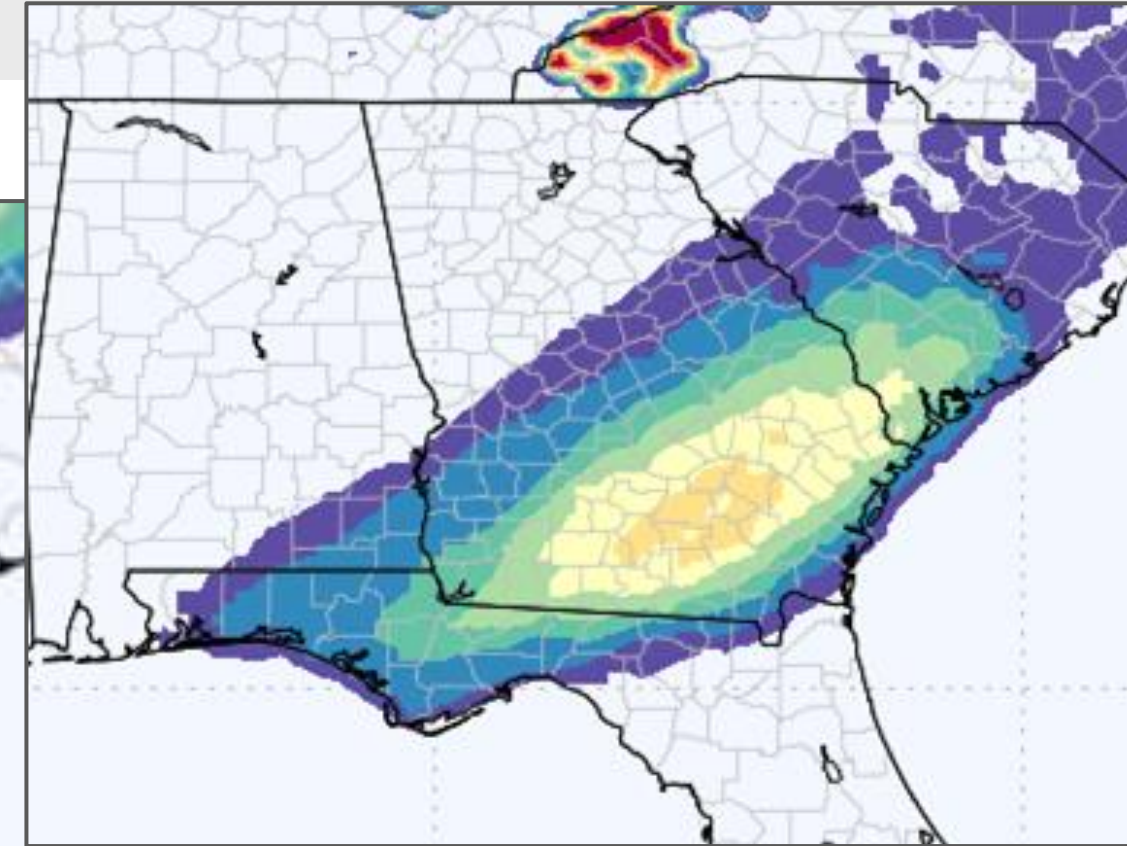
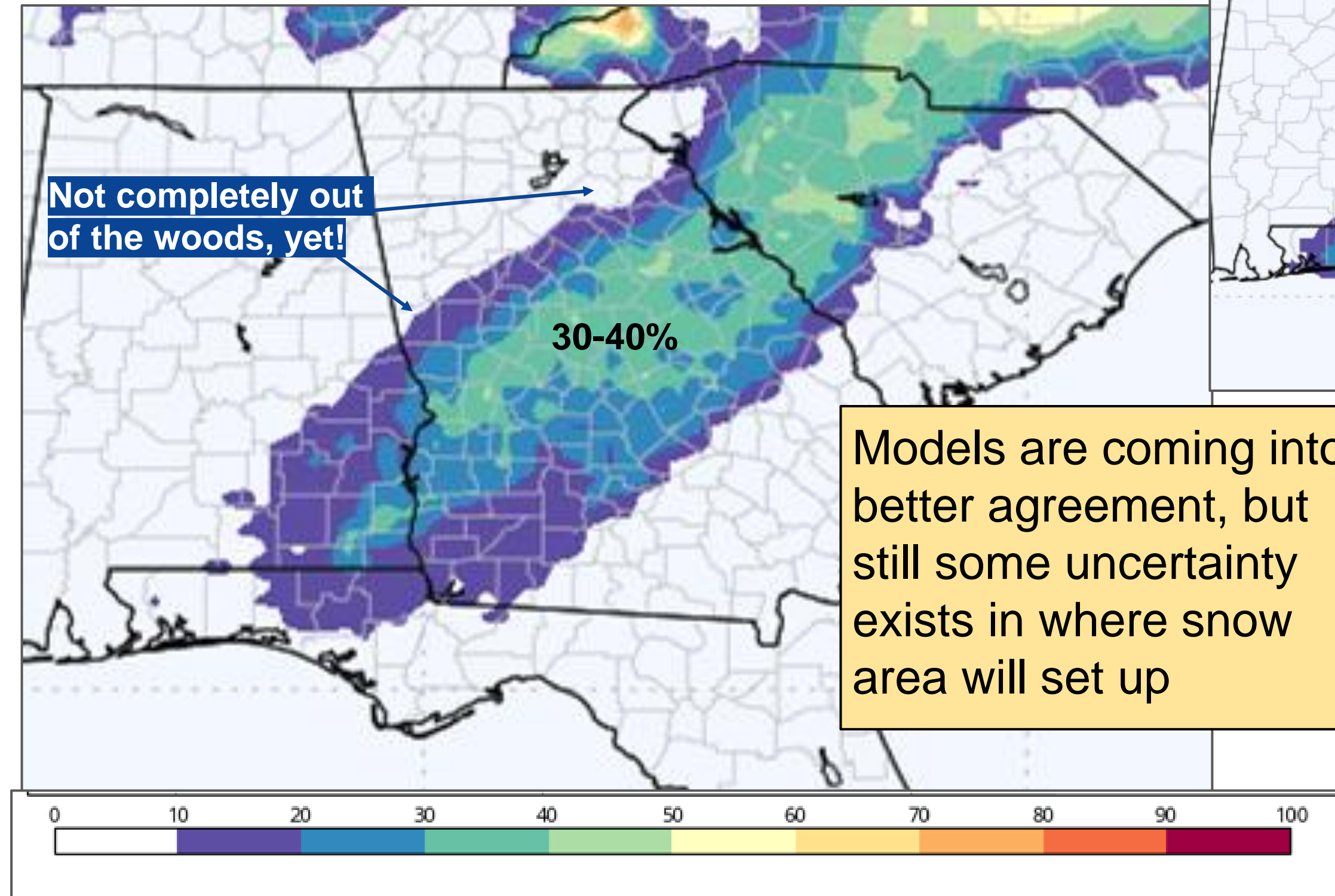




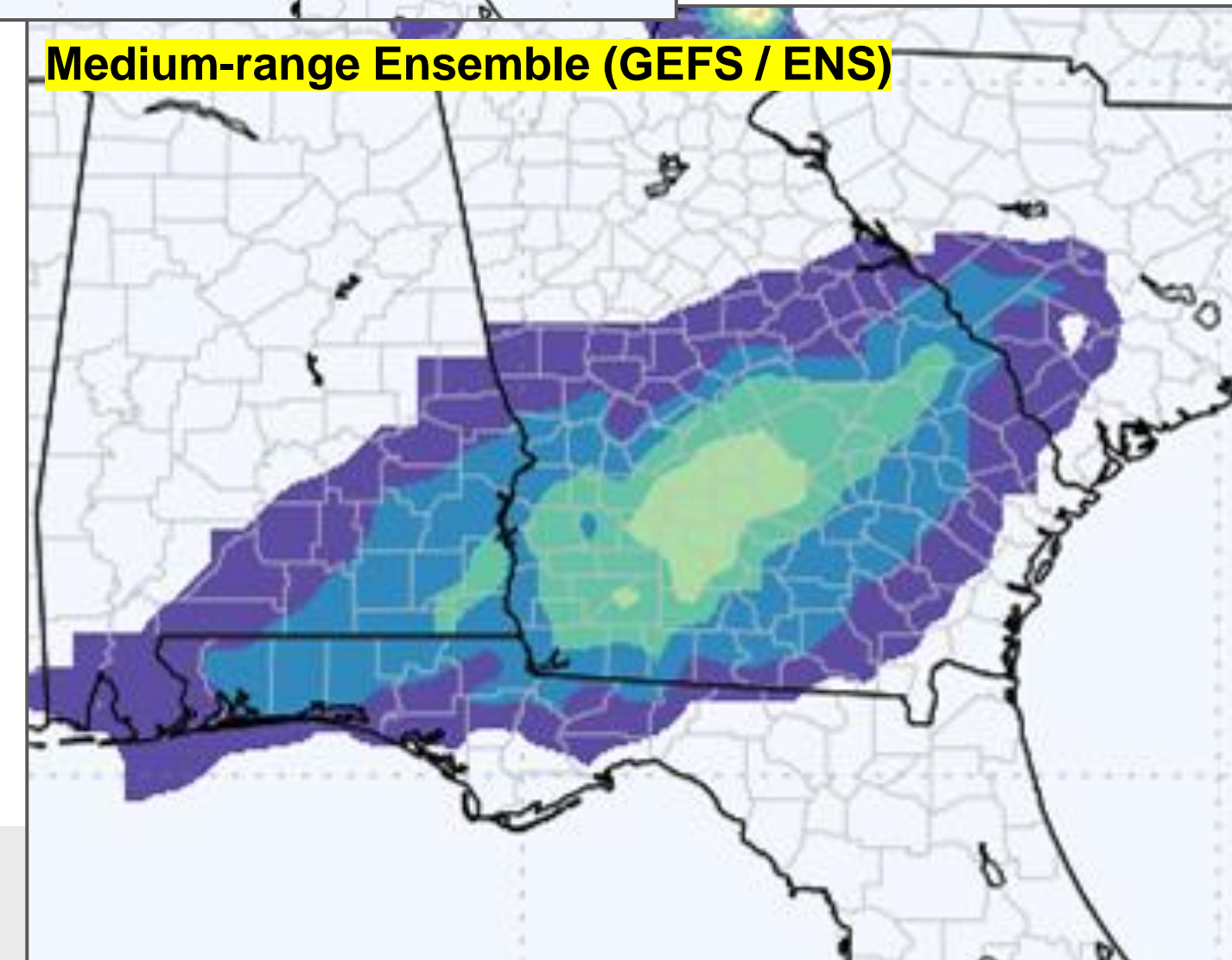
# Snow probabilities > 1 inch

January 16, 2026  
1:28 PM EST

Short-range Ensemble (10 members) Models (15z/Jan16)



Medium-range Ensemble (GEFS / ENS)







# Sunday, January 18th



**National Oceanic and  
Atmospheric Administration**  
U.S. Department of Commerce

**National Weather Service  
Atlanta / Peachtree City, GA**





# Temperatures

Saturday night through Monday

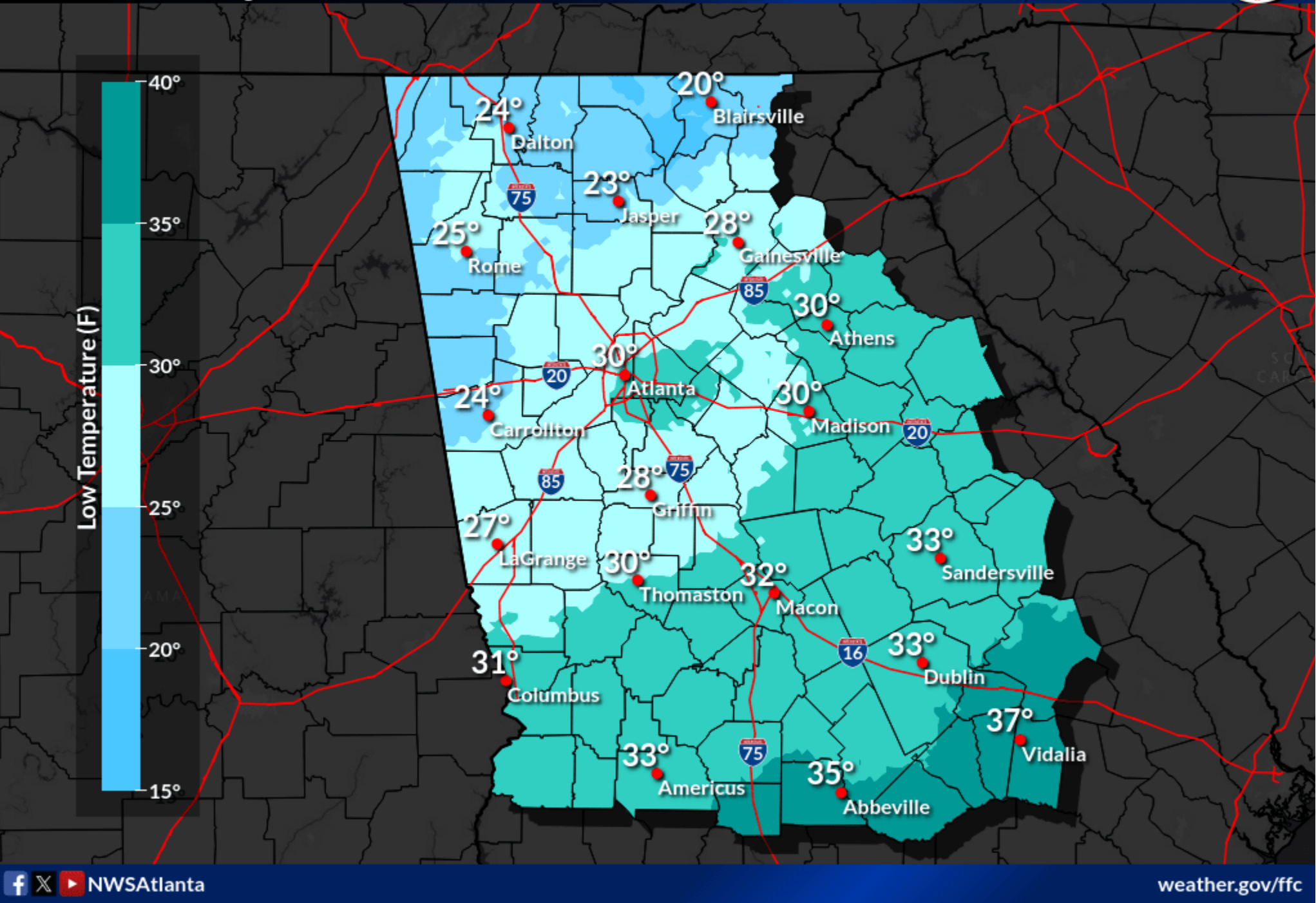
January 16, 2026  
1:28 PM EST

## Tomorrow Night's Low Temperature

Valid Sat 8:00PM through Sun 9:00AM EST

Weather Forecast Office  
Atlanta, GA

Issued Jan 16, 2026 6:35 AM EST

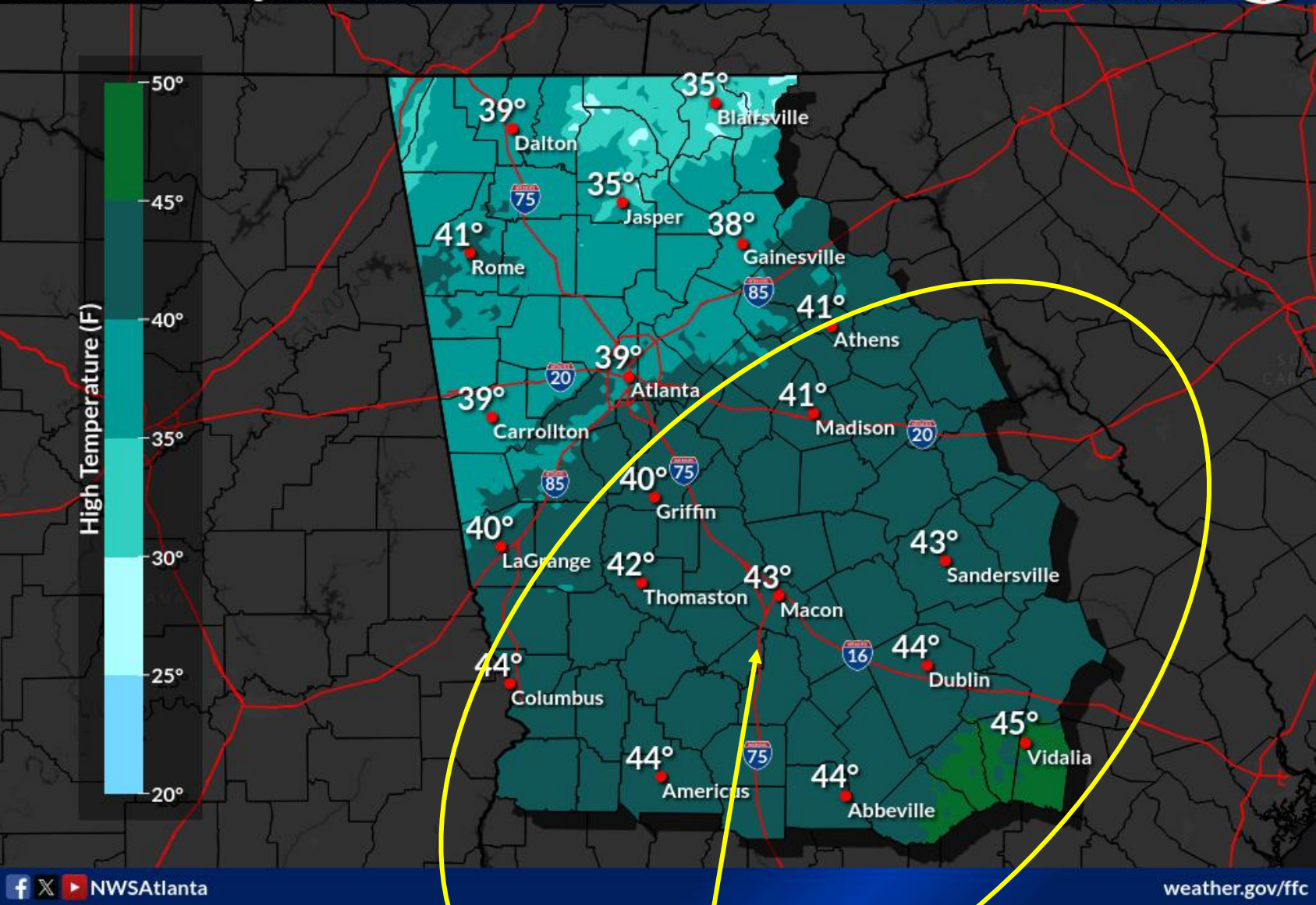


## High Temperature Sunday

Valid Sun 8:00AM through Sun 8:00PM EST

Weather Forecast Office  
Atlanta, GA

Issued Jan 16, 2026 6:35 AM EST



Max Temperatures could be several degrees colder during rain/snow period



National Oceanic and  
Atmospheric Administration  
U.S. Department of Commerce

National Weather Service  
Atlanta / Peachtree City, GA

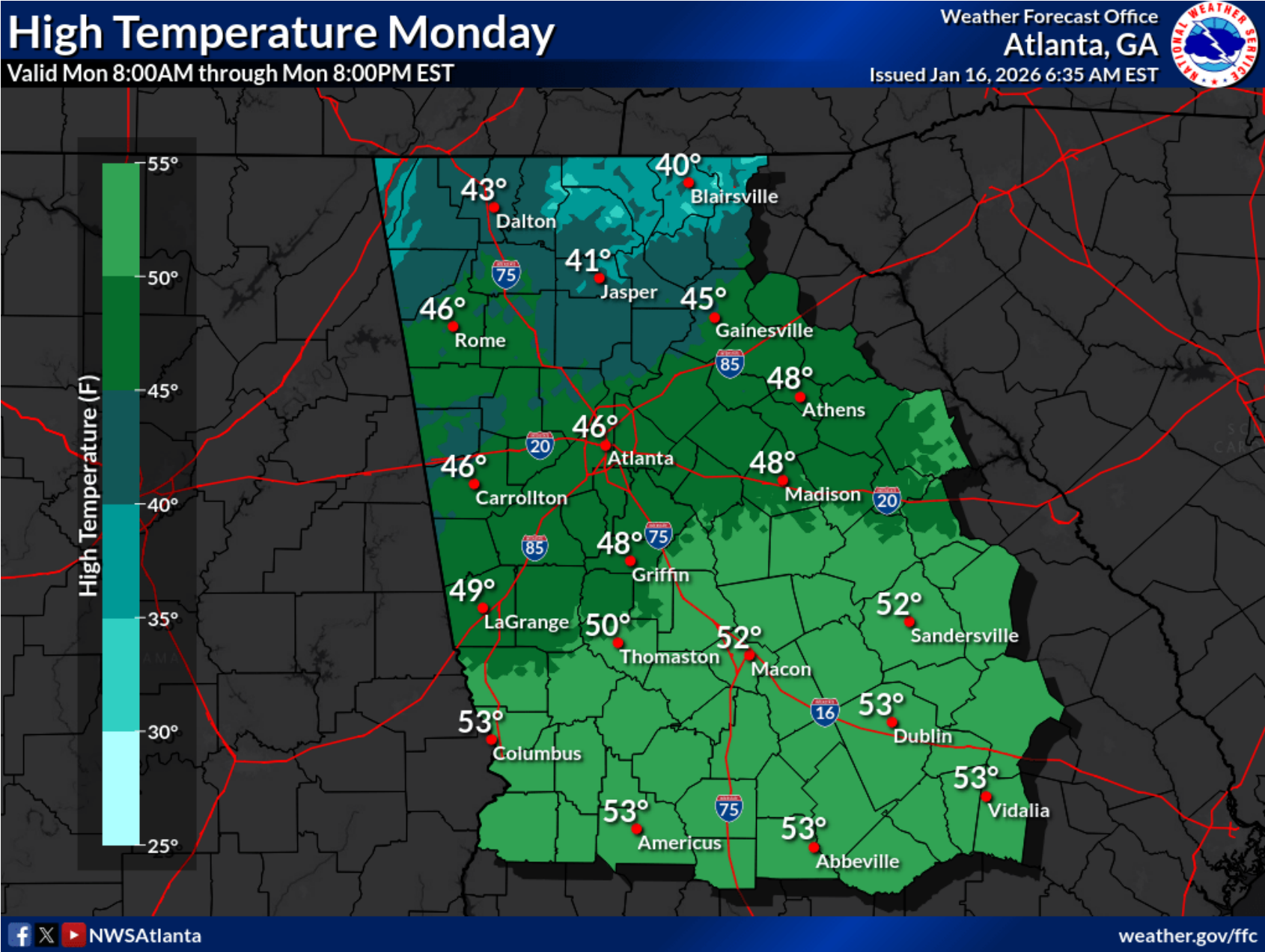
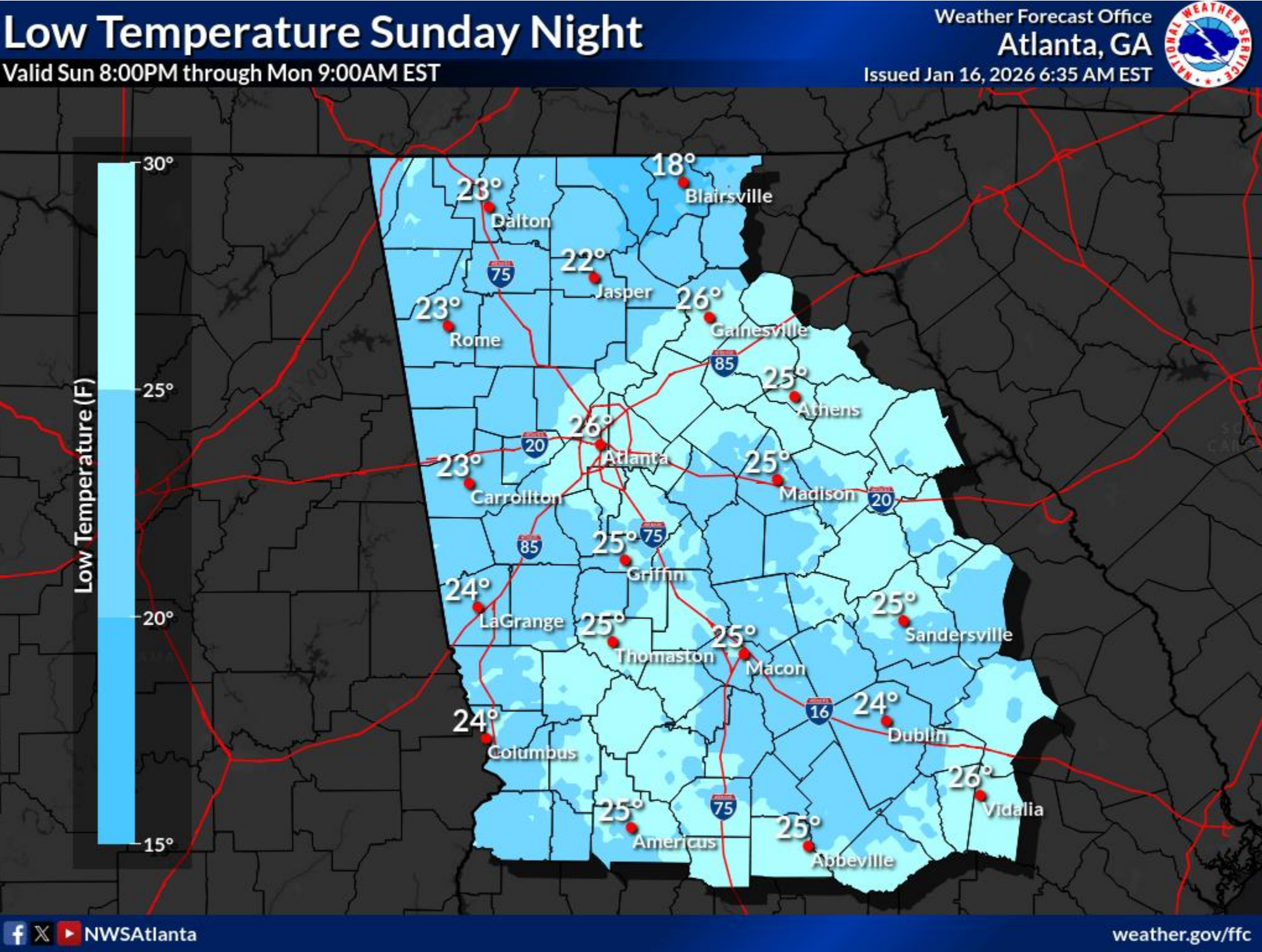




# Temperatures

Saturday night through Monday

January 16, 2026  
1:28 PM EST



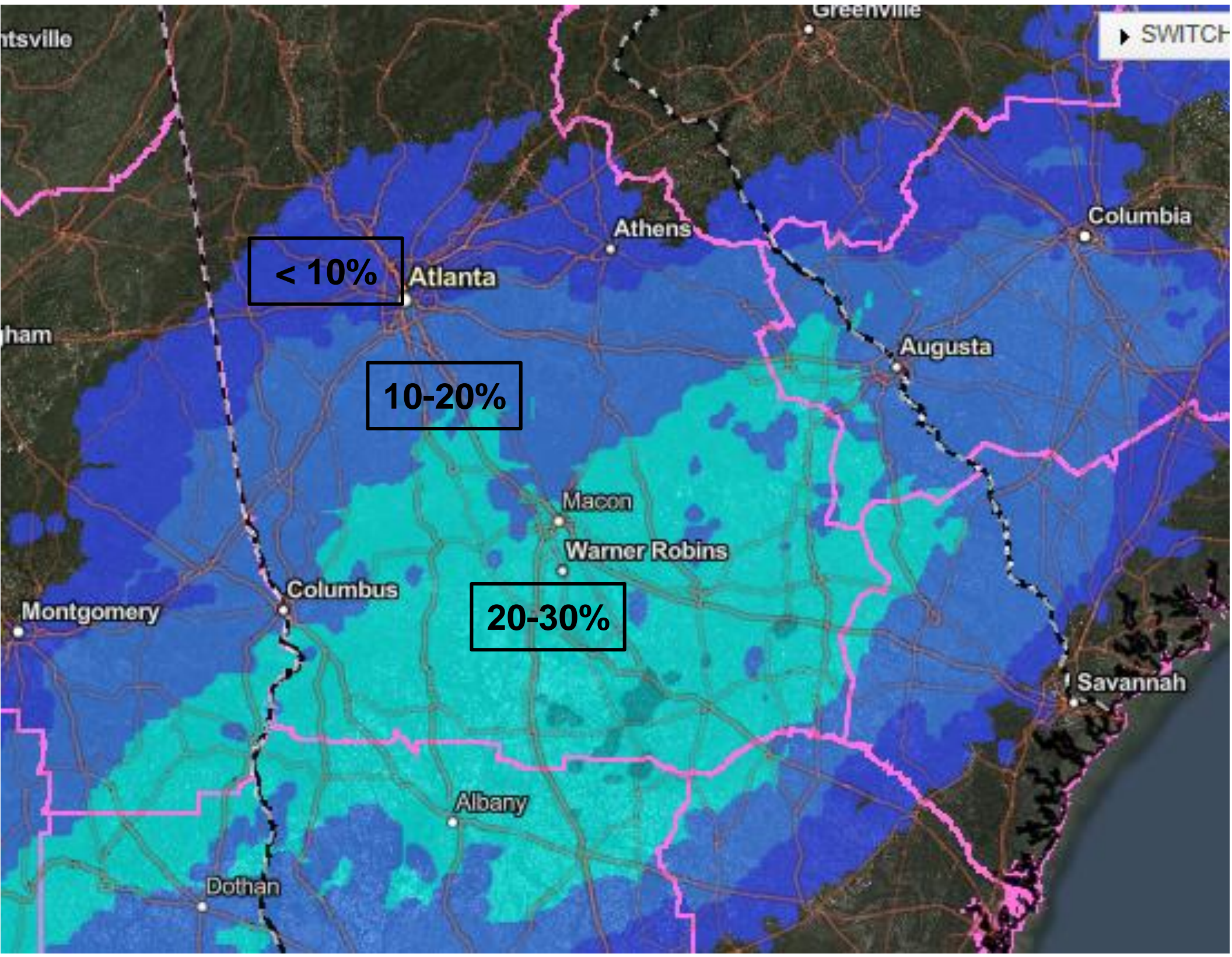




# Potential Impacts (from WSSI)

January 16, 2026  
1:28 PM EST

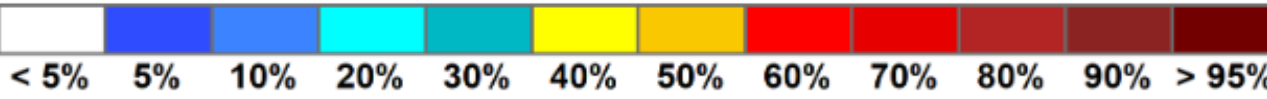
[https://www.wpc.ncep.noaa.gov/wwd/wssi/prob\\_wssi.php](https://www.wpc.ncep.noaa.gov/wwd/wssi/prob_wssi.php)



## Likelihood of **Minor** Impacts from WPC WSSI

Potential Winter Storm Impacts
<b>Minor Impacts</b> Expect a few inconveniences to daily life. <ul style="list-style-type: none"><li>• Winter driving conditions. Use caution while driving.</li></ul>
<b>Moderate Impacts</b> Expect disruptions to daily life. <ul style="list-style-type: none"><li>• Hazardous driving conditions. Use extra caution while driving.</li><li>• Closures and disruptions to infrastructure may occur.</li></ul>
<b>Major Impacts</b> Expect considerable disruptions to daily life. <ul style="list-style-type: none"><li>• Dangerous or impossible driving conditions. Avoid travel if possible.</li><li>• Widespread closures and disruptions to infrastructure may occur.</li></ul>
<b>Extreme Impacts</b> Expect substantial disruptions to daily life. <ul style="list-style-type: none"><li>• Extremely dangerous or impossible driving conditions. Travel is not advised.</li><li>• Extensive and widespread closures and disruptions to infrastructure may occur.</li><li>• Life-saving actions may be needed.</li></ul>

### Likelihood of Impact







# Impacts - Areas of Concern

January 16, 2026  
1:28 PM EST

Sunday into Sunday night



## **DO NOT LET GUARD DOWN!**

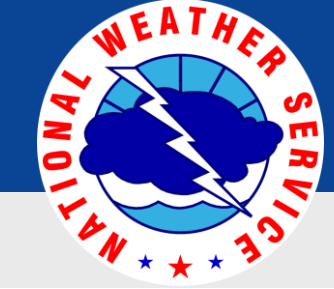
- Backside of the precip area remains unknown at this time.
- Any shift (in precip) back to the west could result in accumulating snow

## **LOW to MODERATE Impact area:**

- Higher probability of snow in this zone
- Temperatures expected to be in the mid-upr 30s which will limit accumulations
- Sunday night/Monday morning “refreeze” concern







# Summary / Main Points

January 16, 2026

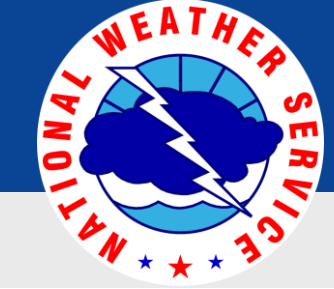
1:28 PM EST

Late Saturday night/Sunday through Monday morning (1/18-19)

- **The threat for wintry precip has shifted south and east for Sunday.**
  - Greatest risk area is now south/east of Columbus to Griffin to Madison.
  - Areas north/west of I-85 looking at very minimal (if any) impacts
- **Where snow does occur... temperatures during day (Sunday) are trending >32F during precipitation, resulting in some melting but also a narrow area of heavy/wet snow on the backside of the precip shield.**
  - General accumulations up to 1" possible
  - Very low chance to see max snow accumulations of 2-3" in a narrow band
- **Temperatures Sunday night/Monday morning expected to drop well into the 20s everywhere – likely resulting in icy/slick areas (black ice)**

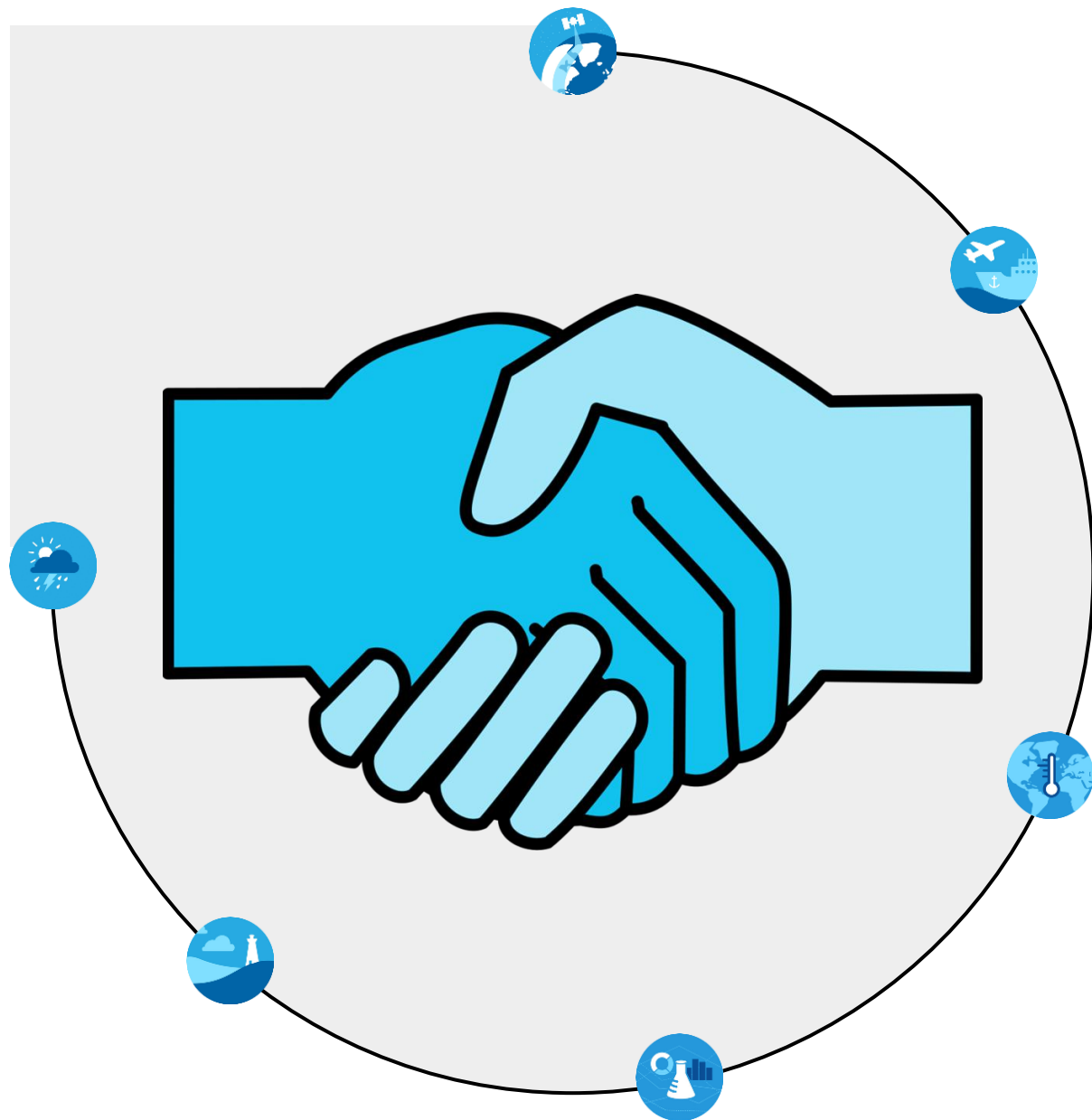






# Contact Info & Additional Briefings

January 16, 2026  
1:28 PM EST



**Additional Briefings?** Email updates for sure



**YES**



**NO**

## Contact Information & Reporting

**Phone:** 770-486-1133

**Email:** [sr-ffc.mets@noaa.gov](mailto:sr-ffc.mets@noaa.gov)

**NWS Chat:** For EMs, Media & Approved Partners

**Reporting Hotline:** 866-763-4466 (Voicemail if busy)

**NWS Atlanta Winter Page:** [www.weather.gov/ffc/winter](http://www.weather.gov/ffc/winter)

