



Atlanta-Fulton County  
Emergency Management  
Agency (AFCEMA)

Welcome



# Winter Weather Integrated Warning Team Workshop

12.10.13



# GEMA Field Coordinator Areas

August 17, 2010



## Field Coordinators

- Area 1: Dan Yeargin
- Area 2: Gary Rice
- Area 3: Gordon Lowe
- Area 4: Ed Westbrook
- Area 5: Allen Robinson
- Area 6: Vickie Thompson
- Area 7: Sheri Russo
- Area 8: Diane Adams

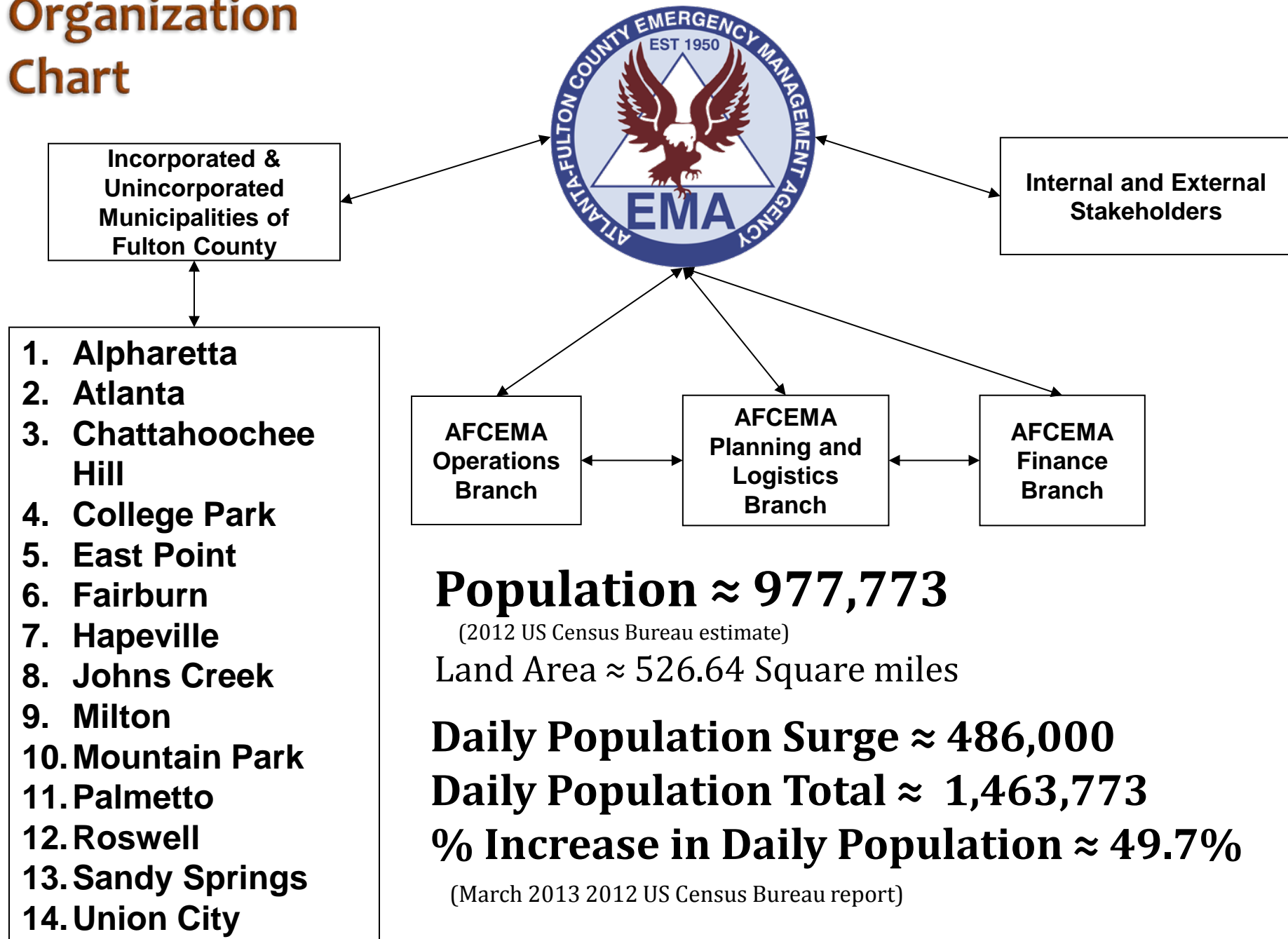
## Area 7

1. Fulton,
2. DeKalb,
3. Cobb,
4. Gwinnett,
5. Clayton,
6. Henry,
7. Rockdale,
8. Fayette, and
9. Douglas





# Organization Chart





# Command vs. Coordination



## Command -

The act of directing, ordering, or controlling by virtue of explicit authority.



## Coordination -

The process of providing support to the command structure.



# Multi-Agency Coordination Center (MACC)

## **MACCs do NOT...**

- Command the on-scene incident
- Make tactical decisions

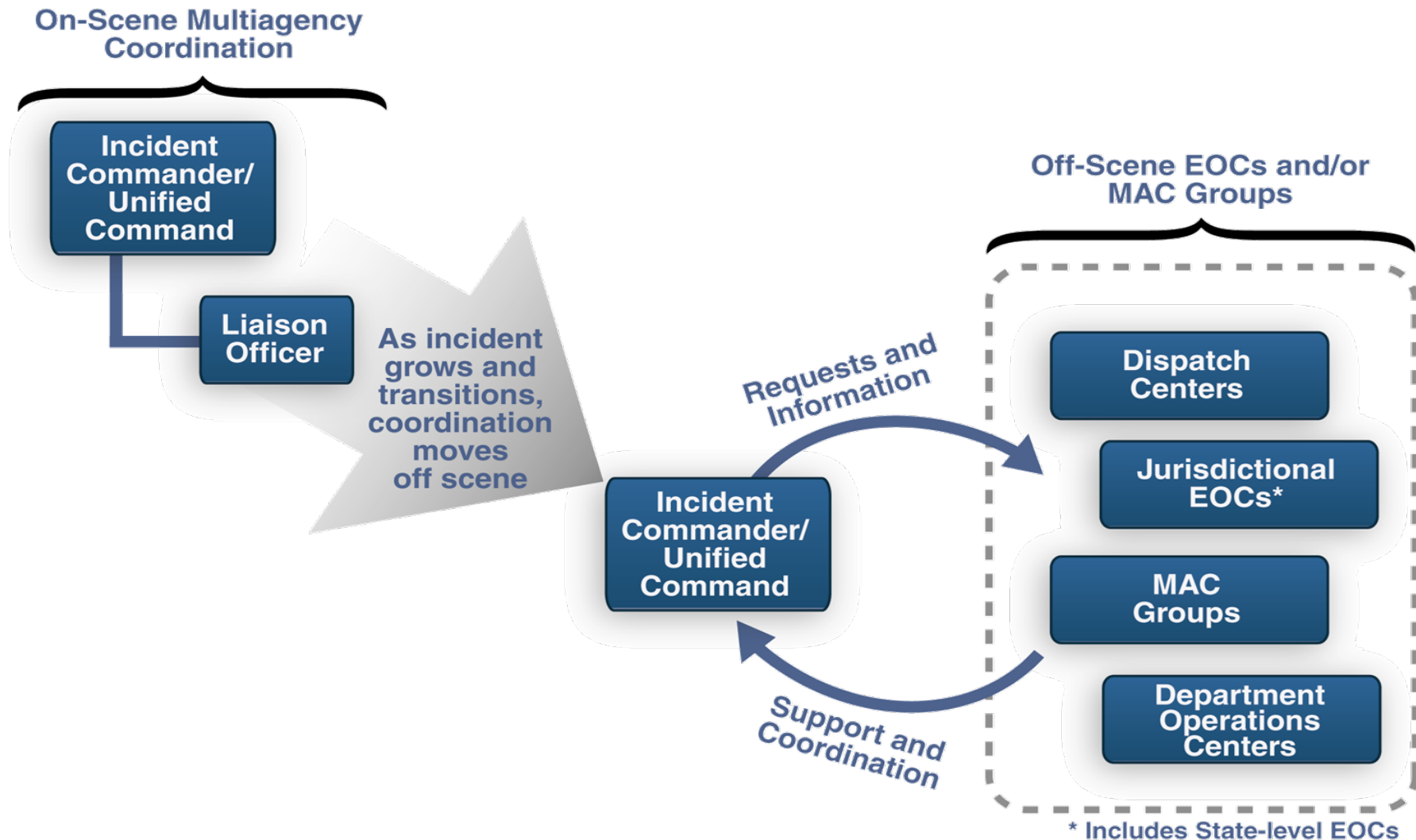
## **MACCs do...**

- Support the on-scene response
- Provide external coordination
- Facilitate information sharing
- Secure additional resources





# How the System Works







# Winter Weather Preparedness



## Storm Response Plan

2012-2013



## Department of Public Works

Executive Document



### POLICY AND PROCEDURE

SUBJECT: SEVERE WEATHER POLICY DURING EMERGENCY CONDITIONS

DATE: 2011

NUMBER: *Will replace policy #100 15 from 11/16/1994*

**Statement of Policy:** Fulton County has a vested interest in the safety and well-being of its employees and that of its residents and guests. As one would expect, many County services become more critical during poor weather conditions. While it is recognized that Fulton County has an obligation to provide general services to the public, it is also recognized that there are emergencies which may arise that will necessitate suspending or otherwise altering the County's operations on a regular workday. Because of this need, it is the County's policy that Fulton County will make every reasonable effort to remain open in inclement weather conditions.

The County Manager (or his or her designee) with the assistance of the Director of the Emergency Management Agency, will establish Fulton County's mission-essential duties during severe weather events or emergencies, and Appointing Authorities (i.e. Department Heads) will determine which employees are needed to maintain these mission-essential duties.



### FACILITIES AND TRANSPORTATION SERVICES DEPARTMENT

#### POLICIES AND PROCEDURES FOR EMERGENCY OPERATIONS

Subject: Emergency Operations Plan

Effective Date: August 2013

#### Statement of Policy

This plan contains the policies and procedures of the Facilities and Transportation Services Department (FTS) for coordinated emergency operations. Employees will use this plan as a guide when responding to emergency operations as directed by the FTS Director or his designee.

## Hazard Specific Annex

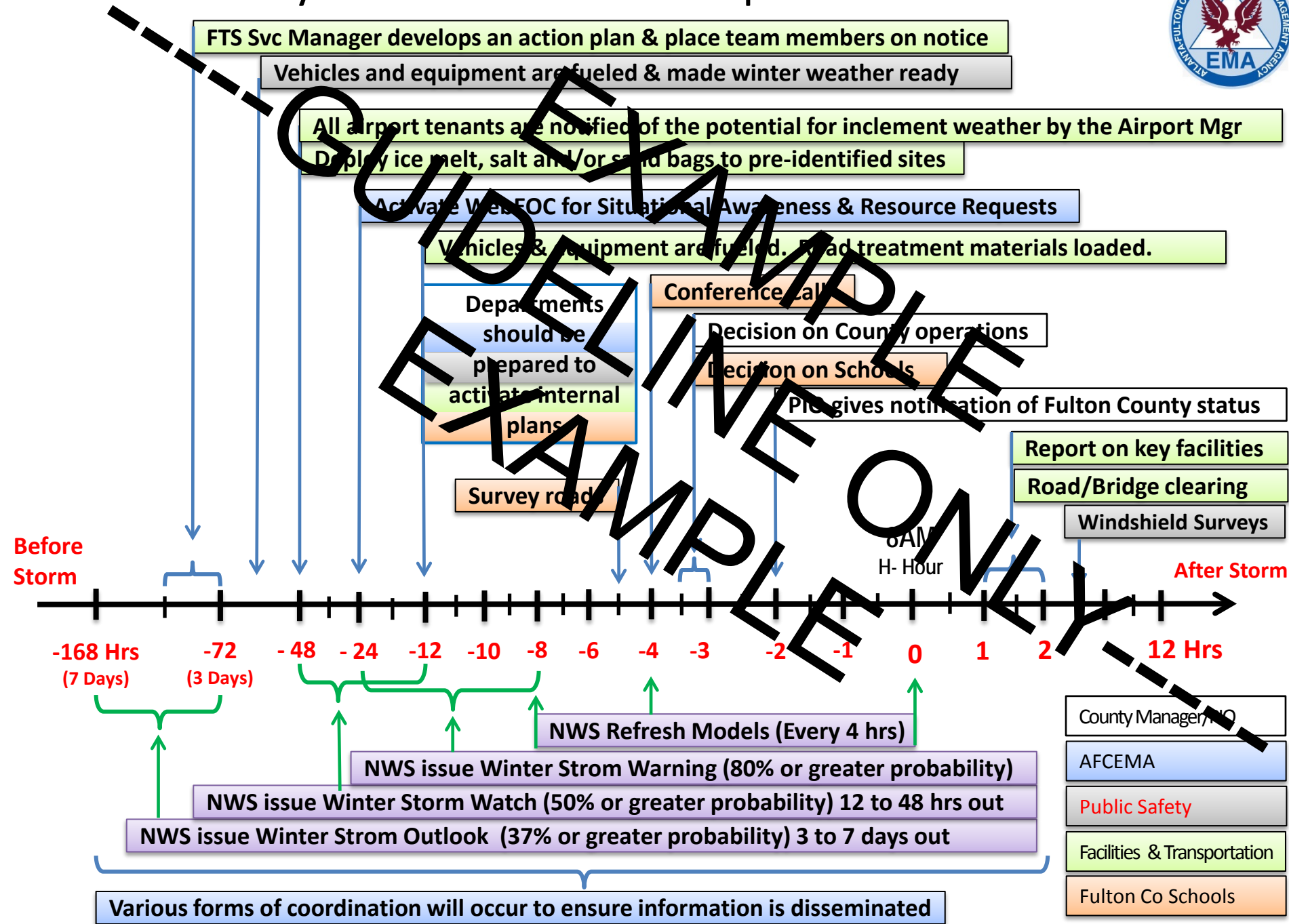
## Winter Weather



Fulton County, Georgia

February 2013

# Fulton County Winter Weather Response Plan Timeline







# RESPONSE - Priorities and Resources

## City of Atlanta Response Priorities

- Main thoroughfares
- 55 Bridges
- 6 Hospitals
- 18 Police Precincts
- 40 Fire Stations
- Designated Emergency Shelters
- City Hall and City Facilities
- North Avenue Substation Area
- Grocery Stores
- Gas Stations

### COA Planned Resources

Level	Temp	Precip	Staff	Treatment	Time Frame	Organization	Equipment
1	<32°	<0.5"	OOT Rotational Staff	Freezing Rain (Treatment as needed)	As Needed	Standard Ops.	4 spreaders
2	25°-32°	>.5 <1"	DPW Staff- DPW mini JOC	Priority 1 Bridges, Priority 1 Bridges (Selected) Priority 1 Routes	4 hrs 12 hrs	Ation Call, Incident Command Activated (DPW NIMS)	20 Box spreaders
3	20°-25°	1"=2"	COA - DPW, DWM, DPW, COA, AFD, AFR)	Priority 1 and 2 Routes	24 hrs	DPW JOC COA if Warranted	30 spreaders DPW-20 Box spreaders DWM-5 box spreaders DWM-5 tailgate spreaders
4	<20°	>=2"	COA and Contractors	All Level 3 plus Local Routes (Garbage routes)	24-48 hrs Completion	COA JOC	30 Spreaders DPW-20 box spreaders DWM-5 box spreaders DWM-5 tailgate spreaders 40 Snow plows DPW-20 Snow plows DPW-10 Garbage trucks DWM-10 Snow plows Contractor Support (1900 units)

# Department of Public Works Snow & Ice Plan 2011-2012

## Fulton County (Unincorporated) Ice Treatment Roads & Bridges January 2011

### Legend

★ Treated Bridges

— Treated Roads

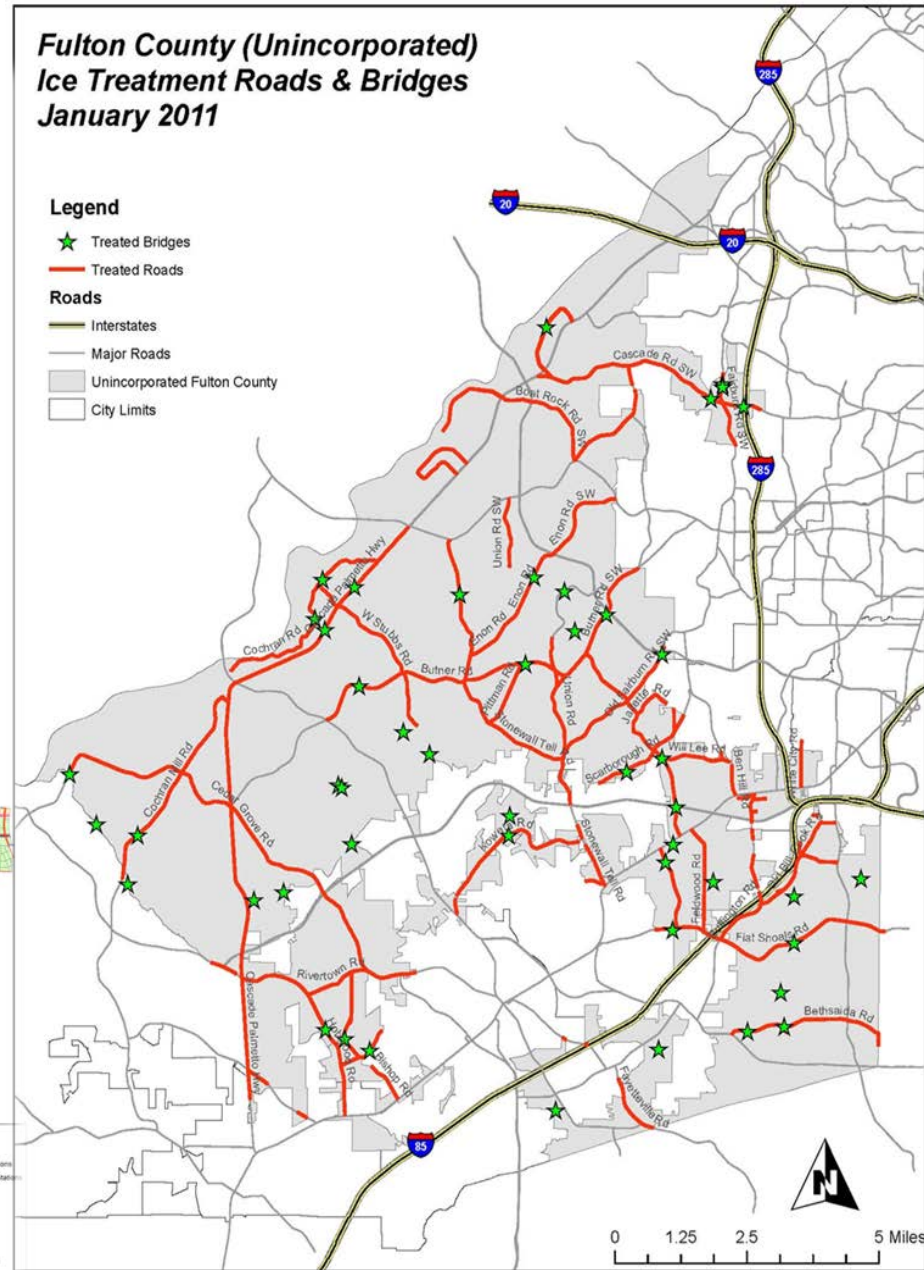
### Roads

— Interstates

— Major Roads

— Unincorporated Fulton County

— City Limits



### Legend

- Priority Fire Stations
- First Priority Fire Stations
- Second Priority Fire Stations
- Atlanta Hospitals
- Police Precincts
- Bridges
- State Bridges
- Emergency Shelters
- Police Mini Precincts
- Police Precincts
- Atlanta City Hall
- Atlanta State Routes
- First Priority
- Second Priority
- Streets
- South West Quadrant
- South East Quadrant
- North East Quadrant
- North West Quadrant

Rev. 10-3-2011







# Situational Awareness



## Atlanta Public Works Road Treatment Status Board



Incident: Testing and Training

New Record

Priority 1 Routes

Select

Public Safety Requests

Select

Treatment Order	Quad / Region <small>Only Priority 2 routes use Regions (sub-areas)</small>		Route	From	To	Current Status	Assigned Crews:		Route Details	Update
01	NW		Donald Lee Hollowell	Marietta Street	Northside Drive	Tx In Progress	A	B	Select	Update
02	NW		Northside Drive	Donald Lee Hollowell	North City Limits	Deployed	A	B	Select	Update
03	NW		Northside Parkway	Northside Drive	West City Limits	Tx In Progress	A	B	Select	Update
04	NW	A	Donald Lee Hollowell	Marietta Street	West City Limits	Staging	AA	BB	Select	Update
05	NW		West Marietta	Northside Drive	West City Limits	Tx Complete	AA	BB	Select	Update
06	NE		10th Street	Northside Drive	West City Limits	Staging	C	D	Select	Update
07	NE		14th Street	Northside Drive	Piedmont	Staging	C	D	Select	Update
08	NE		17th Street	Northside Drive	West Peachtree	Staging	C	D	Select	Update
09	NE		Wedgmont Road	I-75	Roswell Road	Staging	C	D	Select	Update
10	NE		Decatur Street	Peachtree Street	East City Limits	Staging	CC	DD	Select	Update
11	NE		Memorial Drive	Moreland Avenue	East City Limits	Staging	CC	DD	Select	Update
12	NE		Moreland Avenue	North City Limits	Memorial Drive	Staging	CC	DD	Select	Update
13	SW		Cascade	Ralph D. Abernethy Blvd.	New Hope	Staging	E	F	Select	Update
14	NW		Ralph D. Abernethy Blvd.	West Mitchell	Cascade	Staging	E	F	Select	Update
15	SE		McDonough	Moreland Avenue	Hank Aaron	Staging	FF	GG	Select	Update
16	SW		Memorial Drive	Peachtree Street	Trinity Avenue	Staging	FF	GG	Select	Update





# Intel Needed from the NWS

**DISCLAIMER -- Comments/Suggestions are from Area 7 EMAs**

- Pre Event Intel

- Timely updates
  - Get the information to us as soon as you can
- Most accurate information possible
- Please include “Probability Percentages”
- Level of Certainty vs Uncertainty regarding predictions
- Love email updates!!!!

- During Event Intel

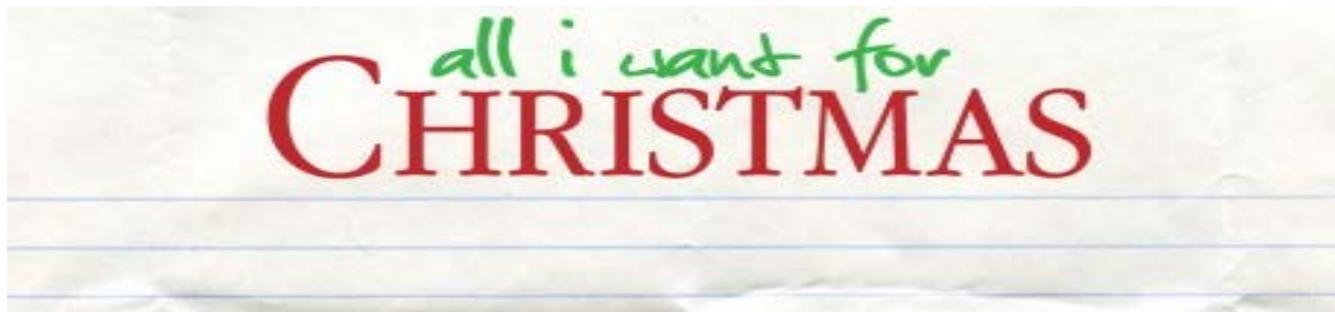
- Updates (We know you are busy and we are too)
- Any major changes to severity & duration of the event





# Intel Needed from the NWS

## (Comments/Suggestions from Area 7 EMAs)



- Predictions crafted for smaller portions of the NWS warning area
- Conference calls for smaller portions of the NWS warning area
- Reinstate the Emergency Managers Conference Calls
  - Allow for frank conversations
  - Also notice NWS meteorologist are more guarded/reserved regarding comments and discussions



**DISCLAIMER -- Comments/Suggestions are from Area 7 EMAs**

**We love our meteorologists at the  
Peachtree City office !!!**







# Media & Emergency Mgmt



- We want to be partners
  - TV Meteorologists get the message out to our customers better than anyone else.
  - We need to find ways to better coordinate and communicate
- Media request must go through the Public Information Officer (PIO)
  - EMAs will always provide timely life safety information
- Enhance collaboration regarding intel received from viewers via social media
  - Would help us determine where to vector resources
  - Also provide us a better idea regarding preliminary damage assessments

**DISCLAIMER -- Comments/Suggestions are from Area 7 EMAs**



# THANK YOU



[www.facebook.com/AFCEMA](http://www.facebook.com/AFCEMA)



# Questions



[@AFCEMA](https://twitter.com/AFCEMA)

[afcema@afcema.com](mailto:afcema@afcema.com)

404.612.5660