

# Year in Review - Hurricanes



**4** Tropical Systems impacted GA within a 1 year period



Hermine



Matthew



Irma



Nate



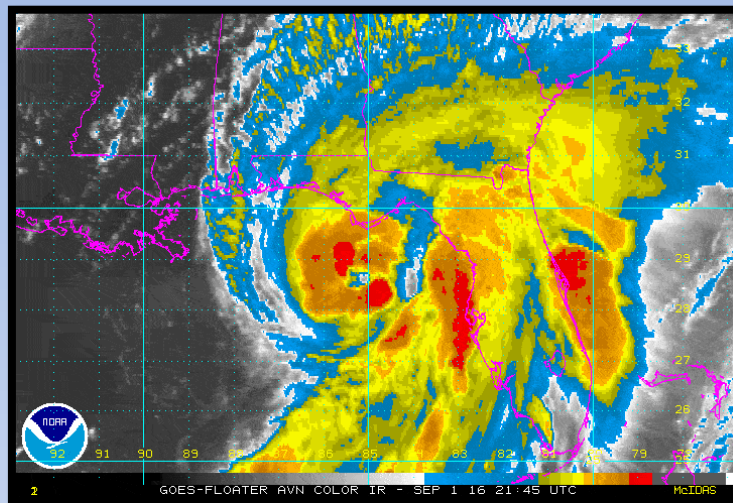
First time **entire** state declared in a presidential disaster declaration - Irma



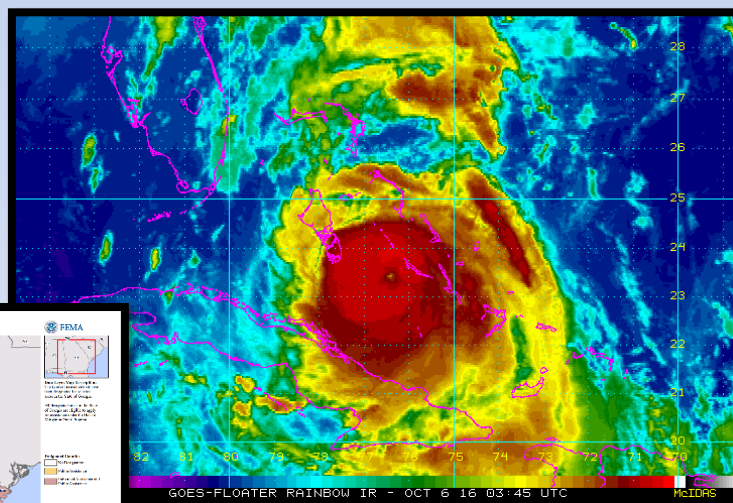
First time ATL metro under a Tropical Storm Watch/Warning (NWS started inland warnings in 2008)



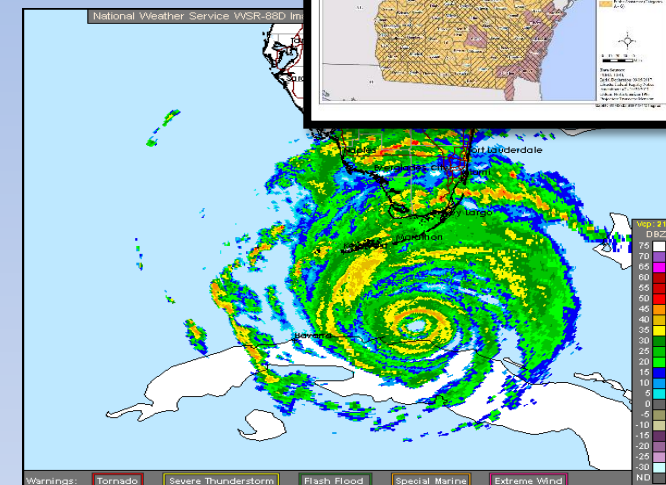
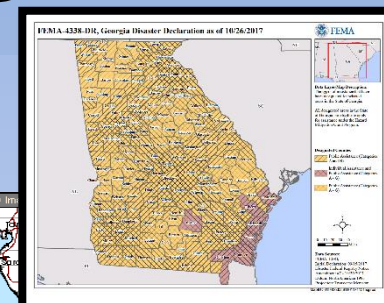
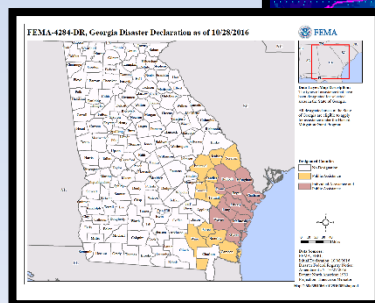
Peak of around **2 million** customers in GA without power (8+million in SE from the storm breaking the US record – Sandy 2011)



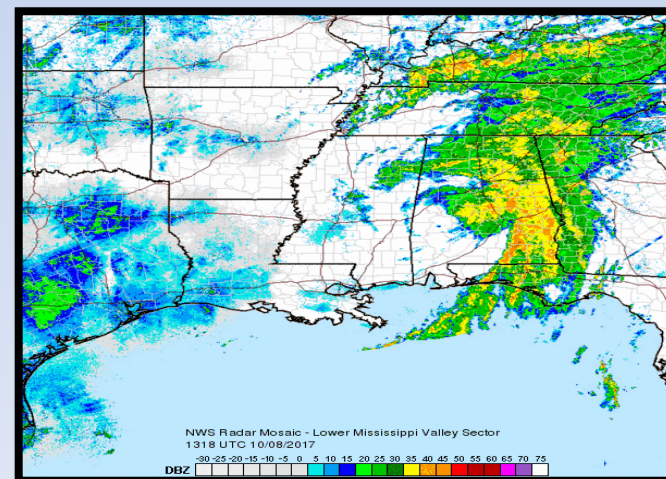
Hermine – Sept 2016



Matthew – October 2016



Irma – Sept 2017



Nate – October 2017

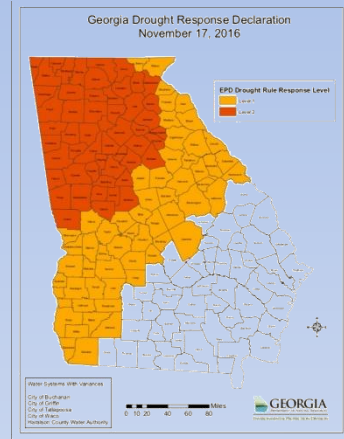
# Year in Review - Drought



Nearly 34% of the state in D4 Drought, 63% in D3-D4

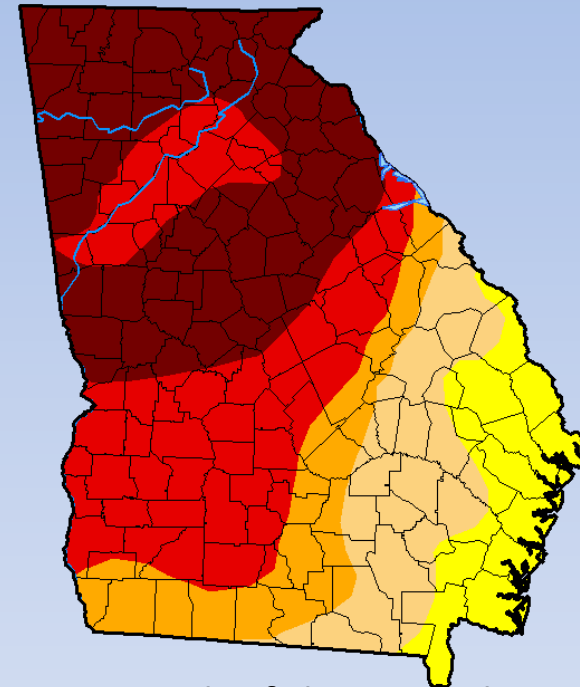


52 Counties in Level 2 and 53 Counties in Level 1 Drought restrictions



**ATLANTA (AP)** -- "Beaver dams have been demolished, burbling fountains silenced, and the drinking water in one southern town has taken on the light brownish color of sweet tea."

## U.S. Drought Monitor Georgia



Peak of the Drought

**November 29, 2016**  
(Released Thursday, Dec. 1, 2016)  
Valid 7 a.m. EST

Drought Conditions (Percent Area)

	None	D0-D4	D1-D4	D2-D4	D3-D4	D4
<b>Current</b>	0.00	100.00	88.87	74.56	62.36	33.22
<b>Last Week</b> 11-22-2016	0.00	100.00	76.64	67.76	56.60	33.78
<b>3 Months Ago</b> 08-30-2016	18.68	81.32	49.28	28.20	5.27	0.00
<b>Start of Calendar Year</b> 12-29-2015	87.36	12.64	0.00	0.00	0.00	0.00
<b>Start of Water Year</b> 09-27-2016	35.37	64.63	45.84	34.50	14.67	1.58
<b>One Year Ago</b> 12-01-2015	87.90	12.10	0.00	0.00	0.00	0.00

### Intensity

D0 Abnormally Dry    D3 Extreme Drought  
D1 Moderate Drought    D4 Exceptional Drought  
D2 Severe Drought

The Drought Monitor focuses on broad-scale conditions. Local conditions may vary. See accompanying text summary for forecast statements.

### Author:

Richard Heim  
NCEI/NOAA



<http://droughtmonitor.unl.edu/>



# Year in Review - Fires



119,000+ acres across 8 states (fall 2016) – North GA



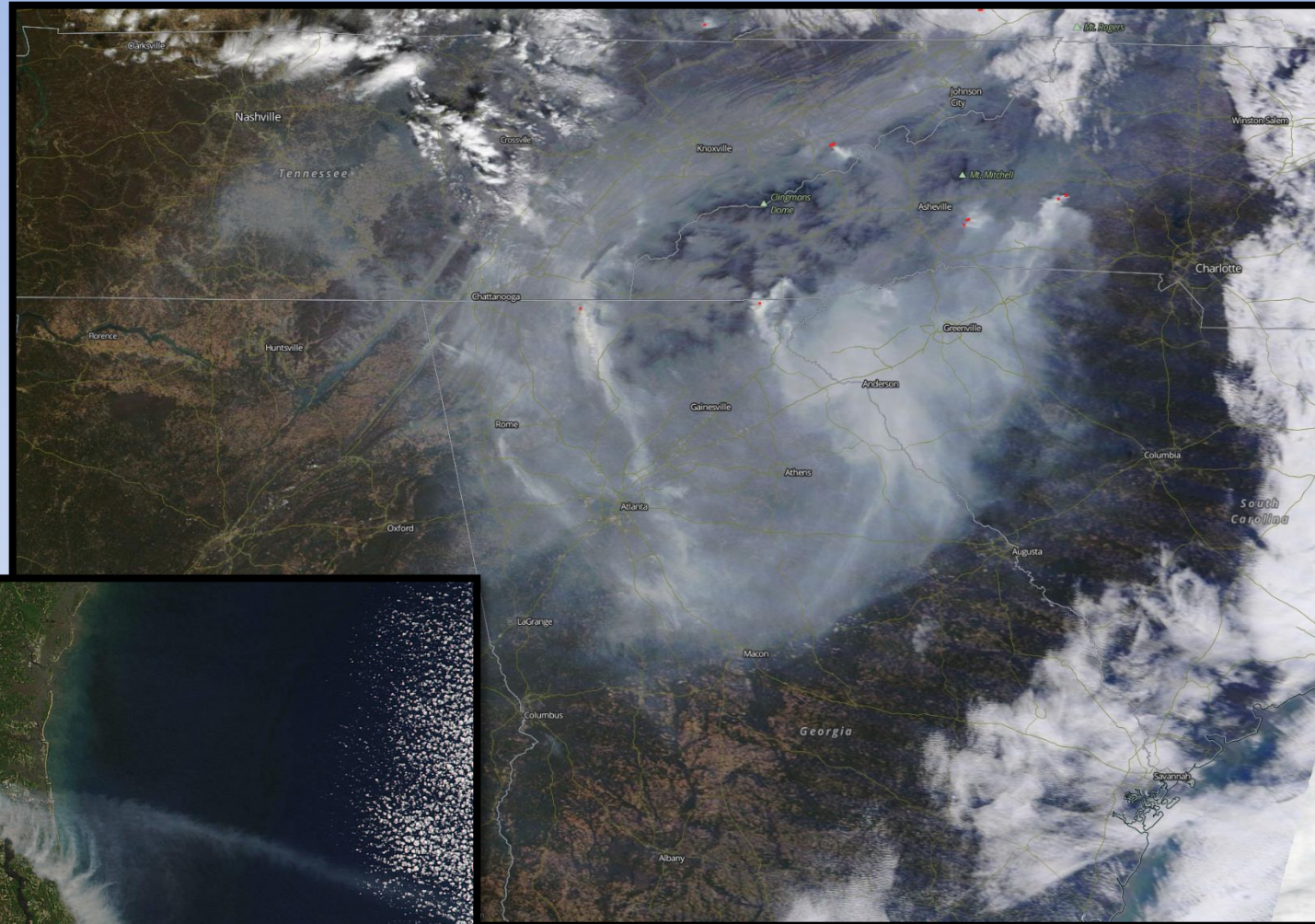
November 2016 – Asthma, health related issues significantly increased due to smoke



West Mims and other fires 131,000+ acres (Spring 2017) – Southeast GA



Culminated by the Gatlinburg Fire on Nov 19, 2016 – 13 dead



November 14, 2016



May 8, 2017



# Year in Review – Winter??



Snow/Ice event on Jan 6-7. More on that event later



Record warmth in January/February led to crops blooming 3 weeks early



1 Billion \$ in crop damage resulted from the March 14-16 hard freeze. Mostly GA but also SC.



## There Won't Be as Many Peaches This Year

Georgia's peach crop is suffering much worse than expected, up to 80 percent may be gone.

May 31, 2017, at 11:01 a.m.

AP

ATLANTA (AP) — Georgia's peach crop is suffering much worse than expected.

## U.S. 2017 Billion-Dollar Weather and Climate Disasters



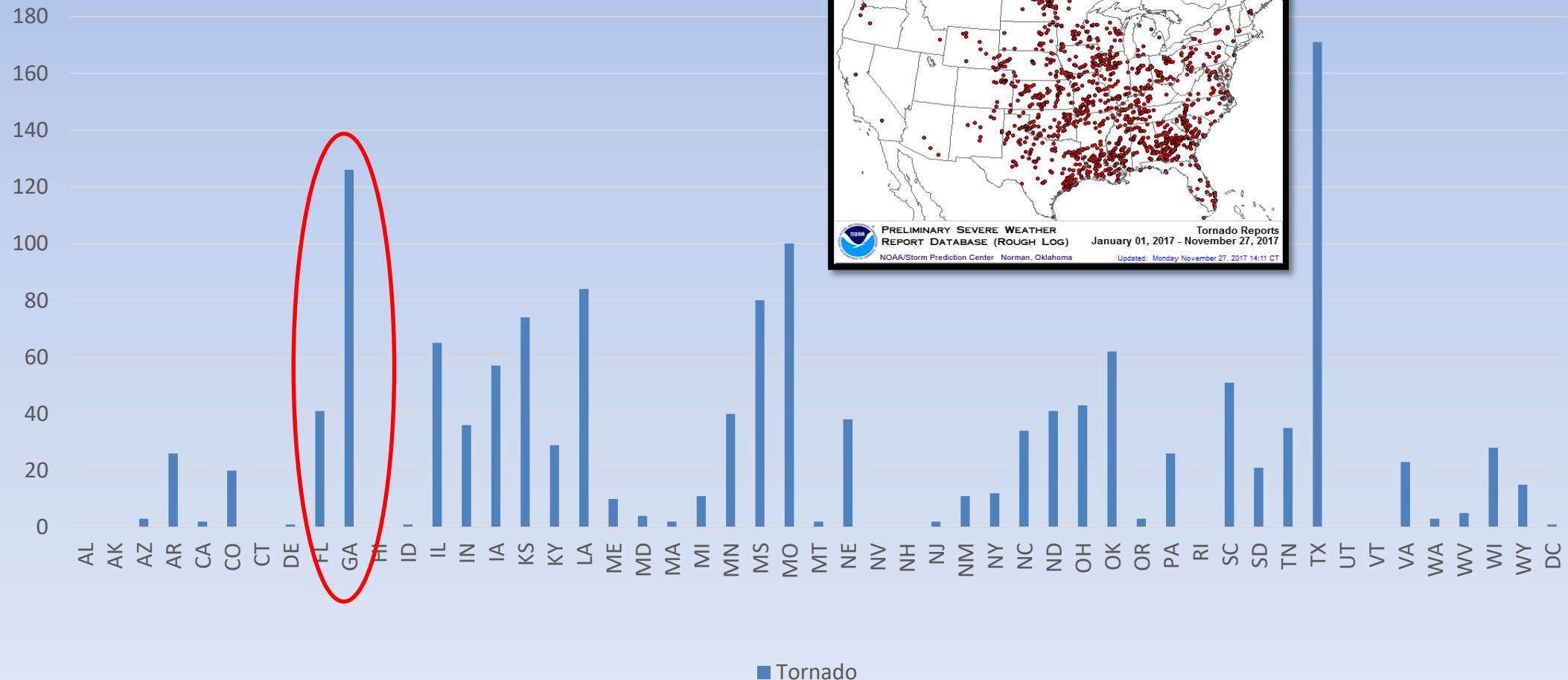
This map denotes the approximate location for each of the 15 billion-dollar weather and climate disasters that have impacted the United States January through September of 2017, a record pace.

# Year in Review – Severe Weather



GA Ranks 2<sup>nd</sup> in the US in Tornadoes – 114 confirmed (TX leads, with many due to Harvey)

## Tornado Reports in the US in 2017



# Year in Review – Severe Weather

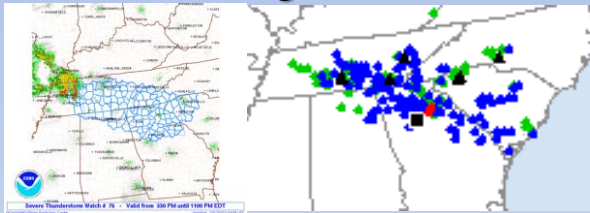
## Several Significant Severe Weather Days



In addition to the tornado days (Table) there were several other significant events

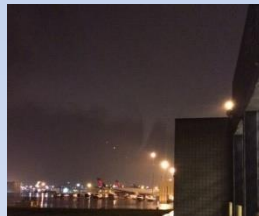


**March 21 – Straight Line Wind Event**



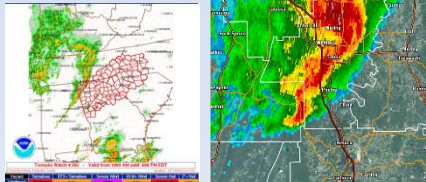
**May 4 – ATL Hartsfield Tornado and Wake Low Winds (North/NW GA)**


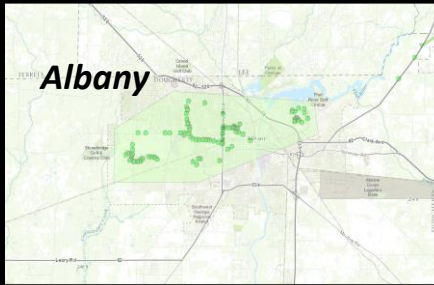
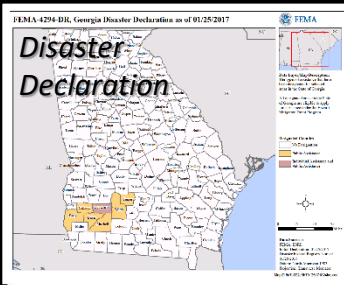

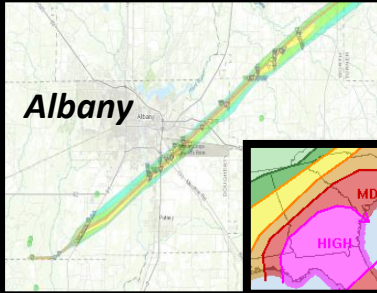
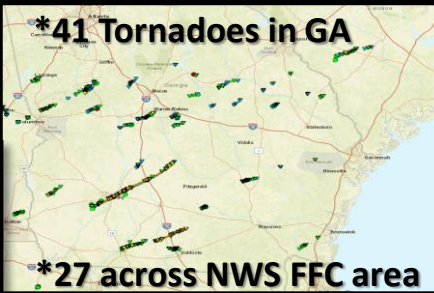
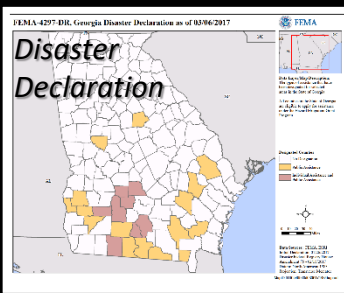

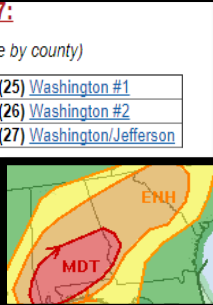

60+mph winds  
lasted for several  
hours across N GA –  
Blew down  
thousands of trees



**May 24 – North GA Tornadoes**

Whitfield, Gordon, Gilmer,  
Fannin



Date	Event Overview																																			
<div>Jan 2, 2017</div>	<div> Albany</div> <div>3-4 mile wide swath of 80-85 mph wind</div>																																			
<div>Jan 21-22 2017</div>	<div> Albany</div> <div>One of Jan Strongest on record</div>		<div>*41 Tornadoes in GA</div> <div>*27 across NWS FFC area</div> 																																	
<div>Apr 3, 2017</div>	<div> Record Setting Outbreak</div> <div>*27 in one day (broke Jan record)</div>	<div>Tornadoes of April 3, 2017:</div> <div>(in chronological order of tornado occurrence by county)</div> <table><tbody><tr><td>(1) <a href="#">Carroll</a></td><td>(9) <a href="#">Webster</a></td><td>(17) <a href="#">Jones</a></td><td>(25) <a href="#">Washington #1</a></td></tr><tr><td>(2) <a href="#">Fulton</a></td><td>(10) <a href="#">Spalding</a></td><td>(18) <a href="#">Twiggs #1</a></td><td>(26) <a href="#">Washington #2</a></td></tr><tr><td>(3) <a href="#">Muscogee</a></td><td>(11) <a href="#">Upson #1</a></td><td>(19) <a href="#">Wilkinson #1</a></td><td>(27) <a href="#">Washington/Jefferson</a></td></tr><tr><td>(4) <a href="#">Stewart #1</a></td><td>(12) <a href="#">Upson #2</a></td><td>(20) <a href="#">Twiggs/Wilkinson</a></td><td></td></tr><tr><td>(5) <a href="#">Stewart #2</a></td><td>(13) <a href="#">Schley</a></td><td>(21) <a href="#">Wilkinson/Laurens</a></td><td></td></tr><tr><td>(6) <a href="#">Lumpkin</a></td><td>(14) <a href="#">Henry</a></td><td>(22) <a href="#">Wilkinson #3</a></td><td></td></tr><tr><td>(7) <a href="#">Talbot #1</a></td><td>(15) <a href="#">Monroe</a></td><td>(23) <a href="#">Hancock</a></td><td></td></tr><tr><td>(8) <a href="#">Talbot #2</a></td><td>(16) <a href="#">Peach/Houston</a></td><td>(24) <a href="#">Wilkinson #4</a></td><td></td></tr></tbody></table>		(1) <a href="#">Carroll</a>	(9) <a href="#">Webster</a>	(17) <a href="#">Jones</a>	(25) <a href="#">Washington #1</a>	(2) <a href="#">Fulton</a>	(10) <a href="#">Spalding</a>	(18) <a href="#">Twiggs #1</a>	(26) <a href="#">Washington #2</a>	(3) <a href="#">Muscogee</a>	(11) <a href="#">Upson #1</a>	(19) <a href="#">Wilkinson #1</a>	(27) <a href="#">Washington/Jefferson</a>	(4) <a href="#">Stewart #1</a>	(12) <a href="#">Upson #2</a>	(20) <a href="#">Twiggs/Wilkinson</a>		(5) <a href="#">Stewart #2</a>	(13) <a href="#">Schley</a>	(21) <a href="#">Wilkinson/Laurens</a>		(6) <a href="#">Lumpkin</a>	(14) <a href="#">Henry</a>	(22) <a href="#">Wilkinson #3</a>		(7) <a href="#">Talbot #1</a>	(15) <a href="#">Monroe</a>	(23) <a href="#">Hancock</a>		(8) <a href="#">Talbot #2</a>	(16) <a href="#">Peach/Houston</a>	(24) <a href="#">Wilkinson #4</a>		
(1) <a href="#">Carroll</a>	(9) <a href="#">Webster</a>	(17) <a href="#">Jones</a>	(25) <a href="#">Washington #1</a>																																	
(2) <a href="#">Fulton</a>	(10) <a href="#">Spalding</a>	(18) <a href="#">Twiggs #1</a>	(26) <a href="#">Washington #2</a>																																	
(3) <a href="#">Muscogee</a>	(11) <a href="#">Upson #1</a>	(19) <a href="#">Wilkinson #1</a>	(27) <a href="#">Washington/Jefferson</a>																																	
(4) <a href="#">Stewart #1</a>	(12) <a href="#">Upson #2</a>	(20) <a href="#">Twiggs/Wilkinson</a>																																		
(5) <a href="#">Stewart #2</a>	(13) <a href="#">Schley</a>	(21) <a href="#">Wilkinson/Laurens</a>																																		
(6) <a href="#">Lumpkin</a>	(14) <a href="#">Henry</a>	(22) <a href="#">Wilkinson #3</a>																																		
(7) <a href="#">Talbot #1</a>	(15) <a href="#">Monroe</a>	(23) <a href="#">Hancock</a>																																		
(8) <a href="#">Talbot #2</a>	(16) <a href="#">Peach/Houston</a>	(24) <a href="#">Wilkinson #4</a>																																		
<div>Apr 5, 2017</div>	<div> 2<sup>nd</sup> High Risk Day for the year</div> <div>3 strong EF2 tracks missed populated areas</div>	