



NWS Atlanta -- North & Central GA Integrated Warning Team Meeting

SPS – Winter Product “demo”



Why use the SPS for winter weather?

- Fill the information gap between Watch or Warning issuance and when the winter conditions begin
- Give details on when precipitation is expected to begin and end
- Message potentially impactful events that do not meet Warning or Advisory criteria
- Give details on precipitation types and expected changeovers, accumulations, and calls-to-action
- Provide rumor control



Example 1: Recent case from NWS Pittsburgh



11:07

Near KPBZ

Special Weather Statement 32m
Pennsylvania
Allegheny, Beaver & Butler

...A SNOW SHOWER WILL AFFECT NORTHEASTERN BEAVER...SOUTHERN BUTLER AND NORTH CENTRAL ALLEGHENY COUNTIES... At 1102 AM EST, a snow shower was located near Rochester, or near Monaca, moving east at 40 mph. Locations impacted include... Cranberry, Butler, Aliquippa, Beaver Falls, Monaca, Economy, Homeacre-Lyndora, New Brighton, Shanor-Northvue, Beaver, Baden, and Meridian. This includes the following highways... Pennsylvania Turnpike between mile markers 14 and 31. Interstate 79 in Pennsylvania between mile markers 77 and 93. Visibilities will drop quickly to less than a half mile in this snow shower, and a quick accumulation of one-half to one inch of snow is possible, including on roads. Conditions can deteriorate rapidly in winter weather situations. Be prepared for snow or ice covered roads. Slow down and allow extra time when traveling.

Done

SPS basis: heavy snow shower

- Speed & direction of motion
- Locations to be impacted

- Visibility
- Expected accumulations
- Potential hazard
- Calls-to-action



Example 2: Supplementing a Warning*

Special Weather Statement
National Weather Service Peachtree City GA
154 PM EST Tue Nov 29 2022

GAZ014-022>025-027-033>035-045>047-291930-
Madison-Hall-Banks-Jackson-Dawson-North
Fulton-Walton-Rockdale-Barrow-DeKalb-Forsyth-Gwinnett-
154 PM EST Tue Nov 29 2022

...WINTER PRECIPITATION WILL AFFECT NORTH CENTRAL ROCKDALE...
BARROW...DEKALB...FORSYTH...GWINNETT...BANKS...NORTHWESTERN WALTON...
SOUTHEASTERN DAWSON...HALL...JACKSON...NORTHEASTERN FULTON AND WEST
CENTRAL MADISON COUNTIES...

A mix of winter precipitation is expected to begin by 4 PM across these counties.
Precipitation may begin as a mix of rain, sleet, and snow before transitioning
to all snow by evening as colder air filters in from the northeast.

Locations impacted include...

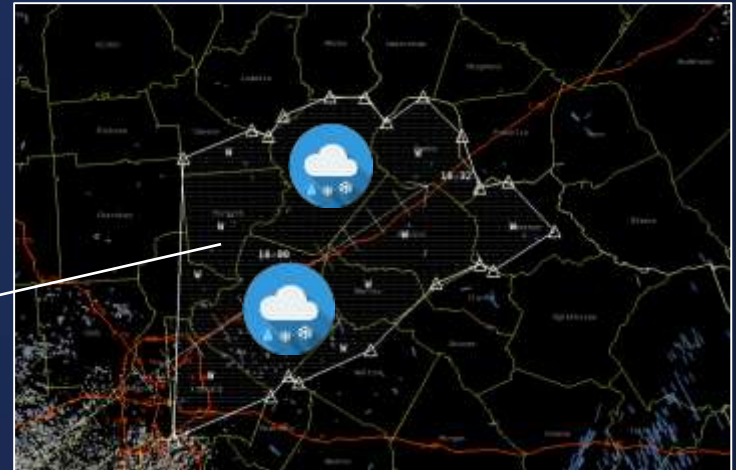
Gainesville, Lawrenceville, Decatur, Winder, Jefferson, Commerce,
Cumming, Homer, Peachtree Corners, Sandy Springs, Roswell, Johns
Creek, Alpharetta, Dunwoody, Milton, Duluth, Sugar Hill, Snellville,
Suwanee and Buford.

**A Winter Storm Warning is in effect for the area. Please monitor
local media outlets and the National Weather Service for further
statements.**

Icy roads are possible as the snow melts on the roads then quickly
refreezes.

Conditions can deteriorate rapidly in winter weather situations. Be
prepared for snow or ice covered roads. Slow down and allow extra
time when traveling.

SPS covering classic wedge area



- Timing
- Precip type

Locations to be impacted

- Potential hazard
- Calls-to-action

***In this situation, a
Warning is already in
effect, so this product
is intended to provide
updated information
to the public**

LAT...LON 3446 8340 3442 8338 3432 8339 3430 8337



Example 3: Wintry precip above a certain elevation*

Special Weather Statement
National Weather Service Peachtree City GA
206 PM EST Tue Nov 29 2022

GAZ006>009-013>016-291930-
Gilmer-Dawson-Union-Towns-Pickens-White-Lumpkin-Fannin-
206 PM EST Tue Nov 29 2022

...A WINTRY MIX WILL AFFECT CENTRAL TOWNS...NORTHERN LUMPKIN...
SOUTHEASTERN GILMER...NORTHWESTERN WHITE...NORTHWESTERN
DAWSON... NORTHEASTERN PICKENS...CENTRAL UNION AND SOUTHEASTERN
FANNIN COUNTIES...

SPS basis: wintry mix

At 206 PM EST, an area of mixed precipitation including snow, sleet and
freezing rain was located across the **higher elevations of Northern Georgia**.
Light wintry accumulations are possible.

Precip type

Impacts from this wintry mix will be confined to elevations above
approximately 2000 feet.

Elevations to be impacted

Locations impacted include...

Young Harris, Suches, Amicalola Falls State Park, Sequoyah Lake, Blue
Mountain Shelter, Woods Hole Shelter, Low Gap Shelter, Fausett Lake,
Len Foote Hike Inn, Vogel State Park, Anna Ruby Falls, Stover Creek
Shelter, Turners Corner, Gaddistown, Camp Merrill, Whitley Gap Shelter,
Brasstown Bald, Mountain Scene, Springer Mountain Shelter and Camp
Coleman Lake.

Locations to be impacted

Although this event is expected to be short lived, if conditions
worsen, a Winter Weather Advisory may become necessary. Please
monitor local media outlets and the National Weather Service for
further statements.

Call-to-action



***In this situation, the polygon
was drawn to include only the
portions of the counties at or
above 2000 feet**

LAT...LON 3493 8360 3492 8359 3491 8363 3488 8366 3482 8365 3480 8368
3478 8366 3465 8383 3465 8393 3461 8405 3444 8433 3457 8445 3474
8414 3483 8418 3484 8399 3482 8386 3494 8392 3492 8376 3495 8355



The Winter SPS is not just for precipitation!

- Freezing fog
- Flash freeze
- Black ice

Little to no accumulation involved, but can have major impacts on travel and thus require special messaging

The Winter SPS will be used as needed this winter!

Planned, future additions include:

- Bulleted, standardized format
- Updated call-to-action options
- Additional information options for the forecaster to choose from