

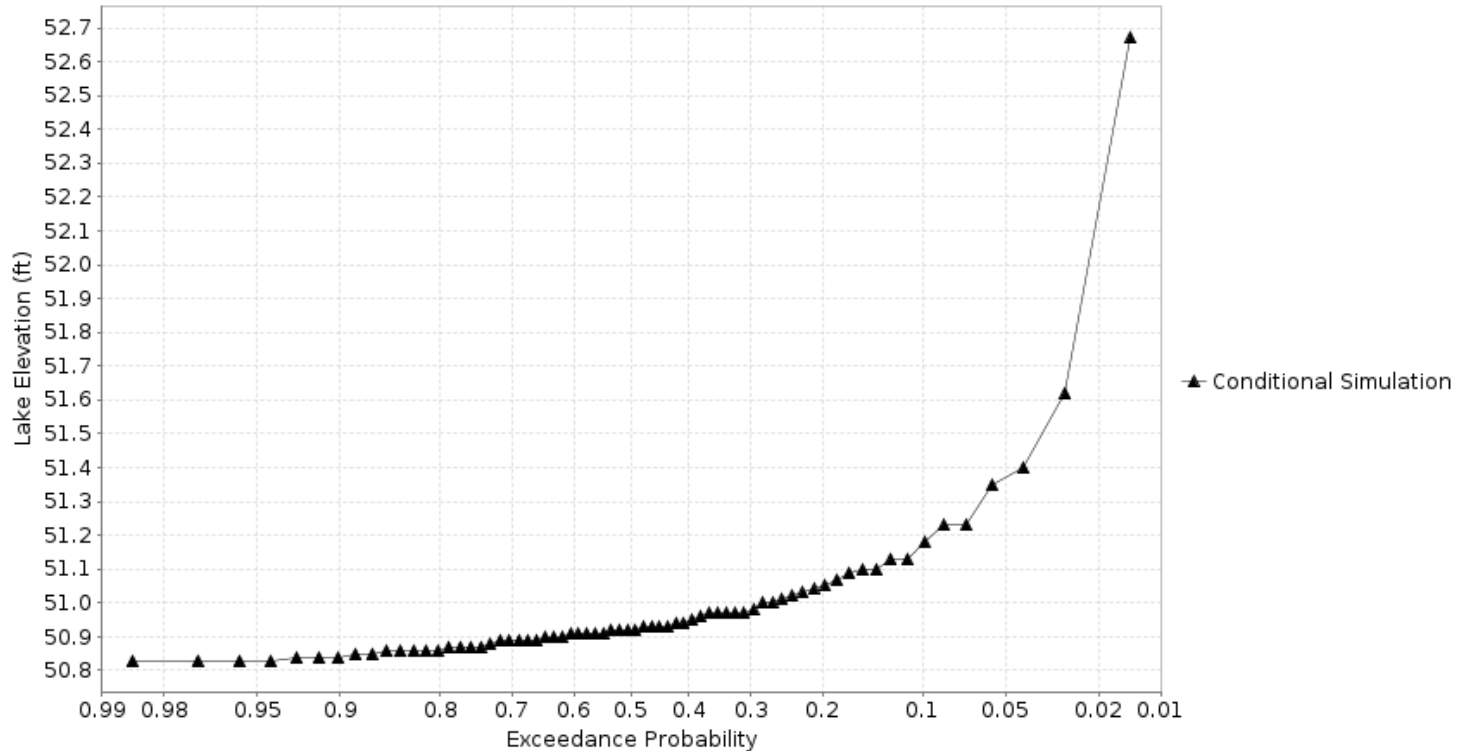
# Devils Lake Basin

Probability of Rising to High Lake Levels on the Devils Lake at Devils Lake 5SW-Creel Bay (DCBN8)

Forecast for the period 06/20/2022 - 09/30/2022

This is a conditional simulation based on the conditions as of 06/20/2022

Pumping schedule : 350cfs Jun 1 - Oct 31

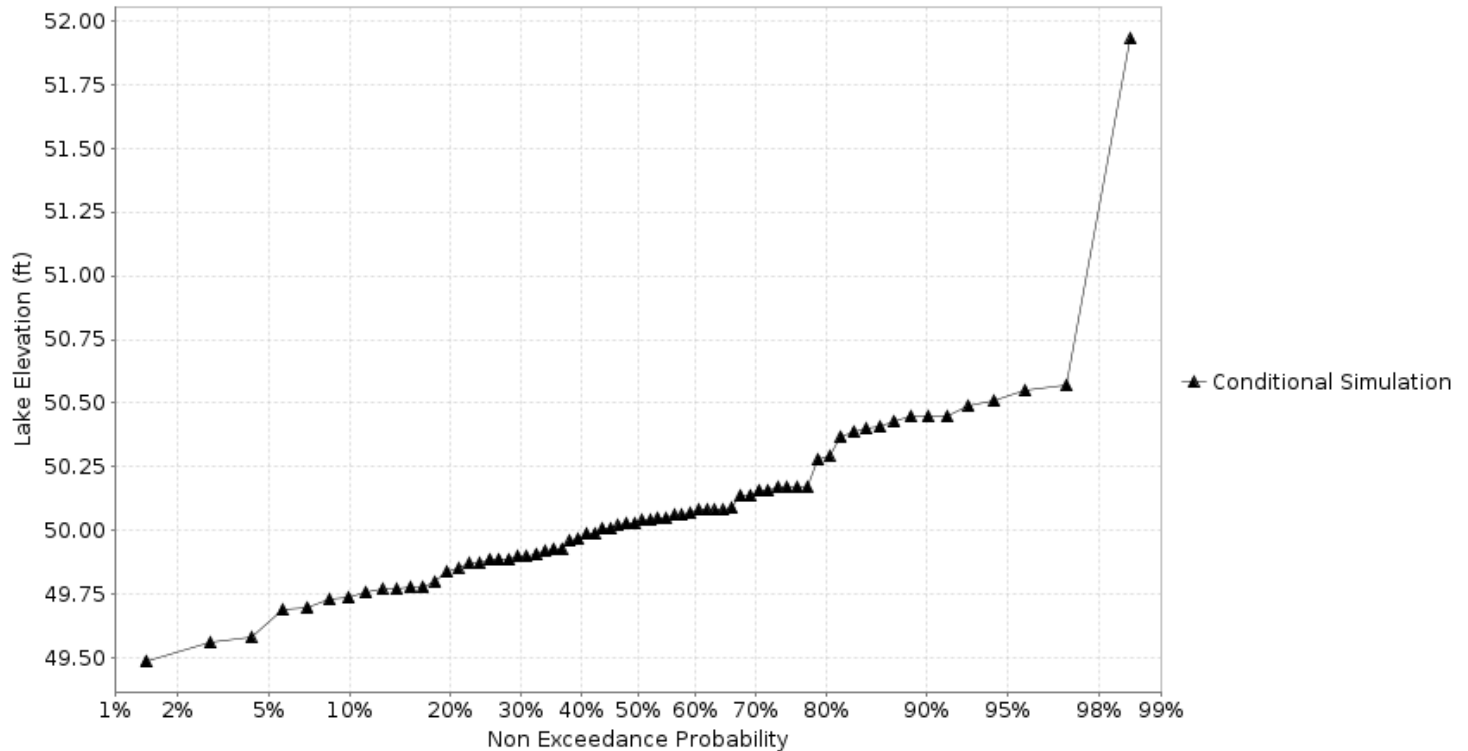


Probability of Falling to Low Lake Levels on the Devils Lake at Devils Lake 5SW-Creel Bay (DCBN8)

Forecast for the period 09/01/2022 - 11/30/2022

This is a conditional simulation based on the conditions as of 06/20/2022

Pumping schedule : 350cfs Jun 1 - Oct 31

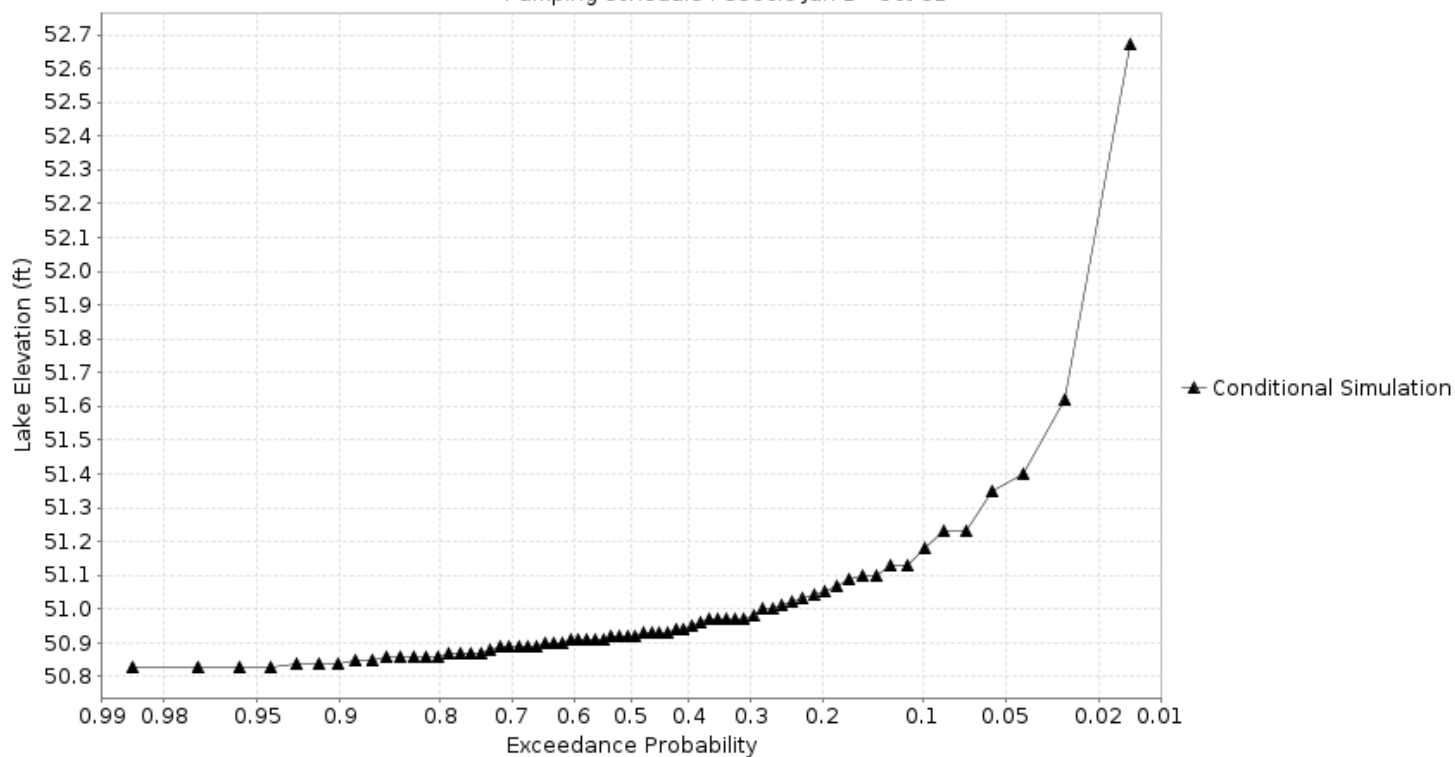


## Probability of Rising to High Lake Levels on the Eastern Stump Lake at Lakota 11S (ESLN8)

Forecast for the period 06/20/2022 - 09/30/2022

This is a conditional simulation based on the conditions as of 06/20/2022

Pumping schedule : 350cfs Jun 1 - Oct 31



## Probability of Falling to Low Lake Levels on the Eastern Stump Lake at Lakota 11S (ESLN8)

Forecast for the period 09/01/2022 - 11/30/2022

This is a conditional simulation based on the conditions as of 06/20/2022

Pumping schedule : 350cfs Jun 1 - Oct 31

