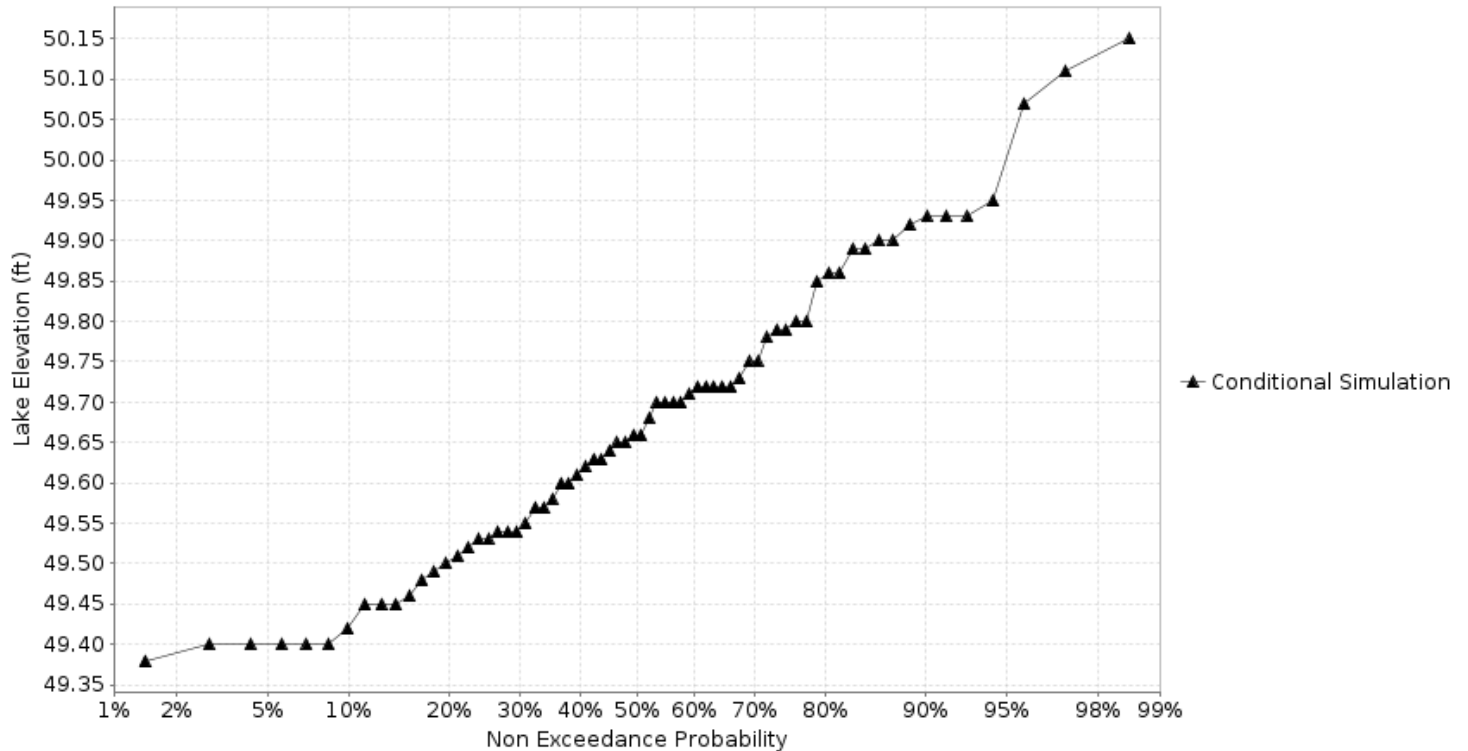


Devils Lake Basin

“Exceedance Probability”
graphics will be available seasonally for the late
January through July issuances.

Probability of Falling to Low Lake Levels on the Devils Lake at Devils Lake 5SW-Creel Bay (DCBN8)
Forecast for the period 09/01/2022 - 11/30/2022
This is a conditional simulation based on the conditions as of 08/22/2022
Pumping schedule : 350cfs Jun 1 - Oct 31



“Exceedance Probability” graphics will be available seasonally for the late January through July issuances.

Probability of Falling to Low Lake Levels on the Eastern Stump Lake at Lakota 11S (ESLN8)
Forecast for the period 09/01/2022 - 11/30/2022
This is a conditional simulation based on the conditions as of 08/22/2022
Pumping schedule : 350cfs Jun 1 - Oct 31

