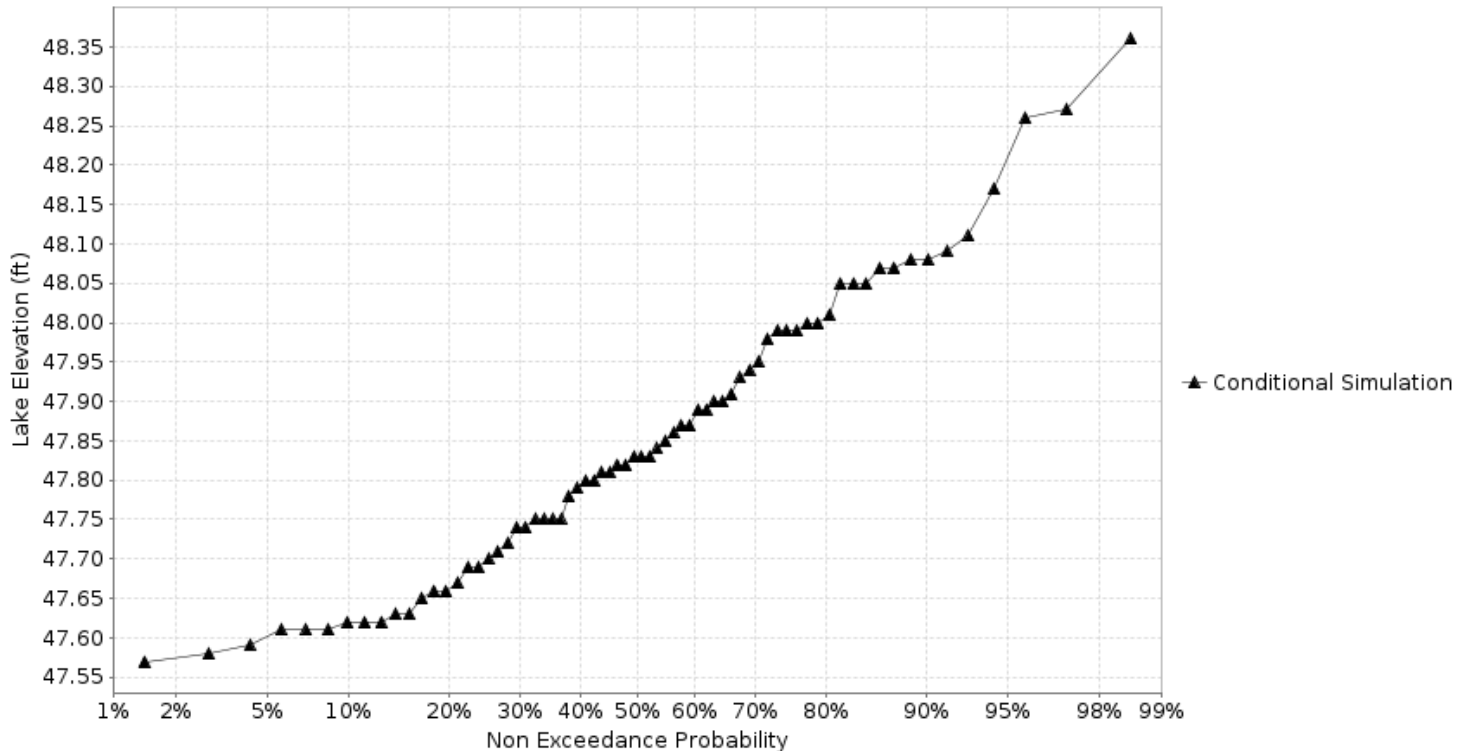


# Devils Lake Basin

“Exceedance Probability”  
graphics will be available seasonally for the late  
January through July issuances.

Probability of Falling to Low Lake Levels on the Devils Lake at Devils Lake 5SW-Creel Bay (DCBN8)  
Forecast for the period 09/01/2025 - 11/30/2025  
This is a conditional simulation based on the conditions as of 08/18/2025  
Pumping schedule : 350cfs May 15 - Oct 30



“Exceedance Probability”  
graphics will be available seasonally for the late  
January through July issuances.

