

# January 2022 Climate Summary

## FLAGSTAFF

Average Temperature	Departure from Normal	Monthly Precip	% of Normal Precip
<b>30.7°</b>	<b>+0.2°</b>	<b>0.17"</b>	<b>8%</b>

## PRESCOTT

Average Temperature	Departure from Normal	Monthly Precip	% of Normal Precip
<b>39.6°</b>	<b>-0.1°</b>	<b>0.46"</b>	<b>38%</b>

## WINSLOW

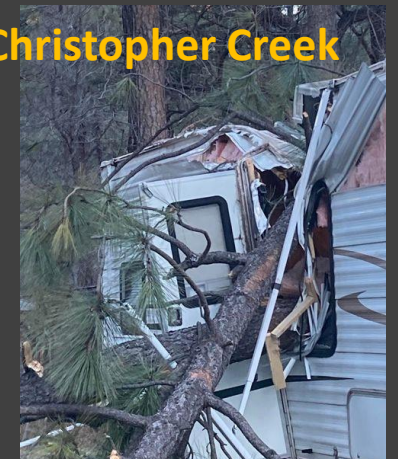
Average Temperature	Departure from Normal	Monthly Precip	% of Normal Precip
<b>35.5°</b>	<b>-0.4°</b>	<b>0.20"</b>	<b>39%</b>

The new year started off very cold with sub-freezing highs and below-zero lows over the high country on the 1<sup>st</sup> and 2<sup>nd</sup>, along with some light snow. The remainder of the month saw temperatures near normal. Very little precipitation fell, with much below normal monthly totals. The weather pattern was favorable for gusty northeast winds at times, including on the night of the 27<sup>th</sup> when damaging wind occurred just south of the Mogollon Rim including Pine and Christopher Creek. Widespread power outages were reported in this area.



**Trees Down in Christopher Creek**

Photos: Payson Roundup



## January Snow Totals / Rankings:

Flagstaff Airport	3.0 inches	18 <sup>th</sup> Least Snowy
Payson	0.0 inches	Least Snowy <small>(Tied w/ 12 other years)</small>
Show Low Airport	2.0 inches	16 <sup>th</sup> Least Snowy
Prescott	1.3 inches	54 <sup>th</sup> Least Snowy



FLAGSTAFF, AZ

NATIONAL WEATHER SERVICE