



# Drought Information Statement for North and Central Texas

Valid December 9, 2023

Issued By: NWS Fort Worth

Contact Information: [sr-fwd.webmaster@noaa.gov](mailto:sr-fwd.webmaster@noaa.gov)

- This product will be updated January 4, 2024 or sooner if drought conditions change significantly.
- Please see all currently available products at <https://drought.gov/drought-information-statements>.
- Please visit <https://www.weather.gov/fwd/DroughtInformationStatement> for previous statements.



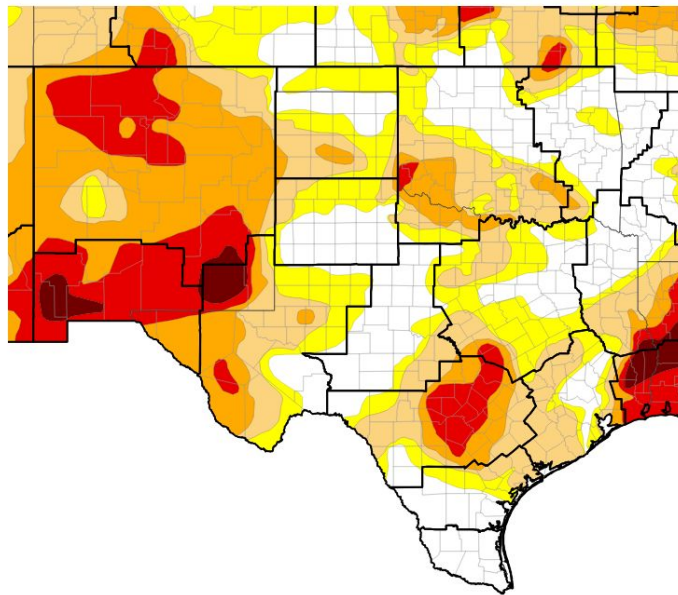


# U.S. Drought Monitor

Link to the [latest U.S. Drought Monitor](#) for North and Central Texas

- Adequate autumn rainfall improved drought conditions across the region.
- Drought Intensity and Extent
  - D4 (Exceptional Drought): ended in late October, after persisting since the beginning of August
  - D3 (Extreme Drought): only a small enclave remains in Central Texas, including Killeen and Fort Cavazos
  - D2 (Severe Drought): Temple and Lampasas in Central Texas, Nocona in North Texas
  - D1 (Moderate Drought): some areas west of the I-35 corridor and portions of the Brazos Valley

U.S. Drought Monitor



U.S. Drought Monitor



Source(s): NDMC, NOAA, USDA; image courtesy of Drought.gov

Data Valid: 12/05/23



National Oceanic and  
Atmospheric Administration  
U.S. Department of Commerce

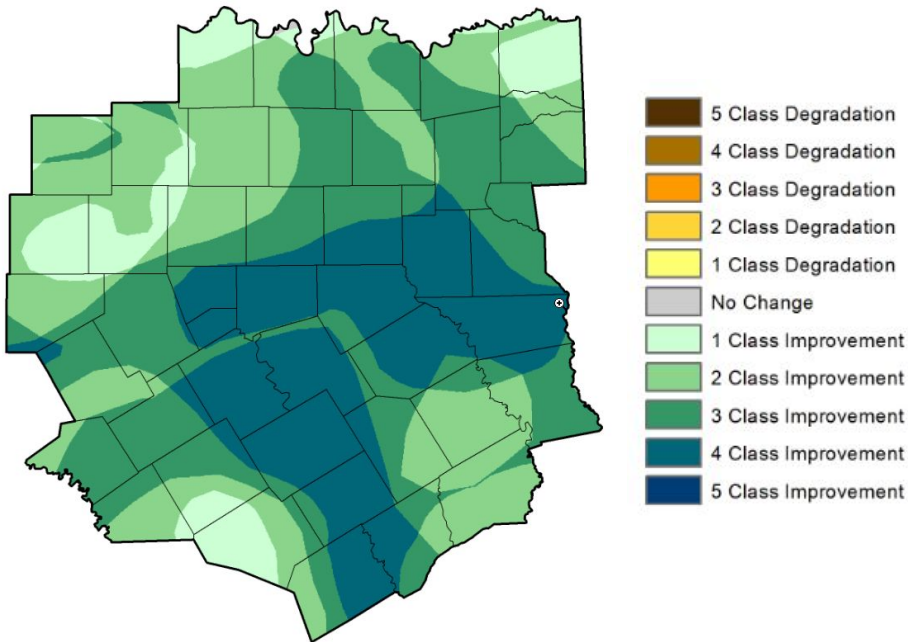
National Weather Service  
Fort Worth



# Recent Change in Drought Intensity

Link to the latest [12-week change map](#) for North and Central Texas

- 12-Week Drought Monitor Class Change
  - Drought conditions intensified across nearly the entire region during the summer.
  - But during autumn, many locations experienced 3- to 4-category improvements.



U.S. Drought Monitor 12-week change map  
(September 12 to December 5)

Image from [National Drought Mitigation Center \(NDMC\)](#)

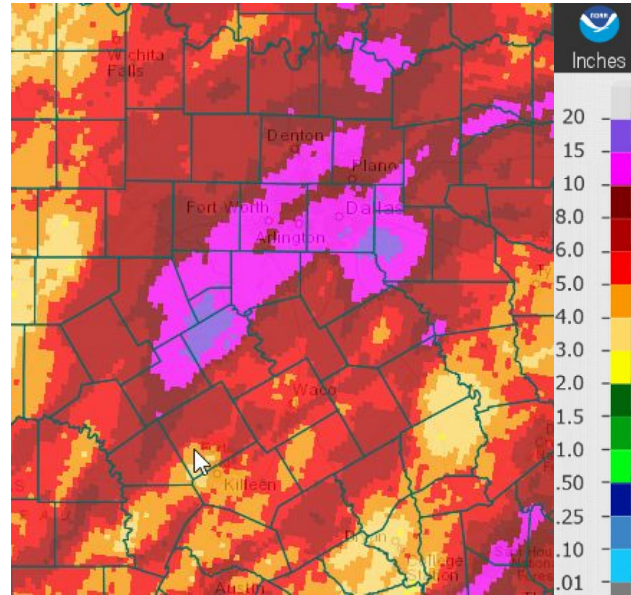




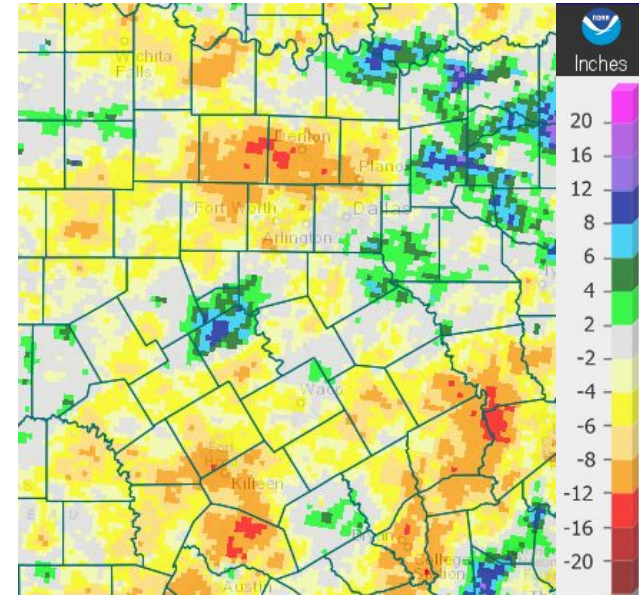


# Precipitation

- The image on the left shows October rainfall. Many locations (in red) received more than 5 inches, and a few spots (in purple) topped 15 inches. Normal values range from 3 inches in western North Texas to 5 inches in East Texas.
- The image on the right shows 2023 departures from normal precipitation. Despite surplus autumn rainfall, some locations are still well below normal for the year to date. Red areas indicate year-to-date deficits in excess of 12 inches.



October Precipitation Totals



Year-to-Date Departure from Normal Precipitation

Imagery from [Advanced Hydrologic Prediction Service \(AHPS\)](#)



# Summary of Impacts

Links: See/submit [Condition Monitoring Observer Reports \(CMOR\)](#) and view the [Drought Impact Reporter](#)

## Hydrologic Impacts

- Some reservoirs continue to struggle, but Lake Waco more than doubled in volume during October.

## Agricultural Impacts

- Autumn rainfall allowed for planting, but the fall growing season was cut short with early freezes.

## Fire Hazard Impacts

- Winter dormancy is ongoing. Throughout the cold season, this dormant vegetation will remain conducive to fire initiation and spread.

## Other Impacts

- Where drought remains, it is now over 2 years in duration, resulting in deep soil moisture deficits that are adversely impacting native trees.

## Mitigation Actions

- Water conservation measures are widespread. Since water restrictions vary, residents should keep informed with the current guidelines from their municipality or water utility provider.





# Hydrologic Conditions and Impacts

- Most reservoirs are at least 80% of capacity, but some continue to struggle, particularly from the Big Country into Central Texas.
  - Lake levels at Belton and Stillhouse Hollow have risen but are still only around 60% full.
  - Lake Palo Pinto is only 36% full, and Proctor Lake has fallen below 28%.
- Water Conservation Measures:
  - Dallas and Fort Worth - twice-per-week limit, only hand watering 10 am to 6 pm (for Dallas the daytime limit is only from April to October)
  - Killeen - Stage 2: twice-per-week limit, no outdoor watering from 10 am to 8 pm (identical restrictions for Temple, Belton, Harker Heights, and Copperas Cove)
  - Waco - mandatory water restrictions were lifted on October 30

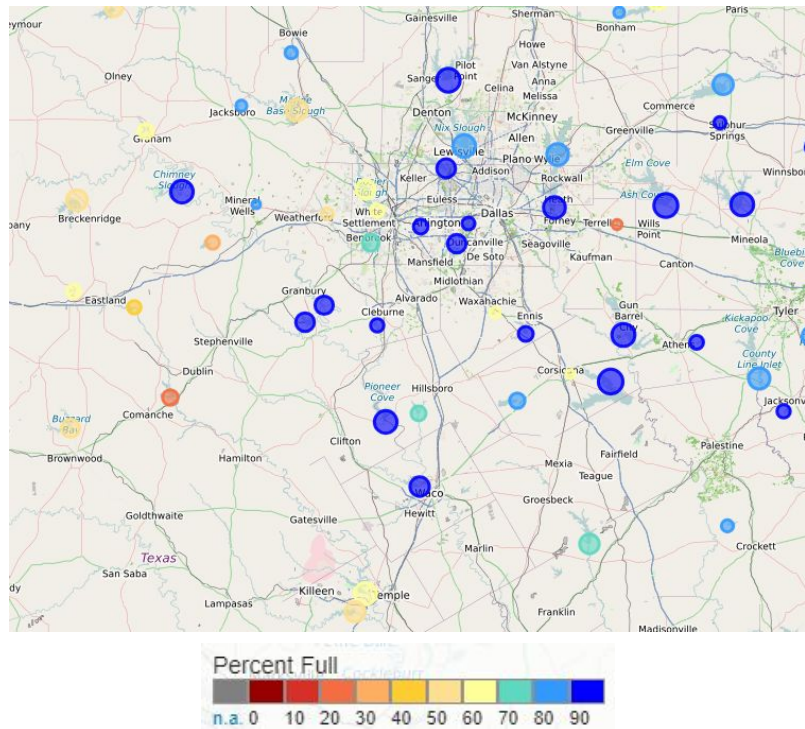


Image from [Texas Water Development Board \(TWDB\)](https://www.twdb.texas.gov/)





# Fire Hazard Impacts

Link to [Wildfire Potential Outlooks from the National Interagency Coordination Center](#).

- Now in winter dormancy, warm season vegetation is conducive to fire initiation and spread.
- The days of greatest concern for wildfires are those that are sunny and warm with low humidity and breezy winds.
- Few burn bans remains, but it is still important to be vigilant about fire usage. Avoid open flames near dry vegetation, and assure all coals and embers are fully extinguished.

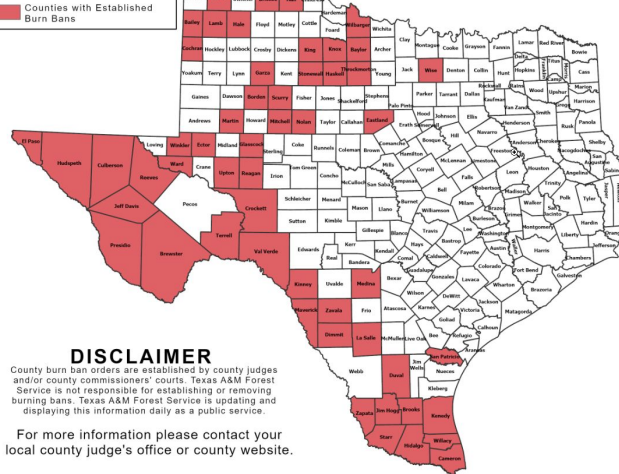
## OUTDOOR BURN BANS

December 08, 2023



Counties without Established Burn Bans  
Counties with Established Burn Bans

Email updates to:  
[burnban@tfs.tamu.edu](mailto:burnban@tfs.tamu.edu)



### DISCLAIMER

County burn ban orders are established by county judges and/or county commissioners' courts. Texas A&M Forest Service is not responsible for establishing or removing burning bans. Texas A&M Forest Service is updating and displaying this information daily as a public service.

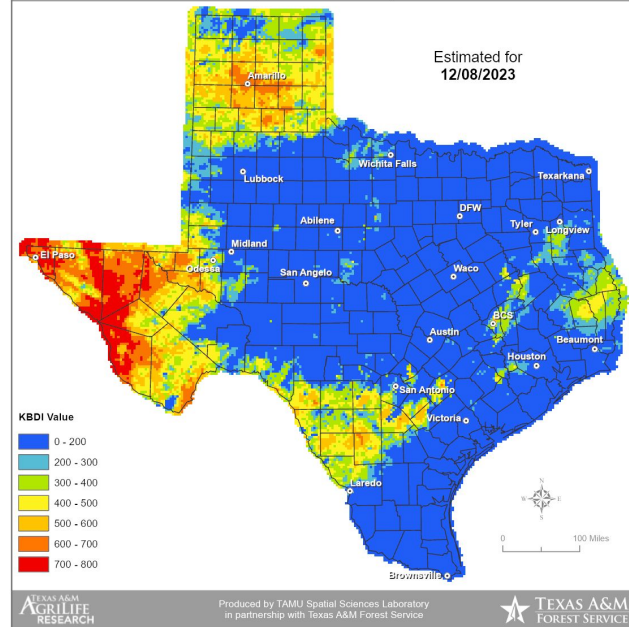
For more information please contact your local county judge's office or county website.

Click [here](#) for the latest map of [Outdoor Burn Bans](#) across Texas.

## Keetch-Byram Drought Index

(4 km x 4 km resolution)

Estimated for  
12/08/2023



The [Keetch-Byram Drought Index \(KBDI\)](#) is designed to assess fire danger.



National Oceanic and  
Atmospheric Administration  
U.S. Department of Commerce

National Weather Service  
Fort Worth





# Long-Range Outlooks

The latest monthly and seasonal outlooks can be found on the [CPC homepage](#)

- El Niño may enhance precipitation amounts throughout the cold season.
- As a result, precipitation outlooks through the winter favor above normal precipitation.

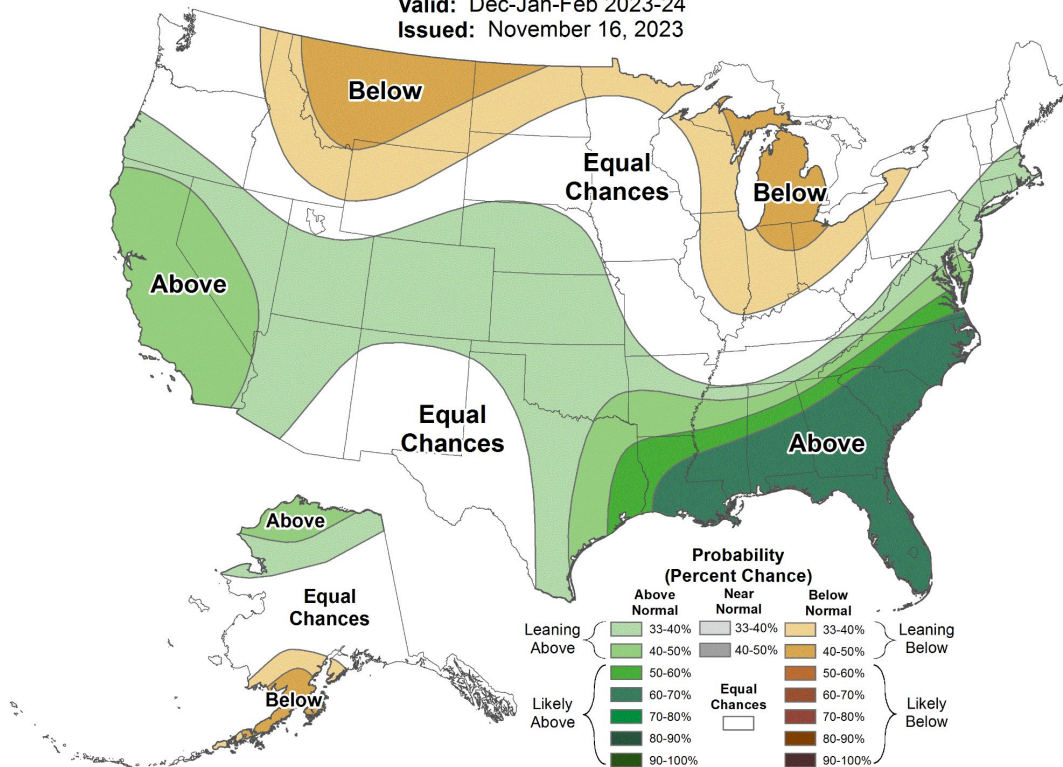


## Seasonal Precipitation Outlook



Valid: Dec-Jan-Feb 2023-24

Issued: November 16, 2023



National Oceanic and  
Atmospheric Administration

U.S. Department of Commerce

National Weather Service  
Fort Worth





# Drought Outlook

The latest monthly and seasonal outlooks can be found on the [CPC homepage](#)

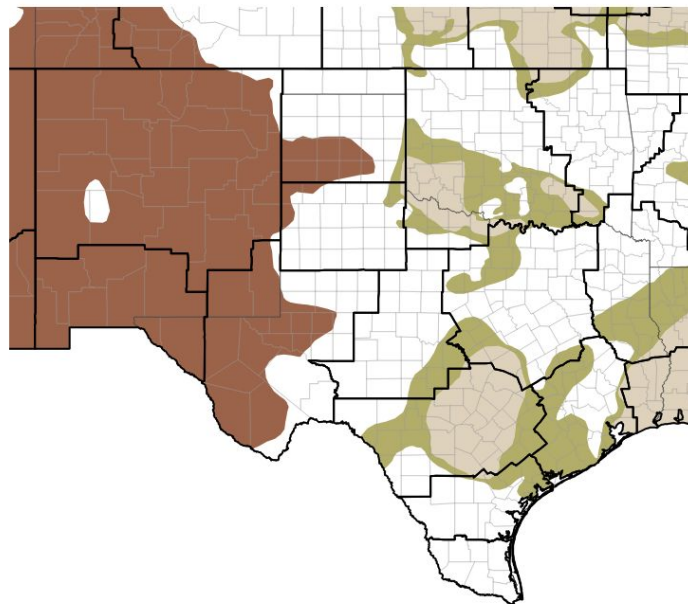
- Although outlooks continue to favor above normal precipitation, it will take some time to reverse the extraordinary deficits across the region.
- Some drought improvement has already occurred and additional improvement is projected during the winter. However, some of the remaining areas of drought are likely to persist into the upcoming spring.

Links to the latest:

[Climate Prediction Center \(CPC\) Monthly Drought Outlook](#)

[Climate Prediction Center \(CPC\) Seasonal Drought Outlook](#)

## Seasonal (3-Month) Drought Outlook



Drought Is Predicted To...



Source(s): Climate Prediction Center; image courtesy of Drought.gov

Data Valid: 11/30/23



National Oceanic and  
Atmospheric Administration  
U.S. Department of Commerce

National Weather Service  
Fort Worth