



# Drought Information Statement for Western CO & Eastern UT

Valid May 1, 2025

Issued By: WFO Grand Junction, CO

Contact Information:

- This product will be updated if drought conditions change significantly.
- Please see all currently available products at <https://drought.gov/drought-information-statements>.
- Please visit <https://www.weather.gov/gjt/DroughtInformationStatement> for previous statements.
- Please visit <https://www.drought.gov/drought-status-updates/> for regional drought status updates.

- Expansion of D3 - Across portions of Mesa, Delta and Montrose counties in western Colorado





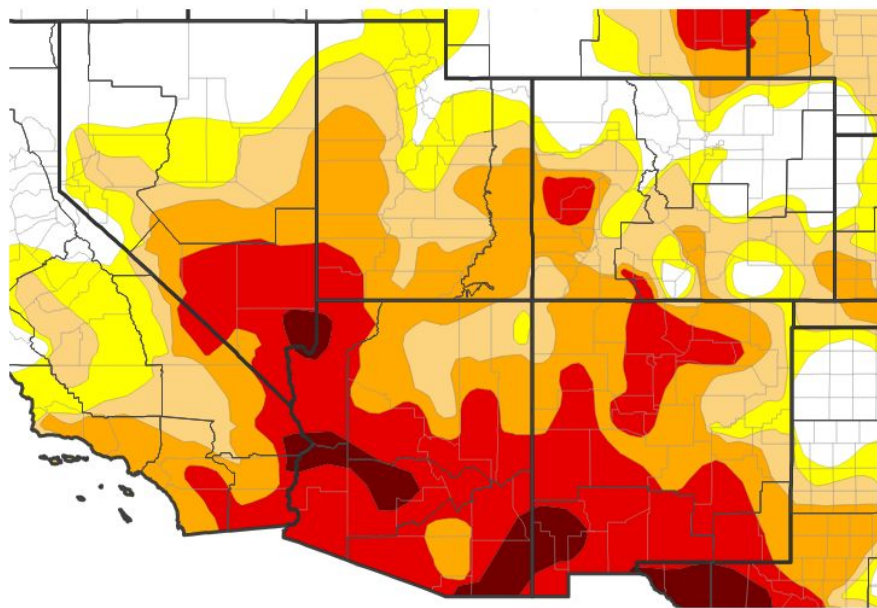
# U.S. Drought Monitor

Link to the [latest U.S. Drought Monitor](#) for the Intermountain West

## Drought intensity and Extent:

- **D3 (Extreme Drought)**: Introduced over portions of Mesa, Delta and Montrose counties
- **D2 (Severe Drought)**: Expansion nosing up the Colorado River Basin
- **D1 (Moderate Drought)**: Filling in lower elevations across the Gunnison and Roaring Fork River Basins
- **D0: (Abnormally Dry)**: Introduced drought conditions over high terrain in Gunnison, Eagle and southern Routt counties

U.S. Drought Monitor



U.S. Drought Monitor



Source(s): NDMC, NOAA, USDA; image courtesy of Drought.gov

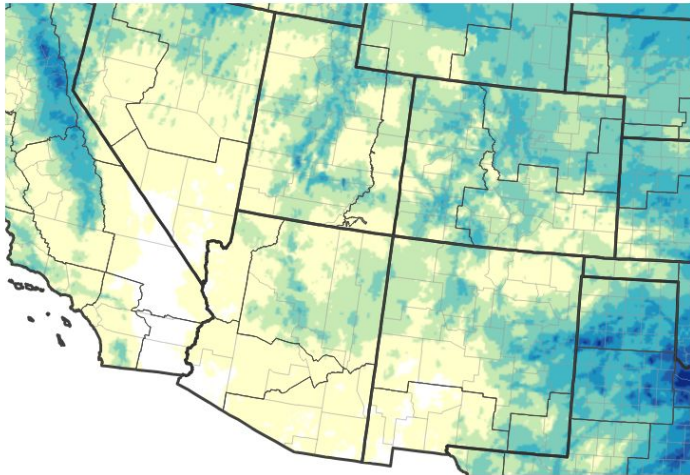
Data Valid: 04/29/25





# Precipitation

NWPS 30-Day Precipitation Accumulations (inches)



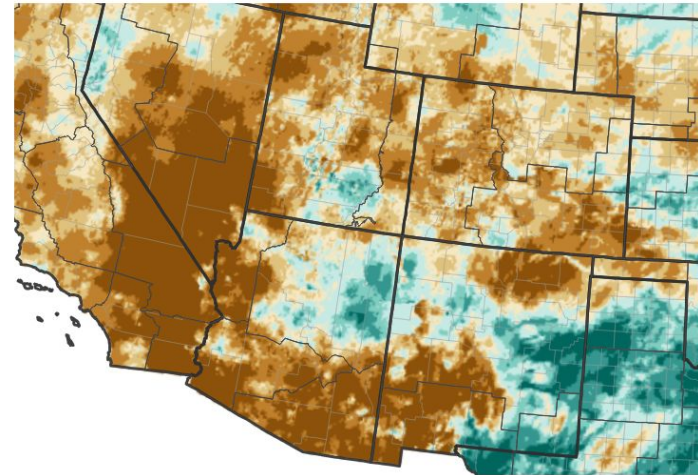
Inches of Precipitation



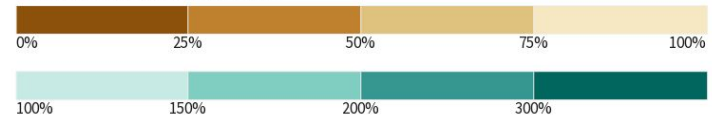
Source(s): National Weather Service National Water Prediction Service;  
image courtesy of Drought.gov

Data Valid: 04/29/25

30-Day Precipitation: Percent of PRISM Normal



Percent of Normal Precipitation (%)



Source(s): National Weather Service National Water Prediction Service;  
image courtesy of Drought.gov

Data Valid: 04/30/25

- Below normal precipitation was observed across much of eastern Utah and western Colorado, through the month of April



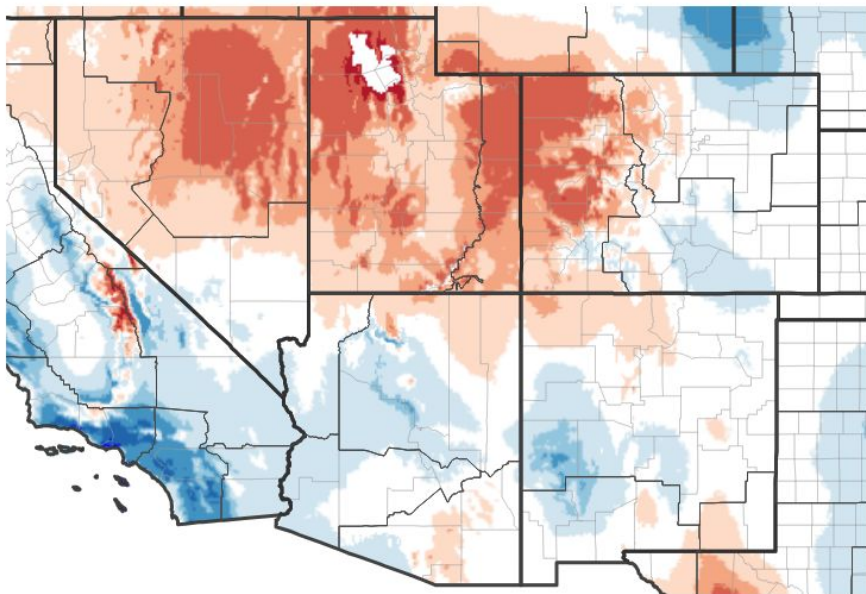




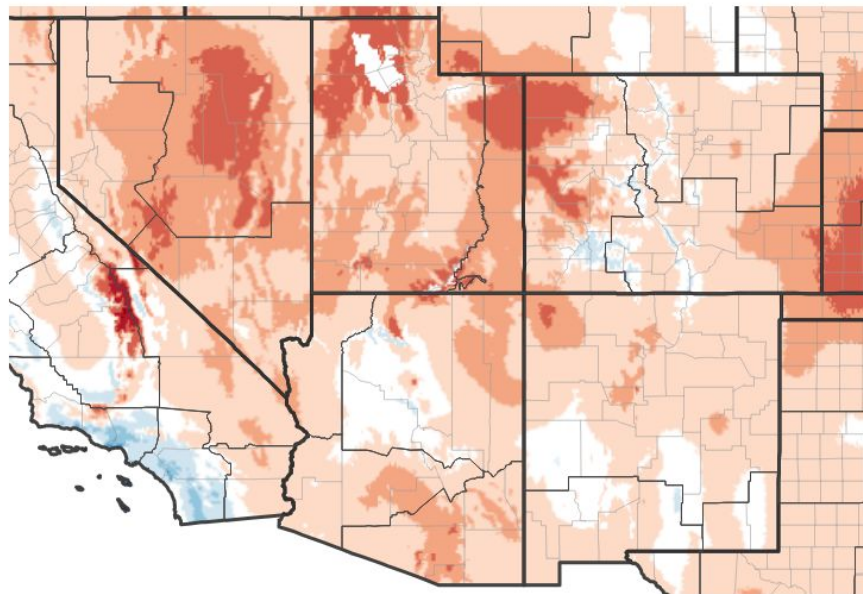
# Temperature

- Overall, April was an **abnormally warm month** across eastern UT and western CO with the more notable anomalies across northeast UT and northwest CO

## 7-Day Temperature Anomaly



## 30-Day Temperature Anomaly



Departure from Normal Max Temperature (°F)



National Oceanic and  
Atmospheric Administration  
U.S. Department of Commerce

Source(s): NOAA's National Centers for Environmental Information;  
image courtesy of Drought.gov

Data Valid: 04/27/25

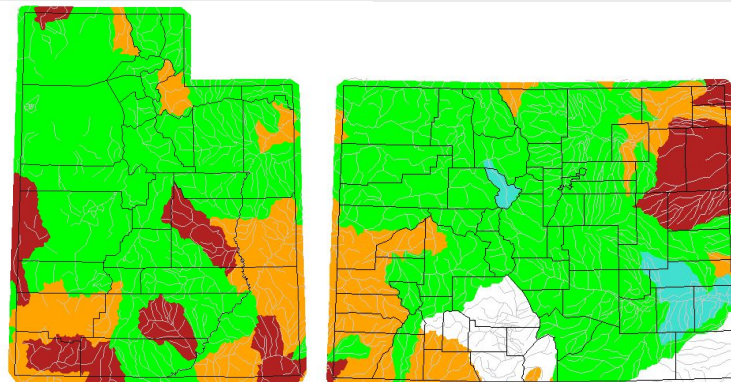
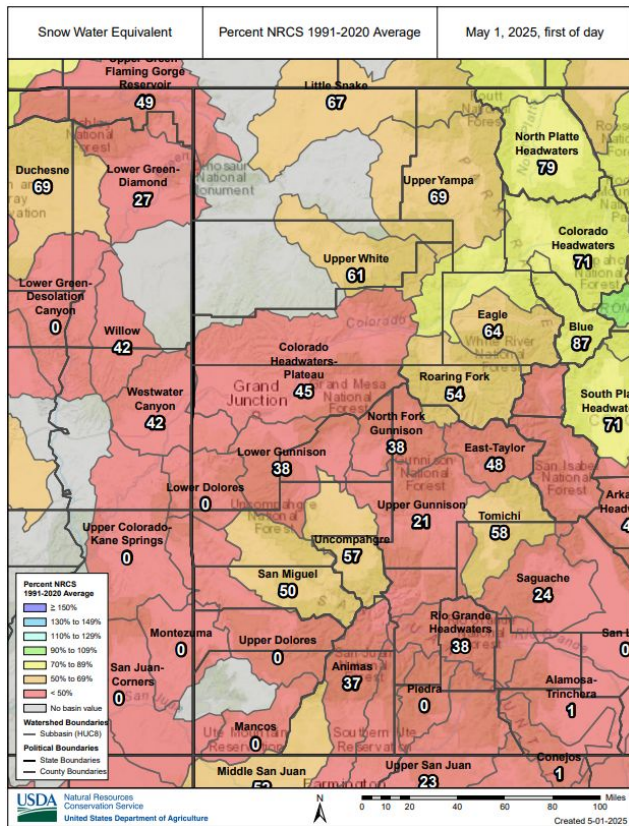


National Weather Service  
Grand Junction, CO





# Hydrologic Conditions and Impacts



USGS 7 day average streamflow HUC map valid for the State of CO & UT  
Data Valid: 04 30 2025

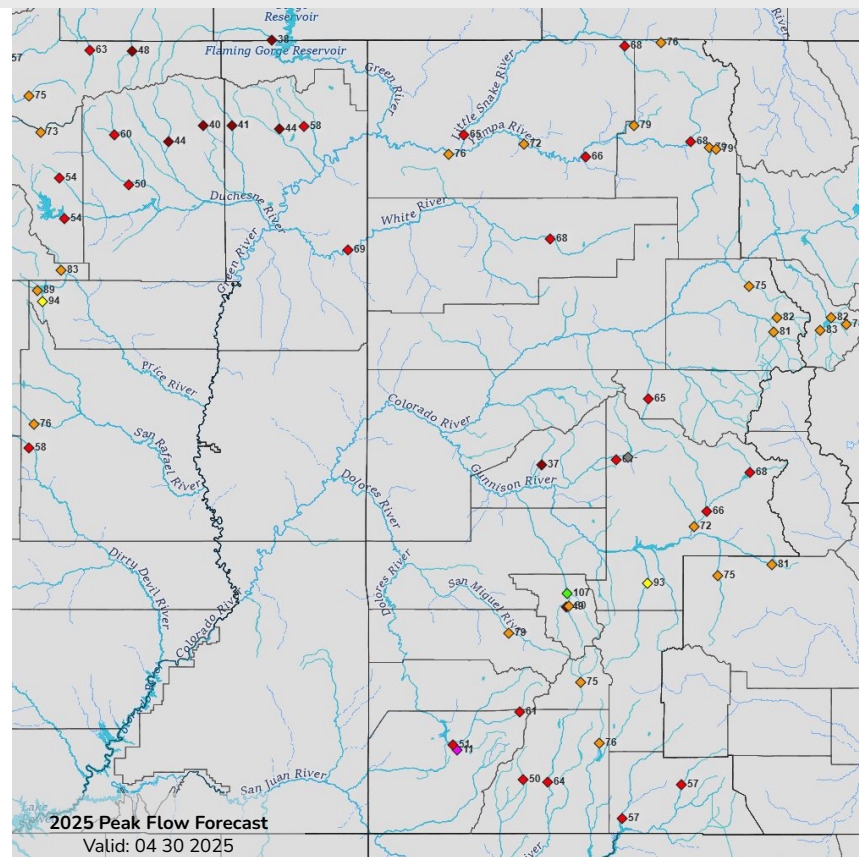
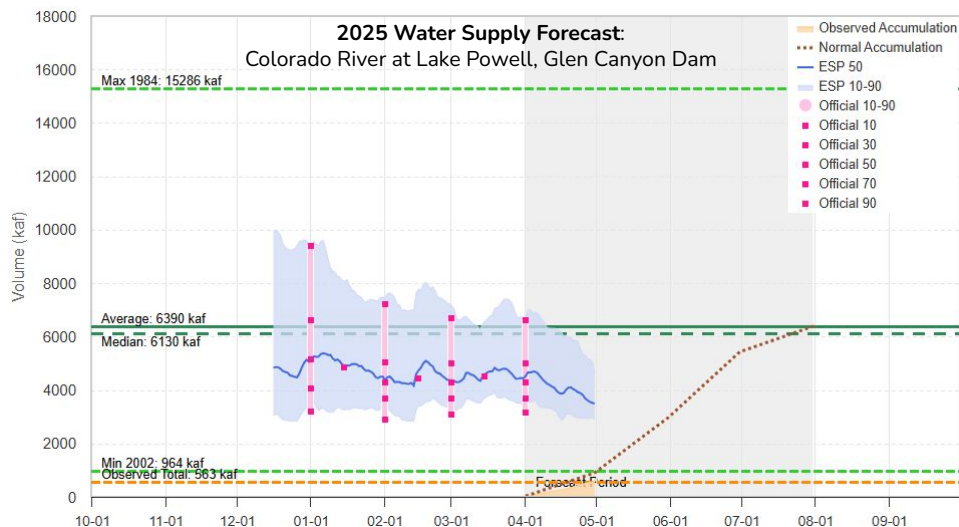
- Snow Water Equivalent - as percent of Median
  - In general, **peak in SWE** was observed **earlier** than normal across the Upper CO River Basin
  - **Warm** and **drier** than normal April resulted in **accelerated snowmelt** across the CWA
  - Current **SWE** conditions are **below normal** across all of eastern UT and western CO river basins
- Streamflow mirrors seasonal snowpack with southeast UT and southwest CO rivers running **bellow to well below normal**





# Water Supply

- Spring runoff & water supply forecasts **declined** throughout April due to the early onset/acceleration of snowmelt
- Peak flow forecasts are **below average** across the region, with the lowest percentiles centered over the Upper & Lower San Juan River basins

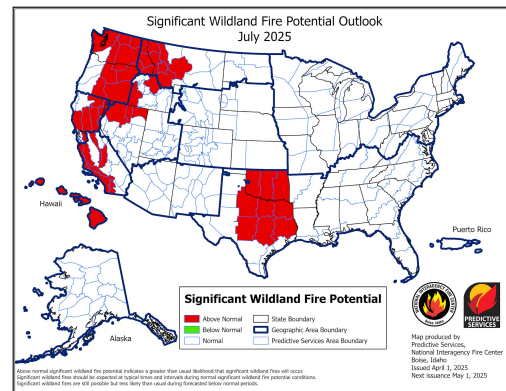
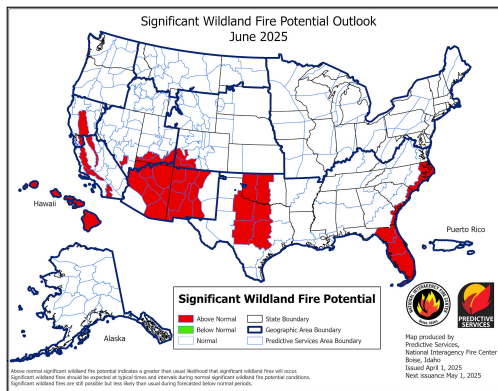
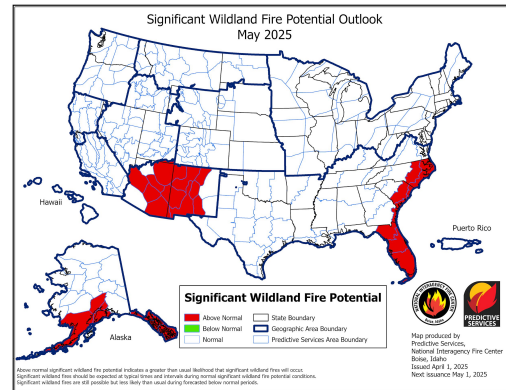
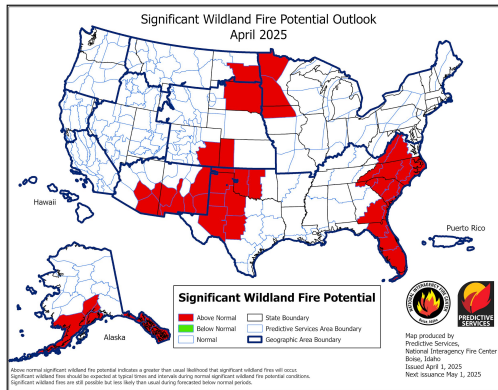




# Fire Hazard Impacts

Link to [Wildfire Potential Outlooks from the National Interagency Coordination Center.](#)

- Significant wildfire potential outlooks begins to show **above normal fire potential** expanding into southwest Colorado and southeast Utah by **June 2025**



National Oceanic and  
Atmospheric Administration

U.S. Department of Commerce



National Weather Service  
Grand Junction, CO



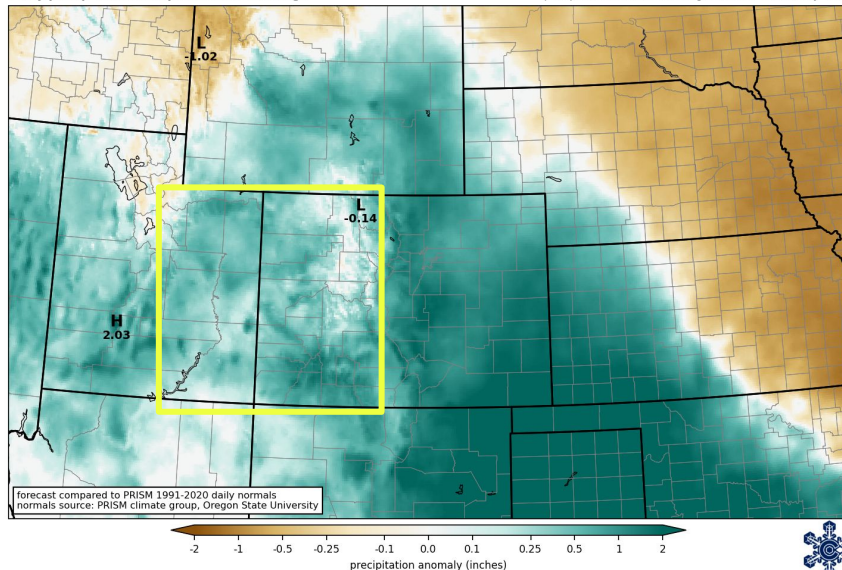


# Seven Day Precipitation Forecast

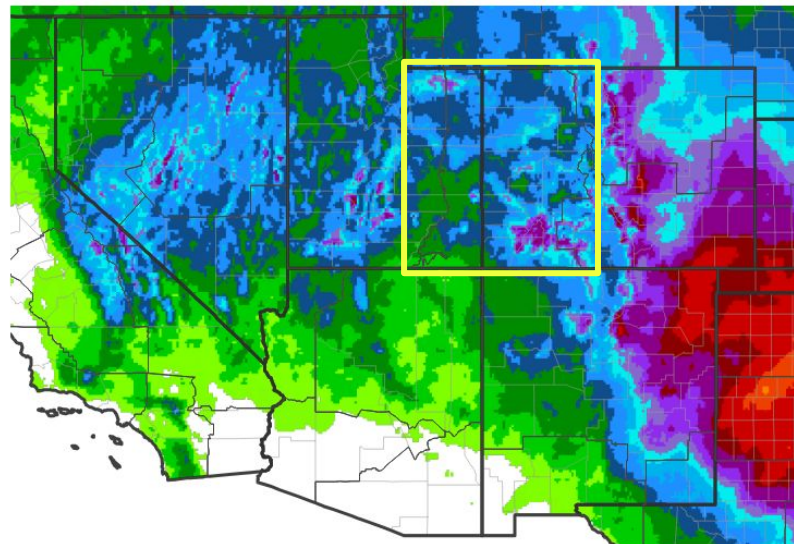
- Several systems will return the chance for widespread precipitation over the next 7 days
- Current forecast favors the Front Range and areas to the southeast for higher precipitation totals, however, positive anomalies are still present across majority of the CWA

NOAA Weather Prediction Center  
7-day precip forecast departure from average

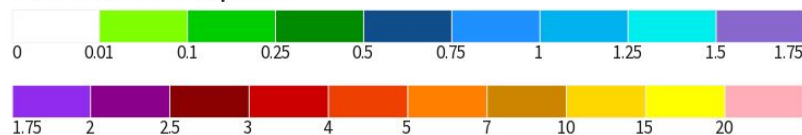
forecast issued 1200 UTC Thu 01 May 2025  
precipitation in 168 hrs ending 1200 UTC Thu 08 May 2025



## 7-Day Quantitative Precipitation Forecast for May 1, 2025–May 8, 2025



Predicted Inches of Precipitation



Source(s): National Weather Service Weather Prediction Center; image courtesy of Drought.gov

Last Updated: 05/01/25



National Oceanic and  
Atmospheric Administration

U.S. Department of Commerce



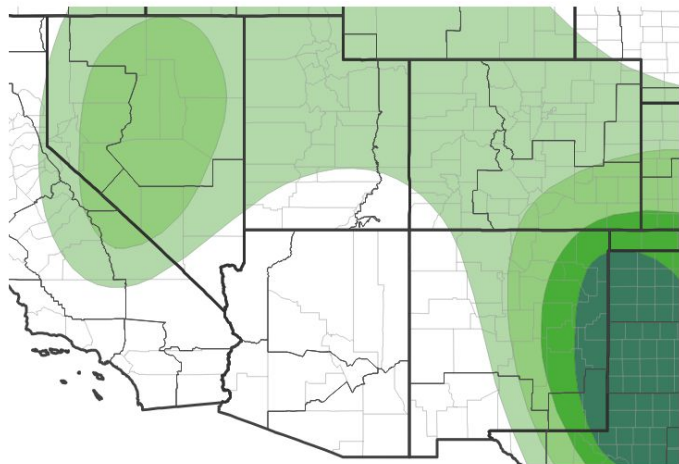
National Weather Service  
Grand Junction, CO



# Long-Range Outlooks

The latest monthly and seasonal outlooks can be found on the [CPC homepage](#)

## Monthly Precipitation Outlook for May 1, 2025–May 31, 2025



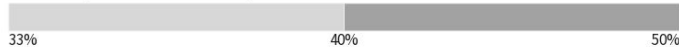
Probability of Below-Normal Precipitation



Probability of Above-Normal Precipitation



Probability of Near-Normal Precipitation

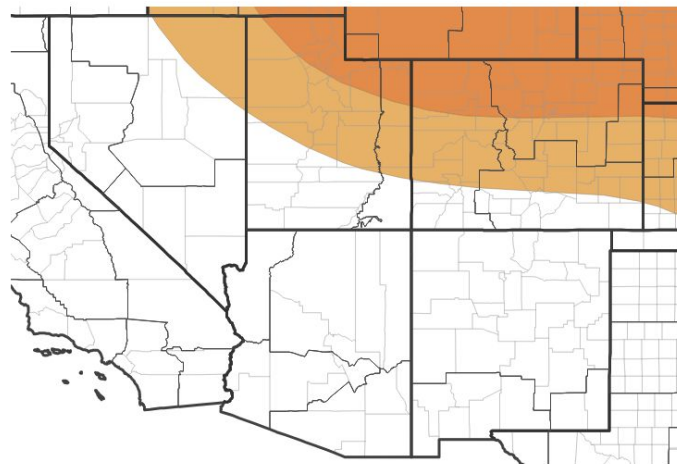


Source(s): Climate Prediction Center; image courtesy of Drought.gov

Last Updated: 04/30/25

- Up to **40%** probability of **above-normal precipitation** in May
- **Above normal temperatures** are probable across northern zones, with a decrease probability of above-normal temperatures moving south (over the Four Corners area)

## Monthly Temperature Outlook for May 1, 2025–May 31, 2025



Probability of Below-Normal Temperatures



Probability of Above-Normal Temperatures



Probability of Near-Normal Temperatures



Source(s): Climate Prediction Center; image courtesy of Drought.gov

Last Updated: 04/30/25



National Oceanic and  
Atmospheric Administration  
U.S. Department of Commerce



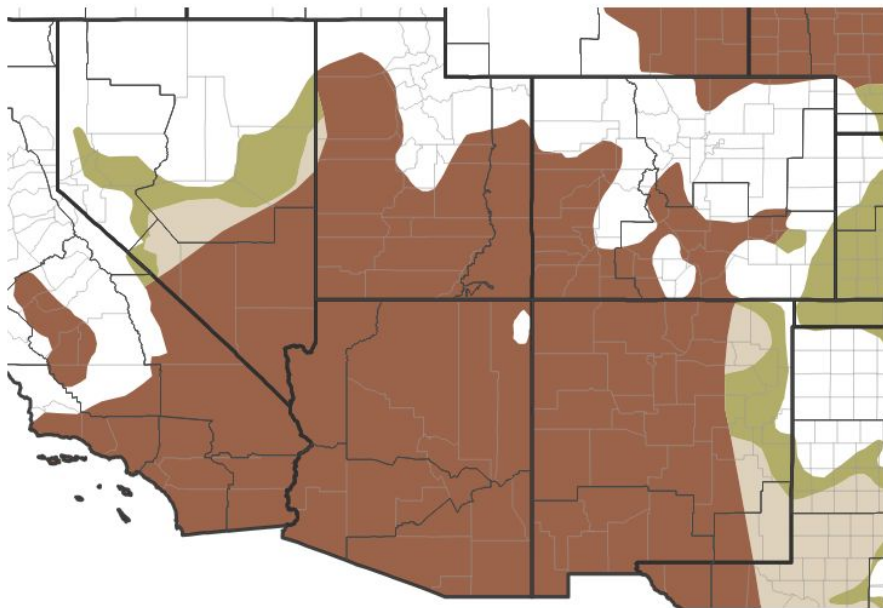
National Weather Service  
Grand Junction, CO



# Drought Outlook

The latest monthly and seasonal outlooks can be found on the [CPC homepage](#)

## 1-Month Drought Outlook for May 1, 2025–May 31, 2025



Drought Is Predicted To...

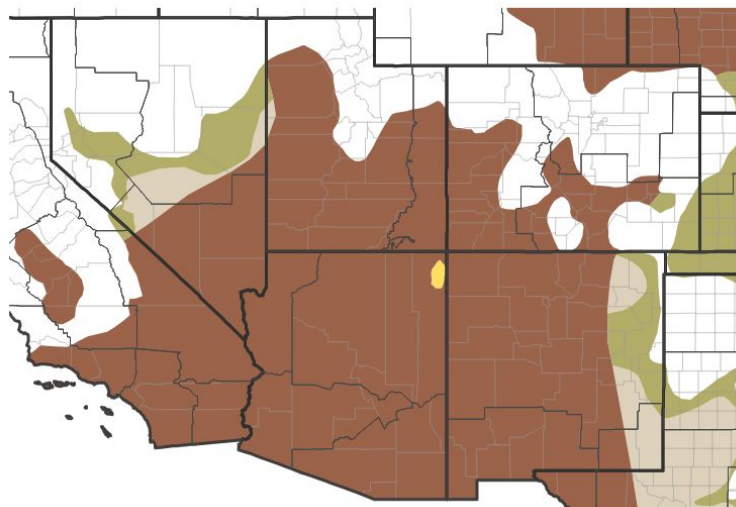


Source(s): Climate Prediction Center; image courtesy of Drought.gov

Last Updated: 04/30/25

- Anticipate **drought conditions to persist** through the month of **May** and into **summer**

## Seasonal (3-Month) Drought Outlook for April 30, 2025–July 31, 2025



Drought Is Predicted To...



Source(s): Climate Prediction Center; image courtesy of Drought.gov

Last Updated: 04/30/25



National Oceanic and  
Atmospheric Administration  
U.S. Department of Commerce



National Weather Service  
Grand Junction, CO





# Summary of Impacts

Links: See/submit [Condition Monitoring Observer Reports \(CMOR\)](#) and view the [Drought Impacts Reporter](#)

## Hydrologic Impacts

- Gov. Spencer Cox (Utah) issued an Executive Order declaring a state of emergency due to drought conditions combined with **low streamflow forecasts and increased water demands** with warmer temperatures for San Juan, Grand and Uintah counties

## Agricultural Impacts

- There are no known impacts at this time

## Fire Hazard Impacts

- There are no known impacts at this time

## Other Impacts

- There are no known impacts at this time

## Mitigation Actions

- Please refer to your municipality and/or water provider for mitigation information.

