



Drought Information Statement for Western CO & Eastern UT

Valid May 8, 2025

Issued By: WFO Grand Junction, CO

Contact Information:

- This product will be updated if drought conditions change significantly.
- Please see all currently available products at <https://drought.gov/drought-information-statements>.
- Please visit <https://www.weather.gov/gjt/DroughtInformationStatement> for previous statements.
- Please visit <https://www.drought.gov/drought-status-updates/> for regional drought status updates.

- D3 persists across west-central Colorado
- D0 reintroduced across northwest Colorado and northeast Utah where conditions are quickly worsening due to an abnormally dry April





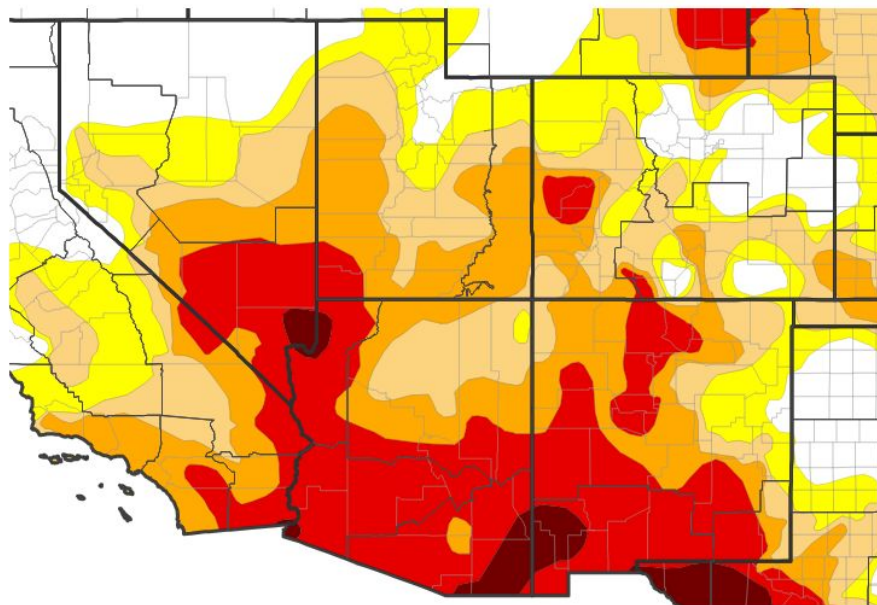
U.S. Drought Monitor

Link to the [latest U.S. Drought Monitor](#) for the Intermountain West

Drought intensity and Extent:

- **D3 (Extreme Drought)**: Remains over portions of Mesa, Delta and Montrose counties
- **D2 (Severe Drought)**: Persists across much of east/southeast Utah and west to southwest Colorado
- **D1 (Moderate Drought)**: Expansion nosing along the spine of the Gore Range
- **D0: (Abnormally Dry)**: Reintroduced drought conditions across northwest Colorado and northeast Utah

U.S. Drought Monitor



U.S. Drought Monitor



Source(s): NDMC, NOAA, USDA; image courtesy of Drought.gov

Data Valid: 05/06/25





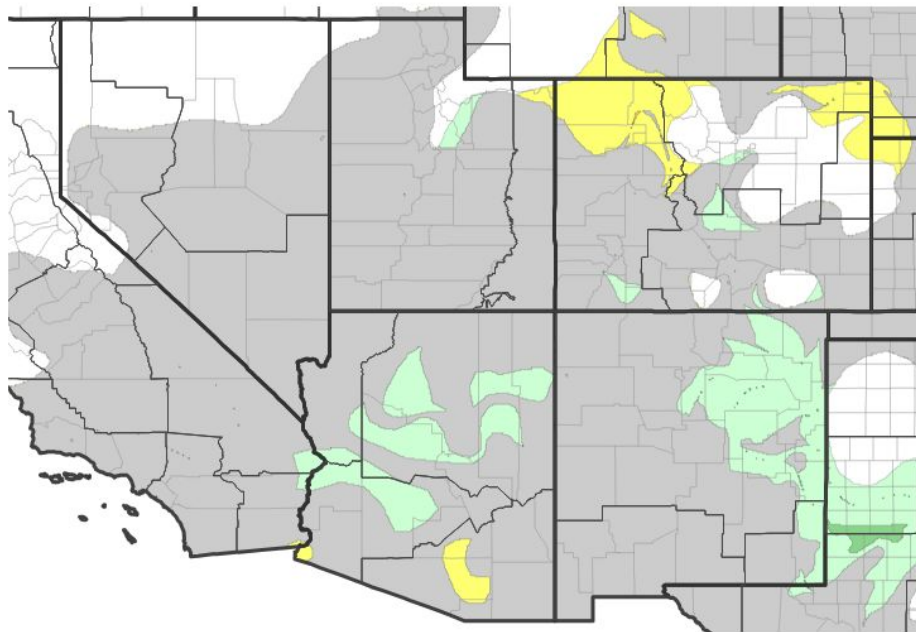
Recent Change in Drought Intensity

Link to the latest [4-week change map](#) for WFO Grand Junction, CO

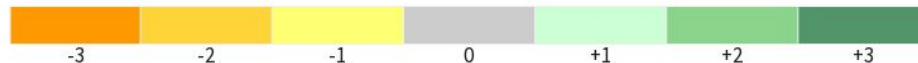
One Week Drought Monitor Class Change:

- *Drought Worsened:* One class degradation across northwest Colorado into northeast Utah
- *Drought Improved:* 1 class improvement across portions of La Plata and Archuleta counties in southwest Colorado

U.S. Drought Monitor 1-Week Change Map



Drought Change Since Last Week



Source(s): NDMC, NOAA, USDA; image courtesy of Drought.gov

Data Valid: 05/06/25



National Oceanic and
Atmospheric Administration
U.S. Department of Commerce

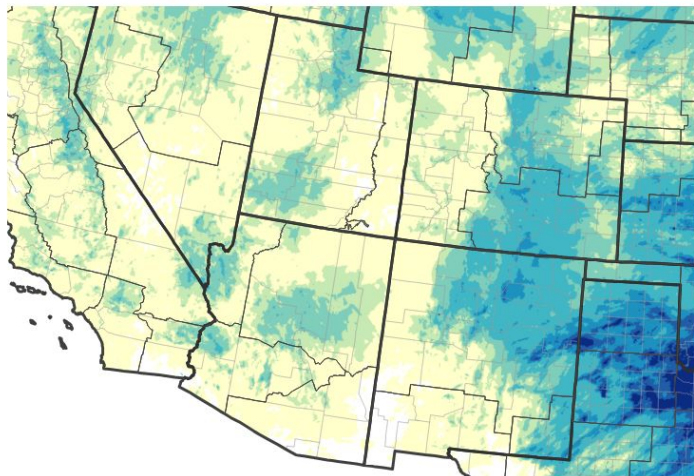


National Weather Service
Grand Junction, CO



Precipitation

30-Day Precipitation Accumulations (Inches)



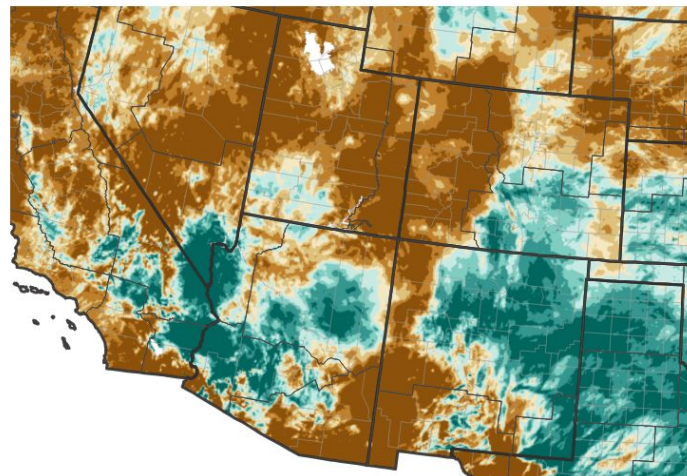
Inches of Precipitation



Source(s): National Weather Service Multi-Radar Multi-Sensor System;
image courtesy of Drought.gov

Last Updated: 05/08/25

30-Day Percent of Normal Precipitation



Percent of Normal Precipitation (%)



Source(s): National Weather Service Multi-Radar Multi-Sensor System;
image courtesy of Drought.gov

Last Updated: 05/08/25

- Below normal precipitation was observed across much of eastern Utah and western Colorado, through the month of April



National Oceanic and
Atmospheric Administration
U.S. Department of Commerce



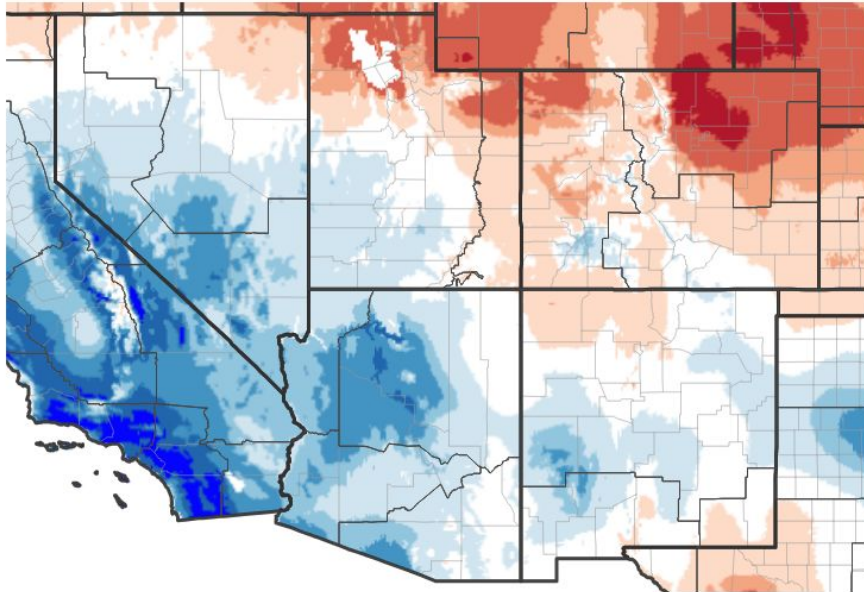
National Weather Service
Grand Junction, CO



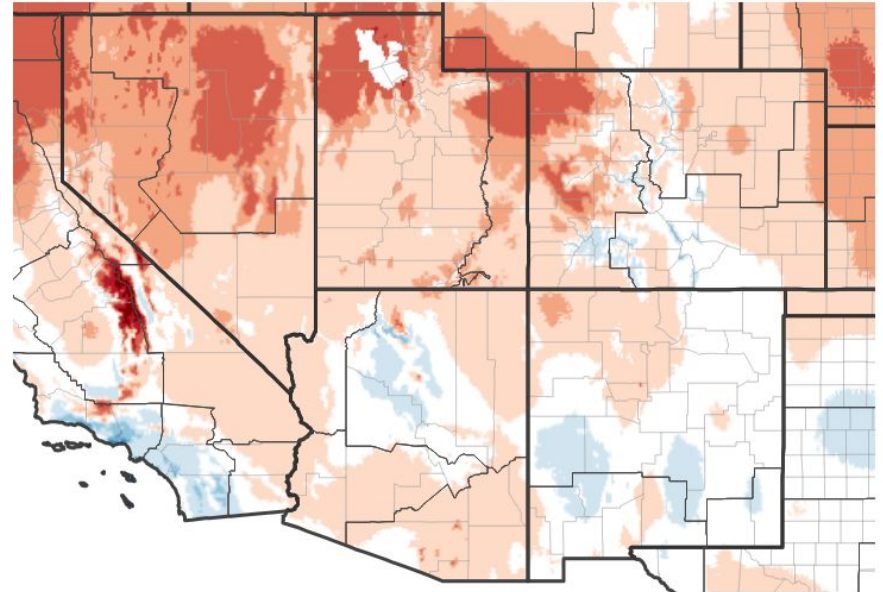
Temperature

- Overall, April was an **abnormally warm month** across eastern UT and western CO with the more notable anomalies across northeast UT and northwest CO

7-Day Temperature Anomaly

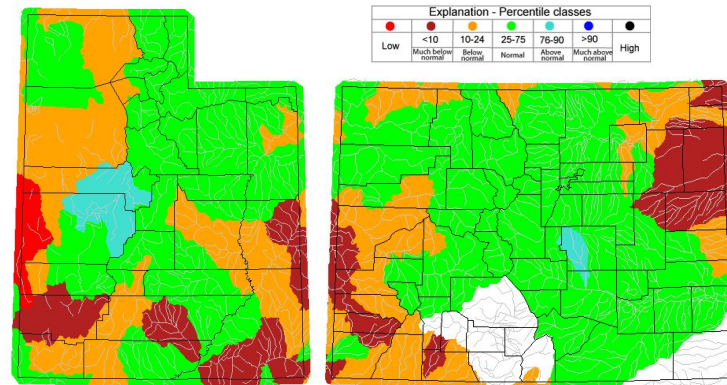
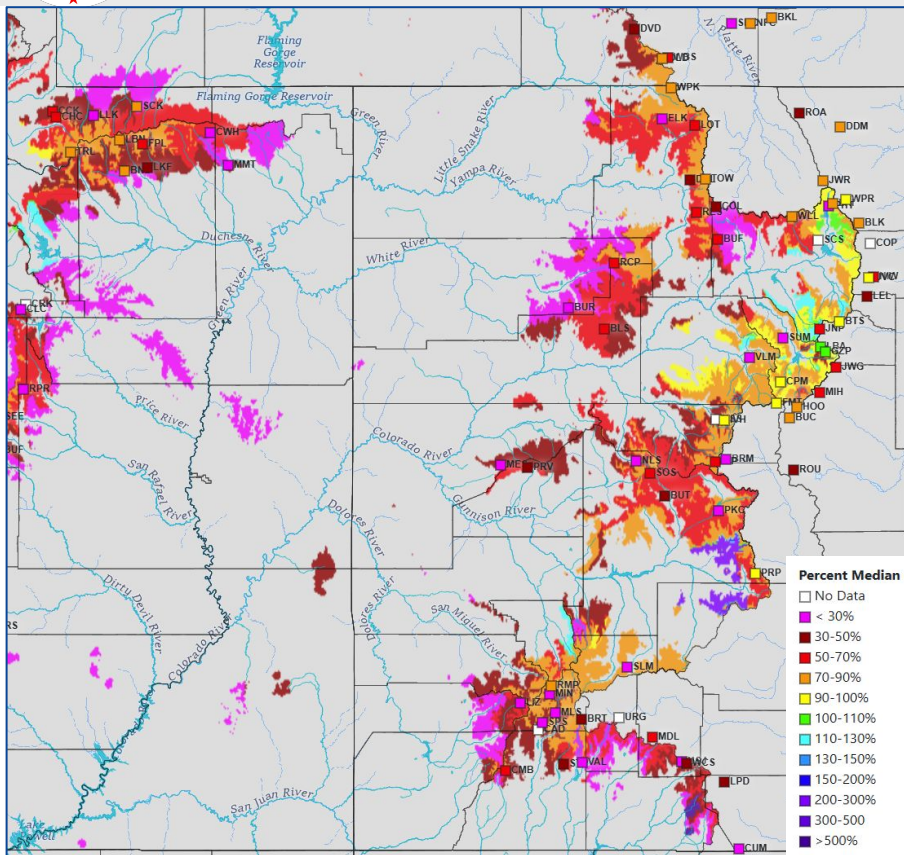


30-Day Temperature Anomaly





Hydrologic Conditions and Impacts



USGS 7 day average streamflow HUC map valid for the State of CO & UT
Data Valid: 05 07 2025

- Snow Water Equivalent - as percent of Median
 - Current **SWE** conditions are **below normal** across eastern UT and western CO river basins, despite 1 to 2 inches of SWE accumulated across southwest CO earlier this week
- Streamflow mirrors seasonal snowpack with southeast UT & southwest CO rivers running **below to well below normal**
 - However, warming trends this weekend will enhance snowmelt and lead to increasing stream and river flows over the next several days

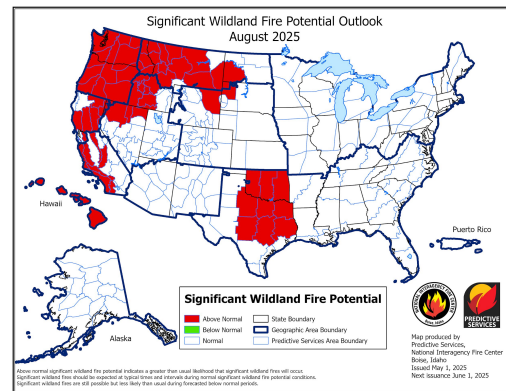
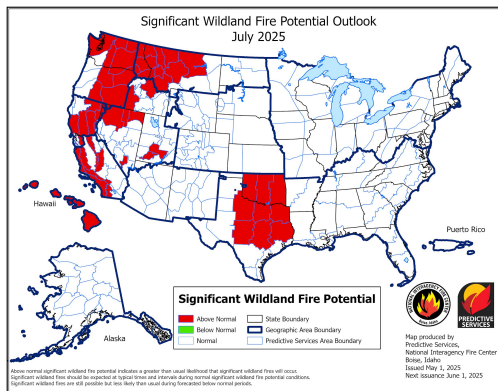
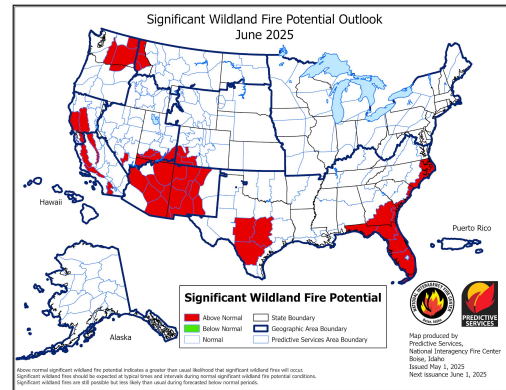
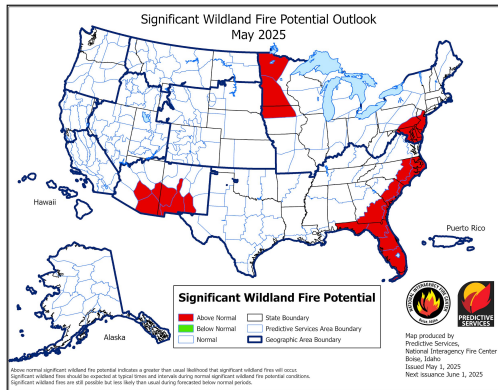




Fire Hazard Impacts

Link to [Wildfire Potential Outlooks from the National Interagency Coordination Center](#).

- Significant wildfire potential outlooks show **above normal fire potential** expanding into southwest Colorado and southeast Utah by **June 2025**
- However, **normal fire potential** returns across the Desert Southwest in **July-August 2025**



National Oceanic and
Atmospheric Administration

U.S. Department of Commerce



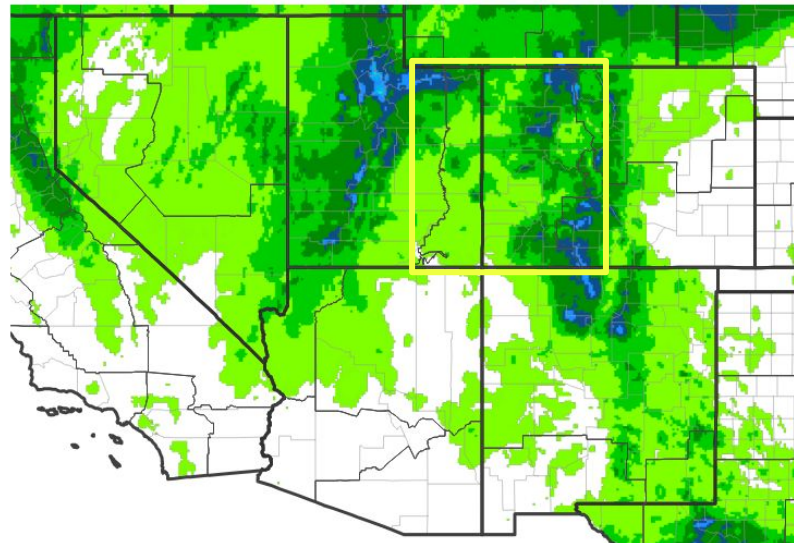
National Weather Service
Grand Junction, CO



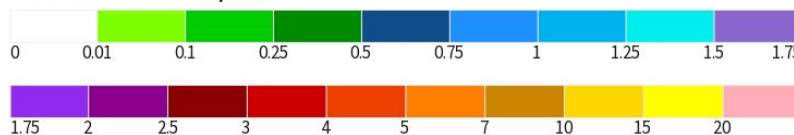
Seven Day Precipitation Forecast

- Scattered afternoon showers/thunderstorms are possible each day along the Divide through the weekend, although total QPF each evening is unlikely to exceed 0.1" to 0.2"
- A low, forecast to deepen across the Great Basin by Tuesday (May 13th), returns the next chance for widespread precipitation

7-Day Quantitative Precipitation Forecast for May 8, 2025–May 15, 2025



Predicted Inches of Precipitation

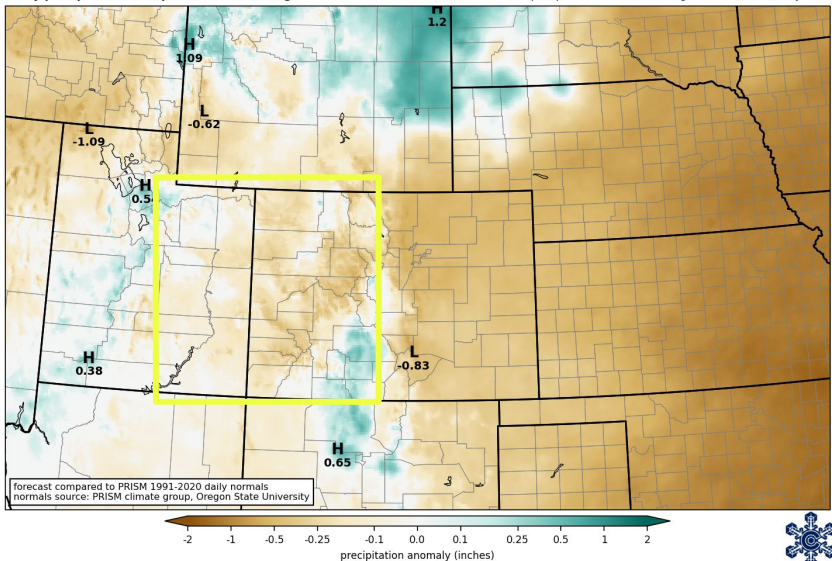


Source(s): National Weather Service Weather Prediction Center; image courtesy of Drought.gov

Last Updated: 05/08/25

NOAA Weather Prediction Center
7-day precip forecast departure from average

forecast issued 1200 UTC Thu 08 May 2025
precipitation in 168 hrs ending 1200 UTC Thu 15 May 2025



forecast compared to PRISM 1991-2020 daily normals
normals source: PRISM climate group, Oregon State University



National Oceanic and
Atmospheric Administration

U.S. Department of Commerce



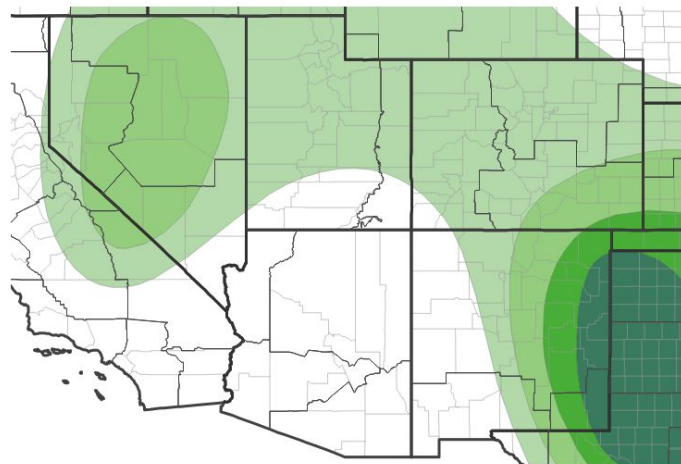
National Weather Service
Grand Junction, CO



Long-Range Outlooks

The latest monthly and seasonal outlooks can be found on the [CPC homepage](#)

Monthly Precipitation Outlook for May 1, 2025–May 31, 2025



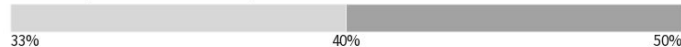
Probability of Below-Normal Precipitation



Probability of Above-Normal Precipitation



Probability of Near-Normal Precipitation

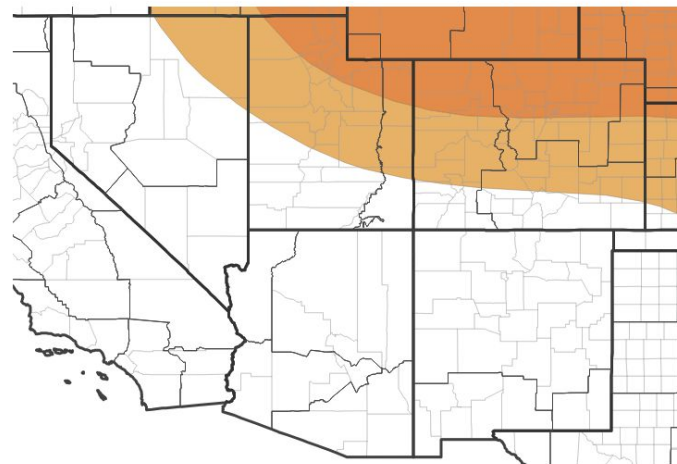


Source(s): Climate Prediction Center; image courtesy of Drought.gov

Last Updated: 04/30/25

- Up to **40%** probability of **above-normal precipitation** in May
- **Above normal temperatures** are probable across northern zones, with a decrease probability of above-normal temperatures moving south (over the Four Corners area)

Monthly Temperature Outlook for May 1, 2025–May 31, 2025



Probability of Below-Normal Temperatures



Probability of Above-Normal Temperatures



Probability of Near-Normal Temperatures



Source(s): Climate Prediction Center; image courtesy of Drought.gov

Last Updated: 04/30/25



National Oceanic and Atmospheric Administration
U.S. Department of Commerce



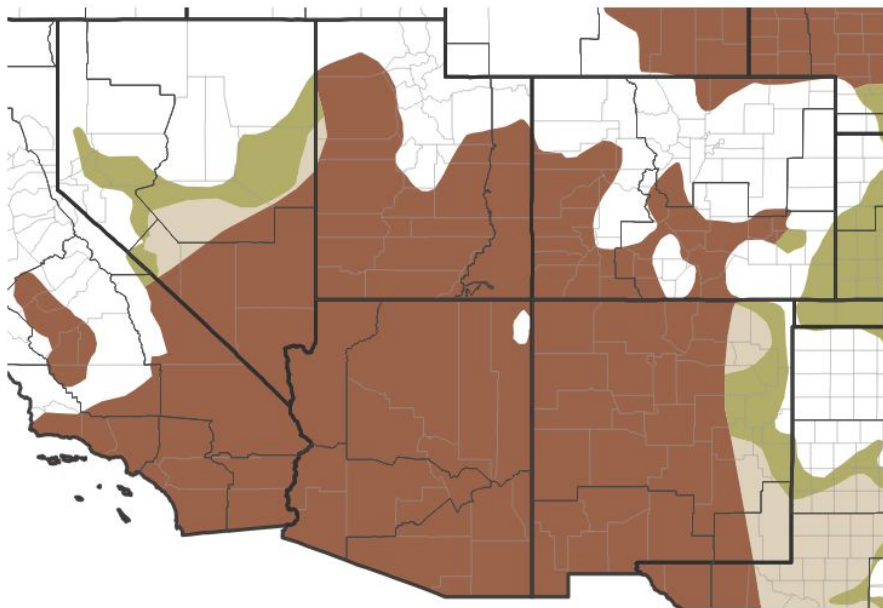
National Weather Service
Grand Junction, CO



Drought Outlook

The latest monthly and seasonal outlooks can be found on the [CPC homepage](#)

1-Month Drought Outlook for May 1, 2025–May 31, 2025



Drought Is Predicted To...

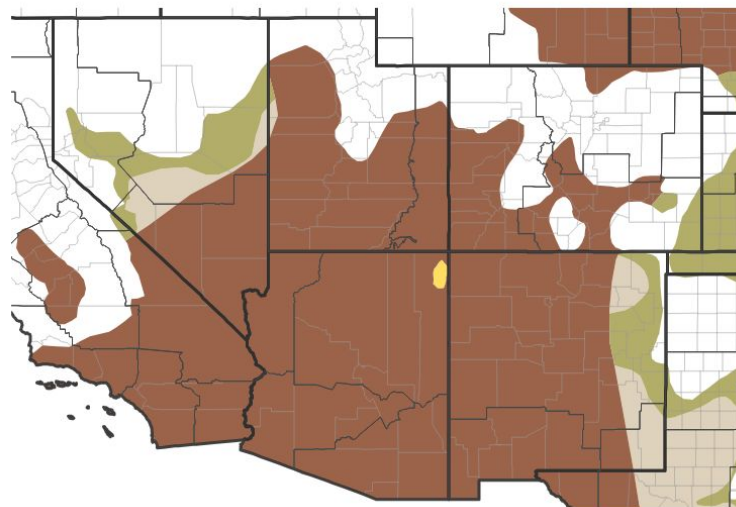


Source(s): Climate Prediction Center; image courtesy of Drought.gov

Last Updated: 04/30/25

- Anticipate **drought conditions to persist** through the month of **May** and into **summer**

Seasonal (3-Month) Drought Outlook for April 30, 2025–July 31, 2025



Drought Is Predicted To...



Source(s): Climate Prediction Center; image courtesy of Drought.gov

Last Updated: 04/30/25



National Oceanic and
Atmospheric Administration
U.S. Department of Commerce



National Weather Service
Grand Junction, CO



Summary of Impacts

Links: See/submit [Condition Monitoring Observer Reports \(CMOR\)](#) and view the [Drought Impacts Reporter](#)

Hydrologic Impacts

- Gov. Spencer Cox (Utah) issued an Executive Order declaring a state of emergency due to drought conditions combined with **low streamflow forecasts and increased water demands** with warmer temperatures for San Juan, Grand and Uintah counties

Agricultural Impacts

- There are no known impacts at this time

Fire Hazard Impacts

- There are no known impacts at this time

Other Impacts

- There are no known impacts at this time

Mitigation Actions

- Please refer to your municipality and/or water provider for mitigation information.

