



# Drought Information Statement for Western CO & Eastern UT

Valid July 10th, 2025

Issued By: WFO Grand Junction, CO

## Contact Information:

- This product will be updated if drought conditions change significantly.
- Please see all currently available products at <https://drought.gov/drought-information-statements>.
- Please visit <https://www.weather.gov/gjt/DroughtInformationStatement> for previous statements.
- Please visit <https://www.drought.gov/drought-status-updates/> for regional drought status updates.

- 1-Class Improvement across portions of west-central and southwest Colorado, which includes a reduction of D3 Extreme Drought
- Expansion of D2 across San Juan County in southeast Utah



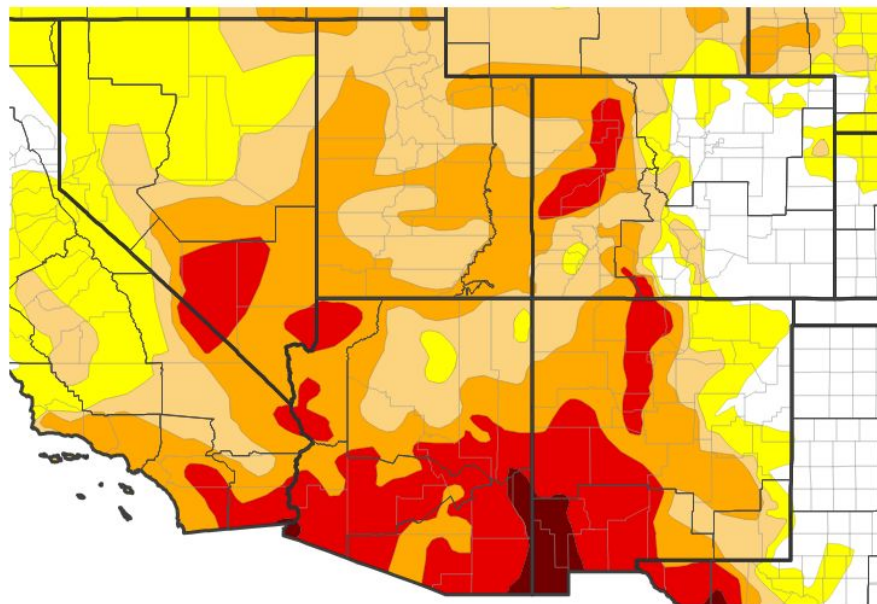
# U.S. Drought Monitor

Link to the [latest U.S. Drought Monitor](#) for the Intermountain West

## Drought intensity and Extent:

- **D3 (Extreme Drought)**: Reduction across western portions of Mesa, Montrose and San Miguel counties in western CO
- **D2 (Severe Drought)**: Expansion across southeast Utah, nearly covering all of San Juan county, UT
- **D1 (Moderate Drought)**: Persists across the west
- **D0: (Abnormally Dry)**: Reduction to D0 across portions of the San Juan Mountains in southwest CO and a sliver of terrain in east Eagle County

U.S. Drought Monitor



U.S. Drought Monitor



Source(s): NDMC, NOAA, USDA; image courtesy of Drought.gov

Data Valid: 07/08/25





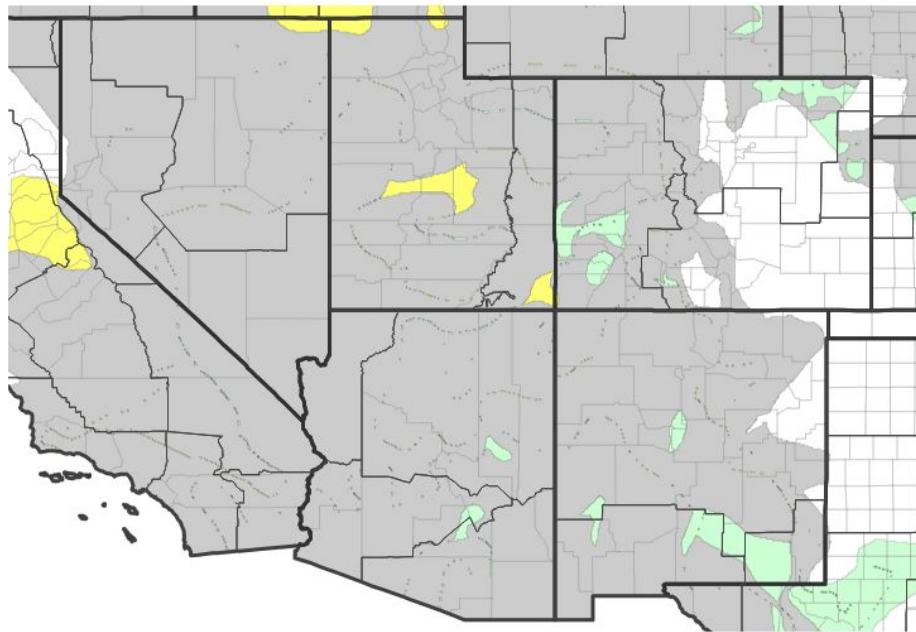
# Recent Change in Drought Intensity

Link to the latest [4-week change map](#) for WFO Grand Junction, CO

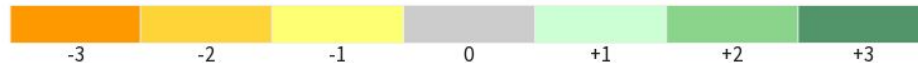
## One Week Drought Monitor Class Change:

- *Drought Worsened:* One class degradation in portions of southeast UT, San Juan county
- *Drought Improved:* One class improvement in west-central and southwest Colorado where areas have received one third to over half an inch of rainfall and soil moisture analyses show a moistening trend

U.S. Drought Monitor 1-Week Change Map



Drought Change Since Last Week



Source(s): NDMC, NOAA, USDA; image courtesy of Drought.gov

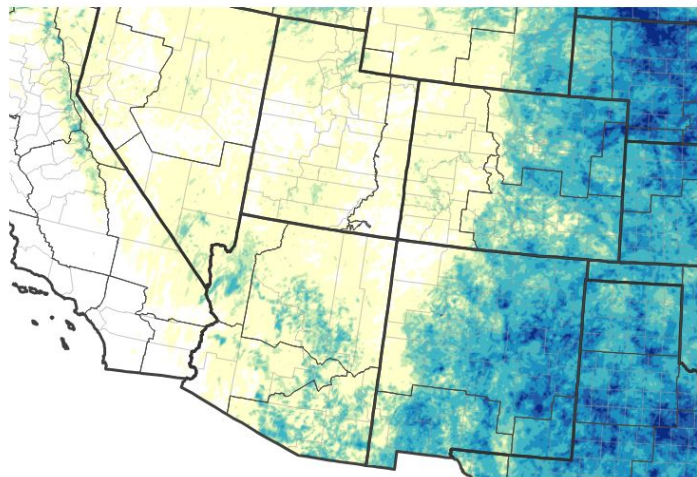
Data Valid: 07/08/25





# Precipitation

30-Day Precipitation Accumulations (Inches)



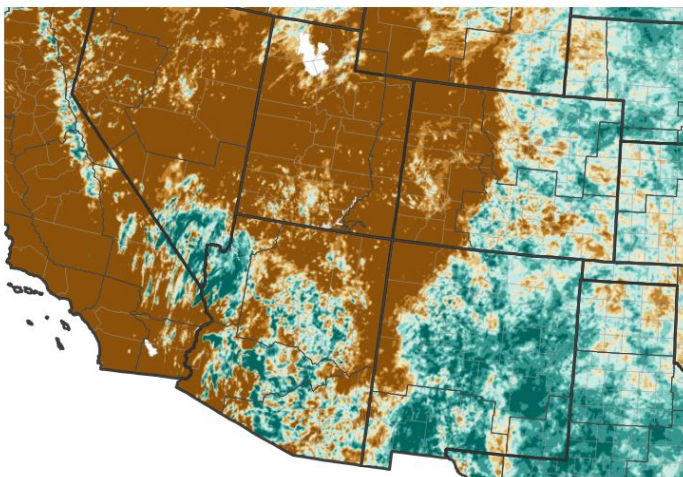
Inches of Precipitation



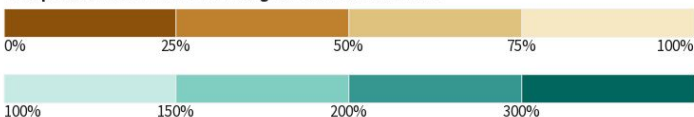
Source(s): National Weather Service Multi-Radar Multi-Sensor System;  
image courtesy of Drought.gov

Last Updated: 07/10/25

30-Day Percent of Normal Precipitation



Precipitation Shown as a Percentage of Normal Conditions



Source(s): National Weather Service Multi-Radar Multi-Sensor System;  
image courtesy of Drought.gov

Last Updated: 07/10/25

- In General, less than normal precipitation has fallen across the Western Slope in the previous 30 days.
- However, recent rainfall events have contributed to one-class improvements across the SW San Juans and west-central CO, where over half an inch of rainfall was received



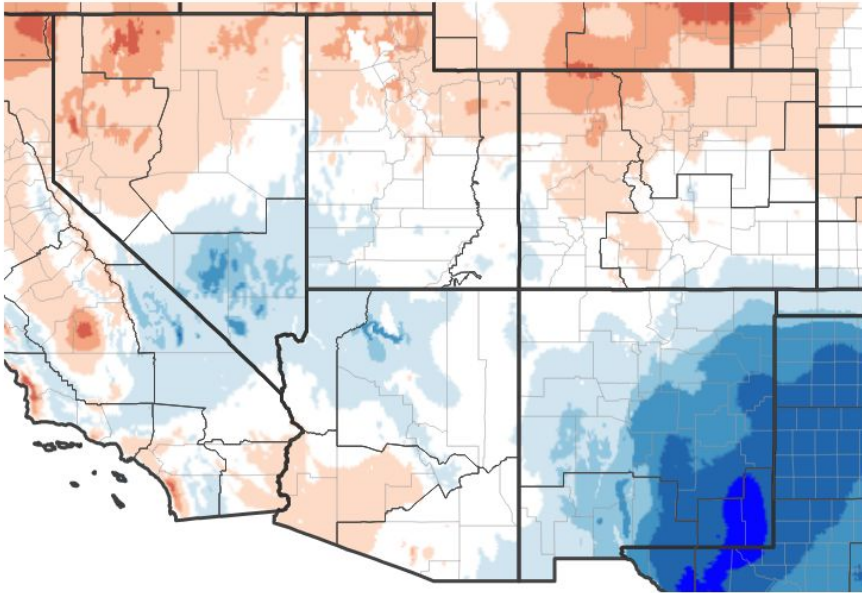




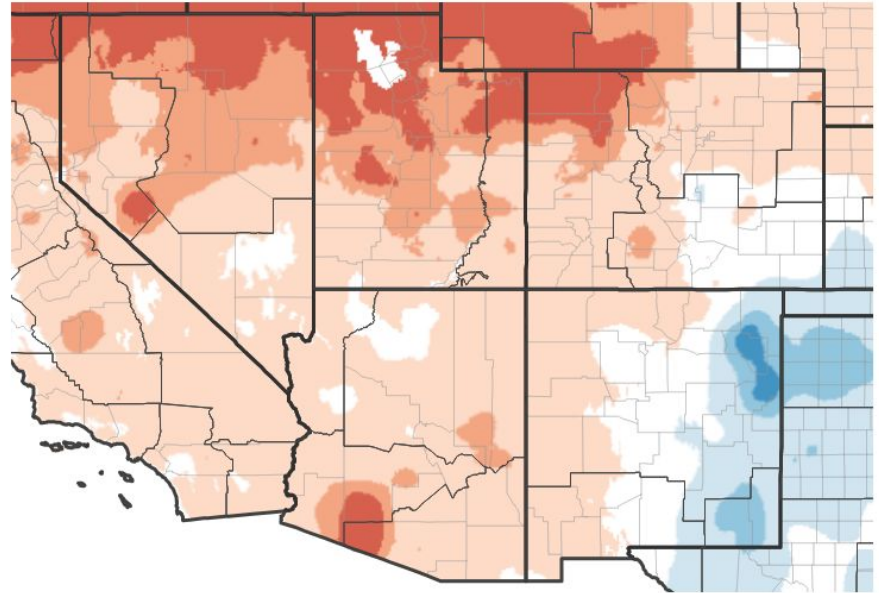
# Temperature

- Abnormally warm temperatures have continued to encompass the west, with the warmest swath focused over northeast UT and northwest CO.

7-Day Temperature Anomaly



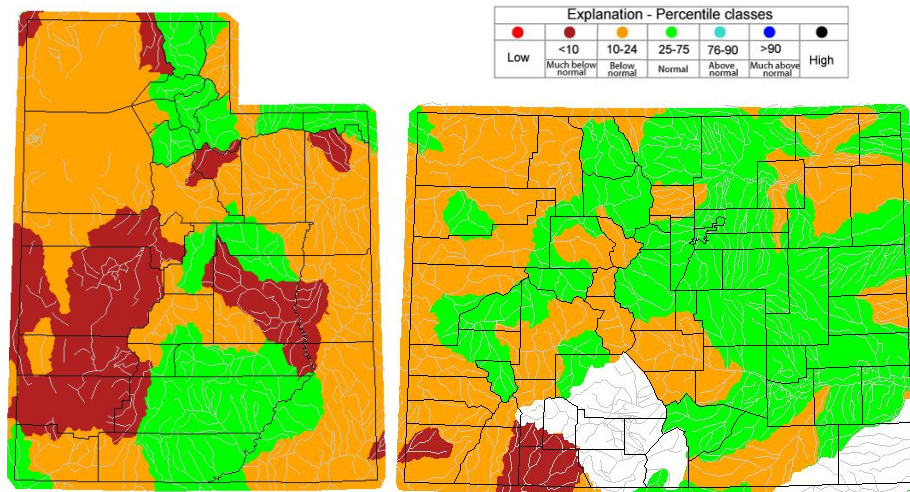
30-Day Temperature Anomaly





# Hydrologic Conditions and Impacts

CBRFC Peak Flow Forecast: Valid 07 02 2025



USGS 7 day average streamflow HUC map valid for the State of CO & UT

Data Valid: 07 09 2025

- Southwest oriented watersheds along the San Juans have struggled to improve from **much below normal** conditions
- Rainfall received last week did improve streamflow conditions for high elevation watersheds along the Uncompahgre and Colorado Mainstem
- Elsewhere, **below normal** streamflow persists



National Oceanic and  
Atmospheric Administration

U.S. Department of Commerce



National Weather Service  
Grand Junction, CO

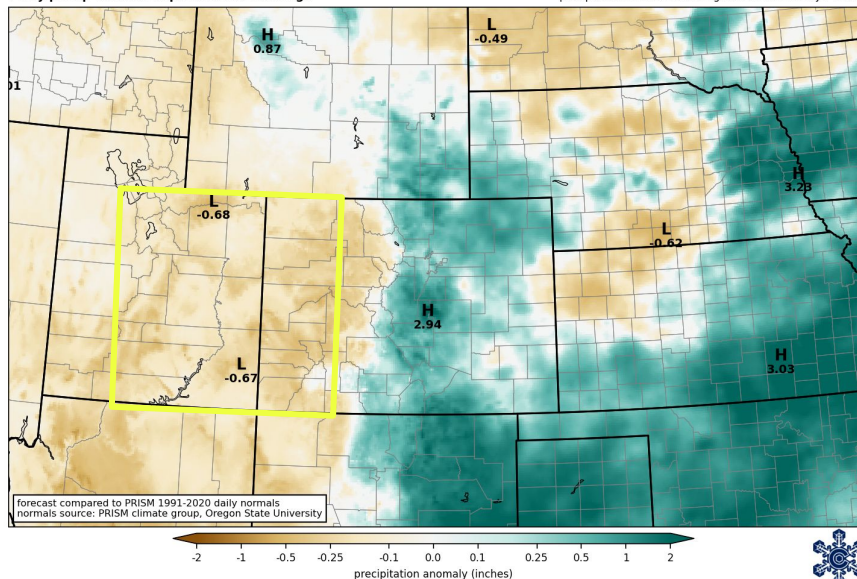


# Seven Day Precipitation Forecast

- The 7-Day precipitation forecast falls below normal across the Western Slope, with a small exception of normal totals *possible* across the SW San Juans
  - Warm and dry conditions dominate the forecast period.
- While isolated showers and storms are possible across mountain zones each afternoon, gusty outflow winds and lightning are the primary concerns rather than chance for heavy rain.

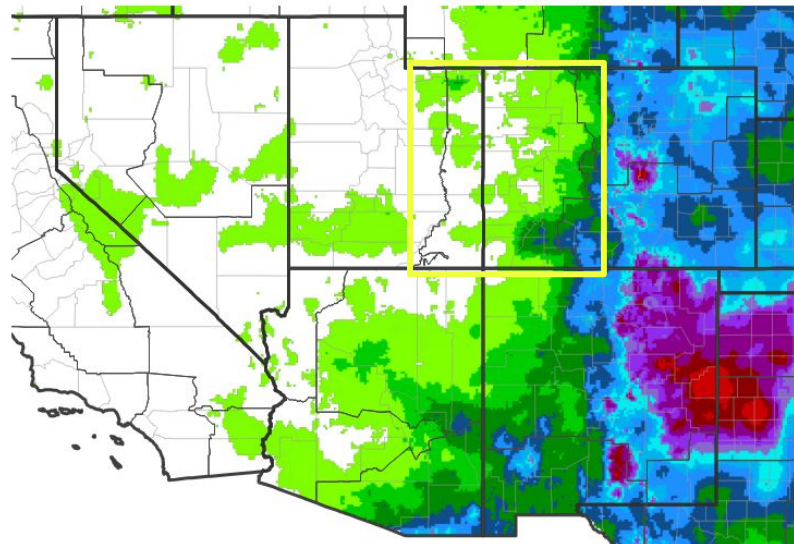
NOAA Weather Prediction Center  
7-day precip forecast departure from average

forecast issued 1200 UTC Thu 10 Jul 2025  
precipitation in 168 hrs ending 1200 UTC Thu 17 Jul 2025

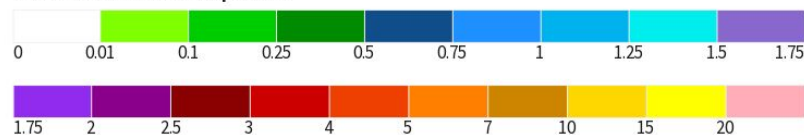


forecast compared to PRISM 1991-2020 daily normals  
normals source: PRISM climate group, Oregon State University

## 7-Day Quantitative Precipitation Forecast for July 10, 2025–July 17, 2025



Predicted Inches of Precipitation



Source(s): National Weather Service Weather Prediction Center; image courtesy of Drought.gov

Last Updated: 07/10/25



National Oceanic and  
Atmospheric Administration  
U.S. Department of Commerce

National Weather Service  
Grand Junction, CO



# Summary of Impacts

Links: See/submit [Condition Monitoring Observer Reports \(CMOR\)](#) and view the [Drought Impacts Reporter](#)

## Hydrologic Impacts

- Gov. Spencer Cox (Utah) issued an Executive Order declaring a state of emergency due to drought conditions combined with **low streamflow forecasts and increased water demands** with warmer temperatures for San Juan, Grand and Uintah counties

## Agricultural Impacts

- Reduced water supply in southwest Colorado (estimated users to expect to receive 30-35% of their full allotment due to low snowpack and warm/dry spring)

## Fire Hazard Impacts

- Stage 1 fire restrictions have been implemented for much of western Colorado and eastern Utah

## Other Impacts

- Colorado fisheries closed to fishing along the Yampa River below Stagecoach Dam due to low flow and prevent overfishing

## Mitigation Actions

- Pitkin County has declared a voluntary stage one water shortage in response to escalating drought conditions
- Please refer to your municipality and/or water provider for mitigation information.

