



# Drought Information Statement for Western CO & Eastern UT

Valid August 8th, 2025

Issued By: WFO Grand Junction, CO

## Contact Information:

- This product will be updated if drought conditions change significantly.
- Please see all currently available products at <https://drought.gov/drought-information-statements>.
- Please visit <https://www.weather.gov/gjt/DroughtInformationStatement> for previous statements.
- Please visit <https://www.drought.gov/drought-status-updates/> for regional drought status updates.

- D3 - Extreme Drought conditions have spread across much of west-northwest CO and east to northeast UT
- Elsewhere, D1 to D2 conditions exists



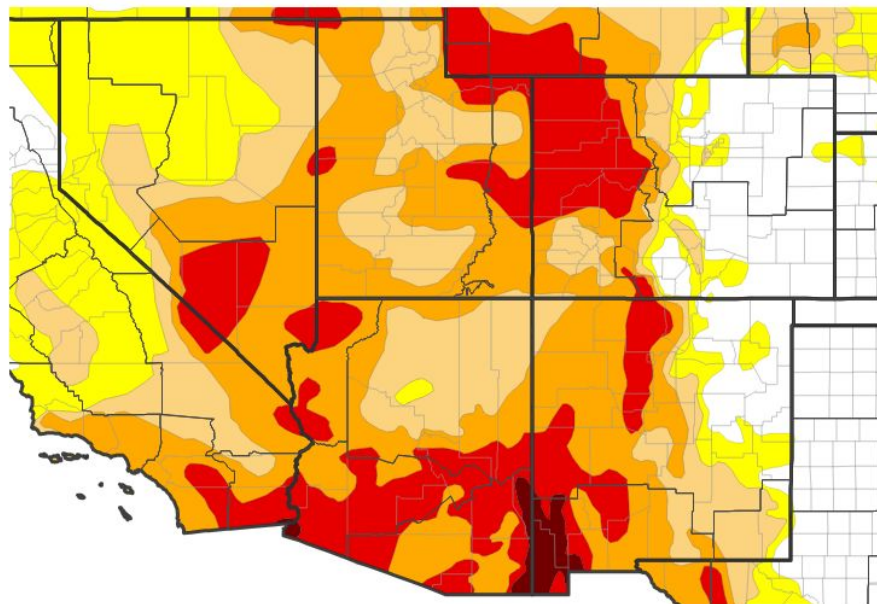
# U.S. Drought Monitor

Link to the [latest U.S. Drought Monitor](#) for the Intermountain West

## Drought intensity and Extent:

- **D3 (Extreme Drought)**: Expansion of extreme drought engulfs most of the Upper Colorado, Yampa, White, Green and the North Fork Gunnison River basins
- **D2 (Severe Drought)**: Expansion along the CO Divide and lower elevations across southwest CO and southeast UT
- **D1 (Moderate Drought)**: Now covers Uintah basin and the southwest San Juans
- **D0: (Abnormally Dry)**: Drought categories have worsened across the area and are now more severe than D0.

U.S. Drought Monitor



U.S. Drought Monitor



Source(s): NDMC, NOAA, USDA; image courtesy of Drought.gov

Data Valid: 08/05/25





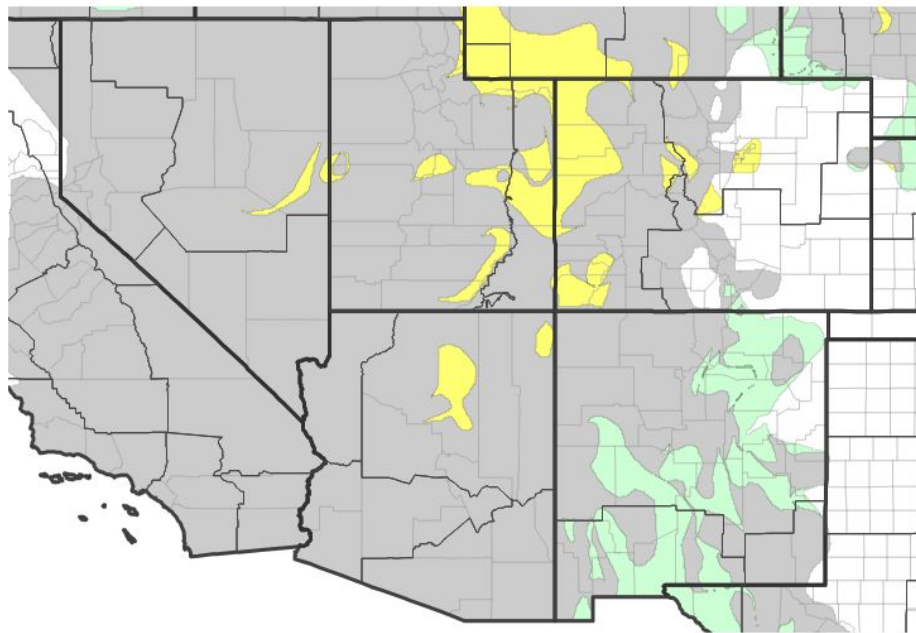
# Recent Change in Drought Intensity

Link to the latest [4-week change map](#) for WFO Grand Junction, CO

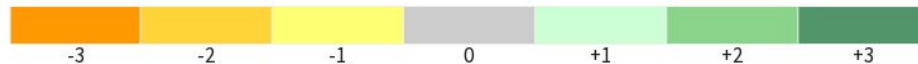
## One Week Drought Monitor Class Change:

- *Drought Worsened:* One class degradation over the lower Colorado River, from Utah's Grand Flats and into Mesa County in western CO. D3 conditions now expands to the CO/WY and UT/WY borders. Also, D0 conditions across the San Juans were removed and worsened to D1-Moderate Drought.
- *Drought Improved:* NA

U.S. Drought Monitor 1-Week Change Map



Drought Change Since Last Week



Source(s): NDMC, NOAA, USDA; image courtesy of Drought.gov

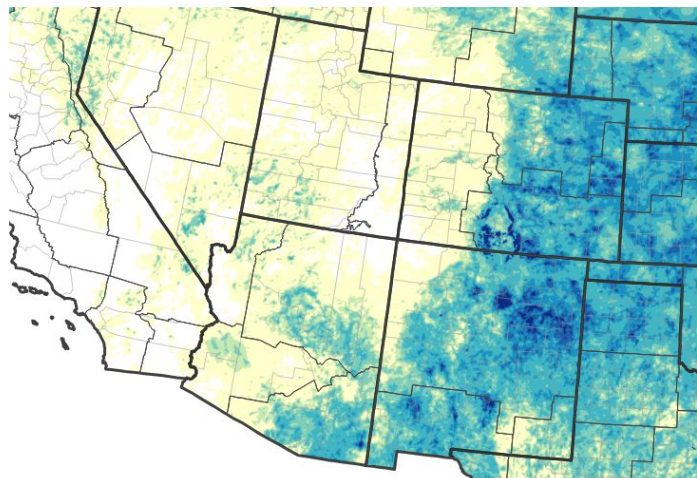
Data Valid: 08/05/25





# Precipitation

30-Day Precipitation Accumulations (Inches)



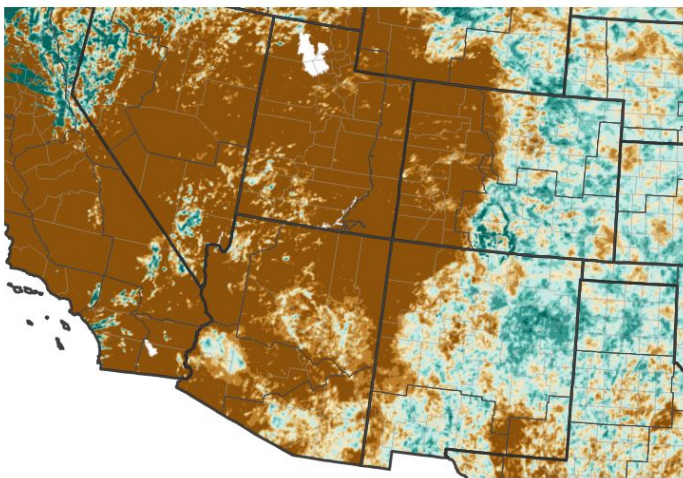
Inches of Precipitation



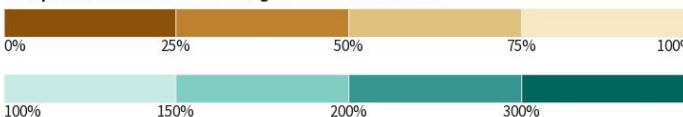
Source(s): National Weather Service Multi-Radar Multi-Sensor System;  
image courtesy of Drought.gov

Last Updated: 08/08/25

30-Day Percent of Normal Precipitation



Precipitation Shown as a Percentage of Normal Conditions



Source(s): National Weather Service Multi-Radar Multi-Sensor System;  
image courtesy of Drought.gov

Last Updated: 08/08/25

- Monsoon activity continues to run well below normal for western CO and eastern UT
  - 30-day precipitation estimates are well below normal
- Isolated storms produced 0.5 to 1.00 inches of precipitation in early August. Although, majority of the region received less than 0.5 inch over the last 30 days



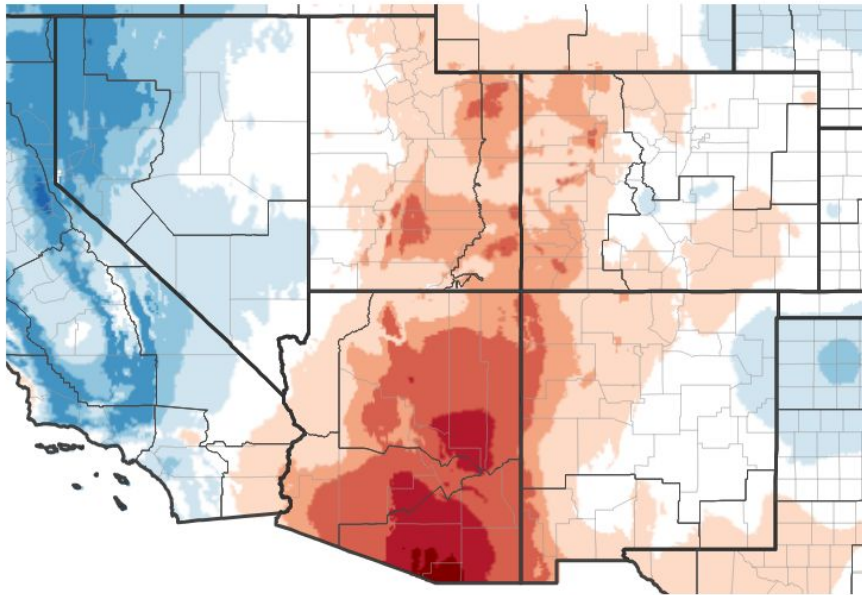




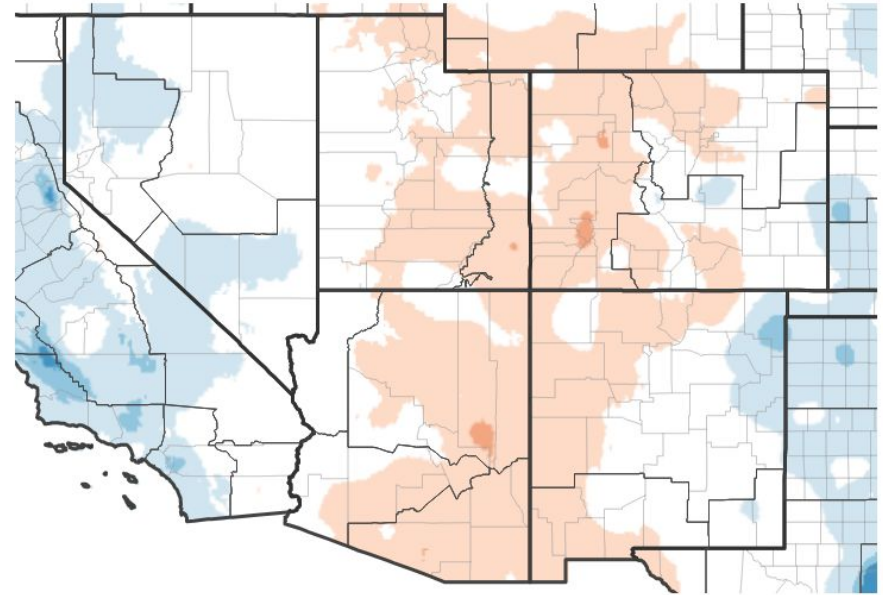
# Temperature

- Abnormally warm temperatures have continued to encompass the west through the month of July. Temperatures show a greater departure from normal since the beginning of August.

7-Day Temperature Anomaly



30-Day Temperature Anomaly

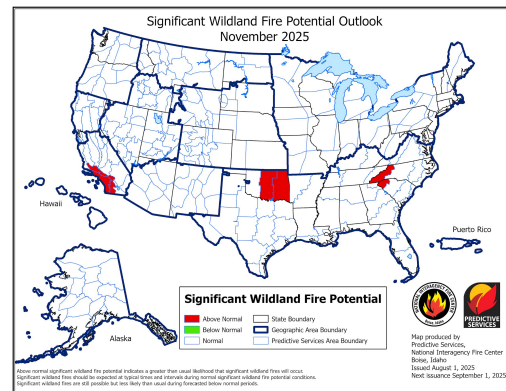
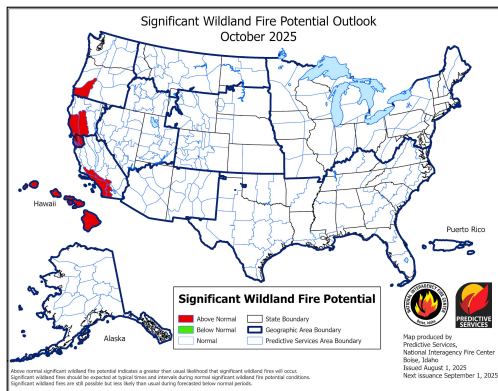
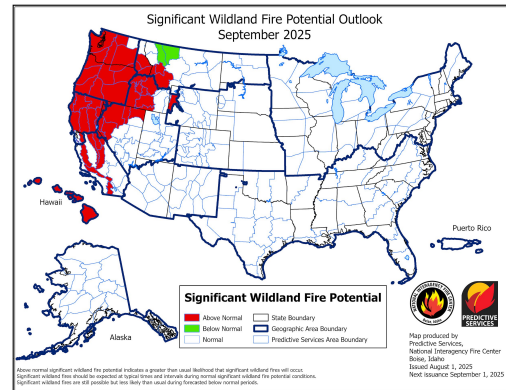
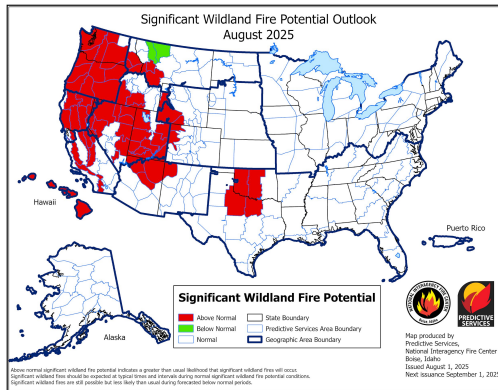




# Fire Hazard Impacts

Link to [Wildfire Potential Outlooks from the National Interagency Coordination Center](#).

- Significant wildfire potential outlooks show **above normal fire potential** persists across eastern Utah and west to northwest Colorado through the month of August.
- Regions with the potential for above normal fire activity in succeeding months shifts to the northwest, with normal conditions expected over Utah and Colorado by September.



National Oceanic and  
Atmospheric Administration  
U.S. Department of Commerce

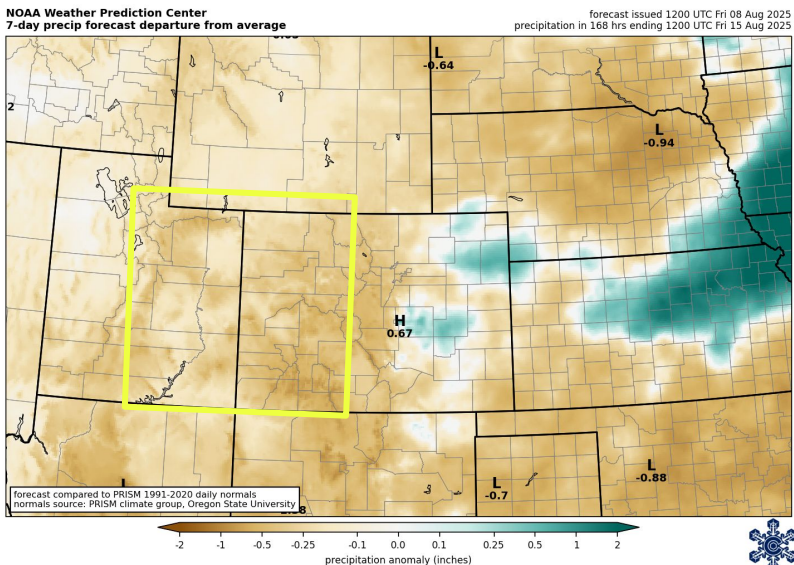


National Weather Service  
Grand Junction, CO

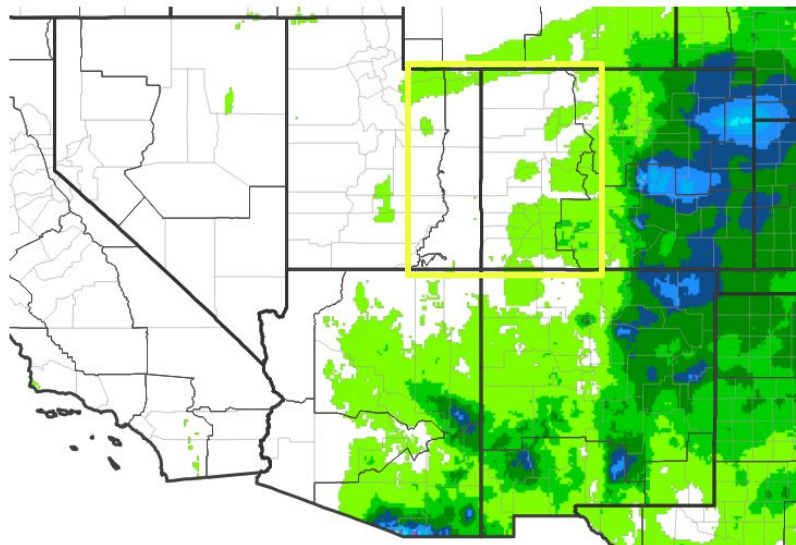


# Seven Day Precipitation Forecast

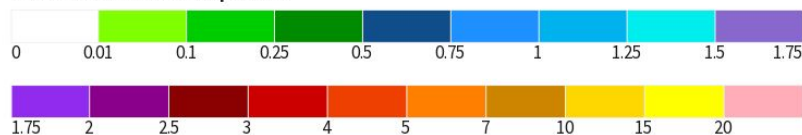
- The 7-Day precipitation forecast falls below normal across the Western Slope
- Weak monsoon moisture will not support widespread precipitation west of the Divide.
- The next best chance for measurable precipitation arrives late next week/weekend



## 7-Day Quantitative Precipitation Forecast for August 8, 2025–August 15, 2025



### Predicted Inches of Precipitation



Source(s): National Weather Service Weather Prediction Center; image courtesy of Drought.gov

Last Updated: 08/08/25



National Oceanic and  
Atmospheric Administration

U.S. Department of Commerce



National Weather Service  
Grand Junction, CO

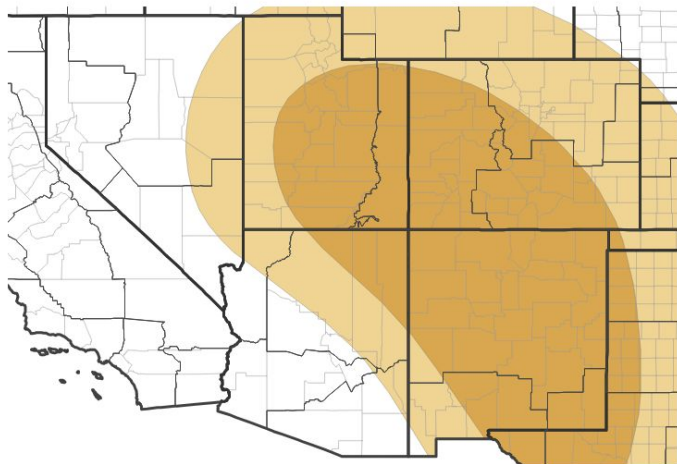




# Long-Range Outlooks

The latest monthly and seasonal outlooks can be found on the [CPC homepage](#)

**Monthly Precipitation Outlook for August 1, 2025–August 31, 2025**



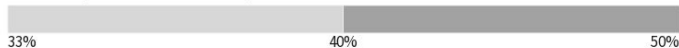
**Probability of Below-Normal Precipitation**



**Probability of Above-Normal Precipitation**



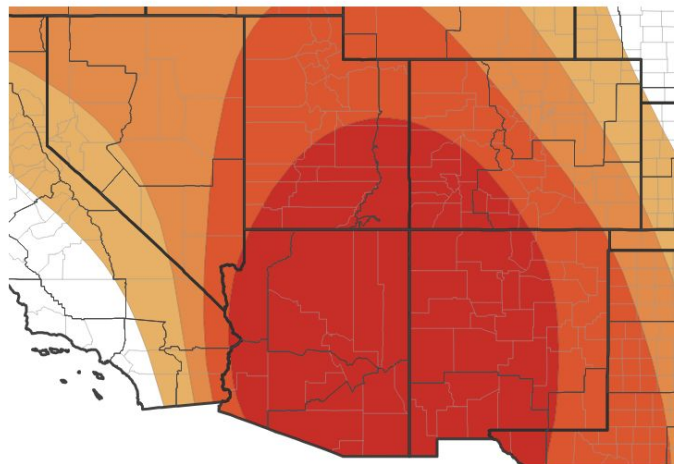
**Probability of Near-Normal Precipitation**



Source(s): Climate Prediction Center; image courtesy of Drought.gov

Last Updated: 07/31/25

**Monthly Temperature Outlook for August 1, 2025–August 31, 2025**



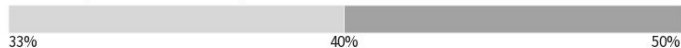
**Probability of Below-Normal Temperatures**



**Probability of Above-Normal Temperatures**



**Probability of Near-Normal Temperatures**



Source(s): Climate Prediction Center; image courtesy of Drought.gov

Last Updated: 07/31/25

- 50 to 70% chance of warmer than normal temperatures across western CO and eastern UT through the month of August
- 40 to 50% chance of precipitation running below normal, too. The signature of the precipitation outlook would indicate a less active and/or weaker monsoon through the end of summer



**National Oceanic and  
Atmospheric Administration**

U.S. Department of Commerce



**National Weather Service  
Grand Junction, CO**





# Summary of Impacts

Links: See/submit [Condition Monitoring Observer Reports \(CMOR\)](#) and view the [Drought Impacts Reporter](#)

## Hydrologic Impacts

- Water conservation is still encouraged
- Increased algae blooms with reduced flow in creeks, streams and rivers and warmer water temperatures

## Agricultural Impacts

- Pastures provide marginal feeding for livestock, resulting in supplemental feeding and hauling water for livestock is required
- Hay production has been about 33% of normal
- Crop conditions are very poor - extreme degree of loss to yield potential, complete or near crop failure due to less water for irrigation, reduced yield, insect infestation, and plant stress

## Fire Hazard Impacts

- Extreme fire behavior in Mesa, Garfield and Rio Blanco counties in western CO
- Drought and high winds have resulted in rapid fire growth for several fires across western CO over the last 7 days

## Other Impacts

- Colorado fisheries closed to fishing along the Yampa River below Stagecoach Dam due to low flow and prevent overfishing
- Several wildfires have diminished air quality and affected CO's outdoor recreation economy. The BLM closed public lands access in Mesa, Delta, and Montrose counties, and the South Rim Fire has closed the Black Canyon of the Gunnison NP

## Mitigation Actions

- Please refer to your municipality and/or water provider for mitigation information.

