



Drought Information Statement for Western CO & Eastern UT

Valid August 14th, 2025

Issued By: WFO Grand Junction, CO

Contact Information:

- This product will be updated if drought conditions change significantly.
 - Please see all currently available products at <https://drought.gov/drought-information-statements>.
 - Please visit <https://www.weather.gov/gjt/DroughtInformationStatement> for previous statements.
 - Please visit <https://www.drought.gov/drought-status-updates/> for regional drought status updates.
-
- Persistent heat and drought conditions through the summer months have lead to dangerous fire weather conditions, with multiple active wildfires across western Colorado
 - In response, D4-Exceptional Drought has been introduced over several western Colorado counties





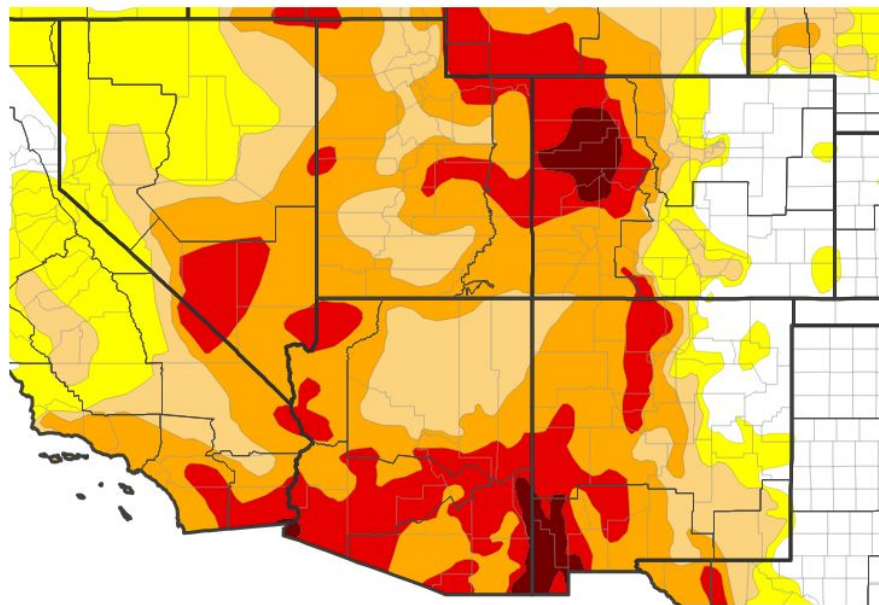
U.S. Drought Monitor

Link to the [latest U.S. Drought Monitor](#) for the Intermountain West

Drought intensity and Extent:

- **D4 (Exceptional Drought):** Exceptional drought conditions have spread into 8 counties in western CO; including portions of Moffat, Routt, Rio Blanco, Garfield, Eagle, Pitkin, Mesa, Delta and Gunnison counties
- **D3 (Extreme Drought):** No expansion of D3 over the last week
- **D2 (Severe Drought):** Expansion across the southwest San Juans and Uinta basins
- **D1 (Moderate Drought):** Majority of the regions that were previously in D1 have shown degrading conditions and are now classified as D2, Severe Drought

U.S. Drought Monitor



U.S. Drought Monitor



Source(s): NDMC, NOAA, USDA; image courtesy of Drought.gov

Data Valid: 08/12/25





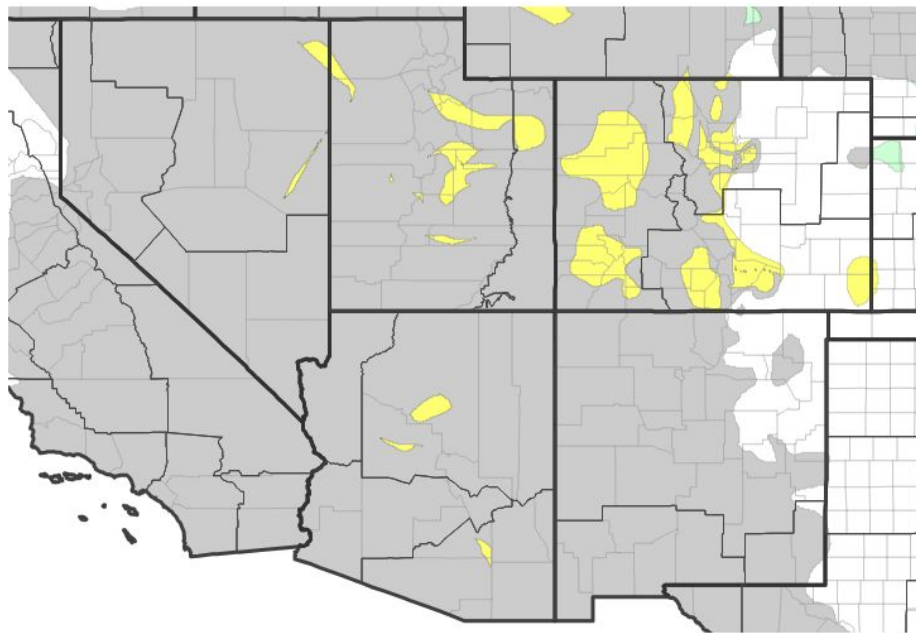
Recent Change in Drought Intensity

Link to the latest [4-week change map](#) for WFO Grand Junction, CO

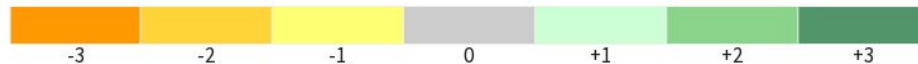
One Week Drought Monitor Class Change:

- *Drought Worsened:* One class degradation over northwest Colorado - dropping to D4, southwest Colorado - dropping to D2, and northeast Utah - dropping to D2
- *Drought Improved:* NA

U.S. Drought Monitor 1-Week Change Map



Drought Change Since Last Week



Source(s): NDMC, NOAA, USDA; image courtesy of Drought.gov

Data Valid: 08/12/25



National Oceanic and
Atmospheric Administration
U.S. Department of Commerce

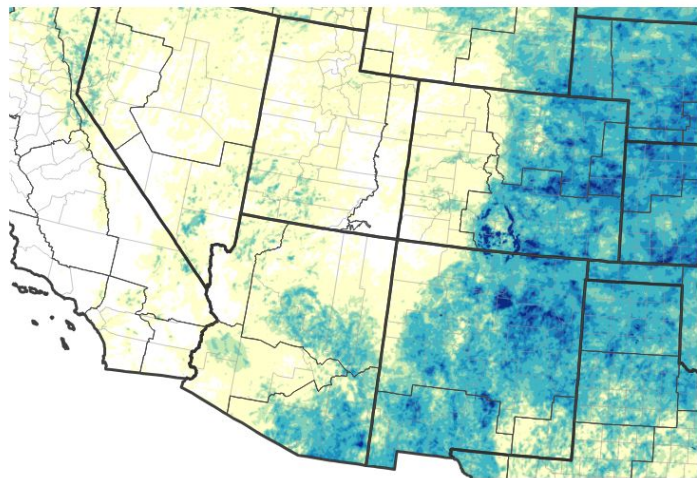


National Weather Service
Grand Junction, CO



Precipitation

30-Day Precipitation Accumulations (Inches)



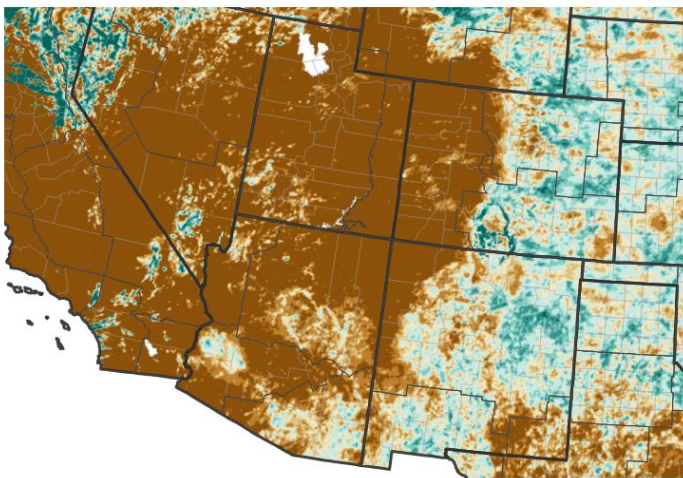
Inches of Precipitation



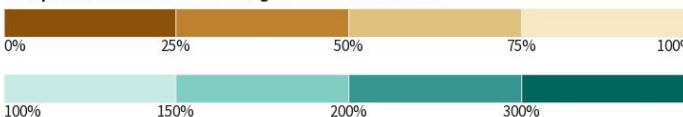
Source(s): National Weather Service Multi-Radar Multi-Sensor System;
image courtesy of Drought.gov

Last Updated: 08/14/25

30-Day Percent of Normal Precipitation



Precipitation Shown as a Percentage of Normal Conditions



Source(s): National Weather Service Multi-Radar Multi-Sensor System;
image courtesy of Drought.gov

Last Updated: 08/14/25

- Monsoon activity continues to run well below normal for western CO and eastern UT
 - 30-day precipitation estimates are well below normal
- Isolated storms produced 0.5 to 1.00 inches of precipitation in early August with minimal accumulation since. Majority of the region has received less than 0.5 inch over the last 30 days

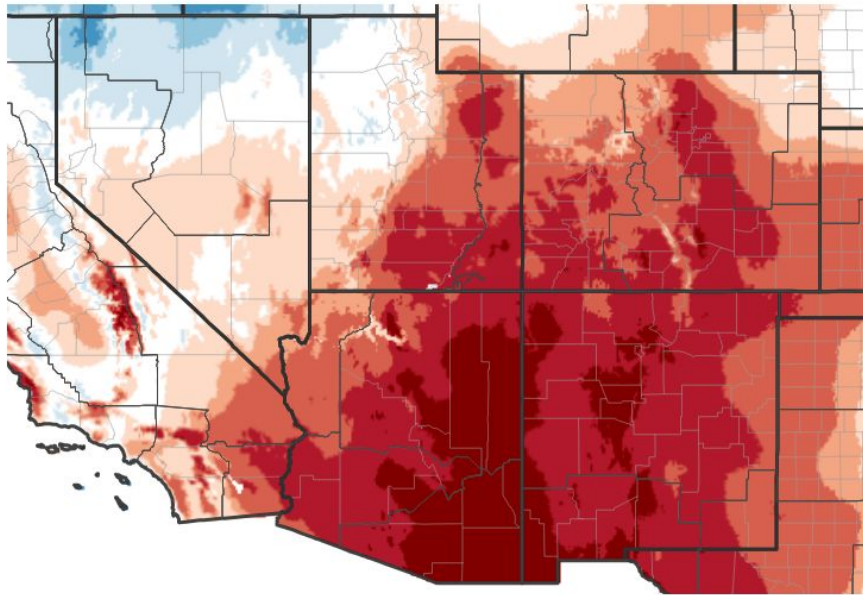




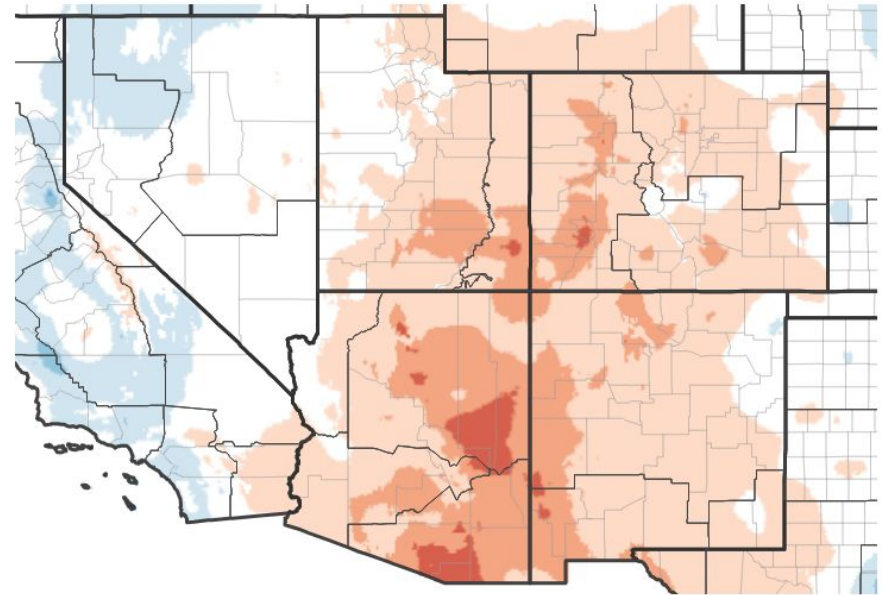
Temperature

- Abnormally warm temperatures have continued to encompass the west over the last 30 days, with a larger departure from normal over the Four Corners region. Temperatures show a greater departure from normal since the beginning of August.

7-Day Temperature Anomaly



30-Day Temperature Anomaly



Departure from Normal Max Temperature (°F)

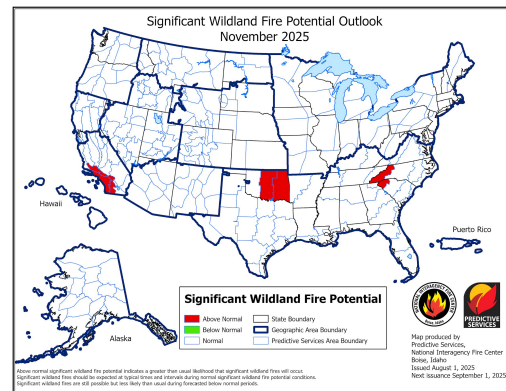
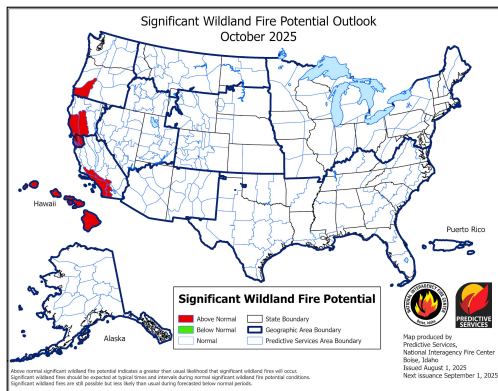
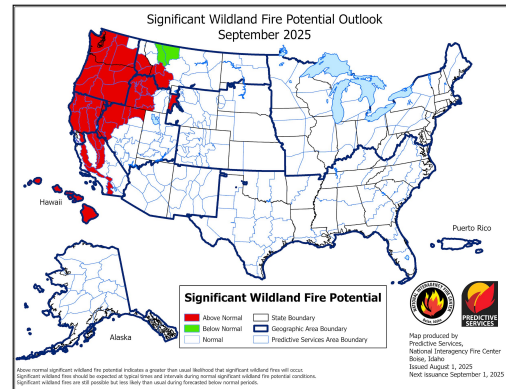
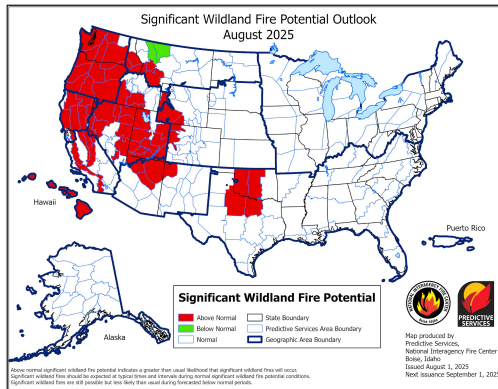




Fire Hazard Impacts

Link to [Wildfire Potential Outlooks from the National Interagency Coordination Center](#).

- Significant wildfire potential outlooks show **above normal fire potential** persists across eastern Utah and west to northwest Colorado through the month of August.
- Regions with the potential for above normal fire activity in succeeding months shifts to the northwest, with normal conditions expected over Utah and Colorado by September.



National Oceanic and
Atmospheric Administration

U.S. Department of Commerce

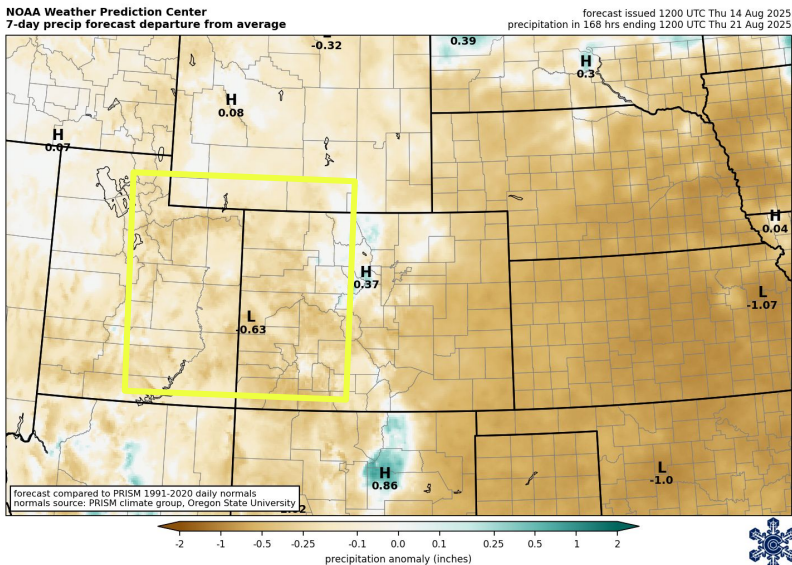


National Weather Service
Grand Junction, CO

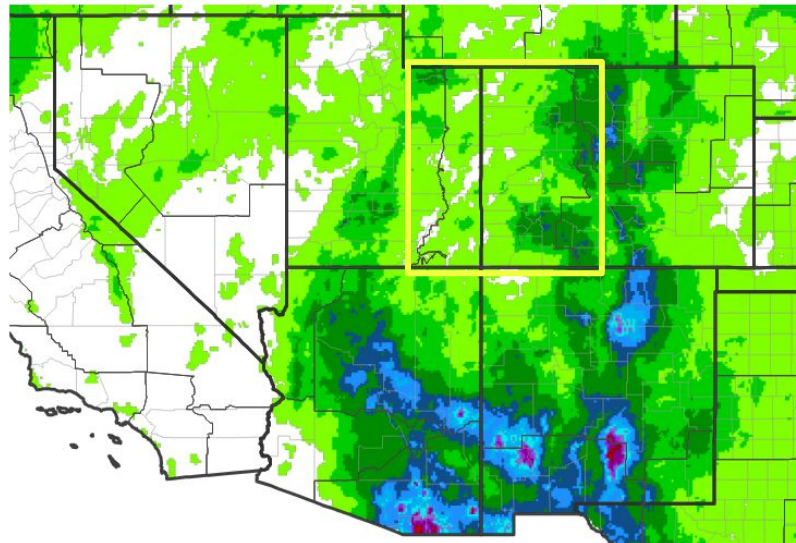


Seven Day Precipitation Forecast

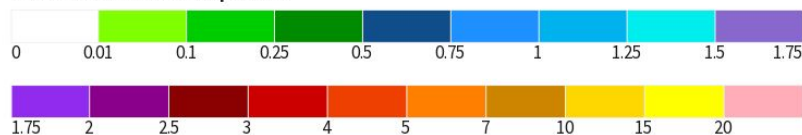
- The 7-Day precipitation forecast falls below normal across the Western Slope
- Weak monsoon moisture will not support widespread precipitation, though isolated to scattered storms are possible over the next 3 days and will favor high terrain.
- The next best chance for measurable precipitation arrives late next week/weekend



7-Day Quantitative Precipitation Forecast for August 14, 2025–August 21, 2025



Predicted Inches of Precipitation



Source(s): National Weather Service Weather Prediction Center; image courtesy of Drought.gov

Last Updated: 08/14/25



National Oceanic and
Atmospheric Administration

U.S. Department of Commerce



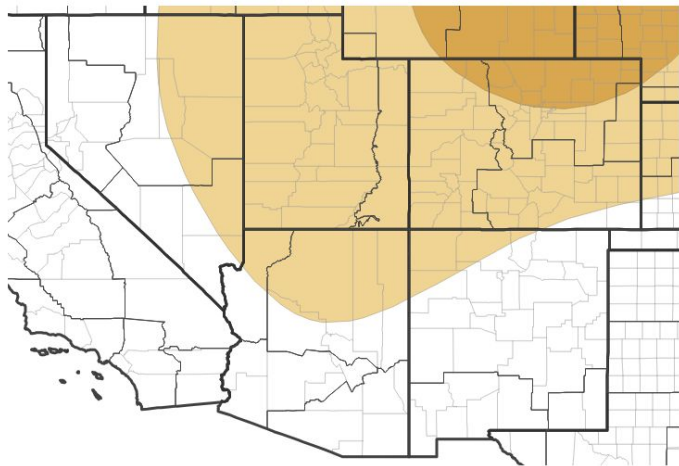
National Weather Service
Grand Junction, CO



Long-Range Outlooks

The latest monthly and seasonal outlooks can be found on the [CPC homepage](#)

Seasonal (3-Month) Precipitation Outlook for August 1, 2025–October 31, 2025



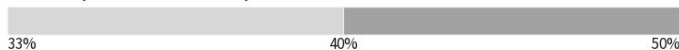
Probability of Below-Normal Precipitation



Probability of Above-Normal Precipitation



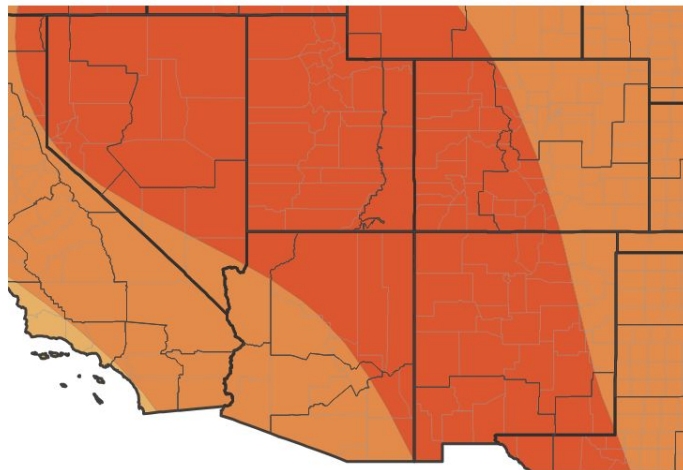
Probability of Near-Normal Precipitation



Source(s): Climate Prediction Center; image courtesy of Drought.gov

Last Updated: 07/17/25

Seasonal (3-Month) Temperature Outlook for August 1, 2025–October 31, 2025



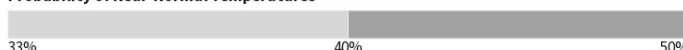
Probability of Below-Normal Temperatures



Probability of Above-Normal Temperatures



Probability of Near-Normal Temperatures



Source(s): Climate Prediction Center; image courtesy of Drought.gov

Last Updated: 07/17/25

- There is a 33 to 50% chance of precipitation running below normal for the seasonal outlook (Aug - Oct).
- There is a greater probability for warmer than normal temperatures over the next three months, 50 to 60%, across the Western Slope.



National Oceanic and Atmospheric Administration
U.S. Department of Commerce



National Weather Service
Grand Junction, CO



Summary of Impacts

Links: See/submit [Condition Monitoring Observer Reports \(CMOR\)](#) and view the [Drought Impacts Reporter](#)

Hydrologic Impacts

- Water conservation is still encouraged
- Increased algae blooms with reduced flow in creeks, streams and rivers and warmer water temperatures

Agricultural Impacts

- Pastures provide marginal feeding for livestock, resulting in supplemental feeding and hauling water for livestock is required
- Hay production has been about 33% of normal
- Crop conditions are very poor - extreme degree of loss to yield potential, complete or near crop failure due to less water for irrigation, reduced yield, insect infestation, and plant stress

Fire Hazard Impacts

- Extreme fire behavior in Mesa, Garfield and Rio Blanco counties in western CO
- Drought and high winds have resulted in rapid fire growth for several fires across western CO over the last 7 days

Other Impacts

- Colorado fisheries closed to fishing along the Yampa River below Stagecoach Dam due to low flow and prevent overfishing
- Several wildfires have diminished air quality and affected CO's outdoor recreation economy. The BLM closed public lands access in Mesa, Delta, and Montrose counties, and the South Rim Fire has closed the Black Canyon of the Gunnison NP

Mitigation Actions

- Please refer to your municipality and/or water provider for mitigation information.

