



Drought Information Statement for Western CO & Eastern UT

Valid September 18th, 2025

Issued By: WFO Grand Junction, CO

Contact Information:

- This product will be updated if drought conditions change significantly.
 - Please see all currently available products at <https://drought.gov/drought-information-statements>.
 - Please visit <https://www.weather.gov/gjt/DroughtInformationStatement> for previous statements.
 - Please visit <https://www.drought.gov/drought-status-updates/> for regional drought status updates.
-
- Several rounds of monsoon moisture have improved drought conditions across the Western Slope
 - Extreme drought still persists, despite recent rainfall





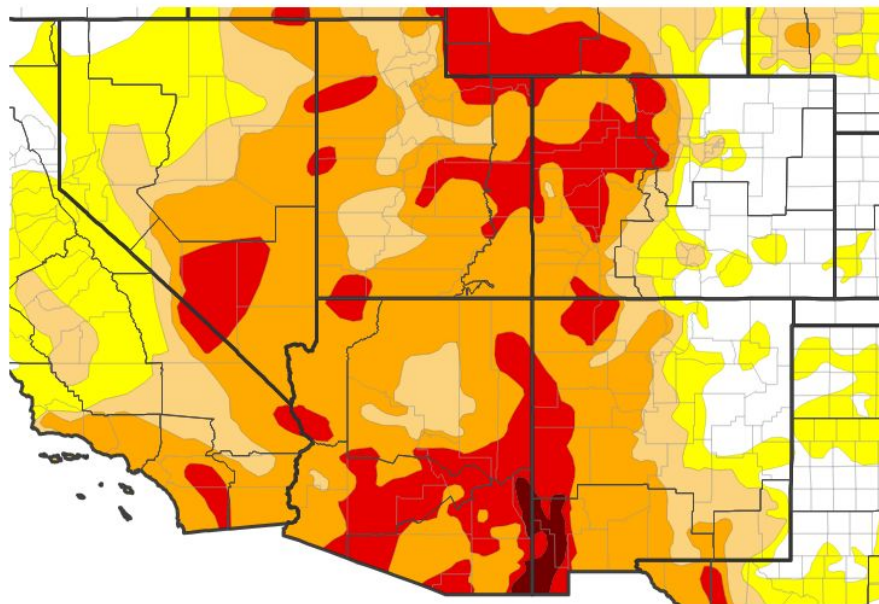
U.S. Drought Monitor

Link to the [latest U.S. Drought Monitor](#) for the Intermountain West

Drought intensity and Extent:

- **D4 (Exceptional Drought):** Removed!
- **D3 (Extreme Drought):** D3 persists across majority of the Upper Colorado mainstem across east-central Utah through west-central and northwest Colorado, as well as the Green River basin in northeast Utah and northwest Colorado
- **D2 (Severe Drought):** Encompasses over 95% of the Grand Junction CWA
- **D1 (Moderate Drought):** Sliver over central Mesa County and along the spine of the Divide across southern Colorado Rockies

U.S. Drought Monitor



U.S. Drought Monitor



Source(s): NDMC, NOAA, USDA; image courtesy of Drought.gov

Data Valid: 09/16/25





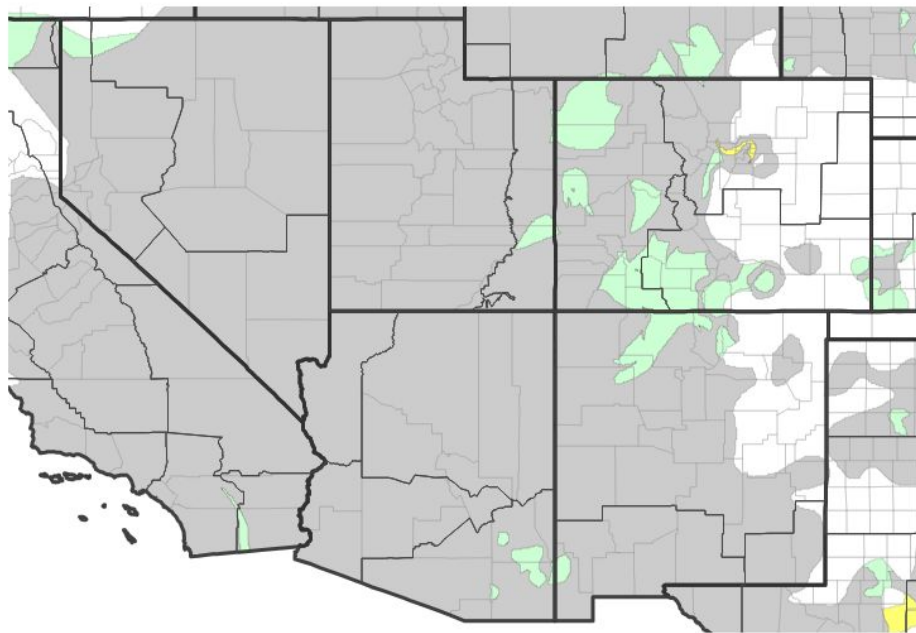
Recent Change in Drought Intensity

Link to the latest [4-week change map](#) for WFO Grand Junction, CO

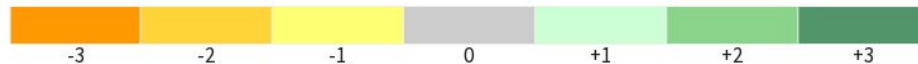
One Week Drought Monitor Class Change:

- *Drought Worsened:* NA
- *Drought Improved:* Several improvements noted across northwest Colorado, east-central Utah to west-central Colorado, and southwest Colorado over the Southwest San Juans

U.S. Drought Monitor 1-Week Change Map



Drought Change Since Last Week



Source(s): NDMC, NOAA, USDA; image courtesy of Drought.gov

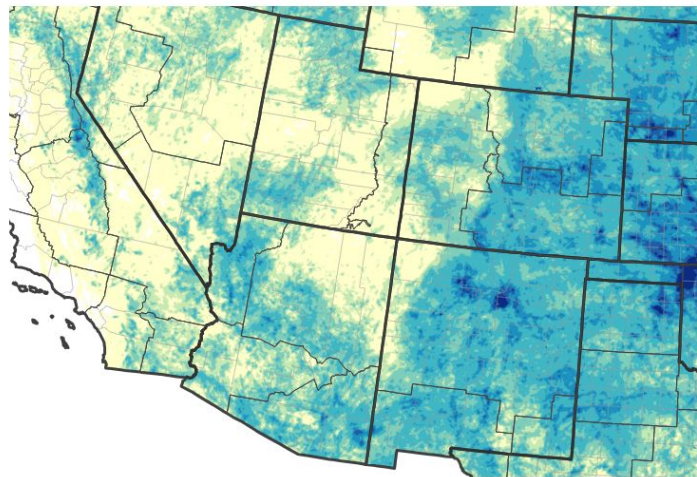
Data Valid: 09/16/25





Precipitation

30-Day Precipitation Accumulations (Inches)



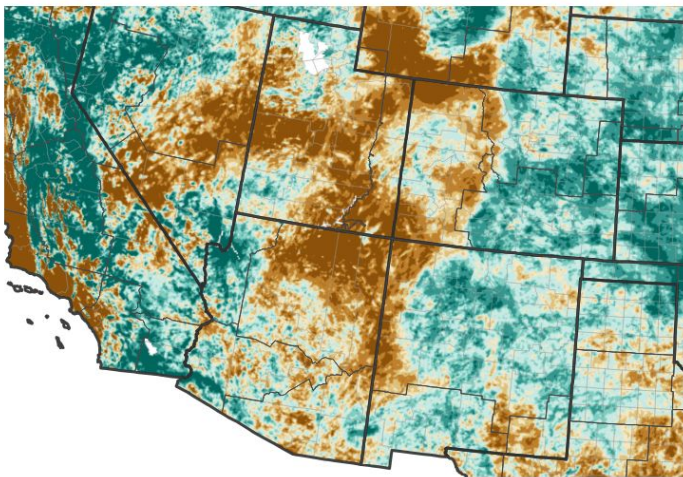
Inches of Precipitation



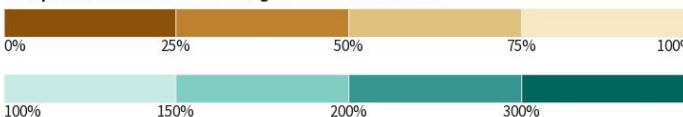
Source(s): National Weather Service Multi-Radar Multi-Sensor System;
image courtesy of Drought.gov

Last Updated: 09/18/25

30-Day Percent of Normal Precipitation



Precipitation Shown as a Percentage of Normal Conditions



Source(s): National Weather Service Multi-Radar Multi-Sensor System;
image courtesy of Drought.gov

Last Updated: 09/18/25

- Monsoon activity returned late August and early September, providing some much needed and widespread precipitation.
- However, the Four Corners region and northwest Colorado/northeast Utah largely missed out on cumulative precipitation. These areas remain less than 25% of normal for the 30-Day period.



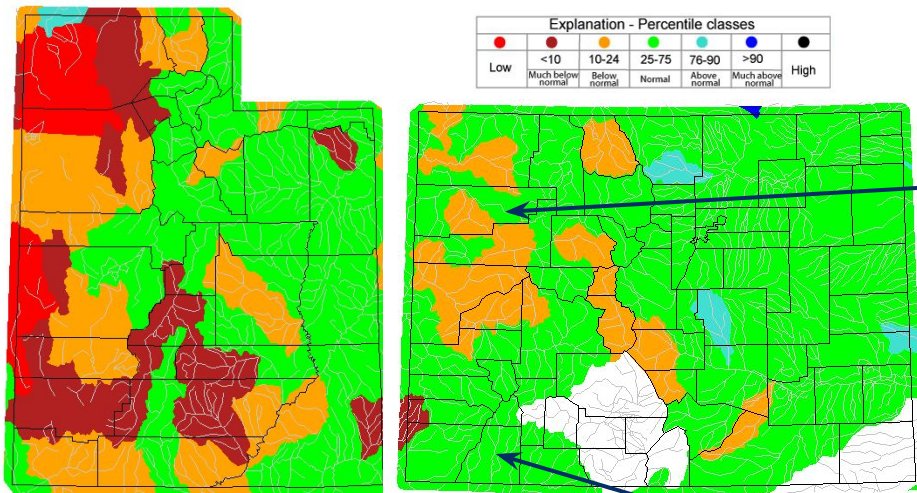
National Oceanic and
Atmospheric Administration
U.S. Department of Commerce



National Weather Service
Grand Junction, CO

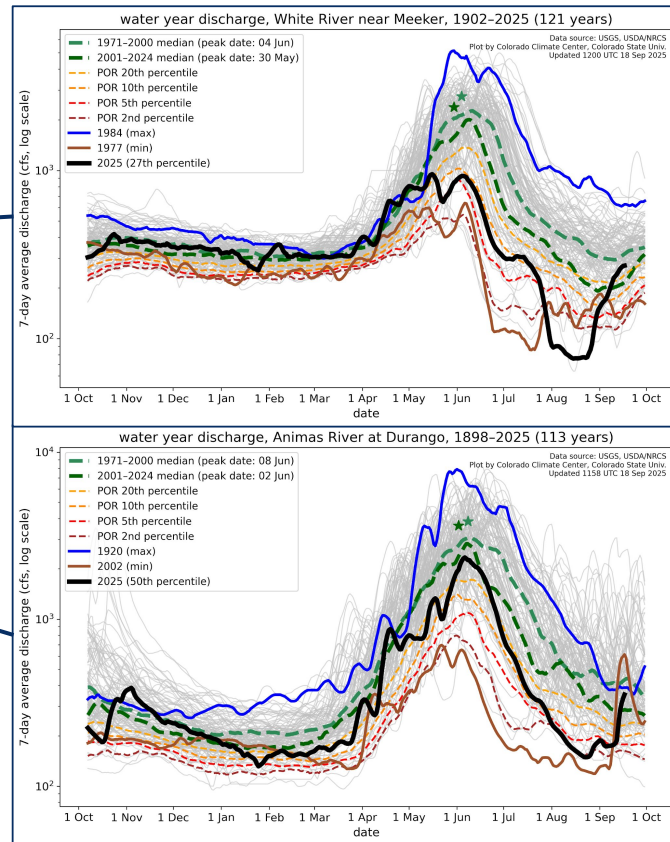


Hydrologic Conditions and Impacts



USGS 7 day average streamflow HUC map valid for the State of CO & UT
Data Valid: 09 17 2025

- Recent monsoon rain has elevated streamflows from *much below normal* to *below normal/normal* categories over the 7-Day average



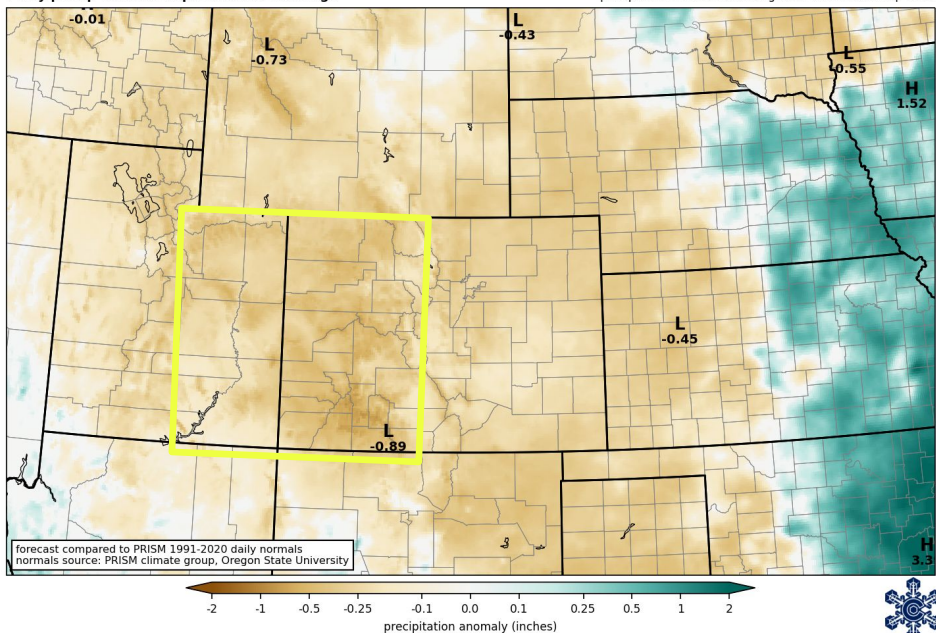


Seven Day Precipitation Forecast

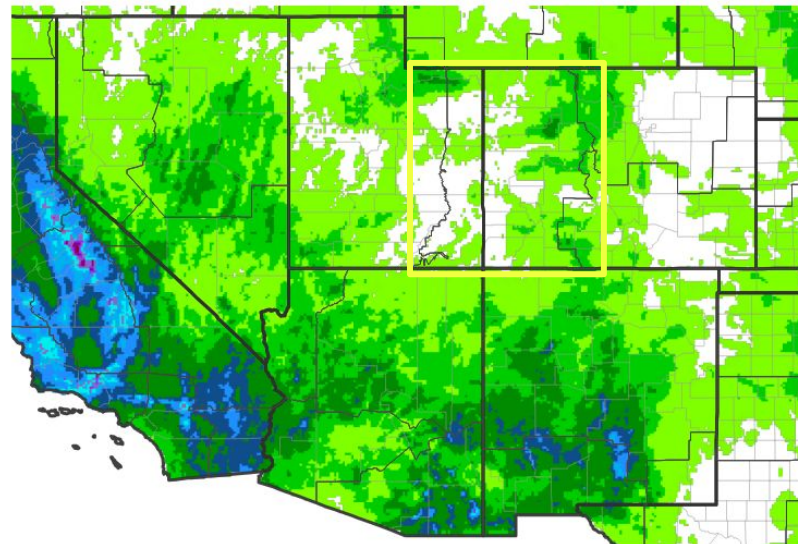
- A quiet period looms over the Western Slope over the next 7 days
- At best, 0.25" of precipitation is possible over higher terrain over the weekend, otherwise the forecast remains dry

NOAA Weather Prediction Center
7-day precip forecast departure from average

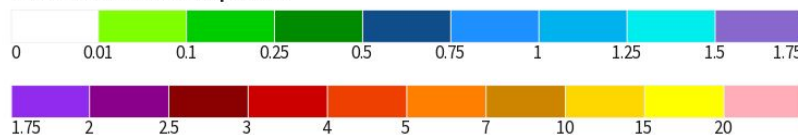
forecast issued 1200 UTC Thu 18 Sep 2025
precipitation in 168 hrs ending 1200 UTC Thu 25 Sep 2025



7-Day Quantitative Precipitation Forecast for September 18, 2025–September 25, 2025



Predicted Inches of Precipitation



Source(s): National Weather Service Weather Prediction Center; image courtesy of Drought.gov

Last Updated: 09/18/25



National Oceanic and
Atmospheric Administration
U.S. Department of Commerce

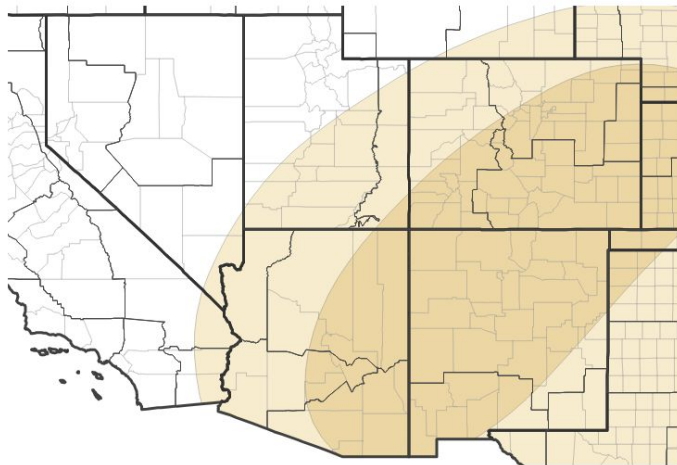
National Weather Service
Grand Junction, CO



Long-Range Outlooks

The latest monthly and seasonal outlooks can be found on the [CPC homepage](#)

Seasonal (3-Month) Precipitation Outlook for October 1, 2025–December 31, 2025



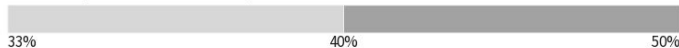
Probability of Below-Normal Precipitation



Probability of Above-Normal Precipitation



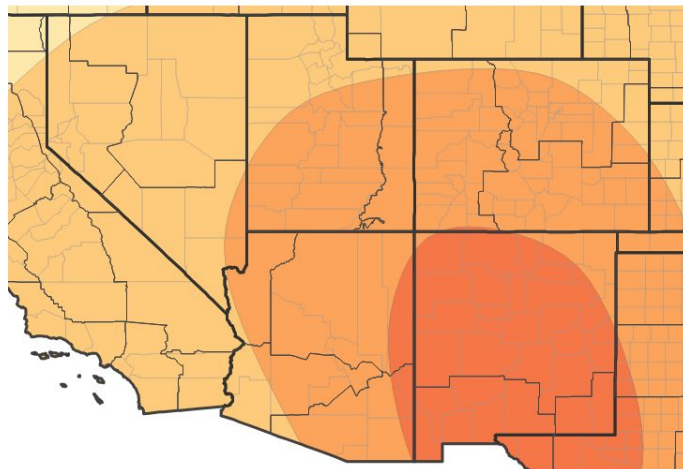
Probability of Near-Normal Precipitation



Source(s): Climate Prediction Center; image courtesy of Drought.gov

Last Updated: 09/18/25

Seasonal (3-Month) Temperature Outlook for October 1, 2025–December 31, 2025



Probability of Below-Normal Temperatures



Probability of Above-Normal Temperatures



Probability of Near-Normal Temperatures



Source(s): Climate Prediction Center; image courtesy of Drought.gov

Last Updated: 09/18/25

- Long range forecasts follow recent trends of abnormally warm temperatures and below normal precipitation through Fall



National Oceanic and Atmospheric Administration
U.S. Department of Commerce



National Weather Service
Grand Junction, CO



Summary of Impacts

Links: See/submit [Condition Monitoring Observer Reports \(CMOR\)](#) and view the [Drought Impacts Reporter](#)

Hydrologic Impacts

- Water conservation is still encouraged

Agricultural Impacts

- Reservoirs in central and southern Utah are going dry, threatening irrigation supplies.

Fire Hazard Impacts

-

Other Impacts

-

Mitigation Actions

- Please refer to your municipality and/or water provider for mitigation information.

