

# NWS GRAND JUNCTION COLORADO



## A LOOK BACK AT **FALL 2023** WEATHER ACROSS E UTAH / W COLORADO

December 1st marked the beginning of Meteorological Winter and the end of Meteorological Fall. Meteorological Fall runs from September 1st through November 30th. Fall 2023 was characterized by short but intense periods of below normal temperatures and precipitation up against a background trend of above normal temperatures and benign weather. While snow started flying early, the sporadic nature of the systems during the season and the above normal temperatures in between each system have somewhat hampered snowpack development in the mountains. As a season, Fall 2023 was overall warmer than normal, with nine of the ten automated reporting stations across eastern Utah and western Colorado rounding out the season with above normal mean temperatures. Only Meeker Airport was consistently below normal. Mean temperatures ranged from 1.5F below normal to 2.2F above normal. The season was also overall drier than normal, with all ten automated observation stations ending the season with below normal precipitation totals. Just enough precipitation has fallen to hold drought degradation beyond Severe (D2) Drought at bay, but barely, as Extreme (D3) Drought is nudging into the region from the southeast.



# FALL 2023 CLIMATE SUMMARY



## TABLE OF CONTENTS

*NOTE: all data mentioned is collected from our automated observing stations from 10 airports across the area. Some observers in more remote areas may have measured warmer or colder temperatures, or more or less precipitation than mentioned in this summary.*

PAGE #	PAGE TITLE
1	Cover
2	Table of Contents
3	Temperatures
4	Precipitation
5	Seasonal Records Report
6	Seasonal Drought Outlook
7	Next Season Outlook





Location	Average Temp (°F) (VS Normal)	Warmest Temp (°F)	Coldest Temp (°F)
Aspen, CO	44.5 <b>(+0.4)</b>	83 on 9/1	-2 on 11/26
Cortez, CO	50.5 <b>(+1.2)</b>	91 on 9/9	10 on 11/27
Craig, CO	45.2 <b>(+0.8)</b>	89 on 9/1	-7 on 11/26
Durango, CO	49.1 <b>(+1.6)</b>	89 on 9/1, 8	5 on 11/27
Grand Junction, CO	55.5 <b>(+2.2)</b>	93 on 9/8	12 on 11/26
Meeker, CO	44.4 <b>(-1.5)</b>	86 on 9/1	-10 on 11/26
Montrose, CO	52.0 <b>(+1.3)</b>	89 on 9/6	13 on 11/27
Rifle, CO	50.6 <b>(+1.1)</b>	90 on 9/1, 6, 9	6 on 11/26
Canyonlands Airport, UT	54.9 <b>(+0.9)</b>	93 on 9/8, 9	14 on 10/30
Vernal, UT	49.6 <b>(+1.0)</b>	89 on 9/9	13 on 10/30

# PRECIPITATION



Location	Total Precipitation (in.)	Departure from Normal (in.)
Aspen, CO	3.34	-0.46
Cortez, CO	2.13	-1.30
Craig, CO	2.68	-1.54
Durango, CO	1.62	-2.91
Grand Junction, CO	1.33	-1.46
Meeker, CO	2.96	-1.46
Montrose, CO	1.53	-1.18
Rifle, CO	2.04	-1.20
Canyonlands Airport, UT	1.35	-0.78
Vernal, UT	0.18	-2.54



# FALL 2023 CLIMATE SUMMARY



SEASONAL  
RECORDS

## R E P O R T

*A total of 5 daily records were set across the primary climate sites*

Site	Date	Record Type	New Record	Previous Record
Grand Junction, CO	September 30th	High Max Temperature	89F	88F in 1957
Grand Junction, CO	October 20th	High Max Temperature	79F	79F in 2003
Grand Junction, CO	October 23rd	High Max Temperature	78F	78F in 1954
Grand Junction, CO	November 6th	High Max Temperature	73F	70F in 1934
Grand Junction, CO	November 25th	Precipitation (Snow Depth)	3 inches	0 inches in 2022

High Max

Low Max

Precip

High Min

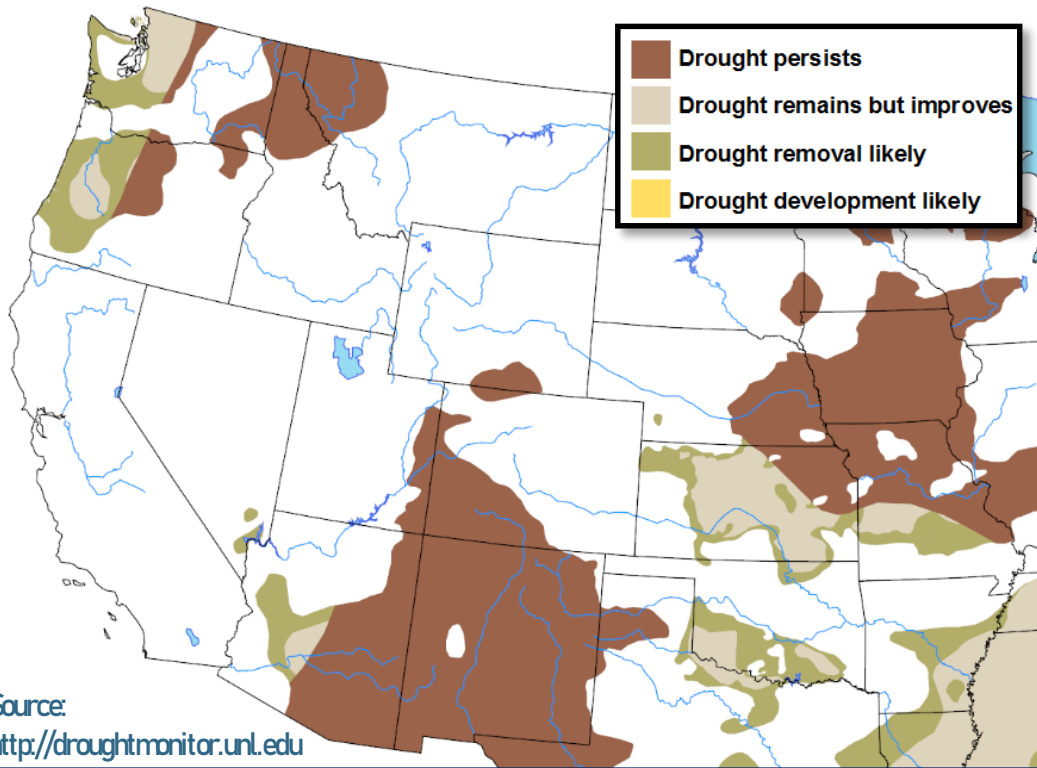
Low Min





*For meteorological winter, the US Drought Monitor's Outlook indicates the Moderate (D1) to Severe (D2) drought (with a small sliver of Extreme (D3) Drought) across much of eastern Utah and western Colorado will persist through the season. Areas north of the I-70 corridor will remain drought free or in Abnormally Dry (D0) conditions.*

## **U.S. Seasonal Drought Outlook** Drought Tendency During the Valid Period





*For Meteorological Winter, the Climate Prediction Center (CPC)'s guidance is leaning toward above normal precipitation across eastern Utah and western Colorado. CPC guidance is favoring equal chances of above or below normal temperatures for the season for the vast majority of eastern Utah and western Colorado, with some areas along the southern Divide mountains seeing a signal of near normal temperatures likely.*

