

NWS GRAND JUNCTION COLORADO



A L O O K
BACK AT

FEBRUARY 2024

WEATHER ACROSS E UTAH / W COLORADO

February continued where January left off, with a continuing parade of mild and wet Pacific systems bringing significant mountain snow. Ahead of each system, temperatures jumped several degrees above normal and then would crash back to near or below normal values. This parade of storms did help the mountain snowpacks to climb up to near normal, even above normal for Utah, for the time of year, something which hasn't been seen since early in the season. This pattern persisted through the month, with warmer than normal and quiet conditions giving way to very unsettled and cooler weather on an almost weekly basis. Snow squalls were also an issue with each cold front passage, as these fronts tended to be quite strong due to the significant temperature differences between pre- and post-frontal air-masses. One impressive snow squall event rounded out the month on the 27th, starting in northeast Utah and northwest Colorado late on the 26th, making the I-70 corridor by daybreak, and continuing to push south through the morning hours. The front and accompanying squall exited western Colorado by noon. The fact that the frontal band held together all the way through the region marks it as something of a rarity, as often in these situations the band washes out somewhere between the I-70 corridor and the northern San Juans.

FEBRUARY 2024

CLIMATE SUMMARY



TABLE OF **C O N T E N T S**

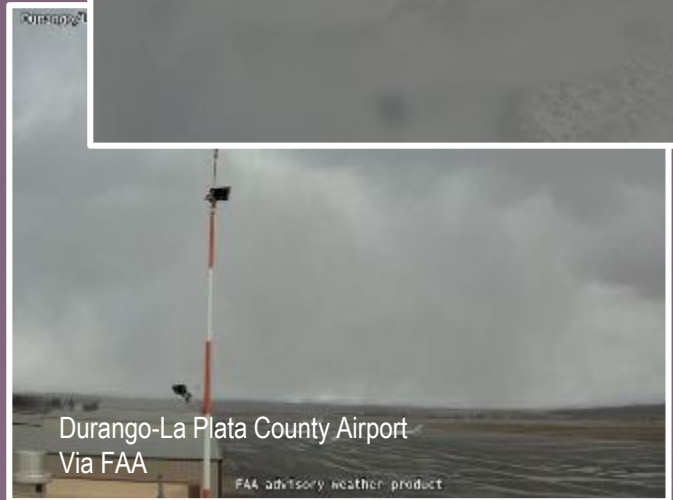
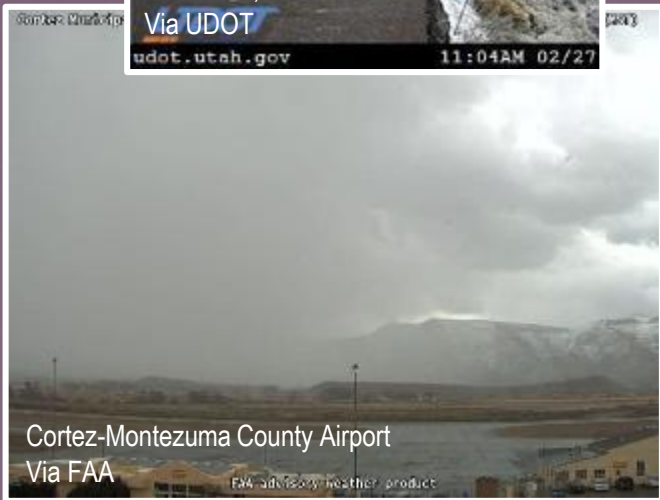
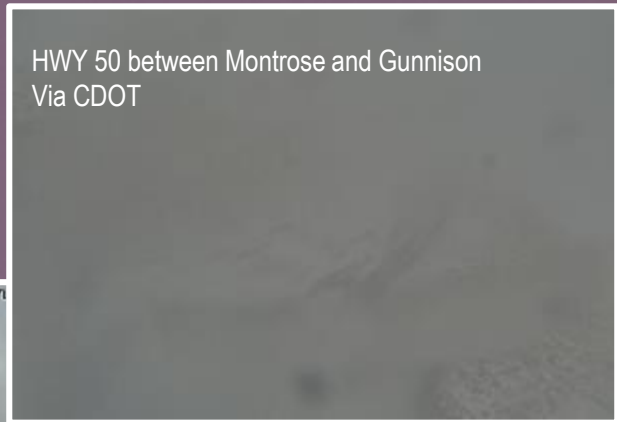
NOTE: all data mentioned is collected from our automated observing stations from 10 airports across the area. Some observers in more remote areas FEBRUARY have measured warmer or colder temperatures, or more or less precipitation than mentioned in this summary.

PAGE #	P A G E T I T L E
1	Cover / Monthly Weather Synopsis
2	Table of Contents
3	Story of the Month
4	Temperatures
5	Precipitation
6	Total Monthly Precipitation
7	Monthly Precipitation Departure from Normal
8	Daily Records Report
9	Drought Conditions, as of March 6th
10	Snowpack Conditions, as of March 1st
11	March Climate Outlook

STORY OF THE MONTH

LATE MONTH SNOW SQUALLS

February definitely saw an uptick in precipitation across the region, with multiple winter storms bringing rain and snow. On the 28th, one such storm brought a strong cold front with it, which dropped south through the entirety of eastern Utah and western Colorado over the course of the day. This front spawned potent snow squalls that led to reduced visibility, snowpacked and slick roads, and overall difficult travel conditions.



FEBRUARY
2024

TEMPERATURES



Location	Average Temp (°F) (VS Normal)	Warmest Temp (°F)	Coldest Temp (°F)
Aspen, CO	26.7 (+1.5)	48 on 2/6, 25	-7 on 2/28
Cortez, CO	35.7 (+2.9)	59 on 2/25, 26	11 on 2/28
Craig, CO	24.6 (+2.4)	49 on 2/26	-9 on 2/28
Durango, CO	34.2 (+4.5)	60 on 2/25	13 on 2/23, 28
Grand Junction, CO	41.0 (+5.1)	66 on 2/26	17 on 2/29
Meeker, CO	27.3 (+0.9)	50 on 2/25, 26	-5 on 2/28
Montrose, CO	36.9 (+3.2)	62 on 2/25	12 on 2/28
Rifle, CO	35.6 (+4.0)	59 on 2/25, 26	10 on 2/28
Canyonlands Airport, UT	38.6 (+2.8)	65 on 2/26	15 on 2/11, 28
Vernal, UT	33.5 (+6.2)	60 on 2/26	5 on 2/11



FEBRUARY
2024

PRECIPITATION



Location	Total Precipitation (in.)	Departure from Normal (in.)
Aspen, CO	0.89	-0.01
Cortez, CO	0.97	-0.04
Craig, CO	1.62	+0.73
Durango, CO	1.03	-0.08
Grand Junction, CO	0.43	-0.10
Meeker, CO	2.39	+1.63
Montrose, CO	0.17	-0.25
Rifle, CO	0.45	-0.15
Canyonlands Airport, UT	0.38	-0.03
Vernal, UT	0.47	-0.09

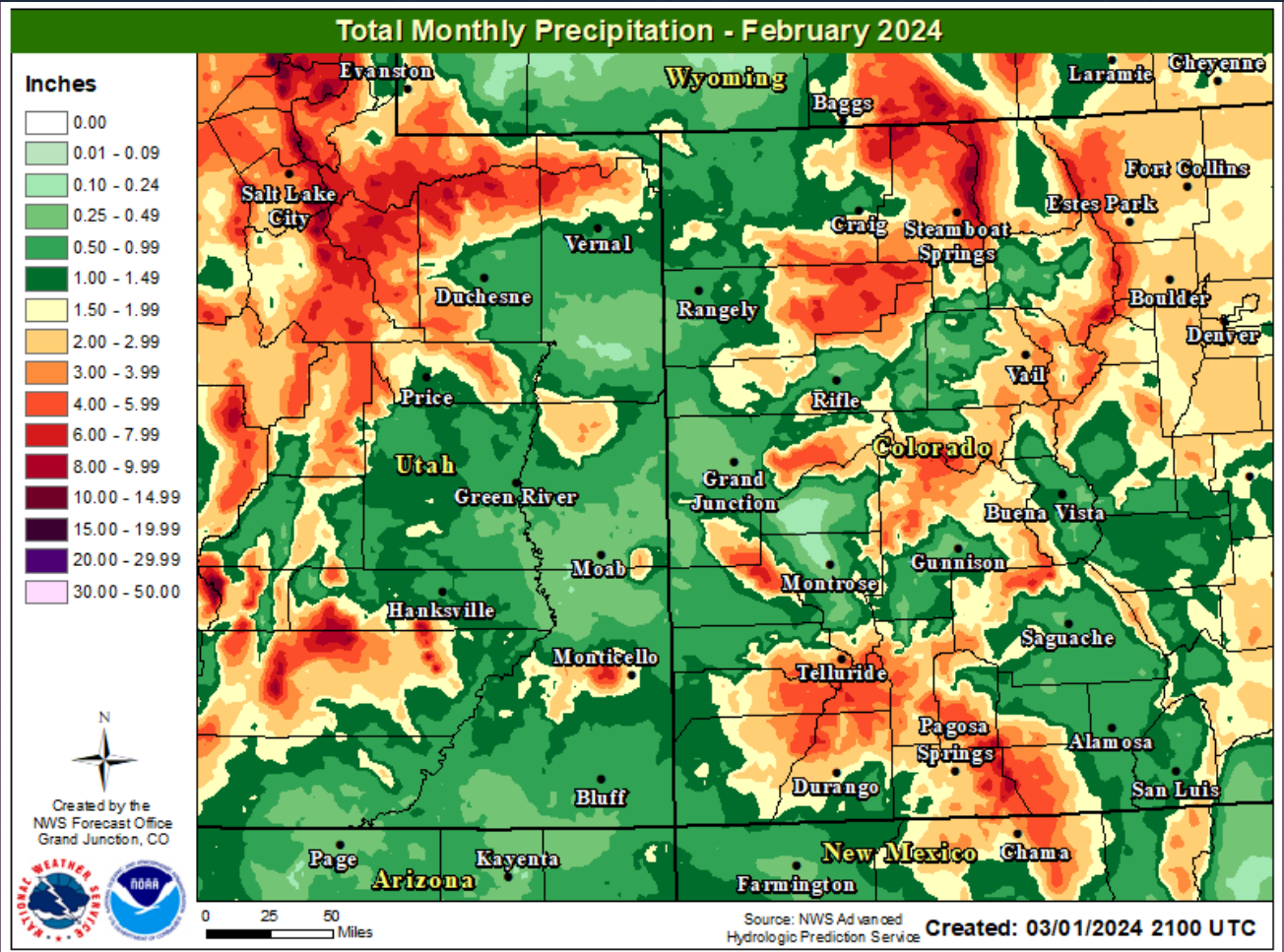


FEBRUARY 2024

CLIMATE SUMMARY



TOTAL MONTHLY PRECIPITATION



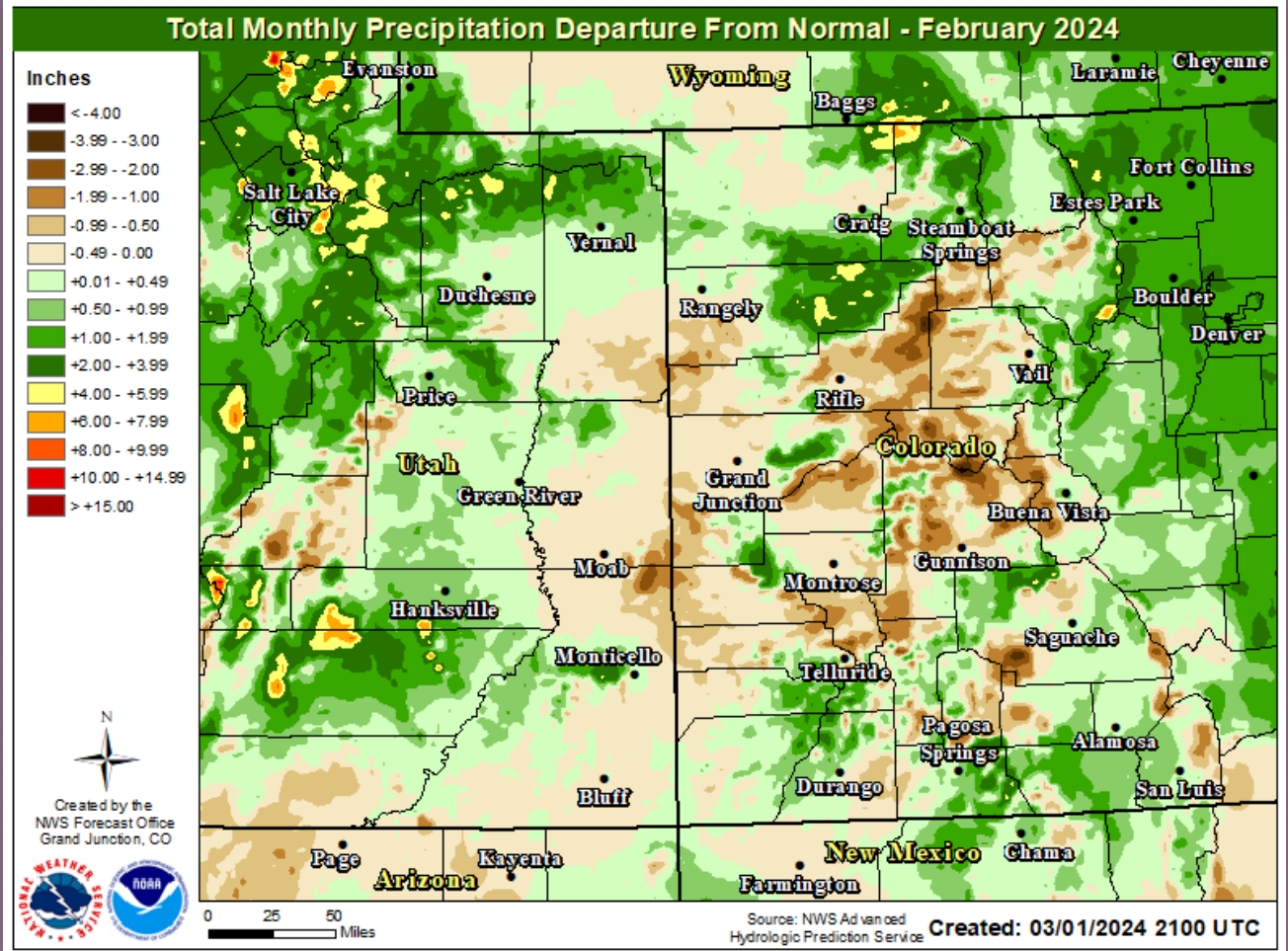
FEBRUARY 2024

CLIMATE SUMMARY



TOTAL MONTHLY PRECIPITATION

DEPARTURE FROM NORMAL



FEBRUARY 2024

CLIMATE SUMMARY



DAILY RECORDS **REPORT**

A total of 0 daily records were set across the primary climate sites

Site	Date	Record Type	New Record	Previous Record
------	------	-------------	------------	-----------------

High Max

Low Max

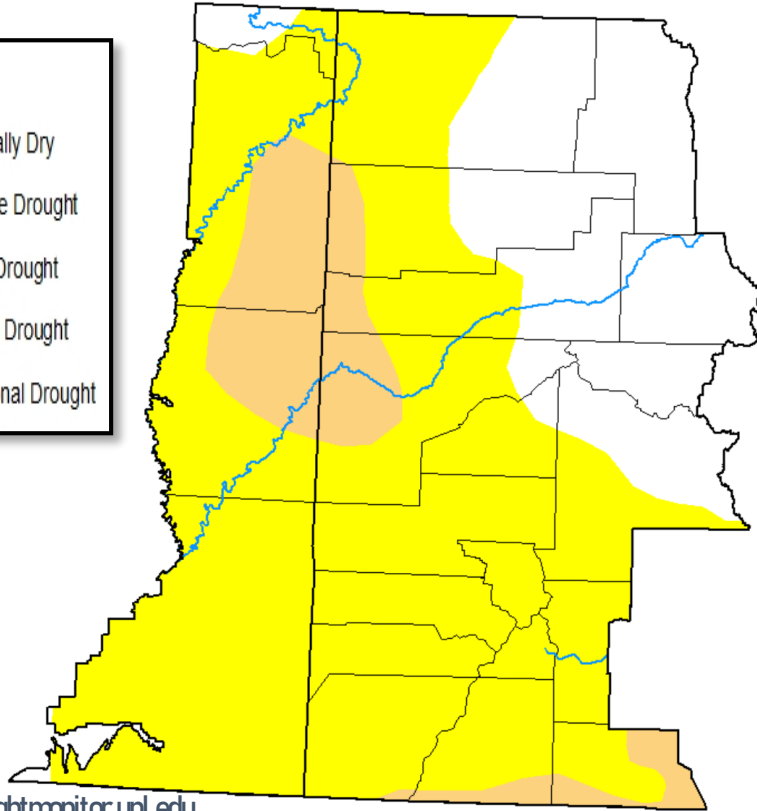
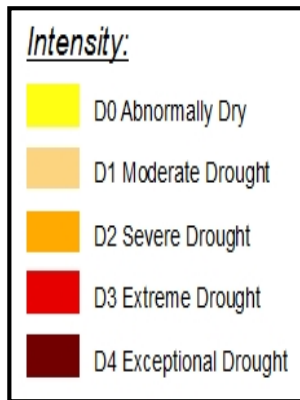
Precip

High Min

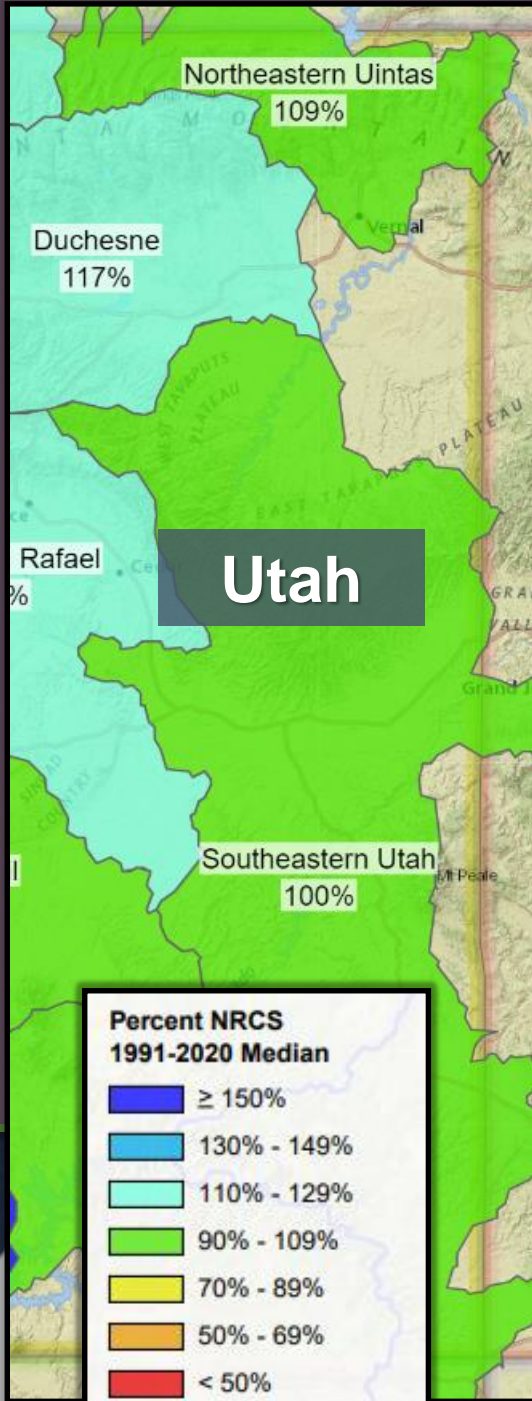
Low Min



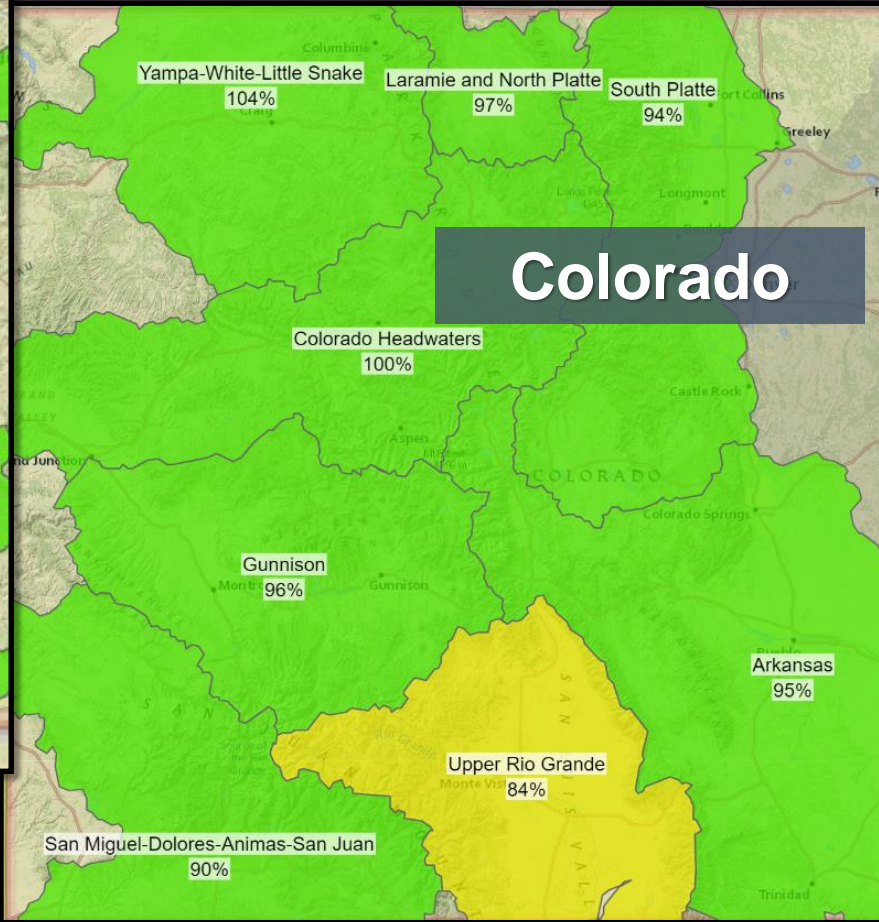
The parade of mild and wet Pacific systems continued into and through the month of February, leading to continued steady improvement in drought. All Severe (D2) Drought has been eliminated, and only two pockets of Moderate (D1) Drought remain. Abnormally Dry (D0) conditions remain across a majority of the area, but has been eliminated for the Northeastern Uintas and the northern and central western Colorado mountains, and even into some of the higher elevation valleys.



Source: <http://droughtmonitor.unl.edu>



February continued the trend set in January, with mild and wet storms bringing significant gains to mountain snowpacks, with a slight favoring to the northern basins. In eastern Utah, the Northeastern Uintas and Southeastern Utah basins finished the month with 100-110% of normal, while the Duchesne Basin finished with 110-120% of normal. In western Colorado, the San Miguel-Dolores-Animas-San Juan and Gunnison Basins finished the month with 90-100% of normal, while the Yampa-White-Little Snake and Colorado headwaters finished the month with 100-110% of normal as well.



**Percent NRCS
1991-2020 Median**

- ≥ 150%
- 130% - 149%
- 110% - 129%
- 90% - 109%
- 70% - 89%
- 50% - 69%
- < 50%
- No basin value

Watershed Boundaries

- Region (2-Digit HUC)
- State Watersheds

M A R C H
2 0 2 4

OUTLOOK

TEMPERATURES & PRECIPITATION



The latest guidance from the Climate Prediction Center (CPC) indicates that above normal precipitation is likely (50-60%) across a large portion of eastern Utah and western Colorado. Areas of southeast Utah and southwest Colorado are slightly less favored (33-50%) than areas north. Temperature guidance indicates equal chances of above or below normal temperatures are favored for the majority of western Colorado, as well as northeast Utah. The remainder of eastern Utah and the Four Corners area of southwest Colorado are slightly favored (33-40%) to see below normal temperatures during the month of March.



Precipitation



Temperatures

