



Drought Information Statement for Tri-State Area

Valid July 5, 2026

Issued By: NWS Goodland, Kansas

Contact Information: nws.goodland@noaa.gov

- This product will be updated by the 5th of each month or sooner if drought conditions change significantly.
 - Please see all currently available products at <https://drought.gov/drought-information-statements>.
 - Please visit <https://www.weather.gov/GLD/DroughtInformationStatement> for previous statements.
 - Please visit <https://www.drought.gov/drought-status-updates> for regional drought status updates.
-
- The Tri-State area saw mixed conditions in June. Some areas saw much above normal rainfall resulting in considerable improvement in drought conditions, while other areas saw below normal rainfall.
 - The seasonal outlook indicates that the relief from drought conditions may be temporary, with drought forecast to persist or develop through September.





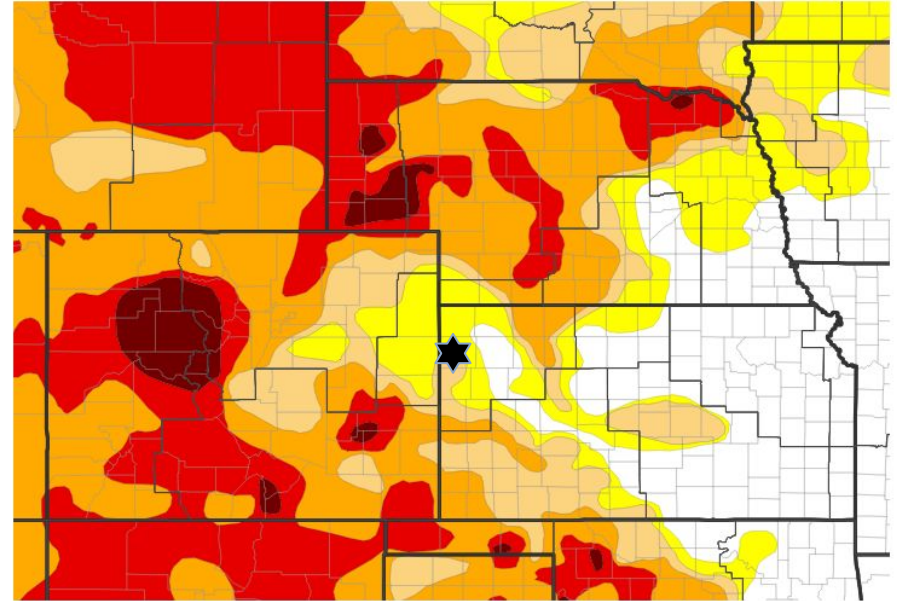
U.S. Drought Monitor

Link to the [latest U.S. Drought Monitor](#) for High Plains

Drought intensity and Extent by County

- **Extreme Drought:** Red Willow
- **Severe Drought:** Decatur, Norton, Sheridan, Graham, Cheyenne CO, Greeley, Wichita, Hitchcock
- **Moderate Drought:** Wallace, Sherman
- **Abnormally Dry:** Yuma, Kit Carson, Dundy, Cheyenne KS, Rawlins, Logan, Thomas, Gove

U.S. Drought Monitor



U.S. Drought Monitor



Source(s): NDMC, NOAA, USDA, NASA; image courtesy of Drought.gov

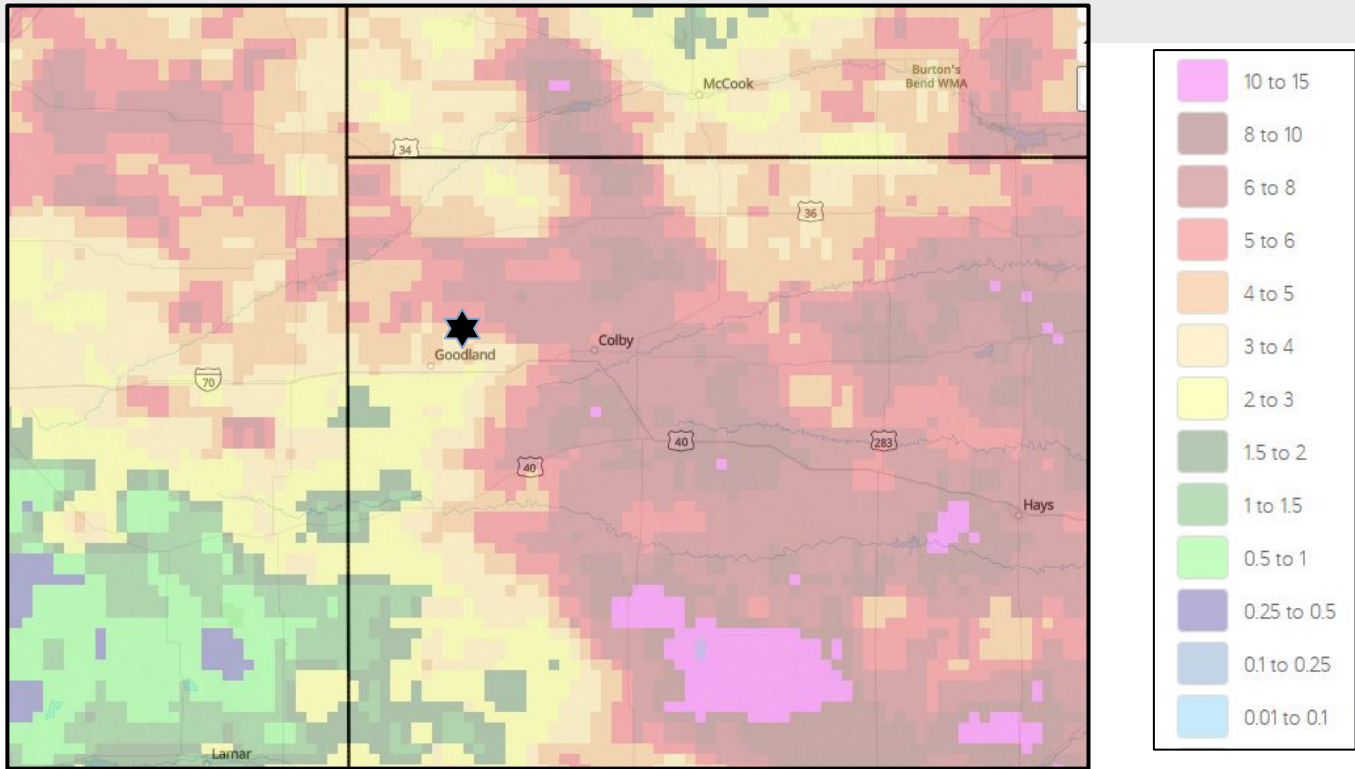
Data Valid: 06/30/26

★ Star is centered on Goodland in all following maps.





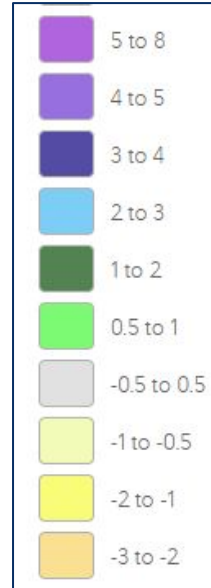
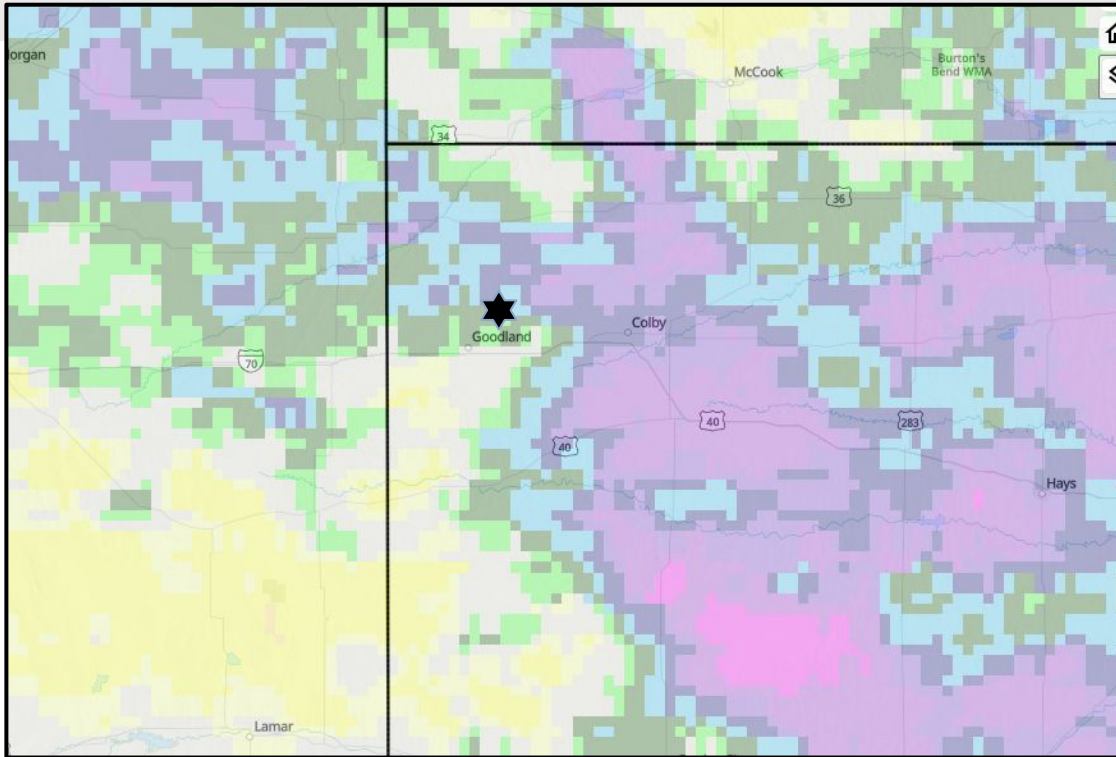
June Precipitation - Observed



Actual precipitation amounts in June varied by a large amount. The heaviest rain occurred in eastern portions of the area, near Colby and areas generally to the south (red shading). Lower amounts were observed in western areas, particularly south of Interstate 70 and west of Highway 27 into Colorado, as well as near McCook and south to Oberlin (yellow shading).



June Precipitation - Departure from Normal



June precipitation amounts compared to normal ranged from much above normal around Colby and points south (blue and purple shading) to below normal generally south of Interstate 70 and west of Highway 25 including Colorado (yellow shading).





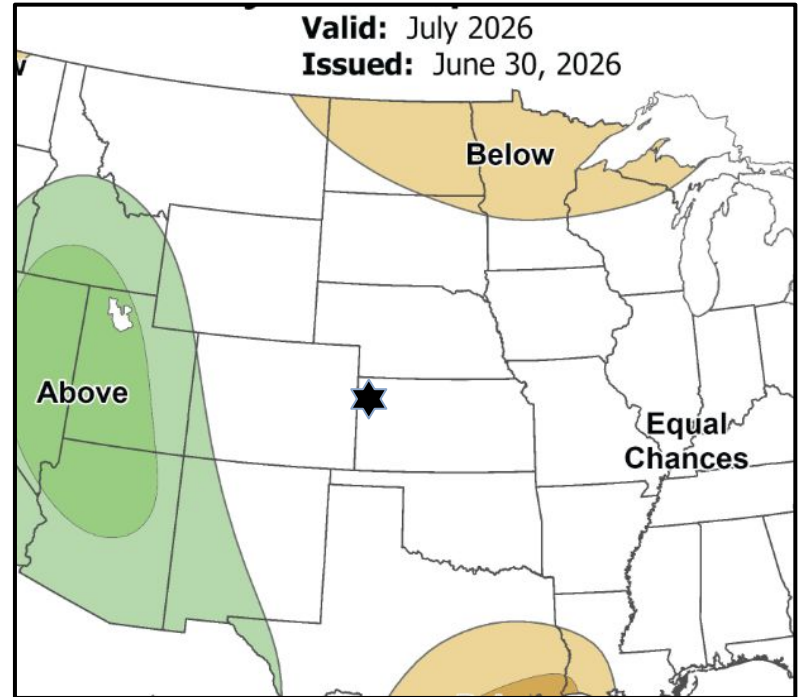
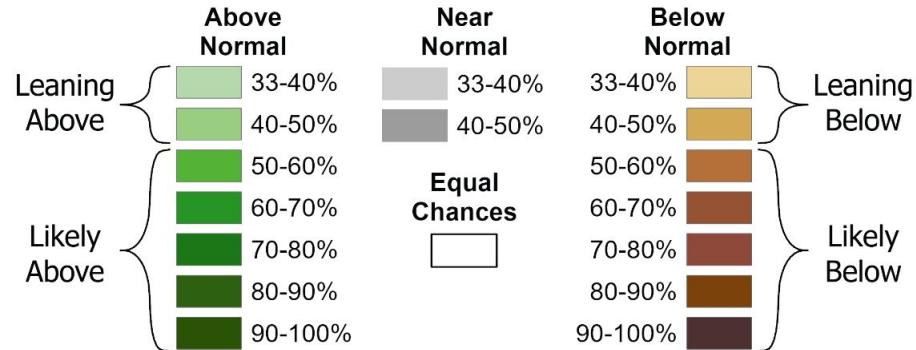
Monthly Precipitation Outlook: July 2026

The latest monthly and seasonal outlooks can be found on the [CPC homepage](#)

Comments:

- Equal chances for above, below or near normal is forecast for July.

Probability (Percent Chance)





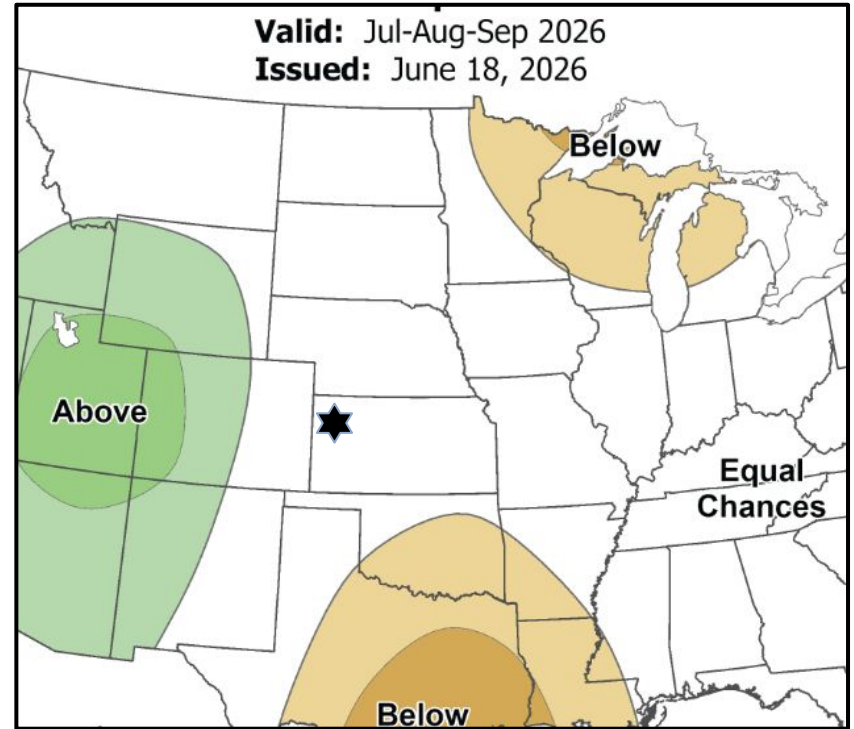
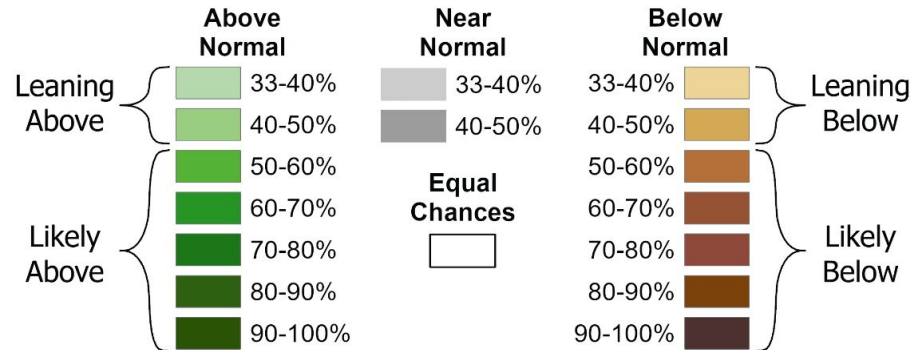
Seasonal Precipitation Outlook: July-September 2026

The latest monthly and seasonal outlooks can be found on the [CPC homepage](#)

Comments

- Equal chances for above, below or near normal through September 2026.

Probability (Percent Chance)



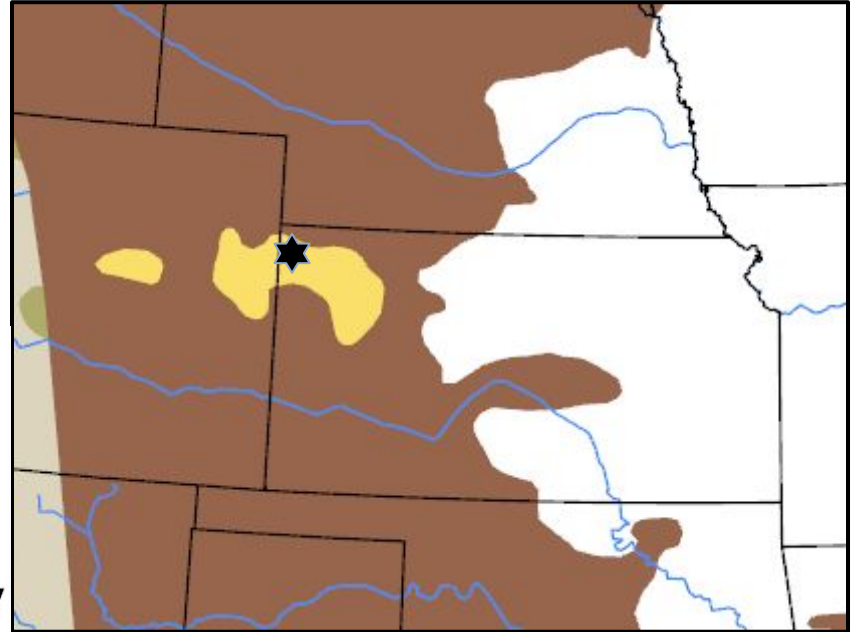
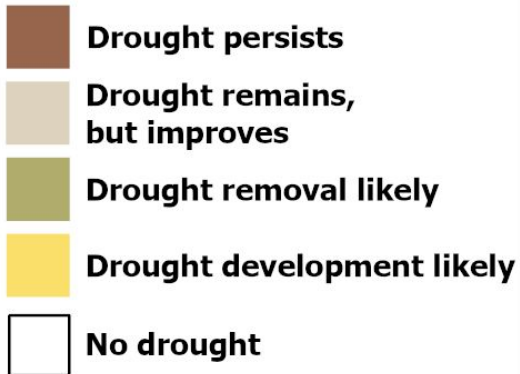


Seasonal Drought Outlook: Through September 2026

The latest monthly and seasonal outlooks can be found on the [CPC homepage](#)

Comments

- Drought persistence and development are forecast.





Summary of Impacts

Links: See/submit [Condition Monitoring Observer Reports \(CMOR\)](#) and view the [Drought Impacts Reporter](#)

Hydrologic Impacts

- There are no known impacts at this time

Agricultural Impacts

- USDA Nebraska Crop Progress and Condition Reports can be found [here](#)
- USDA Kansas Crop Progress and Condition Reports can be found [here](#)

Fire Hazard Impacts

- Fuels are dry across the entire area. Windy days with low humidity will have a risk for wildfires.
- **Other Impacts** : There are no known impacts at this time

Mitigation Actions

- Please refer to your municipality and/or water provider for mitigation information.





Contact Information

For feedback, comments, questions specific to the Drought Information Statement please reach out to:

nws.goodland@noaa.gov

