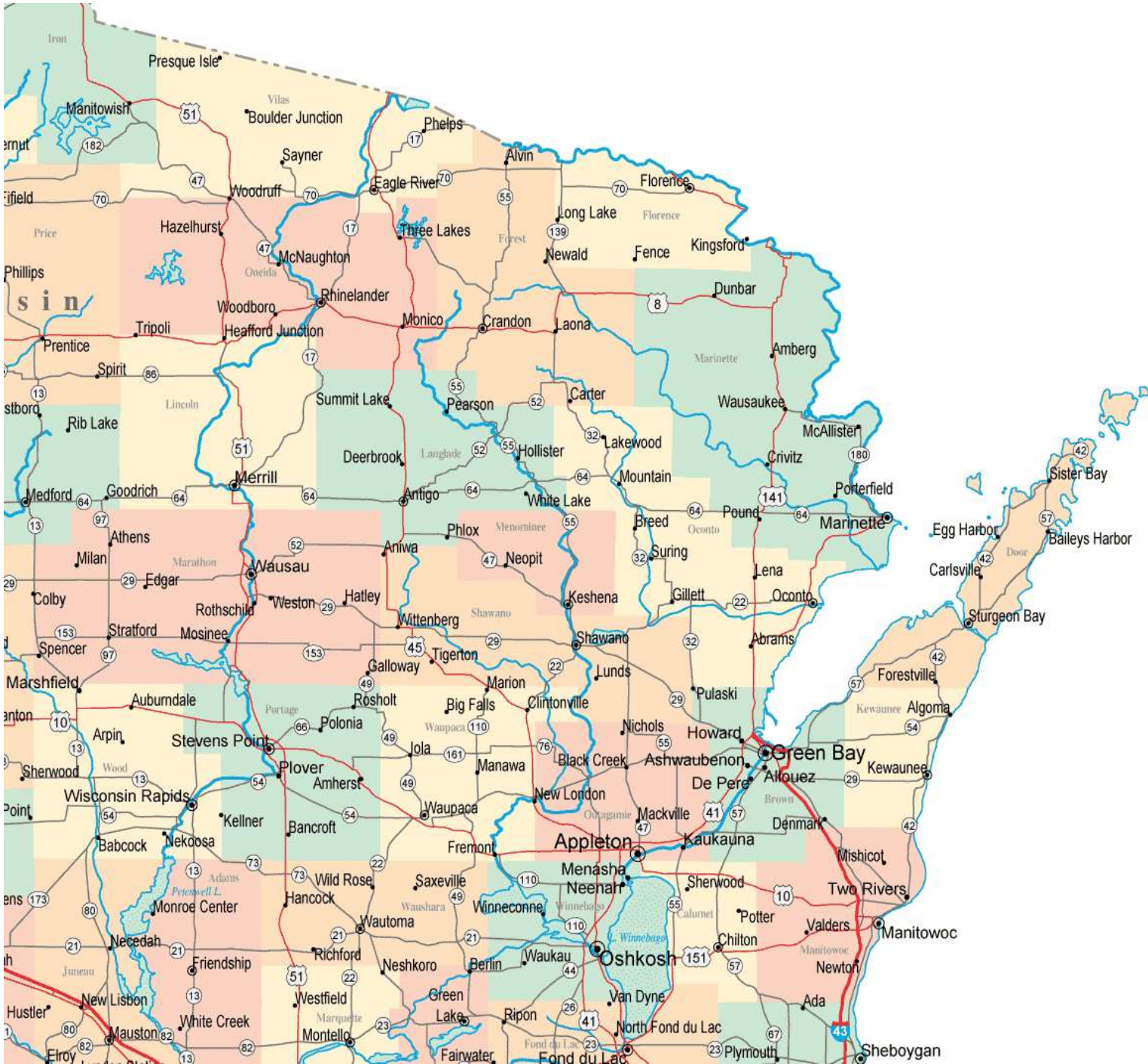


# F/EF3 TORNADO & WATERSPOUT GUIDE (1950-2023) FOR NORTH-CENTRAL AND NORTHEAST WISCONSIN

Updated: 1/1/24



**F/EF3 TORNADO & WATERSPOUT GUIDE (1950-2023)**  
**FOR NORTH-CENTRAL AND NORTHEAST WISCONSIN**

**BROWN**

**MENOMINEE**

**CALUMET**

**OCONTO**

**DOOR**

**ONEIDA**

**FOREST**

**OUTAGAMIE**

**FLORENCE**

**PORTAGE**

**KEWAUNEE**

**SHAWANO**

**LANGLADE**

**VILAS**

**LINCOLN**

**WAUPACA**

**MANITOWOC**

**WAUSHARA**

**MARATHON**

**WINNEBAGO**

**MARINETTE**

**WOOD**

# F/EF3 TORNADO & WATERSPOUT REFERENCE GUIDE

Event	Date			Time		TOR in GRB Service Area
#	Month	Day	Year	(CST)	Start / End Location	County or Counties
1	9	18	1950	14:30	2 N Waupaca - Weyauwega	Waupaca
2	6	4	1958	19:30-20:06	6 SE Chippewa Falls - 2 NW Athens	Marathon
3	6	26	1969	11:15-11:30	Black Creek - 8 W Sobieski	Outagamie - Shawano - Oconto
4	12	1	1970	10:15-10:45	Near Medina - Rose Lawn	Outagamie - Shawano
5	9	28	1971	14:00-16:05	23 NE Eau Claire - Merrill	Lincoln - Marathon
6	9	28	1971	16:00-17:20	3 NE Brokaw - Middle Inlet	Marathon - Langlade - Oconto - Marinette
7	8	31	1977	18:15	1 SW Stratford - Wausau	Marathon
8	4	27	1984	14:37-15:07	Fawn Lake - Star Lake	Oneida - Vilas
9	4	27	1984	14:55-15:40	Union (Waupaca Co) - Legend Lake	Menominee - Shawano - Waupaca
10	6	8	1985	18:15-18:52	Park Falls - 3 SE Monico	Oneida
11	7	4	1986	19:00-19:25	2 S Niagara - Carney/Nadeau, MI	Marinette
12	8	29	1992	19:10-19:55	1 N Wautoma - 3 SE Poysippi	Waushara
13	8	23	1998	17:30-17:44	3 SW Egg Harbor - 5 SE Egg Harbor	Door
14	6	7	2007	15:31-16:18	2 ENE Mattoon - 9.5 ENE Lakewood	Shawano - Langlade - Oconto
15	4	10	2011	17:08-17:41	2 N Hamburg - 1 SW Bloomville	Marathon - Lincoln

## Event 1: September 18, 1950

The F3 tornado touched down in Waupaca County 2 miles north of Waupaca around 2:30 PM CST and traveled to Weyauwega before dissipating. Storm data was not available at this time and I could not find any additional newspaper articles on this tornado event.

## Event 2: June 4, 1958

According to several sources, it appears that there was a long tracked F3 tornado that developed 6 miles southeast of Chippewa Falls in Chippewa County around 7:30 PM CST. The tornado then moved to the east northeast for just over 59 miles before dissipating 2 miles northwest of Athens in Marathon County around 8:06 PM CST. The tornado reached a maximum width of 880 yards. Newspaper accounts indicated there were three separate tornadoes during this event. The tornado or tornadoes killed 28 people across western Wisconsin. Four people died in Chippewa Falls and near Menominee while two deaths were reported Knapp and Boyd in western Wisconsin.

## Event 3: June 26, 1969

A rare morning tornado was reported across northeast Wisconsin. Around 11:15 AM CST, the F3 tornado was noted moving northeast between Black Creek and near Pulaski in Outagamie County. The tornado traveled across far southeast Shawano County before dissipating 8 miles west of Sobieski in Oconto County around 11:30 AM CST. The tornado caused extensive damage to trees and buildings in Black Creek, Seymour, Hofa Park, Elm Lawn and near Pulaski. A seven year old girl was hospitalized from injuries when a barn fell on her. The tornado traveled 18 miles and reached a maximum width of 100 yards.

# **F/EF3 TORNADO & WATERSPOUT REFERENCE GUIDE**

## **Event 4: December 1, 1970**

The F3 tornado developed around 10:15 AM CST near Medina in Outagamie County. The tornado moved northeastward at approximately 50 mph destroying about twenty barns and five homes. The tornado caused additional property damage along a track from Medina to Black Creek and beyond to near County Trunk C in southeastern Shawano County. The tornado was 200 yards, traveled 30 miles before dissipating around 10:45 AM CST near Rose Lawn in Shawano County. Damage to farm buildings was estimated at \$500,000 dollars. Damage to a transmission line a mile and a half east of Stephenville was estimated at \$100,000.

## **Event 5: September 28, 1971**

A cold front moving through the state triggered scattered thunderstorms across the state. On this date, two long tracked F3 tornadoes were noted from near Stanley in western Wisconsin to Oconto County. The first tornado touched down 23 miles northeast of Eau Claire just south of Boyd and Stanley in Chippewa County around 2 PM CST. The tornado continued just south of Owen, north of Curtiss and south of Dorchester in Clark County. The tornado then moved into Marathon County south of Athens then weakened over Hamburg before finally dissipating just north of Merrill in Lincoln County around 4:05 PM CST. The tornado reached a maximum width of 300 yards and traveled 75 miles before dissipating. Damage was estimated near two million dollars.

## **Event 6: September 28, 1971**

The second F3 tornado developed over the town of Hewitt northeast of Wausau in Marathon County around 4 PM CST. The town hall and four barns were destroyed in Hewitt. The tornado continued east northeast into Langlade County, passing about 6 miles south of Antigo and moved across the extreme northwest corner of Menominee County just south of White Lake. The tornado moved into Oconto County near Mountain, and then into Marinette County to Middle Inlet where the tornado dissipated around 5:20 PM CST. The tornado traveled 78 miles and reached a maximum width of 300 yards. The most severe damage occurred at Mountain where damage to buildings and trailers were estimated at \$200,000 dollars. Extensive damage to property and trees was reported in the Boulder Lake area where the lake level was reported to have dropped 5 inches. One person was injured at White Lake and four injuries were noted at Mountain, none seriously.

## **Event 7: August 31, 1977**

On the evening of the 31<sup>st</sup>, a devastating F3 tornado spun out a 27 mile-path of destruction across Marathon County around 6:15 PM CST. The first sighting of the tornado came seven miles southwest of Fenwood. The funnel base was described as reaching tree top levels as it downed barns in the area. The tornado continued to near Marathon City where more barns were destroyed. The tornado caused extensive damage to Ginseng crops in the area. In Rib Mountain, 15 homes were demolished, and 30 others were severely damaged. The storm moved into southwest Wausau damaging a mill and lumber yard. As the funnel cloud moved across the southern end of Wausau, brief touchdowns were noted at Grand Avenue and at Tenth and Manson Streets. The funnel lifted and moved eastward out of the city limits of Wausau, touching down for a final time on Linden Street. Barns and sheds were destroyed on Linden. The tornado reached a maximum width of a thousand yards. Property damage was close to two million dollars.

## **Event 8: April 27, 1984**

The F3 tornado developed near Fawn Lake in Oneida County around 2:37 PM CST. The tornado traveled to near Star Lake in Vilas County before dissipating around 3:07 PM CST. The tornado leveled several thousand acres of forest, destroyed or damaged 80 homes and cabins, ripped up docks and tossed boats in the air or wrapped them around trees. A Fawn Lake man was killed after getting his family to safety. The hardest hit areas were Fawn Lake, Two Lakes, Hasbrook and Gilmore Lakes in Oneida County. In Vilas County, the hardest hit areas were St. Germain Lake, Lost Lake and Star Lake. The tornado traveled 29 miles and reached a maximum width of 880 yards.

# **F/EF3 TORNADO & WATERSPOUT REFERENCE GUIDE**

## **Event 9: April 27, 1984**

The F3 tornado touched down on April 27th in Union township in Waupaca County around 2:55 PM CST. The tornado skipped north northeast to Legend Lake in Menominee County where the tornado dissipated around 3:40 PM CST. The tornado traveled 32 miles and reached a maximum width of 440 yards. Damage occurred to 41 homes and cabins, 5 barns, 19 garages and sheds as well as several hundred acres of forest. The hardest hit areas were around Marion in Waupaca County, the town of Pella in Shawano County, and the South Branch-Legend Lake areas of Menominee County. Overall, there were six tornadoes on this date across north central and northeast Wisconsin. The strongest tornado (F4) occurred across Winnebago and Outagamie Counties around the same time these two tornadoes occurred. Across the state of Wisconsin, there were ten tornadoes reported on this date.

## **Event 10: June 8, 1985**

A severe thunderstorm spawned a killer F3 tornado and dropped large hail as it rolled through Price and Oneida Counties, causing widespread property, crop, and timber damage. The tornado skipped from Park Falls to about 15 miles southeast of Rhinelander. The tornado first touched down one mile west of Park Falls around 6:15 PM CST and moved through the southern portion of the city. In Park Falls, 125 buildings were damaged with 12 houses and businesses were heavily damaged or destroyed. 26 people received mostly minor injuries in Park Falls. The tornado continued southeast, cutting an eighteen mile and 1.5 miles wide swath through eastern Price County and into Minocqua in Oneida County where the tornado dissipated around 6:52 PM CST. Two people were killed and sixteen injured at Swamsauger Lake and Cedar Falls resort in the Willow Reservoir area in Oneida County. A man apparently drowned when the tornado lifted him and his house and deposited it into Swamsauger Lake. A woman was killed when a tree crashed through a vehicle in which she was seeking refuge. The tornado continued to the southwest portion of Rhinelander and then dissipated southeast of Monico. A total of 47 residences were heavily damaged or destroyed while another 43 more received some damage in Oneida County. 9,900 acres of timber and cranberry bogs were lost in Oneida County.

## **Event 11: July 4, 1986**

The F3 tornado touched down 2 miles south of Niagara in Marinette County at Highway 8 and Highway 141 around 7 PM CST. The tornado demolished a building next to a restaurant and slashed some trees. The tornado then skipped east-southeast and destroyed a home and garage, carrying its roof a half mile away. The tornado crossed the Menominee River and into the Carney-Nadeau area of Menominee County, Michigan around 7:25 PM CST. The tornado traveled 8 miles and was 100 yards wide.

## **Event 12: August 29, 1992**

The F3 tornado touched down east of Big Flats in Adams County around 7 PM CST. The tornado skipped along a five-mile path, toppling trees, and downing a 24 by 30-foot building. The killer tornado traveled a 28-mile path across Adams and Waushara Counties. The tornado was noted north of Coloma 7:10 PM just CST. The tornado then moved to Wautoma to just north of Redgranite and then to three miles southeast of Poy Sippi before dissipating around 7:55 PM CST. The hardest hit area was just south of Wautoma where a woman was killed when her mobile home was hurled several hundred feet into a parking lot. In addition, 30 people were injured, several critically. The tornado caused over ten million dollars in damage. All-together, forty-eight homes were destroyed, and ninety-five other structures sustained major damage, 289 received minor damage. 950 acres of trees were toppled by the tornadic winds.

# F/EF3 TORNADO & WATERSPOUT REFERENCE GUIDE

## Event 13: August 23, 1998

Article written by National Weather Service Green Bay Staff

The F3 tornado struck a rural section of central Door County in Northeast Wisconsin during the evening of August 23, 1998. The multiple-vortex tornado was on the ground for nearly 14 minutes and carved a path of damage 5.1 miles long and 1/4 to over 1/2 mile wide at times. Damage was estimated at nearly \$7 million. The tornado, which moved off the waters of Green Bay, moved on shore three miles southwest of Egg Harbor at 5:30 PM CST, near Horseshoe Bay. Thousands of trees were snapped or uprooted as the tornado moved across the heavily wooded area in Murphy Park. The width of the damage path just after it came on shore was nearly one-half mile! The tornado then crossed Highway 42 at about 5:34 PM CST, severely damaging several houses and businesses. Damage in this area was rated F2 on the Fujita Scale of F0 to F5. About three minutes later the tornado ripped a two-story farmhouse off its foundation, dropping it 20 yards away. Based on the house's construction, damage in this area was rated F3. Nearby, a campground was hit, causing considerable damage there to trees and campers. Amazingly, only two people were injured. The tornado weakened shortly thereafter, lifting off the ground three miles west-northwest of Jacksonport at around 5:44 PM CST.



### AUGUST 23, 1998 DOOR COUNTY F3 TORNADO

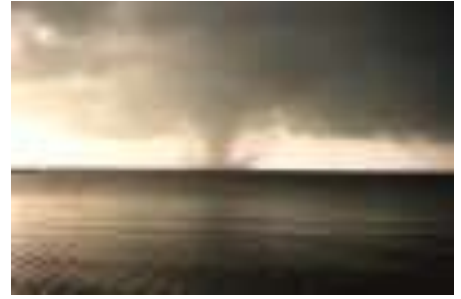
This photo was taken about the time the super cell thunderstorm was entering the Bay of Green Bay, off the Menominee, Michigan coast around 5:05 PM CST. The picture was taken 75 miles south of the storm. (Photograph © 1998 Michael Schardt)



This picture was taken around 5:15 PM CST, about the time the supercell was producing a waterspout on the bay. The picture was taken 25 miles south of the storm. (Photograph © 1998 Ray Fulwiler)

# F/EF3 TORNADO & WATERSPOUT REFERENCE GUIDE

## Event 13: August 23, 1998 Continued



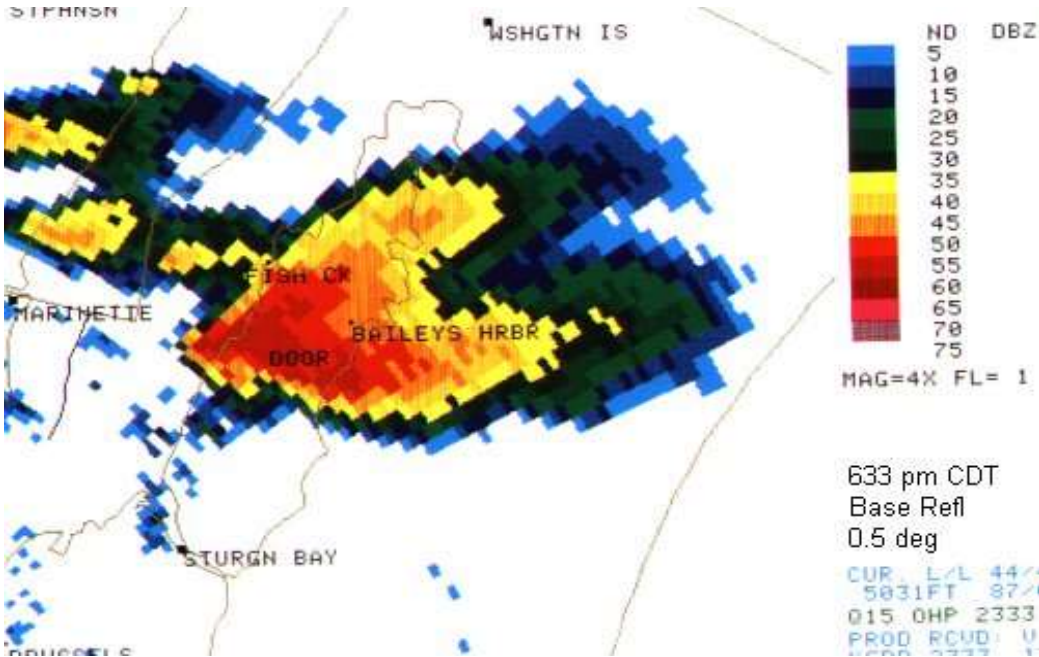
These photos were taken by Tom Janssen II at Murphy Park, which was hit by the tornado. The two on the left show the waterspout just after it developed, around 5:15 PM CST. The third picture was taken a little after 5:20 PM CST. The tornado was off the Door county shore over the Bay of Green Bay.



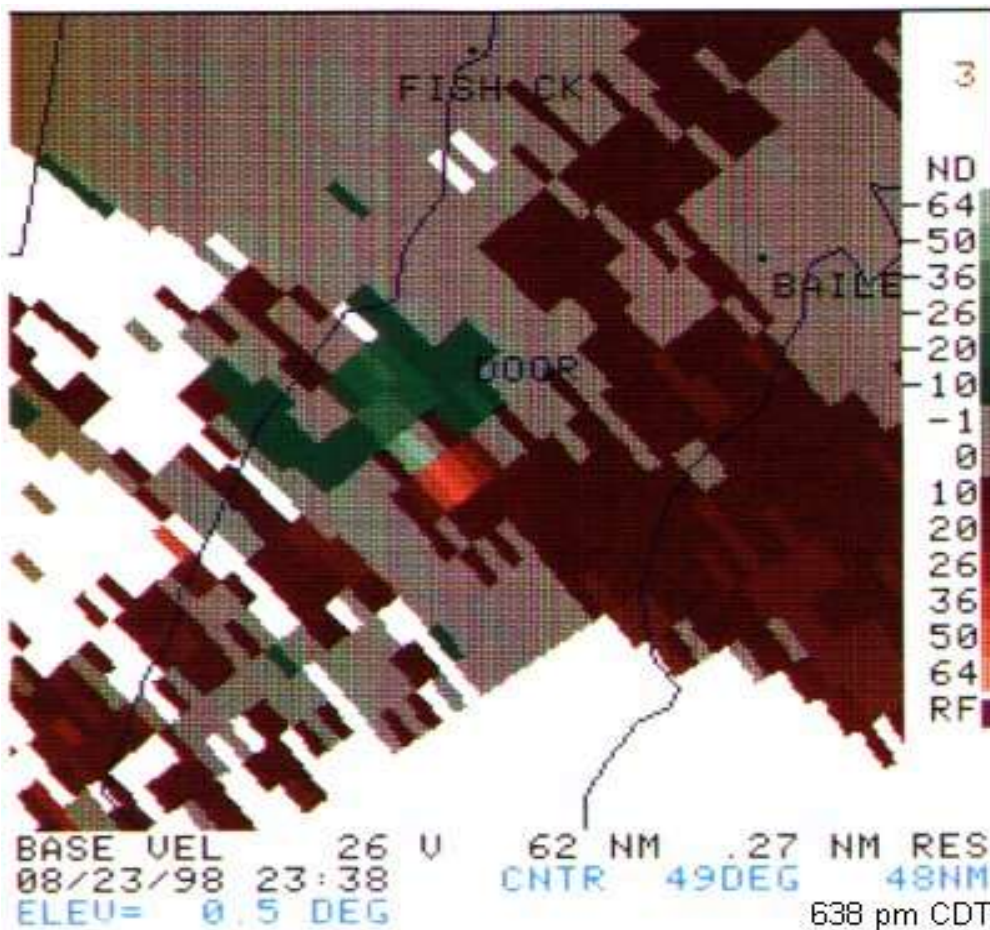
These pictures were taken by Gary Gridley, from Egg Harbor. The photo on the left was taken at 5:25 PM CST. The picture on the right was taken around 5:30 PM CST, as the tornado was coming onshore at Murphy Park.

# F/EF3 TORNADO & WATERSPOUT REFERENCE GUIDE

Event 13: August 23, 1998 Continued



This image shows the supercell thunderstorm as viewed by the radar. The image was taken at 5:33 PM CST.



Note: The second image shows the tornado vortex signature 9 minutes later (5:38 PM CST) near the time it was producing F3 damage. At this point, the radar measured 94 knot (108 mph) winds (ground relative) at about 4,100 feet above the ground.



# F/EF3 TORNADO & WATERSPOUT REFERENCE GUIDE

Event 13: August 23, 1998 Continued

## Door County Tornado Damage



Here is a panoramic view looking east on Hwy 42. The damage width (which goes off the picture on both sides) was over ¼ mile wide as it passed over Hwy 42. (Photograph by Jeff Last)



This building (left picture) was on the south side of the tornado as it passed over Hwy 42 (Photograph by Jill Last, NWS Green Bay). There used to be a farmhouse and barn here (right picture).

# F/EF3 TORNADO & WATERSPOUT REFERENCE GUIDE

Event 14: June 7, 2007

## By National Weather Service Green Bay Staff

Fast moving supercell thunderstorms with damaging winds, hail larger than 5 inches in diameter, and tornadoes ripped across central and northeast Wisconsin on June 7, 2007. Five tornadoes touched down in central and northeast Wisconsin.

Map of northeast Wisconsin and tornado tracks. Not denoted on the map is an area of straight-line wind damage in the Thunder Mountain area of western Marinette County, caused by the same supercell that produced the long-track tornado.



## Menominee-Langlade-Oconto Counties Long-Track Tornado

A long-track EF3 tornado touched down at 3:31 PM CST east of Mattoon in Shawano County and continued northeast to the Oconto-Marinette County line. The tornado was on the ground for at least 40 miles and was over 1/2 mile wide at times. Over 14,000 acres of trees were snapped or flattened, and many dozens of buildings were damaged or destroyed. The twister was rated an EF3 on the Enhanced Fujita scale, with estimated winds of 140 to 160 mph.



Picture on left: Tornado passing south of White Lake in Langlade Co. Picture courtesy: WAOW-TV.

Picture on right: Tornado as seen from HWY T in southwest Oconto Co. Picture courtesy of the Wisconsin Department of Natural Resources.

# F/EF3 TORNADO & WATERSPOUT REFERENCE GUIDE

Event 14: June 7, 2007 Continued

June 7, 2007: Tornadoes and Monster Hail



Path of tornado damage viewed by: Aqua MODIS satellite. Courtesy: ERSC, UW-Madison.

# F/EF3 TORNADO & WATERSPOUT REFERENCE GUIDE

Event 14: June 7, 2007 Continued

## June 7, 2007: Tornadoes and Monster Hail



Picture above: Damage at the Bear Paw Resort.



Picture on the left: More damage at the Bear Paw Resort.



Picture on the right: This is what remained of a double-wide mobile home in the town of Riverview. The owner heard the Tornado Warning and went into the bathtub (circled in large view) and escaped without a scratch!

# F/EF3 TORNADO & WATERSPOUT REFERENCE GUIDE

## Event 14: June 7, 2007 Continued



Looking northeast across Hwy 64 in Oconto Co. The damage path was as much as 3/4 mile wide in this area. Picture courtesy Wisconsin DNR

## Event 15: April 10, 2011

The EF3 tornado developed about 2 miles north of Hamburg at 5:08 CST PM and moved northeast into Lincoln County at 5:10 PM CST. Pine trees were uprooted, and large branches were broken in the path of the storm. One house sustained damage to its siding and several barns were blown down or lost their roofs in Marathon County. The tornado was rated an EF0 in Marathon County. The average width of the tornado in Marathon County was 100 yards. The tornado reached EF3 intensity on the north side of Merrill in Lincoln County at approximately 5:22 PM CST where 22 homes and 7 businesses were destroyed. Several homes lost nearly all exterior and some interior walls. In addition, 22 homes and one business sustained major damage, and 20 homes and four businesses sustained minor damage. A 67 year old male was thrown over 200 feet from his bedroom and suffered broken ribs, a ruptured spleen and a bruised lung. Another person sustained minor injuries. The tornado tore a path over 20 miles long in Lincoln County before dissipating. The maximum width of the tornado was six tenths of a mile (1,050 yards) wide. The average width was about 400 yards.