

# OCONTO COUNTY TORNADO GUIDE (1950-2024)

Updated: 1/1/25

Event	Date			Time		F/EF	Width	Path
#	Month	Day	Year	(CST)	Start / End Location	Rank	(Yards)	(Miles)
1	6	4	1966	19:00	Gillett - 2 NE Oconto Falls	2	50	4.9
2	6	4	1966	19:00	Between Gillett - Suring	2	50	4.7
3	6	26	1969	11:15-11:30	3 W Seymour - 8 W Sobieski	3	100	15.3
4	9	28	1971	16:20-17:20	Hewitt - Middle Inlet	3	300	78.4
5	6	14	1974	16:10	5 NW Gillett	1	30	0.2
6	6	13	1976	20:15	Oconto Falls	1	50	0.2
7	6	16	1979	09:30	Oconto Falls - 2 NE Lena	2	100	15.2
8	5	30	1980	15:20	Oconto	1	50	1.0
9	4	25	1996	17:55-17:57	2 W Pensaukee	0	40	0.1
10	6	7	2007	15:31-16:18	2 ENE Mattoon - 9.5 ENE Lakewood	2	1,320	19.1
11	7	9	2013	18:50-18:54	4.4 NNE Oconto - 5.2 NNE Oconto	0	100	1.6
12	7	6	2015	16:56-17:03	2.2 ENE Gillette - 2.6 SSW Kelly Brook	1	50	2.3
13	6	24	2024	01:25-01:34	2.3 NNW Keshena - 7 E Keshena	1	83	9.0

# **TORNADO REFERENCE GUIDE – OCONTO COUNTY**

## **Event 1: June 4, 1966**

There were two F2 tornadoes reported on this date in Oconto County. The F2 tornado touched down near Gillett and then traveled nearly 5 miles to two miles northeast of Oconto Falls around 7 PM CST. The tornado was 50 yards wide. Another F2 tornado was reported near Suring around 7 PM CST. There were a total of three tornadoes across Oconto County on this night. The tornadoes brought 37 barns and many trees and wires down across the county near Gillett and Suring.

## **Event 2: June 4, 1966**

There were two F2 tornadoes reported on this date in Oconto County. The F2 tornado was reported near Suring around 7 PM CST. The tornado was 50 yards wide and traveled for 2 miles before dissipating. Another F2 tornado touched down near Gillett and then traveled nearly 5 miles to two miles northeast of Oconto Falls in Oconto County around 7 PM CST. There were a total of three tornadoes across Oconto County on this night. The tornadoes brought 37 barns and many trees and wires down across the county near Gillett and Suring.

## **Event 3: June 26, 1969**

A rare morning tornado was reported across northeast Wisconsin. Around 11:15 AM CST, the F3 tornado was noted moving northeast between Black Creek and near Pulaski in Outagamie County. The tornado traveled across far southeast Shawano County before dissipating 8 miles west of Sobieski in Oconto County around 11:30 AM CST. The tornado caused extensive damage to trees and buildings in Black Creek, Seymour, Hofa Park, Elm Lawn and near Pulaski. A seven year old girl was hospitalized from injuries when a barn fell on her. The tornado traveled 18 miles and reached a maximum width of 100 yards.

## **Event 4: September 28, 1971**

The second F3 tornado developed over the town of Hewitt northeast of Wausau in Marathon County around 4 PM CST. The town hall and four barns were destroyed in Hewitt. The tornado continued east northeast into Langlade County, passing about 6 miles south of Antigo and moved across the extreme northwest corner of Menominee County just south of White Lake. The tornado moved into Oconto County near Mountain, and then into Marinette County to Middle Inlet where the tornado dissipated around 5:20 PM CST. The tornado traveled 78 miles and reached a maximum width of 300 yards. The most severe damage occurred at Mountain where damage to buildings and trailers were estimated at \$200,000 dollars. Extensive damage to property and trees was reported in the Boulder Lake area where the lake level was reported to have dropped 5 inches. One person was injured at White Lake and four injuries were noted at Mountain, none seriously.

## **Event 5: June 14, 1974**

On the afternoon of June 14<sup>th</sup>, the F1 tornado touched down 5 miles northwest of Gillett around 4:10 PM CST. The tornado was 30 yards wide and traveled only a quarter of a mile. The tornado downed trees and power lines and threw a chopper wagon thirty yards.

## **Event 6: June 13, 1976**

The F1 tornado developed just west of Oconto Falls around 8:15 PM CST. The tornado was 50 yards wide and traveled less than a quarter of a mile. The damage from the tornado included: a barn was destroyed, a farm house was damaged, trees and power lines were down and a good portion of an orchard was destroyed.

## **Event 7: June 16, 1979**

The F2 tornado developed near Oconto Falls around 9:30 AM CST. The tornado traveled just over 15 miles and reached a maximum width of 100 yards before dissipating 2 miles northeast of Lena. At least 17 frame and mobile homes along with numerous barns were damaged or destroyed. Heavy rains and large hail accompanied the tornado destroying crops along the thunderstorm path.

# TORNADO REFERENCE GUIDE – OCONTO COUNTY

## Event 8: May 30, 1980

The F1 tornado touched down at Highway 22 and Highway J near Oconto around 3:20 PM CST. The tornado was 50 yards wide and traveled one mile. Several buildings and cars were damaged as well as twisting off several trees.

## Event 9: April 25, 1996

A cold-core F0 tornado briefly touched down 2 miles west of Pensaukee around 5:55 PM CST. The tornado was 40 yards wide and traveled a tenth of a mile before dissipating at 5:57 PM CST. Several 6 to 8 inches diameter birch trees were knocked down.



## Event 10: June 7, 2007

### By National Weather Service Green Bay Staff

Fast moving supercell thunderstorms with damaging winds, hail larger than 5 inches in diameter, and tornadoes ripped across central and northeast Wisconsin on June 7, 2007. Five tornadoes touched down in central and northeast Wisconsin.

Map of northeast Wisconsin and tornado tracks. Not denoted on the map is an area of straight-line wind damage in the Thunder Mountain area of western Marinette County, caused by the same supercell that produced the long-track tornado.

## Menominee-Langlade-Oconto Counties Long-Track Tornado

A long-track EF3 tornado touched down at 3:31 PM CST east of Mattoon in Shawano County and continued northeast to the Oconto-Marinette County line. The tornado was on the ground for at least 40 miles and was over 1/2 mile wide at times. Over 14,000 acres of trees were snapped or flattened and many dozens of buildings were damaged or destroyed. The twister was rated an EF3 on the Enhanced Fujita scale with estimated winds of 140 to 160 mph.

## Event 11: July 9, 2013

The EF0 tornado touched down about four and a half miles north northeast of Oconto in Oconto County at 6:40 PM CST. The tornado was observed by an eyewitness just east of Highway 41 near Swede Town Road and County Road A. The tornado moved east for about a mile and half toward the bay before dissipating at 6:54 PM CST. Dozens of trees were snapped and uprooted, and also blew over a recreational vehicle trailer along its path. The maximum width of the tornado was one hundred yards with an average width of seventy-five yards.

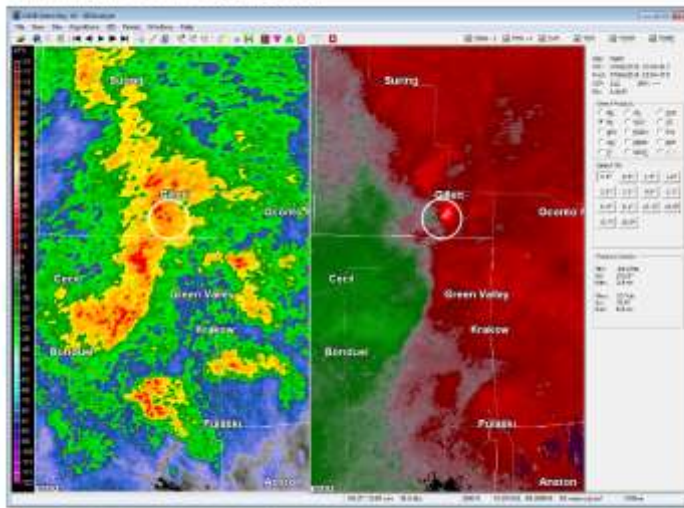
## Event 12: July 6, 2015

The EF1 tornado touched down at 4:56 PM CST 2.2 miles east-northeast of Gillett. The tornado traveled two and a quarter miles and was 50 yards wide before dissipating 2.6 miles south-southwest of Kelly Brook at 5:03 PM CST. The tornado uprooted or snapped at least twenty trees and caused minor damage to a house.

# TORNADO REFERENCE GUIDE – OCONTO COUNTY

## Event 12: July 6, 2015 continued

This new cell north of Embarrass continued to organize and strengthen and eventually produced an EF1 Tornado near Gillett in western Oconto County around 555 pm CDT (see image below).



Radar reflectivity (above left) and velocity (above right) denoting the location of the storm that produced an EF1 tornado near Gillett around 555 pm CDT.

Here are some damage photos from the Gillett tornado:



# **TORNADO REFERENCE GUIDE – OCONTO COUNTY**

## **Event 13: June 25, 2024**

The EF1 tornado developed at 1:25 AM CST near Highway 55 northwest of Keshena. The tornado tracked east-southeast crossing the Legend Lake, resulting in multiple downed power lines, snapped and uprooted trees and flipped several campers at a campground. The tornado entered Oconto County at 1:33 AM CST crossing Berry Lake before lifting at 1:34 AM CST. Total path length was nearly 9 miles with a maximum width of 83 yards. The peak wind was estimated at 98 mph.