

SHAWANO COUNTY TORNADO GUIDE (1950-2024)

Update: 1/1/25

Event #	Date			Time (CST)	Start / End Location	F/EF Rank	Width (Yards)	Path (Miles)
	Month	Day	Year					
1	6	9	1964	14:55	Belle Plaine	1	N/A	N/A
2	8	16	1968	21:20	5 SE Hofa Park	2	100	1
3	6	26	1969	11:15-11:30	Black Creek - Pulaski	3	100	15.3
4	12	1	1970	09:45-10:30	4 NW Iola - Pella	2	200	32.0
5	12	1	1970	10:10-10:20	Medina - Rose Lawn	3	35	30.0
6	4	12	1974	14:15	Wittenberg - Bowler	2	150	10.7
7	5	30	1980	14:30	4 S Shawano	1	50	2.0
8	9	20	1980	23:15	Mattoon	1	35	0.5
9	7	3	1983	19:00	Birnamwood	1	50	0.5
10	4	27	1984	14:55-15:40	Union - Legend Lake	3	440	32.0
11	6	26	1984	19:00	Caroline	1	50	4.0
12	9	14	1991	18:00	2 W Green Valley	0	25	0.1
13	7	8	1994	14:16	3 SE Aniwa	1	75	0.2
14	6	3	2007	18:11	1.6 ESE Shawano	0	10	0.1
15	6	7	2007	15:31-15:32	2 ENE Mattoon - 9.5 ENE Lakewood	3	300	40
16	8	23	2011	17:56-17:57	0.9 - 1.1 SE Briarton	0	50	0.2
17	5	17	2015	14:31-14:40	1.6 WSW Morgan - 3.4 NE Morgan	0	75	4.8
18	7	6	2015	16:03-16:04	1.1 E Pella Airport	0	25	0.1
19	6	4	2016	18:00-18:01	0.9 NE Shawano Lake	0	50	0.1
20	6	14	2017	12:47	2.0 NE Gresham	0	25	0.1
21	6	14	2017	14:40-14:45	1.9 W Nichols - 1.2 WNW Briarton	1	100	4.0
22	6	14	2017	14:45-14:51	1 SE Briarton - 0.9 ESE Landstad	1	75	5.1
23	6	14	2017	14:51-14:59	1.7 SSE Angelica - 1.7 SW Krakow	1	150	5.8
24	6	14	2017	14:53-14:55	2 NW Hofa Park - 0.7 NE Frazier	0	50	3.1
25	10	3	2018	18:08-18:09	1.2 SW - 0.7 SSE Mattoon	0	25	1.0
26	8	11	2021	13:08-13:09	1 SW - 0.8 SSW Angelica	0	41	0.4
27	6	15	2022	16:34-16:36	1.2 ESE Wittenberg - 2.8 NNW Bowler	1	125	9.4
28	6	15	2022	16:46-16:47	4 NNE Bowler - 4.5 NNE Bowler	1	50	0.6
29	6	15	2022	17:09-17:18	0.9 E Leeman - 2.3 NE Leeman	1	80	8.2

TORNADO REFERENCE GUIDE – SHAWANO COUNTY

Event 1: June 9, 1964

The F1 tornado was sighted in Belle Plaine around 2:55 PM CST. The Adams Beach area was hit the hardest according to newspaper reports.

Event 2: August 16, 1968

The F2 tornado first formed about 5 miles southeast of Hofa Park in extreme eastern Shawano County on the Brown - Shawano County line. The tornado moved east about a mile and dissipated four miles south of Pulaski around 9:20 PM CST. The tornado reached a maximum width of 100 yards. A 40 years old dance hall on Highway 29 at the Shawano - Brown County line was destroyed. The building exploded and debris was scattered over nearby fields. The 73 years old owner was hospitalized.

Event 3: June 26, 1969

A rare morning tornado was reported across northeast Wisconsin. Around 11:15 AM CST, the F3 tornado was noted moving northeast between Black Creek and near Pulaski in Outagamie County. The tornado traveled across far southeast Shawano County before dissipating 8 miles west of Sobieski in Oconto County around 11:30 AM CST. The tornado caused extensive damage to trees and buildings in Black Creek, Seymour, Hofa Park, and Elm Lawn and near Pulaski. A seven year old girl was hospitalized from injuries when a barn fell on her. The tornado traveled 18 miles and reached a maximum width of 100 yards.

Event 4: December 1, 1970

Four rare and only December tornadoes were reported on this date across north central and northeast Wisconsin. The F2 tornado touched down with severe damage around 9:45 AM CST on the Heschke farm 4 miles northwest of Iola in Waupaca County. The tornado moved east for 32 miles across Waupaca County into Shawano County before dissipating in Pella around 10:30 AM CST. The maximum width of the tornado was 200 yards. Additional damage occurred in the Marion and Pella areas. A lady and her three small children escaped injury when their mobile home was lifted by the tornado and exploded with debris scattered over the field.

Event 5: December 1, 1970

The F3 tornado developed around 10:15 AM CST near Medina in Outagamie County. The tornado moved northeastward at approximately 50 mph destroying about twenty barns and five homes. The tornado caused additional property damage along a track from Medina to Black Creek and beyond to near County Trunk C in southeastern Shawano County. The tornado was 200 yards wide, traveled 30 miles before dissipating around 10:45 AM CST near Rose Lawn in Shawano County. Damage to farm buildings was estimated at \$500,000 dollars. Damage to a transmission line a mile and a half east of Stephenville was estimated at \$100,000.

Event 6: April 12, 1974

The F2 tornado touched down in Wittenberg around 2:15 PM CST. The tornado traveled nearly 11 miles and reached a maximum width of 150 yards before dissipating near Bowler. Several farms between Wittenberg and Bowler were destroyed. The Wendler farm in the town of Morris and the Watters and Hintz farms in the town of Seneca sustained severe damage. One injury was reported when Mr. Hintz was injured when he was struck by a flying board.

Event 7: May 30, 1980

The F1 tornado touched down at Highway 187 four miles south of Shawano around 2:30 PM CST. The tornado was 50 yards wide and traveled 2 miles before dissipating. A house trailer was destroyed and scattered debris two miles to the northeast.

Event 8: September 20, 1980

The Mattoon area was struck by the F1 tornado around 11:15 PM CST. The tornado was 35 yards wide and traveled a half mile before dissipating. Several buildings were damaged by the tornado.

TORNADO REFERENCE GUIDE – SHAWANO COUNTY

Event 9: July 3, 1983

The F1 tornado touched down in Birnamwood around 7 PM CST. The tornado was 50 yards wide and traveled a half mile.

Event 10: April 27, 1984

The F3 tornado touched down on April 27th in Union township in Waupaca County around 2:55 PM CST. The tornado skipped north northeast to Legend Lake in Menominee County where the tornado dissipated around 3:40 PM CST. The tornado traveled 32 miles and reached a maximum width of 440 yards. Damage occurred to 41 homes and cabins, 5 barns, 19 garages and sheds as well as several hundred acres of forest. The hardest hit areas were around Marion in Waupaca County, the town of Pella in Shawano County, and the South Branch-Legend Lake areas of Menominee County. Overall, there were six tornadoes on this date across north central and northeast Wisconsin. The strongest tornado (F4) occurred across Winnebago and Outagamie Counties around the same time these two tornadoes occurred. Across the state of Wisconsin, there were ten tornadoes reported on this date.

Event 11: June 26, 1984

The F1 tornado touched down on the west side of Caroline around 7 PM CST. The tornado was 50 yards wide and traveled 4 miles before dissipating east of Caroline. On the west side of Caroline, the tornado flattened sheds and knocking over several large trees and gravestones in a cemetery. A church roof was ripped off on the east side of Caroline. The entire town was without power for three hours.

Event 12: September 14, 1991

The F0 tornado touched down briefly 2 miles west of Green Valley around 6:00 PM CST. The tornado was 25 yards wide and only traveled a tenth of a mile. Damage was confined to some trees and a pair of sheds.

Event 13: July 8, 1994

The F1 tornado formed three miles southeast of Aniwa around 2:16 PM CST. The tornado was 75 yards wide. The tornado only traveled two tenths of a mile. The tornado destroyed a garage and toppled trees three miles southeast of Aniwa.

Event 14: June 3, 2007

The brief F0 tornado (landspout) was reported about 2 miles east southeast of Shawano at 6:11 PM CST. The landspout lasted 20 seconds and was observed and photographed. No damage was reported.

TORNADO REFERENCE GUIDE – SHAWANO COUNTY

Event 15: June 7, 2007



By NWS Green Bay Staff

Fast moving supercell thunderstorms with damaging winds, hail larger than 5 inches in diameter, and tornadoes ripped across central and northeast Wisconsin on June 7, 2007. Five tornadoes touched down in central and northeast Wisconsin.

Map of northeast Wisconsin and tornado tracks. Not denoted on the map is an area of straight-line wind damage in the Thunder Mountain area of western Marinette County, caused by the same supercell that produced the long-track tornado.

Shawano - Menominee-Langlade-Oconto Counties Long-Track Tornado

A long-track EF3 tornado touched down at 3:31 PM CST east of Mattoon in Shawano County and continued northeast to the Oconto-Marinette County line. The tornado was on the ground for at least 40 miles and was over 1/2 mile wide at times. Over 14,000 acres of trees were snapped or flattened, and many dozens of buildings were damaged or destroyed. The twister was rated an EF3 on the Enhanced Fujita scale, with estimated winds of 140 to 160 mph.

Event 16: August 23, 2011

The EF0 tornado touched down near Briarton shortly before 6 PM CST along Shady Road in Shawano County just north of the Outagamie County line. Tall grass and a hay field were flattened in a cyclonic pattern. In addition, about a dozen trees had snapped limbed. Peak winds were estimated at 65 to 70 mph. The average path width was 50 yards.

Event 17: May 17, 2015

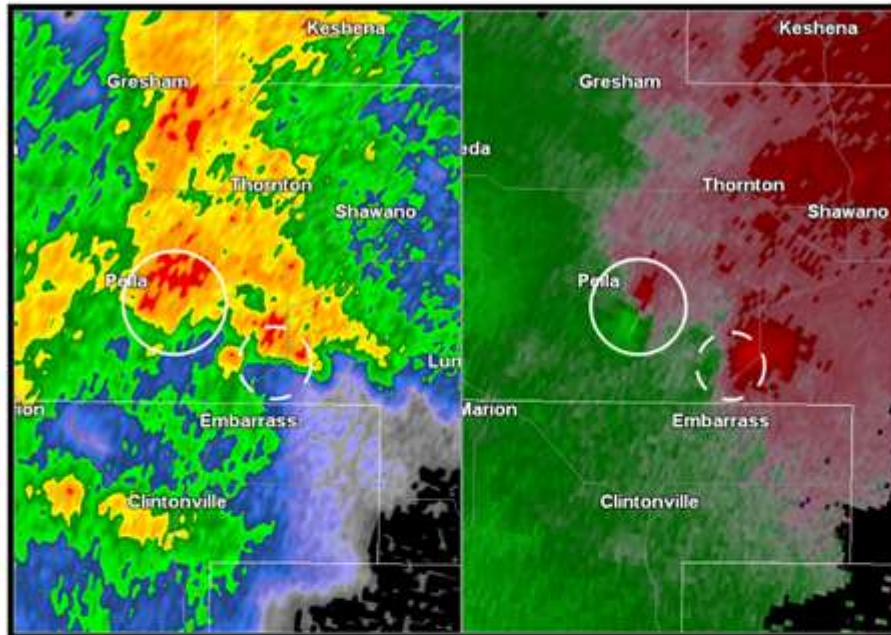
The EF0 tornado touched down at 2:31 PM CST just over a mile and a half west-southwest of Morgan in Shawano County. The tornado produced intermittent damage along a nearly five miles long path, dissipating at 2:40 PM CST just over three miles northeast of Morgan. At least a dozen trees along the path sustained damaged and a barn lost several shingles. The tornado had a maximum width of 75 yards.

TORNADO REFERENCE GUIDE – SHAWANO COUNTY

Event 18: July 6, 2015

The EF0 tornado touched down at 4:03 PM CST just over a mile east of the Pella Airport. The tornado traveled nearly a tenth of a mile and was 25 yards wide before dissipating at 4:04 PM CST. The tornado tore off part of a barn and sent wooden pallets into a nearby field. Radar image and storm damage depicted below.

As this cell continued to move northeast into Shawano County, it produced another very weak tornado (EF0) that briefly touched down near Pella in central Shawano County around 5 pm CDT (denoted by the white circle in the image below). The dashed circle in the image below denotes a new circulation associated with a different cell that was developing to the southeast of the Pella (just north of Embarrass).



Radar reflectivity (above left) and velocity image (above right) associated with brief tornado touchdown near Pella (denoted by solid circle in the image above). Dashed circle denotes a new circulation that eventually produces a tornado near Gillett about 50 minutes later.

Here are some damage photos from the Pella tornado:



TORNADO REFERENCE GUIDE – SHAWANO COUNTY

Event 19: June 4, 2016

The EF0 tornado touched down at 6 PM nearly a mile northeast of Shawano Lake in Shawano County. The tornado traveled a tenth of mile and was 50 yards wide before dissipating at 6:01 PM CST. A very weak waterspout occurred on Loon Lake, about five miles northeast of the city of Shawano. The waterspout was photographed and recorded by law enforcement, remained nearly stationary for about a minute before dissipating. The tornado caused no damage.

Event 20: June 14, 2017

The EF0 tornado touched down in an open field two miles northeast of Gresham near the Shawano/Menominee County line (tornado was photographed) at 12:47 PM CST. The tornado was twenty-five yards wide and traveled a tenth of a mile before dissipating at 12:47 PM CST.

Event 21: June 14, 2017

The EF1 tornado touched down nearly two miles west of Nichols in Outagamie Count (rated EF0 in Outagamie County) around 2:40 PM CST. The tornado removed some shingles and siding off a house. The tornado moved out of Outagamie County about 1.4 miles north of Nichols. The tornado strengthened into an EF1 tornado just south of Navarino. In Shawano County, a detached garage/outbuilding was swept off its foundation. Another garage/outbuilding collapsed with the walls falling outward. A stand of pines across the street 75 yards wide by 125 yards long area that were blown down and snapped in a convergent pattern. The tornado was 100 yards wide and traveled four miles before dissipating 1.2 west-northwest of Briarton around 2:45 PM CST.

Event 22: June 14, 2017

The EF1 tornado touched down a mile southeast of Briarton in Shawano County around 2:45 PM CST. The tornado heavily damaged a wood and sheet-metal pole barn. A mobile home was destroyed as it tumbled off its block foundation. Portions of the home were blown nearly a quarter of a mile into a nearby field and trees. Several trees along the storm's path were uprooted or snapped. The tornado was seventy-five yards wide and traveled 5.1 miles before dissipating about a mile east-southeast of Landstad around 2:51 PM CST.

Event 23: June 14, 2017

The EF1 tornado touched down nearly two miles south-southeast of Angelica in Shawano County around 2:51 PM CST. The tornado ripped off a garage door and one side of the garage collapsed inward. Another nearby garage door collapsed, and one was heavily damaged. Also, a barn's roof collapsed. Several dozen trees were uprooted due to wet soils from recent heavy rain. The tornado was 150 yards wide and traveled nearly six miles before dissipating 1.7 miles southwest of Krakow around 2:59 PM CST.

Event 24: June 14, 2017

The EF0 tornado touched down two miles northwest of Hofa Park in Shawano County around 2:53 PM CST. The tornado heavily damaged an old barn and partially tore the roof off an outbuilding. Another bard had most of its roof blown off. A nearby home had roof damage and its garage door partially collapsed inward. The tornado was 50 yards wide and traveled just over three miles before dissipating 0.7 miles northeast of Frazier around 2:55 PM CST.

Event 25: October 3, 2018

The EF0 tornado touched down around 6:08 PM CST just over a mile southwest of Mattoon in Shawano County. The weak but fast moving tornado caused only minor damage on the south side of the village of Mattoon. The tornado was 25 yards wide and traveled near a mile before dissipating less than a mile south-southeast of Mattoon at 6:09 PM CST.

Event 26: August 11, 2021

The EF0 tornado touched down at 1:08 PM CST one miles southwest of Angelica in Shawano County. The tornado uprooted trees and damaged an outbuilding before moving east and dissipating in a nearby field at 1:09 PM CST. The total path length was estimated at nearly four tenths of a mile and was 41 yards wide. Peak winds were estimated at 68 mph.

TORNADO REFERENCE GUIDE – SHAWANO COUNTY

Event 27: June 15, 2022

The EF1 tornado formed at 4:34 PM CST near Wittenberg in western Shawano County and continued northeast before dissipating at 4:46 PM CST near Bowler. Total path length is estimated at 9.5 miles long, with a maximum width of 125 yards. The peak wind was estimated around 110 mph.

Event 28: June 15, 2022

The EF1 tornado formed at 4:46 PM CST within the Stockbridge-Munsee Community in western Shawano County and continued northeast before dissipating at 4:47 PM CST. The total path length was estimated to be nearly six tenths of a mile long and had a maximum width of 50 yards. The peak wind was estimated to be around 95 mph.

Event 29: June 15, 2022

The EF1 tornado formed at 5:09 PM CST near Leeman in north-central Outagamie County and then continued northeast entering Shawano County at 5:11 PM CST. The tornado dissipated near Navarino in eastern Shawano County at 5:18 PM CST. The tornado path length was estimated at 8.2 miles long with a maximum width of 80 yards. The peak wind speed was estimated at 94 mph.